

BRAN-DEX

WIRELINE SERVICES

CEMENT BOND LOG
GR CCL
VDL

Company		PRB OIL & GAS, INC.	
Well		ENNINGA 943-21-14	
Field		UNNAMED	
County	PHILLIPS	State	COLORADO
Location:		API #	05-095-08127
		SW SW	
		760' FSL 3 600' FWL	
SEC 21 T1MP 9N RGE 43W			
Permanent Datum	GROUND LEVEL	Elevation	3666
Log Measured From	KELLY BUSHING	K.B. 3672	
Drilling Measured From	KELLY BUSHING	D.F. 3671	
		G.L. 3666	
Date	JULY 17, 2007		
Run Number	1		
Depth Diller	2895		
Depth Logger	2735		
Bottom Logger Interval	1250		
Open Hole Size	6.25		
Type Fluid	WATER		
Density / Viscosity	--		
Max. Recorded Temp.	--		
Estimated Cement Top	1950		
Time Well Ready	ROA		
Time Logger on Bottom	--		
Equipment Number	443		
Witnessed By	RAY MCCONNELL		
Run Number	Bit	From	To
	Size	Weight	From
	To		To
Casing Record	Size	Wt/lb	Top
Prod. String			Bottom
Production String			
Liner			

All interpretations are opinions based on inferences from electrical or other measurements and we cannot and do not guarantee the accuracy or correctness of any interpretation, and we shall not, except in the case of gross or willful negligence on our part, be liable or responsible for any loss, costs, damages, or expenses incurred or sustained by anyone resulting from any interpretation made by any of our officers, agents or employees. These interpretations are also subject to our general terms and conditions set out in our current Price Schedule.

Comments

THANK YOU FOR CHOOSING JW WIRELINE
DEPTH REFERENCE TO SLB OPEN HOLE DATED 27-JUNE-2006

Sensor	Offset (ft)	Schematic	Description	Len (ft)	OD (in)	Wt (lb)
CCL	13.25		CCL-GR_1_3/8 (001)	1.00	1.38	11.00
GR	11.49		GR-s_t001 (t001)	2.52	1.69	30.00
WVF5	7.34					
WVF3	6.34		CBL-3_5 (001)	7.23	2.44	127.00
			CENT-B (2)	3.00	1.69	10.00

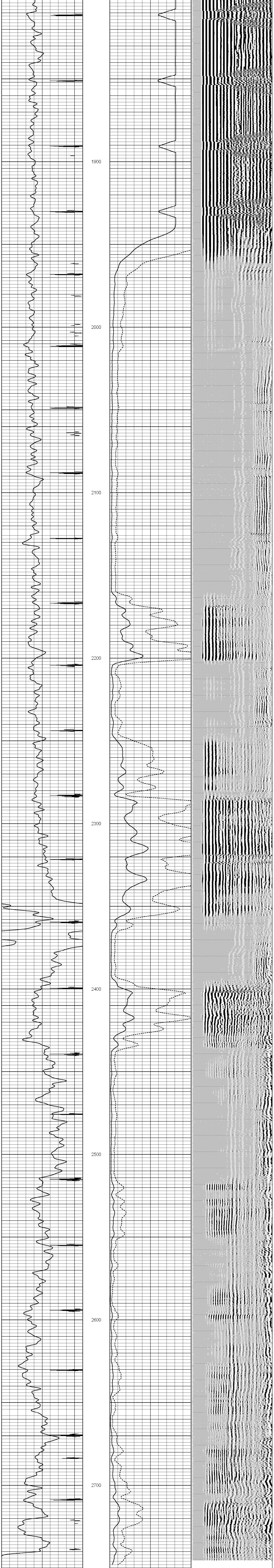
Dataset: enninga 943-21-14.db: field/well/run1/pass2
Total Length: 13.75 ft
Total Weight: 178.00 lb
O.D. 2.44 in

Database File: enninga 943-21-14.db
Dataset Pathname: pass2
Presentation Format: cbxl
Dataset Creation: Mon Jul 16 21:41:49 2007 by Log Std Casedhole 06120
Charted by: Depth in Feet scaled 1:240

0 Gamma Ray (GAPI) 200
9 CCL -1

0 Amplitude (mV) 100 200
0 Amplified Amplitude (mV) 30

Variable Density 1200



0 Gamma Ray (GAPI) 200
9 CCL -1

0 Amplitude (mV) 100 200
0 Amplified Amplitude (mV) 30

Variable Density 1200