

The Road to Excellence Starts with Safety

Sold To #: 338668	Ship To #: 2869906	Quote #:	Sales Order #: 8368648
Customer: CHEVRON - MID-CONTINENT EBIZ	Customer Rep:		
Well Name: FV LARSON	Well #: B 26 Y	API/UWI #:	
Field:	City (SAP): HOUSTON	County/Parish: Harris	State: Texas
Contractor: WORKOVER	Rig/Platform Name/Num: Workover		
Job Purpose: Plug to Abandon Service			
Well Type: Development Well	Job Type: Plug to Abandon Service		
Sales Person: SCHROEDER, BRYCE	Srv Supervisor: MCKEE, RALPH	MBU ID Emp #: 259268	

Job Personnel

HES Emp Name	Exp Hrs	Emp #	HES Emp Name	Exp Hrs	Emp #	HES Emp Name	Exp Hrs	Emp #
ARCHULETA, JACOB Joshua	12.5	491140	CARPENTER, LANCE S	4	461737	MCKEE, RALPH R	8.5	259268
SMITH, KC Hyrum	12.5	462378						

Equipment

HES Unit #	Distance-1 way	HES Unit #	Distance-1 way	HES Unit #	Distance-1 way	HES Unit #	Distance-1 way
10574660C	45 mile	10616259	45 mile	11071474	45 mile	11127544	45 mile
11259879	45 mile						

Job Hours

Date	On Location Hours	Operating Hours	Date	On Location Hours	Operating Hours	Date	On Location Hours	Operating Hours

TOTAL	Total is the sum of each column separately							
-------	--	--	--	--	--	--	--	--

Job

Formation Name	Formation Depth (MD)	Top	Bottom	Form Type	Job depth MD	Job Depth TVD	Water Depth	Perforation Depth (MD)	From	To
				BHST	5908. ft	5908. ft				
						3. ft				

Job Times

Called Out	Date	Time	Time Zone
On Location	02 - Aug - 2011	07:00	MST
Job Started	02 - Aug - 2011	11:00	MST
Job Completed	02 - Aug - 2011	14:36	MST
Job Completed	04 - Aug - 2011	11:30	MST
Departed Loc	04 - Aug - 2011	13:00	MST

Well Data

Description	New / Used	Max pressure psig	Size in	ID in	Weight lbm/ft	Thread	Grade	Top MD ft	Bottom MD ft	Top TVD ft	Bottom TVD ft
7" Production	Unknown		7.	6.366	23.				5958.		
2.875 Tubing	Unknown		2.875	2.441	6.5		N-80		5908.		

Sales/Rental/3rd Party (HES)

Description	Qty	Qty uom	Depth	Supplier
SUGAR - GRANULATED	20	LB		

Tools and Accessories

Type	Size	Qty	Make	Depth	Type	Size	Qty	Make	Depth	Type	Size	Qty	Make
Guide Shoe					Packer					Top Plug			
Float Shoe					Bridge Plug					Bottom Plug			
Float Collar					Retainer					SSR plug set			
Insert Float										Plug Container			
Stage Tool										Centralizers			

Miscellaneous Materials

Gelling Agt	Conc	Surfactant	Conc	Acid Type	Qty	Conc	%
Treatment Fld	Conc	Inhibitor	Conc	Sand Type	Size	Qty	

Fluid Data

Stage/Plug #: 1

Fluid #	Stage Type	Fluid Name	Qty	Qty uom	Mixing Density lbm/gal	Yield ft ³ /sk	Mix Fluid Gal/sk	Rate bbl/min	Total Mix Fluid Gal/sk
1	Fresh Water		9.00	bbl	8.33	.0	.0	.0	
2	PlugCem	PLUGCEM (TM) SYSTEM (452969)	190.0	sacks	15.8	1.15	4.97		4.97
	0.2 %	CFR-3, W/O DEFOAMER, 50 LB SK (100003653)							
	0.1 %	HR-5, 50 LB SK (100005050)							
	4.97 Gal	FRESH WATER							
3	Water Displacement			bbl	8.33	.0	.0	.0	
4	G Neat Cement	PLUGCEM (TM) SYSTEM (452969)	65.0	sacks	15.8	1.15	4.99		4.99
	4.989 Gal	FRESH WATER							
Calculated Values		Pressures		Volumes					
Displacement		Shut In: Instant		Lost Returns		Cement Slurry		Pad	
Top Of Cement	SURFACE	5 Min		Cement Returns		Actual Displacement		Treatment	
Frac Gradient		15 Min		Spacers		Load and Breakdown		Total Job	
Rates									
Circulating	2	Mixing	2	Displacement	2	Avg. Job	2		
Cement Left In Pipe	Amount	0 ft	Reason	Shoe Joint					
Frac Ring # 1 @	ID	Frac ring # 2 @	ID	Frac Ring # 3 @	ID	Frac Ring # 4 @	ID		
The Information Stated Herein Is Correct				Customer Representative Signature					

The Road to Excellence Starts with Safety

Sold To #: 338668	Ship To #: 2869906	Quote #:	Sales Order #: 8368648
Customer: CHEVRON - MID-CONTINENT EBIZ	Customer Rep:		
Well Name: FV LARSON	Well #: B 26 Y	API/UWI #:	
Field:	City (SAP): HOUSTON	County/Parish: Harris	State: Texas
Legal Description:			
Lat:		Long:	
Contractor: WORKOVER	Rig/Platform Name/Num: Workover		
Job Purpose: Plug to Abandon Service	Ticket Amount:		
Well Type: Development Well	Job Type: Plug to Abandon Service		
Sales Person: SCHROEDER, BRYCE	Srv Supervisor: MCKEE, RALPH	MBU ID Emp #: 259268	

Activity Description	Date/Time	Cht #	Rate bbl/min	Volume bbl		Pressure psig		Comments
				Stage	Total	Tubing	Casing	
Call Out	08/02/2011 07:00							Crew called out for job.
Pre-Convoy Safety Meeting	08/02/2011 08:45							Met with crew to discuss the hazards of travel, convoy order, and route to destination.
Depart from Service Center or Other Site	08/02/2011 09:00							Entered into Journey Management.
Other	08/02/2011 10:03				31			@31 BBL. AWAY SHUT IN. / STING OUT / RIG PULLS 3 STANNDs
Arrive at Location from Service Center	08/02/2011 10:30							Ended Journey Management.
Other	08/02/2011 11:00							Met with company man to get numbers and verify information.
Other	08/02/2011 11:01							Rig running tubing in hole
Assessment Of Location Safety Meeting	08/02/2011 11:30							Walked around location with crew to identify material locations (water, mud, etc), potential hazards for spotting equipment, and discussed equipment placement.
Other	08/02/2011 11:40							Spot Equipment
Shutdown	08/02/2011 12:03							LEAVE EQUIPMENT FOR 2ND PLUG TOMORROW
Pre-Rig Up Safety Meeting	08/02/2011 13:03							Discuss Safety and hazards.
Rig-Up Equipment	08/02/2011 13:03							Rig iron on the ground.

Activity Description	Date/Time	Cht #	Rate bbl/min	Volume bbl		Pressure psig		Comments
				Stage	Total	Tubing	Casing	
Pre-Job Safety Meeting	08/02/2011 13:03							DISCUSS SAFETY ISSUES JOB CONTINGENCIES AND PUMP SCHEDULE
Pressure Test	08/02/2011 14:33						3300.0	
Pump Water	08/02/2011 14:37							FILL LINES
Establish Rate	08/02/2011 14:43		2		9		-30.0	
Pump Cement	08/02/2011 14:48		2		38.9		10.0	190 SKS PLUGCEM @15.8 #, 1.15 Y, 4.97GPS.
Pump Displacement	08/02/2011 15:08		2	20				@ 20 BBL. AWAY SHUT DOWN AND LET WELL SUCK TO 31 BBL. AWAY
Shutdown	08/02/2011 15:17							SHUTDOWN, STING OUT OF RETAINER
Reverse Circ Well	08/02/2011 15:34							REVERSE CIRCULATE 70 BBLS OF FRESH WATER TO CLEAR TUBING.
Shutdown	08/02/2011 16:15							leave equipment untill tomorrrw for 2nd plug
End Job	08/02/2011 16:15							
Call Out	08/03/2011 08:00							Plug # 2
Pre-Convoy Safety Meeting	08/03/2011 08:30							
Arrive At Loc	08/03/2011 10:15							RIG RUNNING TUBING
Safety Meeting - Pre Job	08/03/2011 13:42							DISCUSS SAFETY ISSUES AND PUMP SCHEDULE
Pump Water	08/03/2011 13:42		2		2		10.0	
Pressure Test	08/03/2011 13:42						3000.0	
Pump Water	08/03/2011 13:42		2		8		10.0	
Pump Cement	08/03/2011 13:42		2		5		10.0	25 SKS. G-NEAT @ 15.8#, 1.15 Y, 4.99 GPS.
Shutdown	08/03/2011 13:42							

Activity Description	Date/Time	Cht #	Rate bbl/min	Volume bbl		Pressure psig		Comments
				Stage	Total	Tubing	Casing	
Pump Displacement - Start	08/03/2011 13:42		2		15		25.0	WATER
Shutdown	08/03/2011 13:42							RIG PULLS TUBING
Reverse Circ Well	08/03/2011 13:42		4		34		450.0	@15 BBL AWAY CEMENT TO PIT
Shutdown	08/03/2011 13:42							
End Job	08/03/2011 13:42							WASH RCM
Other	08/03/2011 13:42							WILL LEAVE EQUIPMENT FOR ADDITIONAL PLUG TOMORROW @ 08:30
Call Out	08/04/2011 05:30							CREW CALLED OUT
Pre-Convoy Safety Meeting	08/04/2011 06:15							CREW HAS JOURNEY MANAGEMENT SAFETY MEETING
Depart from Service Center or Other Site	08/04/2011 06:30							CREW DEPARTS FROM THE YARD HEADED FOR LOCATION
Arrive At Loc	08/04/2011 07:30							CREW ARRIVES AT LOCATION
Comment	08/04/2011 07:45							RIG CREW TAGS PREVIOUS PLUG AND PULLED UP TO 810'
Assessment Of Location Safety Meeting	08/04/2011 08:00							CREW ASSESSES LOCATION
Pre-Job Safety Meeting	08/04/2011 09:00							CREW, RIG CREW AND COMPANY REP HAVE PRE JOB SAFETY MEETING
Prime Pumps	08/04/2011 09:15							PRIME PUMPS
Circulate Well	08/04/2011 09:23		2	6	6	150.0		PUMP FRESH WATER TO ESTABLISH CIRCULATION
Pump Cement	08/04/2011 09:31		2	4	10	75.0		PUMP 20 SKS G NEAT 1.15 YIELD 4.99 GAL
Pump Displacement	08/04/2011 09:34		2	3.5	13.5	50.0		PUMP FRESH WATER
Comment	08/04/2011 09:45							WASH PUMPS AND LINES
Comment	08/04/2011 10:00							RIG CREW PULLS STANDS AND NIPPLES DOWN BOP

Activity Description	Date/Time	Cht #	Rate bbl/ min	Volume bbl		Pressure psig		Comments
				Stage	Total	Tubing	Casing	
Pre-Job Safety Meeting	08/04/2011 11:00							CREW, RIG CREW AND COMPANY REP HAVE PRE JOB SAFETY MEETING
Pump Cement	08/04/2011 11:21		1	2	2	0		MIX 20 SKS G NEAT 1.15 YIELD 4.99 GAL
Shutdown	08/04/2011 11:32							SHUTDOWN
Post-Job Safety Meeting (Pre Rig-Down)	08/04/2011 11:45							CREW HAS PRE RIG DOWN SAFETY MEETING
Rig-Down Equipment	08/04/2011 12:00							CREW BEGINS RIGGING DOWN EQUIPMENT
Rig-Down Completed	08/04/2011 12:30							CREW IS RIGGED DOWN AND READY TO DEPART
Pre-Convoy Safety Meeting	08/04/2011 12:45							CREW HAS JOURNEY MANAGEMENT SAFETY MEETING
Depart Location for Service Center or Other Site	08/04/2011 13:00							CREW DEPARTS FROM LOCATION HEADED FOR THE YARD

Sold To # : 338668

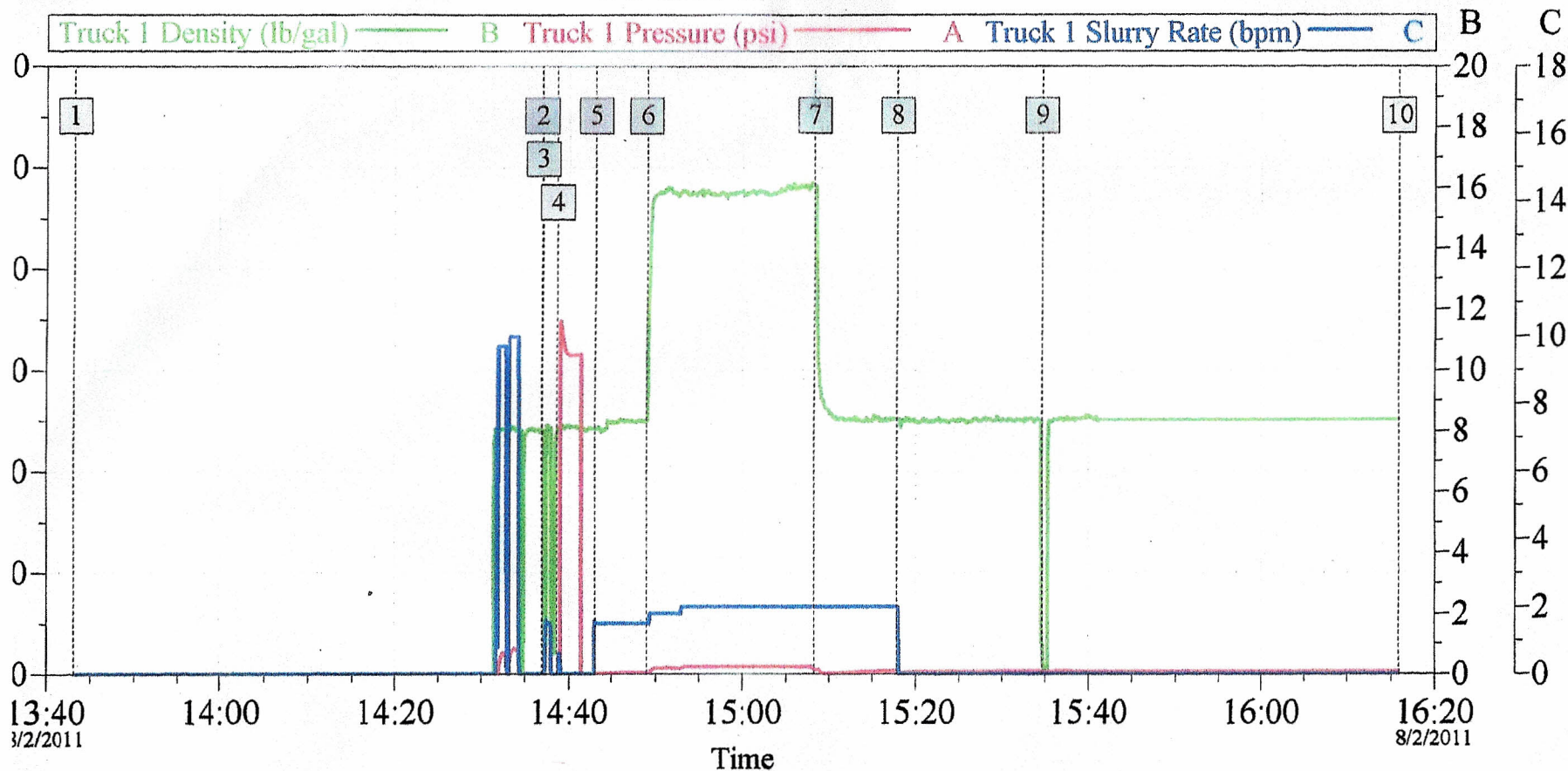
Ship To # : 2869906

Quote # :

Sales Order # :

8368648

CHEVRON PTA
FV LARSON # B 26 Y
8-2-2011 1ST PLUG



Global Event Log

Starting Job	13:43:14	2	Start Job	14:36:52	3	FILL LINES	14:37:01
PRESSURE TEST	14:38:36	5	INJECTION RATE	14:43:06	6	Pump Cement	14:48:54
Pump Displacement	15:08:16	8	SHUT DOWN / LET SUCK	15:17:52	9	Other	15:34:37
Ending Job	16:15:53						

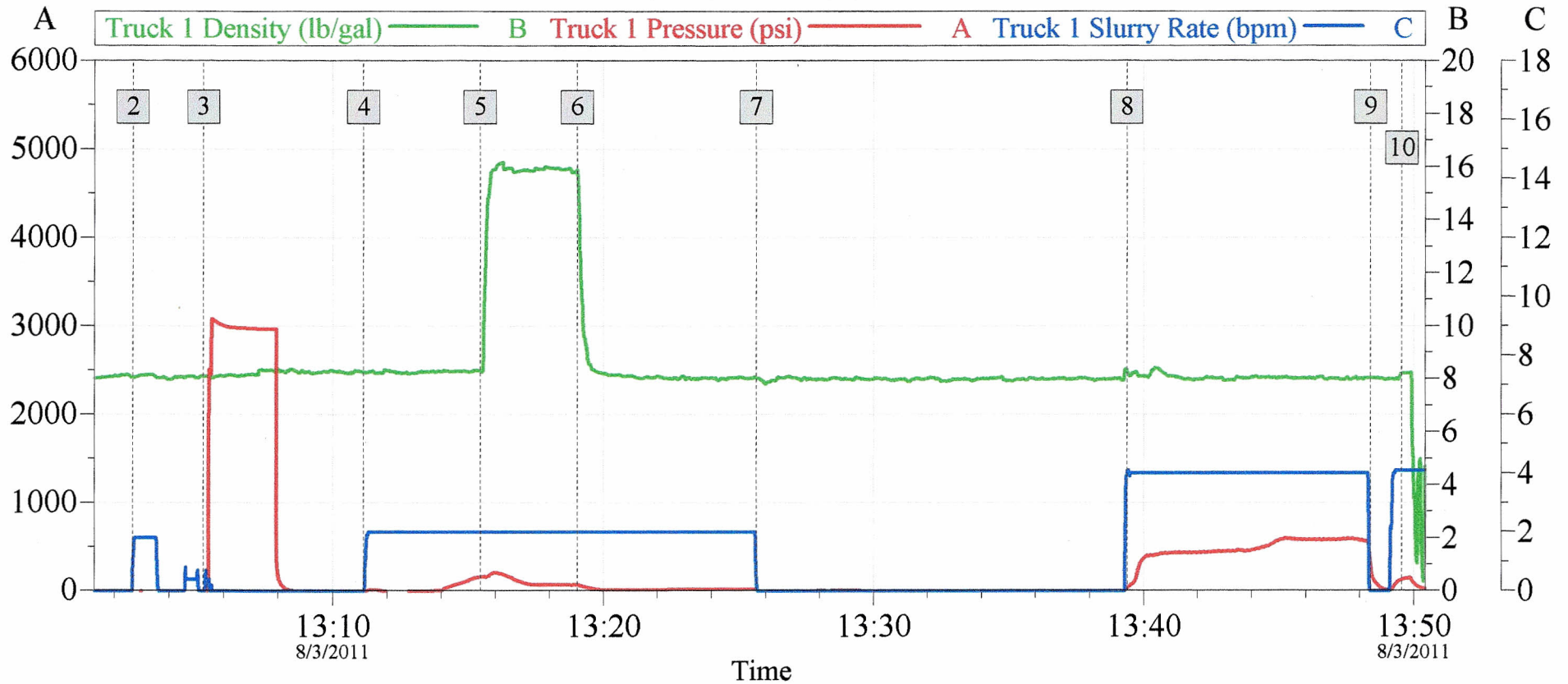
Customer: CHEVRON
 Well Description: FV LARSON B 26 Y

Job Date: 02-Aug-2011
 UWI:

Sales Order #: 8368648

OptiCem v6.4.10
 02-Aug-11 16:21

CHEVRON PTA FV LARSON # B 26 Y 08/03/2011 PLUG #2



Global Event Log

2 FILL LINES	13:02:40	3 Test Lines	13:05:16
4 PUMP WATER SPACER	13:11:09	5 Pump Cement	13:15:27
6 Pump Displacement	13:19:03	7 SHUT DOWN / PULL TUBING	13:25:40
8 Circulate Well	13:39:23	9 SHUT DOWN -WASH UP	13:48:24
10 END JOB	13:49:34		

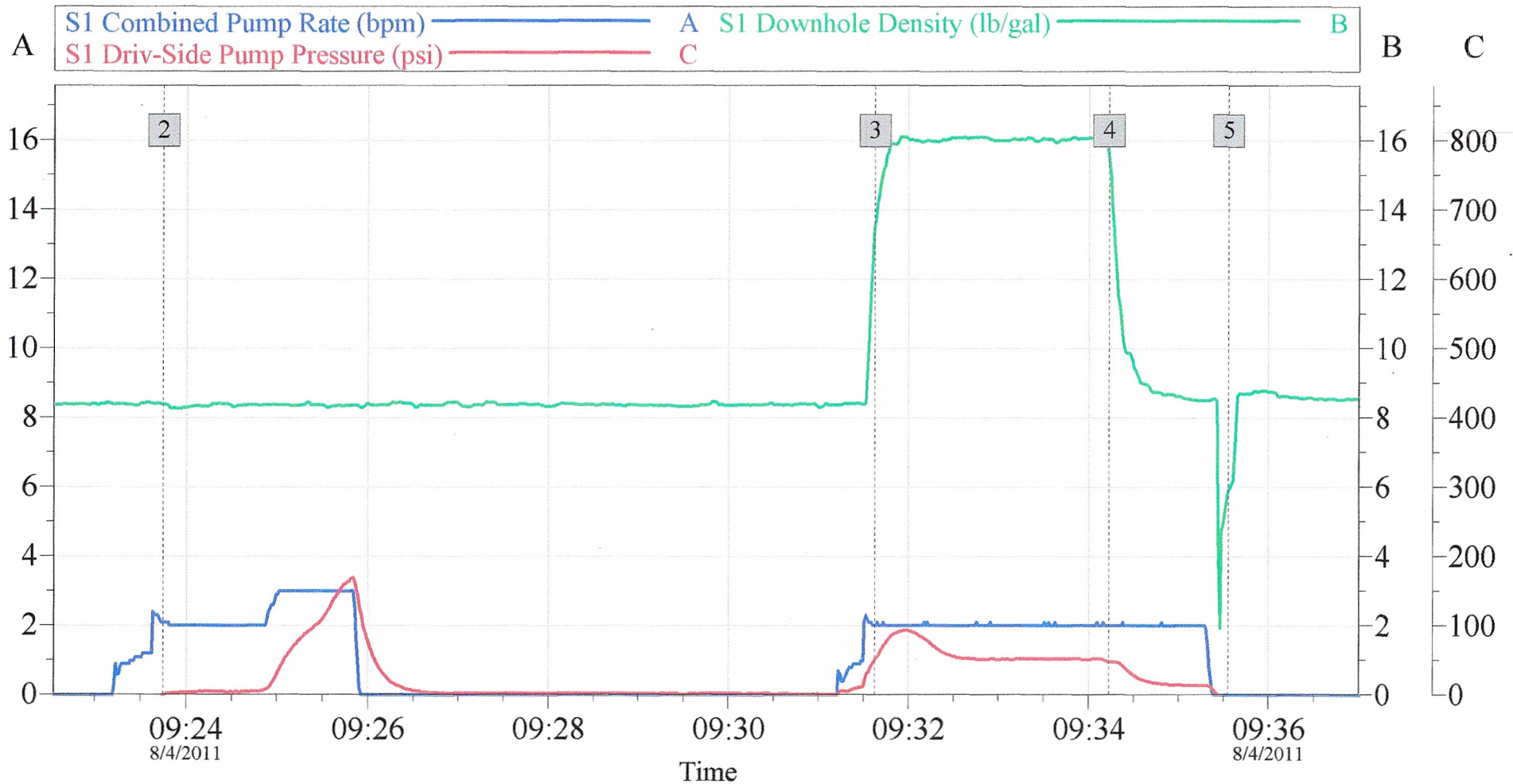
Customer: CHEVRON
Well Description: LARSON B 26 Y

Job Date: 03-Aug-2011
UWI:

Sales Order #: 8368648

OptiCem v6.4.10
03-Aug-11 13:55

CHEVRON PTA LARSON FV B 26 Y PLUG 810' - 710'



Global Event Log							
Intersection			PSI	Intersection			PSI
2	Circulate Well	09:23:45	0.340	3	Pump Cement	09:31:38	51.63
4	Pump Displacement	09:34:13	48.30	5	Shutdown	09:35:33	-10.67

Customer: CHEVRON
Well Description: FV LARSON B 26 Y

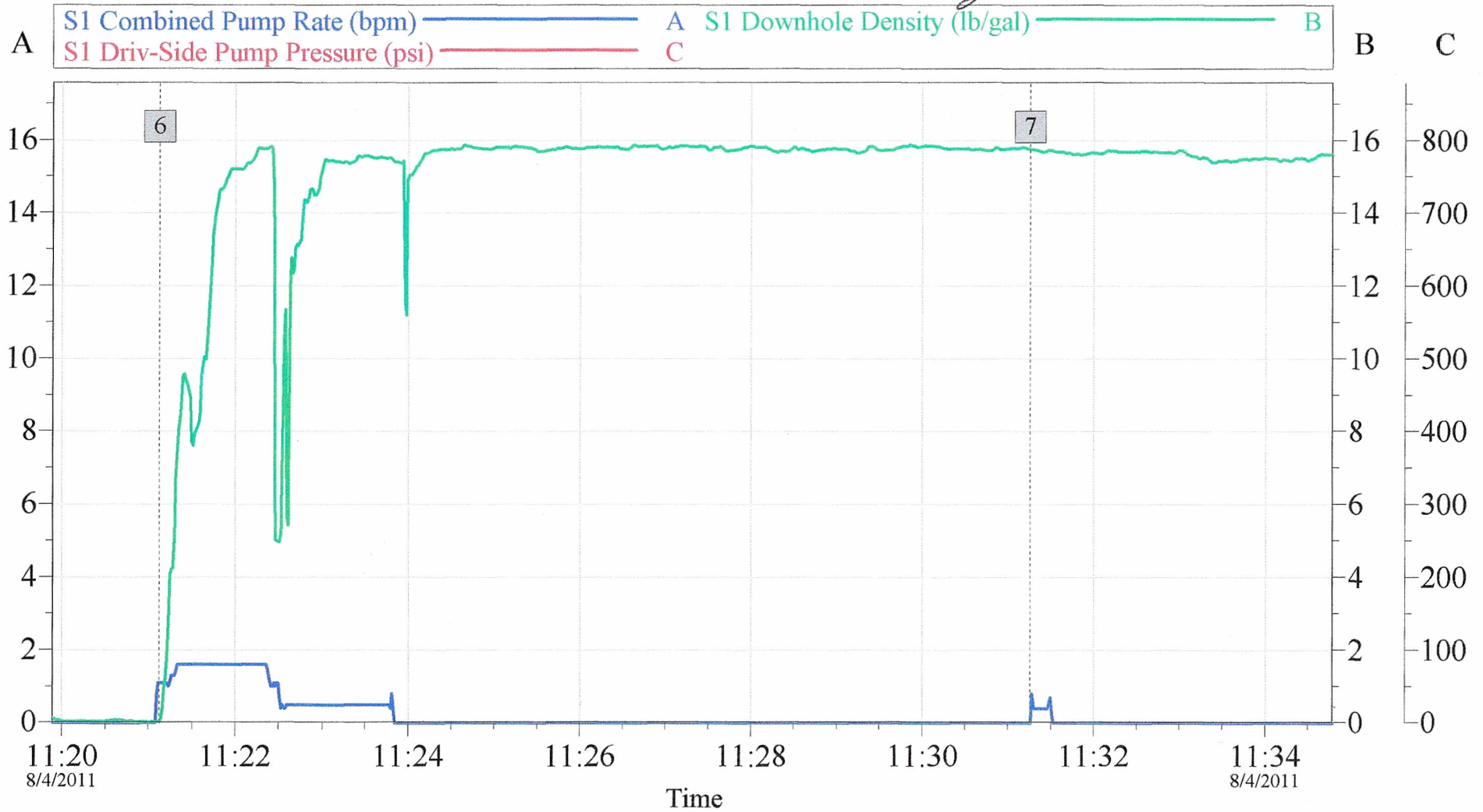
Job Date: 04-Aug-2011
UWI:

Sales Order #: 8368648

OptiCem v6.4.9
04-Aug-11 11:53

CHEVRON PTA LARSON FV B 26 Y

~~PLUG 810' - 710'~~ *Top Plug*



Global Event Log			
Intersection		PSI	Intersection
6	Pump Cement 11:21:07	-32.70	7
	Comment 11:31:15	-39.70	

Customer: CHEVRON
Well Description: FV LARSON B 26 Y

Job Date: 04-Aug-2011
UWI:

Sales Order #: 8368648

OptiCem v6.4.9
04-Aug-11 11:53