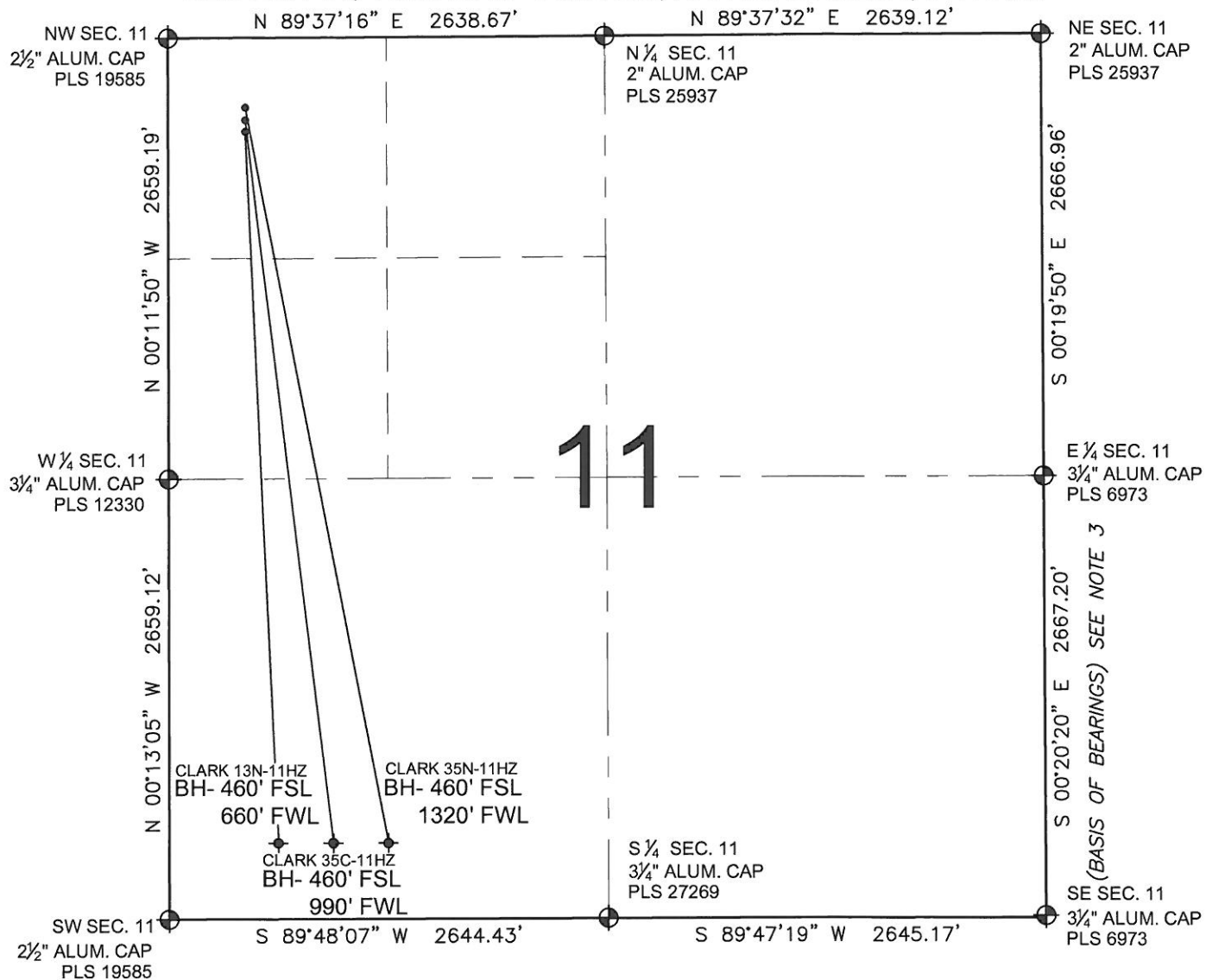


# PAD DRAWING: CLARK 3 PAD

SECTION 11, TOWNSHIP 1 NORTH, RANGE 66 WEST, 6TH P.M.



## LEGEND

- = EXISTING MONUMENT   
 = BOTTOM HOLE   
 BH= BOTTOM HOLE  
 = PROPOSED WELL   
 = EXISTING WELL

## NOTES:

- THIS FIELD SURVEY CONFORMS TO THE MINIMUM STANDARDS SET BY THE C.O.G.C.C., RULE NO. 215
- HORIZONTAL POSITIONS AND ORTHOMETRIC ELEVATIONS SHOWN AT THE WELL HEAD, ARE BASED ON GPS-RTK POSITIONS DERIVED FROM MINIMUM 2-HOUR STATIC OBSERVATIONS CORRECTED BY THE NATIONAL GEODETIC SURVEY ONLINE POSITIONING USER SERVICE, O.P.U.S. DATUM: HORIZONTAL = NAD83/2007, VERTICAL = NAVD88
- THE BASIS OF BEARINGS ARE STATE PLANE COORDINATE SYSTEM GRID BEARINGS SHOWN HEREON BETWEEN THE DESCRIBED THE MONUMENTS SHOWN HEREON.
- GRID DISTANCES ARE SHOWN, AS MEASURED IN THE FIELD, WITH TIES TO WELLS MEASURED PERPENDICULAR TO SECTION LINES.

## NOTES:

- CLARK 35N-11HZ TO BE AT 480' FNL, 470' FWL.  
 BOTTOM HOLE AT 460' FSL & 1320' FWL.  
 CLARK 35C-11HZ TO BE AT 496' FNL, 470' FWL.  
 BOTTOM HOLE AT 460' FSL & 990' FWL.  
 CLARK 13N-11HZ TO BE AT 512' FNL, 470' FWL.  
 BOTTOM HOLE AT 460' FSL & 660' FWL.

PREPARED BY:



KERR-MCGEE OIL & GAS ONSHORE LP

FIELD DATE:  
06-29-11

PAD NAME:  
CLARK 3 PAD

DRAWING DATE:  
07-20-11

SURFACE LOCATION:

BY:  
EFW & SMF

WELD COUNTY, COLORADO  
NW 1/4 NW 1/4, SEC. 11, T1N, R66W

