

Schlumberger

Company: Vecta Oil & Gas Ltd

Well: Torreys 31-4

Field: Wildcat

County: Cheyenne

State: Colorado

Platform Express
Caliper Log
Cement Volume

County: Cheyenne
Field: Wildcat
Location: Sec 4, T14S, R47W
Well: Torreys 31-4
Company: Vecta Oil & Gas Ltd

LOCATION			
Sec 4, T14S, R47W		Elev.: K.B. 4312.00 ft	
SHL:354' FNI X 1623' FEL NWNE		G.L. 4297.00 ft	
Lat/Long: 38.865740/-102.672720		D.F. 4311.00 ft	
Permanent Datum:	Ground Level	Elev.: 4297.00 ft	
Log Measured From:	Kelly Bushing	15.00 ft above Perm. Datum	
Drilling Measured From:	Kelly Bushing		

API Serial No.	Section 4	Township 14S	Range 47W
05-017-07705-0000			

Logging Date 2-Aug-2011

Run Number 1

Depth Driller 5530 ft

Schlumberger Depth 5528 ft

Bottom Log Interval 5522 ft

Top Log Interval 435 ft

Casing Driller Size @ Depth 8.625 in @ 437 ft

Casing Schlumberger 435 ft

Bit Size 7.875 in

Type Fluid In Hole Water Based Mud

Density 9.2 lbm/gal 52 s

Fluid Loss 8 cm3 10

Source Of Sample AIT Sensor

RM @ Measured Temperature 0.783 ohm.m @ 106 degF

RMF @ Measured Temperature 0.587 ohm.m @ 106 degF

RMC @ Measured Temperature 1.174 ohm.m @ 106 degF

Source RMF RMC Calculated

RM @ MRT 0.607 @ 139 0.456 @ 139

Maximum Recorded Temperatures 139 degF

Circulation Stopped 2-Aug-2011 13:00

Logger On Bottom 2-Aug-2011 17:00

Unit Number 3055 Fort Morgan, CO

Recorded By Philip Grant

Witnessed By Matt Goolsby

Run 1

Run 2

Run

Logging Date

Run Number

Depth Driller

Schlumberger Depth

Bottom Log Interval

Top Log Interval

Casing Driller Size @ Depth

Casing Schlumberger

Bit Size

Type Fluid In Hole

Density

Fluid Loss

Source Of Sample

RM @ Measured Temperature

RMF @ Measured Temperature

RMC @ Measured Temperature

Source RMF RMC

RM @ MRT

Maximum Recorded Temperatures

Circulation Stopped

Logger On Bottom

Unit Number

Recorded By

Witnessed By

@

@

@

@

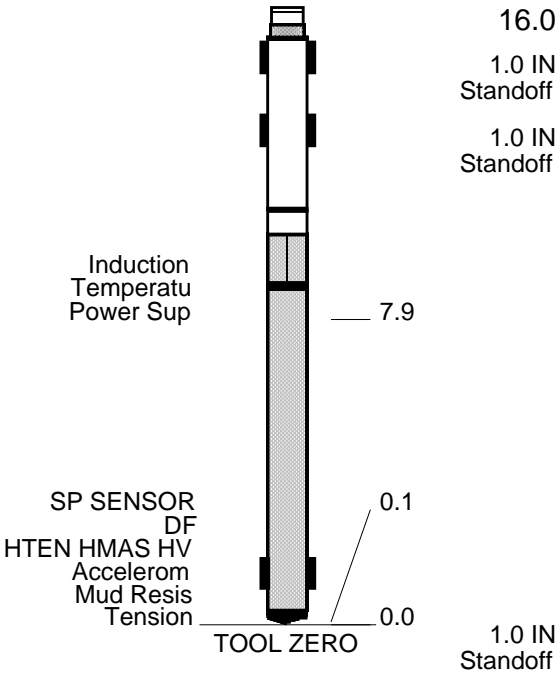
@

@

OTHER SERVICES1	OTHER SERVICES2
OS1: MSIP	OS1:
OS2:	OS2:
OS3:	OS3:
OS4:	OS4:
OS5:	OS5:
REMARKS: RUN NUMBER 1	REMARKS: RUN NUMBER 2
Tool run as per tool sketch.	
This is the first run in hole and primary depth reference.	
Data may be affected by hole rugosity.	
Matrix: Limestone 2.71	

Crew: Jay Musgrave, Derrick Hunter					
Rig: Black Gold 169					
RUN 1 SERVICE ORDER #: BE0K-000164 PROGRAM VERSION: 18C0-147 FLUID LEVEL:			RUN 2 SERVICE ORDER #: PROGRAM VERSION: FLUID LEVEL:		
LOGGED INTERVAL	START	STOP	LOGGED INTERVAL	START	STOP
EQUIPMENT DESCRIPTION					
RUN 1			RUN 2		
SURFACE EQUIPMENT WITM (DTS)-A GSR-U/Y NCT-B CNB-AB NCS-VB					
DOWNHOLE EQUIPMENT					
LEH-QT LEH-QT			43.6		
DTC-H ECH-KC DTCH0-A DTCH1-A	CTEM	39.7	40.6		
	TelStatus ToolStatu HGNS HTEM	37.6			
	HMCA	37.6			
HILTB-FTB HGNSD-B HMCA HGNH NLS-KL NSR-F 5068 HACCZ 328 HCNT HGR HRCC-B HRMS-B HRGD-B GLS-VJ 5094 MCFL Device HILT Nucl. LS HILT Nucl. SS HILT Nucl. BS BOW-SPR NPV-N	HGNS Gamm	36.9	37.6		
	HGNS Neut HGNS Neut	31.1 30.6			
	HGNS sens	28.2			
	HRCC cart	24.2			
	MCFL HILT cali HRDD-LS HRDD-SS HRDD-BS	18.8 18,3 17.9			

AIT-M
AMIS-A 1270
AMRM-A



MAXIMUM STRING DIAMETER 5.88 IN
MEASUREMENTS RELATIVE TO TOOL ZERO
ALL LENGTHS IN FEET

Production String	(in)		(ft)	Well Schematic	(ft)	(in)		Casing String
	OD	ID	MD		MD	OD	ID	
					0.0	8.625	8.097	Casing String
					437.0 437.0	8.625 7.875	8.097	Casing Shoe Borehole Segment

--	--	--	--	--	--	--	--	--	--

All Depths are Drillers

Input DLIS Files

DEFAULT	AIT_TLD_MCFL_CNL_007LUP	FN:6	PRODUCER	02-Aug-2011 16:19	5550.0 FT	411.0 FT
DEFAULT	AIT_TLD_MCFL_CNL_005PUP	FN:4	PRODUCER	02-Aug-2011 16:10	5545.5 FT	4904.0 FT

Integrated Hole/Cement Volume Summary

Hole Volume = 1798.91 ft3
Cement Volume = 958.68 ft3 (assuming 5.50 in casing O.D.)
Computed from 5527.5 ft to 435.0 ft

OP System Version: 18C0-147

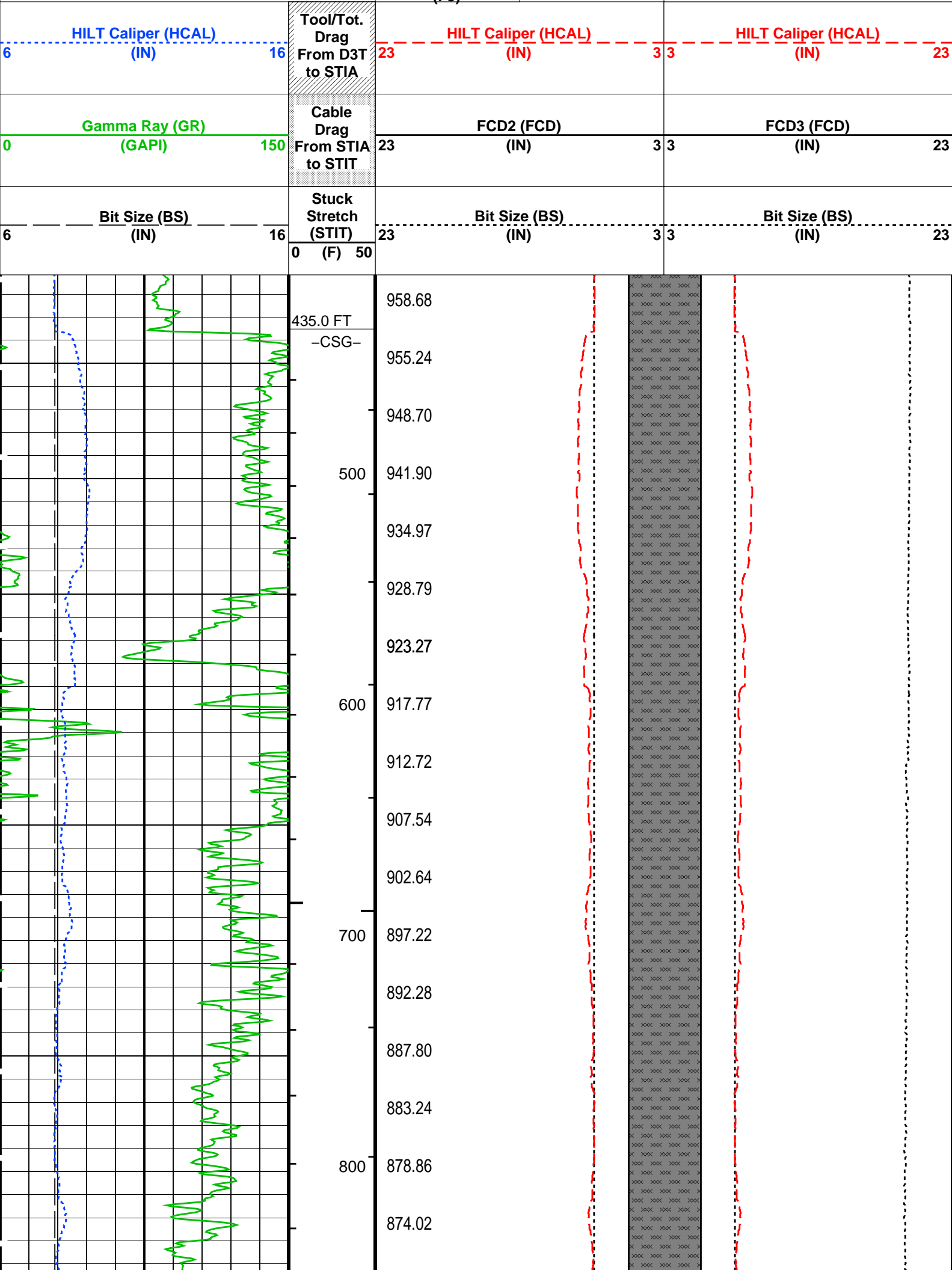
AITM	18C0-147	HILTD	18C0-147
DTCH	18C0-147		

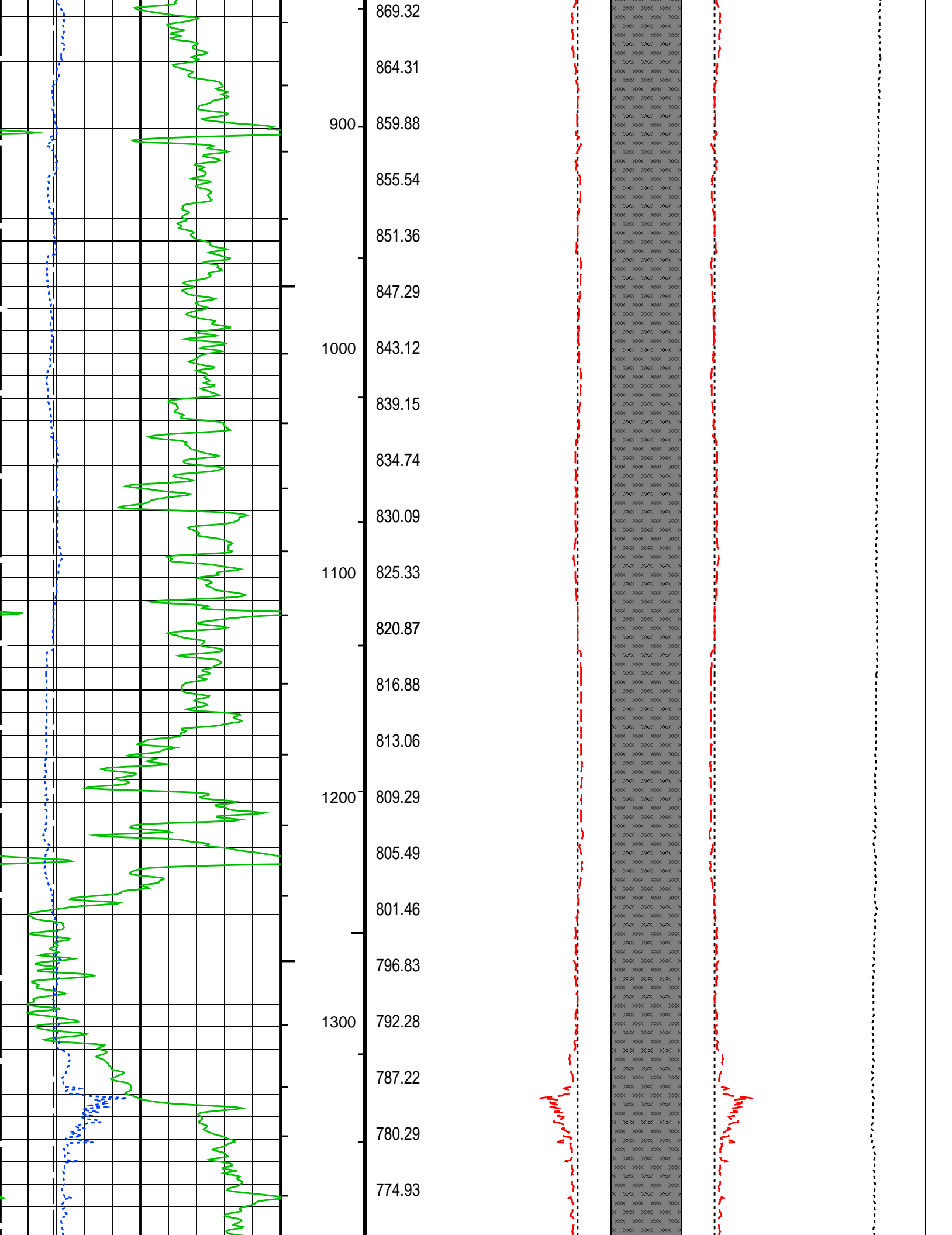
PIP SUMMARY

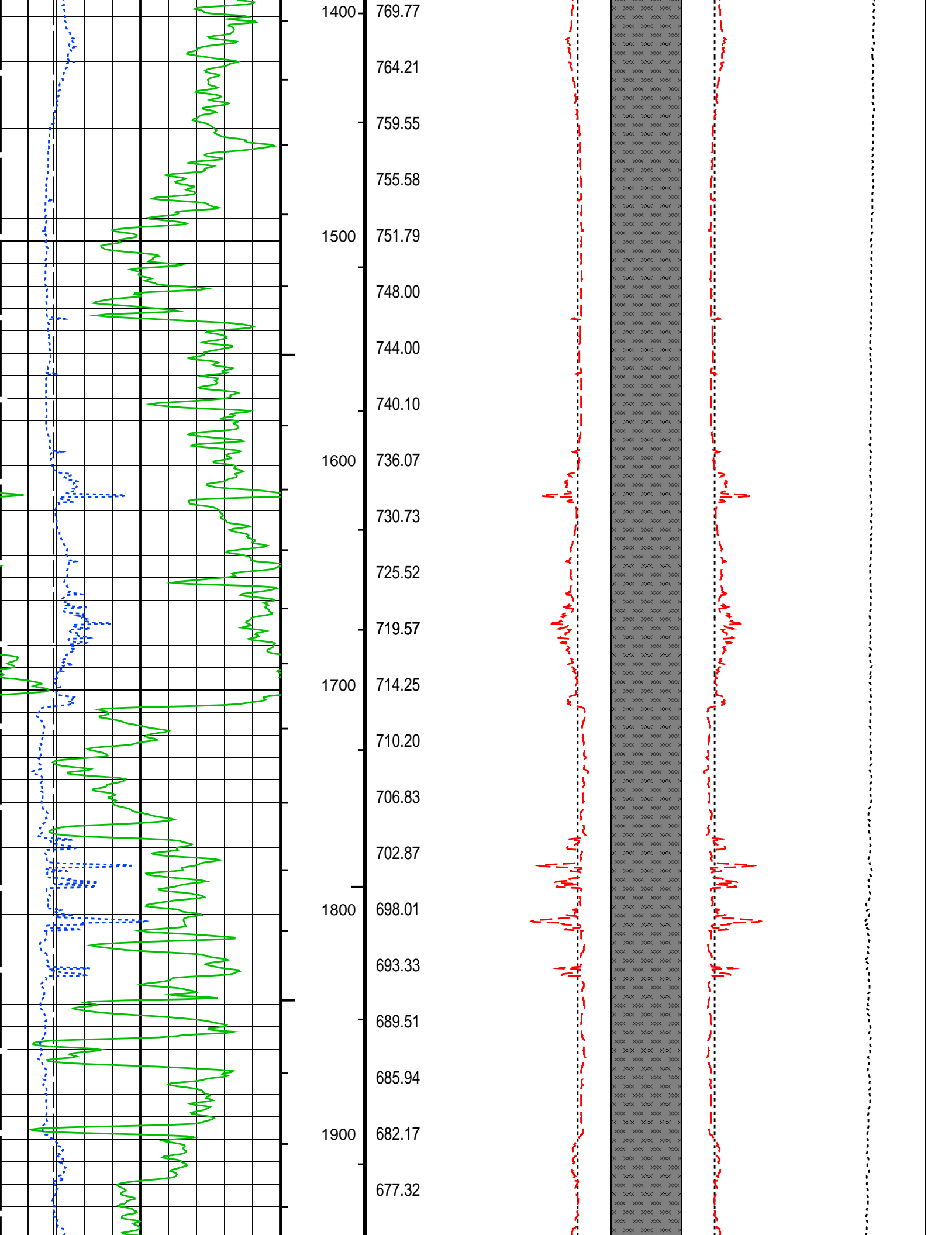
- └ Integrated Hole Volume Minor Pip Every 10 F3
- └ Integrated Hole Volume Major Pip Every 100 F3
 - └ Integrated Cement Volume Minor Pip Every 10 F3
 - └ Integrated Cement Volume Major Pip Every 100 F3

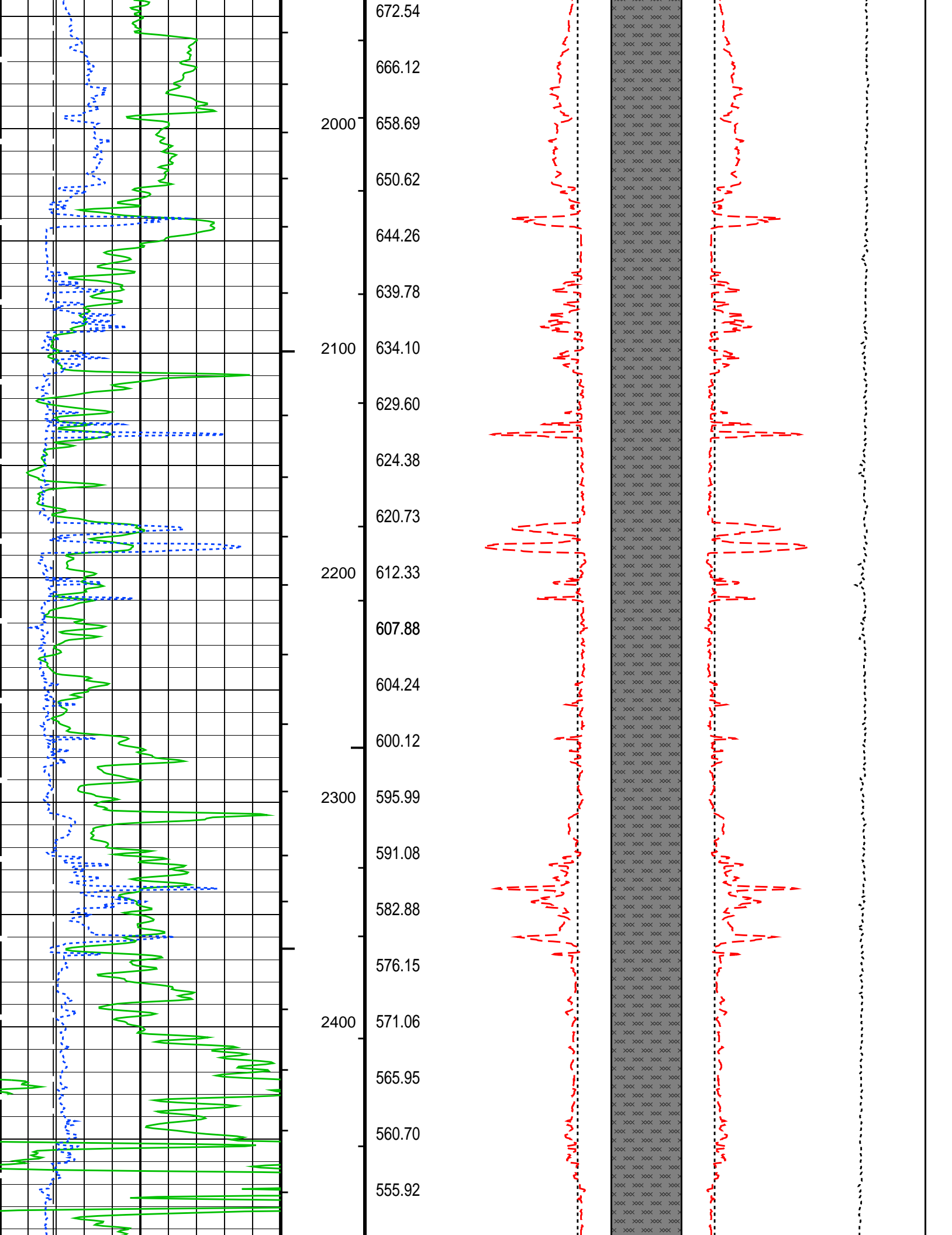
Time Mark Every 60 S

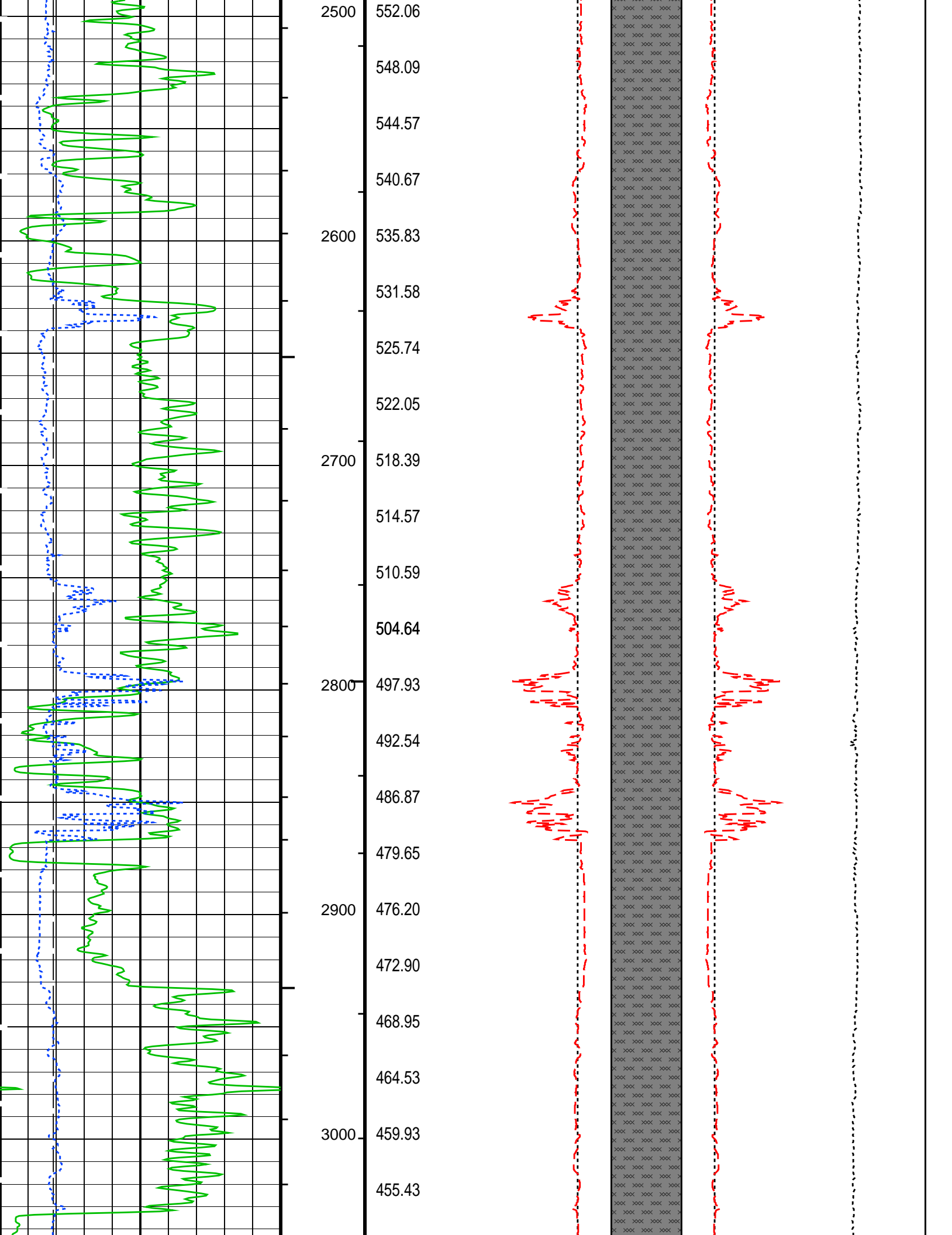
FCD2 – FCD3 From FCD2 to FCD3			
Cement Volume (ICV) (F3)		Tension (TENS) (LBF)	0
	6000		

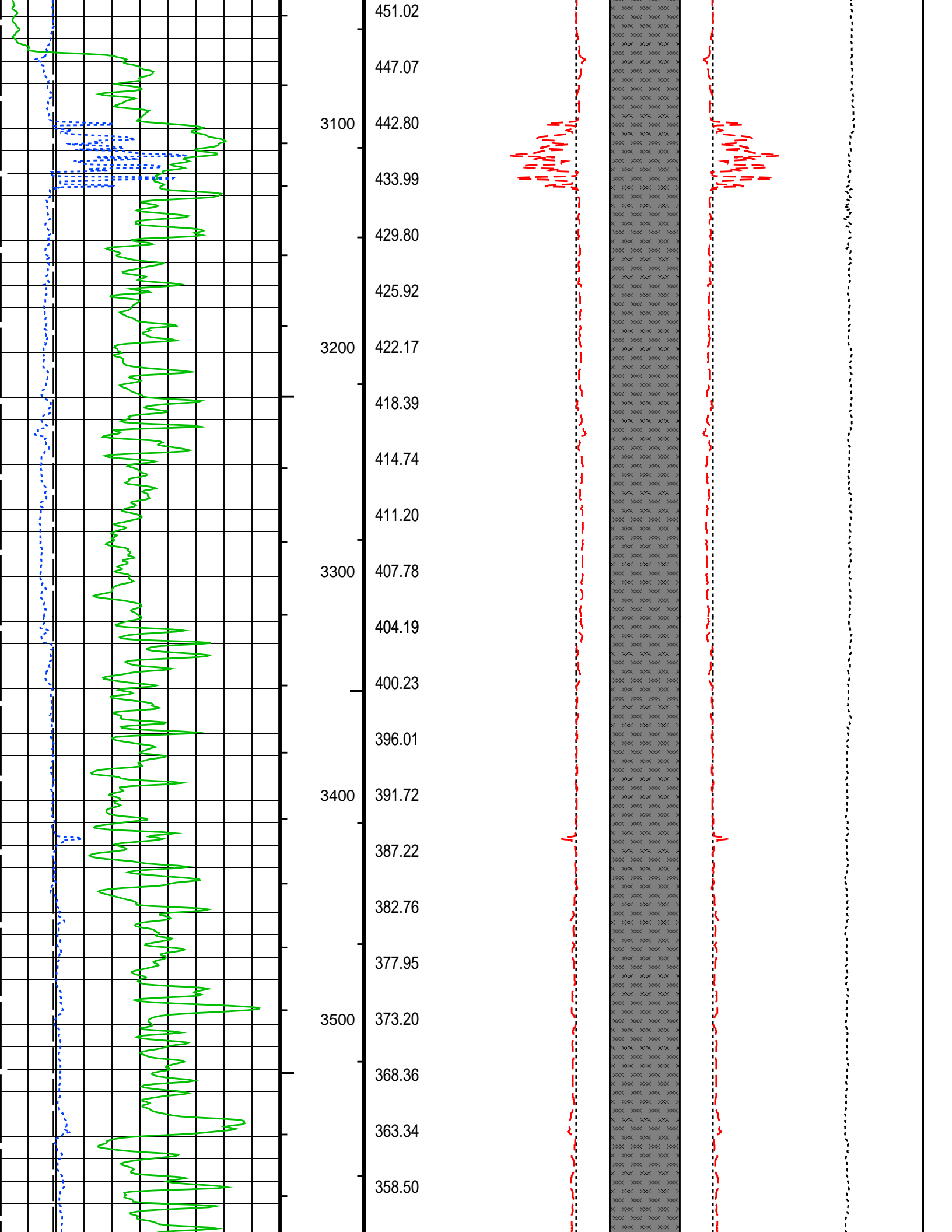


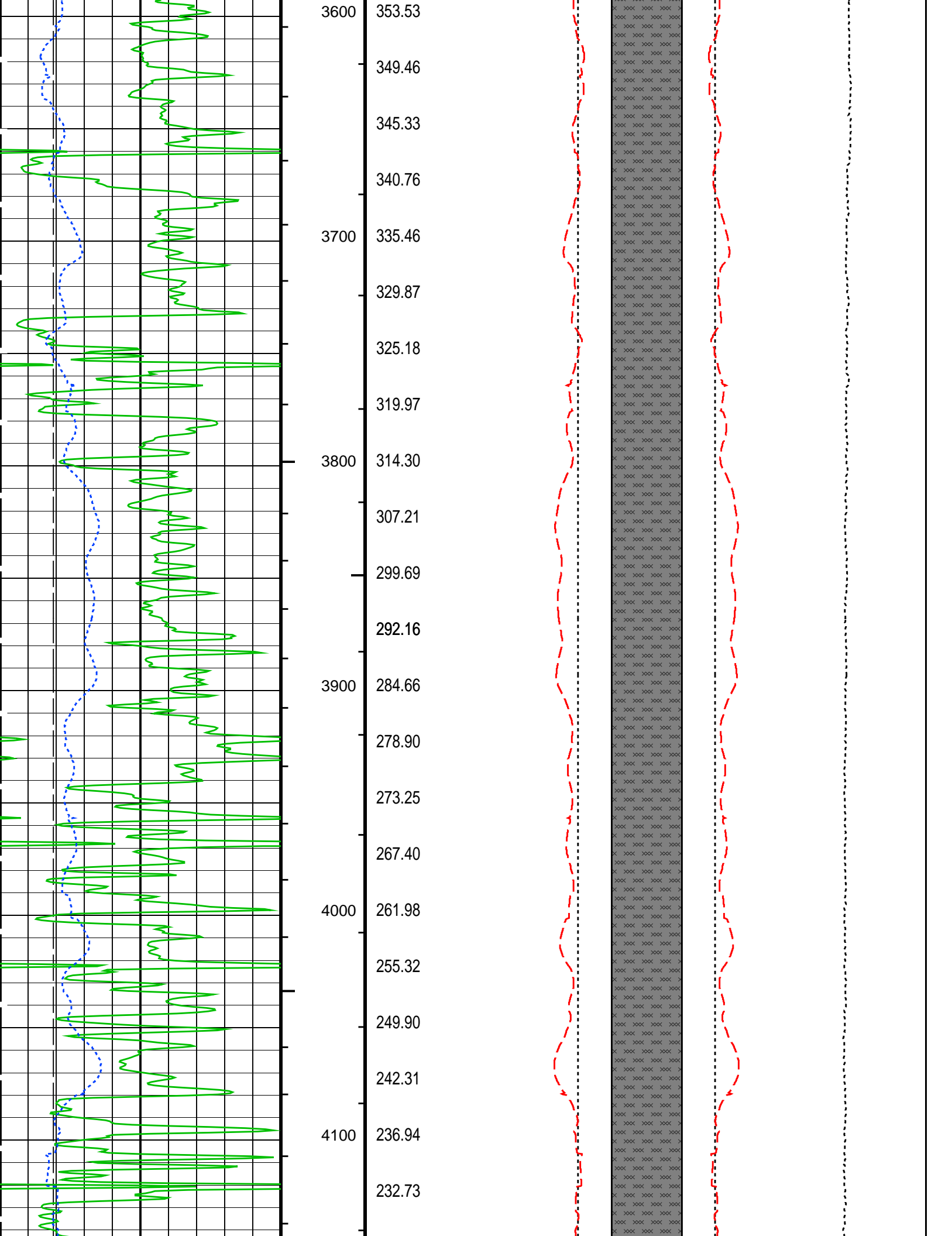


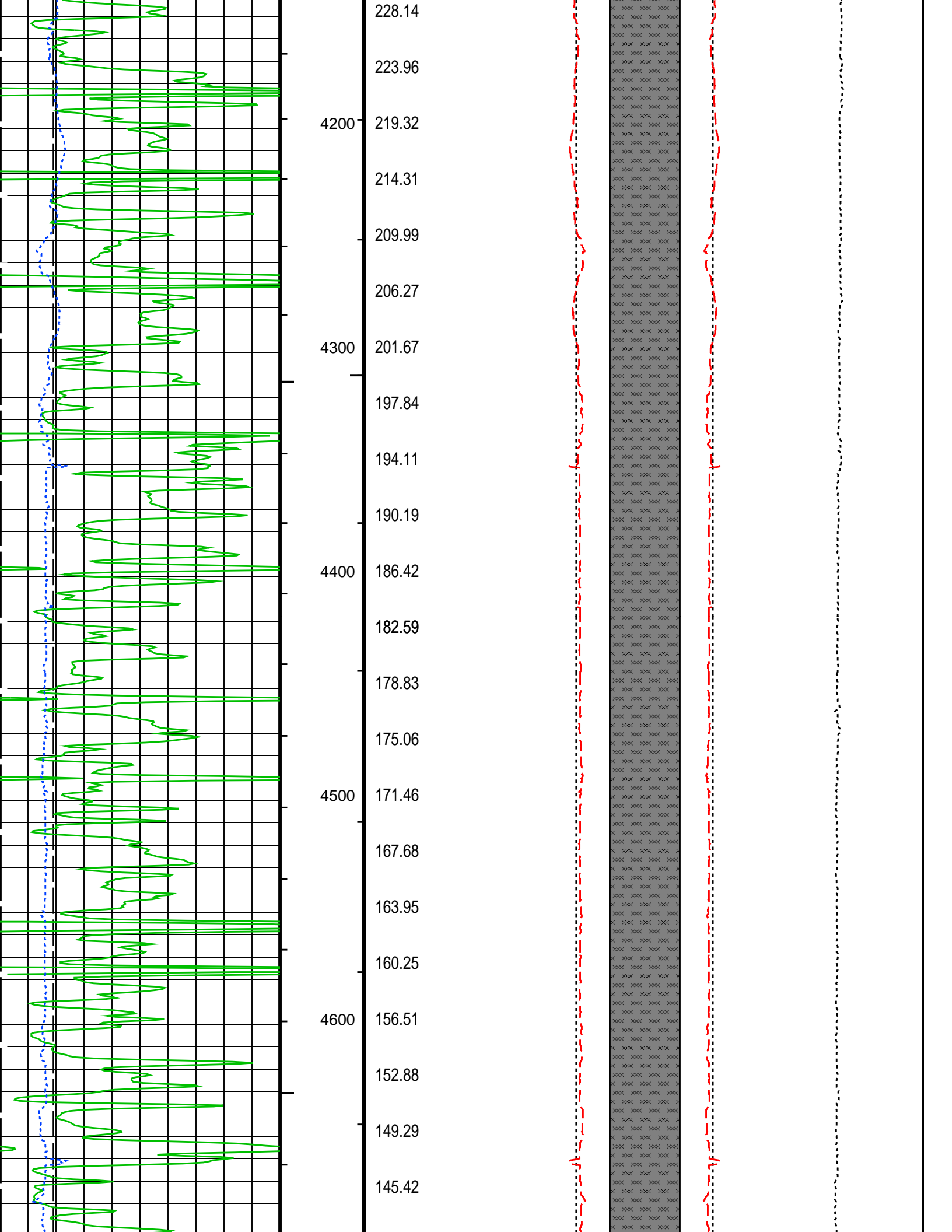


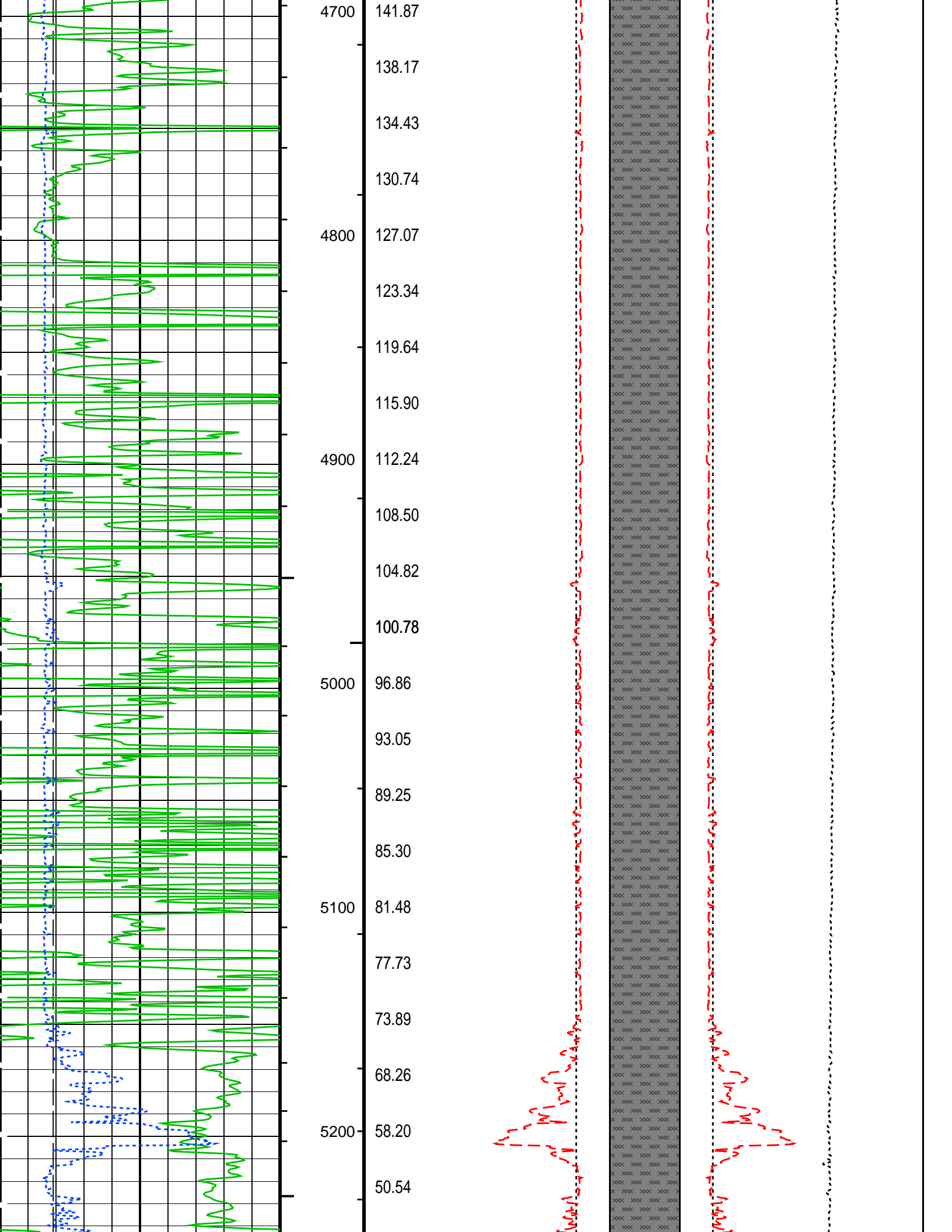


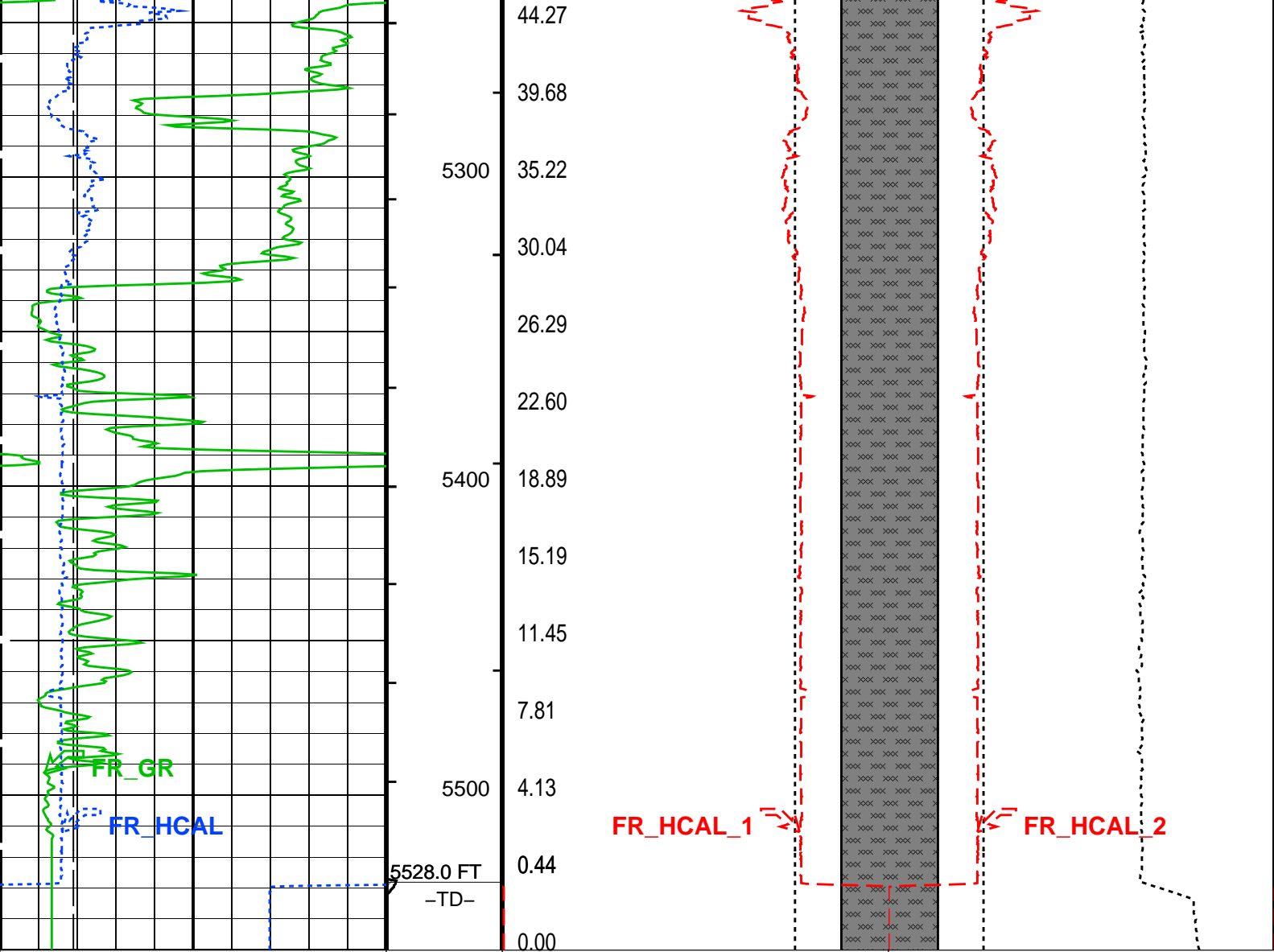












Bit Size (BS) (IN)		Stuck Stretch (STIT) 0 (F) 50	Bit Size (BS) (IN)		Bit Size (BS) (IN)	
6	16		23	3 3	23	
Gamma Ray (GR) (GAPI)		Cable Drag From STIA to STIT	FCD2 (FCD) (IN)		FCD3 (FCD) (IN)	
0	150		23	3 3	23	
HILT Caliper (HCAL) (IN)		Tool/Tot. Drag From D3T to STIA	HILT Caliper (HCAL) (IN)		HILT Caliper (HCAL) (IN)	
6	16		23	3 3	23	
			Cement Volume (ICV) (F3)		Tension (TENS) (LBF)	
				6000	0	
FCD2 – FCD3 From FCD2 to FCD3						

PIP SUMMARY

- └ Integrated Hole Volume Minor Pip Every 10 F3
- └ Integrated Hole Volume Major Pip Every 100 F3
- └ Integrated Cement Volume Minor Pip Every 10 F3
- └ Integrated Cement Volume Major Pip Every 100 F3

Time Mark Every 60 S

Parameters

PLUS Name	Description	Value
-----------	-------------	-------

DLIS Name		Description	Value	
STI: Stuck Tool Indicator				
STKT		STI Stuck Threshold	2.500	ft
TDD		Total Depth – Driller	5530.0	ft
TDL		Total Depth – Logger	5528.0	ft
System and Miscellaneous				
BS		Bit Size	7.875	in
Format: G_DCAL_FORMAT		Vertical Scale: 2" per 100'	Graphics File Created: 02-Aug-2011 18:56	
OP System Version: 18C0-147				
AITM	18C0-147	HILTD	18C0-147	
DTCH	18C0-147			
Input DLIS Files				
DEFAULT	AIT_TLD_MCFL_CNL_007LUP	FN:6	PRODUCER 02-Aug-2011 16:19	5550.0 FT 411.0 FT
DEFAULT	AIT_TLD_MCFL_CNL_005PUP	FN:4	PRODUCER 02-Aug-2011 16:10	5545.5 FT 4904.0 FT

Company: **Vecta Oil & Gas Ltd**

Schlumberger

Well: **Torreys 31-4**

Field: **Wildcat**

County: **Cheyenne**

State: **Colorado**

Platform Express

Caliper Log

Cement Volume