

[illegible]

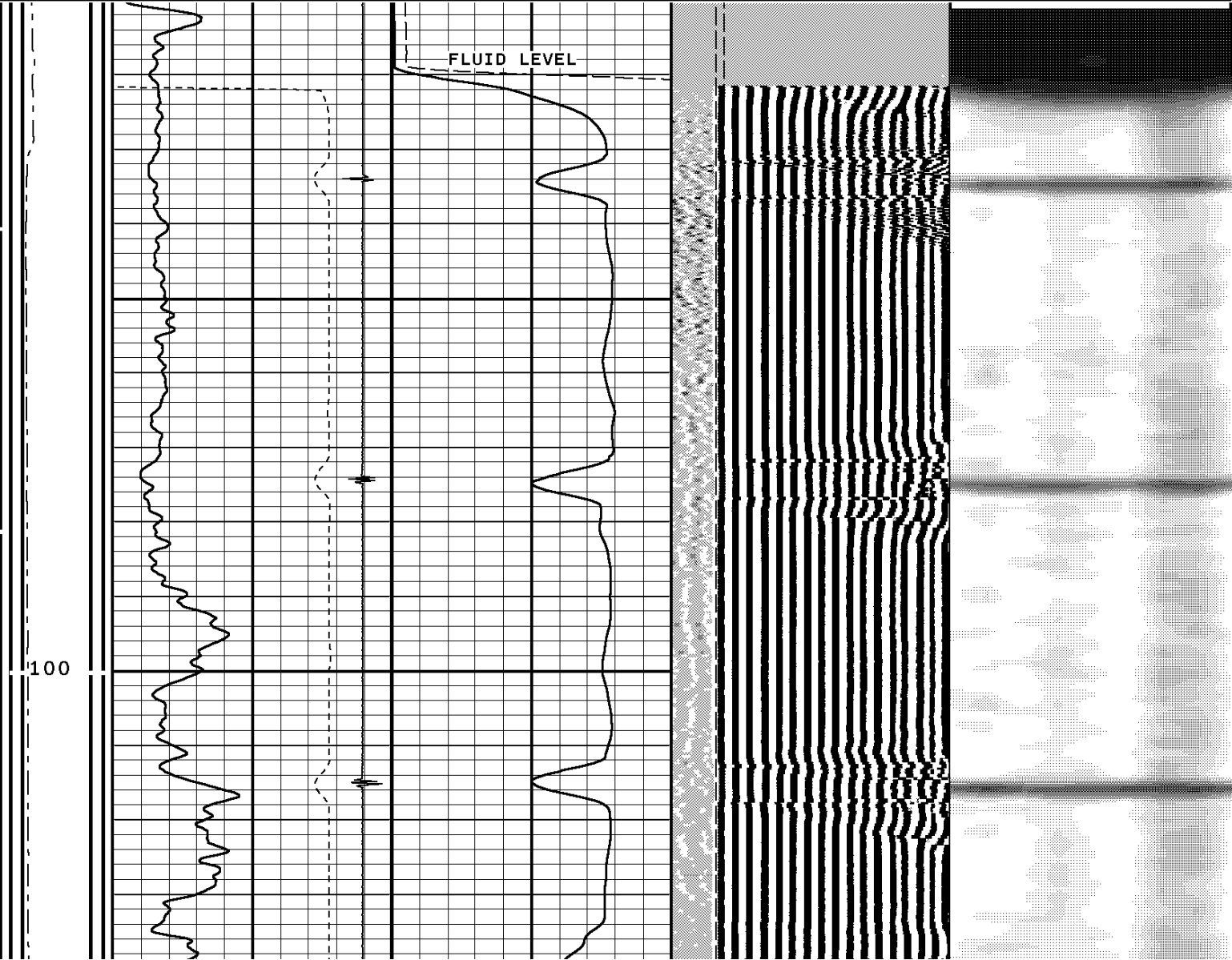
All interpretations of log data are opinions based on inferences from electrical or other measurements. We do not guarantee the accuracy or correctness of any interpretation or recommendation and we shall not be liable or responsible for any loss, cost, damages or expenses incurred or sustained by anyone resulting from any interpretation or recommendation made by any of our employees or agents.

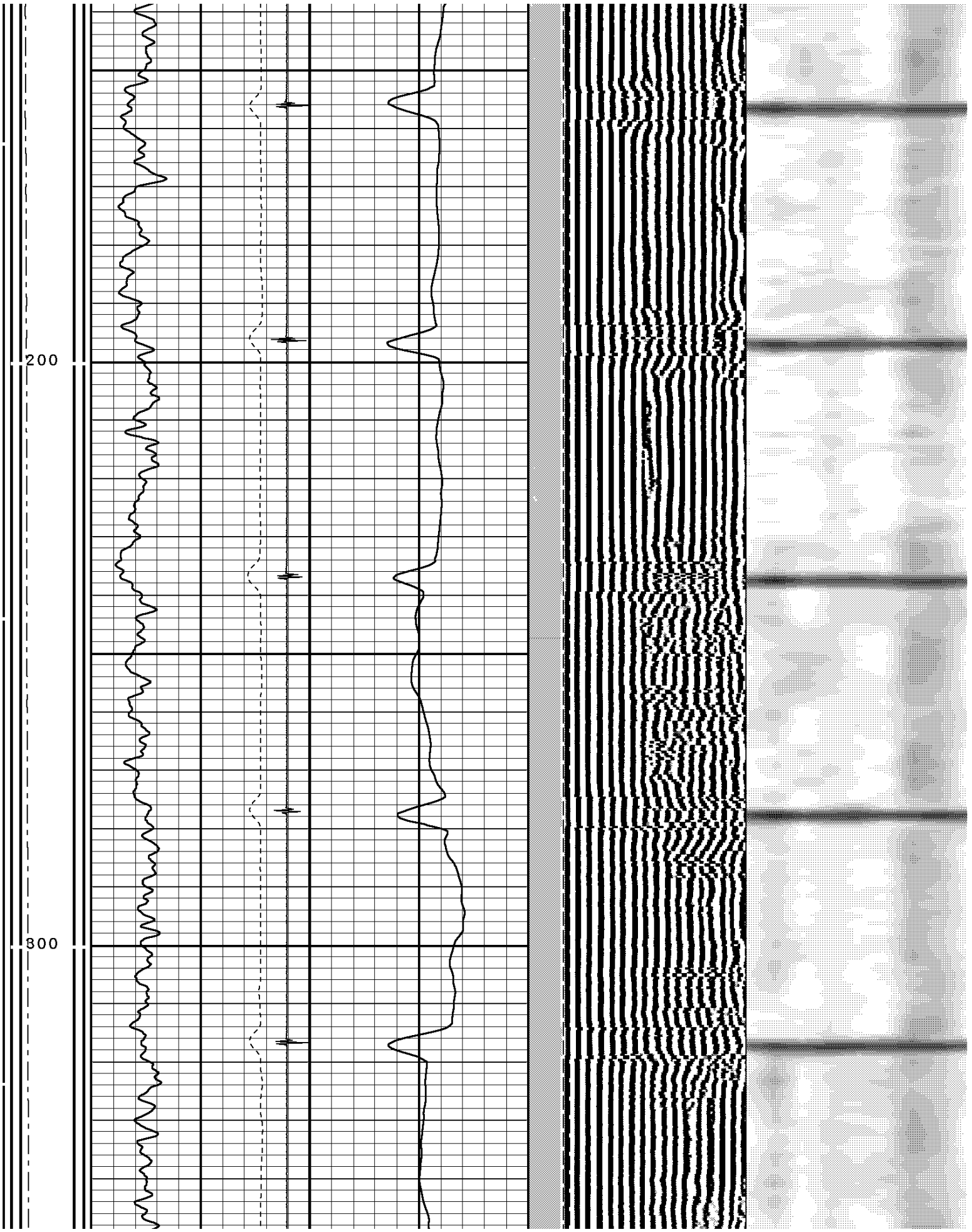
REMARKS		Rig: KEY #10		Service Order # 138955	
LOG DEPTHS CORRECTED -2.5' TO HES CDL/CNL/GR LOG DATED 08-JUL-2007					
LOGGED W/O PSI.					
Prints: 4					
YOUR CREW TODAY IS:M. COBO, J. REID, K. GOSS					
THANK YOU FOR CHOOSING WEATHERFORD WIRELINE SRVS. GRD.JUNCTION,CO. (970)263-8501					
		EQUIPMENT DATA			
Bit Size	8.750"	Run No.	Tool Type	Tool No.	Other
Well Status	NEW WELL	ONE	CENA	240	
Surface Pressure		ONE	CTBA	323	
Shut In	Flowing	ONE	GRBA	317	
0 PSI		ONE	CENB	257	
		ONE	STBA	283	
		ONE	CENA	403	

DEPTH SCALE: 5":100'	VERSION: 2007.05.14.34 RLS
MAIN PASS W/O PSI.	

138955 sbt12	
FINISH DEPTH: 8.4 Feet	DIRECTION: UP
DATE: 08/14/2007	TIME: 15:42
MODE: ORIGINAL	

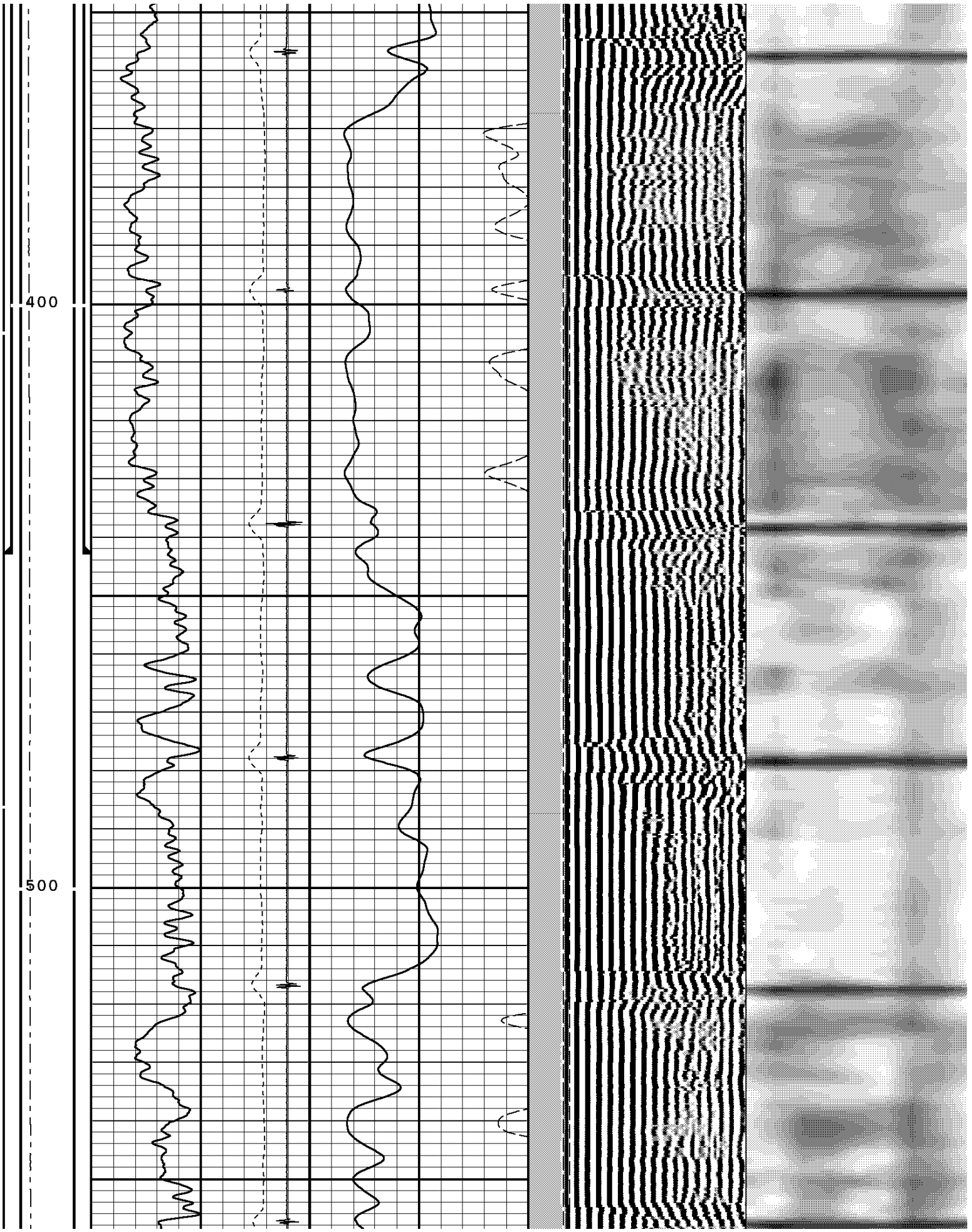
Tension	Collar Locator			FREE PIPE GATE		
	-7200 Millivolts 800			200 Microseconds 1200		
	Gamma Ray			FREE PIPE GATE		
	0 API 150			200 Microseconds 1200		
	TRAVEL TIME 3FT	AMPLITUDE 3FT	VARIABLE DENSITY 5	VARIABLE ENERGY		
0 LB 1200	330 Microseconds 230	0 Millivolts 100	200 Microseconds 1200	0 Millivolts 80		

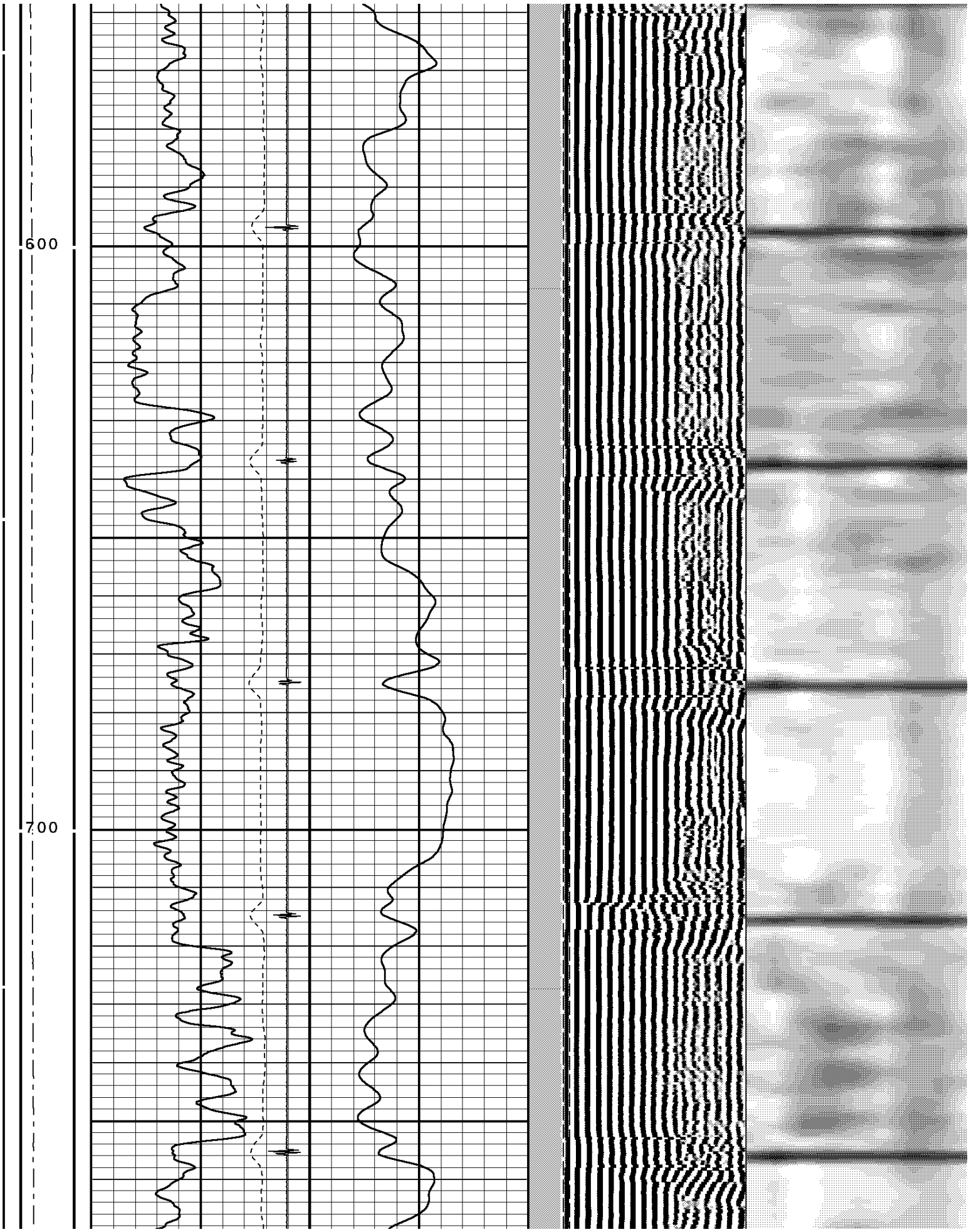


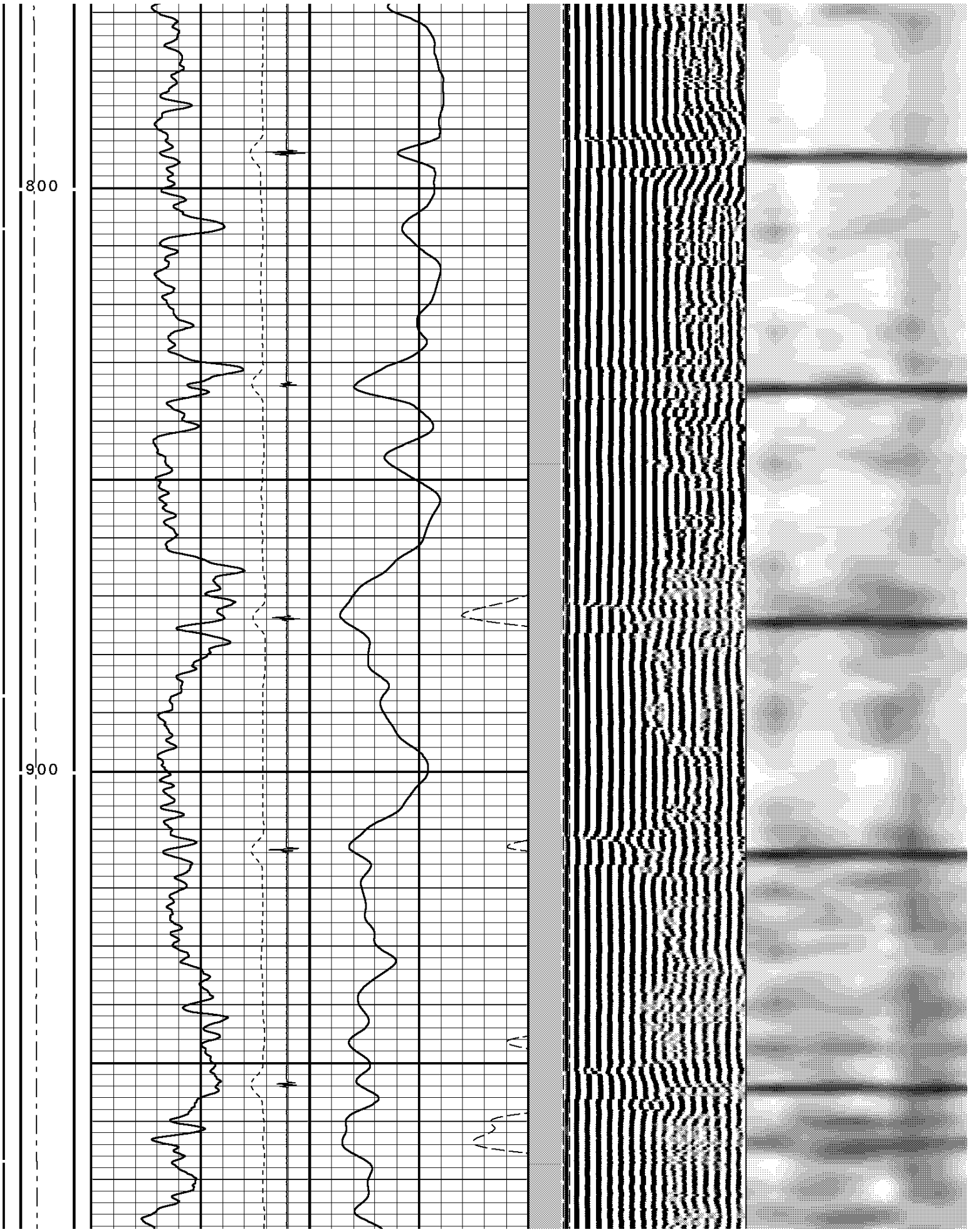


200

300



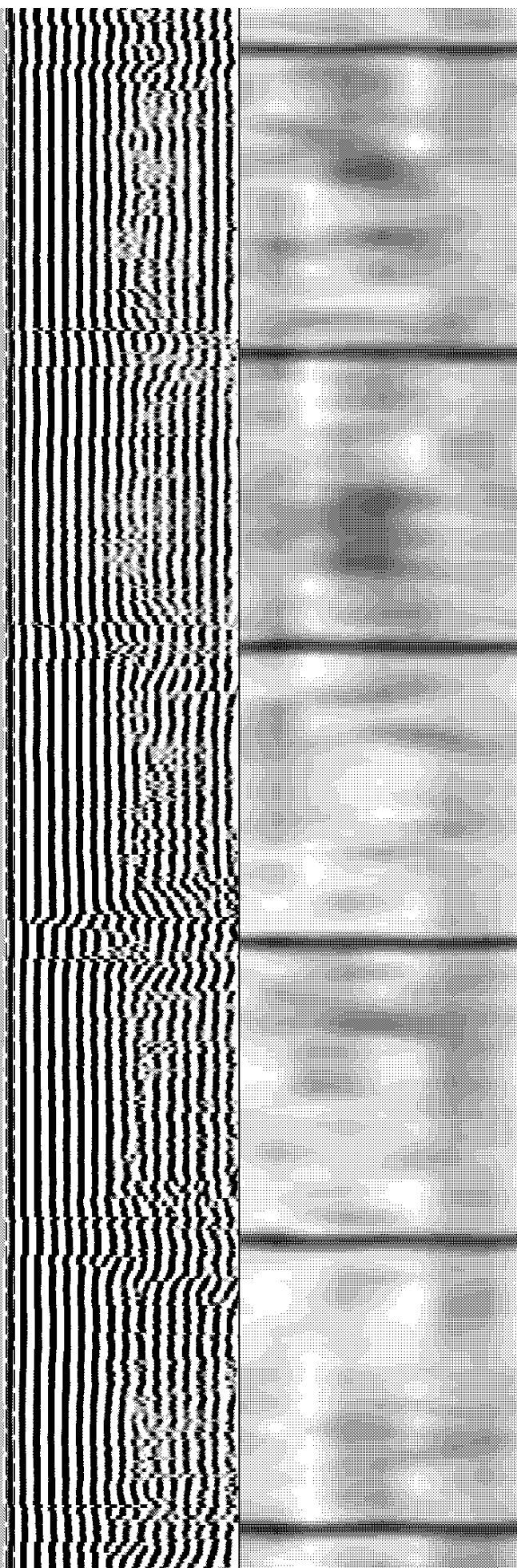
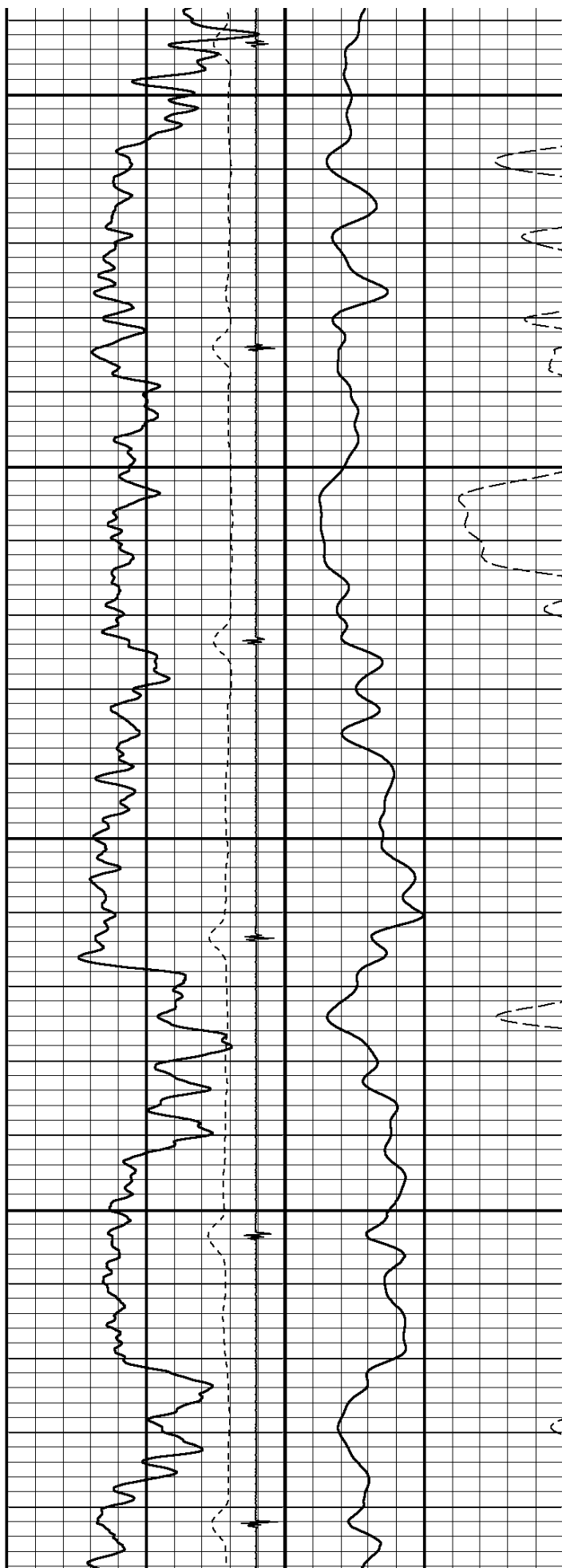


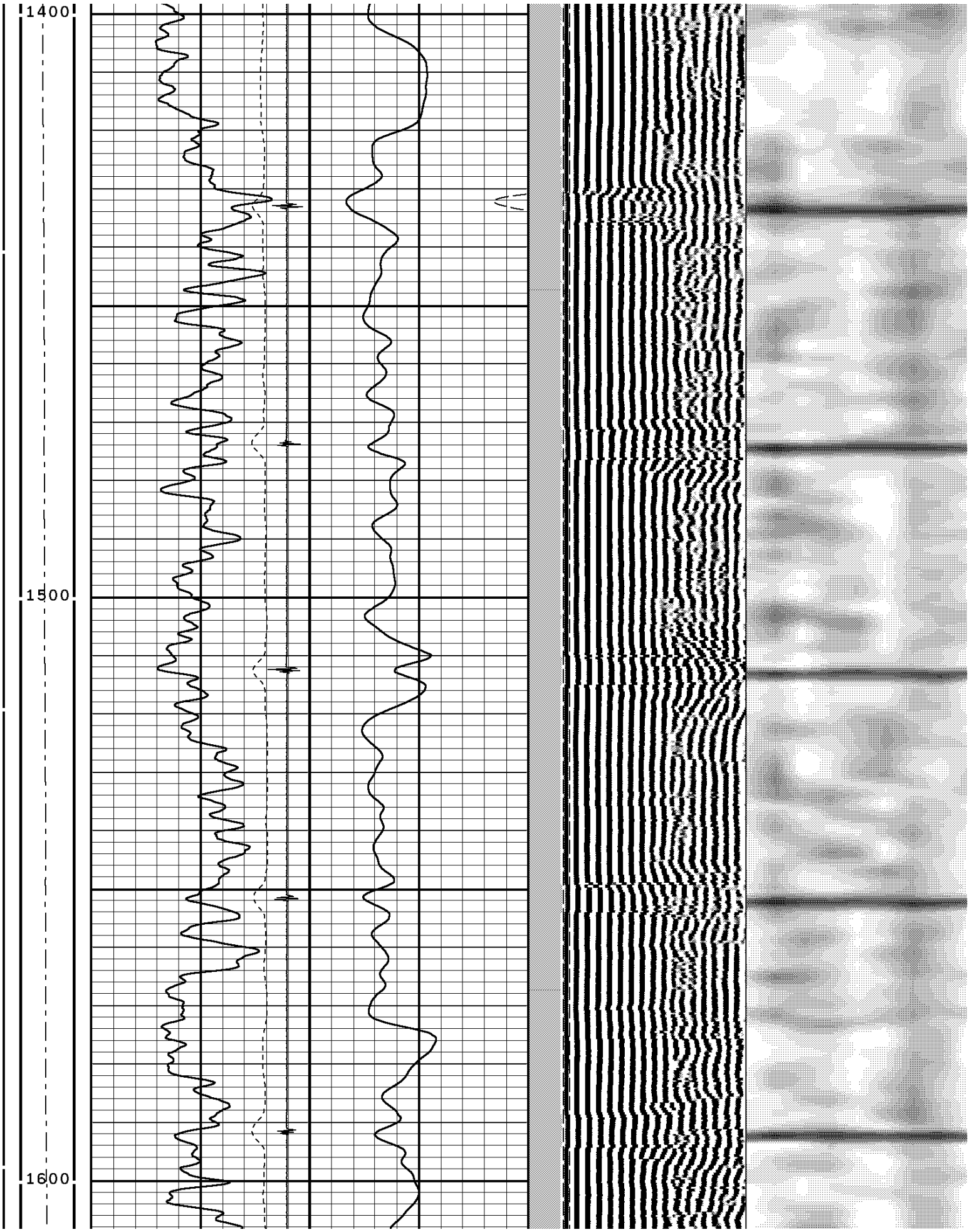


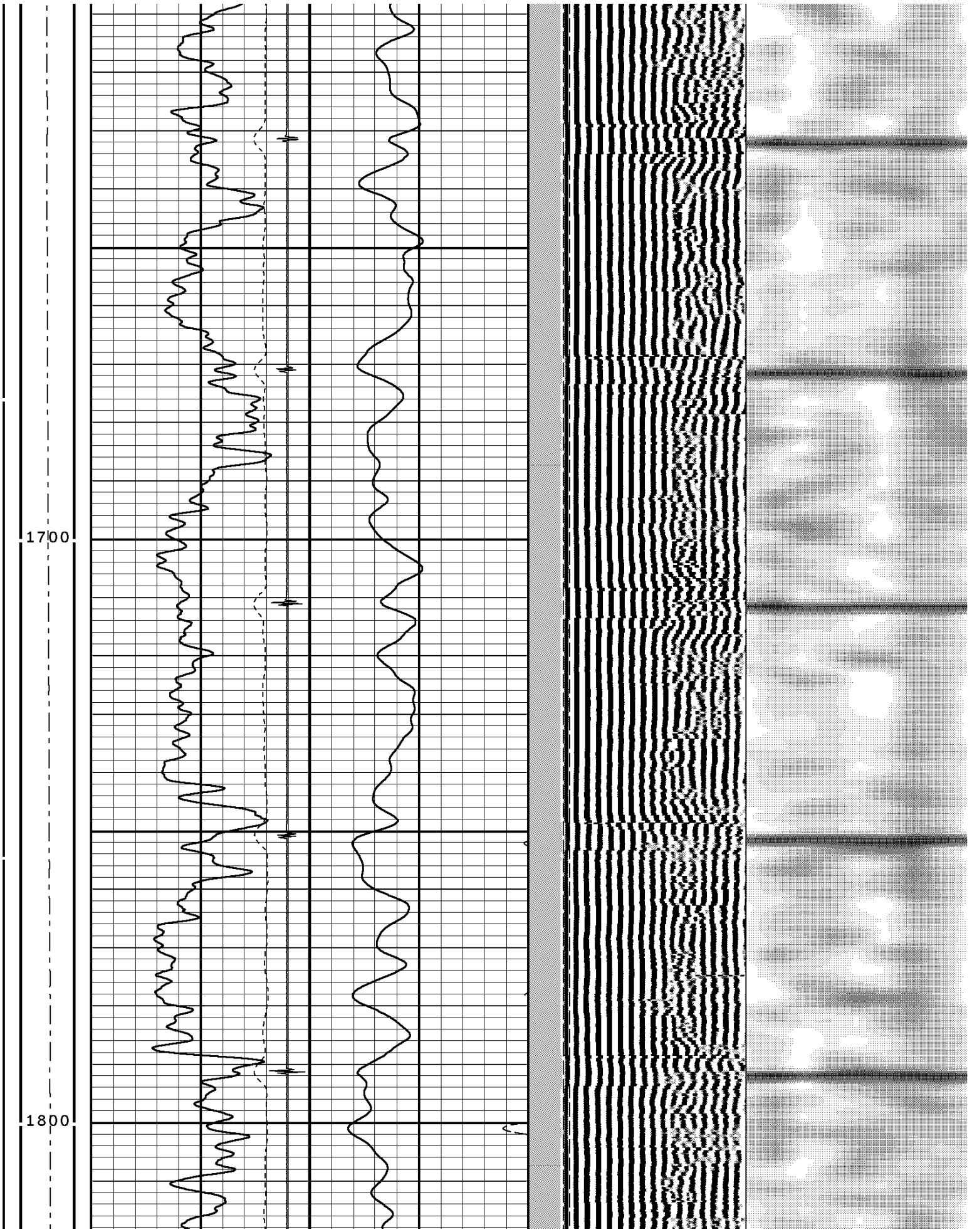


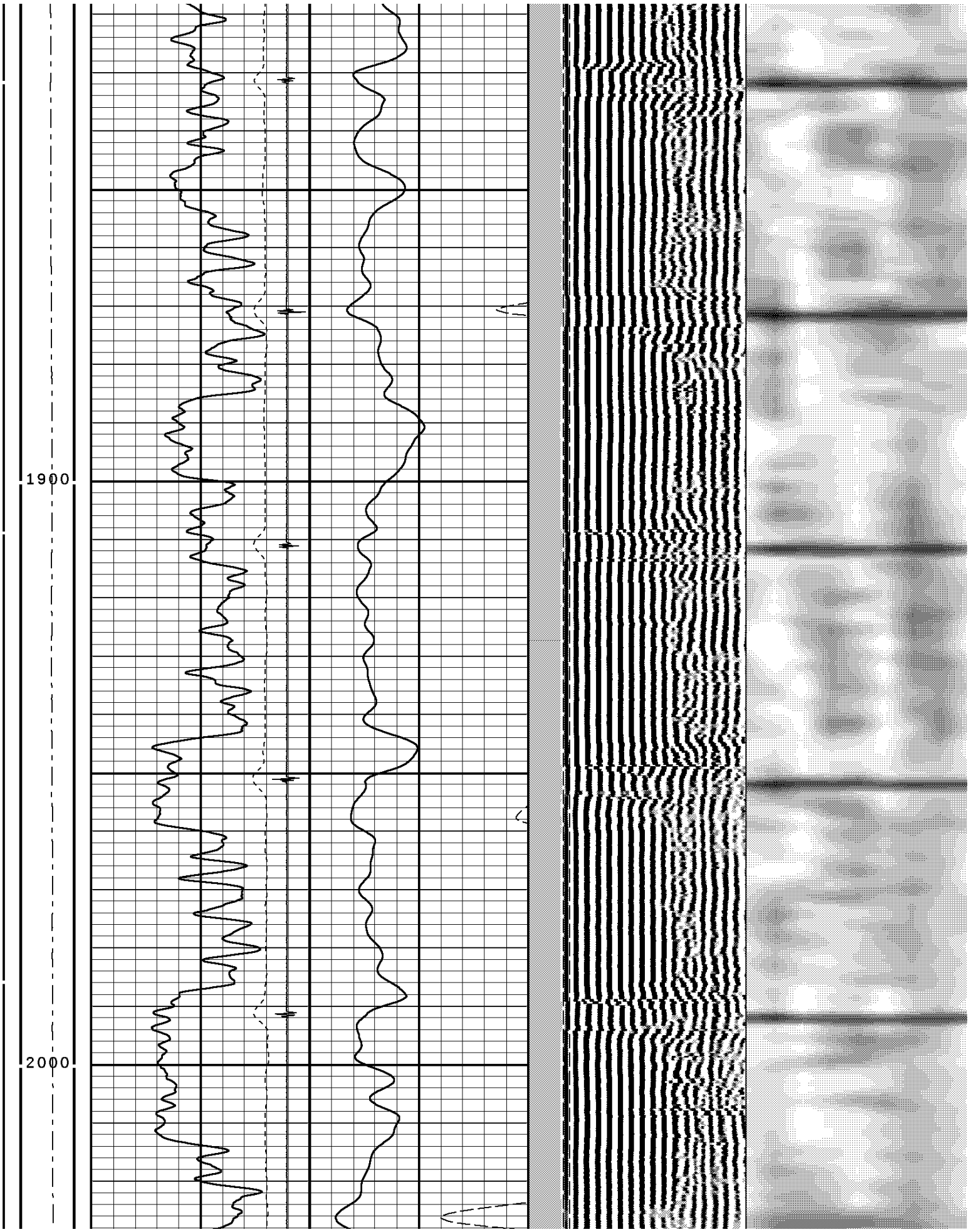
1200

1300

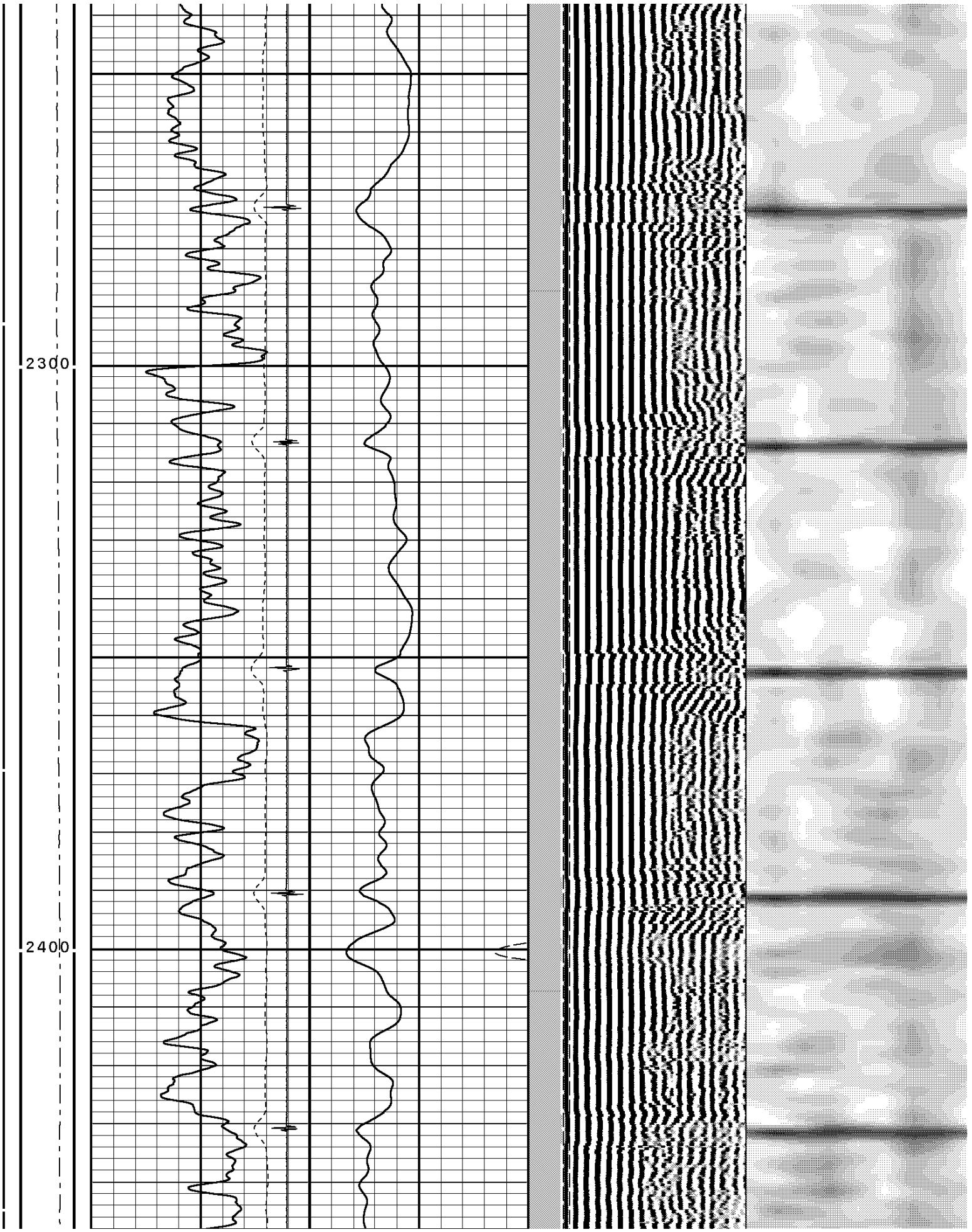


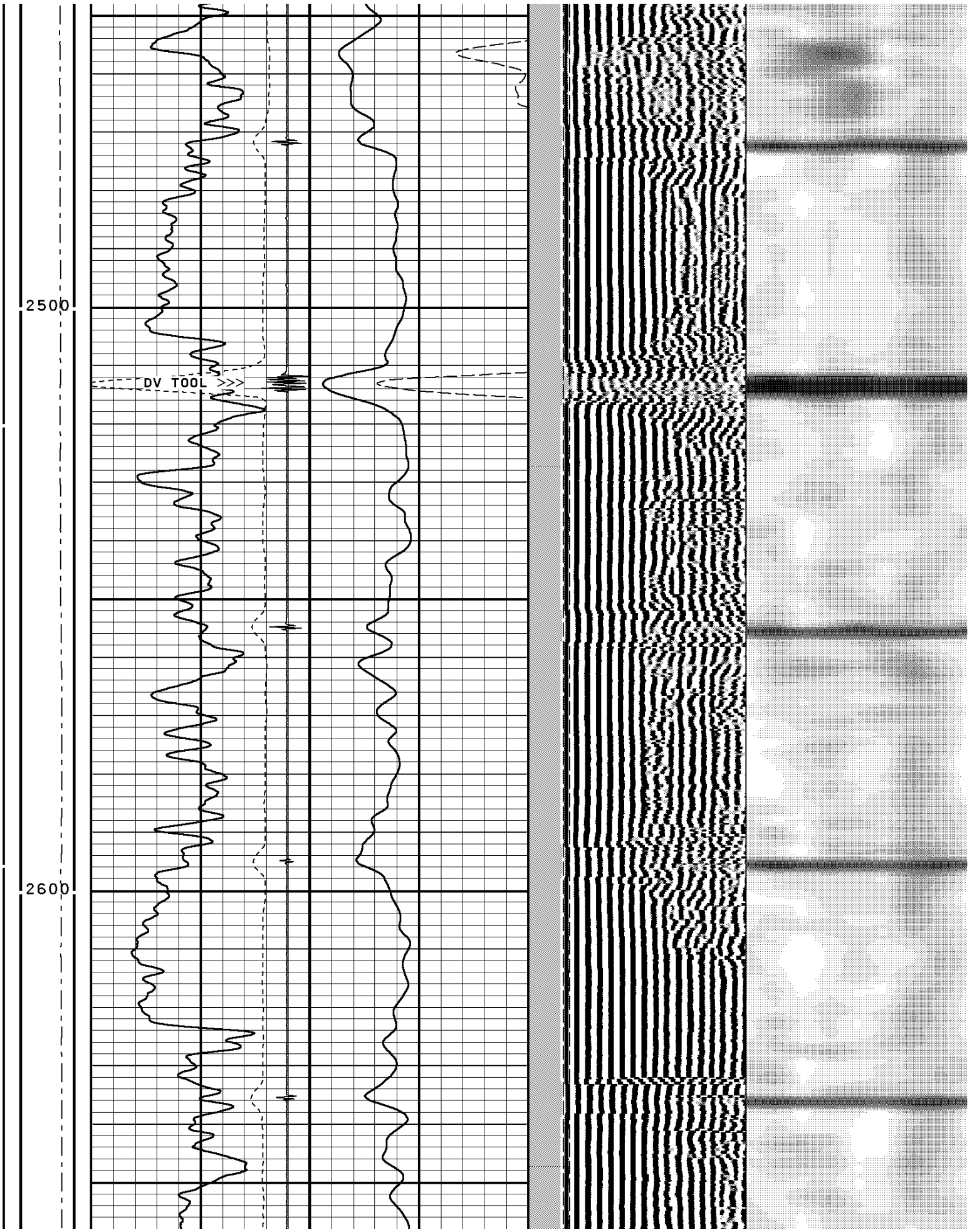


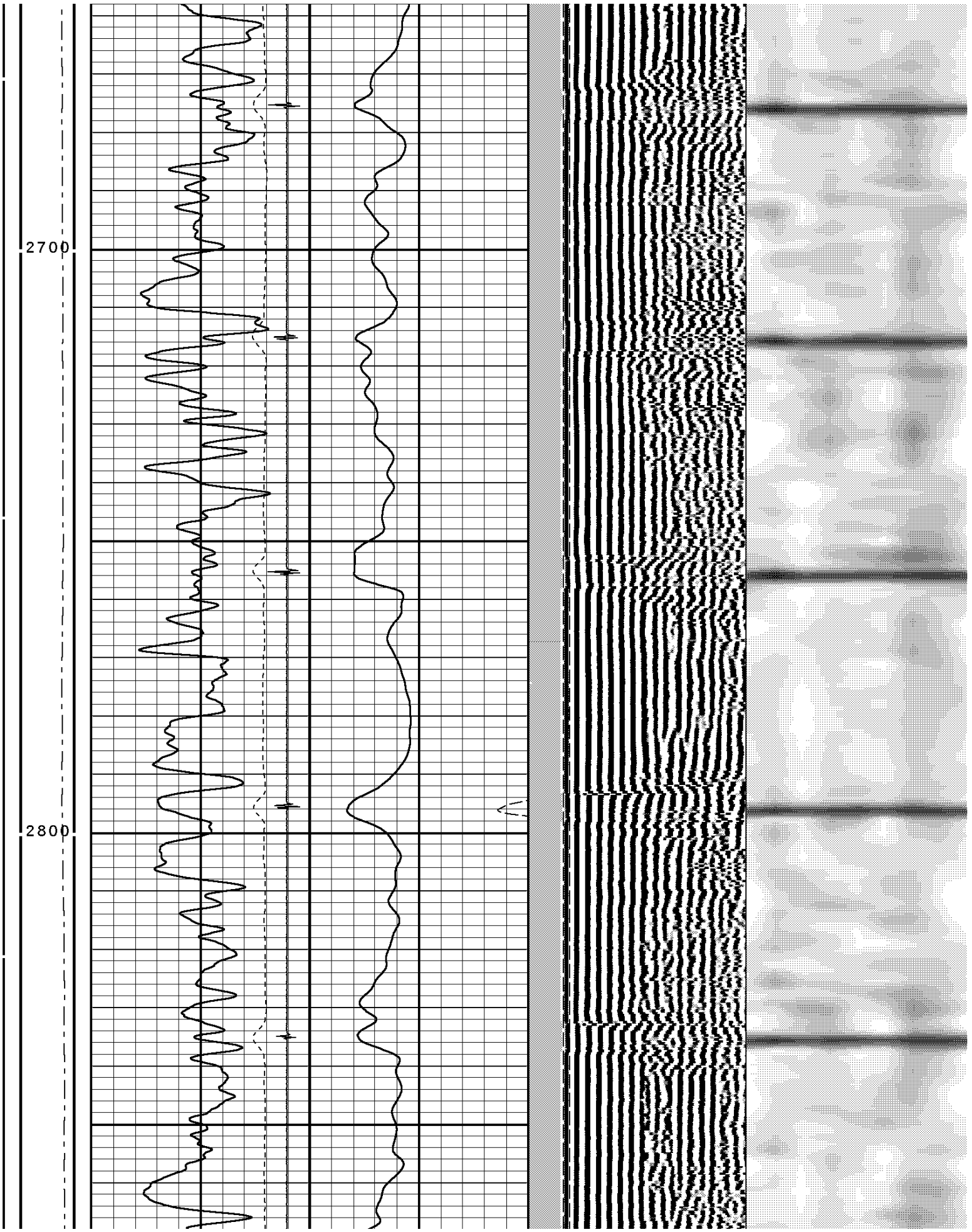


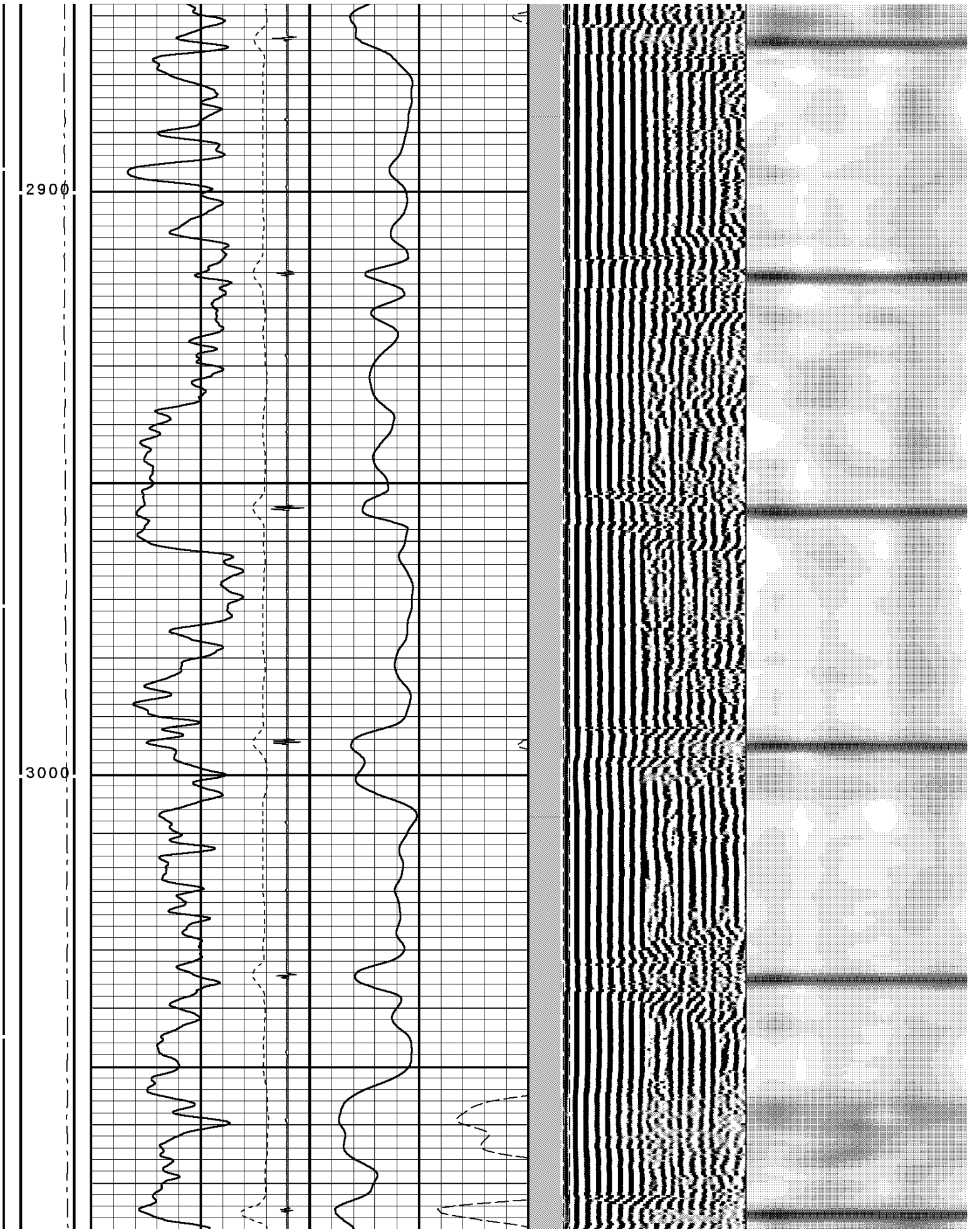






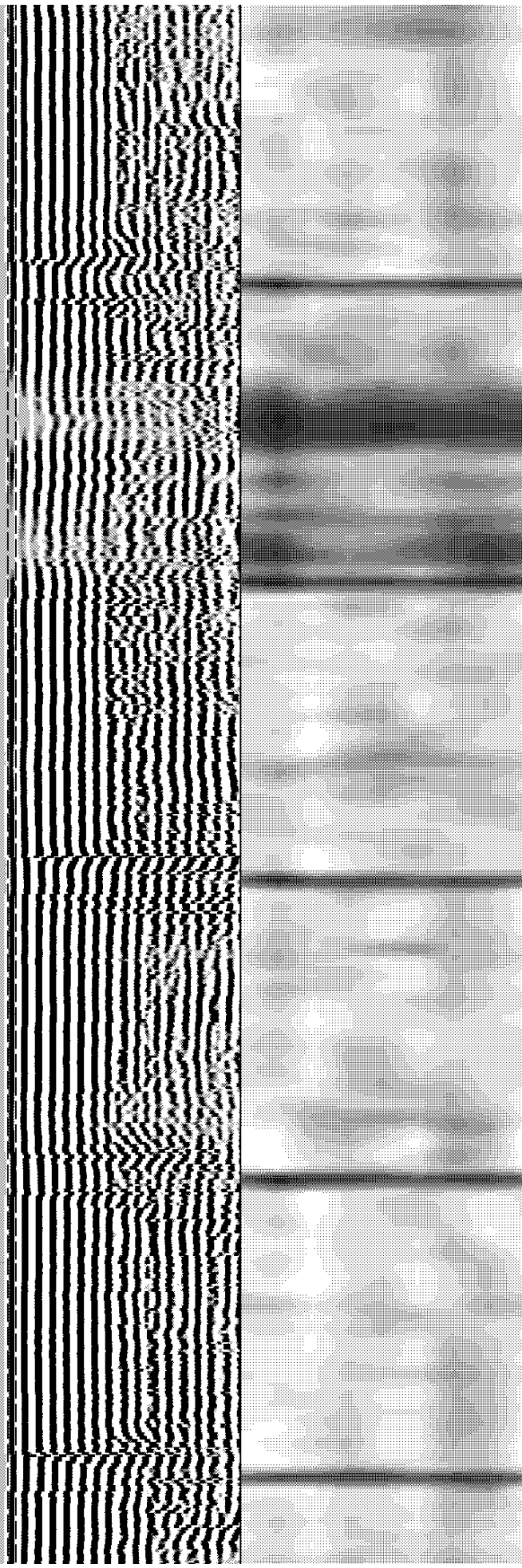
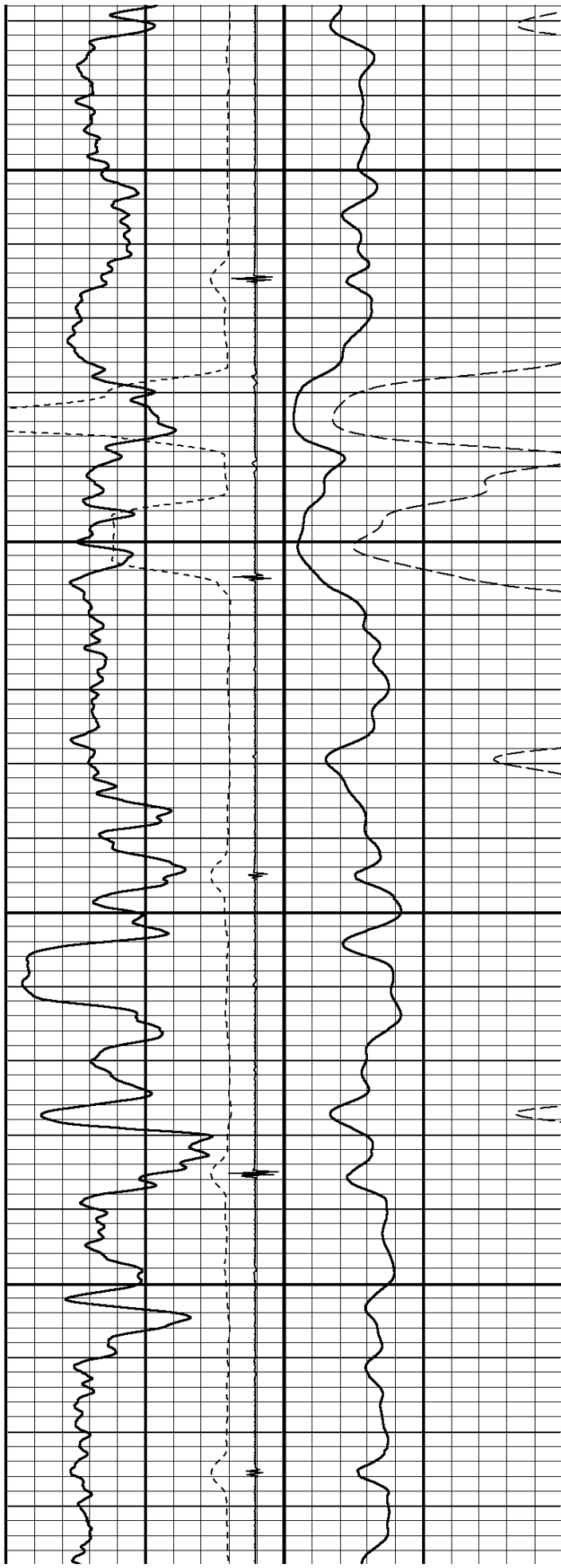






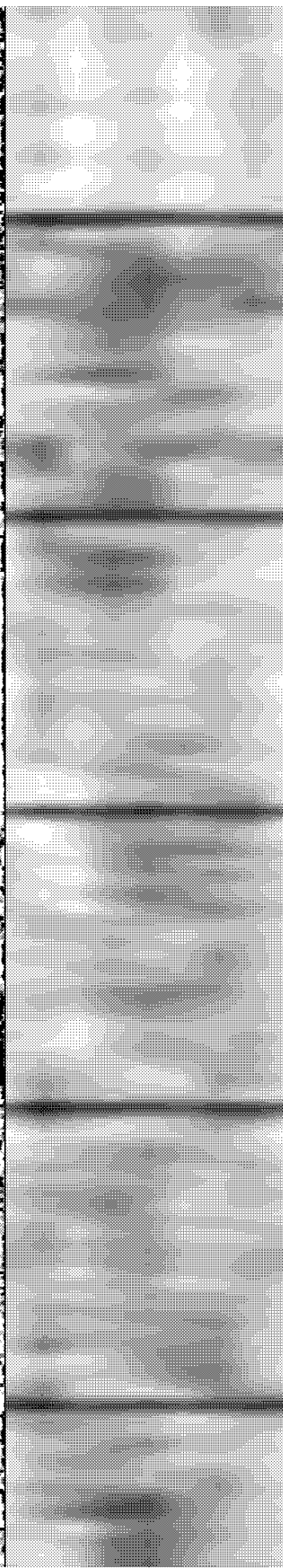
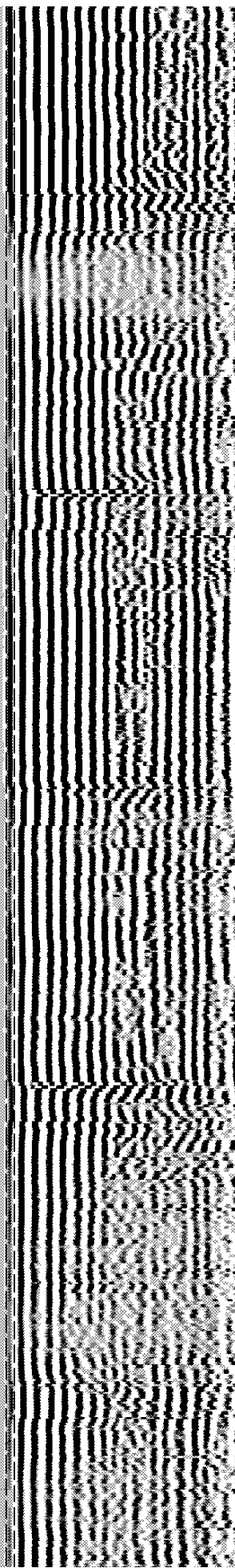
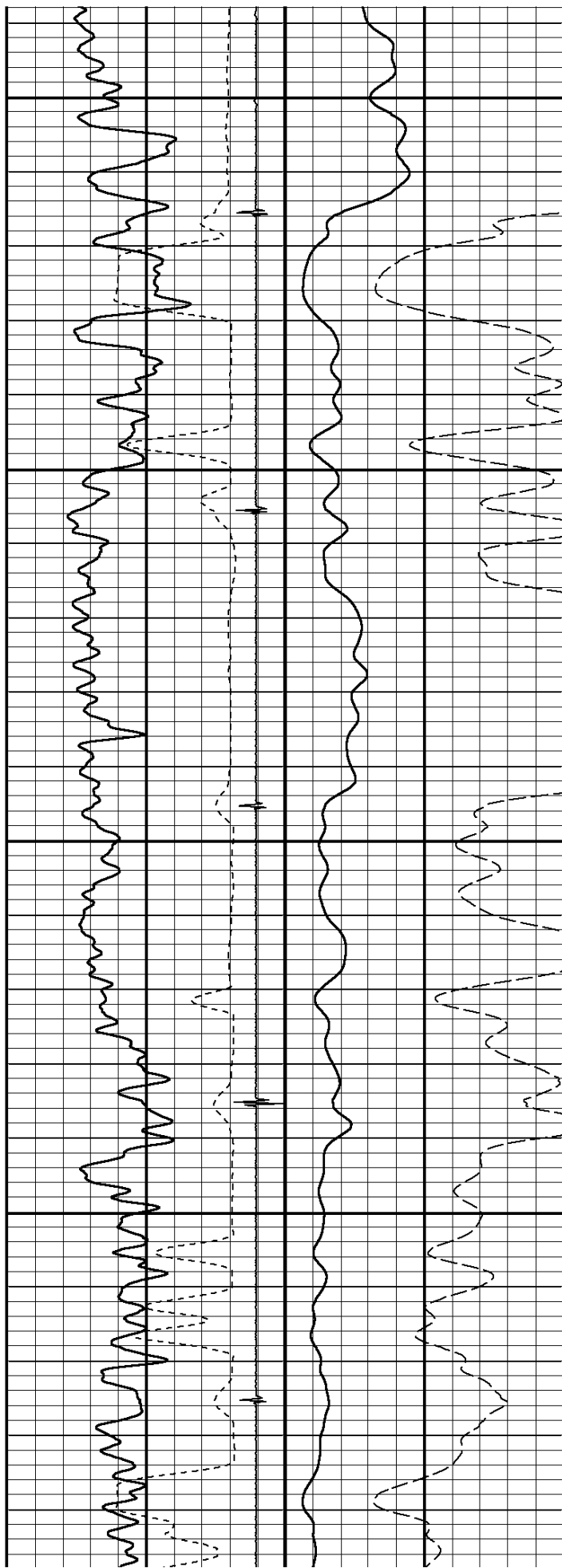
3100

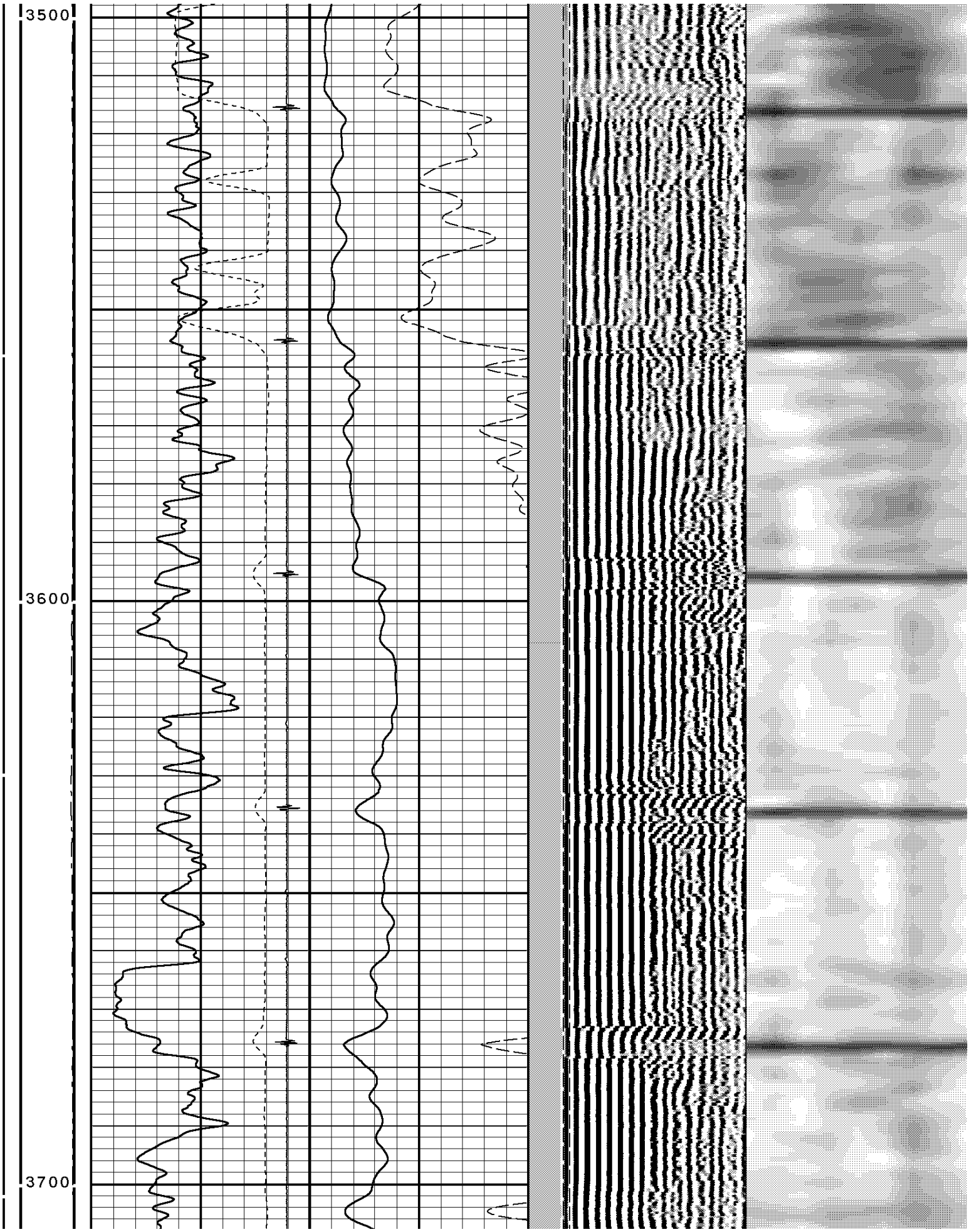
3200

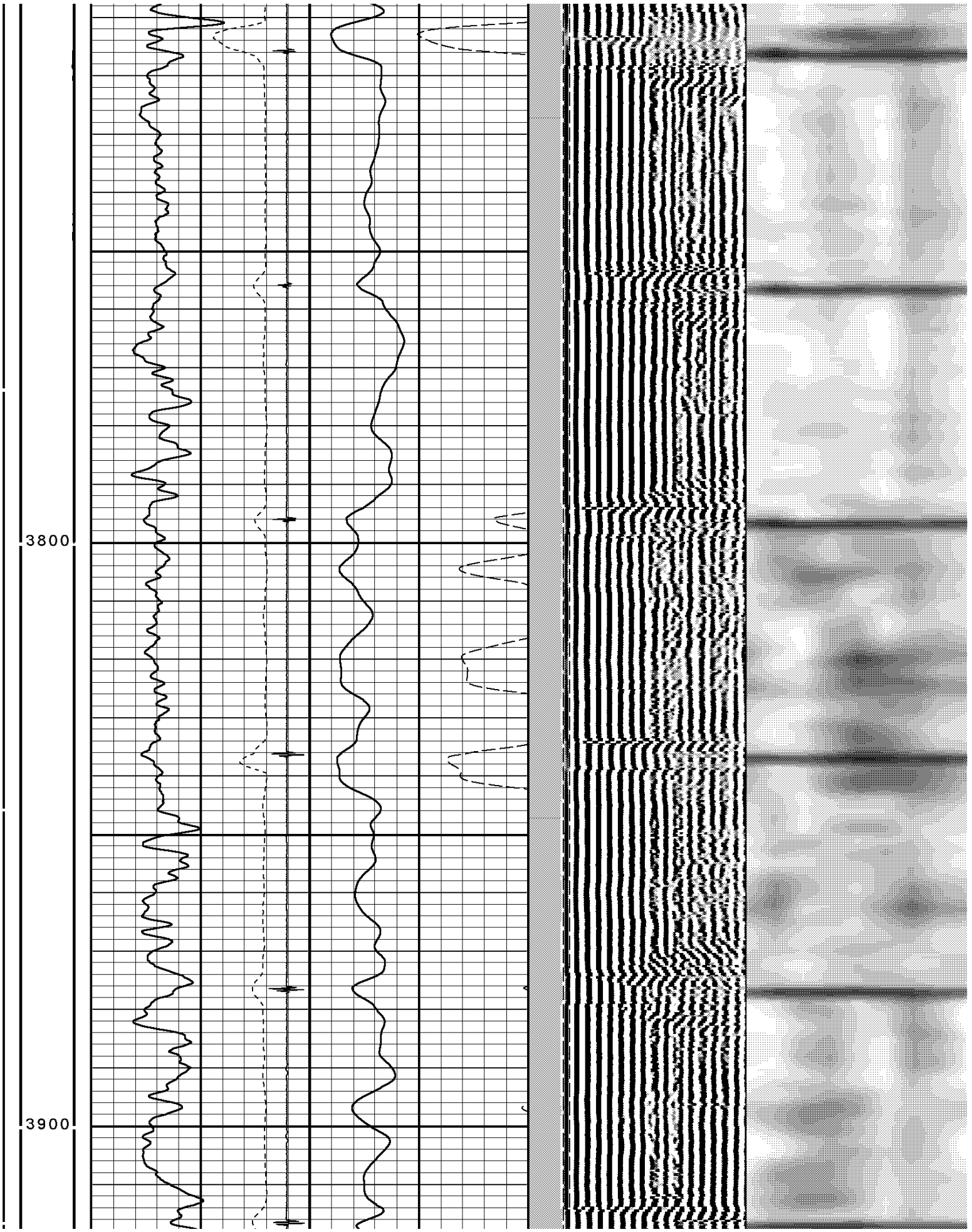


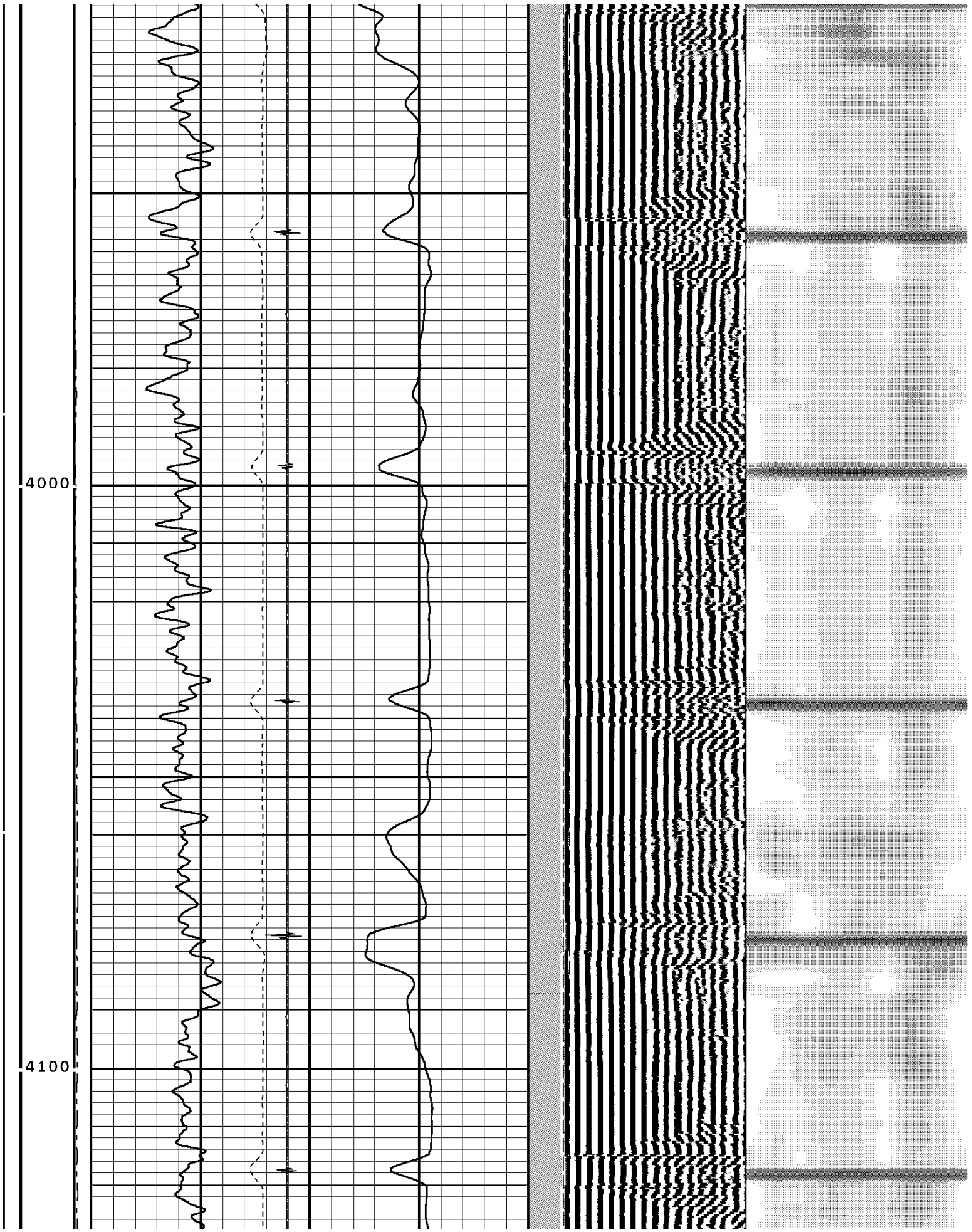
3300

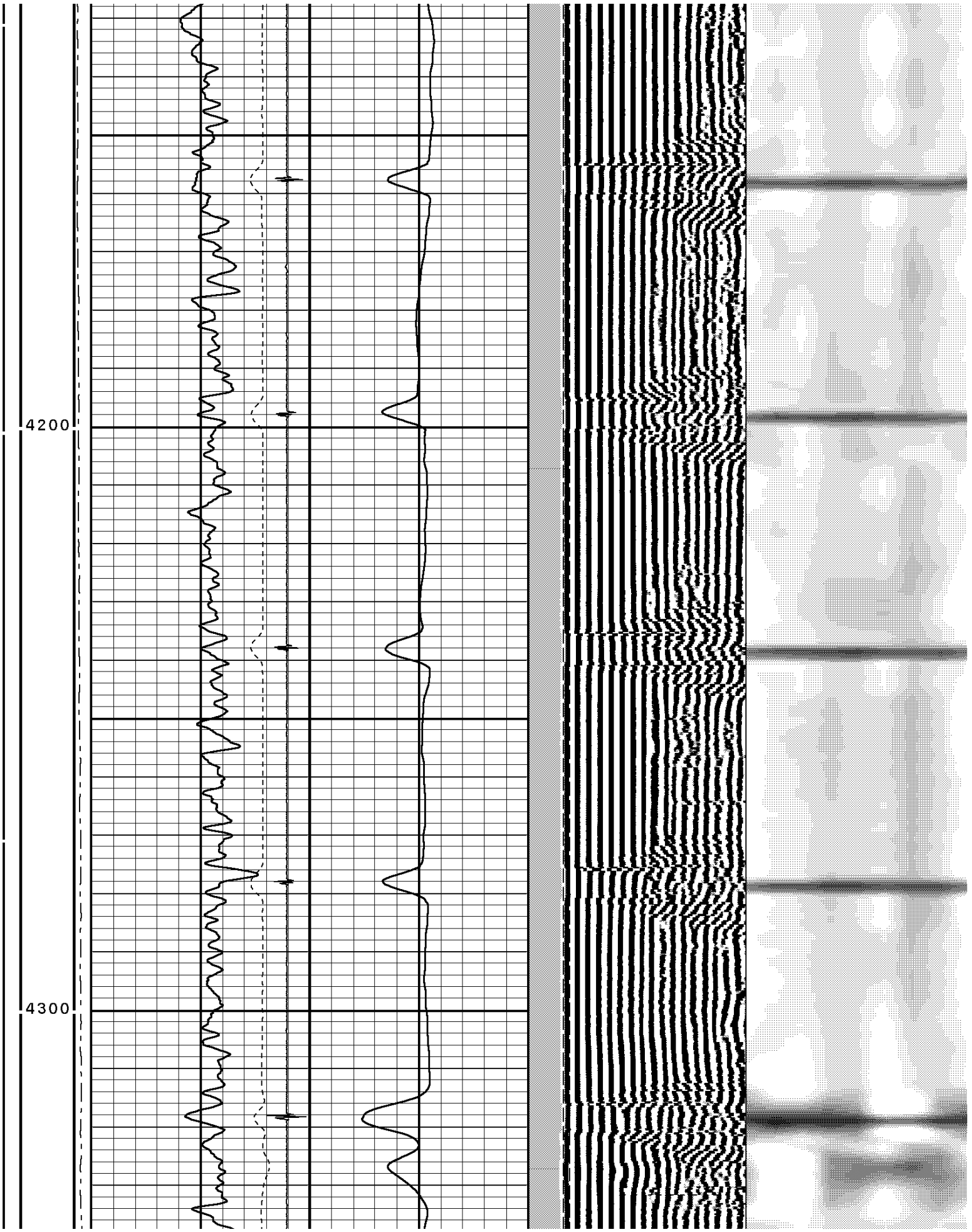
3400

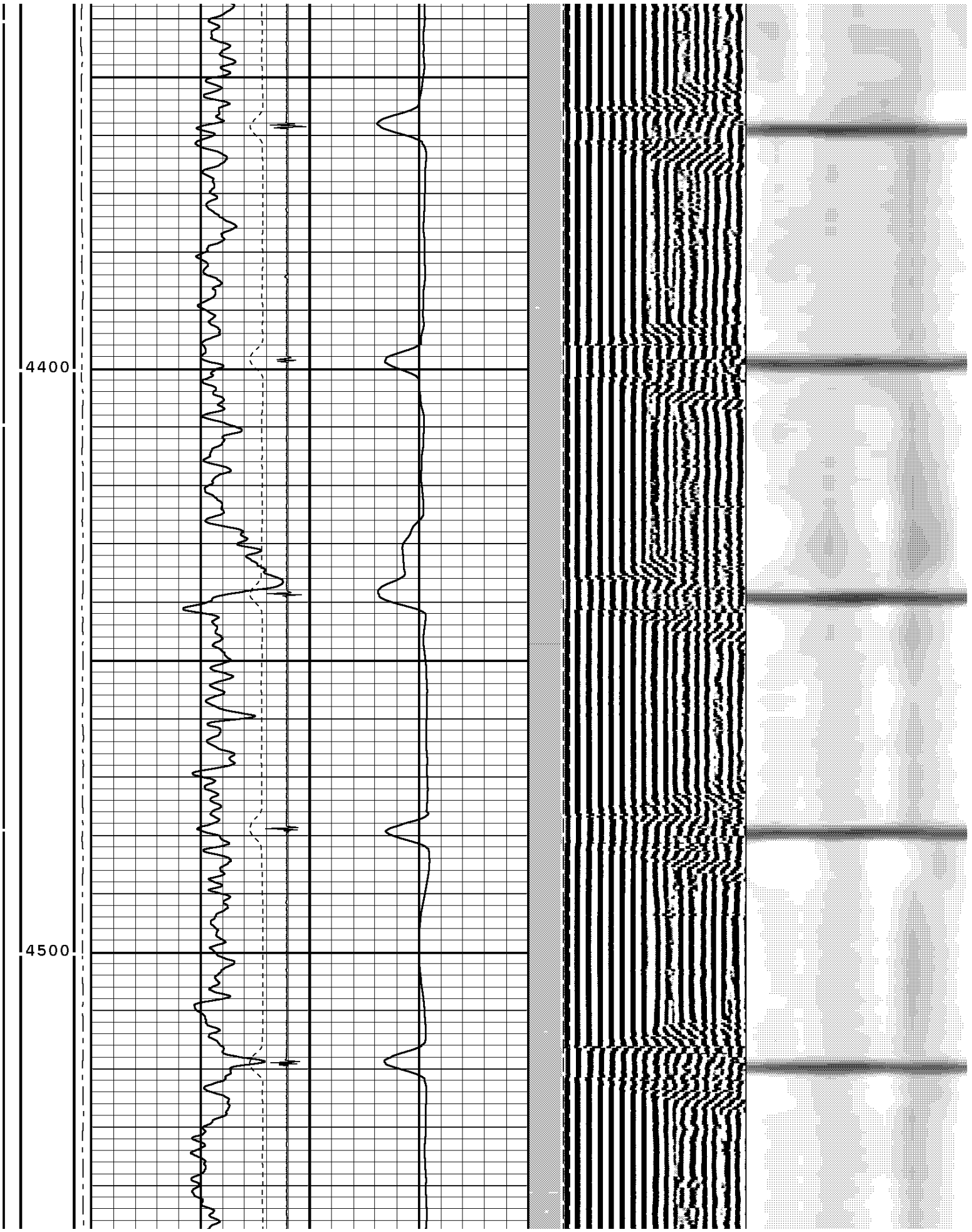






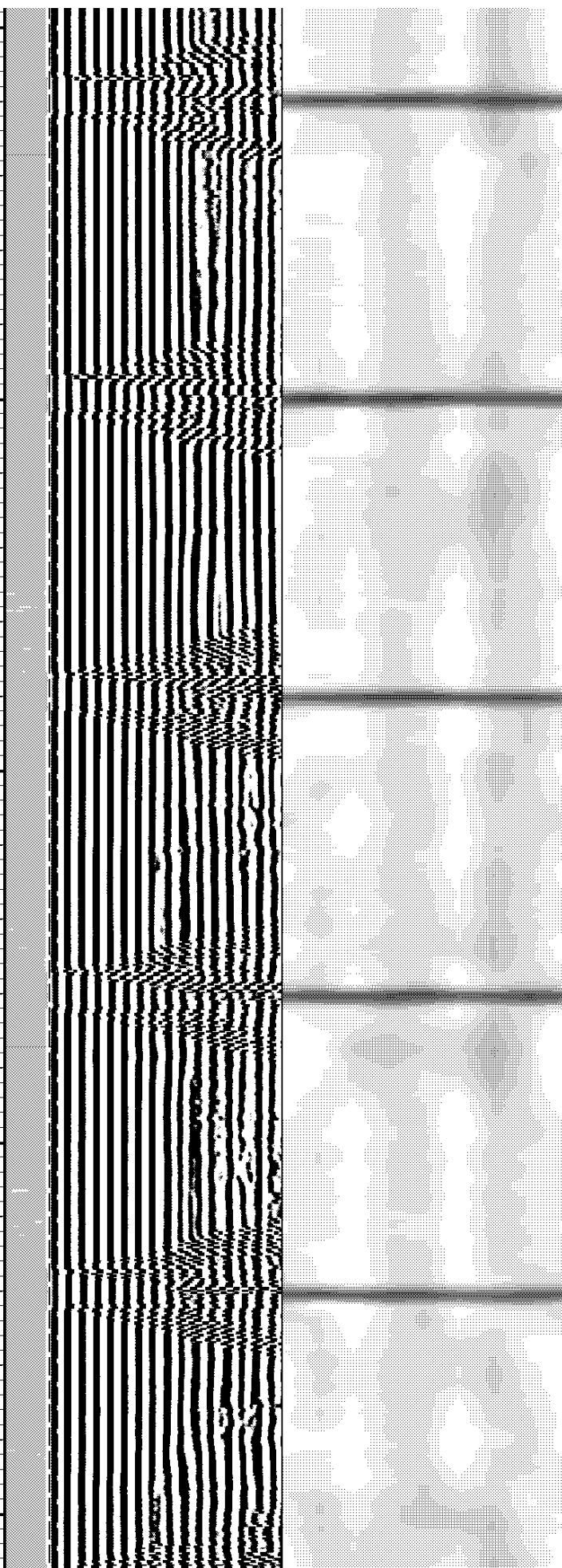


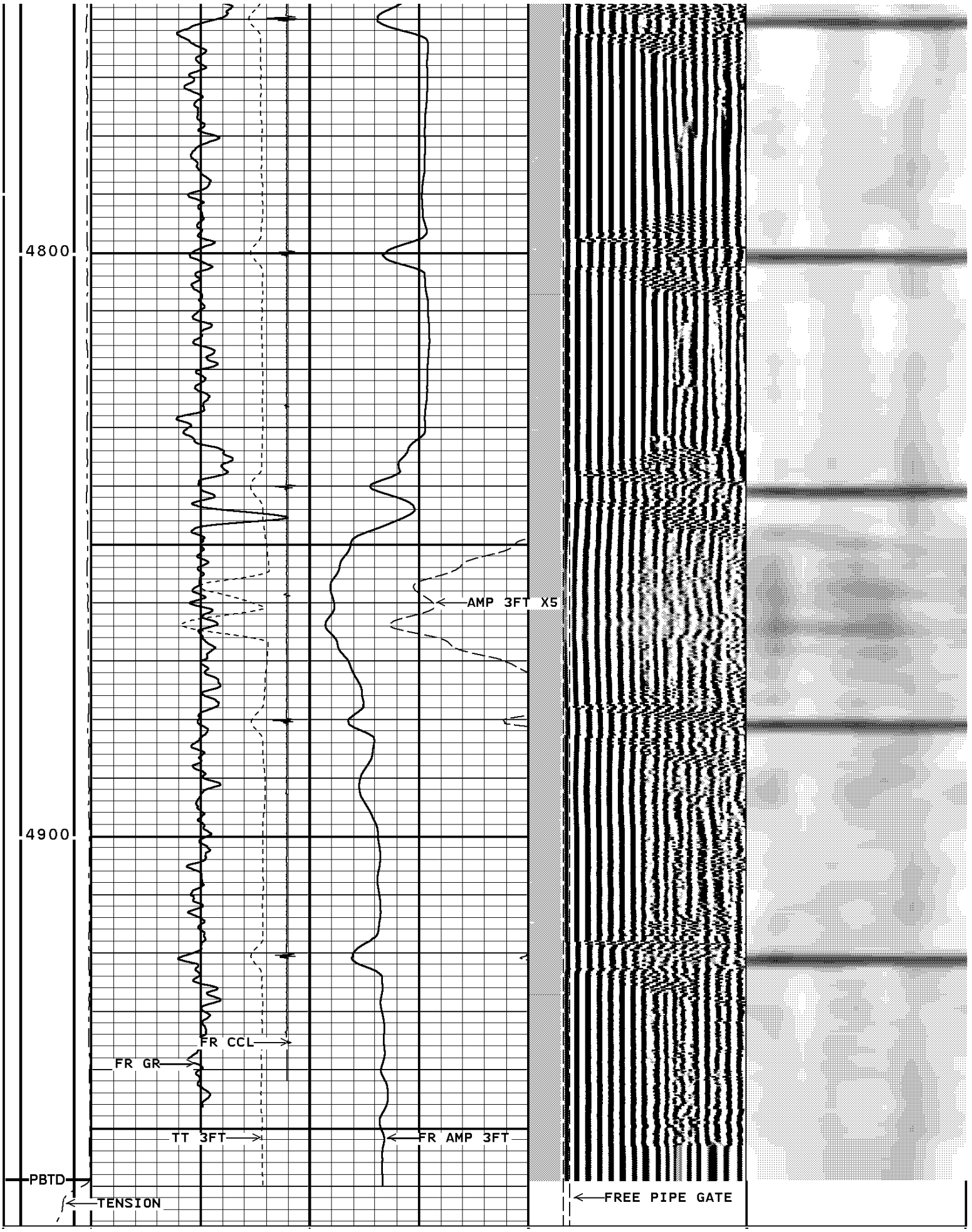




4600

4700





Tension	TRAVEL TIME 3FT			AMPLITUDE 3FT			VARIABLE DENSITY 5			VARIABLE ENERGY		
0 LB 1200	330	Microseconds	230	0	Millivolts	100	200	Microseconds	1200	0	Millivolts	80
Gamma Ray			AMP X 5			FREE PIPE GATE						
0	API	150	0	Millivolts	20	200	Microseconds	1200				
Collar Locator						FREE PIPE GATE						
-7200	Millivolts	800				200	Microseconds	1200				

START DEPTH: 4965.5 DIRECTION: UP DATE: 08/14/2007 TIME: 15:41 MODE: ORIGINAL
138955 sbt12

MAIN PASS W/O PSI.

DEPTH SCALE: 5":100'

VERSION: 2007.05.14.34 RLS

SYSTEM CONSTANTS

NAME	DESCRIPTION	VALUE	UNITS
CSIZ	Casing Size	5.500	Inches
CWEI	Casing Weight	17.00	Pounds/Foot
CCL0	Ccl Offset	0	
SWAN	Sheave Wheel Angle	0.00	Degrees
AMNS	Min Ampl 100% Bond	1	Millivolts
AMXS	Max Ampl 0% Bond	72	Millivolts
TTC	TT Correction	0	Microseconds
DTF	DT Fluid	200.0	Microsec/Foot
TTFF	Fast Formation TT	43.5	Microsec/Foot
CCS	Cement Cmpr Strength	1200.0	PSI
CVEL	Casing Velocity	56.5	Microsec/Foot
MATT	Maximum Attenuation	12.00	Decibels/Foot

DEPTH SCALE: 5":100'

VERSION: 2007.05.14.34 RLS

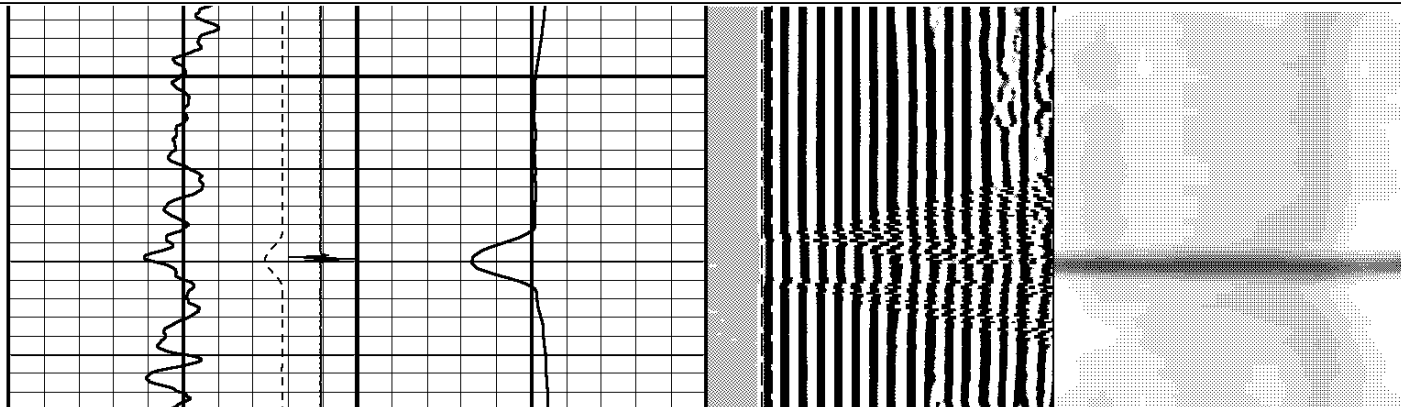
REPEAT PASS W/O PSI.

138955 sbt11

FINISH DEPTH: 4692.1 Feet DIRECTION: UP DATE: 08/14/2007 TIME: 15:48 MODE: ORIGINAL

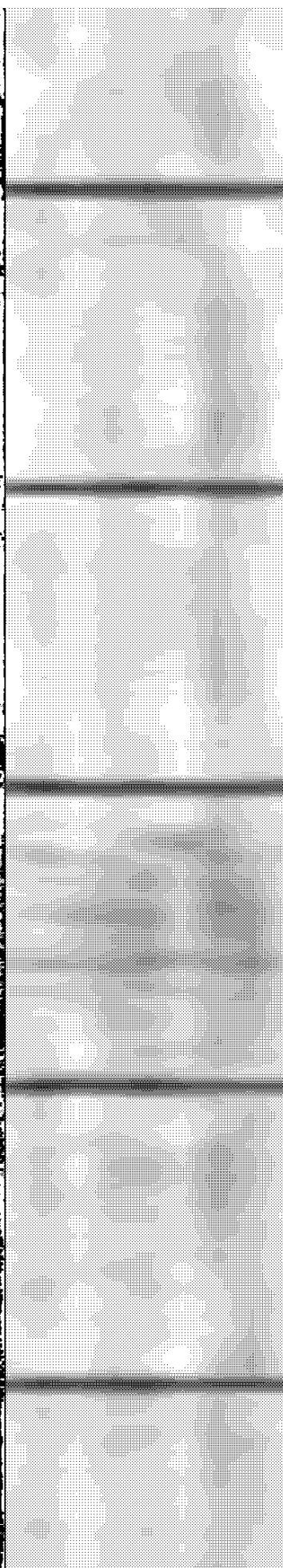
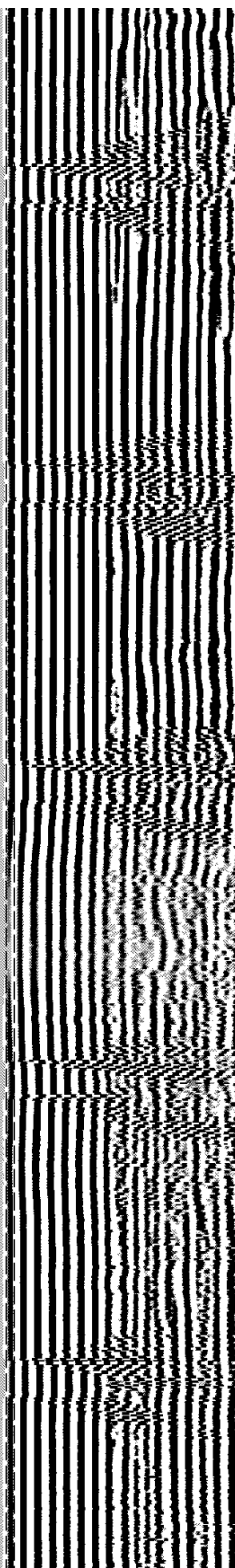
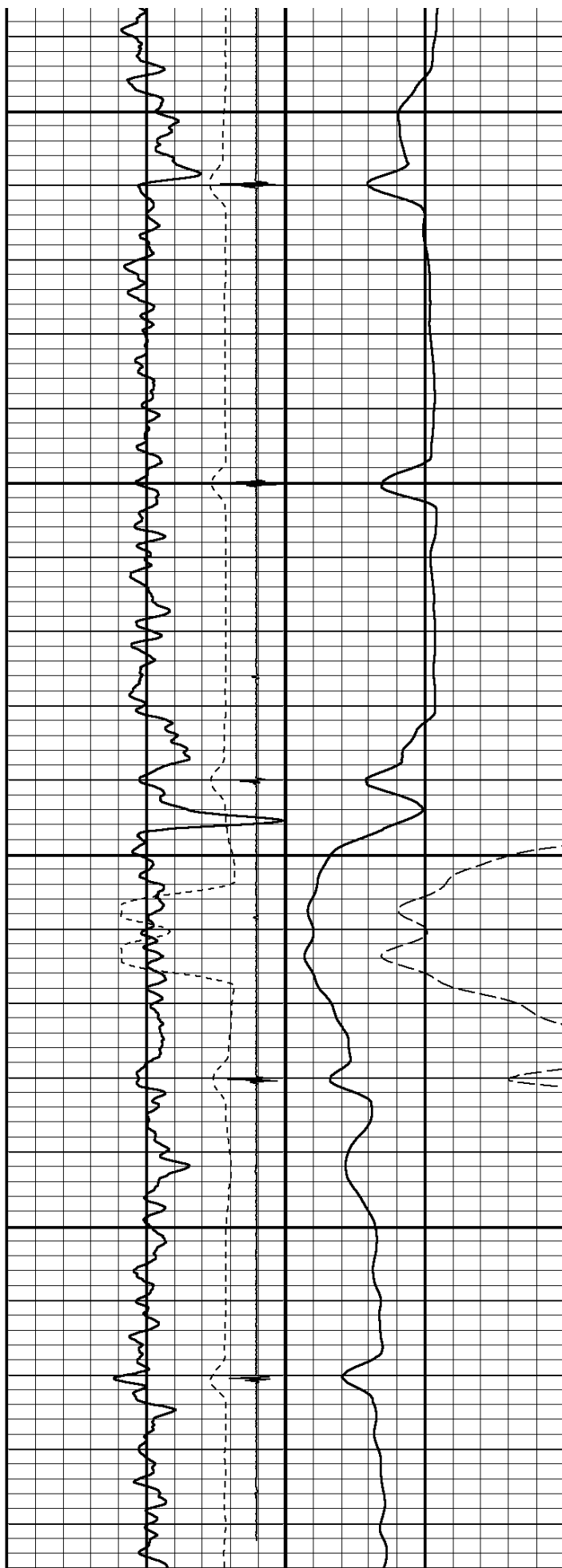
	Collar Locator					FREE PIPE GATE						
	-7200	Millivolts	800			200	Microseconds	1200				
	Gamma Ray			AMP X 5		FREE PIPE GATE						
	0	API	150	0	Millivolts	20	200	Microseconds	1200			
Tension	TRAVEL TIME 3FT			AMPLITUDE 3FT		VARIABLE DENSITY 5			VARIABLE ENERGY			
0 LB 2000	330	Microseconds	230	0	Millivolts	100	200	Microseconds	1200	0	Millivolts	80

4700



4800

4900



Tension	TRAVEL TIME 3FT			AMPLITUDE 3FT			VARIABLE DENSITY 5		
0 LB 2000	330	Microseconds	230	0	Millivolts	100	200	Microseconds	1200
	Gamma Ray				AMP X 5			FREE PIPE GATE	
0	API	150	0	Millivolts	20		200	Microseconds	1200
	Collar Locator							FREE PIPE GATE	
-7200	Millivolts	800					200	Microseconds	1200

START DEPTH: **4966.1** DIRECTION: **UP** DATE: **08/14/2007** TIME: **15:48** MODE: **ORIGINAL**
138955 sbt11

REPEAT PASS W/O PSI.

DEPTH SCALE: **5":100'**

VERSION: **2007.05.14.34** RLS

SYSTEM CONSTANTS

NAME	DESCRIPTION	VALUE	UNITS
CSIZ	Casing Size	5.500	Inches
CWEI	Casing Weight	17.00	Pounds/Foot
CCLO	Ccl Offset	0	
SWAN	Sheave Wheel Angle	0.00	Degrees
AMNS	Min Ampl 100% Bond	1	Millivolts
AMXS	Max Ampl 0% Bond	72	Millivolts
TTC	TT Correction	0	Microseconds
DTF	DT Fluid	200.0	Microsec/Foot
TTFF	Fast Formation TT	43.5	Microsec/Foot
CCS	Cement Compr Strength	1200.0	PSI
CVEL	Casing Velocity	56.5	Microsec/Foot
MATT	Maximum Attenuation	12.00	Decibels/Foot

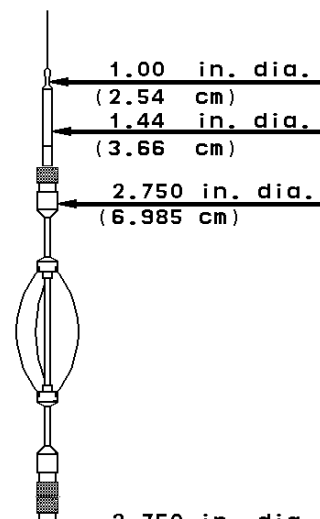
1 7/16" Cablehead

Weight 2.2 LB.
Length 12 IN.
Max. Diameter 1.44 IN.

Total Stack Weight 223.0 LBS. in air
Total Stack Length 27.83 FT.

Slim Hole Centralizer

Weight 15 lbs
Length 2.49 FT.
Max. Diameter 2.750 IN.



Collar Locator

Weight 39.8 LBS.
Length 3.40 FT.
Max. Diameter 2.75 IN.

Slim Hole Gamma Ray

Weight 39.8 LBS.
Length 4.71 FT.
Max. Diameter 2.750 IN.

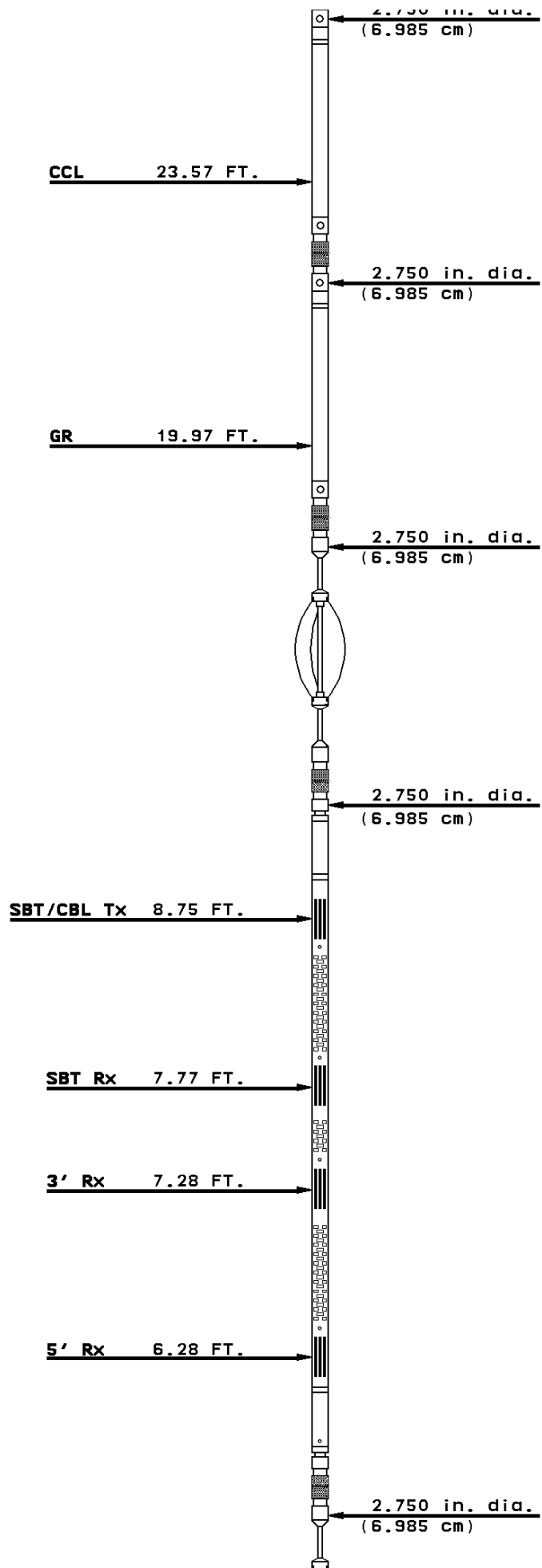
Slim Hole Centralizer

Weight 22 LBS.
Length 3.08 FT.
Max. Diameter 2.750 IN.

Sector Bond

Weight 89.2 LBS>
Length 10.32 FT.
Max. Diameter 2.750 IN.

Slim Hole Centralizer



Weight	<u>15.0 LBS.</u>
Length	<u>2.82 FT.</u>
Max. Diameter	<u>2.750 IN.</u>



COMPANY	<u>SG INTERESTS I, LTD.</u>		
WELL	<u>FEDERAL 11-90-26 No.1</u>		
FIELD	<u>WILDCAT</u>		
COUNTY	<u>GUNNISON</u>	STATE	<u>COLORADO</u>



Weatherford®