

Project: Weld County, CO (NAD 83)
Site: Sec. 25, T9N, R61W
Well: Krier GV25-62HN
Wellbore: Plan A - Rev 0 (PERMITTING PLAN ONLY)
Design: Plan A-Rev 0 Proposal

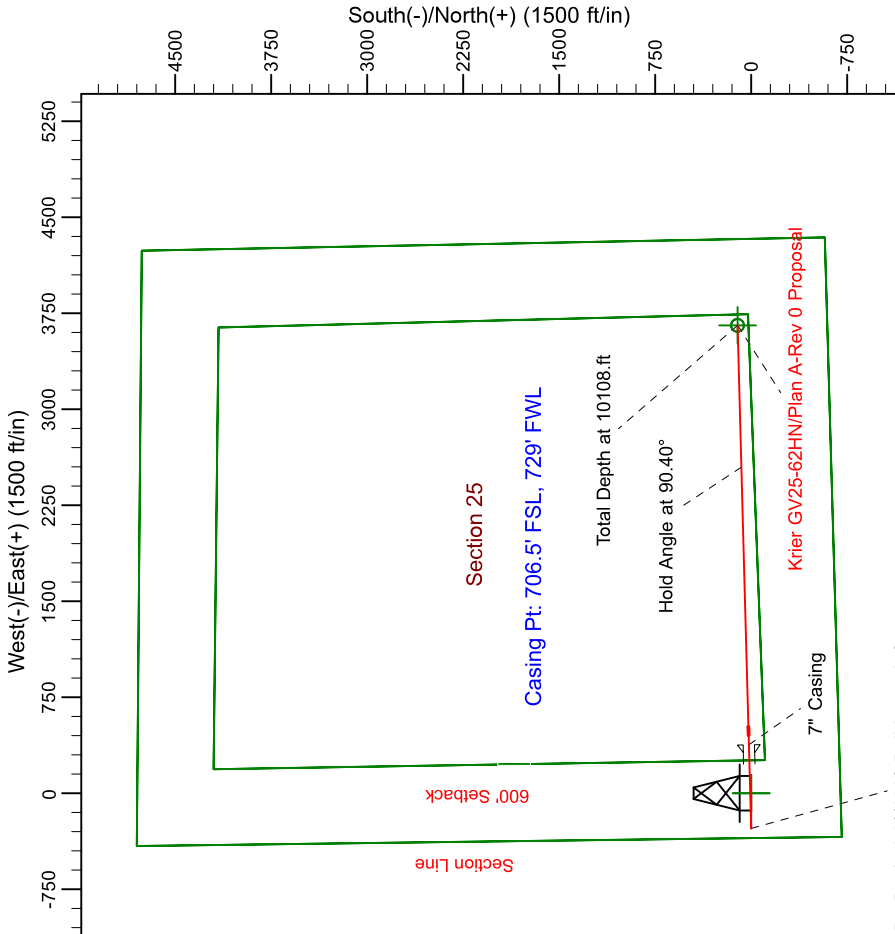
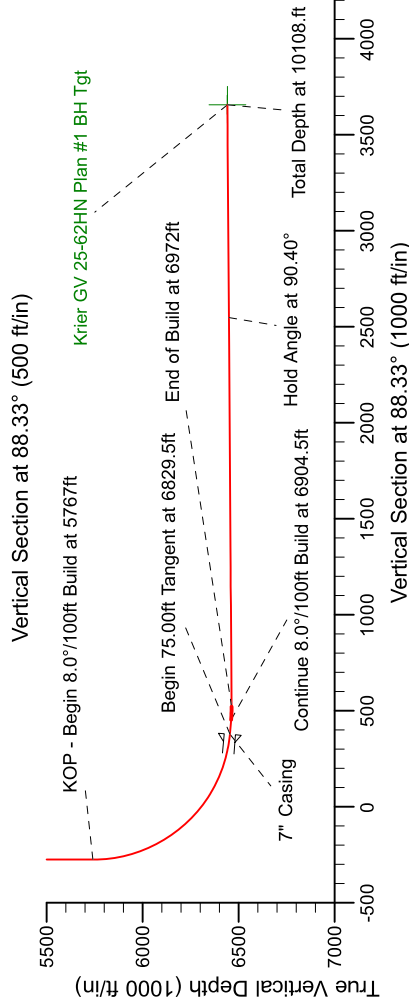
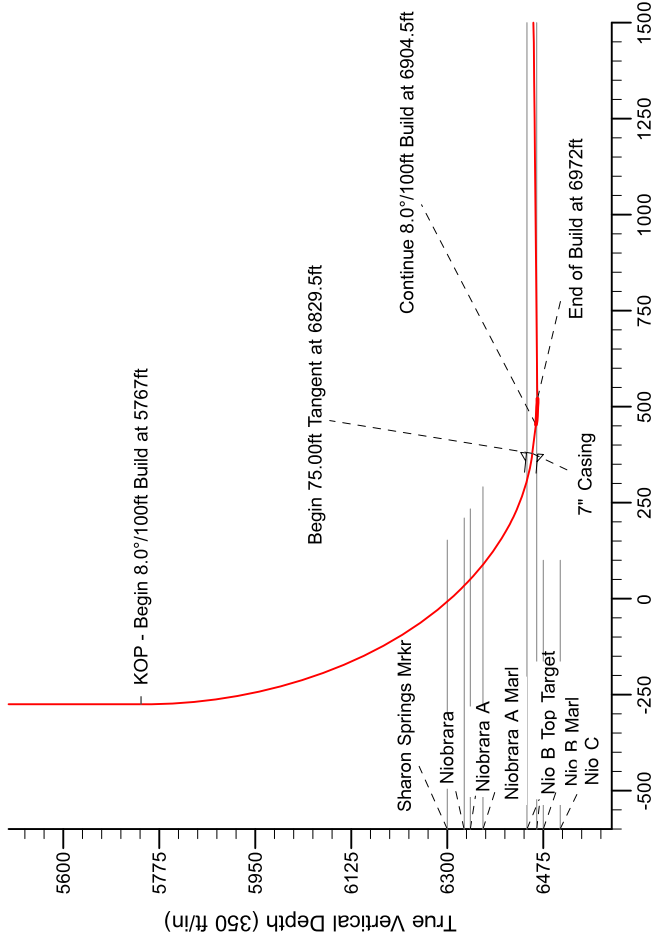
Noble Energy



SECTION DETAILS

| Sec | MD | Inc | Azi | TVD | +N/-S | +E/-W | Dleg | TFace | VSec | Target |
|-----|---------|-------|--------|--------|-------|--------|------|---------|--------|--------|
| 1 | 0.0 | 0.00 | 0.00 | 0.0 | 0.0 | 0.0 | 0.00 | 0.00 | 0.0 | 0.0 |
| 2 | 2500.0 | 0.00 | 0.00 | 2500.0 | 0.0 | 0.0 | 0.00 | 0.00 | 0.0 | 0.0 |
| 3 | 32980.1 | 12.00 | 270.00 | 2976.6 | 0.0 | -50.1 | 2.50 | 270.00 | -50.1 | -50.1 |
| 4 | 3820.6 | 12.00 | 270.00 | 3798.7 | 0.0 | -224.9 | 0.00 | 0.00 | -224.8 | -224.8 |
| 5 | 4300.7 | 0.00 | 0.00 | 4275.3 | 0.0 | -275.0 | 2.50 | 180.00 | -274.9 | -274.9 |
| 6 | 5767.0 | 0.00 | 0.00 | 5741.6 | 0.0 | -275.0 | 0.00 | 0.00 | -274.9 | -274.9 |
| 7 | 6829.5 | 85.00 | 88.45 | 6455.1 | 17.7 | 378.5 | 8.00 | 88.45 | 378.9 | 378.9 |
| 8 | 6904.5 | 85.00 | 88.45 | 6461.6 | 19.7 | 453.2 | 0.00 | 0.00 | 453.6 | 453.6 |
| 9 | 6972.0 | 90.40 | 88.45 | 6464.3 | 21.5 | 520.6 | 8.00 | 0.00 | 521.0 | 521.0 |
| 10 | 10108.0 | 90.40 | 88.45 | 6442.5 | 106.5 | 3655.4 | 0.00 | -112.29 | 3656.9 | 3656.9 |

Krier GV 25-62HN Plan #1 BH Tgt



Surface: 700' FSL, 350' FWL

BHL: 700' FSL, 675' FEL

WELL DETAILS: Krier GV25-62HN

| North | East | Lat | Long |
|-------|-----------|------------------|------------------|
| 0.0 | 458992.59 | 40° 42' 51.624 N | 104° 9' 41.580 W |

Plan: Plan A-Rev 0 Proposal (Krier GV25-62HN/Plan A - Rev 0 (PERMITTING PLAN ONLY))

Created By: Jose Patino Date: 14:07, August 02 2011

True North: 0.86°
Magnetic North: 7.88°
Strength: 53343.5mT
Dip Angle: 67.40°
Date: 8/2/2011
Model: GSE2010

Grid North is 100' East of True North (Grid Coordinates)
Magnetic North is 10' East of True North (Magnetic Coordinates)
Magnetic North is 10' East of True North (Magnetic Coordinates)
To convert to True, Direction to a Grid Direction, Subtract 0.86°
To convert to Magnetic, Direction to a Grid Direction, Add 7.88°