

Company	Merit Energy Company		
Well	Wolfe 6 I		
Field	Wattenberg		
County	Weld	State/Province	Colorado
Location	SHL: 562' FSL & 2563' FWL SE SW BHL: 1393' FSL' & 2578' FWL' Sec. 32, Twp. 4N, Rge. 66W		
Other Services	None		
Permanent Datum	GL	Elevation	4771
Log Measured From	KB	K.B. 4788 D.F. 4787 G.L. 4771	
Drilling Measured From	KB		
Date	March 02, 2007		
Run Number	1		
Depth Driller	7540		
Depth Logger	7540		
Bottom Logged Interval	7540		
Top Log Interval			
Casing Driller	625		
Casing Logger	625		
Bit Size	7-7/8"		
Type Fluid in Hole	Chem Gel		
Density / Viscosity	9.9 / 60		
pH / Fluid Loss	8.0 / 9.2		
Source of Sample	Flowline		
Rim @ Meas. Temp	3.96 @ 55° F		
Rmt @ Meas. Temp	2.97 @ 55° F		
Rmc @ Meas. Temp	4.95 @ 55° F		
Source of Rmt / Rmc	Measure / Calc		
Rm @ BHT	1.06 @ 205° F		
Time Circulation Stopped	2230 03/01/07		
Time Logger on Bottom	0730 02/03/07		
Maximum Recorded Temperature	205° F		
Equipment Number	4041		
Location	Brighton, CO		
Recorded By	Madel Sharon		
Witnessed By	Andy Peterson		

<<< Fold Here >>>

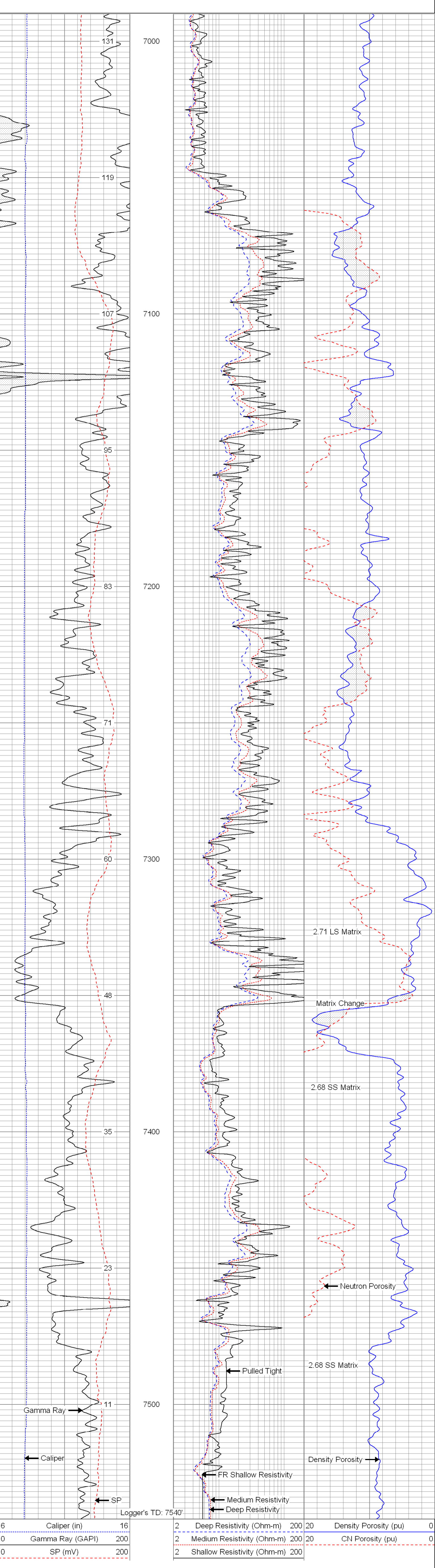
All interpretations are opinions based on inferences from electrical or other measurements and we cannot and do not guarantee the accuracy or correctness of any interpretation, and we shall not, except in the case of gross or willful negligence on our part, be liable or responsible for any loss, costs, damages, or expenses incurred or sustained by anyone resulting from any interpretation made by any of our officers, agents or employees. These interpretations are also subject to our general terms and conditions set out in our current Price Schedule.

Comments

Annular volume calculated for 4-1/2" casing  
Patterson UTI Drilling Rig 103  
Thank you for using Phoenix Surveys!!  
API #: 05-123-24528-00  
No Repeat Pass Due to excessive weight pulled off bottom

Database File:	6888.db
Dataset Pathname:	final
Presentation Format:	pdv
Dataset Creation:	Fri Mar 02 08:57:16 2007
Charted by:	Depth in Feet scaled 1:240

6	Caliper (in)	16	2	Deep Resistivity (Ohm-m)	200	20	Density Porosity (pu)	0
0	Gamma Ray (GAPI)	200	2	Medium Resistivity (Ohm-m)	200	20	CN Porosity (pu)	0
0	SP (mV)	200	2	Shallow Resistivity (Ohm-m)	200			



6	Caliper (in)	16	2	Deep Resistivity (Ohm-m)	200	20	Density Porosity (pu)	0
0	Gamma Ray (GAPI)	200	2	Medium Resistivity (Ohm-m)	200	20	CN Porosity (pu)	0
0	SP (mV)	200	2	Shallow Resistivity (Ohm-m)	200			