

<<< Fold Here >>>

### Comments

Directions:

# The Perforators LLC

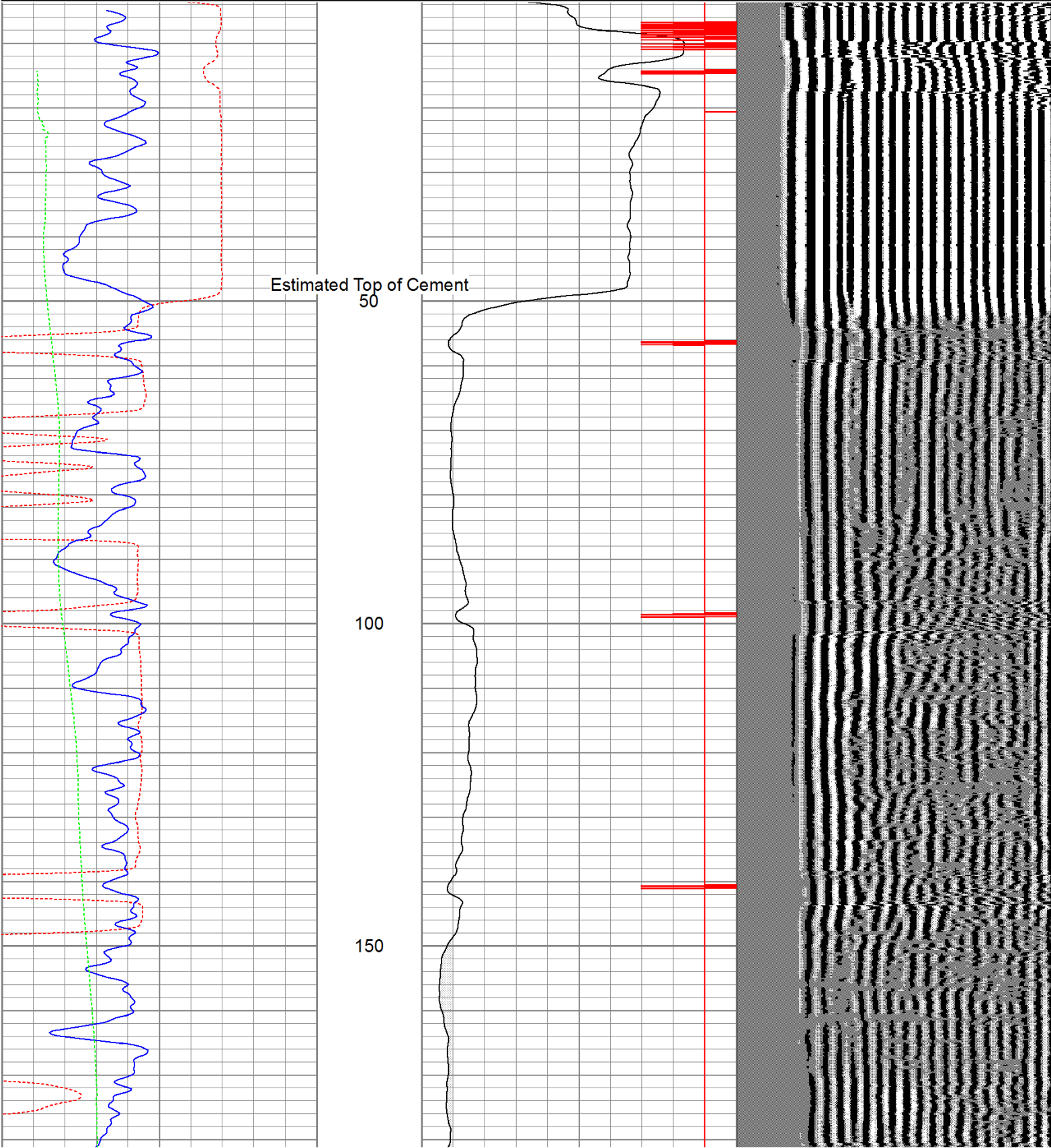
## Main Pass (1000 PSI)

Database File: idrahaje7611b.db  
Dataset Pathname: pass2.1  
Presentation Format: cbldig  
Dataset Creation: Wed Jul 06 14:47:43 2011 by Calc Open-Cased 110302  
Charted by: Depth in Feet scaled 1:240

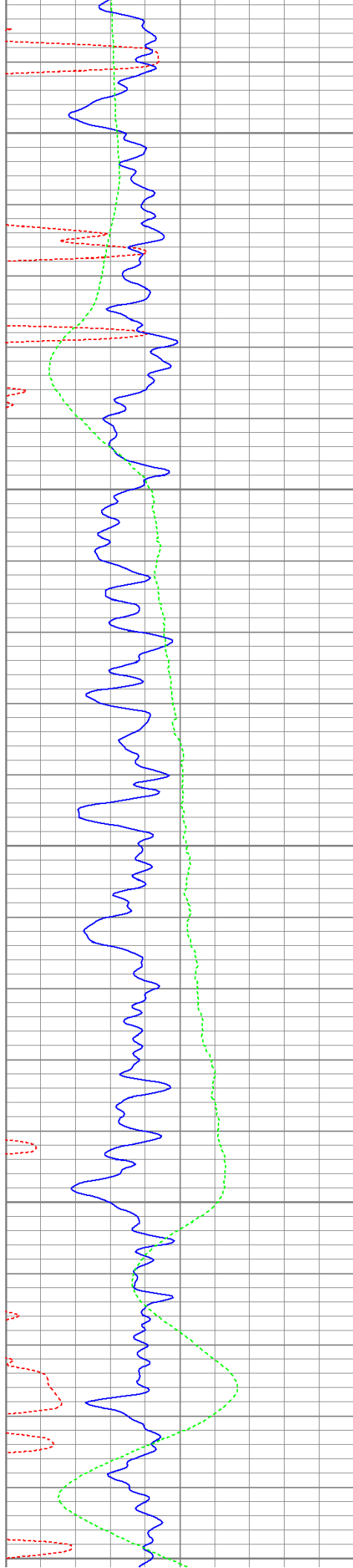
400	Travel Time (usec)	200
0	GR (GAPI)	200
0	DEVI (°)	10

0	Amplitude (mV)	100
9	Collar Locator	-1

200 Variable Density 1200







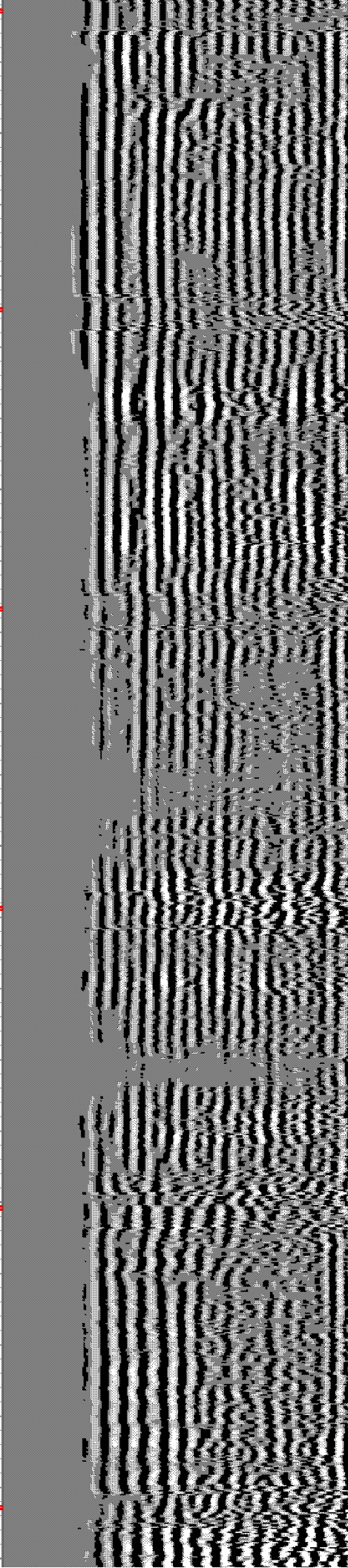
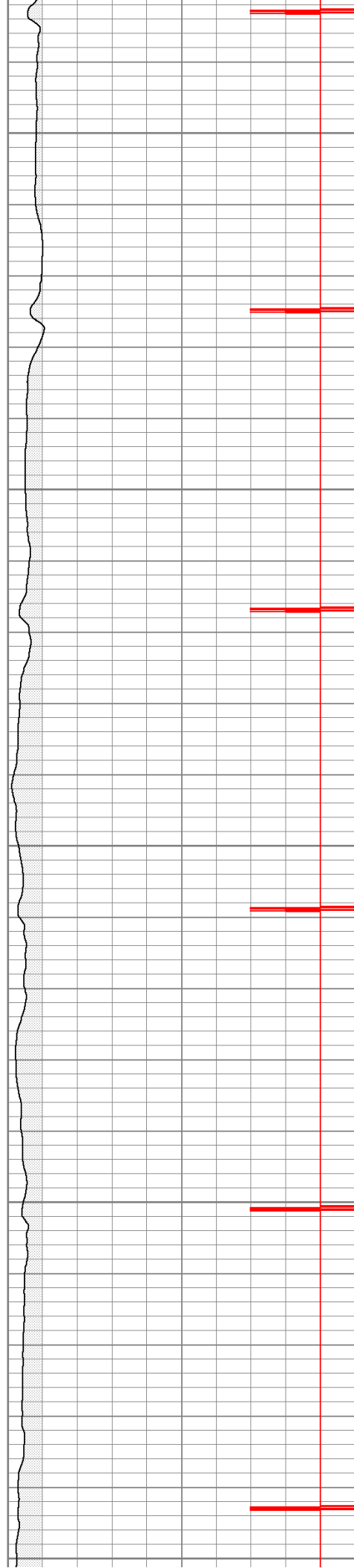
200

250

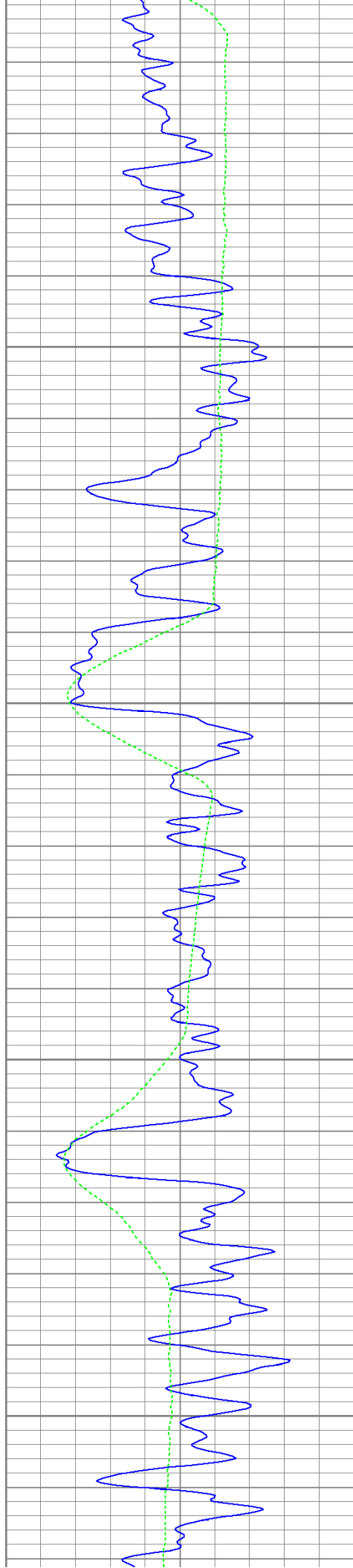
300

350

400





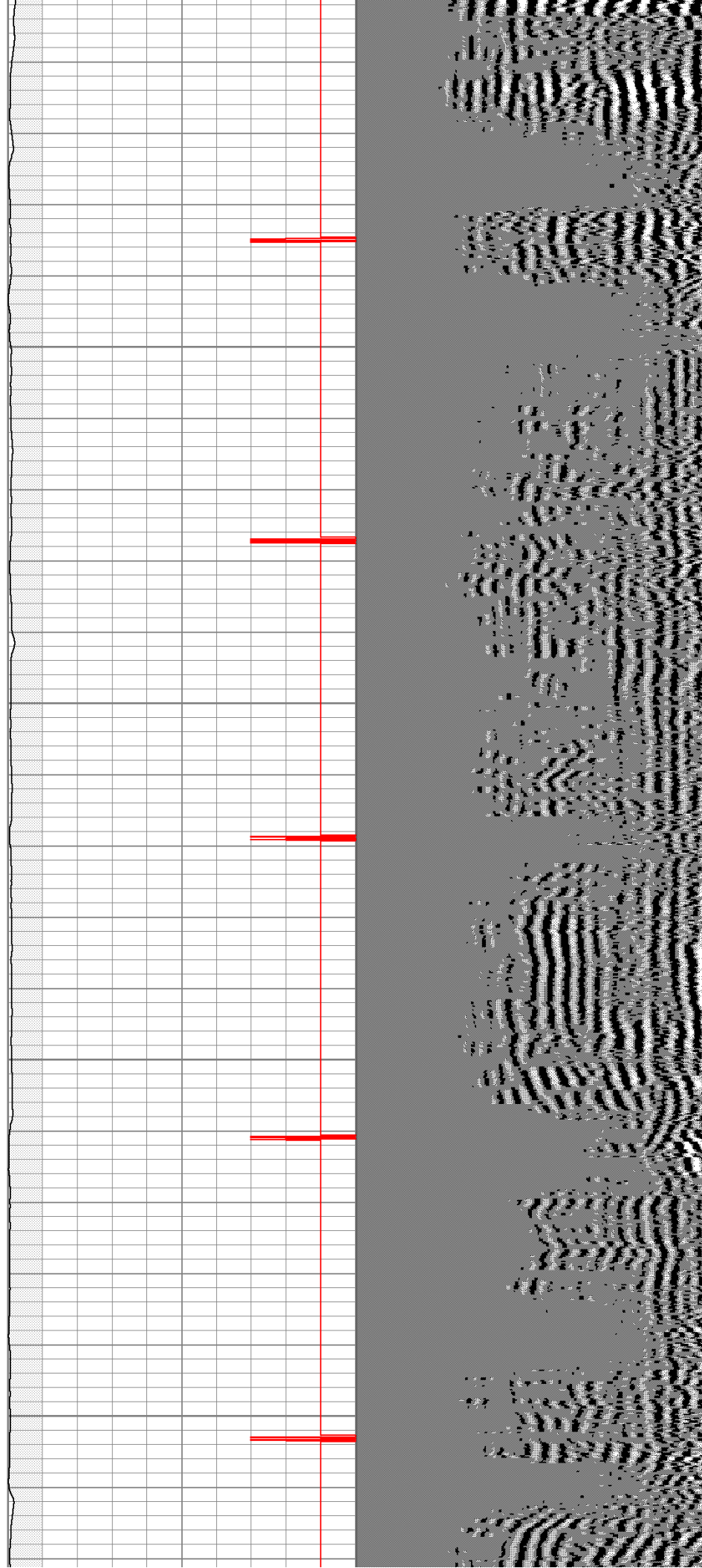


450

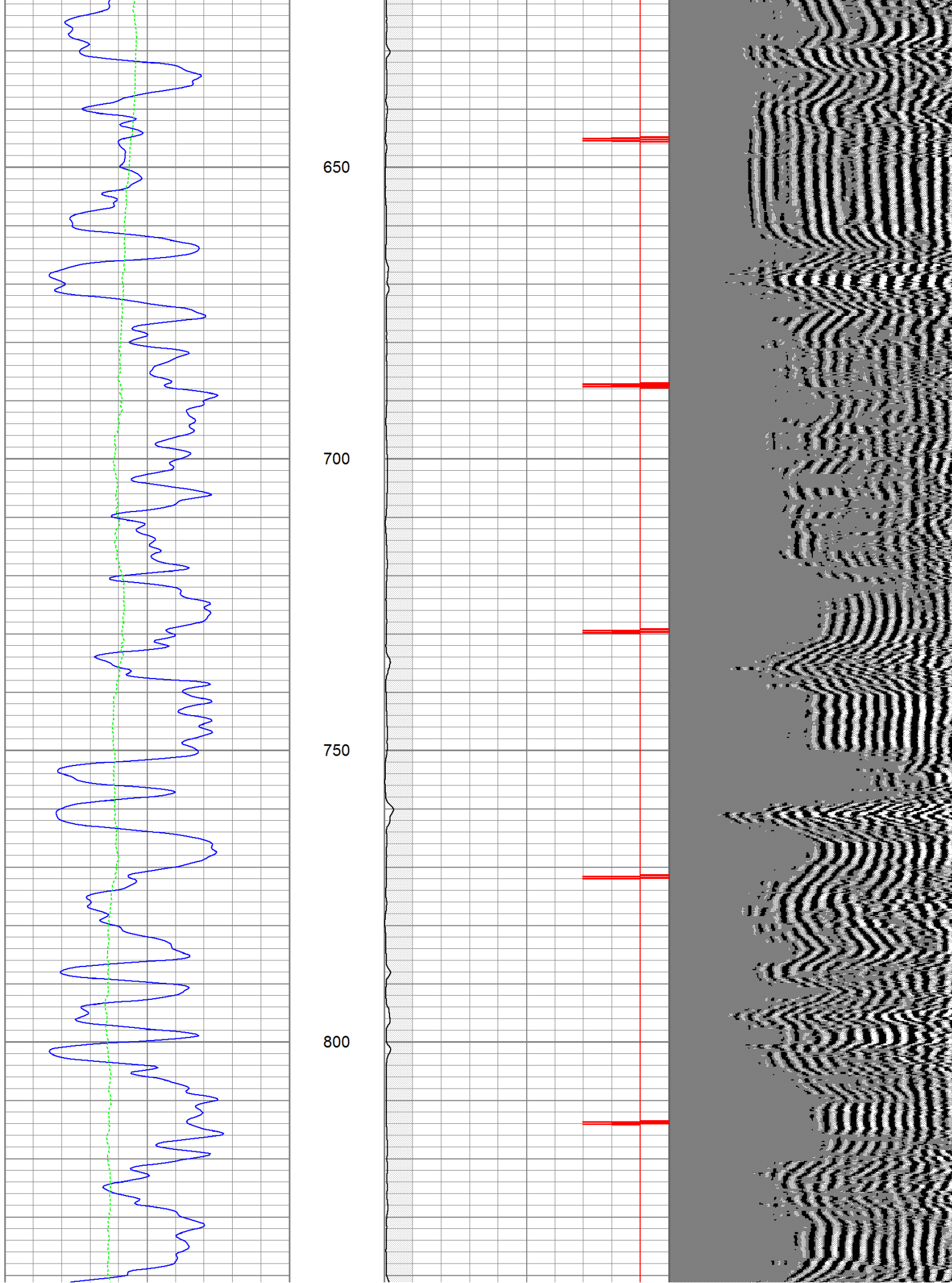
500

550

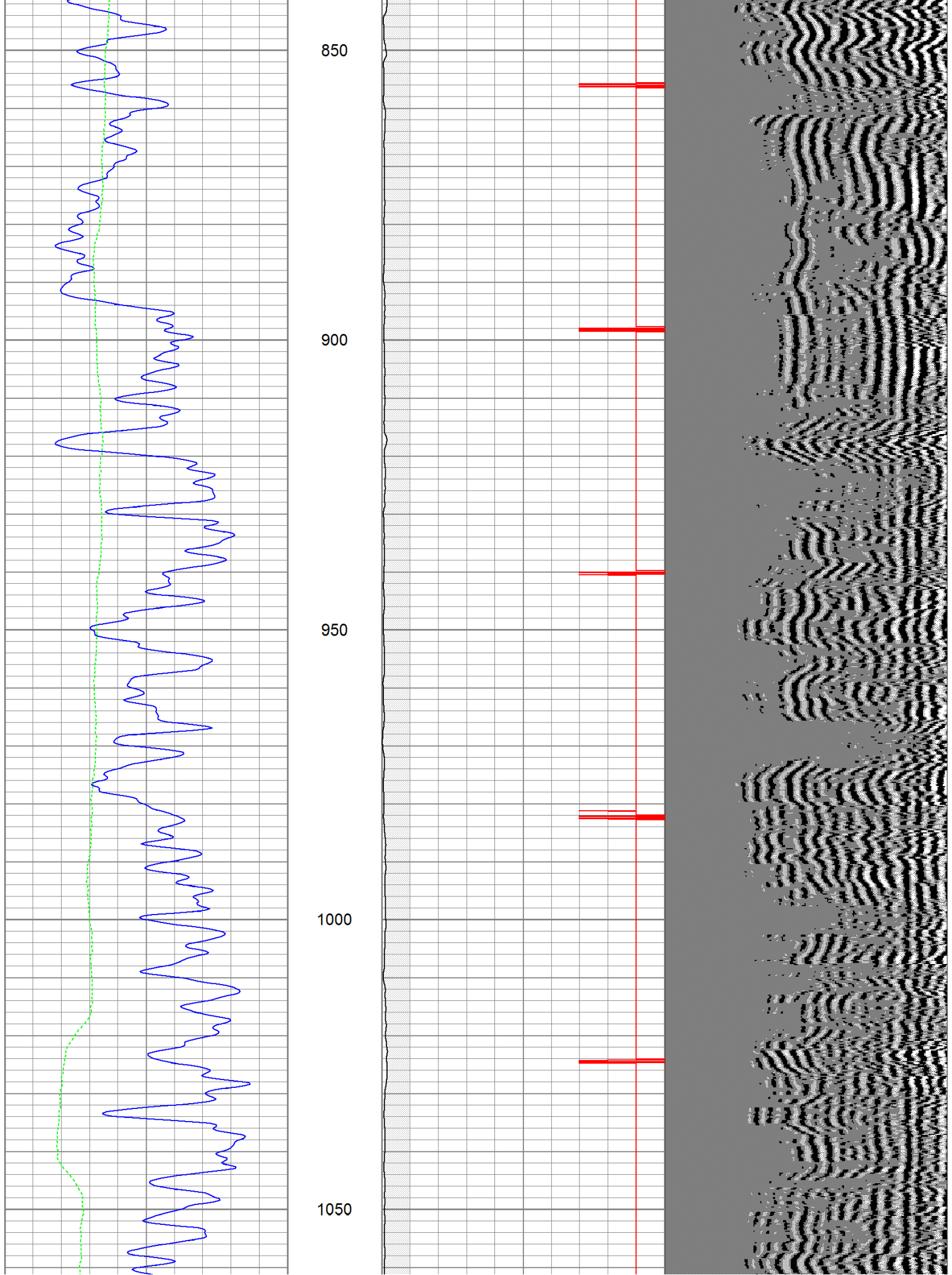
600



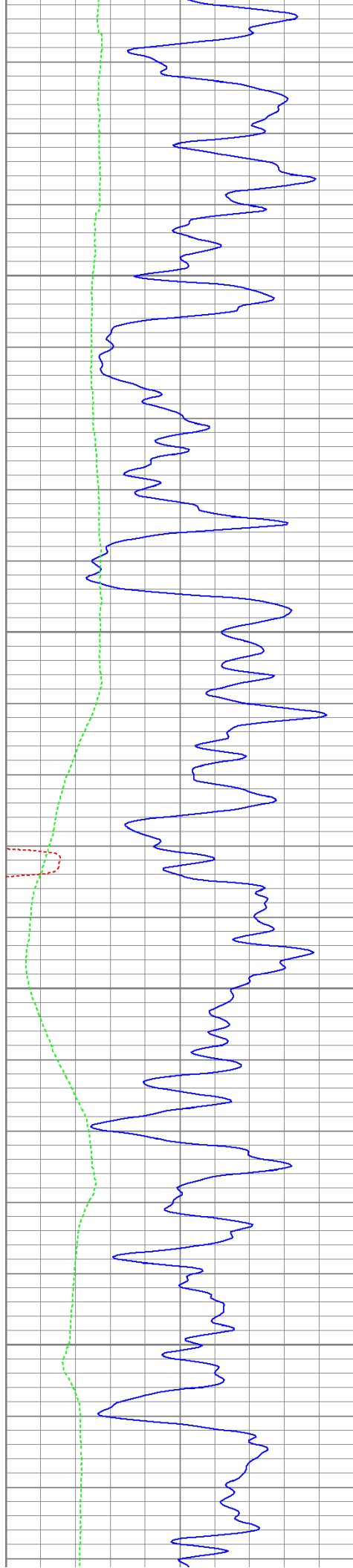










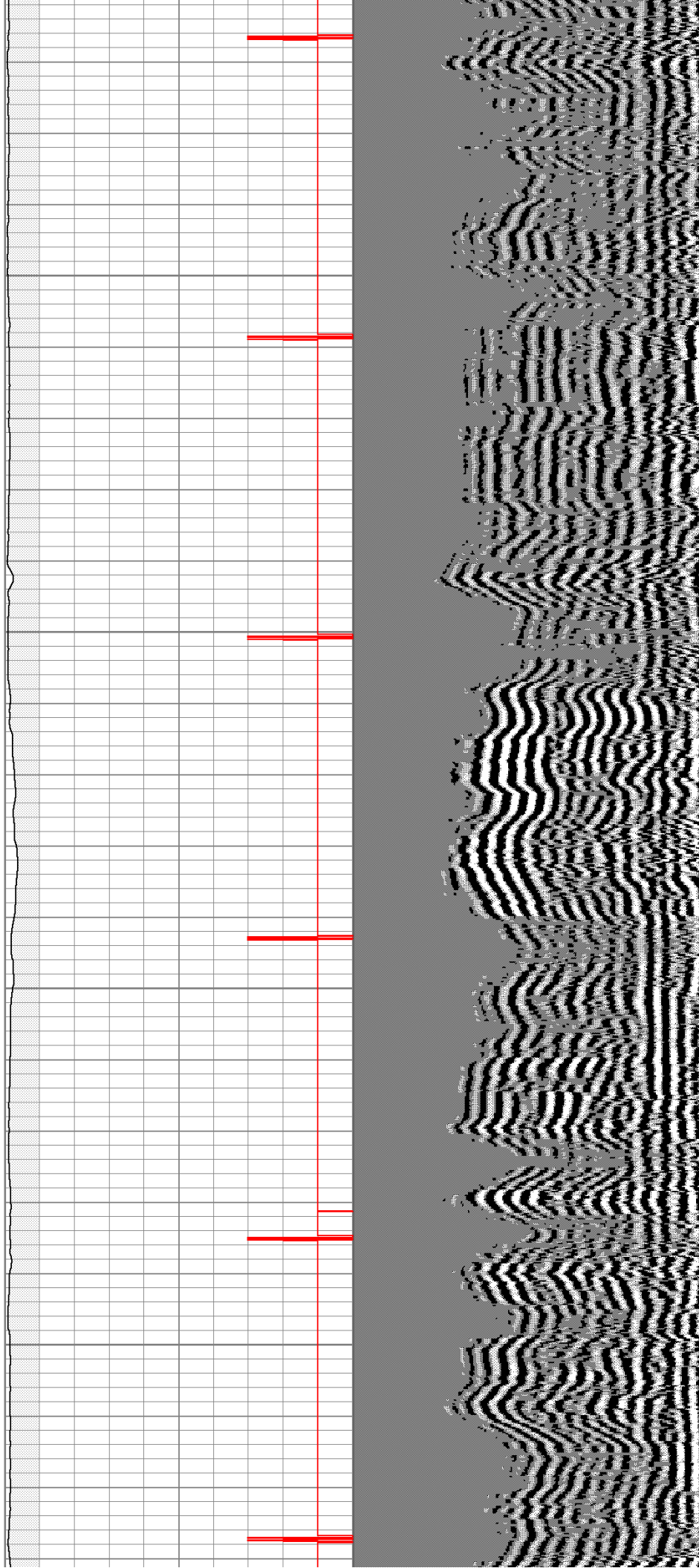


1100

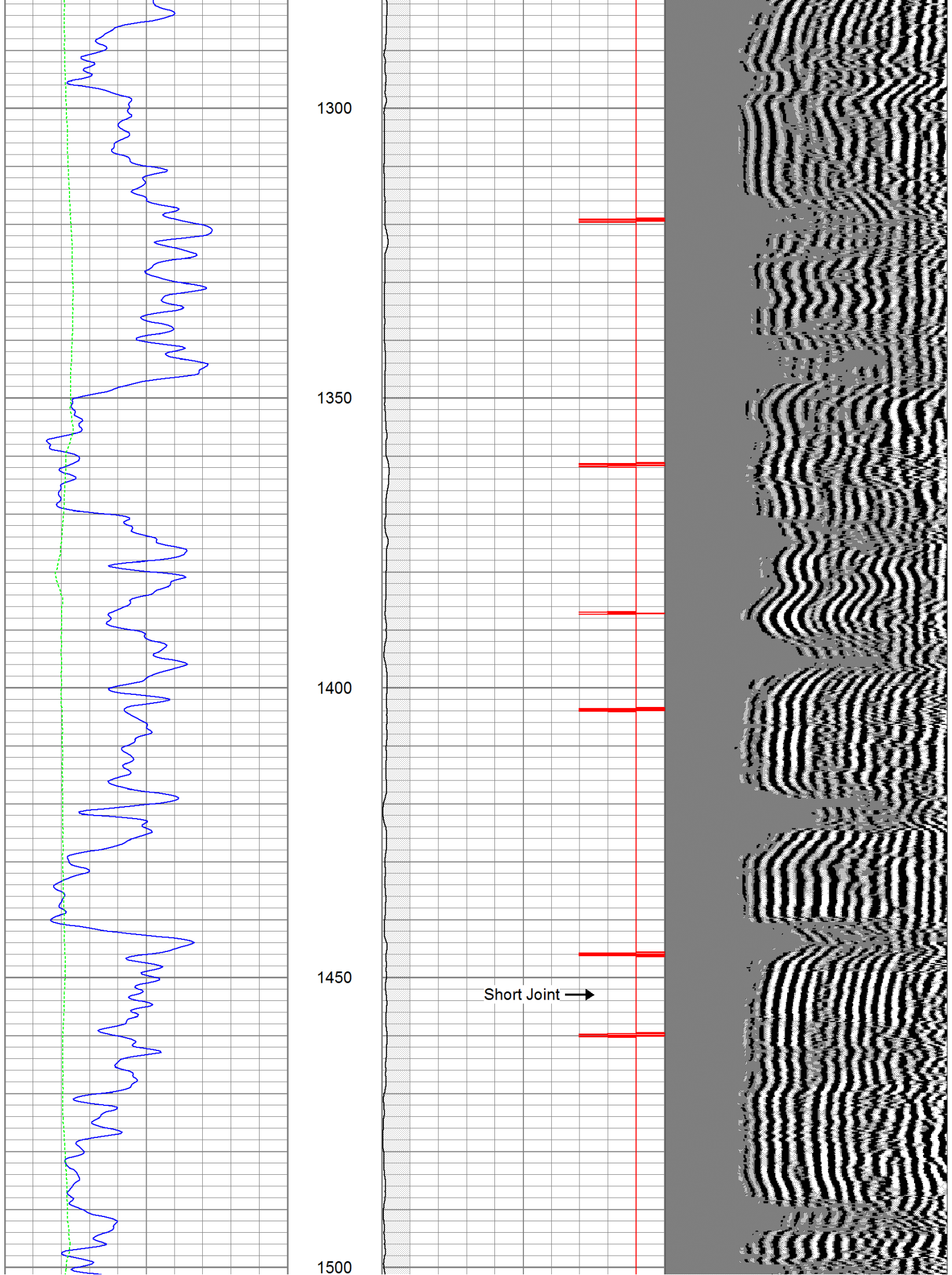
1150

1200

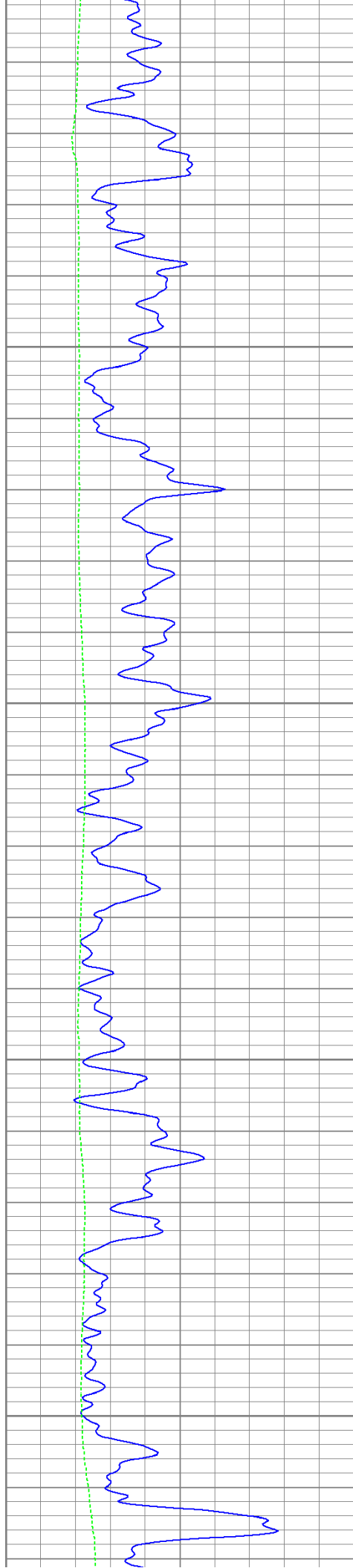
1250









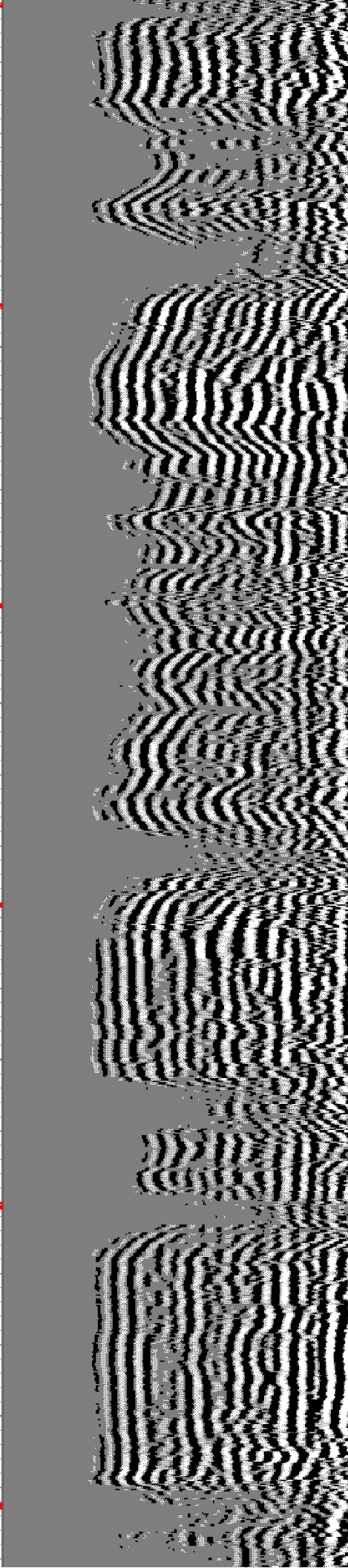
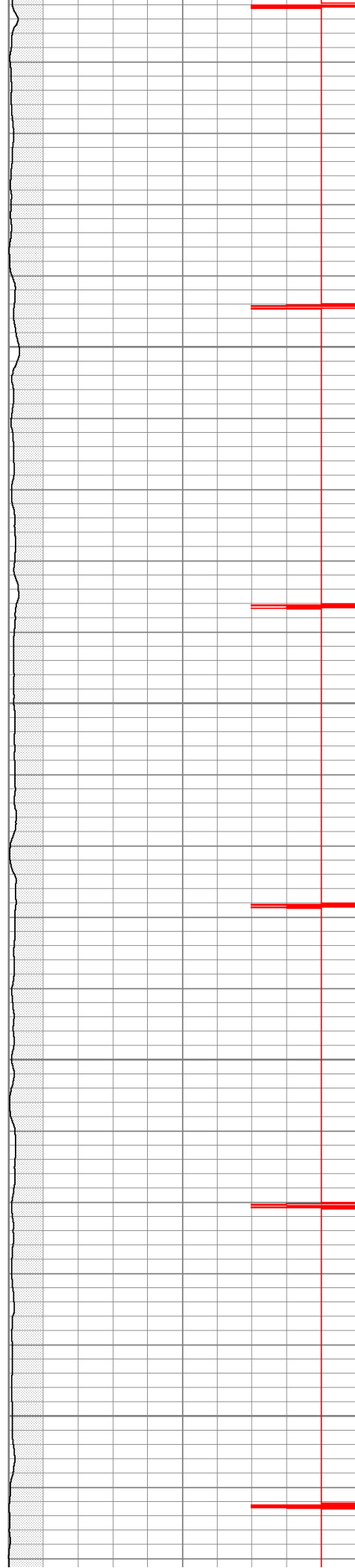


1550

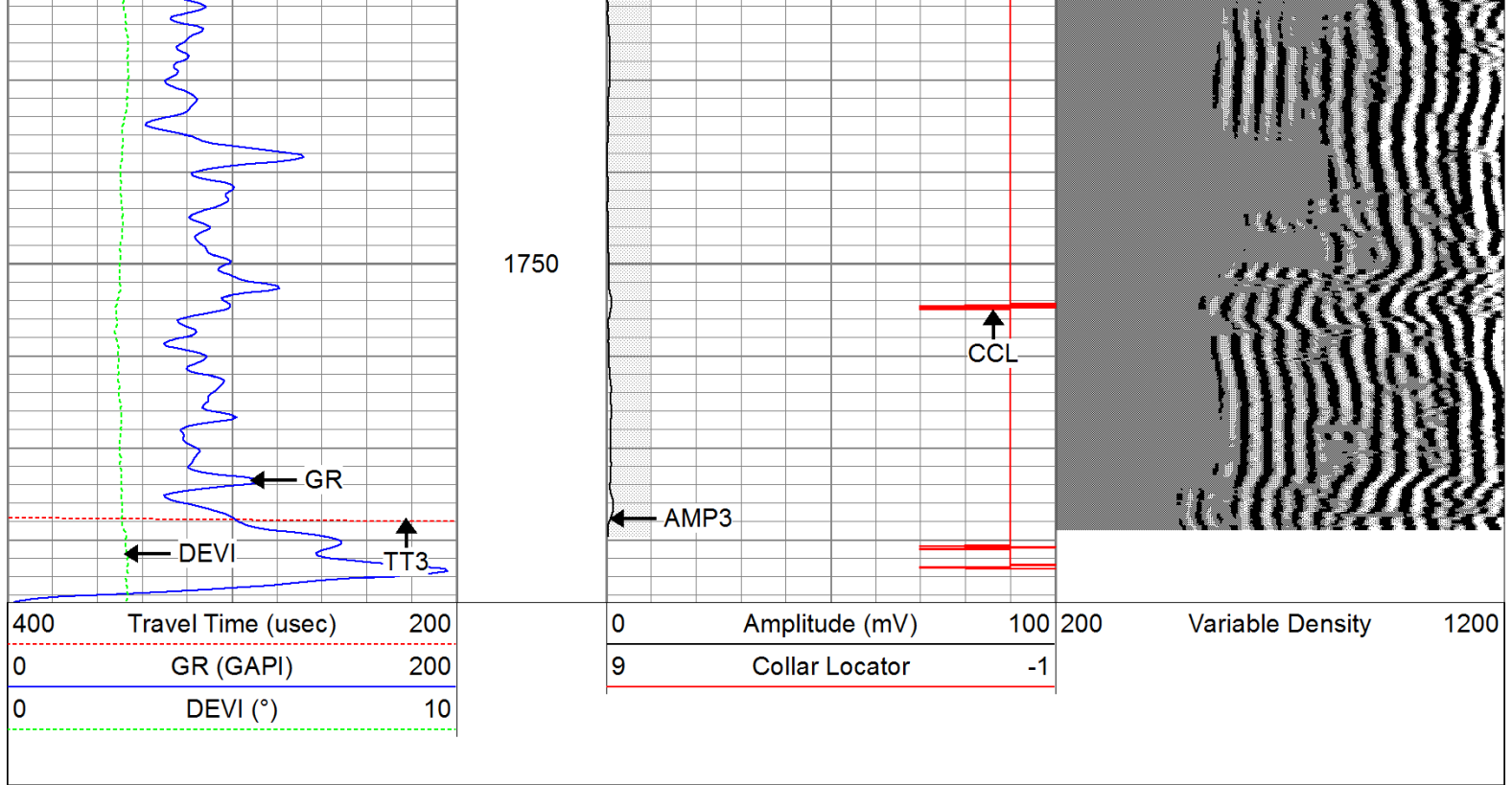
1600

1650

1700

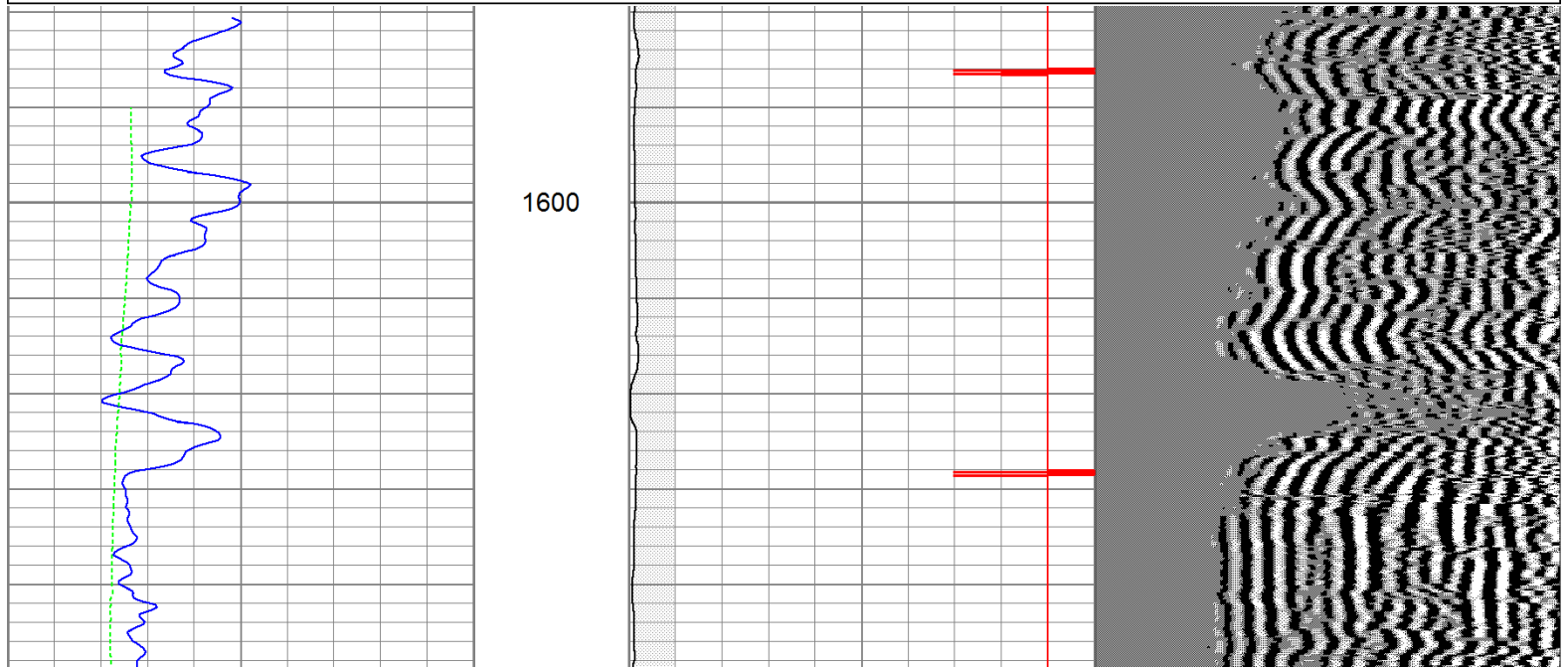
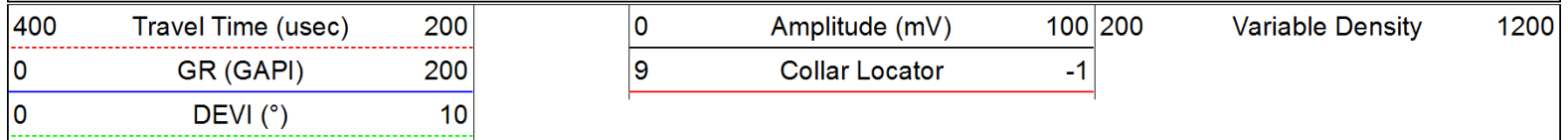




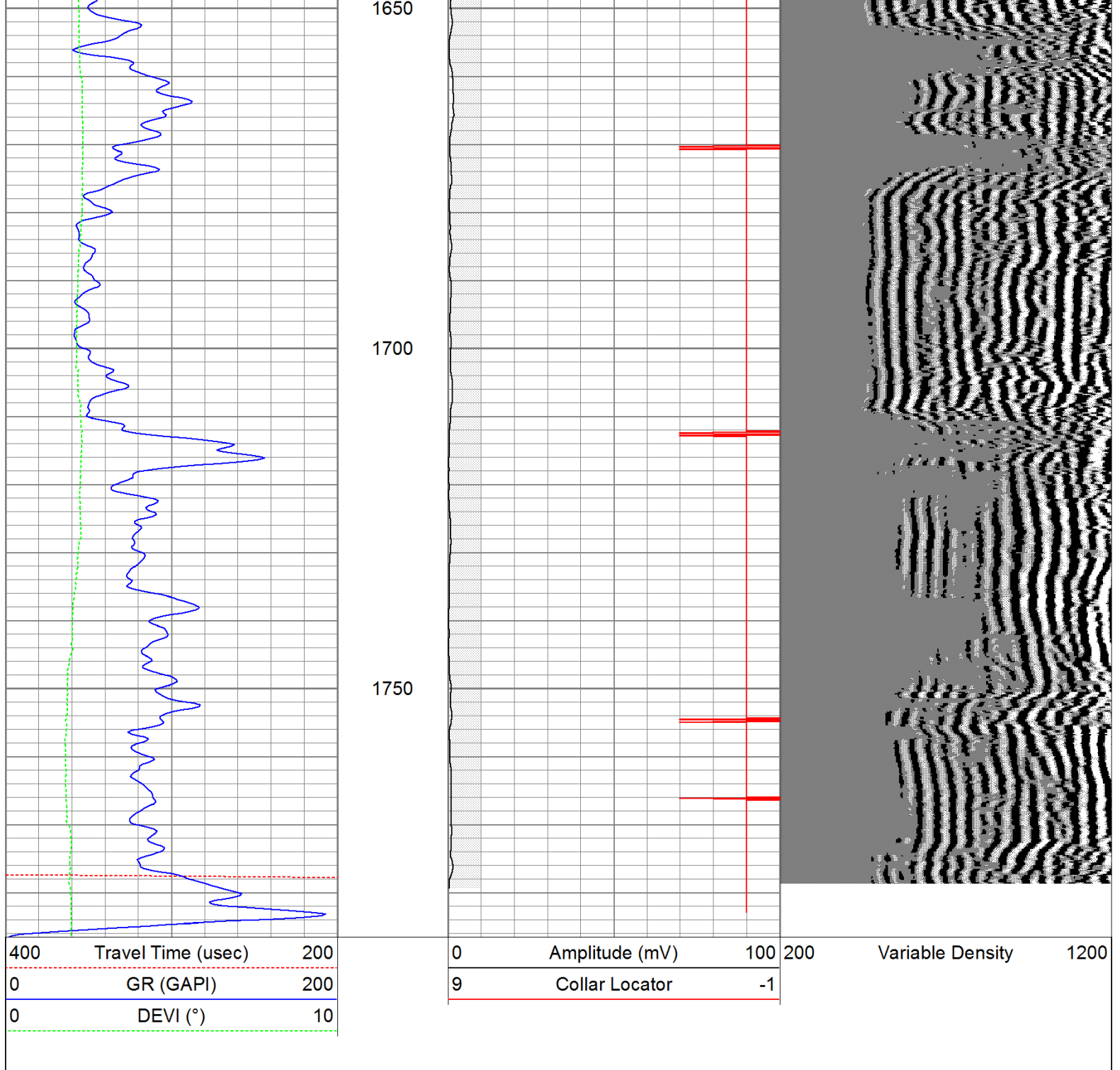


# Repeat Pass

Database File: idrahaje7611b.db  
 Dataset Pathname: pass1.1  
 Presentation Format: cbldig  
 Dataset Creation: Wed Jul 06 14:53:34 2011 by Calc Open-Cased 110302  
 Charted by: Depth in Feet scaled 1:240







### Calibration Report

Database File: idrahaje7611b.db  
Dataset Pathname: pass1  
Dataset Creation: Wed Jul 06 13:47:32 2011 by Log Open-Cased 110302

### Gamma Ray Calibration Report

Serial Number:	080616	
Tool Model:	275D_INC	
Performed:	Wed May 04 17:31:09 2011	
Calibrator Value:	200.0	GAPI
Background Reading:	50.0	cps
Calibrator Reading:	250.0	cps
Sensitivity:	1.0000	GAPI/cps



## Inclinometer Calibration Report

Performed:	Wed May 04 17:39:54 2011
------------	--------------------------

	Low Read.	High Read.	Low Ref.	High Ref.
1				
2				
3				
4				
5				
6				
7				
8				
9				
10				
11				
12				
13				
14				
15				
16				
17				
18				
19				
20				
21				
22				
23				
24				
25				
26				
27				
28				
29				
30				
31				
32				
33				
34				
35				
36				
37				
38				
39				
40				
41				
42				
43				
44				
45				
46				
47				
48				
49				
50				
51				
52				
53				
54				
55				
56				
57				
58				
59				
60				
61				
62				
63				
64				
65				
66				
67				
68				
69				
70				
71				
72				
73				
74				
75				
76				
77				
78				
79				
80				
81				
82				
83				
84				
85				
86				
87				
88				
89				
90				
91				
92				
93				
94				
95				
96				
97				
98				
99				
100				

X Accelerometer	-3585.20	3595.40	-1.00	1.00	gee
-----------------	----------	---------	-------	------	-----

Y Accelerometer	-3619.40	3520.00	-1.00	1.00	gee
-----------------	----------	---------	-------	------	-----

Z Accelerometer
-----------------

# Cement Bond Log Calibration Report

Serial Number:	081024
Tool Model:	PROBEDIGITALCBL
Performed:	Mon Jun 27 16:39:48 2011

Depth:	140.471	ft
Casing Diameter:	5.5	in

	3' Spacing	5' Spacing
1	1	1
2	1	1
3	1	1
4	1	1
5	1	1
6	1	1
7	1	1
8	1	1
9	1	1
10	1	1
11	1	1
12	1	1
13	1	1
14	1	1
15	1	1
16	1	1
17	1	1
18	1	1
19	1	1
20	1	1
21	1	1
22	1	1
23	1	1
24	1	1
25	1	1
26	1	1
27	1	1
28	1	1
29	1	1
30	1	1
31	1	1
32	1	1
33	1	1
34	1	1
35	1	1
36	1	1
37	1	1
38	1	1
39	1	1
40	1	1
41	1	1
42	1	1
43	1	1
44	1	1
45	1	1
46	1	1
47	1	1
48	1	1
49	1	1
50	1	1
51	1	1
52	1	1
53	1	1
54	1	1
55	1	1
56	1	1
57	1	1
58	1	1
59	1	1
60	1	1
61	1	1
62	1	1
63	1	1
64	1	1
65	1	1
66	1	1
67	1	1
68	1	1
69	1	1
70	1	1
71	1	1
72	1	1
73	1	1
74	1	1
75	1	1
76	1	1
77	1	1
78	1	1
79	1	1
80	1	1
81	1	1
82	1	1
83	1	1
84	1	1
85	1	1
86	1	1
87	1	1
88	1	1
89	1	1
90	1	1
91	1	1
92	1	1
93	1	1
94	1	1
95	1	1
96	1	1
97	1	1
98	1	1
99	1	1
100	1	1

Signal Zero:	0	0	mV
Calibrated Amplitude:	85	85	mV
Reading at Signal Zero:	-0.0095459	-0.00961914	V
Reading in Free Pipe:	1.91331	1.71543	V

Gain:	44.2052	49.274
Offset:	0.421978	0.473973

[illegible]