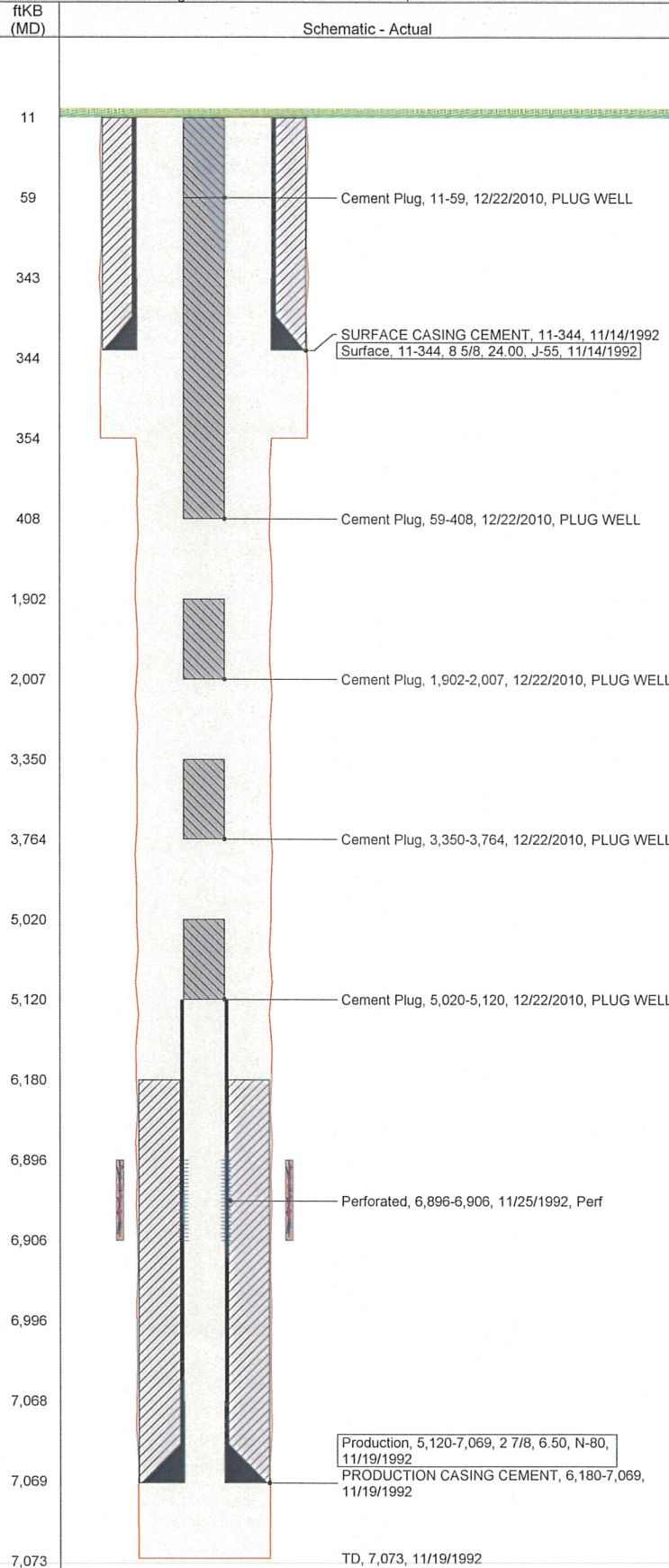


**Well Name: SINJIN E36-14**

Well Config: VERTICAL - ORIGINAL HOLE, 8/15/2011 8:56:12 AM



## Well Header

API		Business Unit		Spud Date		Well Configuration Type	
05-123-16307		WATTENBERG		11/13/1992		VERTICAL	
Orig KB Elev (ft)	KB - GL / ...	Quarter Quarter	Sec/Abs	Twn/Sur...	Range	P & A Date	
4,647.00	9	SESW	36	6N	65W		

## Comment

## Directions To Well

RD 47 - 62, E.5, N.1, W INTO.

## Current PBD (ftKB)

ORIGINAL HOLE - 6996.0

## Bottom Hole Location

North-South Distance (ft)	From N or S Line	East-West Distance (ft)	From E or W Line
---------------------------	------------------	-------------------------	------------------

## PBTDs

Date	Depth (ftKB)	Method	Comment
11/19/1992	6,996.0	TAG	

## Wellbore Sections

Section	Size (in)	Act Top (ftKB)	Act Btm (ftKB)
SURFACE	12 1/4	11.0	354.0
PRODUCTION	7 7/8	354.0	7,073.0

## Zone Statuses

Zone	Status Date	Status	Job
CODELL	1/11/1993	Flowing	DRILLING/COMPLETION - ORIGI...
CODELL	8/21/2007	SI	ABANDON WELL, 12/20/2010 06:00

## Casing Strings

Casing Description	Run Date	String OD (in)	String Wt (lbs/ft)	String Grade	Top (ftKB)	Set Depth (ftKB)
Surface	11/14/1992	8 5/8	24.00	J-55	11.0	344.0
Production	11/19/1992	2 7/8	6.50	N-80	11.0	7,069.0

## Cement

Description	Top (ftKB)	Btm (ftKB)
SURFACE CASING CEMENT	11.0	344.0
Cement Plug	11.0	59.0
Cement Plug	59.0	407.9
Cement Plug	1,902.0	2,007.0
Cement Plug	3,350.0	3,764.0
Cement Plug	5,020.0	5,120.0
PRODUCTION CASING CEMENT	6,180.0	7,069.0

## Tubing Components

Item Description	OD (in)	Wt (lbs/ft)	Grade	Jts	Len (ft)
------------------	---------	-------------	-------	-----	----------

## Perforation Data

Zone	Bnch/Stg	Entered Shot Total	Top (ftKB)	Btm (ftKB)	Date
CODELL, ORIGINA...		40	6,896.0	6,906.0	11/25/1992

## Stimulations & Treatments

Bnch/...	Date	Zone	Primary Job Type
	12/2/1992	CODELL, ORIGINAL HOLE	DRILLING/COMPLETION - ORIGINAL

## Comment

Total Add Amount	V (pumped) (gal)	V (slurry) (gal)	V (gas) (mcf)
Proppant 179040 lb		55356	
Avg Treat Pressure (psi)	Max Treat Pressure (psi)	Avg Treat Rate (bbl/min)	Max Treat Rate (bbl/min)
5,025.0	5,400.0	17.00	17.00

## Other In Hole

Run Date	Description	OD (in)	Top (ftKB)	Btm (ftKB)
----------	-------------	---------	------------	------------

## Logs

Date	Type	Top (ftKB)	Btm (ftKB)
11/18/1992	COMPENSATED DENSITY	3,450.0	7,032.0
11/18/1992	INDUCTION	3,450.0	4,475.0
11/25/1992	CEMENT BOND	6,080.0	6,991.0