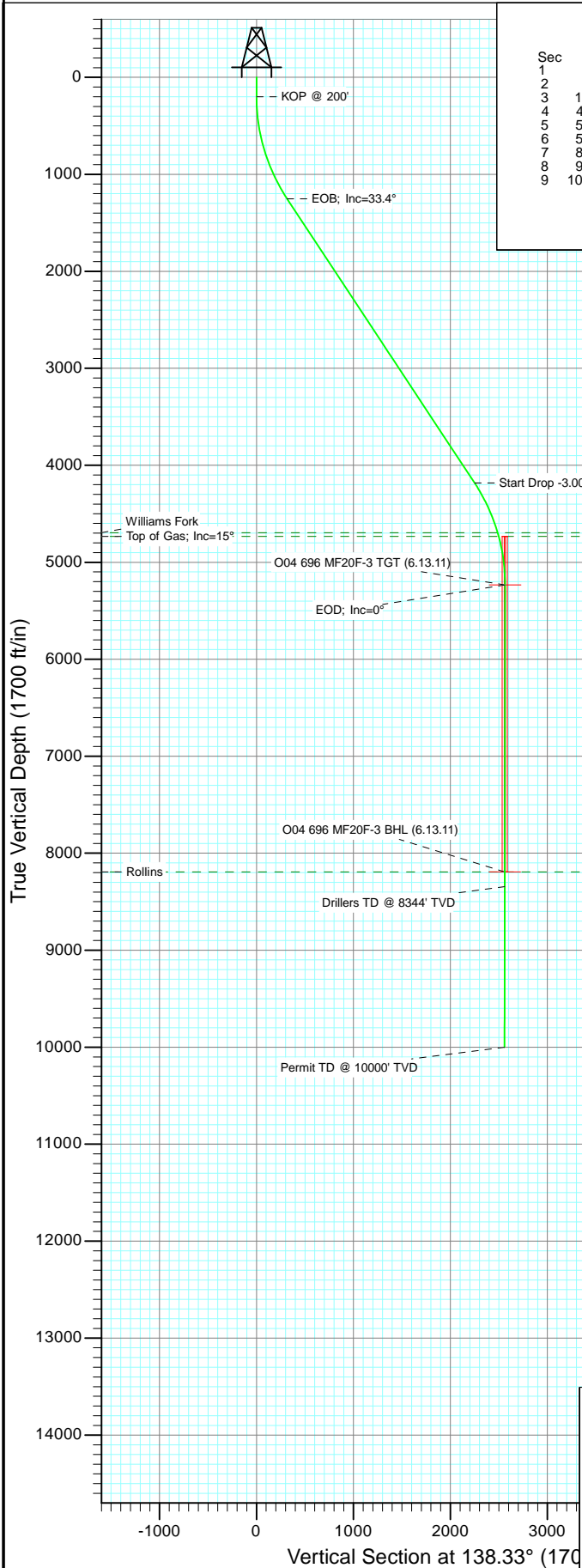
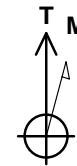
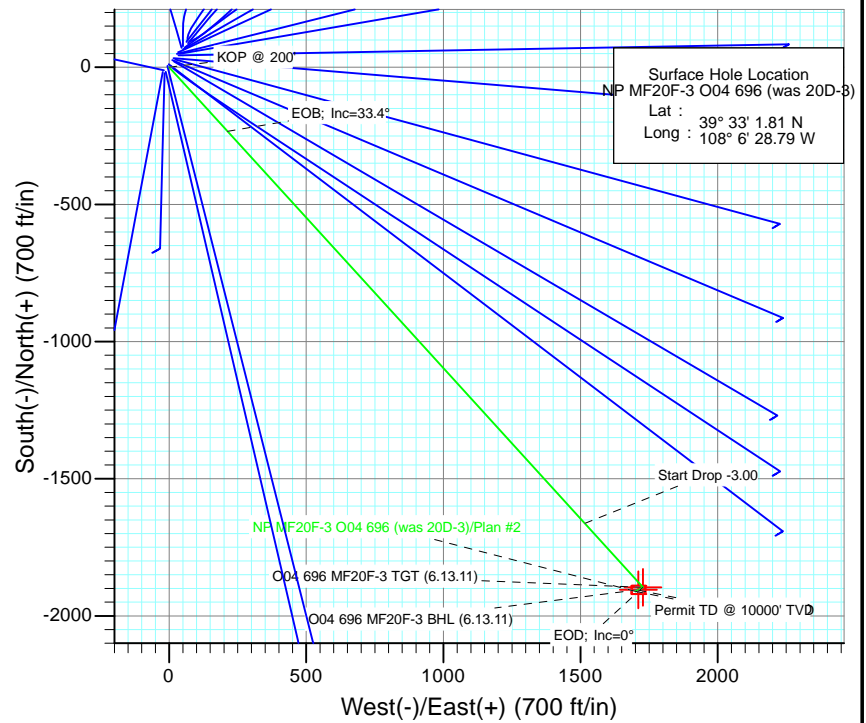




Project: North Piceance
Site: O04 696 (3rd)
Well: NP MF20F-3 O04 696 (was 20D-3)
Wellbore: DD
Design: Plan #2



SECTION DETAILS										
Sec	MD	Inc	Azi	TVD	+N/-S	+E/-W	Dleg	TFace	VSec	Target
1	0.0	0.00	0.00	0.0	0.0	0.0	0.00	0.00	0.0	
2	200.0	0.00	0.00	200.0	0.0	0.0	0.00	0.00	0.0	
3	1314.0	33.42	137.66	1251.9	-233.4	212.7	3.00	137.66	315.7	
4	4824.7	33.42	137.66	4182.1	-1662.5	1515.1	0.00	0.00	2249.2	
5	5938.6	0.00	0.00	5234.0	-1895.9	1727.8	3.00	180.00	2564.9	O04 696 MF20F-3 TGT (6.13.11)
6	5976.3	0.38	241.46	5271.7	-1896.0	1727.7	1.00	241.46	2564.9	
7	8898.7	0.38	241.46	8194.0	-1905.1	1710.8	0.00	0.00	2560.5	O04 696 MF20F-3 BHL (6.13.11)
8	9048.7	0.38	241.46	8344.0	-1905.6	1710.0	0.00	0.00	2560.3	
9	10704.7	0.38	241.46	10000.0	-1910.8	1700.4	0.00	0.00	2557.8	



Azimuths to True North
Magnetic North: 10.69°

Magnetic Field
Strength: 52525.7nT
Dip Angle: 65.84°
Date: 2/11/2009
Model: IGRF200510

FORMATION TOP DETAILS

TVDPath	MDPath	Formation
4694.0	5391.2	Williams Fork
4734.0	5432.8	Top of Gas; Inc=15°
8194.0	8898.7	Rollins

Plan #2 NP MF20F-3 O04 696 (was 20D-3) 95xxx; LR WELL @ 6044.0ft (Original Well Elev) North American Datum 1983 Well NP MF20F-3 O04 696 (was 20D-3), True North							
Type TD	Target No Target (Freehand)	Azimuth 138.33	Origin Type Slot	N/S 0.0	E/W 0.0	From TVD 0.0	
Name	TVD	+N/-S	+E/-W	Latitude	Longitude		
O04 696 MF20F-3 TGT (6.13.11)	5234.0	-1895.9	1727.8	39° 32' 43.07 N	108° 6' 6.73 W		
O04 696 MF20F-3 BHL (6.13.11)	8194.0	-1905.1	1710.8	39° 32' 42.98 N	108° 6' 6.95 W		

Planning Report

Database:	USA EDM 5000 US Multi Users DB	Local Co-ordinate Reference:	Well NP MF20F-3 O04 696 (was 20D-3)
Company:	EnCana Oil & Gas (USA) Inc	TVD Reference:	WELL @ 6044.0ft (Original Well Elev)
Project:	North Piceance	MD Reference:	WELL @ 6044.0ft (Original Well Elev)
Site:	O04 696 (3rd)	North Reference:	True
Well:	NP MF20F-3 O04 696 (was 20D-3)	Survey Calculation Method:	Minimum Curvature
Wellbore:	DD		
Design:	Plan #2		

Project	North Piceance		
Map System:	US State Plane 1983	System Datum:	Mean Sea Level
Geo Datum:	North American Datum 1983		
Map Zone:	Colorado Central Zone		

Site	O04 696 (3rd)			
Site Position:		Northing:	1,635,941.08 ft	Latitude: 39° 33' 1.64 N
From:	Lat/Long	Easting:	2,264,673.43 ft	Longitude: 108° 6' 29.09 W
Position Uncertainty:	0.0 ft	Slot Radius:	13.200 in	Grid Convergence: -1.64 °

Well	NP MF20F-3 O04 696 (was 20D-3)			
Well Position	+N/-S	0.0 ft	Northing:	1,635,957.58 ft
	+E/-W	0.0 ft	Easting:	2,264,697.41 ft
Position Uncertainty		0.0 ft	Wellhead Elevation:	ft
			Ground Level:	6,022.0 ft

Wellbore	DD				
Magnetics	Model Name	Sample Date	Declination (°)	Dip Angle (°)	Field Strength (nT)
	IGRF200510	2/11/2009	10.69	65.84	52,526

Design	Plan #2			
Audit Notes:				
Version:	Phase:	PLAN	Tie On Depth:	0.0
Vertical Section:	Depth From (TVD) (ft)	+N/-S (ft)	+E/-W (ft)	Direction (°)
	0.0	0.0	0.0	138.33

Plan Sections										
Measured Depth (ft)	Inclination (°)	Azimuth (°)	Vertical Depth (ft)	+N/-S (ft)	+E/-W (ft)	Dogleg Rate (°/100ft)	Build Rate (°/100ft)	Turn Rate (°/100ft)	TFO (°)	Target
0.0	0.00	0.00	0.0	0.0	0.0	0.00	0.00	0.00	0.00	
200.0	0.00	0.00	200.0	0.0	0.0	0.00	0.00	0.00	0.00	
1,314.0	33.42	137.66	1,251.9	-233.4	212.7	3.00	3.00	0.00	137.66	
4,824.7	33.42	137.66	4,182.1	-1,662.5	1,515.1	0.00	0.00	0.00	0.00	
5,938.6	0.00	0.00	5,234.0	-1,895.9	1,727.8	3.00	-3.00	0.00	180.00	O04 696 MF20F-3 TC
5,976.3	0.38	241.46	5,271.7	-1,896.0	1,727.7	1.00	1.00	-314.84	241.46	
8,898.7	0.38	241.46	8,194.0	-1,905.1	1,710.8	0.00	0.00	0.00	0.00	O04 696 MF20F-3 B+
9,048.7	0.38	241.46	8,344.0	-1,905.6	1,710.0	0.00	0.00	0.00	0.00	
10,704.7	0.38	241.46	10,000.0	-1,910.8	1,700.4	0.00	0.00	0.00	0.00	

Planning Report

Database: USA EDM 5000 US Multi Users DB
Company: EnCana Oil & Gas (USA) Inc
Project: North Piceance
Site: O04 696 (3rd)
Well: NP MF20F-3 O04 696 (was 20D-3)
Wellbore: DD
Design: Plan #2

Local Co-ordinate Reference: Well NP MF20F-3 O04 696 (was 20D-3)
TVD Reference: WELL @ 6044.0ft (Original Well Elev)
MD Reference: WELL @ 6044.0ft (Original Well Elev)
North Reference: True
Survey Calculation Method: Minimum Curvature

Planned Survey

Measured Depth (ft)	Inclination (°)	Azimuth (°)	Vertical Depth (ft)	+N/-S (ft)	+E/-W (ft)	Vertical Section (ft)	Dogleg Rate (°/100ft)	Build Rate (°/100ft)	Comments / Formations
0.0	0.00	0.00	0.0	0.0	0.0	0.0	0.00	0.00	
30.0	0.00	0.00	30.0	0.0	0.0	0.0	0.00	0.00	
60.0	0.00	0.00	60.0	0.0	0.0	0.0	0.00	0.00	
90.0	0.00	0.00	90.0	0.0	0.0	0.0	0.00	0.00	
120.0	0.00	0.00	120.0	0.0	0.0	0.0	0.00	0.00	
150.0	0.00	0.00	150.0	0.0	0.0	0.0	0.00	0.00	
180.0	0.00	0.00	180.0	0.0	0.0	0.0	0.00	0.00	
200.0	0.00	0.00	200.0	0.0	0.0	0.0	0.00	0.00	KOP @ 200'
210.0	0.30	137.66	210.0	0.0	0.0	0.0	3.00	3.00	
240.0	1.20	137.66	240.0	-0.3	0.3	0.4	3.00	3.00	
270.0	2.10	137.66	270.0	-0.9	0.9	1.3	3.00	3.00	
300.0	3.00	137.66	300.0	-1.9	1.8	2.6	3.00	3.00	
330.0	3.90	137.66	329.9	-3.3	3.0	4.4	3.00	3.00	
360.0	4.80	137.66	359.8	-5.0	4.5	6.7	3.00	3.00	
390.0	5.70	137.66	389.7	-7.0	6.4	9.4	3.00	3.00	
420.0	6.60	137.66	419.5	-9.4	8.5	12.7	3.00	3.00	
450.0	7.50	137.66	449.3	-12.1	11.0	16.3	3.00	3.00	
480.0	8.40	137.66	479.0	-15.1	13.8	20.5	3.00	3.00	
510.0	9.30	137.66	508.6	-18.6	16.9	25.1	3.00	3.00	
540.0	10.20	137.66	538.2	-22.3	20.3	30.2	3.00	3.00	
570.0	11.10	137.66	567.7	-26.4	24.1	35.7	3.00	3.00	
600.0	12.00	137.66	597.1	-30.8	28.1	41.7	3.00	3.00	
630.0	12.90	137.66	626.4	-35.6	32.5	48.2	3.00	3.00	
660.0	13.80	137.66	655.6	-40.7	37.1	55.1	3.00	3.00	
690.0	14.70	137.66	684.6	-46.2	42.1	62.5	3.00	3.00	
720.0	15.60	137.66	713.6	-52.0	47.4	70.3	3.00	3.00	
750.0	16.50	137.66	742.4	-58.1	53.0	78.6	3.00	3.00	
780.0	17.40	137.66	771.1	-64.6	58.9	87.4	3.00	3.00	
810.0	18.30	137.66	799.7	-71.4	65.1	96.6	3.00	3.00	
840.0	19.20	137.66	828.1	-78.5	71.6	106.2	3.00	3.00	
870.0	20.10	137.66	856.3	-86.0	78.4	116.3	3.00	3.00	
900.0	21.00	137.66	884.4	-93.8	85.4	126.8	3.00	3.00	
930.0	21.90	137.66	912.4	-101.9	92.8	137.8	3.00	3.00	
960.0	22.80	137.66	940.1	-110.3	100.5	149.2	3.00	3.00	
990.0	23.70	137.66	967.7	-119.1	108.5	161.1	3.00	3.00	
1,020.0	24.60	137.66	995.0	-128.1	116.8	173.3	3.00	3.00	
1,050.0	25.50	137.66	1,022.2	-137.5	125.3	186.0	3.00	3.00	
1,080.0	26.40	137.66	1,049.2	-147.2	134.2	199.2	3.00	3.00	
1,110.0	27.30	137.66	1,076.0	-157.2	143.3	212.7	3.00	3.00	
1,140.0	28.20	137.66	1,102.5	-167.6	152.7	226.7	3.00	3.00	
1,170.0	29.10	137.66	1,128.8	-178.2	162.4	241.1	3.00	3.00	
1,200.0	30.00	137.66	1,154.9	-189.1	172.4	255.9	3.00	3.00	
1,230.0	30.90	137.66	1,180.8	-200.4	182.6	271.1	3.00	3.00	
1,260.0	31.80	137.66	1,206.4	-211.9	193.1	286.7	3.00	3.00	
1,290.0	32.70	137.66	1,231.8	-223.7	203.9	302.7	3.00	3.00	
1,314.0	33.42	137.66	1,251.9	-233.4	212.7	315.7	3.00	3.00	EOB; Inc=33.4°
1,320.0	33.42	137.66	1,256.9	-235.8	214.9	319.1	0.00	0.00	
1,350.0	33.42	137.66	1,281.9	-248.1	226.1	335.6	0.00	0.00	
1,380.0	33.42	137.66	1,307.0	-260.3	237.2	352.1	0.00	0.00	
1,410.0	33.42	137.66	1,332.0	-272.5	248.3	368.6	0.00	0.00	
1,440.0	33.42	137.66	1,357.1	-284.7	259.4	385.2	0.00	0.00	
1,470.0	33.42	137.66	1,382.1	-296.9	270.6	401.7	0.00	0.00	

Planning Report

Database:	USA EDM 5000 US Multi Users DB	Local Co-ordinate Reference:	Well NP MF20F-3 O04 696 (was 20D-3)
Company:	EnCana Oil & Gas (USA) Inc	TVD Reference:	WELL @ 6044.0ft (Original Well Elev)
Project:	North Piceance	MD Reference:	WELL @ 6044.0ft (Original Well Elev)
Site:	O04 696 (3rd)	North Reference:	True
Well:	NP MF20F-3 O04 696 (was 20D-3)	Survey Calculation Method:	Minimum Curvature
Wellbore:	DD		
Design:	Plan #2		

Planned Survey

Measured Depth (ft)	Inclination (°)	Azimuth (°)	Vertical Depth (ft)	+N/-S (ft)	+E/-W (ft)	Vertical Section (ft)	Dogleg Rate (°/100ft)	Build Rate (°/100ft)	Comments / Formations
1,500.0	33.42	137.66	1,407.1	-309.1	281.7	418.2	0.00	0.00	
1,530.0	33.42	137.66	1,432.2	-321.3	292.8	434.7	0.00	0.00	
1,560.0	33.42	137.66	1,457.2	-333.5	304.0	451.2	0.00	0.00	
1,590.0	33.42	137.66	1,482.3	-345.8	315.1	467.8	0.00	0.00	
1,620.0	33.42	137.66	1,507.3	-358.0	326.2	484.3	0.00	0.00	
1,650.0	33.42	137.66	1,532.3	-370.2	337.4	500.8	0.00	0.00	
1,680.0	33.42	137.66	1,557.4	-382.4	348.5	517.3	0.00	0.00	
1,710.0	33.42	137.66	1,582.4	-394.6	359.6	533.8	0.00	0.00	
1,740.0	33.42	137.66	1,607.5	-406.8	370.7	550.4	0.00	0.00	
1,770.0	33.42	137.66	1,632.5	-419.0	381.9	566.9	0.00	0.00	
1,800.0	33.42	137.66	1,657.5	-431.2	393.0	583.4	0.00	0.00	
1,830.0	33.42	137.66	1,682.6	-443.5	404.1	599.9	0.00	0.00	
1,860.0	33.42	137.66	1,707.6	-455.7	415.3	616.5	0.00	0.00	
1,890.0	33.42	137.66	1,732.7	-467.9	426.4	633.0	0.00	0.00	
1,920.0	33.42	137.66	1,757.7	-480.1	437.5	649.5	0.00	0.00	
1,950.0	33.42	137.66	1,782.7	-492.3	448.7	666.0	0.00	0.00	
1,980.0	33.42	137.66	1,807.8	-504.5	459.8	682.5	0.00	0.00	
2,010.0	33.42	137.66	1,832.8	-516.7	470.9	699.1	0.00	0.00	
2,040.0	33.42	137.66	1,857.9	-528.9	482.0	715.6	0.00	0.00	
2,070.0	33.42	137.66	1,882.9	-541.1	493.2	732.1	0.00	0.00	
2,100.0	33.42	137.66	1,907.9	-553.4	504.3	748.6	0.00	0.00	
2,130.0	33.42	137.66	1,933.0	-565.6	515.4	765.2	0.00	0.00	
2,160.0	33.42	137.66	1,958.0	-577.8	526.6	781.7	0.00	0.00	
2,190.0	33.42	137.66	1,983.1	-590.0	537.7	798.2	0.00	0.00	
2,220.0	33.42	137.66	2,008.1	-602.2	548.8	814.7	0.00	0.00	
2,250.0	33.42	137.66	2,033.1	-614.4	559.9	831.2	0.00	0.00	
2,280.0	33.42	137.66	2,058.2	-626.6	571.1	847.8	0.00	0.00	
2,310.0	33.42	137.66	2,083.2	-638.8	582.2	864.3	0.00	0.00	
2,340.0	33.42	137.66	2,108.3	-651.1	593.3	880.8	0.00	0.00	
2,370.0	33.42	137.66	2,133.3	-663.3	604.5	897.3	0.00	0.00	
2,400.0	33.42	137.66	2,158.3	-675.5	615.6	913.8	0.00	0.00	
2,430.0	33.42	137.66	2,183.4	-687.7	626.7	930.4	0.00	0.00	
2,460.0	33.42	137.66	2,208.4	-699.9	637.9	946.9	0.00	0.00	
2,490.0	33.42	137.66	2,233.5	-712.1	649.0	963.4	0.00	0.00	

Targets

Target Name	Dip Angle (°)	Dip Dir. (°)	TVD (ft)	+N/-S (ft)	+E/-W (ft)	Northing (ft)	Easting (ft)	Latitude	Longitude
- hit/miss target									
- Shape									
O04 696 MF20F-3 BHL	0.00	0.00	8,194.0	-1,905.1	1,710.8	1,634,004.13	2,266,352.84	39° 32' 42.98 N	108° 6' 6.95 W
- plan misses target center by 6170.8ft at 2490.0ft MD (2233.5 TVD, -712.1 N, 649.0 E)									
- Rectangle (sides W30.0 H50.0 D0.0)									
O04 696 MF20F-3 TGT	0.00	0.00	5,234.0	-1,895.9	1,727.8	1,634,012.87	2,266,370.08	39° 32' 43.07 N	108° 6' 6.73 W
- plan misses target center by 3401.2ft at 2490.0ft MD (2233.5 TVD, -712.1 N, 649.0 E)									
- Point									

Planning Report

Database: USA EDM 5000 US Multi Users DB
Company: EnCana Oil & Gas (USA) Inc
Project: North Piceance
Site: O04 696 (3rd)
Well: NP MF20F-3 O04 696 (was 20D-3)
Wellbore: DD
Design: Plan #2

Local Co-ordinate Reference: Well NP MF20F-3 O04 696 (was 20D-3)
TVD Reference: WELL @ 6044.0ft (Original Well Elev)
MD Reference: WELL @ 6044.0ft (Original Well Elev)
North Reference: True
Survey Calculation Method: Minimum Curvature

Planned Survey

Measured Depth (ft)	Inclination (°)	Azimuth (°)	Vertical Depth (ft)	+N/-S (ft)	+E/-W (ft)	Vertical Section (ft)	Dogleg Rate (°/100ft)	Build Rate (°/100ft)	Comments / Formations
2,500.0	33.42	137.66	2,241.8	-716.2	652.7	968.9	0.00	0.00	
2,600.0	33.42	137.66	2,325.3	-756.9	689.8	1,024.0	0.00	0.00	
2,700.0	33.42	137.66	2,408.7	-797.6	726.9	1,079.1	0.00	0.00	
2,800.0	33.42	137.66	2,492.2	-838.3	764.0	1,134.1	0.00	0.00	
2,900.0	33.42	137.66	2,575.7	-879.0	801.1	1,189.2	0.00	0.00	
3,000.0	33.42	137.66	2,659.1	-919.7	838.2	1,244.3	0.00	0.00	
3,100.0	33.42	137.66	2,742.6	-960.4	875.3	1,299.4	0.00	0.00	
3,200.0	33.42	137.66	2,826.1	-1,001.1	912.4	1,354.4	0.00	0.00	
3,300.0	33.42	137.66	2,909.5	-1,041.9	949.5	1,409.5	0.00	0.00	
3,400.0	33.42	137.66	2,993.0	-1,082.6	986.6	1,464.6	0.00	0.00	
3,500.0	33.42	137.66	3,076.5	-1,123.3	1,023.7	1,519.6	0.00	0.00	
3,600.0	33.42	137.66	3,159.9	-1,164.0	1,060.8	1,574.7	0.00	0.00	
3,700.0	33.42	137.66	3,243.4	-1,204.7	1,097.9	1,629.8	0.00	0.00	
3,800.0	33.42	137.66	3,326.9	-1,245.4	1,135.0	1,684.9	0.00	0.00	
3,900.0	33.42	137.66	3,410.3	-1,286.1	1,172.1	1,739.9	0.00	0.00	
4,000.0	33.42	137.66	3,493.8	-1,326.8	1,209.2	1,795.0	0.00	0.00	
4,100.0	33.42	137.66	3,577.3	-1,367.5	1,246.3	1,850.1	0.00	0.00	
4,200.0	33.42	137.66	3,660.7	-1,408.2	1,283.4	1,905.1	0.00	0.00	
4,300.0	33.42	137.66	3,744.2	-1,448.9	1,320.5	1,960.2	0.00	0.00	
4,400.0	33.42	137.66	3,827.7	-1,489.6	1,357.6	2,015.3	0.00	0.00	
4,500.0	33.42	137.66	3,911.1	-1,530.3	1,394.7	2,070.4	0.00	0.00	
4,600.0	33.42	137.66	3,994.6	-1,571.1	1,431.8	2,125.4	0.00	0.00	
4,700.0	33.42	137.66	4,078.1	-1,611.8	1,468.9	2,180.5	0.00	0.00	
4,800.0	33.42	137.66	4,161.5	-1,652.5	1,506.0	2,235.6	0.00	0.00	
4,824.7	33.42	137.66	4,182.1	-1,662.5	1,515.1	2,249.2	0.00	0.00	Start Drop -3.00
4,900.0	31.16	137.66	4,245.8	-1,692.2	1,542.2	2,289.4	3.00	-3.00	
5,000.0	28.16	137.66	4,332.7	-1,728.8	1,575.5	2,338.9	3.00	-3.00	
5,100.0	25.16	137.66	4,422.0	-1,762.0	1,605.8	2,383.7	3.00	-3.00	
5,200.0	22.16	137.66	4,513.6	-1,791.6	1,632.8	2,423.9	3.00	-3.00	
5,300.0	19.16	137.66	4,607.2	-1,817.7	1,656.5	2,459.1	3.00	-3.00	
5,391.2	16.42	137.66	4,694.0	-1,838.3	1,675.3	2,487.0	3.00	-3.00	Williams Fork
5,400.0	16.16	137.66	4,702.5	-1,840.1	1,677.0	2,489.5	3.00	-3.00	
5,432.8	15.18	137.66	4,734.0	-1,846.7	1,682.9	2,498.3	3.00	-3.00	Top of Gas; Inc=15°
5,500.0	13.16	137.66	4,799.2	-1,858.8	1,694.0	2,514.8	3.00	-3.00	
5,600.0	10.16	137.66	4,897.1	-1,873.8	1,707.6	2,535.0	3.00	-3.00	
5,700.0	7.16	137.66	4,996.0	-1,884.9	1,717.8	2,550.0	3.00	-3.00	
5,800.0	4.16	137.66	5,095.5	-1,892.2	1,724.4	2,559.9	3.00	-3.00	
5,900.0	1.16	137.66	5,195.4	-1,895.6	1,727.5	2,564.5	3.00	-3.00	
5,938.6	0.00	0.00	5,234.0	-1,895.9	1,727.8	2,564.9	3.00	-3.00	EOD; Inc=0° - O04 696 MF20F-3 TGT (6.13.11)
5,976.3	0.38	241.46	5,271.7	-1,896.0	1,727.7	2,564.9	1.00	1.00	
6,000.0	0.38	241.46	5,295.4	-1,896.0	1,727.6	2,564.9	0.00	0.00	
6,100.0	0.38	241.46	5,395.4	-1,896.3	1,727.0	2,564.7	0.00	0.00	
6,200.0	0.38	241.46	5,495.3	-1,896.7	1,726.4	2,564.6	0.00	0.00	
6,300.0	0.38	241.46	5,595.3	-1,897.0	1,725.8	2,564.4	0.00	0.00	
6,400.0	0.38	241.46	5,695.3	-1,897.3	1,725.2	2,564.3	0.00	0.00	
6,500.0	0.38	241.46	5,795.3	-1,897.6	1,724.7	2,564.1	0.00	0.00	
6,600.0	0.38	241.46	5,895.3	-1,897.9	1,724.1	2,564.0	0.00	0.00	
6,700.0	0.38	241.46	5,995.3	-1,898.2	1,723.5	2,563.8	0.00	0.00	
6,800.0	0.38	241.46	6,095.3	-1,898.5	1,722.9	2,563.7	0.00	0.00	
6,900.0	0.38	241.46	6,195.3	-1,898.9	1,722.4	2,563.5	0.00	0.00	
7,000.0	0.38	241.46	6,295.3	-1,899.2	1,721.8	2,563.4	0.00	0.00	
7,100.0	0.38	241.46	6,395.3	-1,899.5	1,721.2	2,563.2	0.00	0.00	

Planning Report

Database:	USA EDM 5000 US Multi Users DB	Local Co-ordinate Reference:	Well NP MF20F-3 O04 696 (was 20D-3)
Company:	EnCana Oil & Gas (USA) Inc	TVD Reference:	WELL @ 6044.0ft (Original Well Elev)
Project:	North Piceance	MD Reference:	WELL @ 6044.0ft (Original Well Elev)
Site:	O04 696 (3rd)	North Reference:	True
Well:	NP MF20F-3 O04 696 (was 20D-3)	Survey Calculation Method:	Minimum Curvature
Wellbore:	DD		
Design:	Plan #2		

Planned Survey									
Measured Depth (ft)	Inclination (°)	Azimuth (°)	Vertical Depth (ft)	+N/-S (ft)	+E/-W (ft)	Vertical Section (ft)	Dogleg Rate (°/100ft)	Build Rate (°/100ft)	Comments / Formations
7,200.0	0.38	241.46	6,495.3	-1,899.8	1,720.6	2,563.1	0.00	0.00	
7,300.0	0.38	241.46	6,595.3	-1,900.1	1,720.0	2,562.9	0.00	0.00	
7,400.0	0.38	241.46	6,695.3	-1,900.4	1,719.5	2,562.8	0.00	0.00	
7,500.0	0.38	241.46	6,795.3	-1,900.7	1,718.9	2,562.6	0.00	0.00	
7,600.0	0.38	241.46	6,895.3	-1,901.1	1,718.3	2,562.5	0.00	0.00	
7,700.0	0.38	241.46	6,995.3	-1,901.4	1,717.7	2,562.3	0.00	0.00	
7,800.0	0.38	241.46	7,095.3	-1,901.7	1,717.2	2,562.2	0.00	0.00	
7,900.0	0.38	241.46	7,195.3	-1,902.0	1,716.6	2,562.0	0.00	0.00	
8,000.0	0.38	241.46	7,295.3	-1,902.3	1,716.0	2,561.9	0.00	0.00	
8,100.0	0.38	241.46	7,395.3	-1,902.6	1,715.4	2,561.7	0.00	0.00	
8,200.0	0.38	241.46	7,495.3	-1,902.9	1,714.9	2,561.6	0.00	0.00	
8,300.0	0.38	241.46	7,595.3	-1,903.3	1,714.3	2,561.4	0.00	0.00	
8,400.0	0.38	241.46	7,695.3	-1,903.6	1,713.7	2,561.3	0.00	0.00	
8,500.0	0.38	241.46	7,795.3	-1,903.9	1,713.1	2,561.1	0.00	0.00	
8,600.0	0.38	241.46	7,895.3	-1,904.2	1,712.5	2,561.0	0.00	0.00	
8,700.0	0.38	241.46	7,995.3	-1,904.5	1,712.0	2,560.8	0.00	0.00	
8,800.0	0.38	241.46	8,095.3	-1,904.8	1,711.4	2,560.7	0.00	0.00	
8,898.7	0.38	241.46	8,194.0	-1,905.1	1,710.8	2,560.5	0.00	0.00	Rollins - O04 696 MF20F-3 BHL (6.13.11)
8,900.0	0.38	241.46	8,195.3	-1,905.1	1,710.8	2,560.5	0.00	0.00	
9,000.0	0.38	241.46	8,295.3	-1,905.5	1,710.2	2,560.4	0.00	0.00	
9,048.7	0.38	241.46	8,344.0	-1,905.6	1,710.0	2,560.3	0.00	0.00	Drillers TD @ 8344' TVD
9,100.0	0.38	241.46	8,395.3	-1,905.8	1,709.7	2,560.2	0.00	0.00	
9,200.0	0.38	241.46	8,495.3	-1,906.1	1,709.1	2,560.1	0.00	0.00	
9,300.0	0.38	241.46	8,595.3	-1,906.4	1,708.5	2,559.9	0.00	0.00	
9,400.0	0.38	241.46	8,695.3	-1,906.7	1,707.9	2,559.8	0.00	0.00	
9,500.0	0.38	241.46	8,795.3	-1,907.0	1,707.4	2,559.6	0.00	0.00	
9,600.0	0.38	241.46	8,895.3	-1,907.3	1,706.8	2,559.5	0.00	0.00	
9,700.0	0.38	241.46	8,995.3	-1,907.7	1,706.2	2,559.3	0.00	0.00	
9,800.0	0.38	241.46	9,095.3	-1,908.0	1,705.6	2,559.2	0.00	0.00	
9,900.0	0.38	241.46	9,195.3	-1,908.3	1,705.0	2,559.0	0.00	0.00	
10,000.0	0.38	241.46	9,295.3	-1,908.6	1,704.5	2,558.9	0.00	0.00	
10,100.0	0.38	241.46	9,395.3	-1,908.9	1,703.9	2,558.7	0.00	0.00	
10,200.0	0.38	241.46	9,495.3	-1,909.2	1,703.3	2,558.6	0.00	0.00	
10,300.0	0.38	241.46	9,595.3	-1,909.5	1,702.7	2,558.4	0.00	0.00	
10,400.0	0.38	241.46	9,695.3	-1,909.8	1,702.2	2,558.3	0.00	0.00	
10,500.0	0.38	241.46	9,795.3	-1,910.2	1,701.6	2,558.1	0.00	0.00	
10,600.0	0.38	241.46	9,895.3	-1,910.5	1,701.0	2,558.0	0.00	0.00	
10,700.0	0.38	241.46	9,995.3	-1,910.8	1,700.4	2,557.8	0.00	0.00	
10,704.7	0.38	241.46	10,000.0	-1,910.8	1,700.4	2,557.8	0.00	0.00	Permit TD @ 10000' TVD

Planning Report

Database:	USA EDM 5000 US Multi Users DB	Local Co-ordinate Reference:	Well NP MF20F-3 O04 696 (was 20D-3)
Company:	EnCana Oil & Gas (USA) Inc	TVD Reference:	WELL @ 6044.0ft (Original Well Elev)
Project:	North Piceance	MD Reference:	WELL @ 6044.0ft (Original Well Elev)
Site:	O04 696 (3rd)	North Reference:	True
Well:	NP MF20F-3 O04 696 (was 20D-3)	Survey Calculation Method:	Minimum Curvature
Wellbore:	DD		
Design:	Plan #2		

Targets									
Target Name	Dip Angle	Dip Dir.	TVD	+N/-S	+E/-W	Northing	Easting	Latitude	Longitude
- hit/miss target	(°)	(°)	(ft)	(ft)	(ft)	(ft)	(ft)		
- Shape									
O04 696 MF20F-3 BHL - plan hits target center - Rectangle (sides W30.0 H50.0 D0.0)	0.00	0.00	8,194.0	-1,905.1	1,710.8	1,634,004.13	2,266,352.84	39° 32' 42.98 N	108° 6' 6.95 W
O04 696 MF20F-3 TGT - plan hits target center - Point	0.00	0.00	5,234.0	-1,895.9	1,727.8	1,634,012.87	2,266,370.08	39° 32' 43.07 N	108° 6' 6.73 W

Formations					
Measured Depth	Vertical Depth	Name	Lithology	Dip	Dip Direction
(ft)	(ft)			(°)	(°)
5,391.2	4,694.0	Williams Fork		0.00	
5,432.8	4,734.0	Top of Gas; Inc=15°		0.00	
8,898.7	8,194.0	Rollins		0.00	

Plan Annotations				
Measured Depth	Vertical Depth	Local Coordinates		Comment
(ft)	(ft)	+N/-S (ft)	+E/-W (ft)	
200.0	200.0	0.0	0.0	KOP @ 200'
1,314.0	1,251.9	-233.4	212.7	EOB; Inc=33.4°
4,824.7	4,182.1	-1,662.5	1,515.1	Start Drop -3.00
5,938.6	5,234.0	-1,895.9	1,727.8	EOD; Inc=0°
9,048.7	8,344.0	-1,896.0	1,727.7	Drillers TD @ 8344' TVD
10,704.7	10,000.0	-1,905.1	1,710.8	Permit TD @ 10000' TVD