

Encana OIL & GAS (USA) INC.

ADDENDUM TO LEGAL PLAT FOR

WELL PAD 004 696

SECTION 4, T6S, R96W, 6th P.M.

NW 1/4 SE 1/4

50 25 0 50



SCALE

Sheet 1xx of 11

SCALE: 1" = 60'

DATE: 09-19-06

Drawn By: D.R.B.

Revised: 08-28-07 D.R.B.

Revised: 04-14-08 D.R.B.

Revised: 09-18-08 D.R.B.

Revised: 10-08-08 D.R.B.

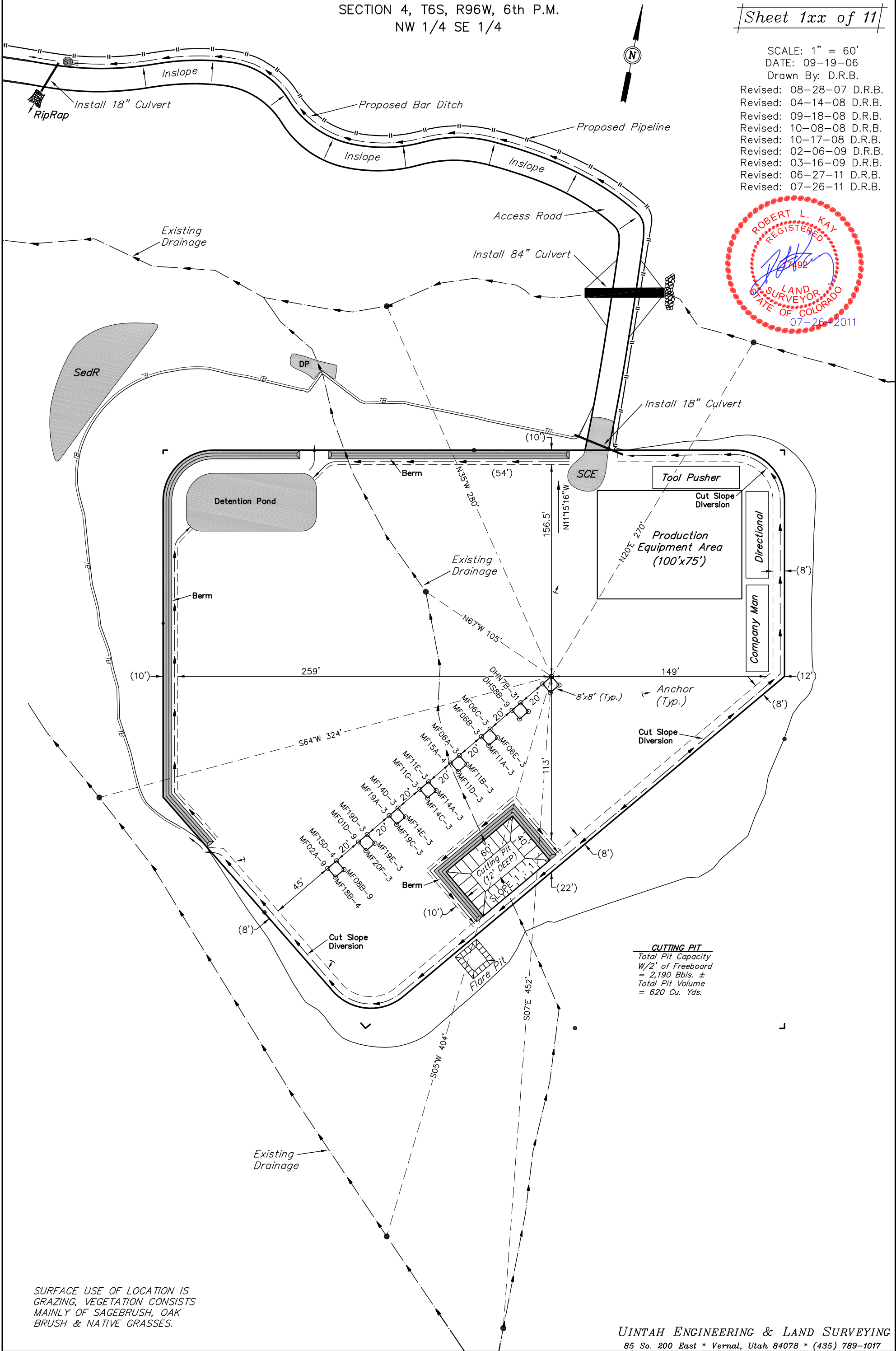
Revised: 10-17-08 D.R.B.

Revised: 02-06-09 D.R.B.

Revised: 03-16-09 D.R.B.

Revised: 06-27-11 D.R.B.

Revised: 07-26-11 D.R.B.



Encana OIL & GAS (USA) INC.

WELL PAD INTERFERENCE PLAT

WELL PAD 004 696

SECTION 4, T6S, R96W, 6th P.M.

NW 1/4 SE 1/4

50 25 0 50



SCALE

Sheet 2 of 11

N

SCALE: 1" = 60'

DATE: 09-19-06

Drawn By: D.R.B.

Revised: 08-28-07 D.R.B.

Revised: 04-14-08 D.R.B.

Revised: 09-18-08 D.R.B.

Revised: 10-08-08 D.R.B.

Revised: 10-17-08 D.R.B.

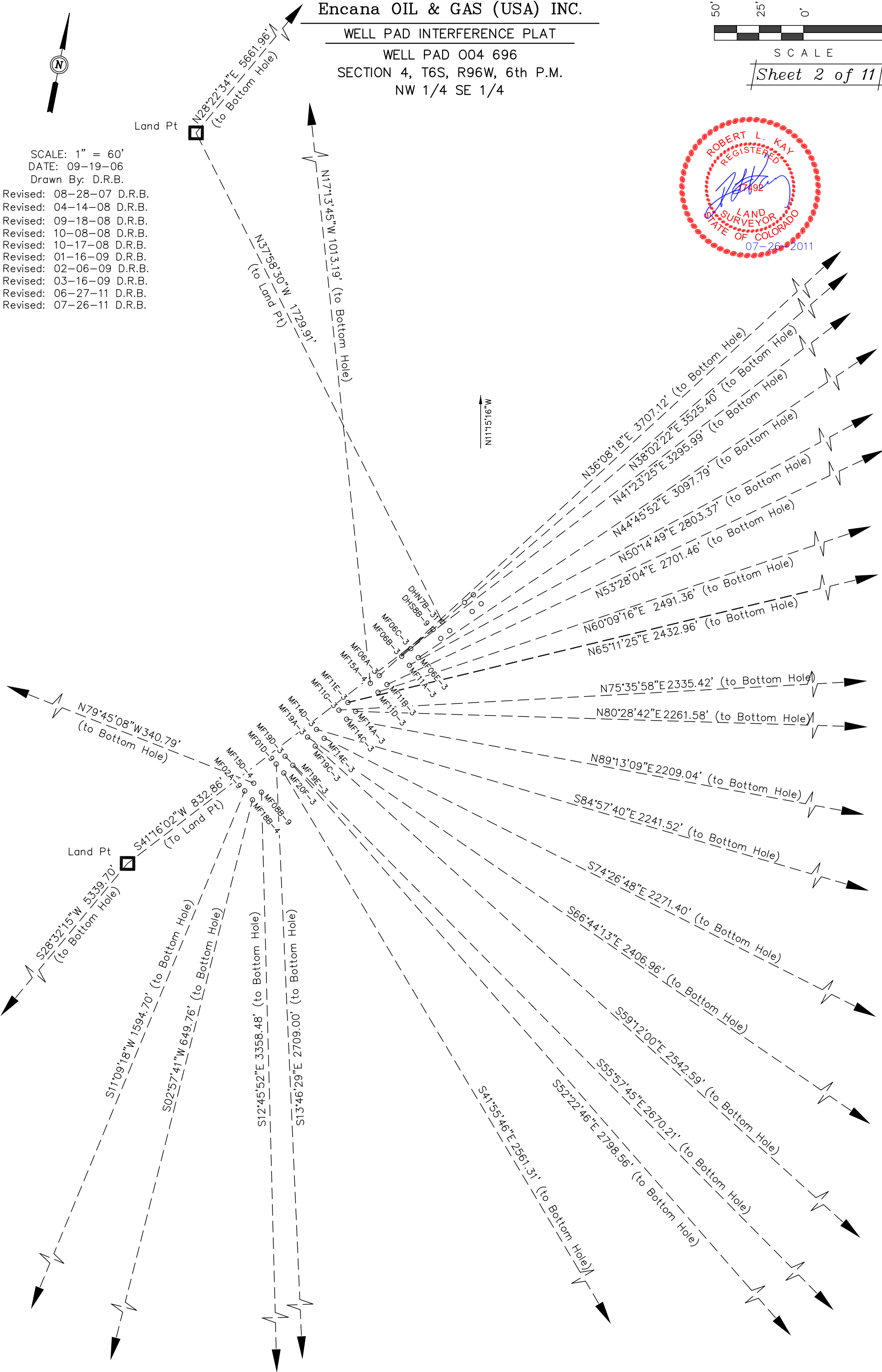
Revised: 01-16-09 D.R.B.

Revised: 02-06-09 D.R.B.

Revised: 03-16-09 D.R.B.

Revised: 06-27-11 D.R.B.

Revised: 07-26-11 D.R.B.



Encana OIL & GAS (USA) INC.

CONSTRUCTION LAYOUT FOR

WELL PAD 004 696

SECTION 4, T6S, R96W, 6th P.M.

NW 1/4 SE 1/4

SCALE: 1" = 60'

DATE: 09-19-06

Drawn By: D.R.B.

Rev: 04-14-08 D.R.B.

Rev: 09-18-08 D.R.B.

Rev: 10-08-08 D.R.B.

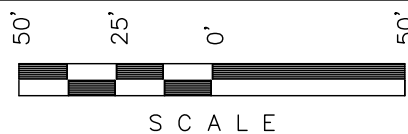
Rev: 02-06-09 D.R.B.

Rev: 03-16-09 D.R.B.

Rev: 03-25-09 P.M.B.

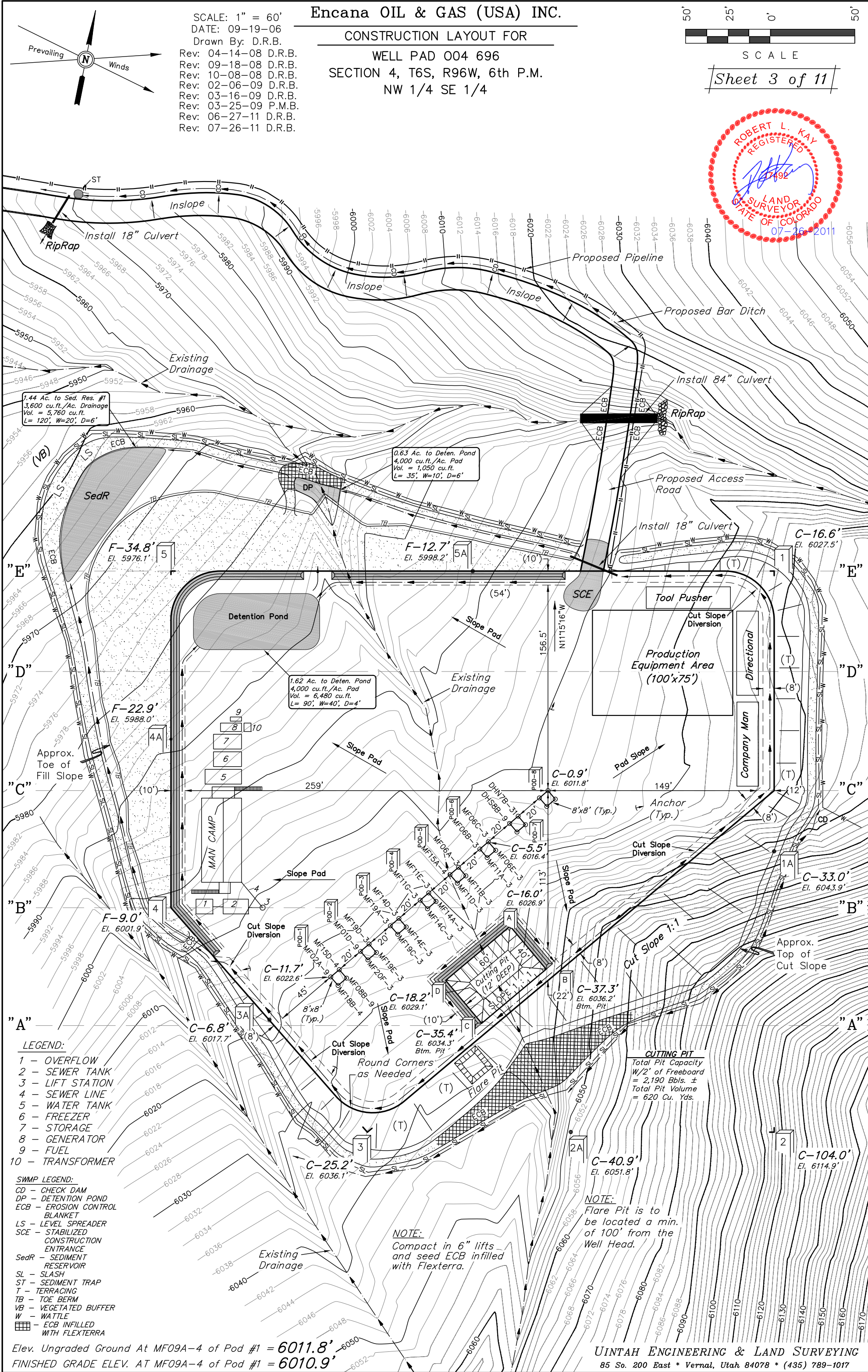
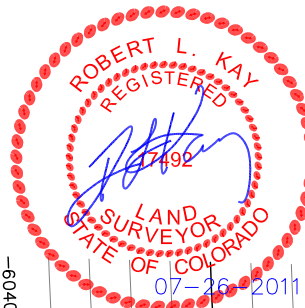
Rev: 06-27-11 D.R.B.

Rev: 07-26-11 D.R.B.



SCALE

Sheet 3 of 11



LEGEND:

- 1 - OVERFLOW
- 2 - SEWER TANK
- 3 - LIFT STATION
- 4 - SEWER LINE
- 5 - WATER TANK
- 6 - FREEZER
- 7 - STORAGE
- 8 - GENERATOR
- 9 - FUEL
- 10 - TRANSFORMER

SWMP LEGEND:

- CD - CHECK DAM
- DP - DETENTION POND
- ECB - EROSION CONTROL BLANKET
- LS - LEVEL SPREADER
- SCE - STABILIZED CONSTRUCTION ENTRANCE
- SedR - SEDIMENT RESERVOIR
- SL - SLASH
- ST - SEDIMENT TRAP
- T - TERRACING
- TB - TOE BERM
- VB - VEGETATED BUFFER
- W - WATTLE
- ECB INFILLED WITH FLEXITERRA

Elev. Ungraded Ground At MF09A-4 of Pod #1 = 6011.8'
FINISHED GRADE ELEV. AT MF09A-4 of Pod #1 = 6010.9'

UINTAH ENGINEERING & LAND SURVEYING
85 So. 200 East * Vernal, Utah 84078 * (435) 789-1017

Encana OIL & GAS (USA) INC.

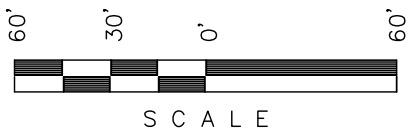
PRE-CONSTRUCTION LAYOUT FOR

WELL PAD 004 696

SECTION 4, T6S, R96W, 6th P.M.

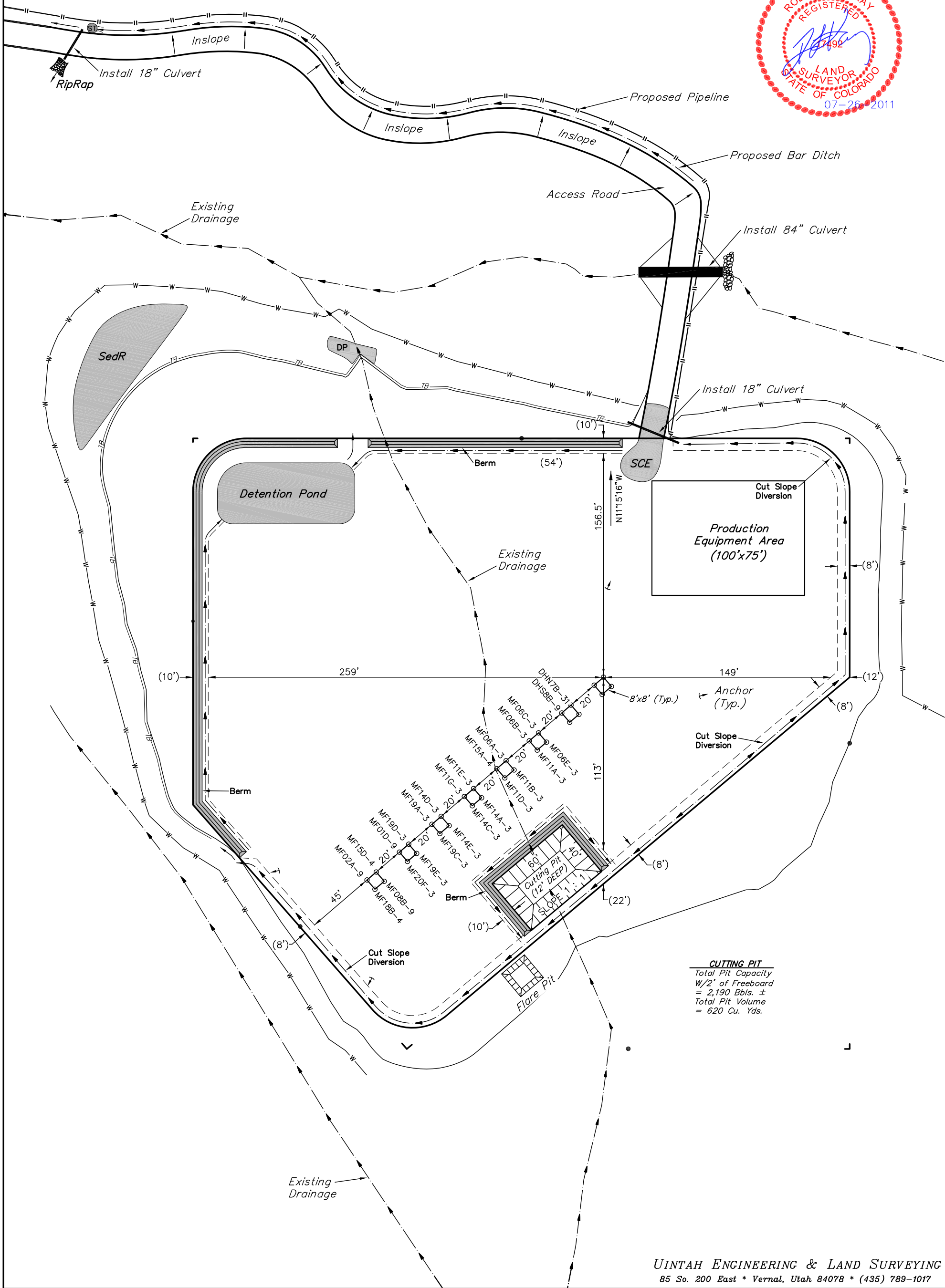
NW 1/4 SE 1/4

SCALE: 1" = 60'
DATE: 03-16-09
DRAWN BY: D.R.B.
Revised: 03-25-09 P.M.B.
Revised: 06-27-11 D.R.B.
Revised: 07-26-11 D.R.B.



SCALE

Sheet 3a of 11



CUTTING PIT
Total Pit Capacity
W/2' of Freeboard
= 2,190 Bbls. ±
Total Pit Volume
= 620 Cu. Yds.

Encana OIL & GAS (USA) INC.
CONSTRUCTION LAYOUT CROSS SECTION FOR

WELL PAD 004 696
SECTION 4, T6S, R96W, 6th P.M.
NW 1/4 SE 1/4

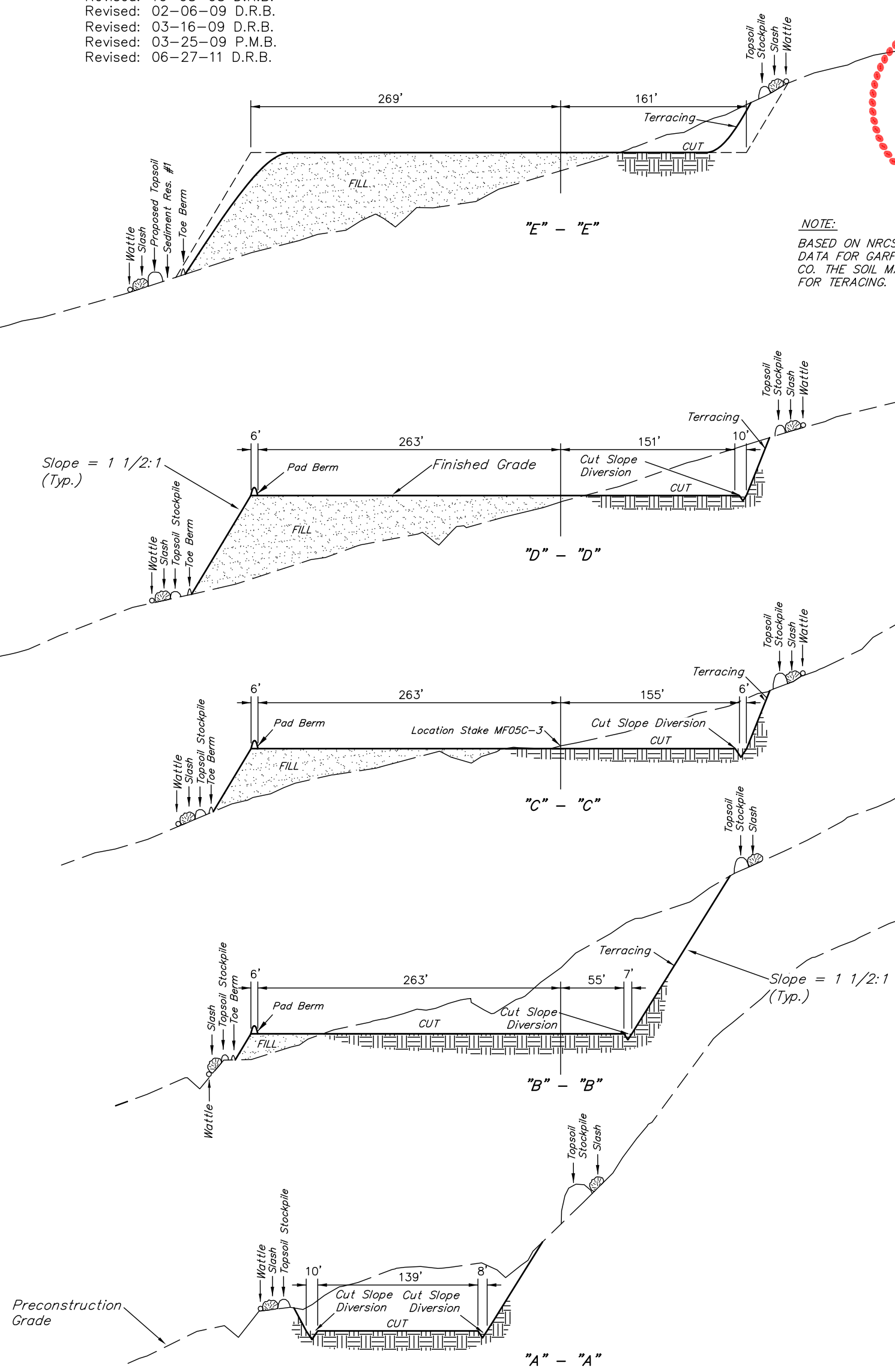
Sheet 4 of 11

1" = 40'
X-Section
Scale
1" = 100'

DATE: 09-19-06
Drawn By: D.R.B.
Revised: 08-23-07 D.R.B.
Revised: 08-28-07 D.R.B.
Revised: 04-14-08 D.R.B.
Revised: 09-18-08 D.R.B.
Revised: 10-08-08 D.R.B.
Revised: 02-06-09 D.R.B.
Revised: 03-16-09 D.R.B.
Revised: 03-25-09 P.M.B.
Revised: 06-27-11 D.R.B.



NOTE:
BASED ON NRCS U.S. SOIL SURVEY
DATA FOR GARFIELD COUNTY AREA,
CO. THE SOIL MAY BE TOO ROCKY
FOR TERRACING.



NOTE:
Topsoil should not be
Stripped Below Finished
Grade on Substructure Area.

* NOTE:
FILL QUANTITY INCLUDES
5% FOR COMPACTION

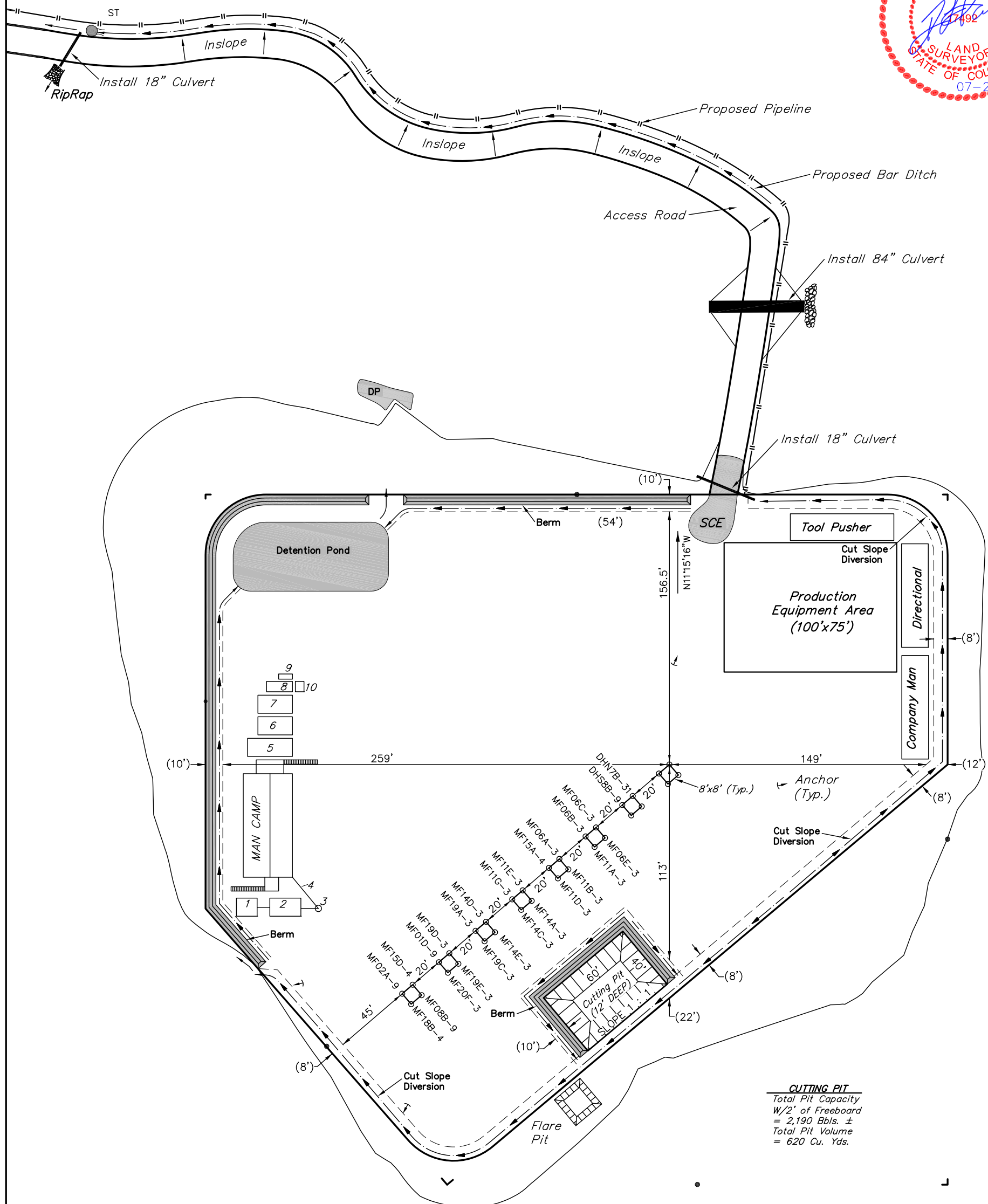
APPROXIMATE YARDAGES

(6") Topsoil Stripping	=	3,390 Cu. Yds.
Remaining Location	=	38,110 Cu. Yds.
TOTAL CUT	=	41,500 CU.YDS.
FILL	=	37,800 CU.YDS.

EXCESS MATERIAL	=	3,700 Cu. Yds.
Topsoil & Pit Backfill (1/2 Pit Vol.)	=	3,700 Cu. Yds.
EXCESS UNBALANCE (After Interim Rehabilitation)	=	0 Cu. Yds.

TYPICAL RIG LAYOUT FOR

Sheet 5 of 11



UINTAH ENGINEERING & LAND SURVEYING
85 So. 200 East * Vernal, Utah 84078 * (435) 789-1017

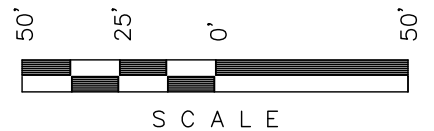
Encana OIL & GAS (USA) INC.

PRODUCTION SCHEMATIC FOR

WELL PAD 004 696

SECTION 4, T6S, R96W, 6th P.M.

NW 1/4 SE 1/4



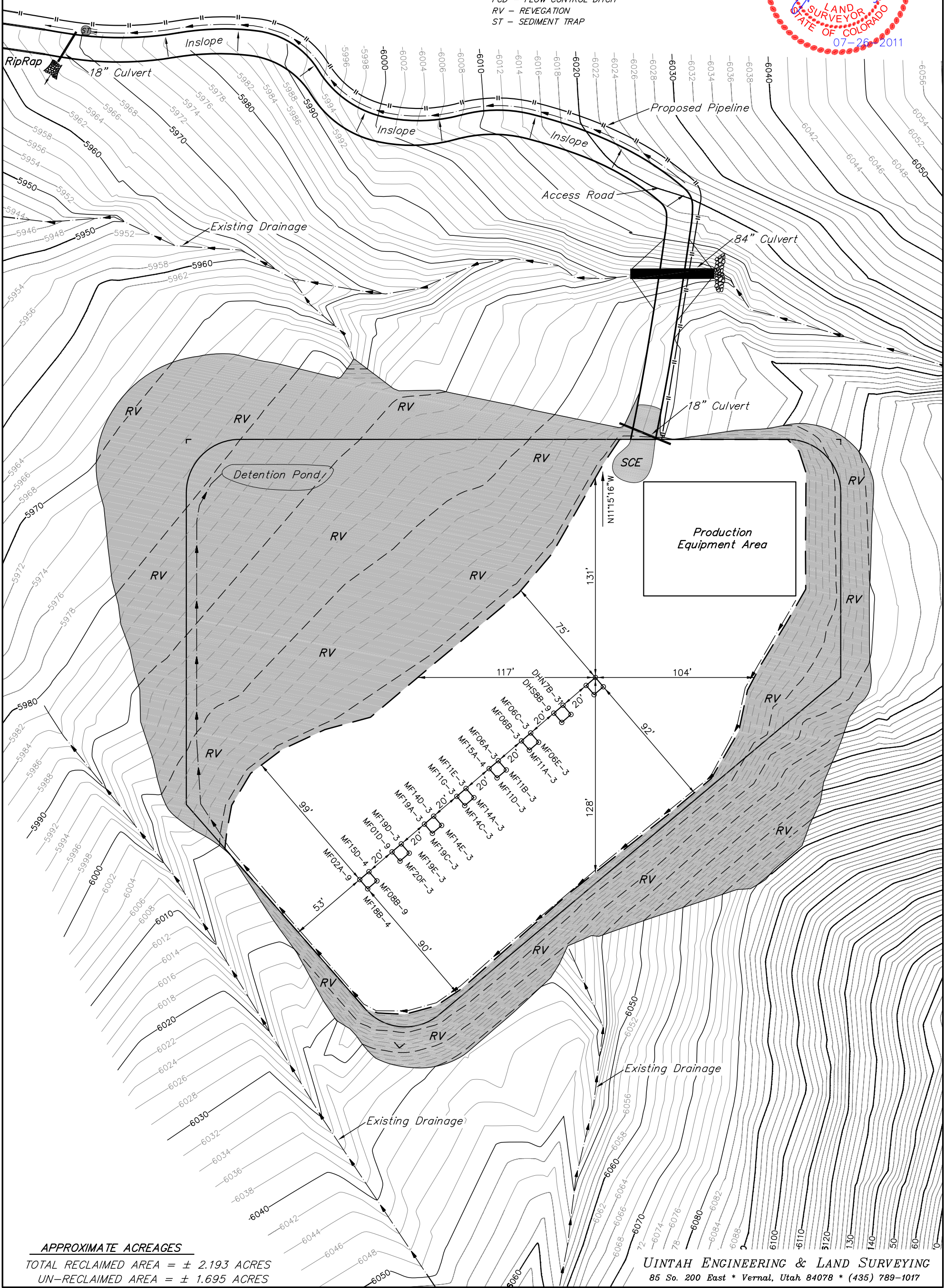
SCALE

Sheet 6 of 11



SWAMP LEGEND:

- FCD - FLOW CONTROL DITCH
- RV - REVEGATION
- ST - SEDIMENT TRAP



APPROXIMATE ACREAGES

TOTAL RECLAIMED AREA = ± 2.193 ACRES
UN-RECLAIMED AREA = ± 1.695 ACRES

UINTAH ENGINEERING & LAND SURVEYING
85 So. 200 East * Vernal, Utah 84078 * (435) 789-1017

Encana OIL & GAS (USA) INC.

SURFACE DISTURBANCE AREA FOR

WELL PAD 004 696

SECTION 4, T6S, R96W, 6th P.M.

NW 1/4 SE 1/4

SCALE: 1" = 60'

DATE: 03-16-09

Drawn By: D.R.B.

Revised: 03-25-09 P.M.B.

Revised: 06-27-11 D.R.B.

Revised: 07-26-11 D.R.B.

60' 30' 0' 60'



SCALE

Sheet 7 of 11

