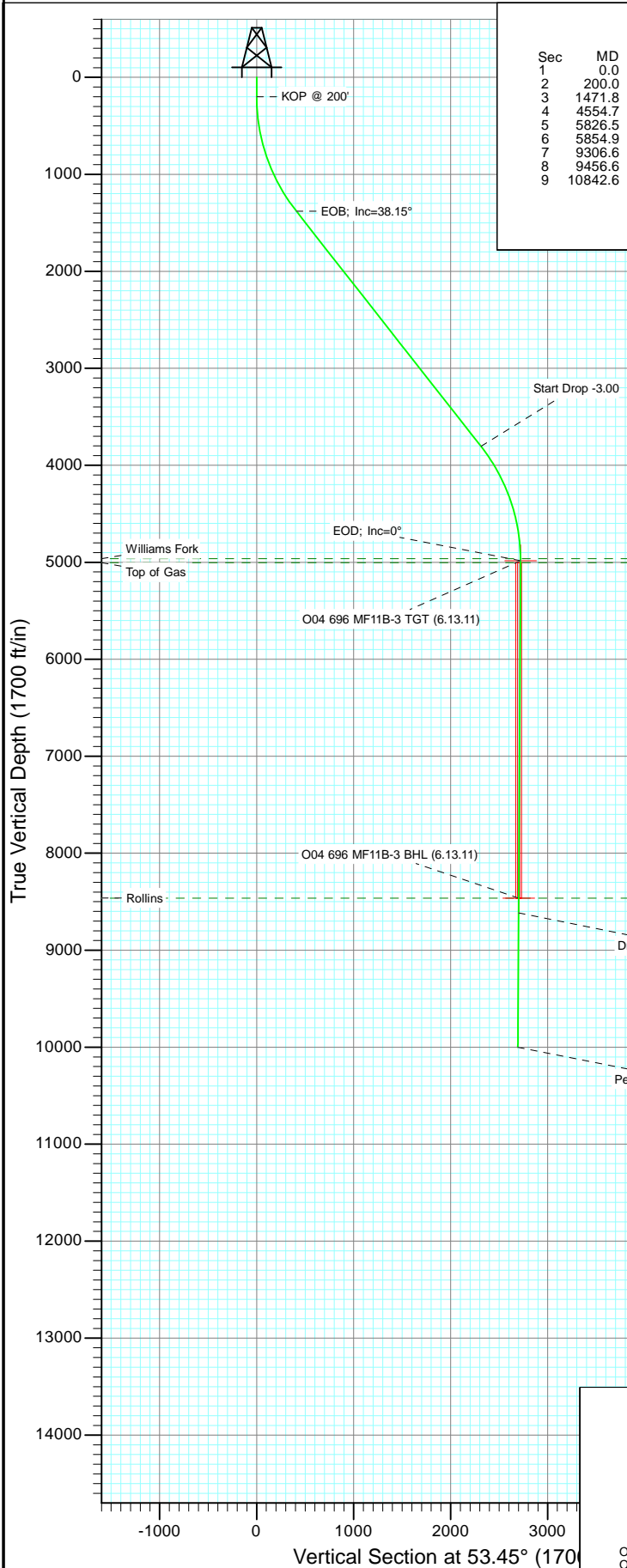
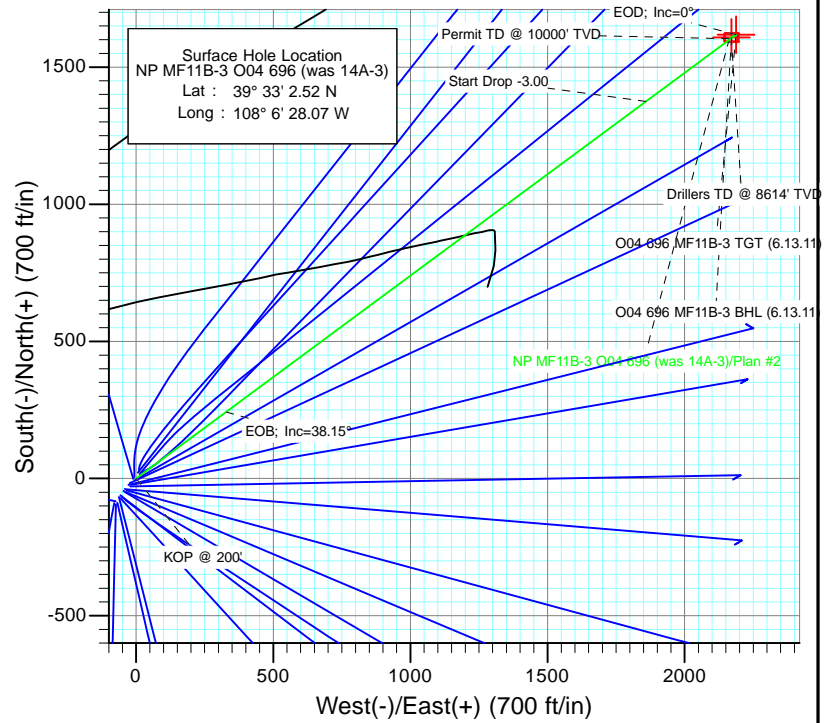




Project: North Piceance  
 Site: O04 696 (3rd)  
 Well: NP MF11B-3 O04 696 (was 14A-3)  
 Wellbore: DD  
 Design: Plan #2



SECTION DETAILS										
Sec	MD	Inc	Azi	TVD	+N/-S	+E/-W	Dleg	TFace	Vsect	Target
1	0.0	0.00	0.00	0.0	0.0	0.0	0.00	0.00	0.0	
2	200.0	0.00	0.00	200.0	0.0	0.0	0.00	0.00	0.0	
3	1471.8	38.15	53.51	1379.9	242.7	328.0	3.00	53.51	408.0	
4	4554.7	38.15	53.51	3804.1	1375.2	1859.3	0.00	0.00	2312.6	O04 696 MF11B-3 TGT (6.13.11)
5	5826.5	0.00	0.00	4984.0	1617.9	2187.3	3.00	180.00	2720.6	O04 696 MF11B-3 BHL (6.13.11)
6	5854.9	0.33	239.36	5012.3	1617.9	2187.2	1.15	239.36	2720.6	
7	9306.6	0.33	239.36	8464.0	1607.9	2170.3	0.00	0.00	2701.0	
8	9456.6	0.33	239.36	8614.0	1607.4	2169.6	0.00	0.00	2700.2	
9	10842.6	0.33	239.36	10000.0	1603.4	2162.8	0.00	0.00	2692.3	



Azimuths to True North  
 Magnetic North: 10.54°

Magnetic Field  
 Strength: 52365.1nT  
 Dip Angle: 65.79°  
 Date: 6/17/2010  
 Model: IGRF2010

#### FORMATION TOP DETAILS

TVDPath	MDPath	Formation
4964.0	5806.5	Williams Fork
5004.0	5846.5	Top of Gas
8464.0	9306.6	Rollins

Plan #2 NP MF11B-3 O04 696 (was 14A-3) 95xxx; LR WELL @ 6044.0ft (Original Well Elev) North American Datum 1983 Well NP MF11B-3 O04 696 (was 14A-3), True North							
Type TD	Target No Target (Freehand)	Azimuth 53.45	Origin Type Slot	N/S 0.0	E/W 0.0	From TVD 0.0	
Name	TVD	+N/-S	+E/-W	Latitude	Longitude		
O04 696 MF11B-3 TGT (6.13.11)	4984.0	1617.9	2187.3	39° 33' 18.51 N	108° 6' 0.14 W		
O04 696 MF11B-3 BHL (6.13.11)	8464.0	1607.9	2170.3	39° 33' 18.41 N	108° 6' 0.36 W		

## Planning Report

<b>Database:</b>	USA EDM 5000 US Multi Users DB	<b>Local Co-ordinate Reference:</b>	Well NP MF11B-3 O04 696 (was 14A-3)
<b>Company:</b>	EnCana Oil & Gas (USA) Inc	<b>TVD Reference:</b>	WELL @ 6044.0ft (Original Well Elev)
<b>Project:</b>	North Piceance	<b>MD Reference:</b>	WELL @ 6044.0ft (Original Well Elev)
<b>Site:</b>	O04 696 (3rd)	<b>North Reference:</b>	True
<b>Well:</b>	NP MF11B-3 O04 696 (was 14A-3)	<b>Survey Calculation Method:</b>	Minimum Curvature
<b>Wellbore:</b>	DD		
<b>Design:</b>	Plan #2		

<b>Project</b>	North Piceance		
<b>Map System:</b>	US State Plane 1983	<b>System Datum:</b>	Mean Sea Level
<b>Geo Datum:</b>	North American Datum 1983		
<b>Map Zone:</b>	Colorado Central Zone		

<b>Site</b>	O04 696 (3rd)			
<b>Site Position:</b>		<b>Northing:</b>	1,635,941.08 ft	<b>Latitude:</b> 39° 33' 1.64 N
<b>From:</b>	Lat/Long	<b>Easting:</b>	2,264,673.43 ft	<b>Longitude:</b> 108° 6' 29.09 W
<b>Position Uncertainty:</b>	0.0 ft	<b>Slot Radius:</b>	13.200 in	<b>Grid Convergence:</b> -1.64 °

<b>Well</b>	NP MF11B-3 O04 696 (was 14A-3)			
<b>Well Position</b>	<b>+N/-S</b>	0.0 ft	<b>Northing:</b>	1,636,027.77 ft
	<b>+E/-W</b>	0.0 ft	<b>Easting:</b>	2,264,755.84 ft
<b>Position Uncertainty</b>		0.0 ft	<b>Wellhead Elevation:</b>	ft
			<b>Ground Level:</b>	6,022.0 ft

<b>Wellbore</b>	DD				
<b>Magnetics</b>	<b>Model Name</b>	<b>Sample Date</b>	<b>Declination (°)</b>	<b>Dip Angle (°)</b>	<b>Field Strength (nT)</b>
	IGRF2010	6/17/2010	10.54	65.79	52,365

<b>Design</b>	Plan #2			
<b>Audit Notes:</b>				
<b>Version:</b>	<b>Phase:</b>	PLAN	<b>Tie On Depth:</b>	0.0
<b>Vertical Section:</b>	<b>Depth From (TVD) (ft)</b>	<b>+N/-S (ft)</b>	<b>+E/-W (ft)</b>	<b>Direction (°)</b>
	0.0	0.0	0.0	53.45

<b>Plan Sections</b>										
Measured Depth (ft)	Inclination (°)	Azimuth (°)	Vertical Depth (ft)	+N/-S (ft)	+E/-W (ft)	Dogleg Rate (°/100ft)	Build Rate (°/100ft)	Turn Rate (°/100ft)	TFO (°)	Target
0.0	0.00	0.00	0.0	0.0	0.0	0.00	0.00	0.00	0.00	
200.0	0.00	0.00	200.0	0.0	0.0	0.00	0.00	0.00	0.00	
1,471.8	38.15	53.51	1,379.9	242.7	328.0	3.00	3.00	0.00	53.51	
4,554.7	38.15	53.51	3,804.1	1,375.2	1,859.3	0.00	0.00	0.00	0.00	
5,826.5	0.00	0.00	4,984.0	1,617.9	2,187.3	3.00	-3.00	0.00	180.00	O04 696 MF11B-3 TC
5,854.9	0.33	239.36	5,012.3	1,617.9	2,187.2	1.15	1.15	-425.73	239.36	
9,306.6	0.33	239.36	8,464.0	1,607.9	2,170.3	0.00	0.00	0.00	0.00	O04 696 MF11B-3 B-
9,456.6	0.33	239.36	8,614.0	1,607.4	2,169.6	0.00	0.00	0.00	0.00	
10,842.6	0.33	239.36	10,000.0	1,603.4	2,162.8	0.00	0.00	0.00	0.00	

# Planning Report

**Database:** USA EDM 5000 US Multi Users DB  
**Company:** EnCana Oil & Gas (USA) Inc  
**Project:** North Piceance  
**Site:** O04 696 (3rd)  
**Well:** NP MF11B-3 O04 696 (was 14A-3)  
**Wellbore:** DD  
**Design:** Plan #2

**Local Co-ordinate Reference:** Well NP MF11B-3 O04 696 (was 14A-3)  
**TVD Reference:** WELL @ 6044.0ft (Original Well Elev)  
**MD Reference:** WELL @ 6044.0ft (Original Well Elev)  
**North Reference:** True  
**Survey Calculation Method:** Minimum Curvature

## Planned Survey

Measured Depth (ft)	Inclination (°)	Azimuth (°)	Vertical Depth (ft)	+N/-S (ft)	+E/-W (ft)	Vertical Section (ft)	Dogleg Rate (°/100ft)	Build Rate (°/100ft)	Comments / Formations
0.0	0.00	0.00	0.0	0.0	0.0	0.0	0.00	0.00	
30.0	0.00	0.00	30.0	0.0	0.0	0.0	0.00	0.00	
60.0	0.00	0.00	60.0	0.0	0.0	0.0	0.00	0.00	
90.0	0.00	0.00	90.0	0.0	0.0	0.0	0.00	0.00	
120.0	0.00	0.00	120.0	0.0	0.0	0.0	0.00	0.00	
150.0	0.00	0.00	150.0	0.0	0.0	0.0	0.00	0.00	
180.0	0.00	0.00	180.0	0.0	0.0	0.0	0.00	0.00	
200.0	0.00	0.00	200.0	0.0	0.0	0.0	0.00	0.00	KOP @ 200'
210.0	0.30	53.51	210.0	0.0	0.0	0.0	3.00	3.00	
240.0	1.20	53.51	240.0	0.2	0.3	0.4	3.00	3.00	
270.0	2.10	53.51	270.0	0.8	1.0	1.3	3.00	3.00	
300.0	3.00	53.51	300.0	1.6	2.1	2.6	3.00	3.00	
330.0	3.90	53.51	329.9	2.6	3.6	4.4	3.00	3.00	
360.0	4.80	53.51	359.8	4.0	5.4	6.7	3.00	3.00	
390.0	5.70	53.51	389.7	5.6	7.6	9.4	3.00	3.00	
420.0	6.60	53.51	419.5	7.5	10.2	12.7	3.00	3.00	
450.0	7.50	53.51	449.3	9.7	13.1	16.3	3.00	3.00	
480.0	8.40	53.51	479.0	12.2	16.5	20.5	3.00	3.00	
510.0	9.30	53.51	508.6	14.9	20.2	25.1	3.00	3.00	
540.0	10.20	53.51	538.2	17.9	24.3	30.2	3.00	3.00	
570.0	11.10	53.51	567.7	21.2	28.7	35.7	3.00	3.00	
600.0	12.00	53.51	597.1	24.8	33.6	41.7	3.00	3.00	
630.0	12.90	53.51	626.4	28.7	38.8	48.2	3.00	3.00	
660.0	13.80	53.51	655.6	32.8	44.3	55.1	3.00	3.00	
690.0	14.70	53.51	684.6	37.2	50.3	62.5	3.00	3.00	
720.0	15.60	53.51	713.6	41.8	56.6	70.4	3.00	3.00	
750.0	16.50	53.51	742.4	46.8	63.2	78.6	3.00	3.00	
780.0	17.40	53.51	771.1	52.0	70.3	87.4	3.00	3.00	
810.0	18.30	53.51	799.7	57.4	77.7	96.6	3.00	3.00	
840.0	19.20	53.51	828.1	63.2	85.4	106.2	3.00	3.00	
870.0	20.10	53.51	856.3	69.2	93.5	116.3	3.00	3.00	
900.0	21.00	53.51	884.4	75.4	102.0	126.9	3.00	3.00	
930.0	21.90	53.51	912.4	82.0	110.8	137.8	3.00	3.00	
960.0	22.80	53.51	940.1	88.7	120.0	149.2	3.00	3.00	
990.0	23.70	53.51	967.7	95.8	129.5	161.1	3.00	3.00	
1,020.0	24.60	53.51	995.0	103.1	139.4	173.3	3.00	3.00	
1,050.0	25.50	53.51	1,022.2	110.6	149.6	186.0	3.00	3.00	
1,080.0	26.40	53.51	1,049.2	118.4	160.1	199.2	3.00	3.00	
1,110.0	27.30	53.51	1,076.0	126.5	171.0	212.7	3.00	3.00	
1,140.0	28.20	53.51	1,102.5	134.8	182.3	226.7	3.00	3.00	
1,170.0	29.10	53.51	1,128.8	143.4	193.8	241.1	3.00	3.00	
1,200.0	30.00	53.51	1,154.9	152.2	205.7	255.9	3.00	3.00	
1,230.0	30.90	53.51	1,180.8	161.2	217.9	271.1	3.00	3.00	
1,260.0	31.80	53.51	1,206.4	170.5	230.5	286.7	3.00	3.00	
1,290.0	32.70	53.51	1,231.8	180.0	243.4	302.7	3.00	3.00	
1,320.0	33.60	53.51	1,256.9	189.8	256.5	319.1	3.00	3.00	
1,350.0	34.50	53.51	1,281.8	199.7	270.0	335.9	3.00	3.00	
1,380.0	35.40	53.51	1,306.3	210.0	283.9	353.1	3.00	3.00	
1,410.0	36.30	53.51	1,330.7	220.4	298.0	370.6	3.00	3.00	
1,440.0	37.20	53.51	1,354.7	231.1	312.4	388.6	3.00	3.00	
1,470.0	38.10	53.51	1,378.5	242.0	327.2	406.9	3.00	3.00	
1,471.8	38.15	53.51	1,379.9	242.7	328.0	408.0	3.00	3.00	EOB; Inc=38.15°

## Planning Report

<b>Database:</b>	USA EDM 5000 US Multi Users DB	<b>Local Co-ordinate Reference:</b>	Well NP MF11B-3 O04 696 (was 14A-3)
<b>Company:</b>	EnCana Oil & Gas (USA) Inc	<b>TVD Reference:</b>	WELL @ 6044.0ft (Original Well Elev)
<b>Project:</b>	North Piceance	<b>MD Reference:</b>	WELL @ 6044.0ft (Original Well Elev)
<b>Site:</b>	O04 696 (3rd)	<b>North Reference:</b>	True
<b>Well:</b>	NP MF11B-3 O04 696 (was 14A-3)	<b>Survey Calculation Method:</b>	Minimum Curvature
<b>Wellbore:</b>	DD		
<b>Design:</b>	Plan #2		

### Planned Survey

Measured Depth (ft)	Inclination (°)	Azimuth (°)	Vertical Depth (ft)	+N/-S (ft)	+E/-W (ft)	Vertical Section (ft)	Dogleg Rate (°/100ft)	Build Rate (°/100ft)	Comments / Formations
1,500.0	38.15	53.51	1,402.0	253.0	342.1	425.5	0.00	0.00	
1,530.0	38.15	53.51	1,425.6	264.0	357.0	444.0	0.00	0.00	
1,560.0	38.15	53.51	1,449.2	275.1	371.9	462.5	0.00	0.00	
1,590.0	38.15	53.51	1,472.8	286.1	386.8	481.1	0.00	0.00	
1,620.0	38.15	53.51	1,496.4	297.1	401.7	499.6	0.00	0.00	
1,650.0	38.15	53.51	1,520.0	308.1	416.6	518.1	0.00	0.00	
1,680.0	38.15	53.51	1,543.6	319.1	431.5	536.7	0.00	0.00	
1,710.0	38.15	53.51	1,567.2	330.2	446.4	555.2	0.00	0.00	
1,740.0	38.15	53.51	1,590.8	341.2	461.3	573.7	0.00	0.00	
1,770.0	38.15	53.51	1,614.4	352.2	476.2	592.3	0.00	0.00	
1,800.0	38.15	53.51	1,637.9	363.2	491.1	610.8	0.00	0.00	
1,830.0	38.15	53.51	1,661.5	374.2	506.0	629.3	0.00	0.00	
1,860.0	38.15	53.51	1,685.1	385.3	520.9	647.9	0.00	0.00	
1,890.0	38.15	53.51	1,708.7	396.3	535.8	666.4	0.00	0.00	
1,920.0	38.15	53.51	1,732.3	407.3	550.7	684.9	0.00	0.00	
1,950.0	38.15	53.51	1,755.9	418.3	565.6	703.5	0.00	0.00	
1,980.0	38.15	53.51	1,779.5	429.4	580.5	722.0	0.00	0.00	
2,010.0	38.15	53.51	1,803.1	440.4	595.4	740.5	0.00	0.00	
2,040.0	38.15	53.51	1,826.7	451.4	610.3	759.1	0.00	0.00	
2,070.0	38.15	53.51	1,850.3	462.4	625.2	777.6	0.00	0.00	
2,100.0	38.15	53.51	1,873.9	473.4	640.1	796.1	0.00	0.00	
2,130.0	38.15	53.51	1,897.4	484.5	655.0	814.7	0.00	0.00	
2,160.0	38.15	53.51	1,921.0	495.5	669.9	833.2	0.00	0.00	
2,190.0	38.15	53.51	1,944.6	506.5	684.8	851.7	0.00	0.00	
2,220.0	38.15	53.51	1,968.2	517.5	699.7	870.3	0.00	0.00	
2,250.0	38.15	53.51	1,991.8	528.5	714.6	888.8	0.00	0.00	
2,280.0	38.15	53.51	2,015.4	539.6	729.5	907.3	0.00	0.00	
2,310.0	38.15	53.51	2,039.0	550.6	744.4	925.9	0.00	0.00	
2,340.0	38.15	53.51	2,062.6	561.6	759.3	944.4	0.00	0.00	
2,370.0	38.15	53.51	2,086.2	572.6	774.2	962.9	0.00	0.00	
2,400.0	38.15	53.51	2,109.8	583.6	789.1	981.5	0.00	0.00	
2,430.0	38.15	53.51	2,133.3	594.7	804.0	1,000.0	0.00	0.00	
2,460.0	38.15	53.51	2,156.9	605.7	818.9	1,018.5	0.00	0.00	
2,490.0	38.15	53.51	2,180.5	616.7	833.8	1,037.1	0.00	0.00	

### Targets

Target Name	Dip Angle (°)	Dip Dir. (°)	TVD (ft)	+N/-S (ft)	+E/-W (ft)	Northing (ft)	Easting (ft)	Latitude	Longitude
- hit/miss target									
- Shape									
O04 696 MF11B-3 TGT (	0.00	0.00	4,984.0	1,617.9	2,187.3	1,637,582.23	2,266,988.68	39° 33' 18.51 N	108° 6' 0.14 W
- plan misses target center by 3270.2ft at 2490.0ft MD (2180.5 TVD, 616.7 N, 833.8 E)									
- Point									
O04 696 MF11B-3 BHL (	0.00	0.00	8,464.0	1,607.9	2,170.3	1,637,572.67	2,266,971.44	39° 33' 18.41 N	108° 6' 0.36 W
- plan misses target center by 6500.1ft at 2490.0ft MD (2180.5 TVD, 616.7 N, 833.8 E)									
- Rectangle (sides W30.0 H50.0 D0.0)									

# Planning Report

<b>Database:</b>	USA EDM 5000 US Multi Users DB	<b>Local Co-ordinate Reference:</b>	Well NP MF11B-3 O04 696 (was 14A-3)
<b>Company:</b>	EnCana Oil & Gas (USA) Inc	<b>TVD Reference:</b>	WELL @ 6044.0ft (Original Well Elev)
<b>Project:</b>	North Piceance	<b>MD Reference:</b>	WELL @ 6044.0ft (Original Well Elev)
<b>Site:</b>	O04 696 (3rd)	<b>North Reference:</b>	True
<b>Well:</b>	NP MF11B-3 O04 696 (was 14A-3)	<b>Survey Calculation Method:</b>	Minimum Curvature
<b>Wellbore:</b>	DD		
<b>Design:</b>	Plan #2		

Planned Survey									
Measured Depth (ft)	Inclination (°)	Azimuth (°)	Vertical Depth (ft)	+N/-S (ft)	+E/-W (ft)	Vertical Section (ft)	Dogleg Rate (°/100ft)	Build Rate (°/100ft)	Comments / Formations
2,500.0	38.15	53.51	2,188.4	620.4	838.7	1,043.2	0.00	0.00	
2,600.0	38.15	53.51	2,267.0	657.1	888.4	1,105.0	0.00	0.00	
2,700.0	38.15	53.51	2,345.7	693.9	938.1	1,166.8	0.00	0.00	
2,800.0	38.15	53.51	2,424.3	730.6	987.7	1,228.6	0.00	0.00	
2,900.0	38.15	53.51	2,502.9	767.3	1,037.4	1,290.3	0.00	0.00	
3,000.0	38.15	53.51	2,581.6	804.1	1,087.1	1,352.1	0.00	0.00	
3,100.0	38.15	53.51	2,660.2	840.8	1,136.7	1,413.9	0.00	0.00	
3,200.0	38.15	53.51	2,738.8	877.6	1,186.4	1,475.7	0.00	0.00	
3,300.0	38.15	53.51	2,817.5	914.3	1,236.1	1,537.5	0.00	0.00	
3,400.0	38.15	53.51	2,896.1	951.0	1,285.7	1,599.2	0.00	0.00	
3,500.0	38.15	53.51	2,974.7	987.8	1,335.4	1,661.0	0.00	0.00	
3,600.0	38.15	53.51	3,053.4	1,024.5	1,385.1	1,722.8	0.00	0.00	
3,700.0	38.15	53.51	3,132.0	1,061.2	1,434.7	1,784.6	0.00	0.00	
3,800.0	38.15	53.51	3,210.7	1,098.0	1,484.4	1,846.3	0.00	0.00	
3,900.0	38.15	53.51	3,289.3	1,134.7	1,534.1	1,908.1	0.00	0.00	
4,000.0	38.15	53.51	3,367.9	1,171.5	1,583.7	1,969.9	0.00	0.00	
4,100.0	38.15	53.51	3,446.6	1,208.2	1,633.4	2,031.7	0.00	0.00	
4,200.0	38.15	53.51	3,525.2	1,244.9	1,683.1	2,093.5	0.00	0.00	
4,300.0	38.15	53.51	3,603.8	1,281.7	1,732.7	2,155.2	0.00	0.00	
4,400.0	38.15	53.51	3,682.5	1,318.4	1,782.4	2,217.0	0.00	0.00	
4,500.0	38.15	53.51	3,761.1	1,355.1	1,832.1	2,278.8	0.00	0.00	
4,554.7	38.15	53.51	3,804.1	1,375.2	1,859.3	2,312.6	0.00	0.00	Start Drop -3.00
4,600.0	36.80	53.51	3,840.1	1,391.6	1,881.4	2,340.1	3.00	-3.00	
4,700.0	33.80	53.51	3,921.7	1,426.0	1,927.8	2,397.9	3.00	-3.00	
4,800.0	30.80	53.51	4,006.2	1,457.8	1,970.8	2,451.3	3.00	-3.00	
4,900.0	27.80	53.51	4,093.4	1,486.9	2,010.1	2,500.3	3.00	-3.00	
5,000.0	24.80	53.51	4,183.0	1,513.2	2,045.7	2,544.6	3.00	-3.00	
5,100.0	21.80	53.51	4,274.9	1,536.7	2,077.5	2,584.1	3.00	-3.00	
5,200.0	18.80	53.51	4,368.6	1,557.3	2,105.4	2,618.8	3.00	-3.00	
5,300.0	15.80	53.51	4,464.1	1,575.0	2,129.3	2,648.5	3.00	-3.00	
5,400.0	12.80	53.51	4,561.0	1,589.7	2,149.2	2,673.2	3.00	-3.00	
5,500.0	9.80	53.51	4,659.1	1,601.3	2,164.9	2,692.8	3.00	-3.00	
5,600.0	6.80	53.51	4,758.0	1,609.9	2,176.5	2,707.2	3.00	-3.00	
5,700.0	3.80	53.51	4,857.6	1,615.4	2,183.9	2,716.4	3.00	-3.00	
5,800.0	0.80	53.51	4,957.5	1,617.8	2,187.2	2,720.5	3.00	-3.00	
5,806.5	0.60	53.51	4,964.0	1,617.8	2,187.2	2,720.5	3.00	-3.00	Williams Fork
5,826.5	0.00	0.00	4,984.0	1,617.9	2,187.3	2,720.6	3.00	-3.00	EOD; Inc=0° - O04 696 MF11B-3 TGT (6.13.11)
5,846.5	0.23	239.36	5,004.0	1,617.9	2,187.3	2,720.6	1.15	1.15	Top of Gas
5,854.9	0.33	239.36	5,012.3	1,617.9	2,187.2	2,720.6	1.15	1.15	
5,900.0	0.33	239.36	5,057.5	1,617.7	2,187.0	2,720.3	0.00	0.00	
6,000.0	0.33	239.36	5,157.5	1,617.4	2,186.5	2,719.7	0.00	0.00	
6,100.0	0.33	239.36	5,257.5	1,617.1	2,186.0	2,719.2	0.00	0.00	
6,200.0	0.33	239.36	5,357.5	1,616.9	2,185.5	2,718.6	0.00	0.00	
6,300.0	0.33	239.36	5,457.5	1,616.6	2,185.1	2,718.0	0.00	0.00	
6,400.0	0.33	239.36	5,557.5	1,616.3	2,184.6	2,717.5	0.00	0.00	
6,500.0	0.33	239.36	5,657.5	1,616.0	2,184.1	2,716.9	0.00	0.00	
6,600.0	0.33	239.36	5,757.5	1,615.7	2,183.6	2,716.3	0.00	0.00	
6,700.0	0.33	239.36	5,857.5	1,615.4	2,183.1	2,715.8	0.00	0.00	
6,800.0	0.33	239.36	5,957.5	1,615.1	2,182.6	2,715.2	0.00	0.00	
6,900.0	0.33	239.36	6,057.5	1,614.8	2,182.1	2,714.6	0.00	0.00	
7,000.0	0.33	239.36	6,157.5	1,614.5	2,181.6	2,714.1	0.00	0.00	
7,100.0	0.33	239.36	6,257.5	1,614.2	2,181.1	2,713.5	0.00	0.00	

## Planning Report

<b>Database:</b>	USA EDM 5000 US Multi Users DB	<b>Local Co-ordinate Reference:</b>	Well NP MF11B-3 O04 696 (was 14A-3)
<b>Company:</b>	EnCana Oil & Gas (USA) Inc	<b>TVD Reference:</b>	WELL @ 6044.0ft (Original Well Elev)
<b>Project:</b>	North Piceance	<b>MD Reference:</b>	WELL @ 6044.0ft (Original Well Elev)
<b>Site:</b>	O04 696 (3rd)	<b>North Reference:</b>	True
<b>Well:</b>	NP MF11B-3 O04 696 (was 14A-3)	<b>Survey Calculation Method:</b>	Minimum Curvature
<b>Wellbore:</b>	DD		
<b>Design:</b>	Plan #2		

Planned Survey									
Measured Depth (ft)	Inclination (°)	Azimuth (°)	Vertical Depth (ft)	+N/-S (ft)	+E/-W (ft)	Vertical Section (ft)	Dogleg Rate (°/100ft)	Build Rate (°/100ft)	Comments / Formations
7,200.0	0.33	239.36	6,357.5	1,614.0	2,180.6	2,712.9	0.00	0.00	
7,300.0	0.33	239.36	6,457.4	1,613.7	2,180.2	2,712.4	0.00	0.00	
7,400.0	0.33	239.36	6,557.4	1,613.4	2,179.7	2,711.8	0.00	0.00	
7,500.0	0.33	239.36	6,657.4	1,613.1	2,179.2	2,711.3	0.00	0.00	
7,600.0	0.33	239.36	6,757.4	1,612.8	2,178.7	2,710.7	0.00	0.00	
7,700.0	0.33	239.36	6,857.4	1,612.5	2,178.2	2,710.1	0.00	0.00	
7,800.0	0.33	239.36	6,957.4	1,612.2	2,177.7	2,709.6	0.00	0.00	
7,900.0	0.33	239.36	7,057.4	1,611.9	2,177.2	2,709.0	0.00	0.00	
8,000.0	0.33	239.36	7,157.4	1,611.6	2,176.7	2,708.4	0.00	0.00	
8,100.0	0.33	239.36	7,257.4	1,611.4	2,176.2	2,707.9	0.00	0.00	
8,200.0	0.33	239.36	7,357.4	1,611.1	2,175.8	2,707.3	0.00	0.00	
8,300.0	0.33	239.36	7,457.4	1,610.8	2,175.3	2,706.7	0.00	0.00	
8,400.0	0.33	239.36	7,557.4	1,610.5	2,174.8	2,706.2	0.00	0.00	
8,500.0	0.33	239.36	7,657.4	1,610.2	2,174.3	2,705.6	0.00	0.00	
8,600.0	0.33	239.36	7,757.4	1,609.9	2,173.8	2,705.0	0.00	0.00	
8,700.0	0.33	239.36	7,857.4	1,609.6	2,173.3	2,704.5	0.00	0.00	
8,800.0	0.33	239.36	7,957.4	1,609.3	2,172.8	2,703.9	0.00	0.00	
8,900.0	0.33	239.36	8,057.4	1,609.0	2,172.3	2,703.3	0.00	0.00	
9,000.0	0.33	239.36	8,157.4	1,608.7	2,171.8	2,702.8	0.00	0.00	
9,100.0	0.33	239.36	8,257.4	1,608.5	2,171.4	2,702.2	0.00	0.00	
9,200.0	0.33	239.36	8,357.4	1,608.2	2,170.9	2,701.6	0.00	0.00	
9,300.0	0.33	239.36	8,457.4	1,607.9	2,170.4	2,701.1	0.00	0.00	
9,306.6	0.33	239.36	8,464.0	1,607.9	2,170.3	2,701.0	0.00	0.00	Rollins - O04 696 MF11B-3 BHL (6.13.11)
9,400.0	0.33	239.36	8,557.4	1,607.6	2,169.9	2,700.5	0.00	0.00	
9,456.6	0.33	239.36	8,614.0	1,607.4	2,169.6	2,700.2	0.00	0.00	Drillers TD @ 8614' TVD
9,500.0	0.33	239.36	8,657.4	1,607.3	2,169.4	2,699.9	0.00	0.00	
9,600.0	0.33	239.36	8,757.4	1,607.0	2,168.9	2,699.4	0.00	0.00	
9,700.0	0.33	239.36	8,857.4	1,606.7	2,168.4	2,698.8	0.00	0.00	
9,800.0	0.33	239.36	8,957.4	1,606.4	2,167.9	2,698.2	0.00	0.00	
9,900.0	0.33	239.36	9,057.4	1,606.1	2,167.4	2,697.7	0.00	0.00	
10,000.0	0.33	239.36	9,157.4	1,605.8	2,166.9	2,697.1	0.00	0.00	
10,100.0	0.33	239.36	9,257.4	1,605.6	2,166.5	2,696.5	0.00	0.00	
10,200.0	0.33	239.36	9,357.4	1,605.3	2,166.0	2,696.0	0.00	0.00	
10,300.0	0.33	239.36	9,457.4	1,605.0	2,165.5	2,695.4	0.00	0.00	
10,400.0	0.33	239.36	9,557.4	1,604.7	2,165.0	2,694.8	0.00	0.00	
10,500.0	0.33	239.36	9,657.4	1,604.4	2,164.5	2,694.3	0.00	0.00	
10,600.0	0.33	239.36	9,757.4	1,604.1	2,164.0	2,693.7	0.00	0.00	
10,700.0	0.33	239.36	9,857.4	1,603.8	2,163.5	2,693.1	0.00	0.00	
10,800.0	0.33	239.36	9,957.4	1,603.5	2,163.0	2,692.6	0.00	0.00	
10,842.6	0.33	239.36	10,000.0	1,603.4	2,162.8	2,692.3	0.00	0.00	Permit TD @ 10000' TVD

## Planning Report

<b>Database:</b>	USA EDM 5000 US Multi Users DB	<b>Local Co-ordinate Reference:</b>	Well NP MF11B-3 O04 696 (was 14A-3)
<b>Company:</b>	EnCana Oil & Gas (USA) Inc	<b>TVD Reference:</b>	WELL @ 6044.0ft (Original Well Elev)
<b>Project:</b>	North Piceance	<b>MD Reference:</b>	WELL @ 6044.0ft (Original Well Elev)
<b>Site:</b>	O04 696 (3rd)	<b>North Reference:</b>	True
<b>Well:</b>	NP MF11B-3 O04 696 (was 14A-3)	<b>Survey Calculation Method:</b>	Minimum Curvature
<b>Wellbore:</b>	DD		
<b>Design:</b>	Plan #2		

Targets									
Target Name	Dip Angle	Dip Dir.	TVD	+N/-S	+E/-W	Northing	Easting	Latitude	Longitude
- hit/miss target	(°)	(°)	(ft)	(ft)	(ft)	(ft)	(ft)		
- Shape									
O04 696 MF11B-3 TGT - plan hits target center - Point	0.00	0.00	4,984.0	1,617.9	2,187.3	1,637,582.23	2,266,988.68	39° 33' 18.51 N	108° 6' 0.14 W
O04 696 MF11B-3 BHL - plan hits target center - Rectangle (sides W30.0 H50.0 D0.0)	0.00	0.00	8,464.0	1,607.9	2,170.3	1,637,572.67	2,266,971.44	39° 33' 18.41 N	108° 6' 0.36 W

Formations					
Measured Depth	Vertical Depth	Name	Lithology	Dip	Dip Direction
(ft)	(ft)			(°)	(°)
5,806.5	4,964.0	Williams Fork		0.00	
5,846.5	5,004.0	Top of Gas		0.00	
9,306.6	8,464.0	Rollins		0.00	

Plan Annotations				
Measured Depth	Vertical Depth	Local Coordinates		Comment
(ft)	(ft)	+N/-S (ft)	+E/-W (ft)	
200.0	200.0	0.0	0.0	KOP @ 200'
1,471.8	1,379.9	242.7	328.0	EOB; Inc=38.15°
4,554.7	3,804.1	1,375.2	1,859.3	Start Drop -3.00
5,826.5	4,984.0	1,617.9	2,187.3	EOD; Inc=0°
9,456.6	8,614.0	1,617.9	2,187.2	Drillers TD @ 8614' TVD
10,842.6	10,000.0	1,607.9	2,170.3	Permit TD @ 10000' TVD