

SINGLE INDUCTION LOG

Company	Pioneer Natural Resources	Company	Pioneer Natural Resources
Well	Brake Handle 24-22	Well	Brake Handle 24-22
Field	Purgatoire River	Field	Purgatoire River
County	Las Animas	County	Las Animas
State	Colorado	State	Colorado
Location:	API #: 05 071 09659-00 658' FSL & 2002' FWL	Other Services	CDNL
SEC 22 TWP 32S RGE 67W			
Permanent Datum	Ground Level	Elevation	7801'
Log Measured From	Kelly Bushing 12' AGL		
Drilling Measured From	Kelly Bushing		
Date	6-8-11		6-8-11
Run Number	One		Two
Depth Driller	2986'		2986'
Depth Logger	2240'		2957'
Bottom Logged Interval	2236'		2955'
Top Log Interval	Surface Casing		5 1/2" Casing
Casing Driller	8 5/8" @ 832'		2238'
Casing Logger	833'		2238'
Bit Size	7 7/8"		7 7/8"
Type Fluid in Hole	Water		Water
Density / Viscosity	///		///
pH / Fluid Loss	///		///
Source of Sample	///		///
Rm @ Meas. Temp	///		///
Rmf @ Meas. Temp	///		///
Rmc @ Meas. Temp	///		///
Source of Rmf / Rmc	///		///
Rm @ BHT	///		///
Time Circulation Stopped	4:15 P.M.		4:15 P.M.
Time Logger on Bottom	11:00 P.M.		4:15 A.M.
Maximum Recorded Temperature	80 DEG F		///
Equipment Number	T590		T590
Location	Trinidad		Trinidad
Recorded By	C. Sisneros		C. Sisneros
Witnessed By	Mr. Derrick Berry		Mr. Derrick Berry

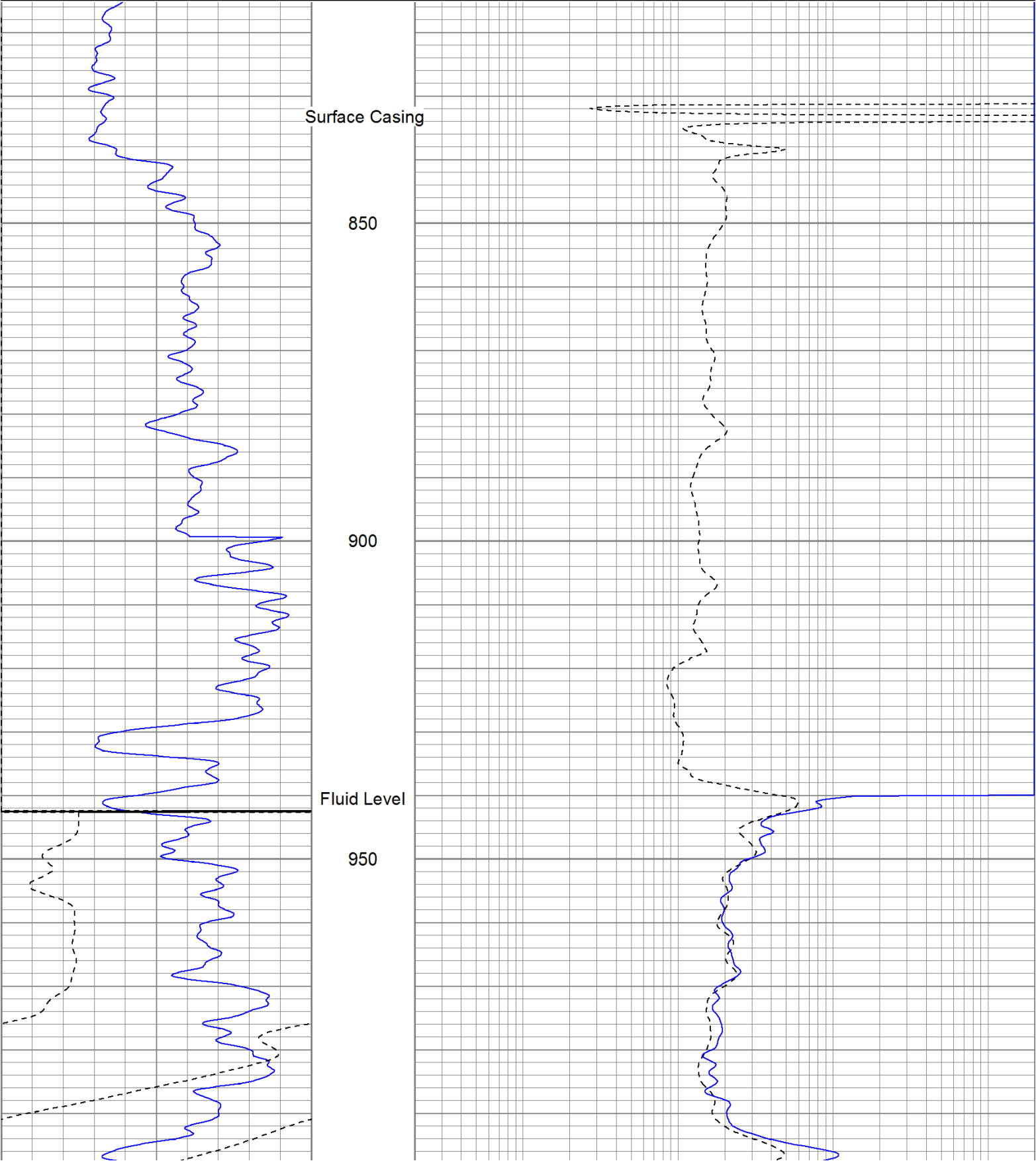
<<< Fold Here >>>

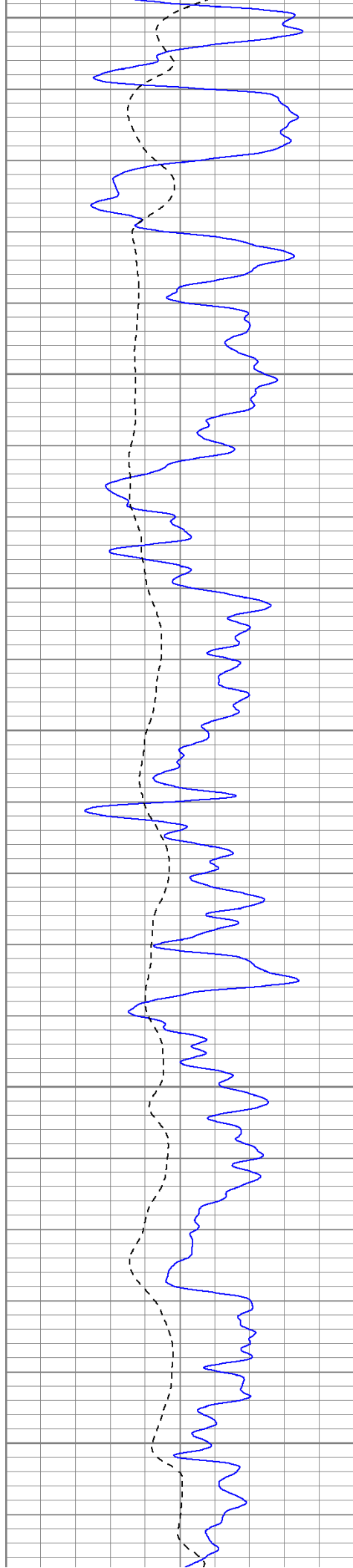
All interpretations are opinions based on inferences from electrical or other measurements and we cannot and do not guarantee the accuracy or correctness of any interpretation, and we shall not, except in the case of gross or willful negligence on our part, be liable or responsible for any loss, costs, damages, or expenses incurred or sustained by anyone resulting from any interpretation made by any of our officers, agents or employees. These interpretations are also subject to our general terms and conditions set out in our current Price Schedule.

Comments

Database File:	brakehandle.db
Dataset Pathname:	pass2sil
Presentation Format:	iel
Dataset Creation:	Sun Jun 12 18:26:41 2011
Charted by:	Depth in Feet scaled 1:240

0	GR (GAPI)	200	0.2	DIR (Ohm-m)	2000
-200	SP (mV)	0	0.2	SN (Ohm-m)	2000





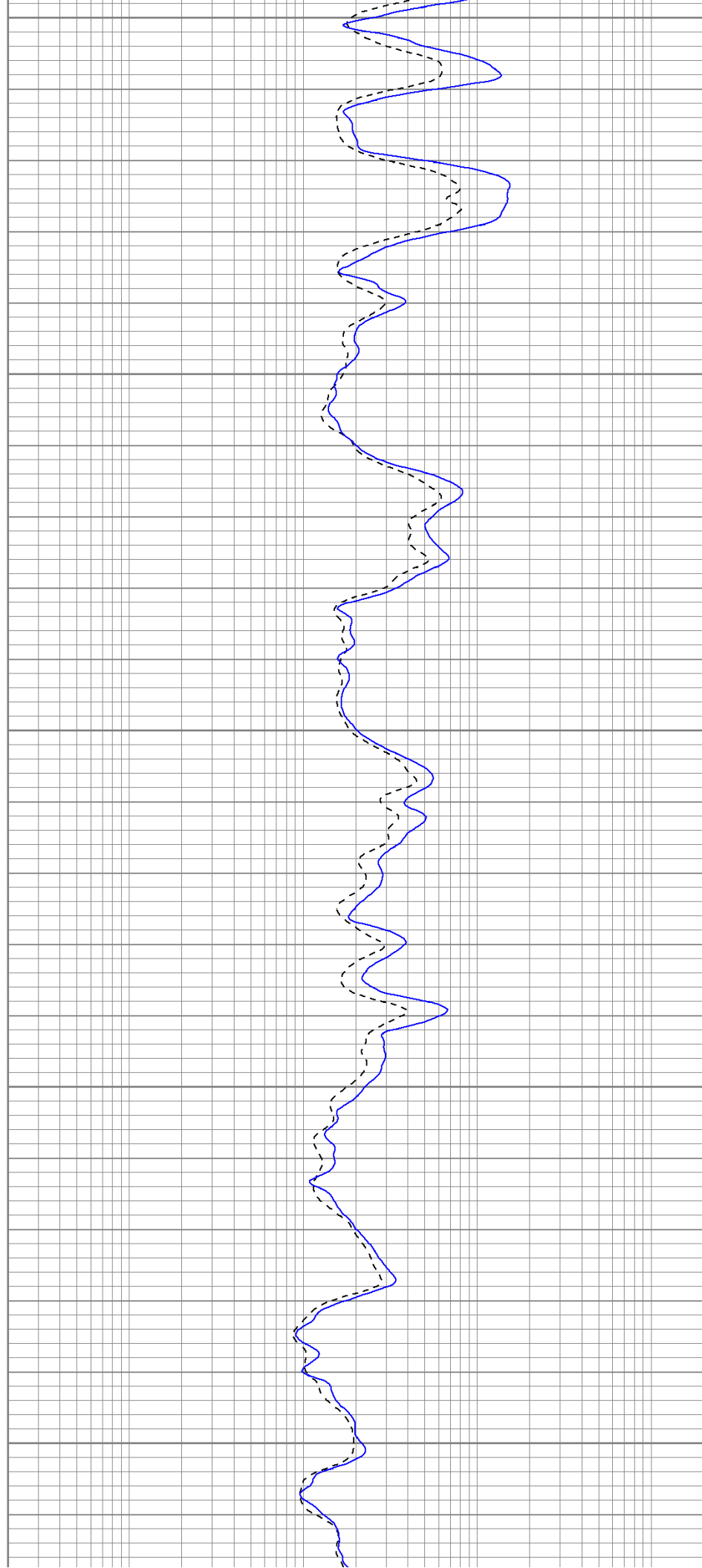
1000

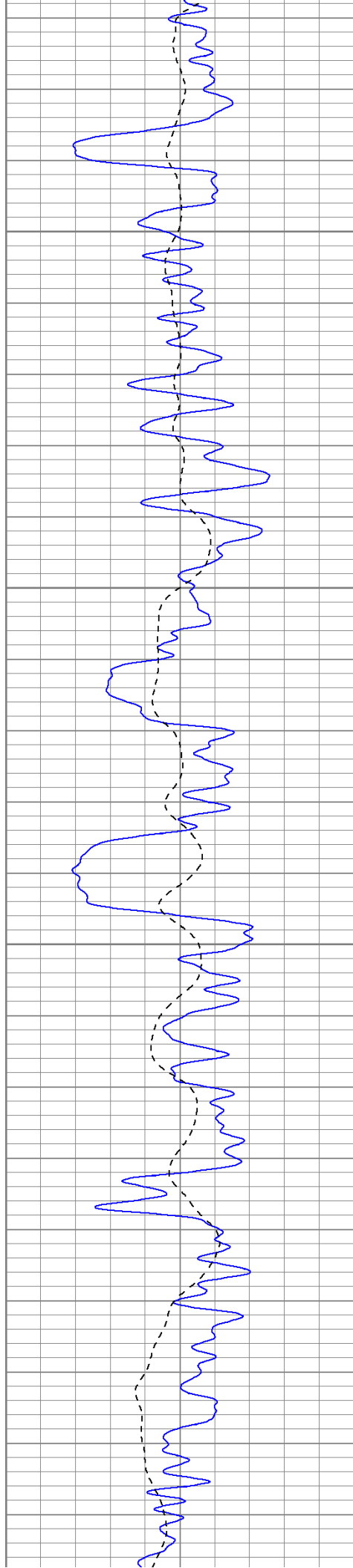
1050

1100

1150

1200



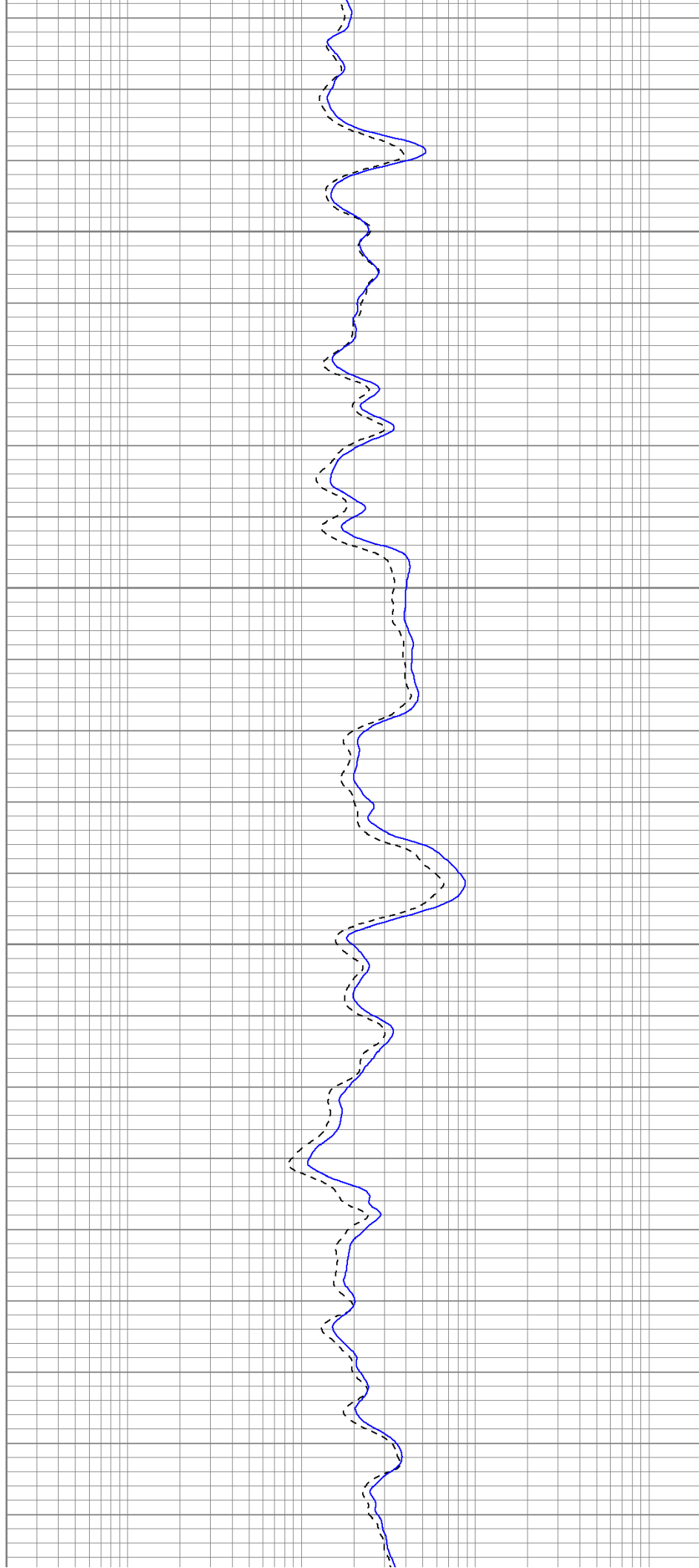


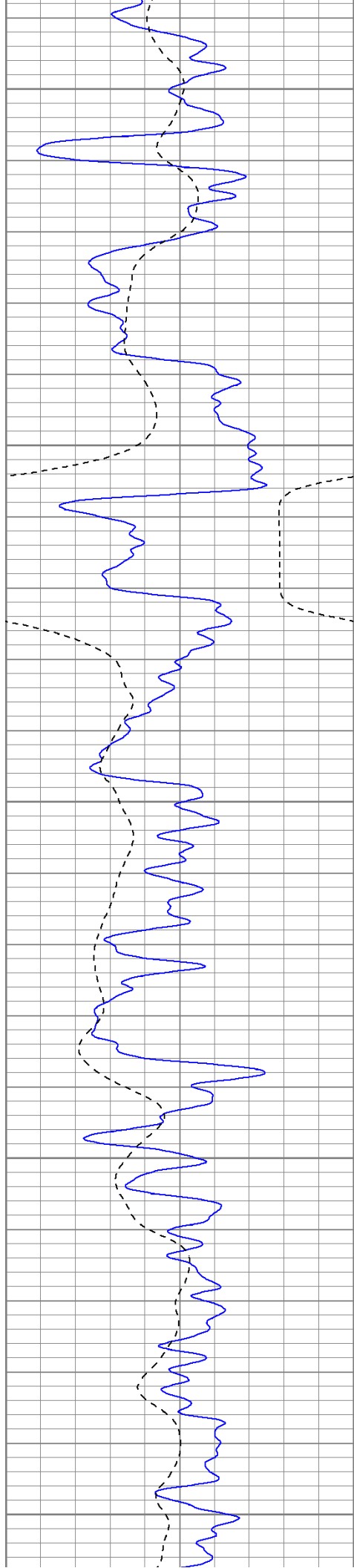
1250

1300

1350

1400





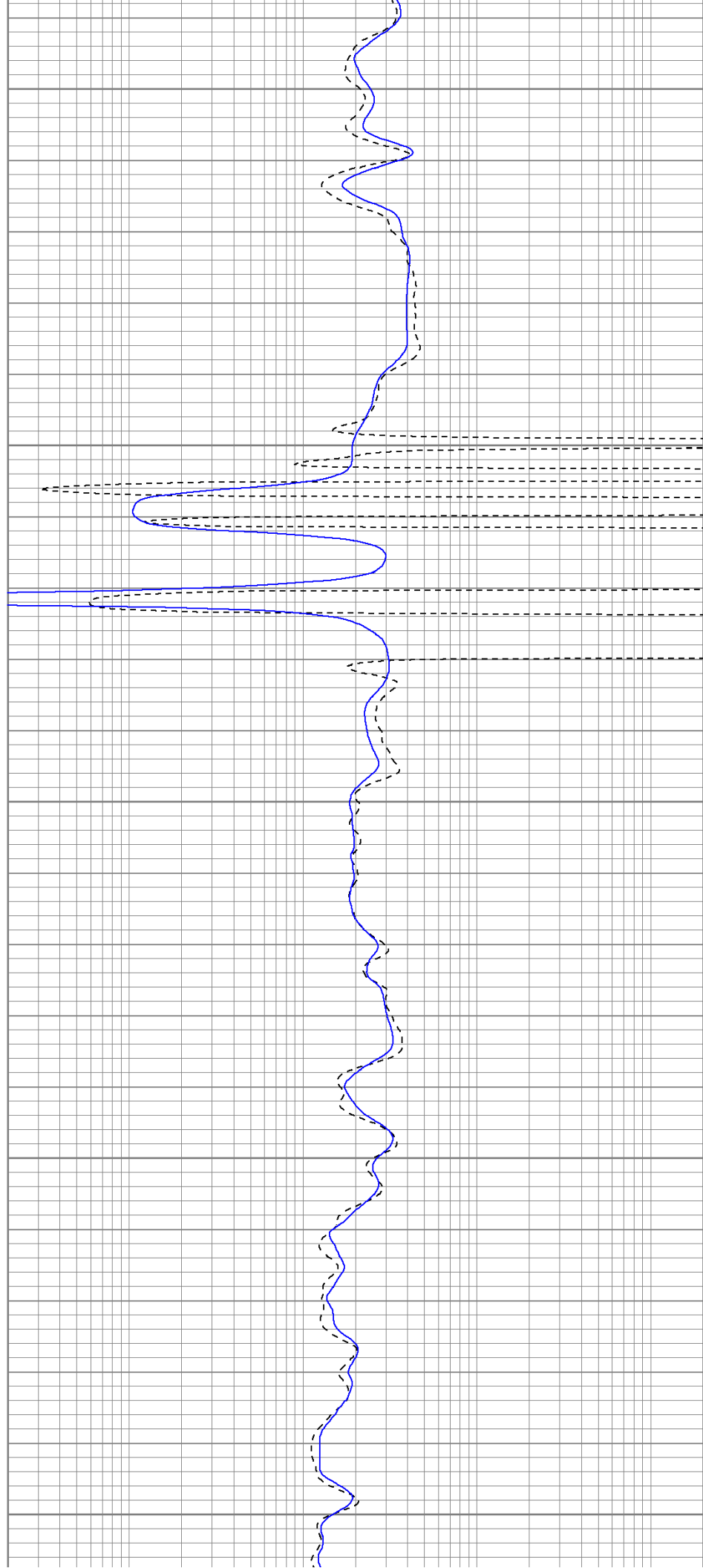
1450

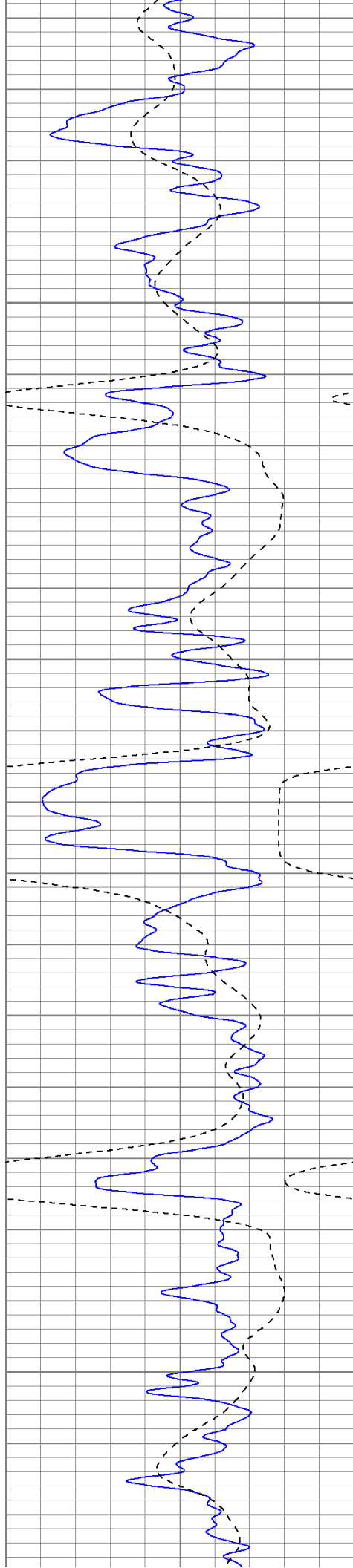
1500

1550

1600

1650



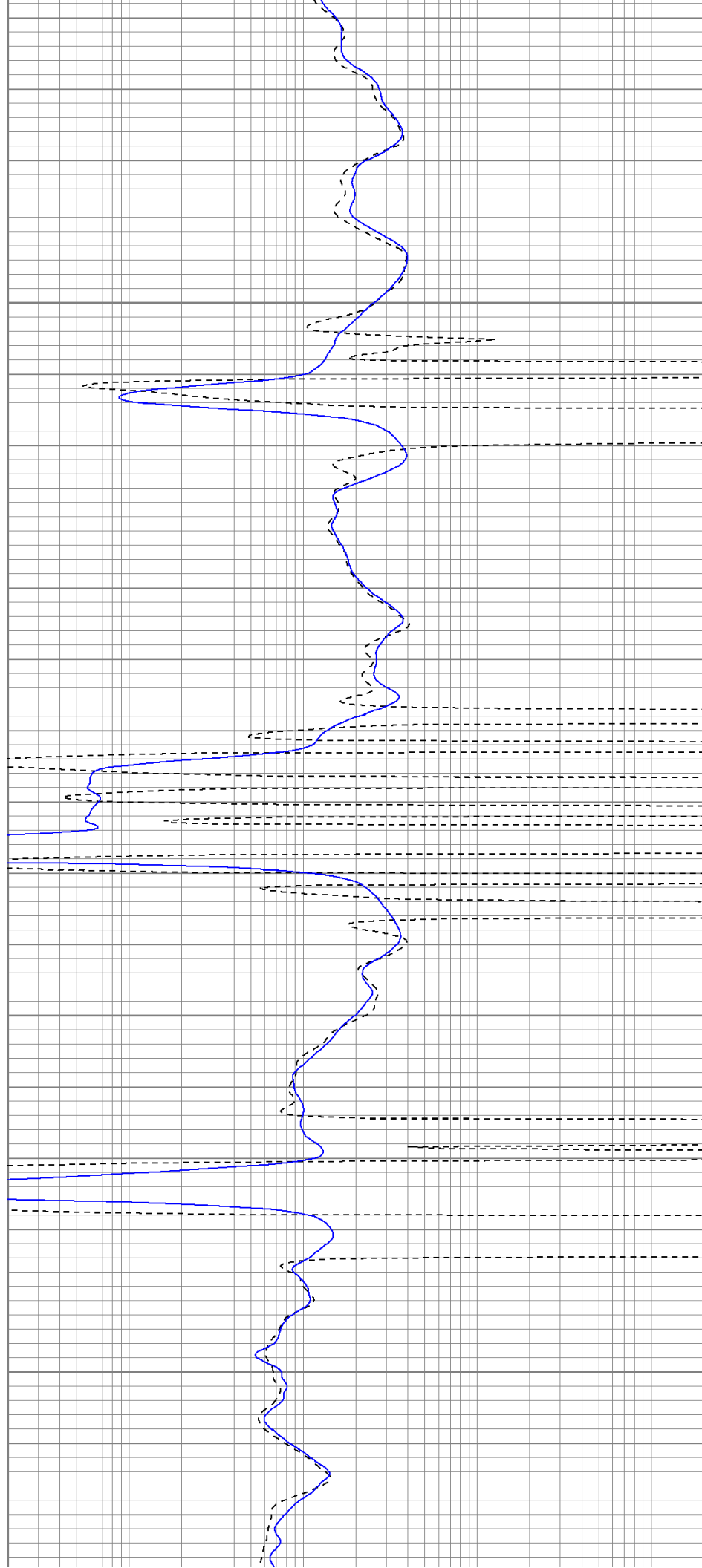


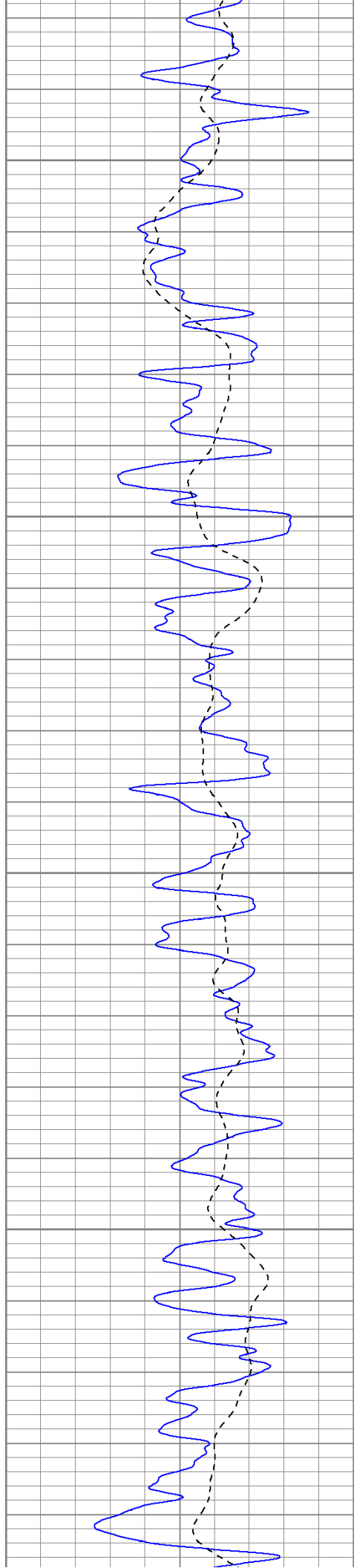
1700

1750

1800

1850



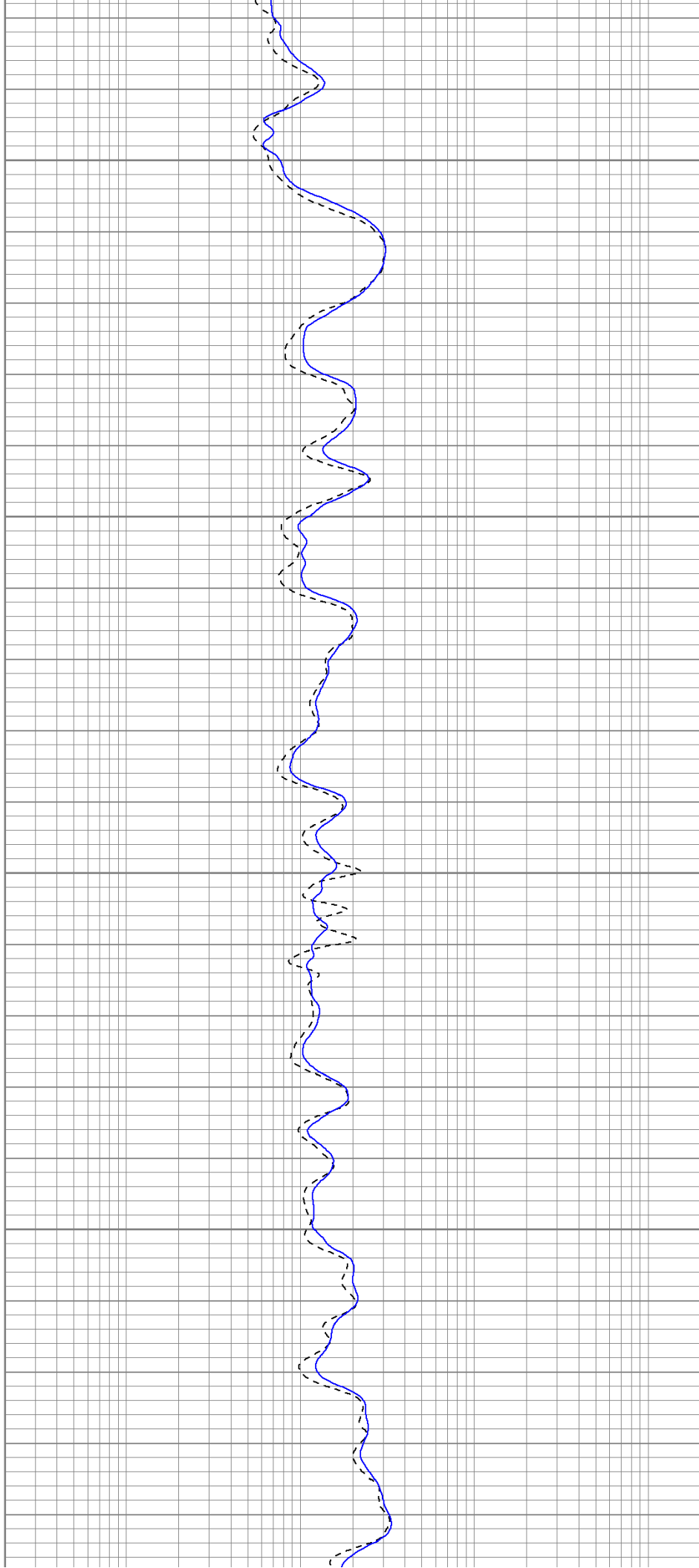


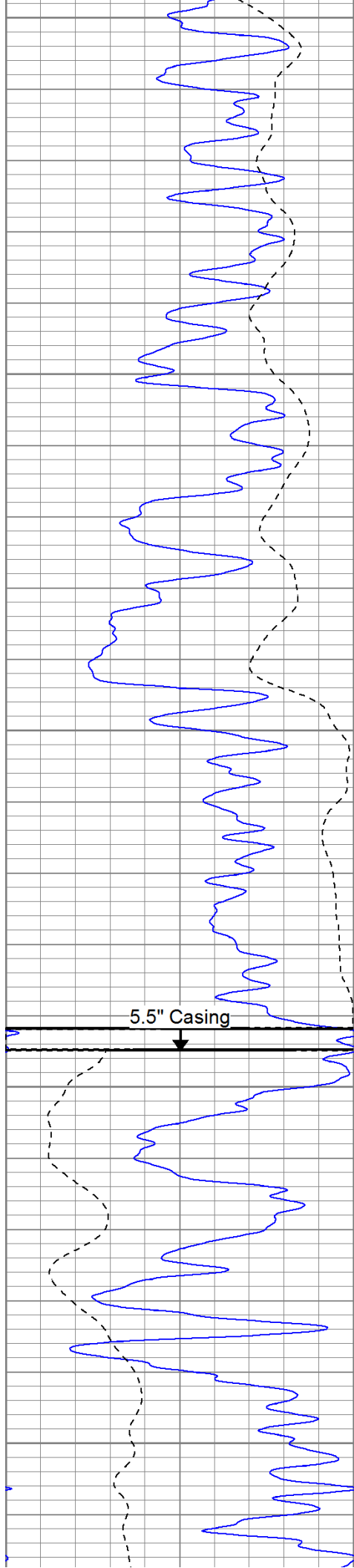
1900

1950

2000

2050





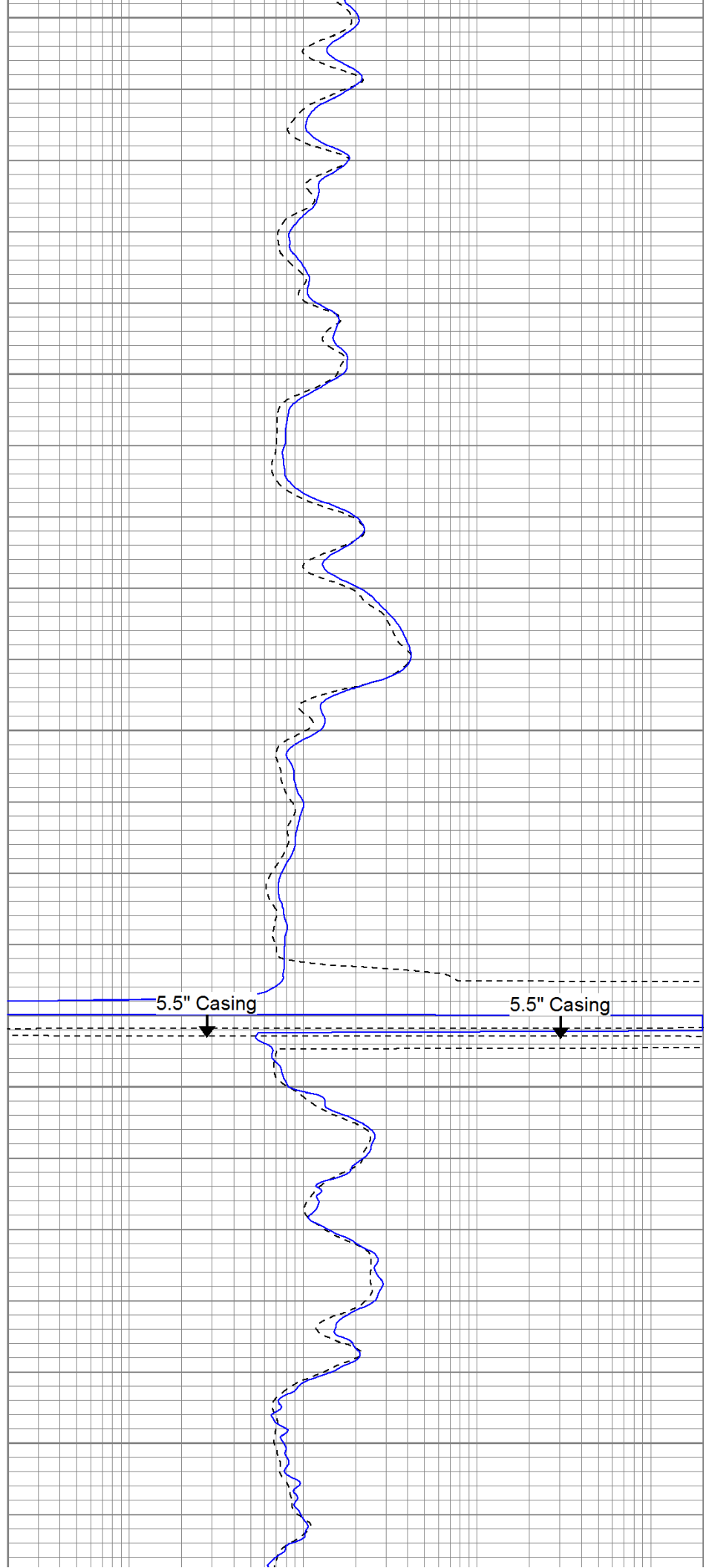
2100

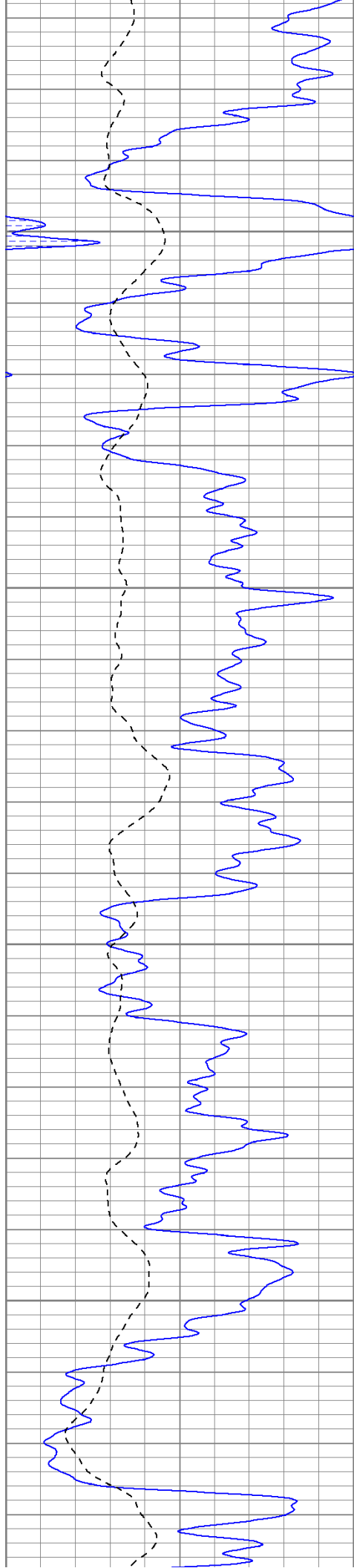
2150

2200

2250

2300



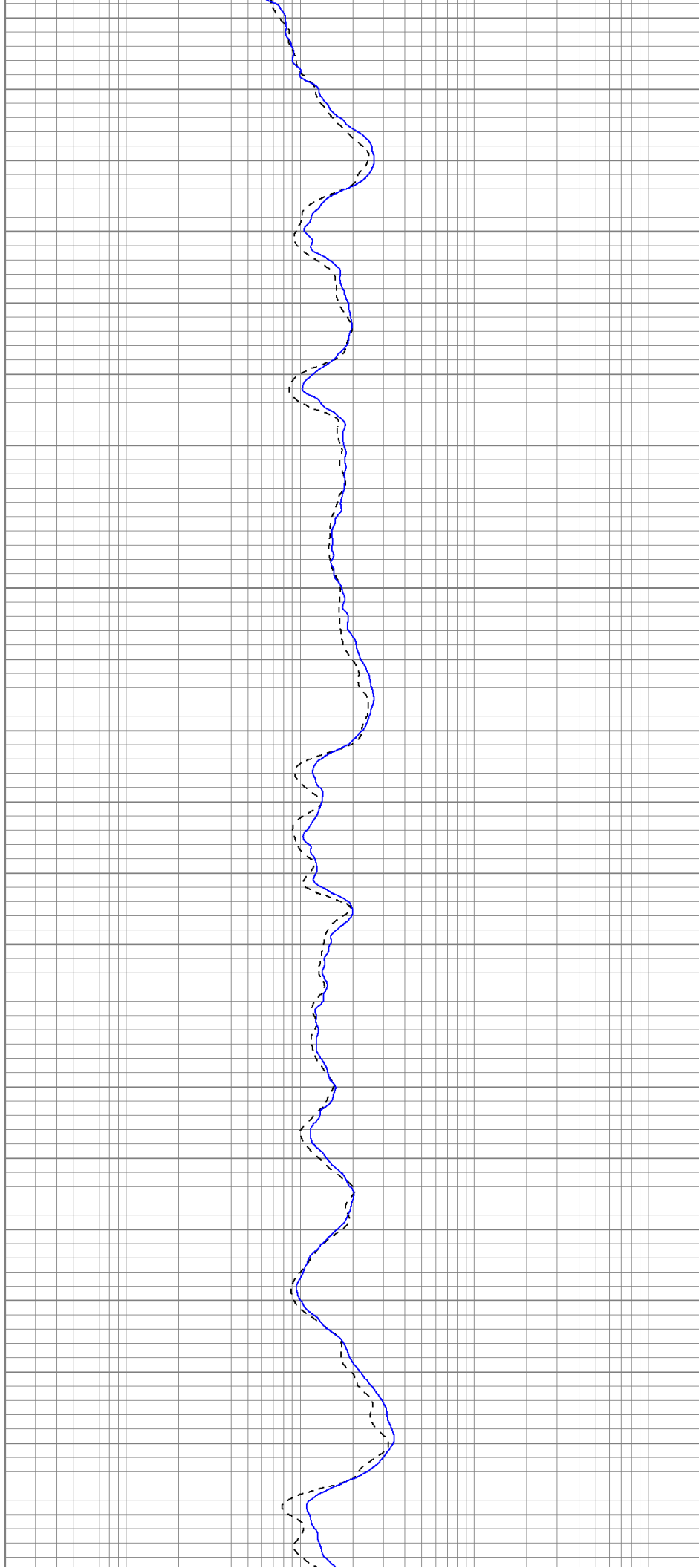


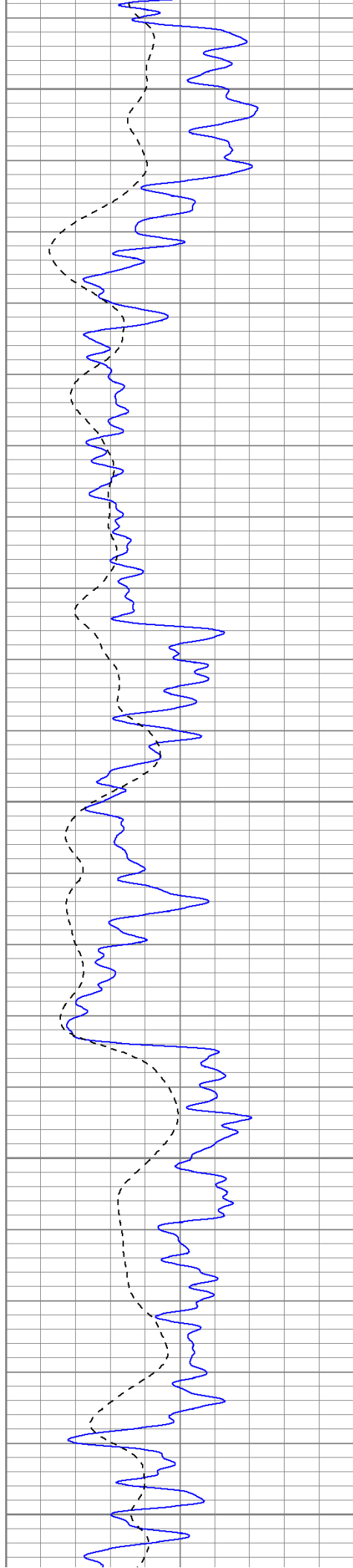
2350

2400

2450

2500





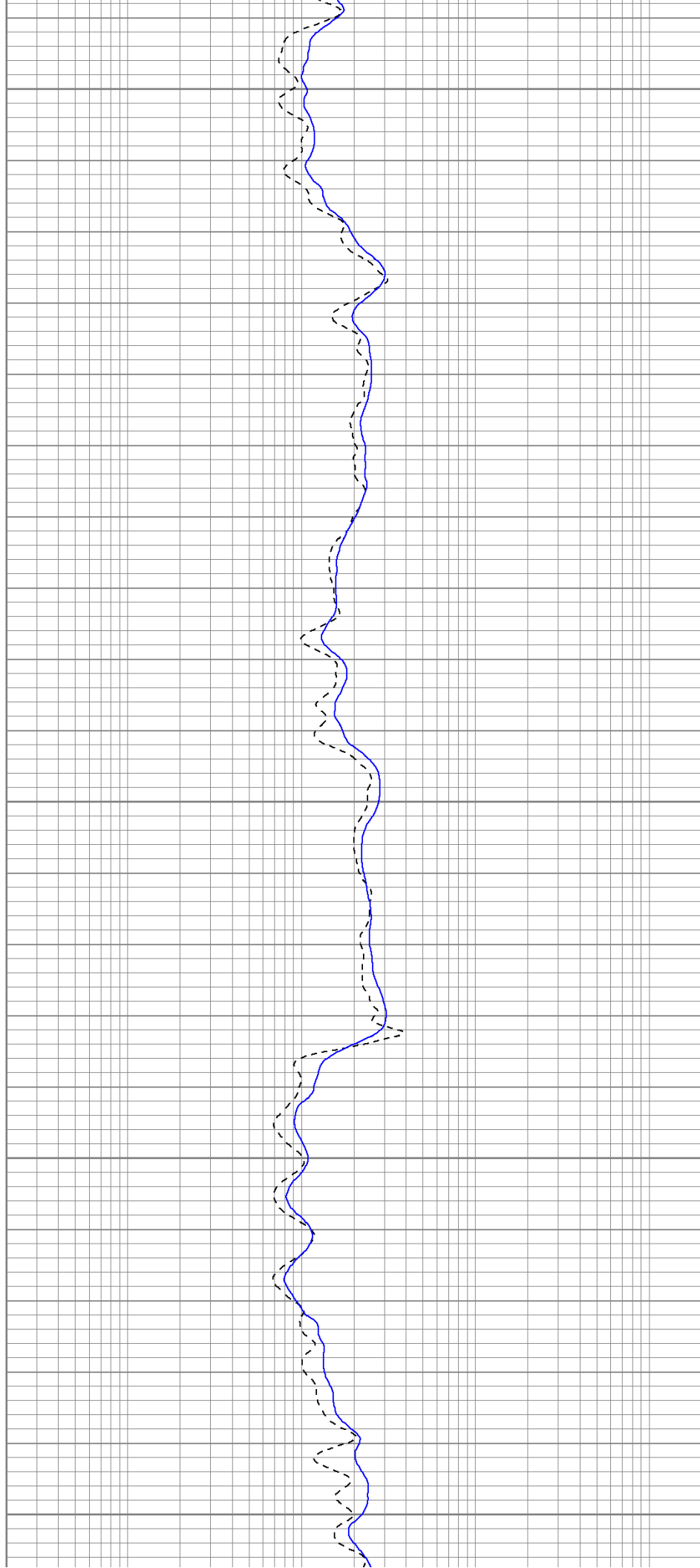
2550

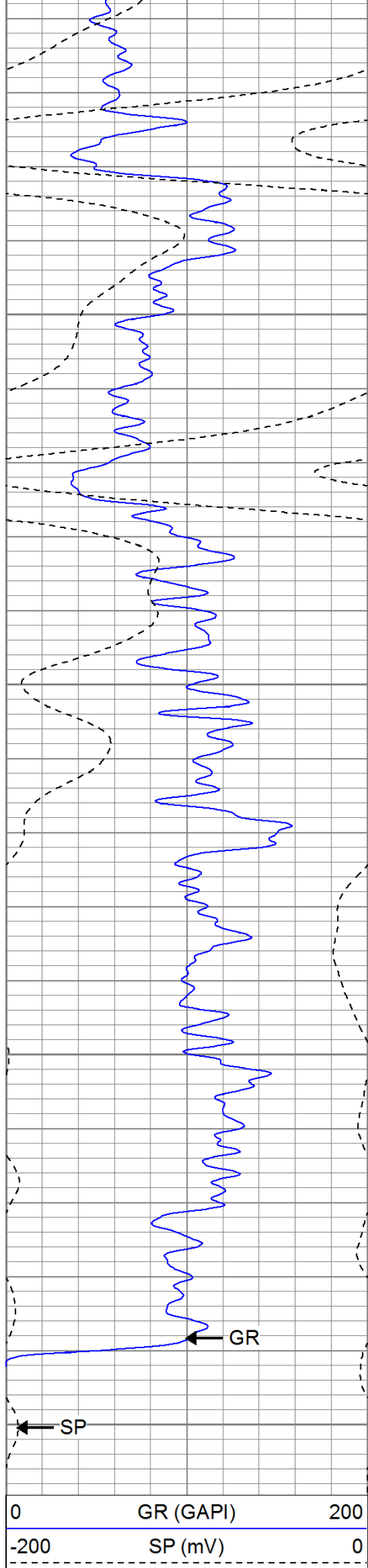
2600

2650

2700

2750



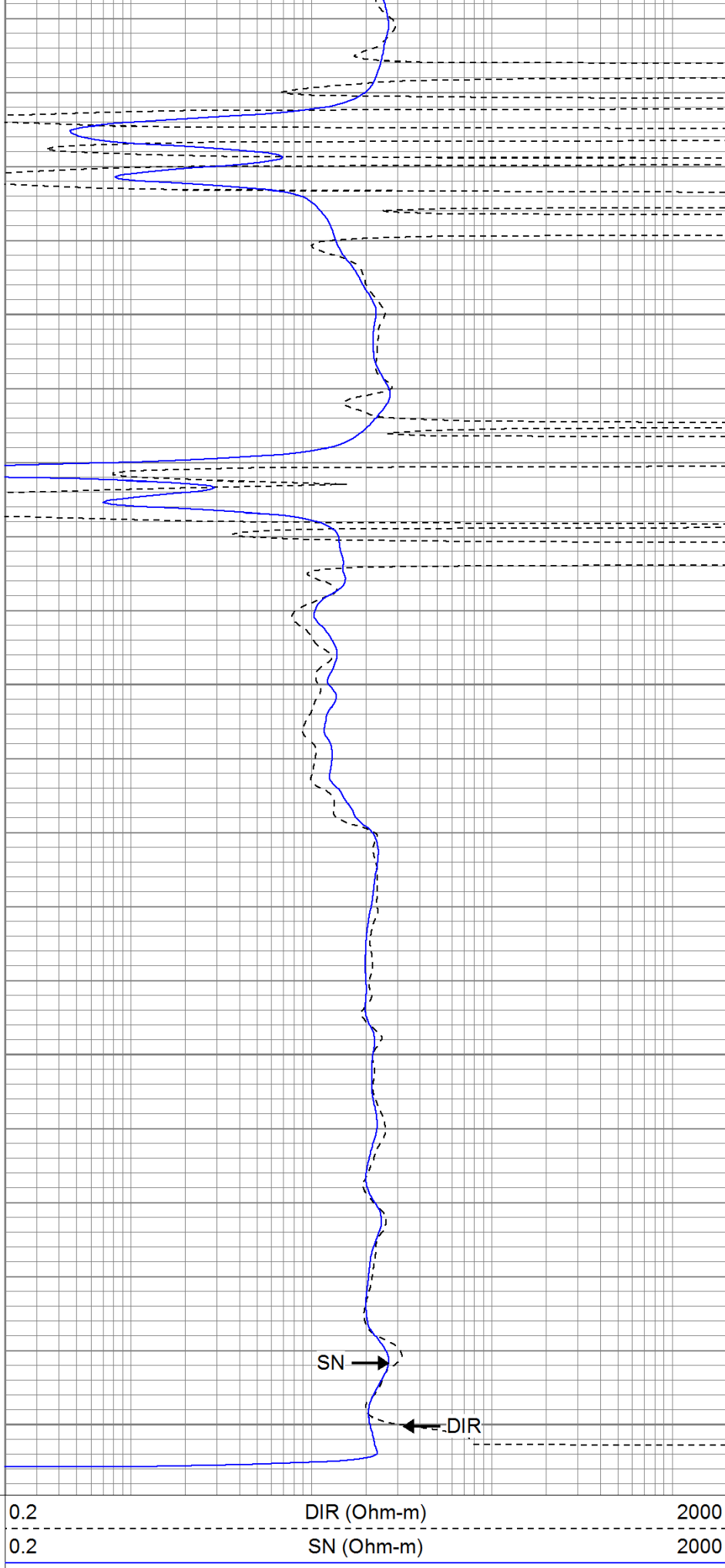


2800

2850

2900

2950

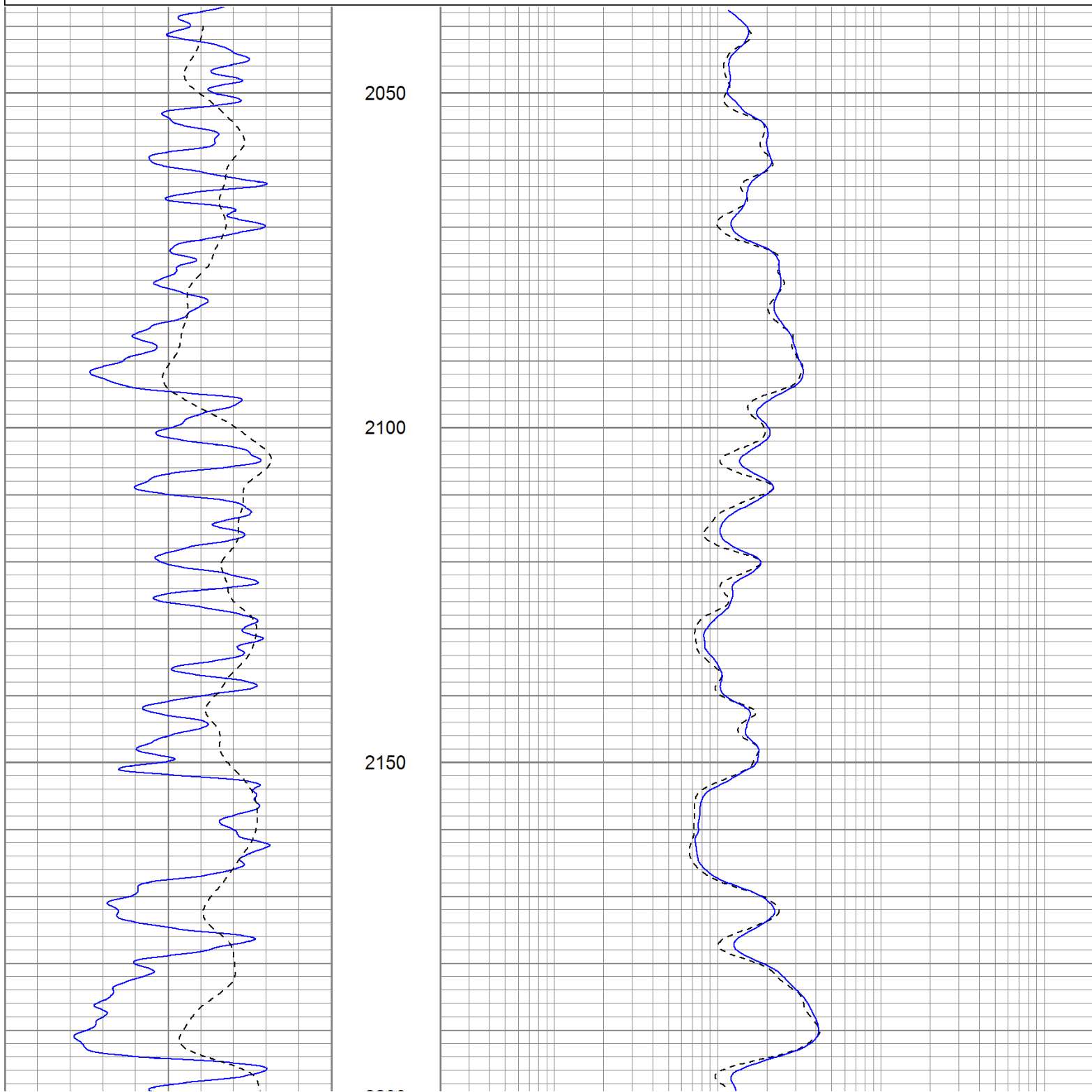


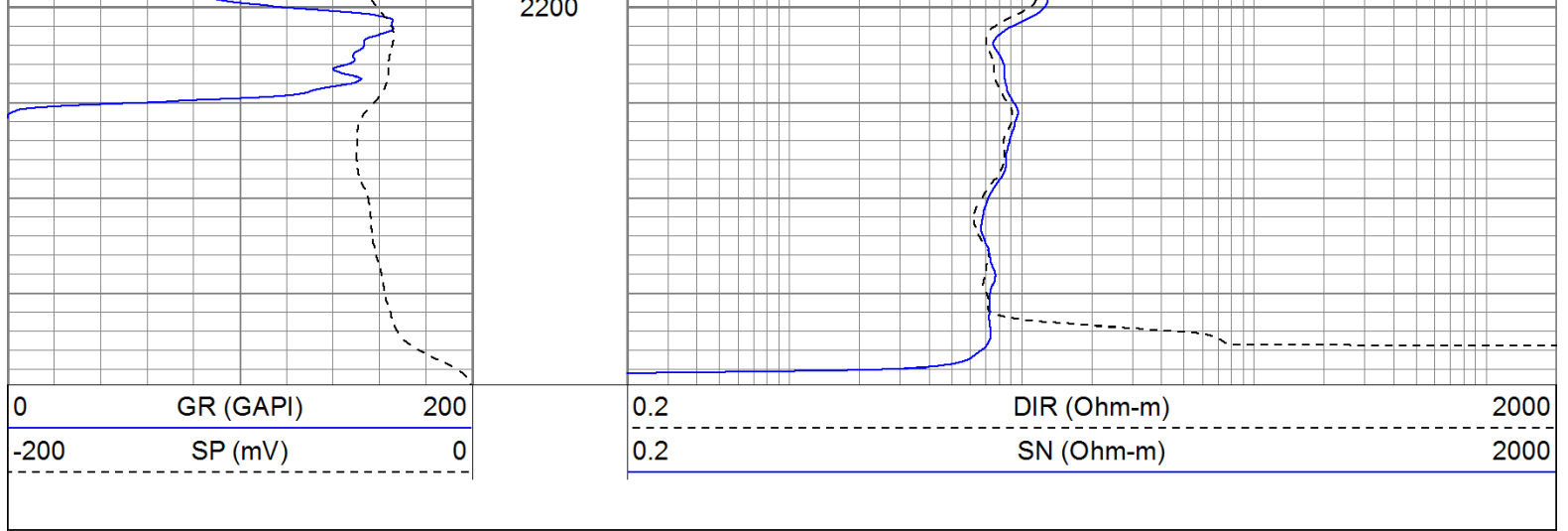
Repeat Pass

Database File: brakehandle.db
 Dataset Pathname: pass1.1
 Presentation Format: iel
 Dataset Creation: Sun Jun 12 19:23:40 2011 by Calc Open-Cased 110302
 Charted by: Depth in Feet scaled 1:240

0	GR (GAPI)	200
-200	SP (mV)	0

0.2	DIR (Ohm-m)	2000
0.2	SN (Ohm-m)	2000





Calibration Report

Database File: brakehandle.db
 Dataset Pathname: pass1
 Dataset Creation: Wed Jun 08 23:07:30 2011 by Log Open-Cased 110302

Induction Tool Calibration Report

Serial Number: 701
 Tool Model: Probe
 Downhole Cal Performed: Wed Jun 08 22:14:25 2011
 Surface Cal Performed: Wed Jun 08 22:14:40 2011
 After Survey Verification Performed:

Surface Calibration:	Air	Loop	
Conductivity Reference:	0.000	500.000	mmho
Conductivity Reading:	0.006	0.644	V
Internal Reference:	Zero	Cal	
Conductivity Reference:	0.000	500.000	mmho
Conductivity Reading:	0.007	0.643	V

Downhole Calibration:	Internal Zero	Internal Cal	
Conductivity Reference:	0.703	499.163	mmho
Conductivity Reading:	0.000	0.000	V
Short Normal Reference:	0.000	20.000	Ohm-m
Short Normal Reading:	0.005	0.214	V

Results:	Gain	Offset
Loop Conductivity:	783.886	-4.674
Downhole Correction:	1.000	0.000
Short Normal Resistivity:	95.281	-0.432

After Survey Verification	Internal Zero	Internal Cal	
Conductivity Reading:	0.000	0.000	V
Conductivity Result:	0.000	0.000	mmho
Short Normal Reading:	0.000	0.000	V
Short Normal Result:	0.000	0.000	Ohm-m

Compensated Density Calibration Report

Serial-Model: 901-2.75POH
 Source / Verifier: /
 Master Calibration Performed: Wed Jun 08 09:11:26 2011
 Before Survey Verification Performed:
 After Survey Verification Performed:


Master Calibration

Density

Far Detector

Near Detector

Magnesium	1.710	g/cc	1001.79	578.48	cps
Aluminum	2.590	g/cc	180.36	300.39	cps
Spine Angle = 69.08		Density/Spine Ratio = 0.479			
	Size		Reading		
Small Ring	8.00	in	2.50	V	
Large Ring	16.00	in	4.57	V	
Before Survey Verification					
	Target		Measured		
		g/cc			g/cc
		g/cc			g/cc
		g/cc			g/cc
After Survey Verification					
	Target		Measured		
		g/cc			g/cc
		g/cc			g/cc
		g/cc			g/cc
Neutron Calibration Report					
Serial Number:		803			
Tool Model:		2.75POH			
Performed:		Wed Jun 08 13:12:55 2011			
Calibrator Value:		1	NAPI		
Calibrator Reading:		1	cps		
Sensitivity:		1	NAPI/cps		
Gamma Ray Calibration Report					
Serial Number:		804			
Tool Model:		2.75POH			
Performed:		Wed Jun 08 14:13:25 2011			
Calibrator Value:		1.0	GAPI		
Background Reading:		0.0	cps		
Calibrator Reading:		1.0	cps		
Sensitivity:		0.8000	GAPI/cps		

Sensor	Offset (ft)	Schematic	Description	Len (ft)	OD (in)	Wt (lb)
GR	29.58		None	0.75	1.50	5.00
			GR-2.75POH (804) Probe 2.75" Probe Open Hole Gamma Ray	3.73	2.75	43.00
NEU	24.04		NEU-2.75POH (803) Probe Epithermal	4.75	2.75	58.00

