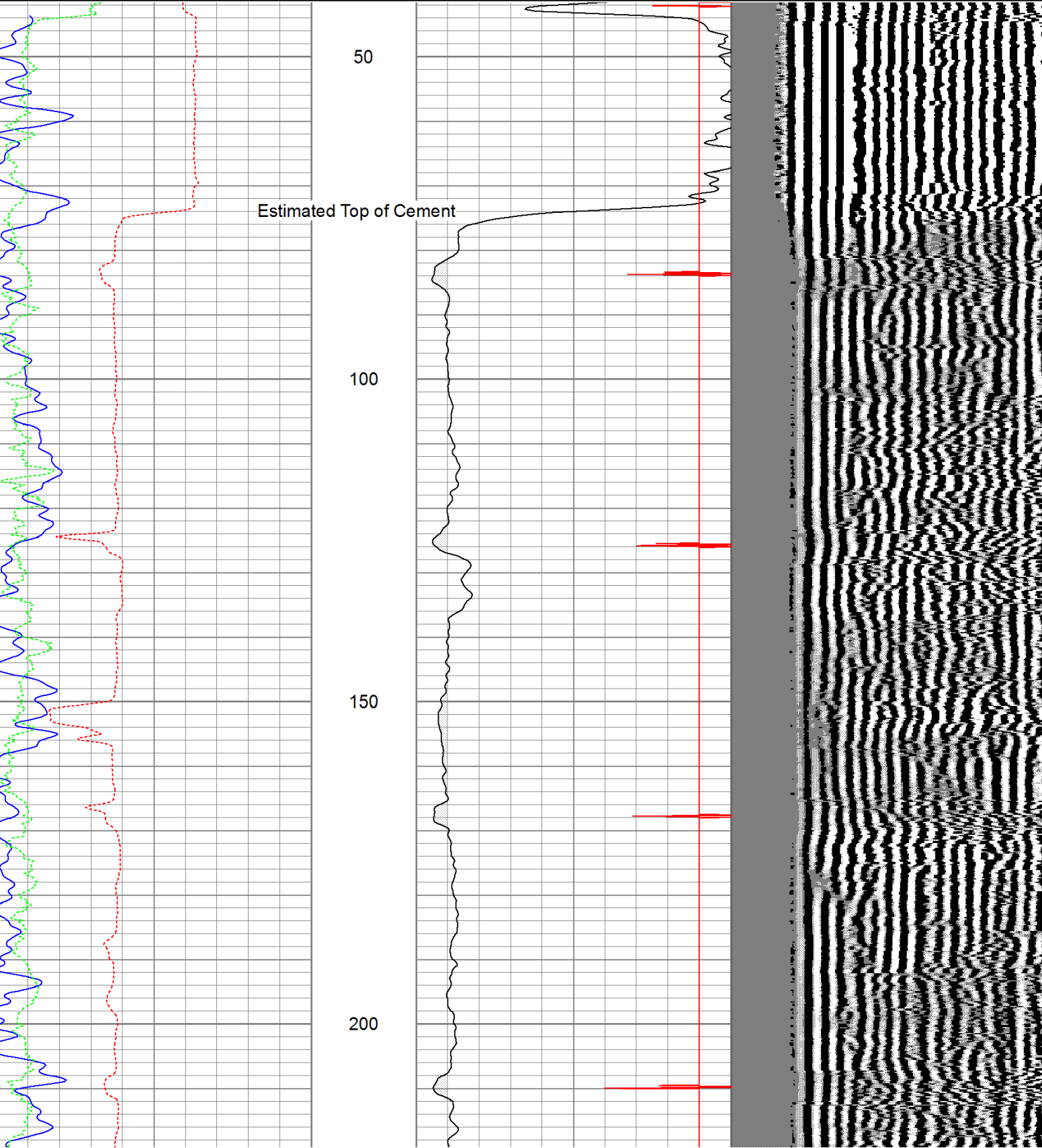


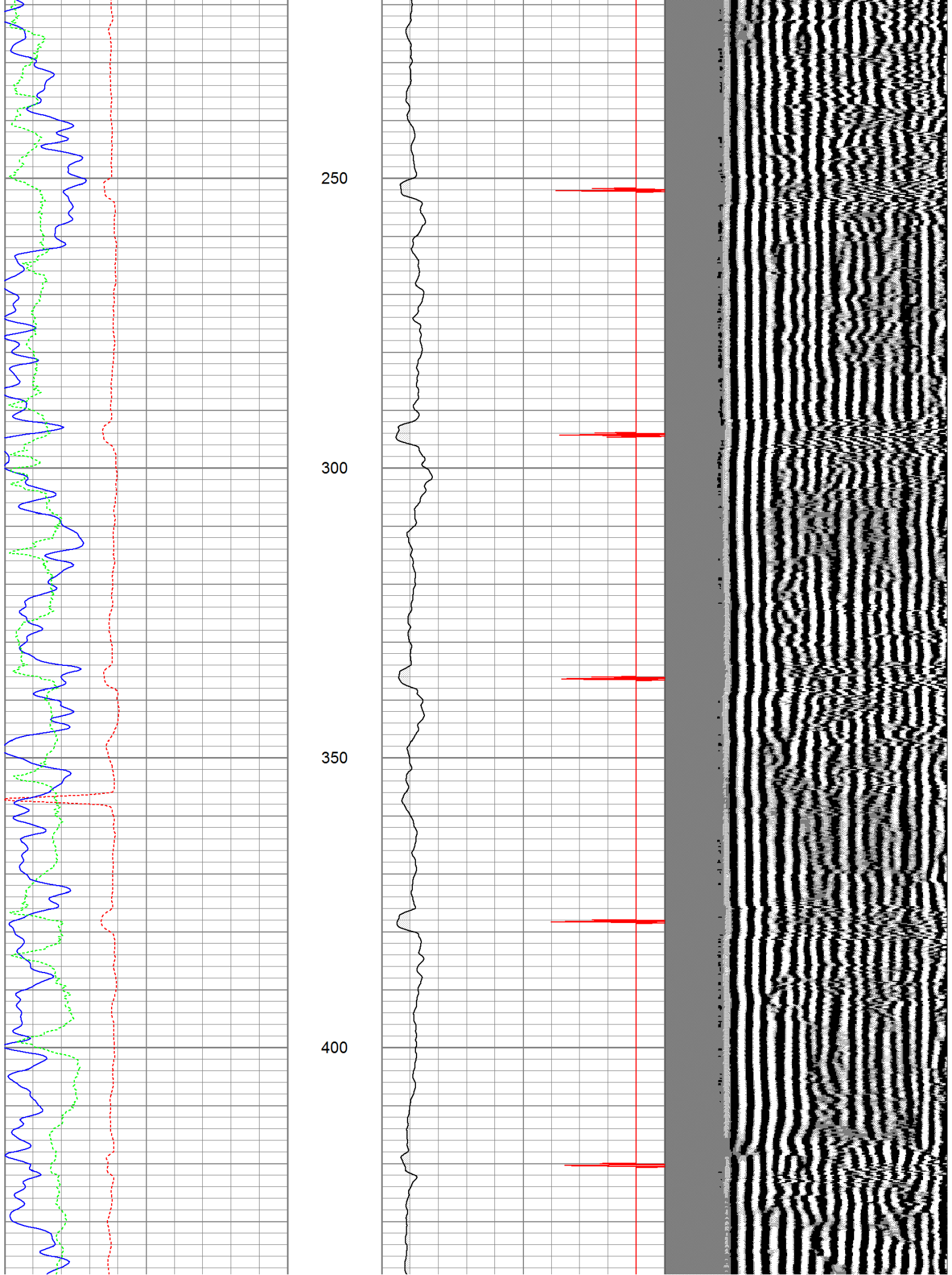
<<< Fold Here >>>
All interpretations are opinions based on inferences from electrical or other measurements and we cannot and do not guarantee the accuracy or correctness of any interpretation, and we shall not, except in the case of gross or willful negligence on our part, be liable or responsible for any loss, costs, damages, or expenses incurred or sustained by anyone resulting from any interpretation made by any of our officers, agents or employees. These interpretations are also subject to our general terms and conditions set out in our current Price Schedule.
<b>Comments</b>



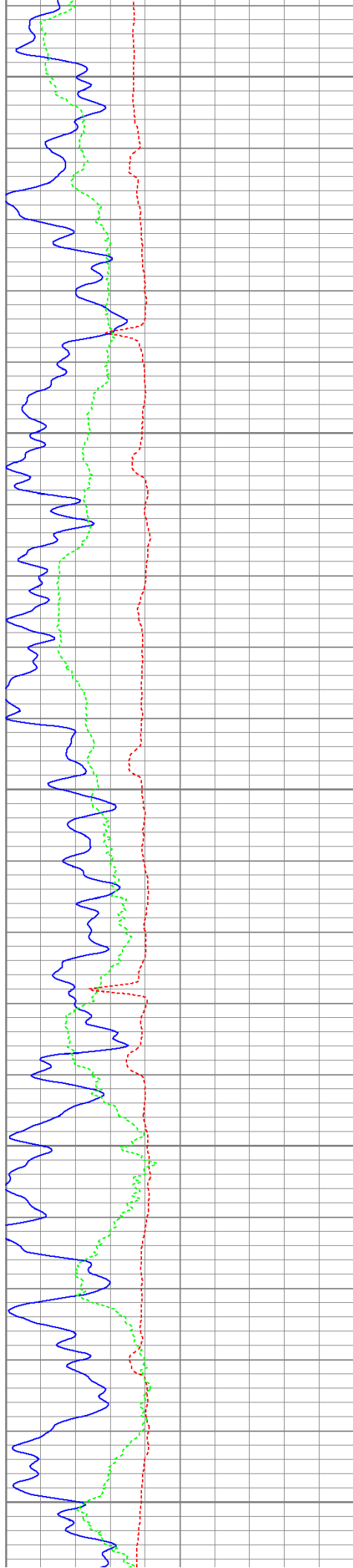
Database File: brake handle 24-22.db  
Dataset Pathname: pass3  
Presentation Format: cbldig  
Dataset Creation: Wed Jun 22 18:13:12 2011 by Log Std Casedhole 10121  
Charted by: Depth in Feet scaled 1:240

400	Travel Time (usec)	200	0	Amplitude (mV)	100	200	Variable Density	1200
0	GR (GAPI)	200	9	Collar Locator	-1			
0	DEVI (°)	10						









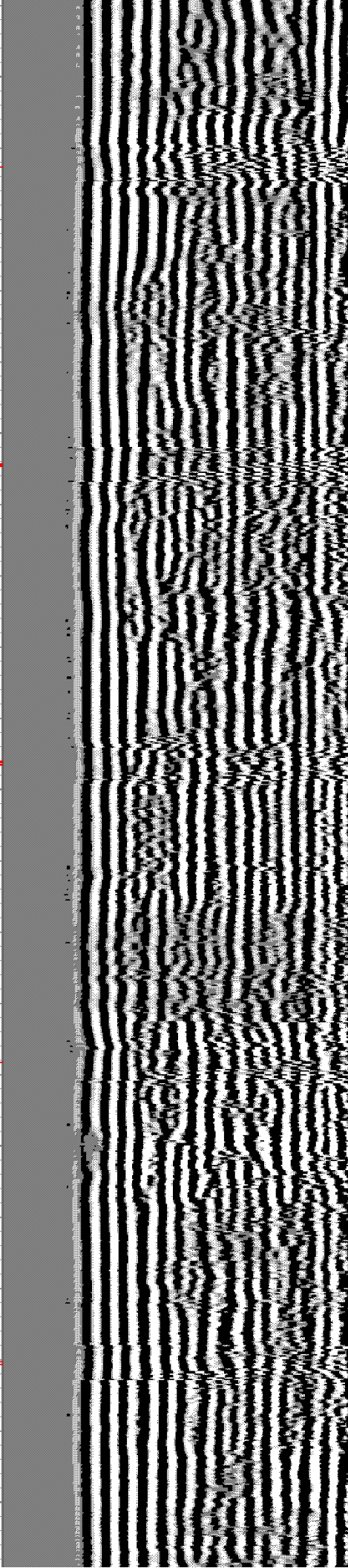
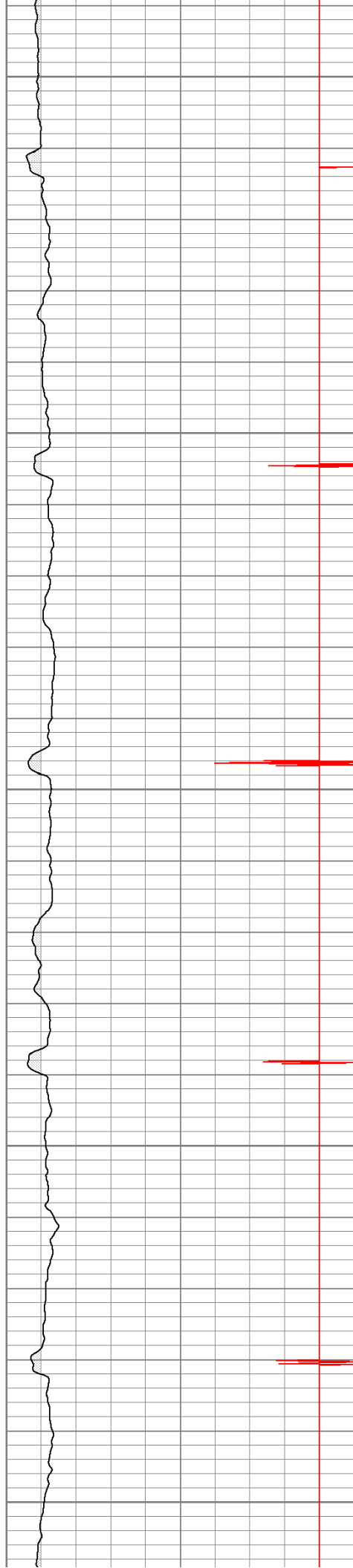
450

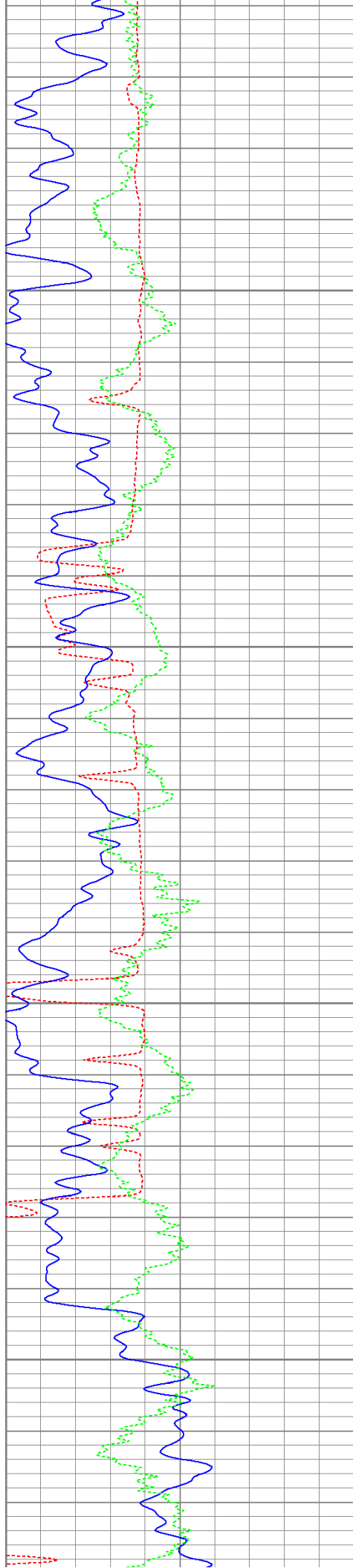
500

550

600

650



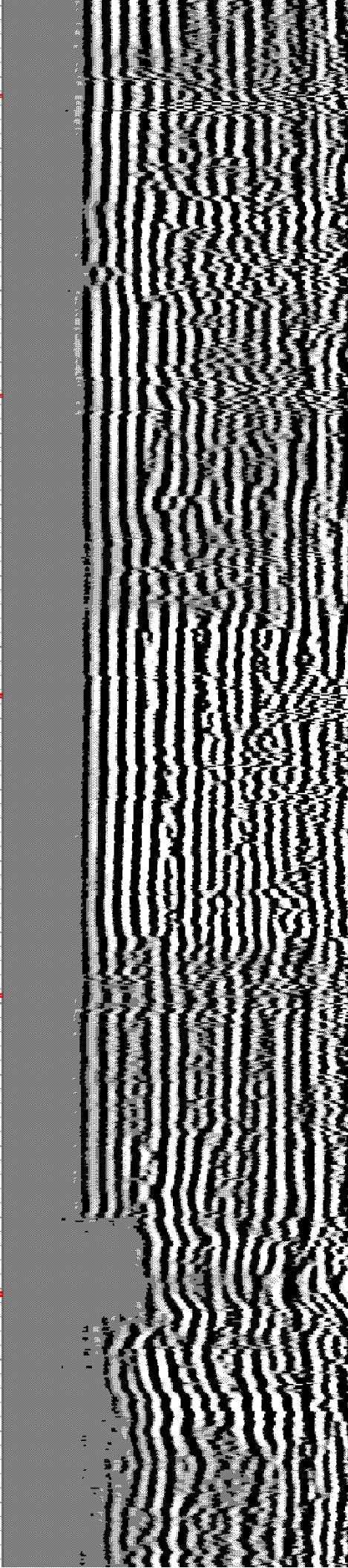
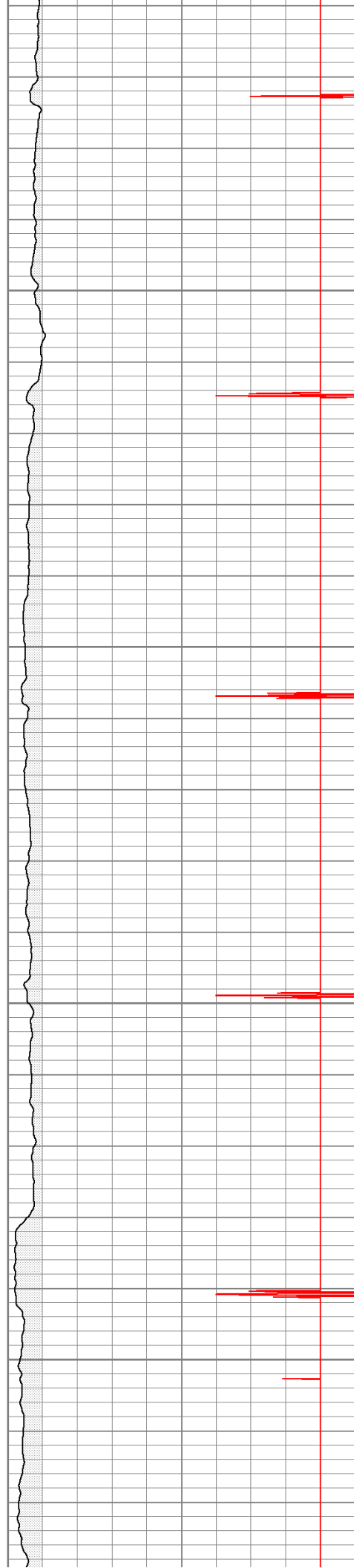


700

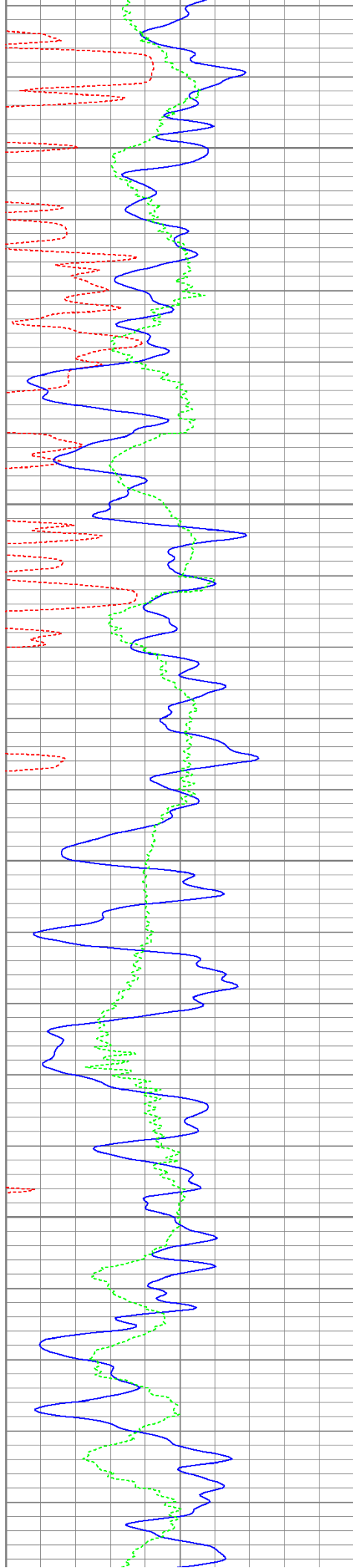
750

800

850







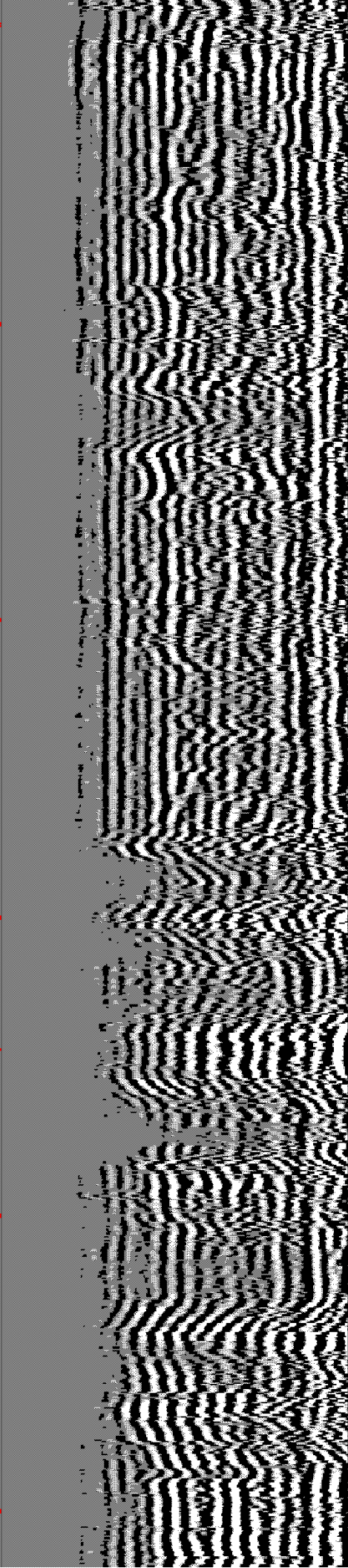
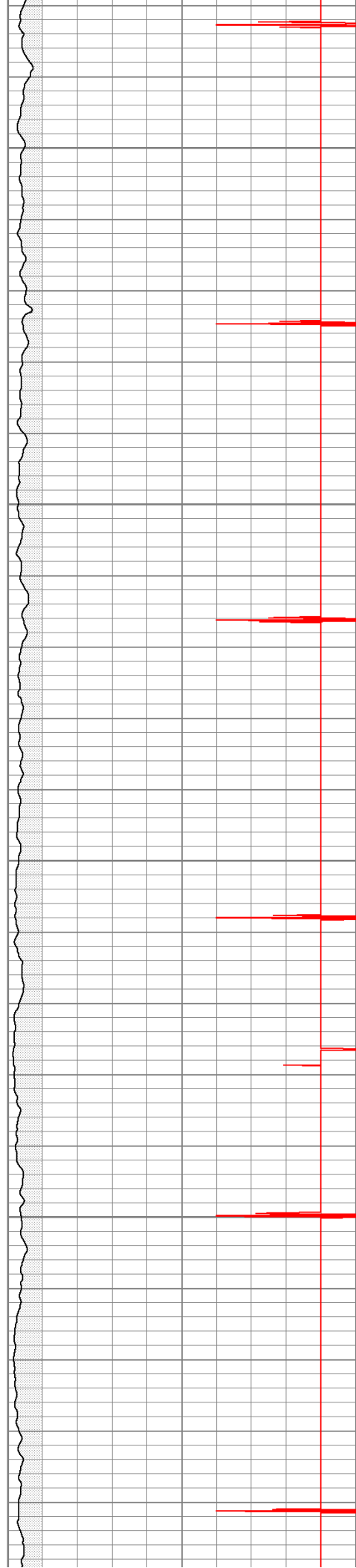
900

950

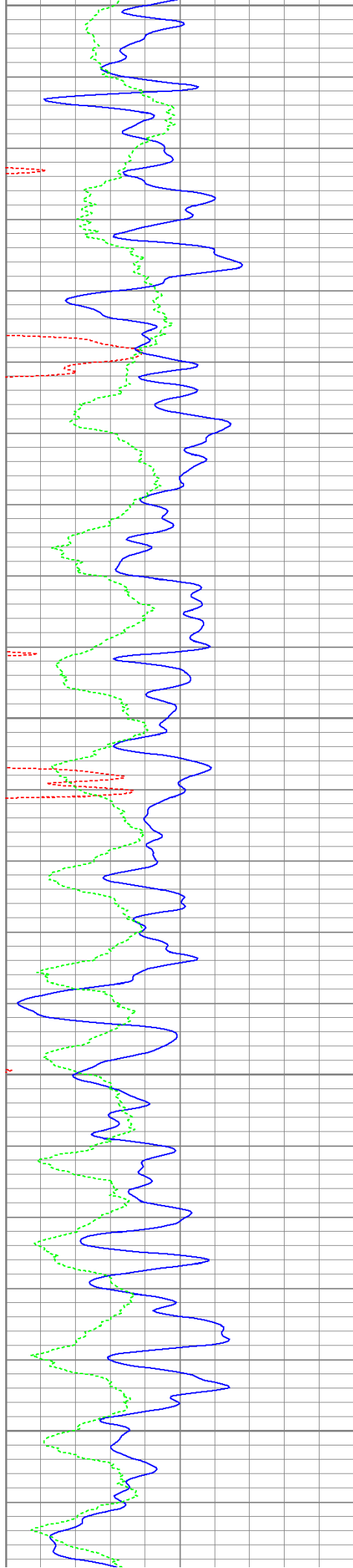
1000

1050

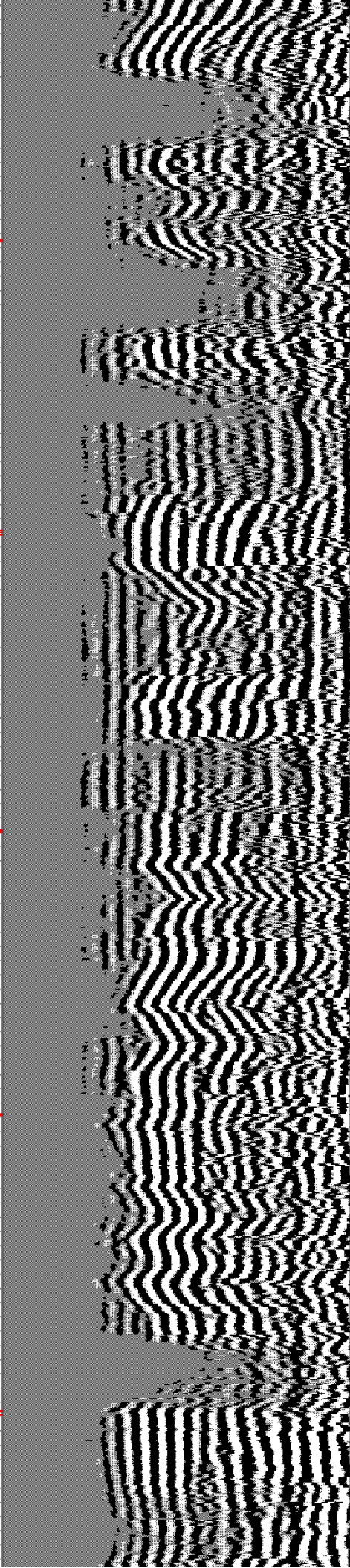
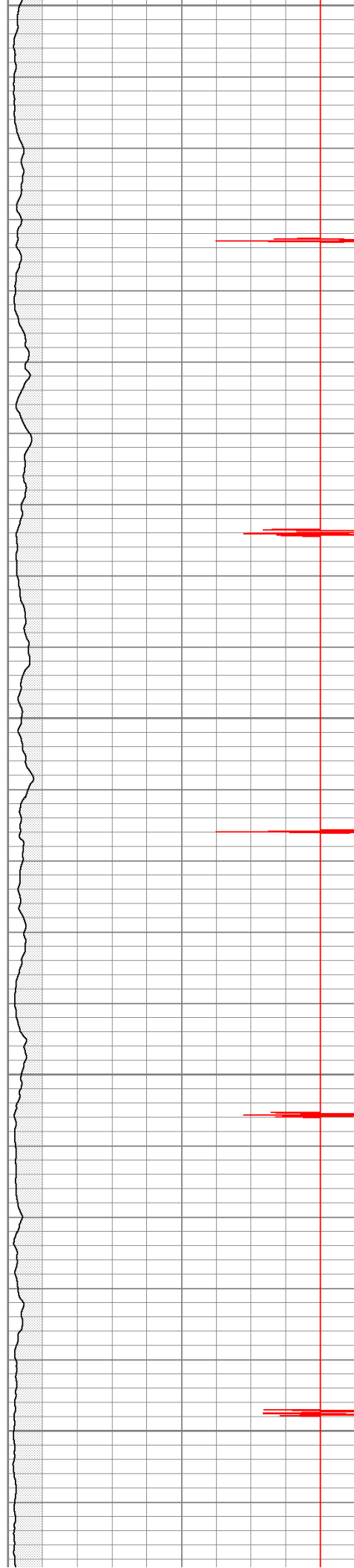
1100



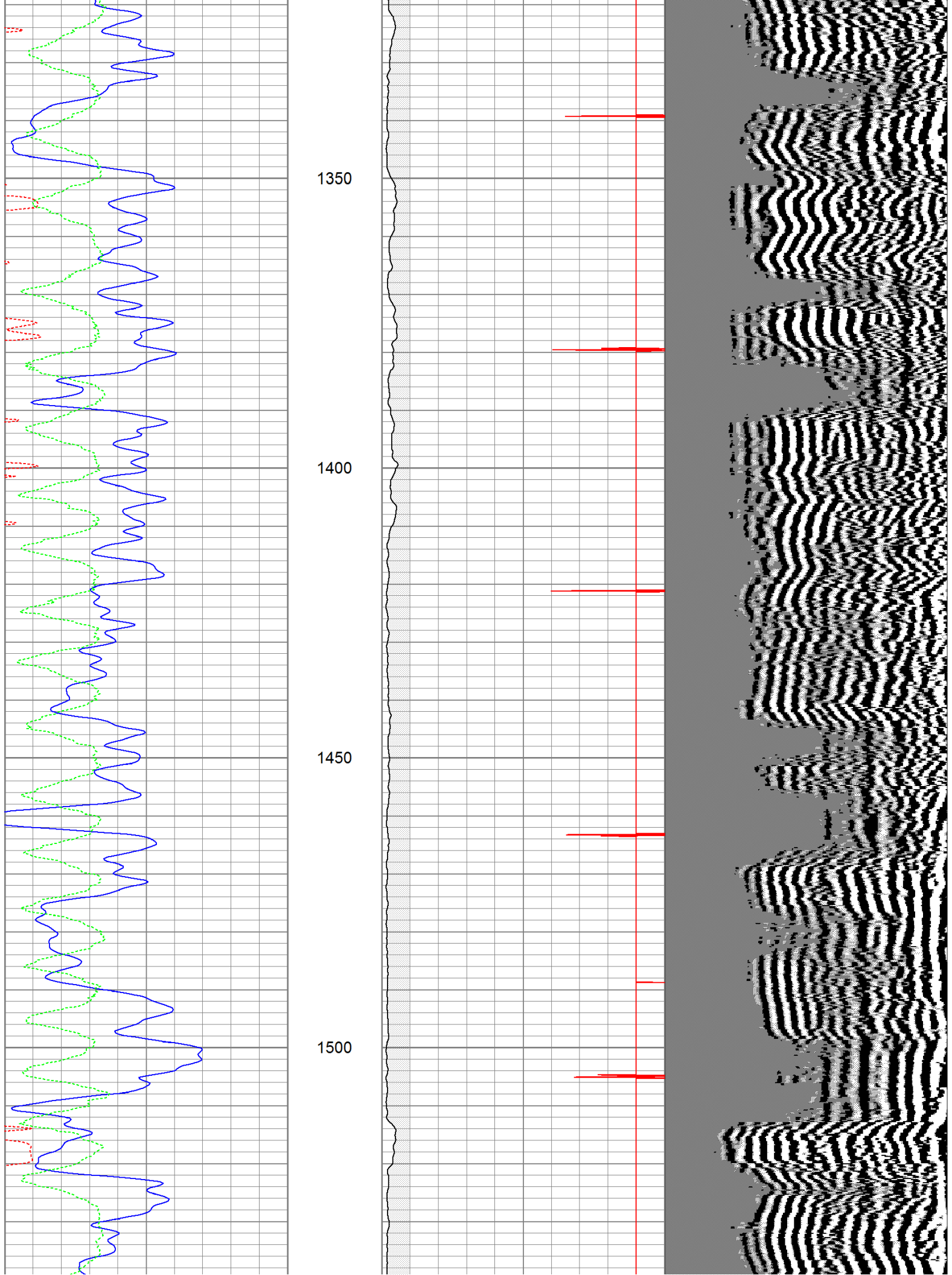




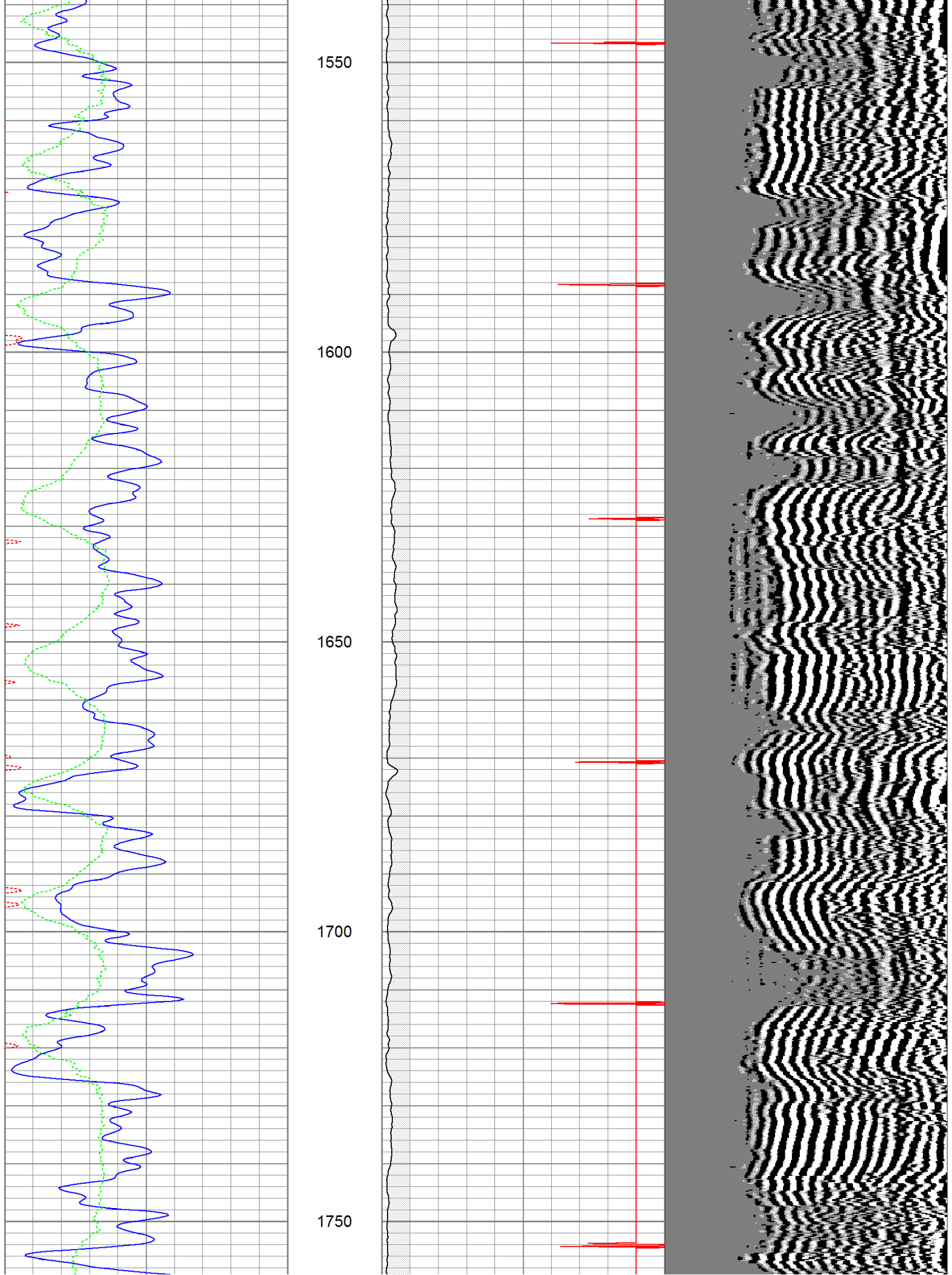
1100  
1150  
1200  
1250  
1300



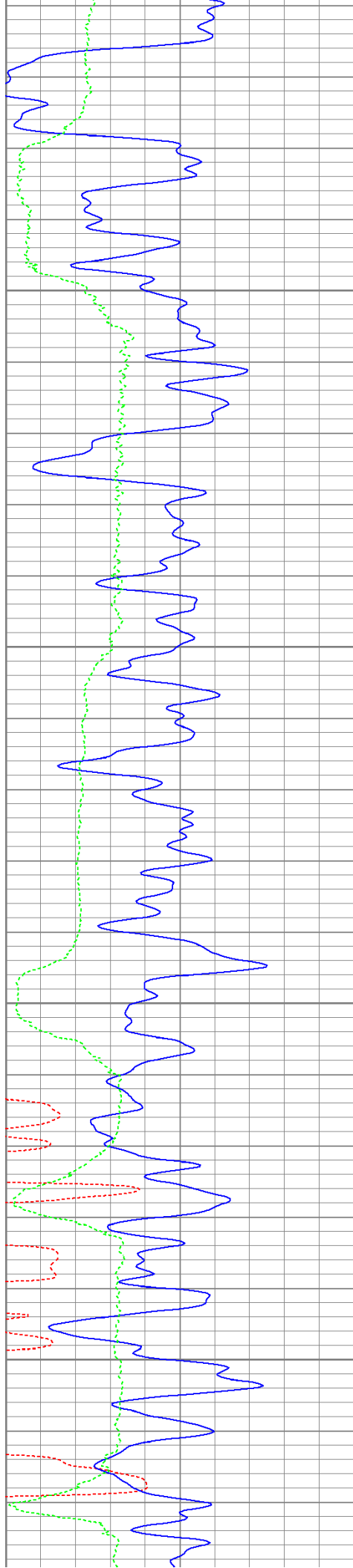










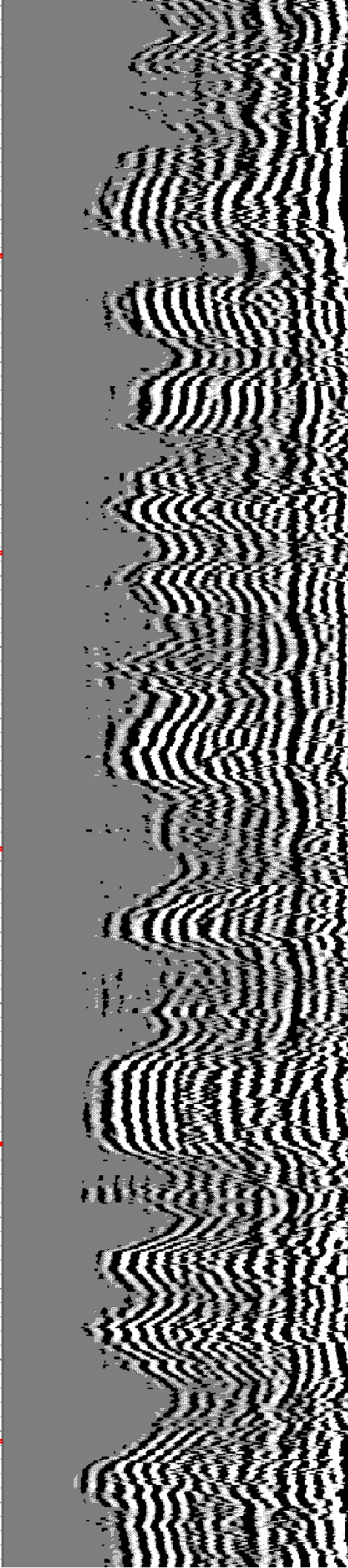
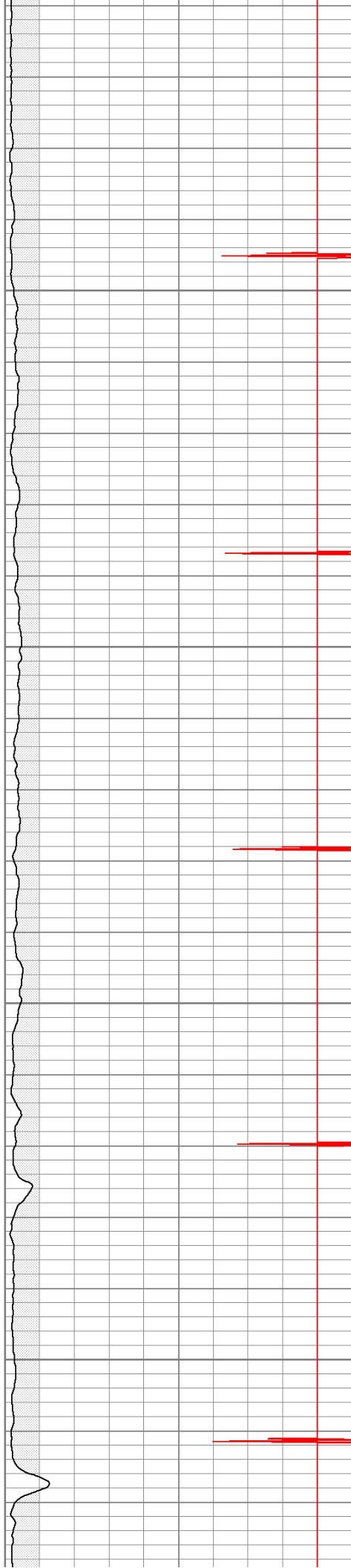


1800

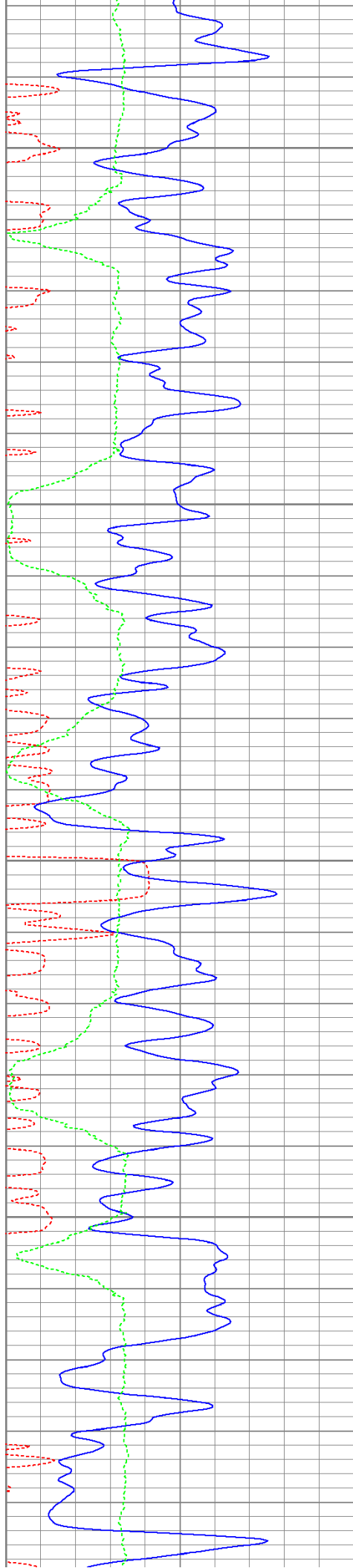
1850

1900

1950





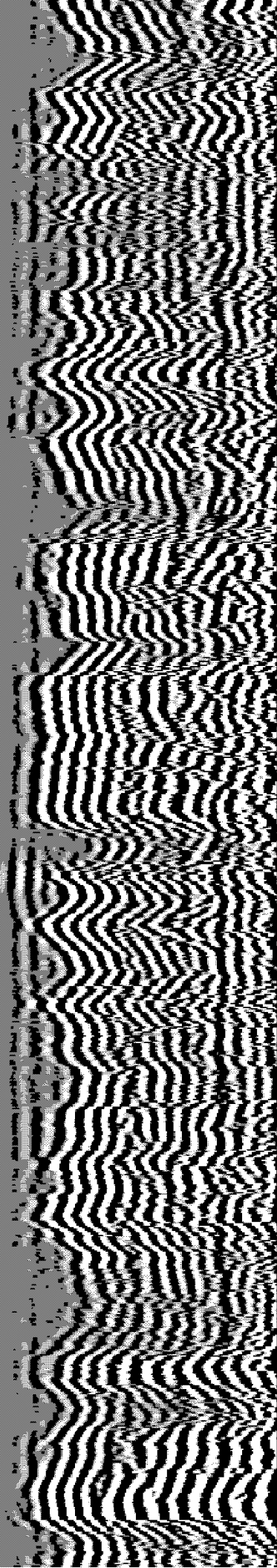
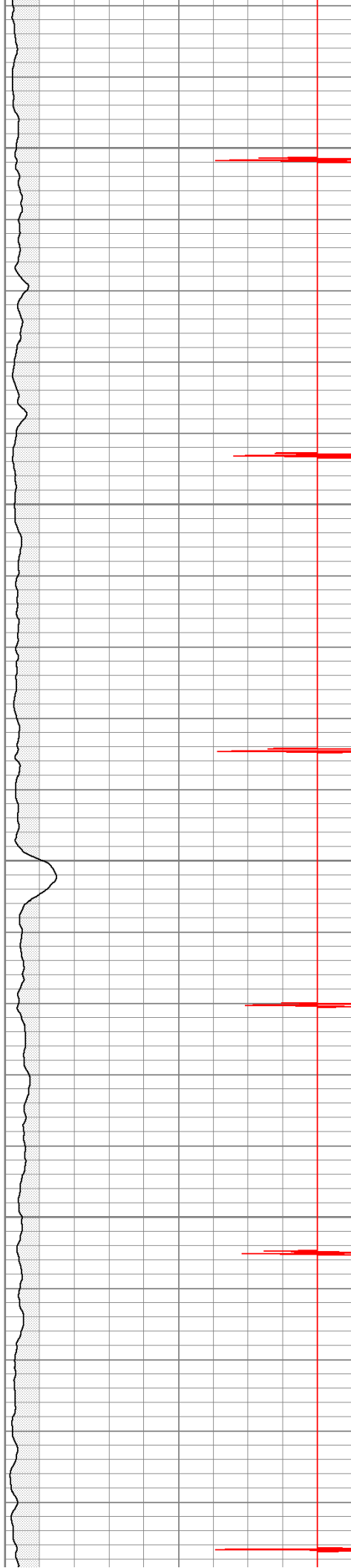


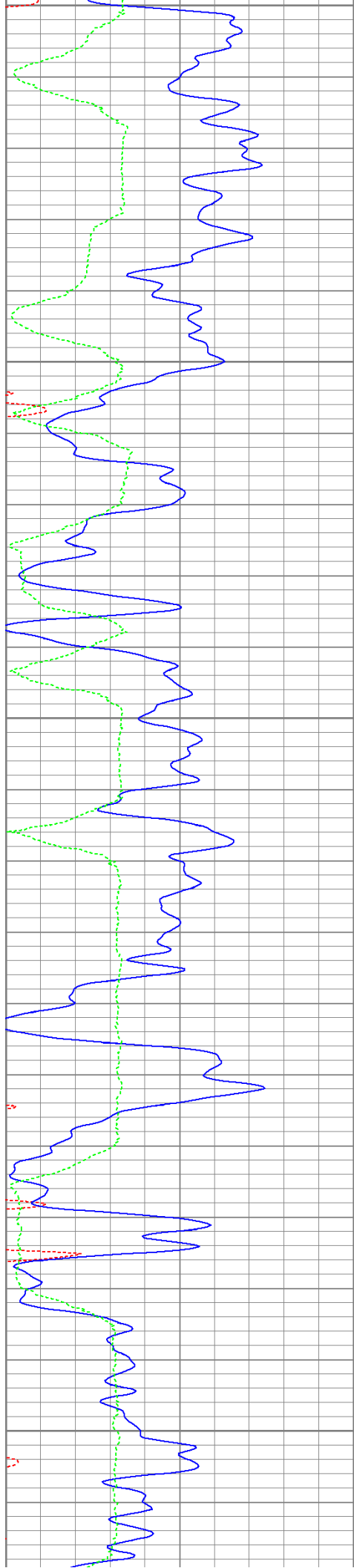
2000

2050

2100

2150





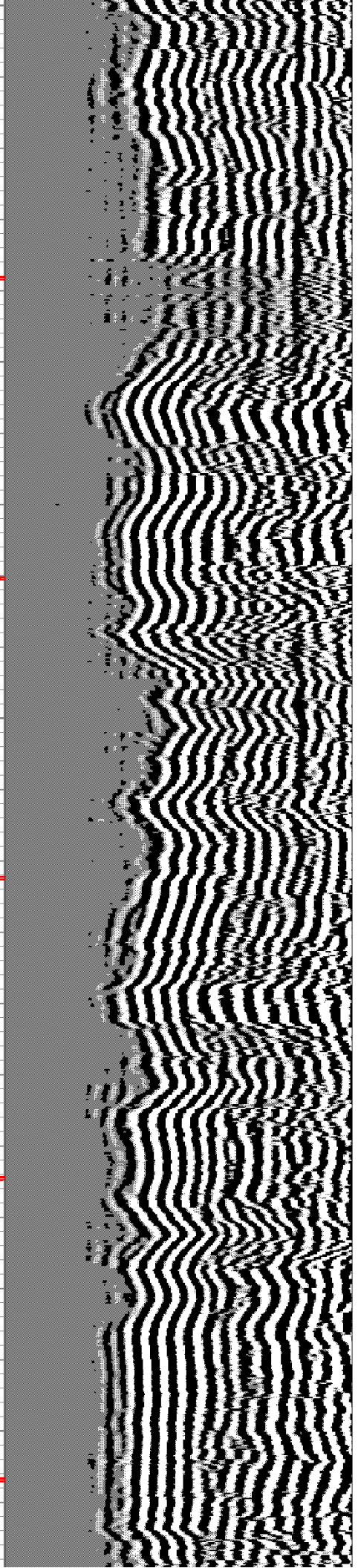
2200

2250

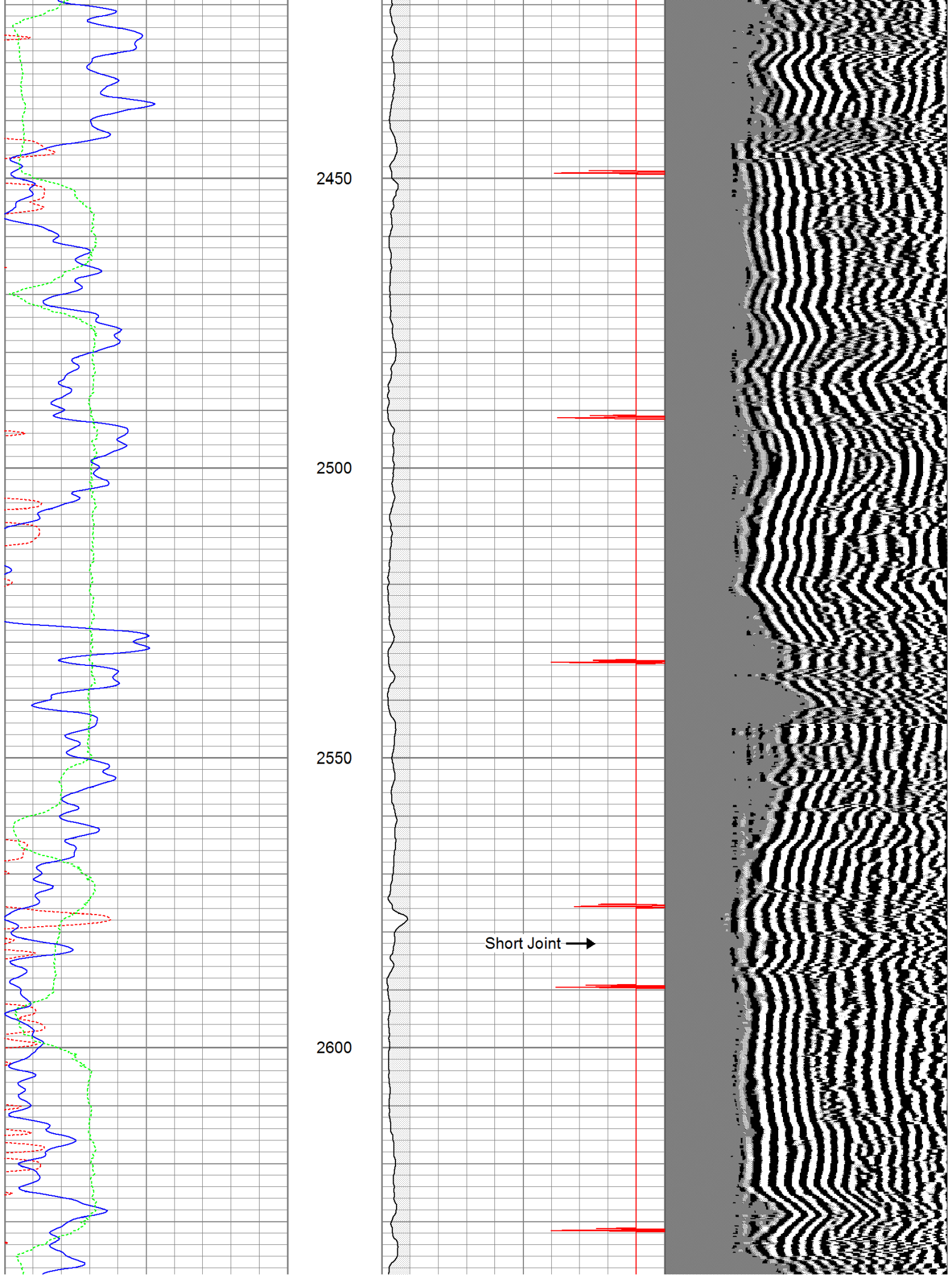
2300

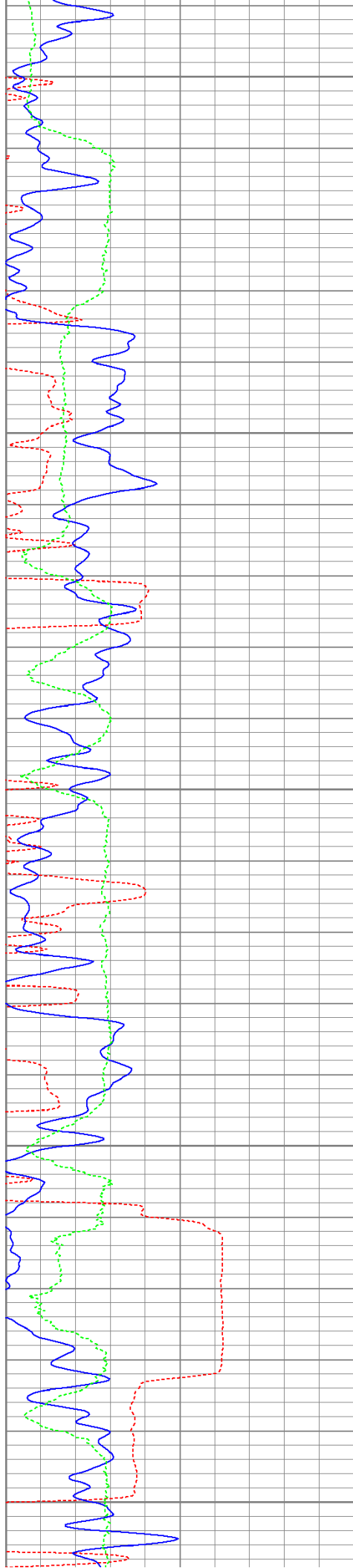
2350

2400









2650

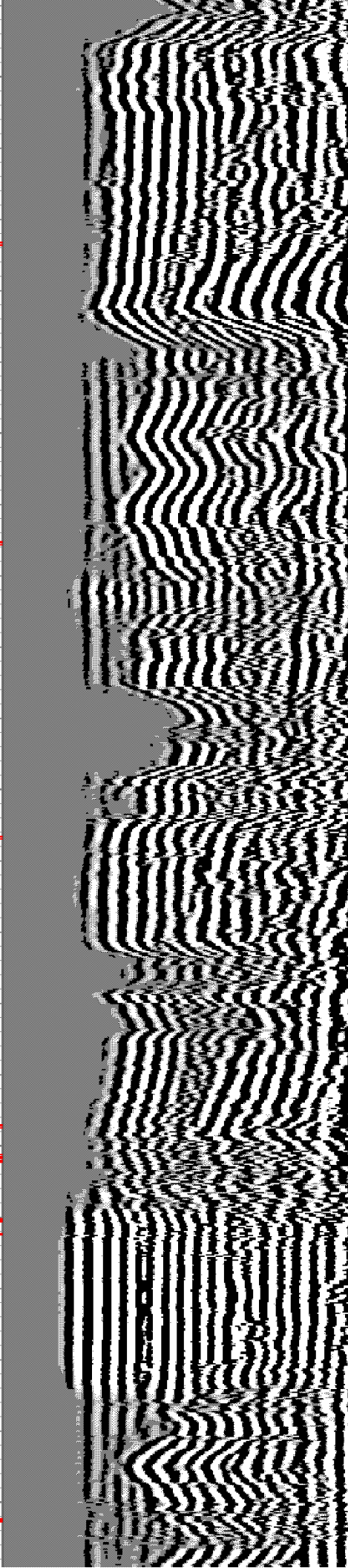
2700

2750

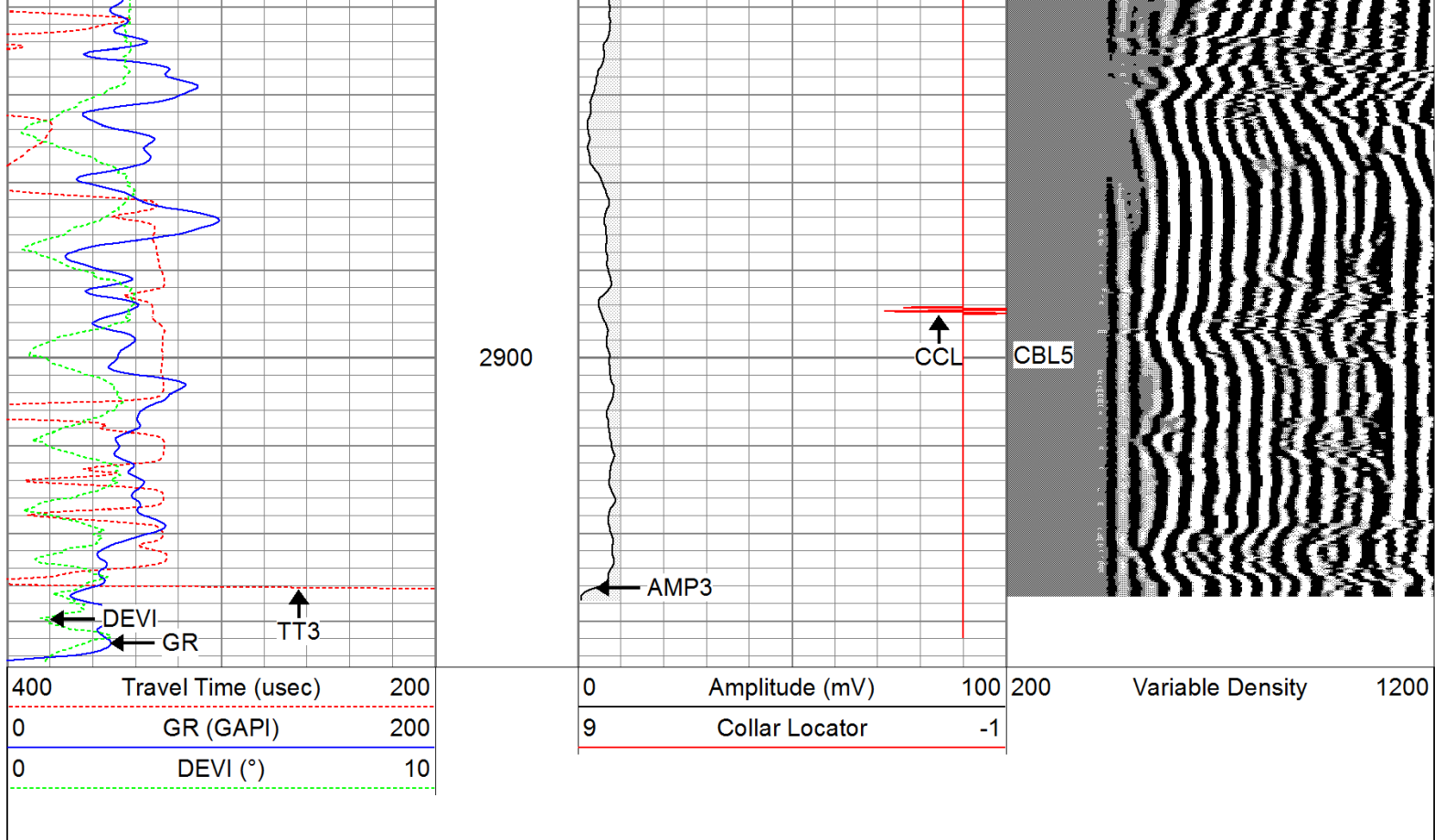
2800

2850

ECP →

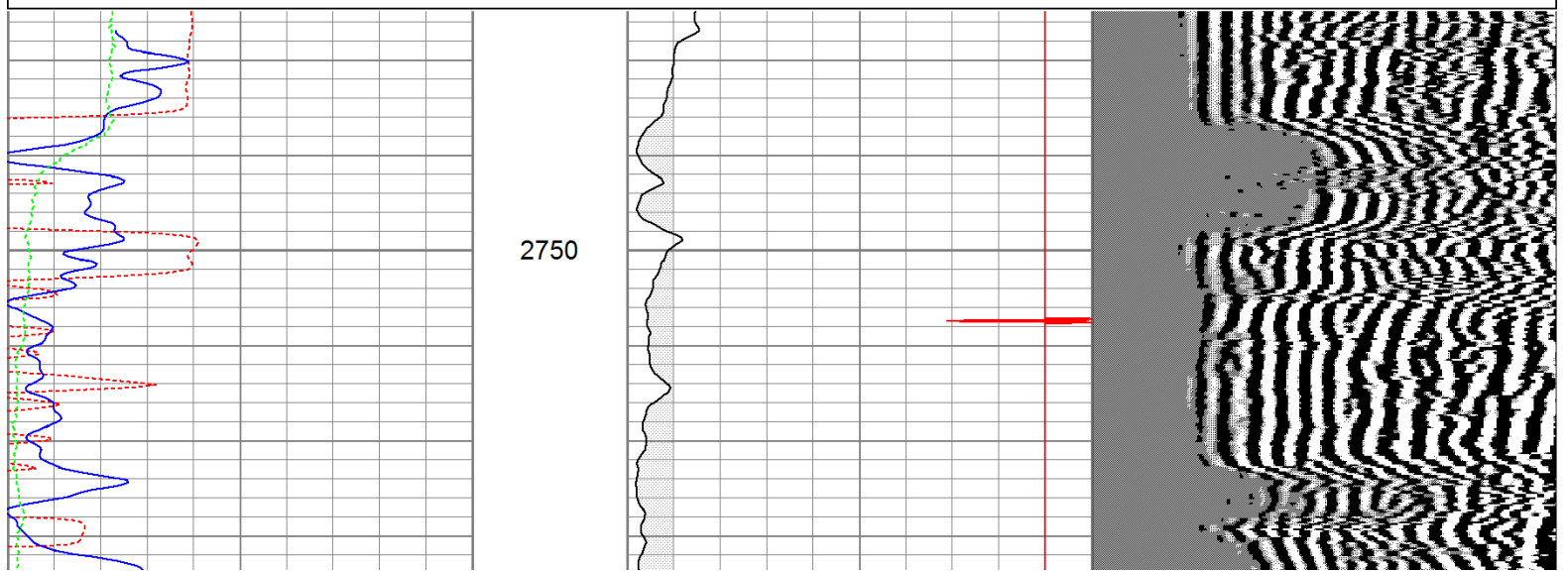
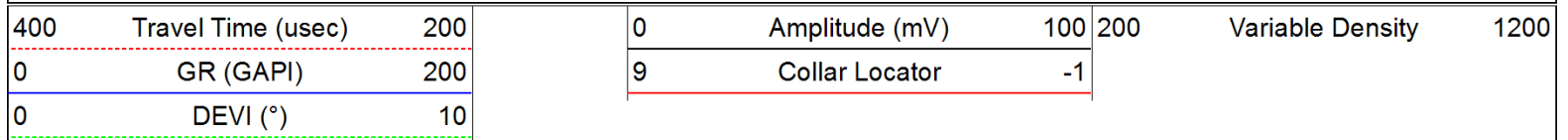


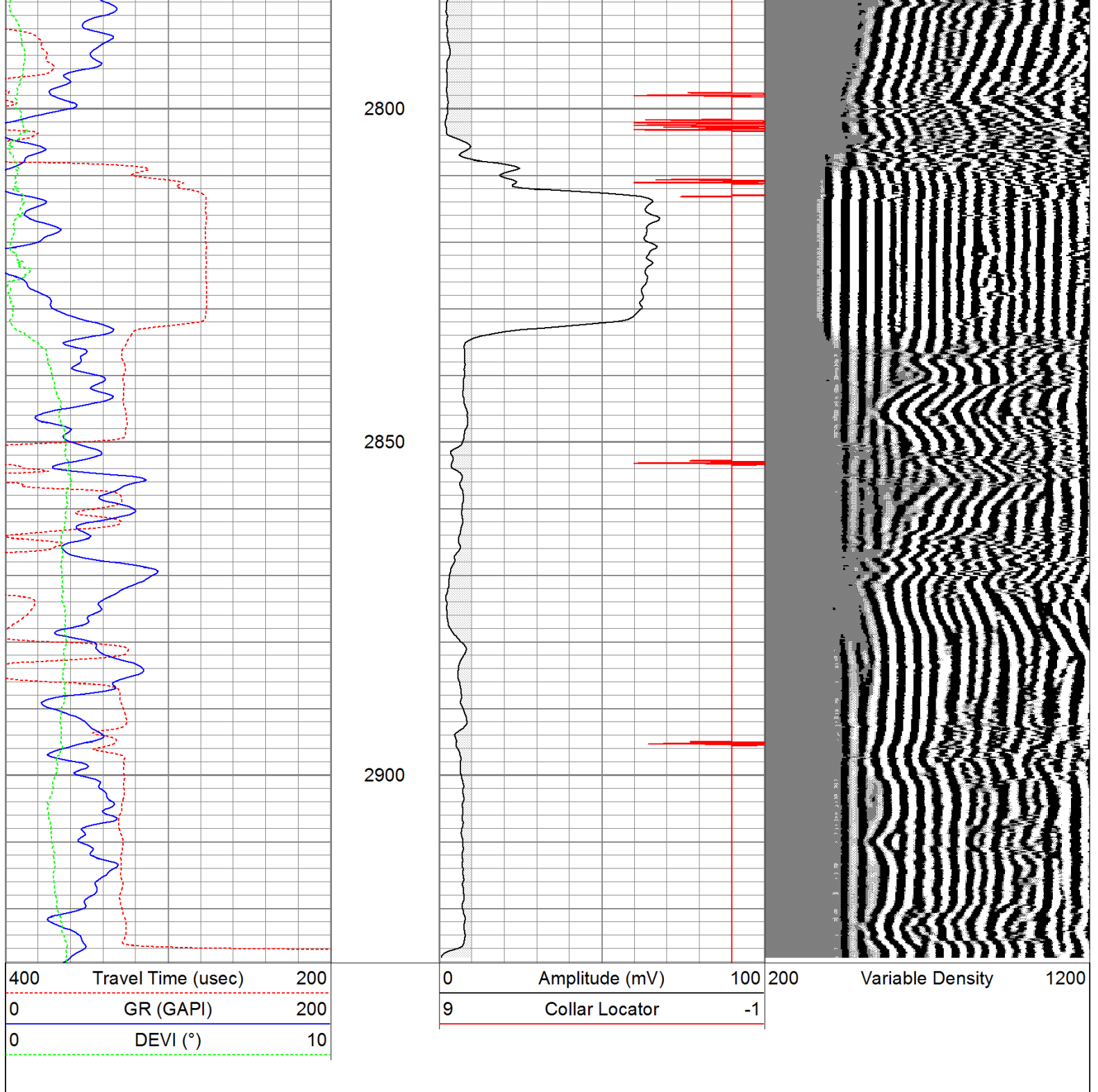




# Repeat Pass

Database File: brake handle 24-22.db  
 Dataset Pathname: pass2  
 Presentation Format: cbl dig  
 Dataset Creation: Wed Jun 22 18:04:33 2011 by Log Std Casedhole 10121  
 Charted by: Depth in Feet scaled 1:240





### Calibration Report

Database File: brake handle 24-22.db  
Dataset Pathname: pass2  
Dataset Creation: Wed Jun 22 18:04:33 2011 by Log Std Casedhole 10121

### Gamma Ray Calibration Report

Serial Number: 275D\_with\_INC  
Tool Model: 275D\_INC  
Performed: Thu Sep 02 13:30:35 2010

Calibrator Value: 200.0 GAPI

Background Reading: 50.0 cps  
Calibrator Reading: 250.0 cps



Sensitivity:	1.2000		GAPI/cps		
Inclinometer Calibration Report					
Performed:	Thu Sep 02 13:30:15 2010				
	Low Read.	High Read.	Low Ref.	High Ref.	
X Accelerometer	-3589.40	3580.00	-1.00	1.00	gee
Y Accelerometer	-3671.40	3520.20	-1.00	1.00	gee
Z Accelerometer					
Cement Bond Log Calibration Report					
Serial Number:	080201				
Tool Model:	DigitalCBL				
Performed:	Fri Dec 24 07:37:26 2010				
Depth:	659.925	ft			
Casing Diameter:	5.5	in			
	3' Spacing		5' Spacing		
Signal Zero:	1		0		mV
Calibrated Amplitude:	71.921		71.921		mV
Reading at Signal Zero:	0.00256348		0.00249023		V
Reading in Free Pipe:	1.4		0.678931		V
Gain:	50.7508		106.323		
Offset:	0.869901		-0.264769		