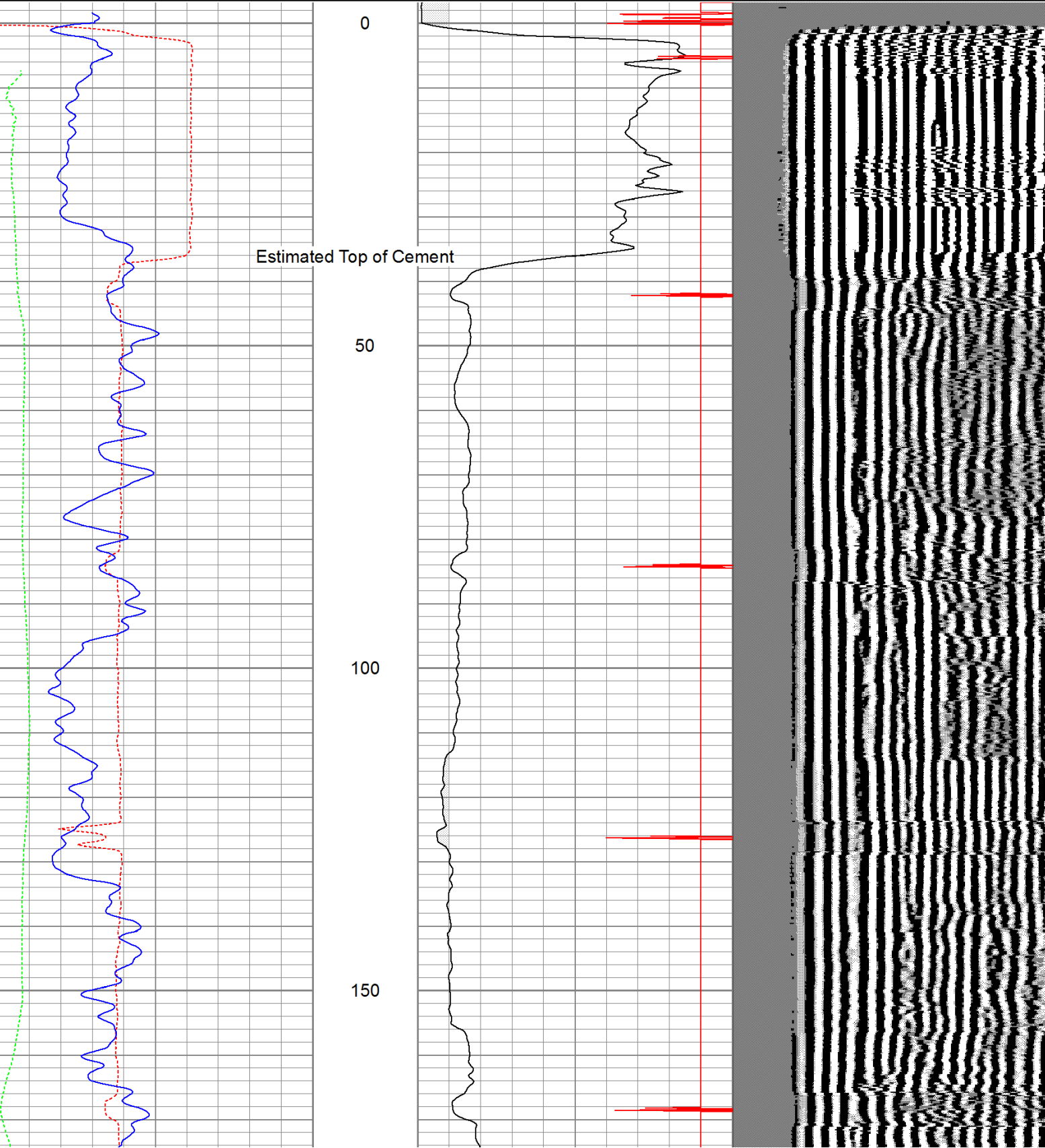
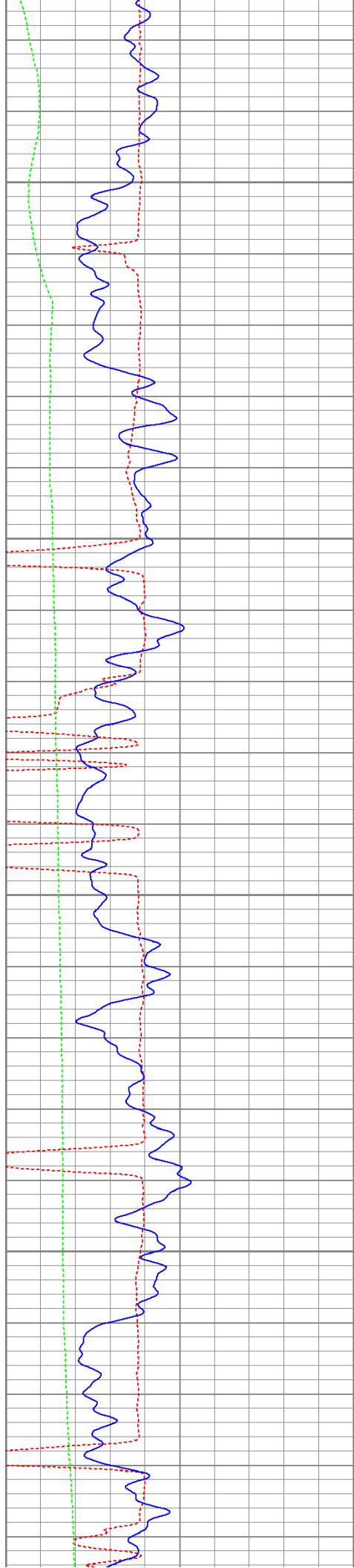


<<< Fold Here >>>
All interpretations are opinions based on inferences from electrical or other measurements and we cannot and do not guarantee the accuracy or correctness of any interpretation, and we shall not, except in the case of gross or willful negligence on our part, be liable or responsible for any loss, costs, damages, or expenses incurred or sustained by anyone resulting from any interpretation made by any of our officers, agents or employees. These interpretations are also subject to our general terms and conditions set out in our current Price Schedule.
Comments
<div>Directions: Wet Canyon, turn left up Cougar Ridge, at Y go right, stay straight around horse corrals and next left to location.</div>

Database File: cave canyon 23-4tr.db
Dataset Pathname: pass3.2
Presentation Format: cbldig
Dataset Creation: Wed Jun 22 15:21:04 2011 by Calc Open-Cased 110302
Charted by: Depth in Feet scaled 1:240

400	Travel Time (usec)	200	0	Amplitude (mV)	100	200	Variable Density	1200
0	GR (GAPI)	200	9	Collar Locator	-1			
0	DEVI (°)	10						



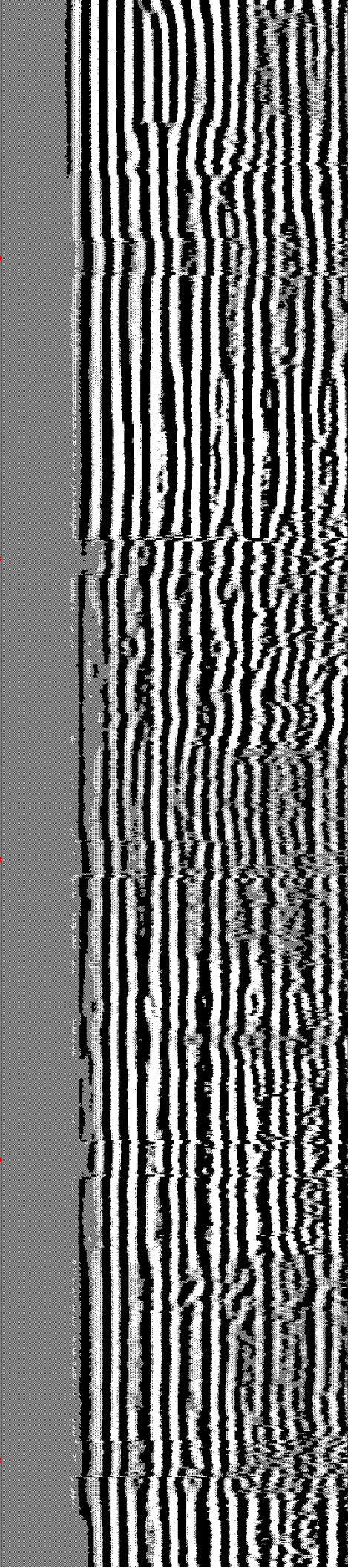
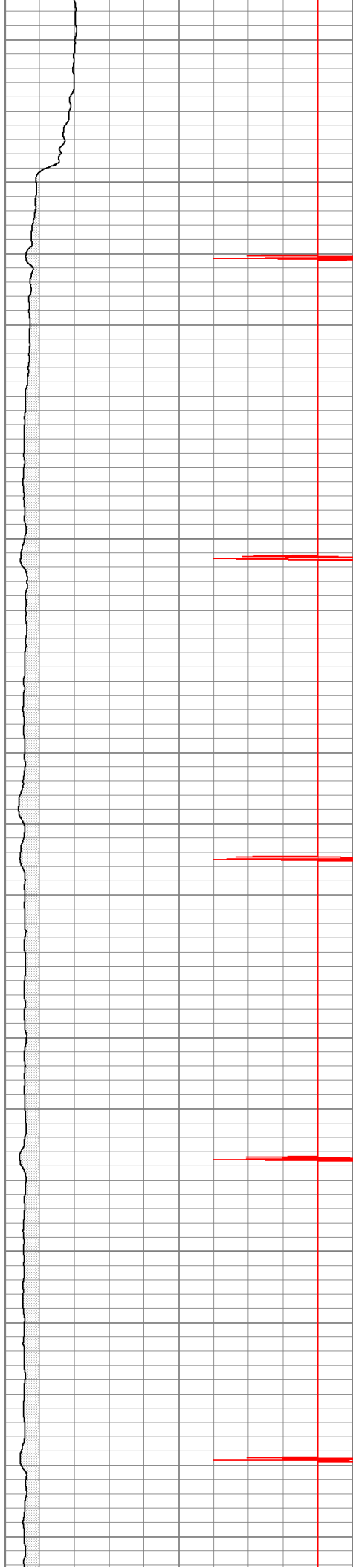


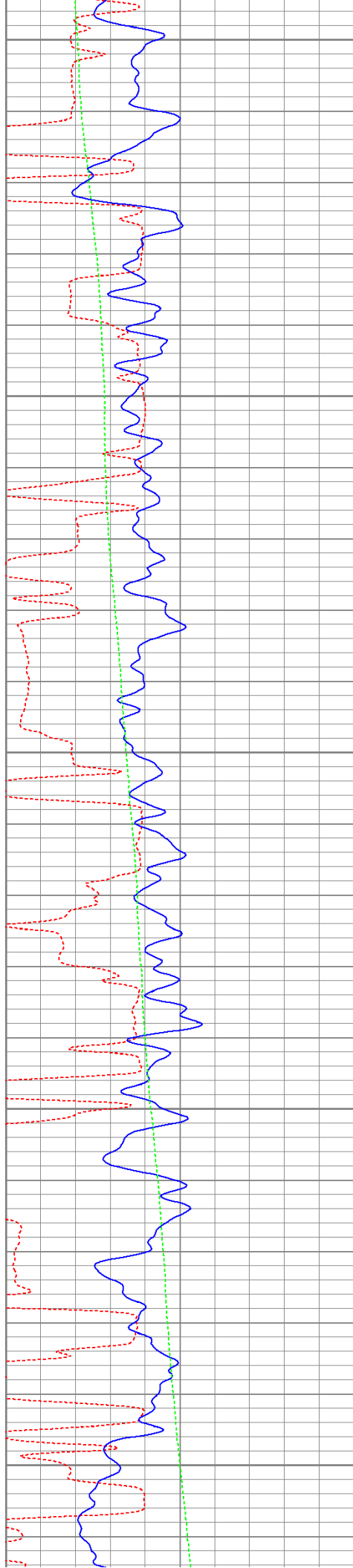
200

250

300

350





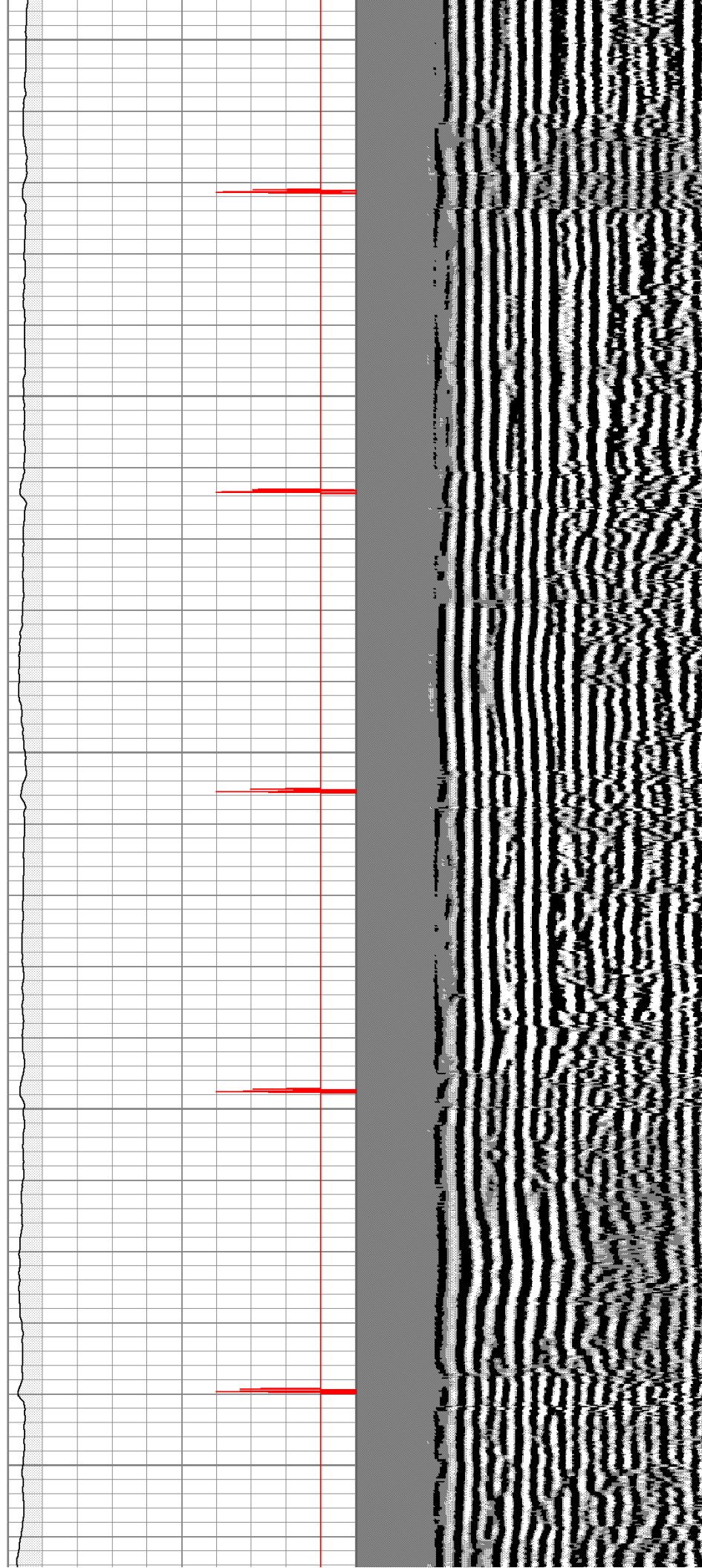
400

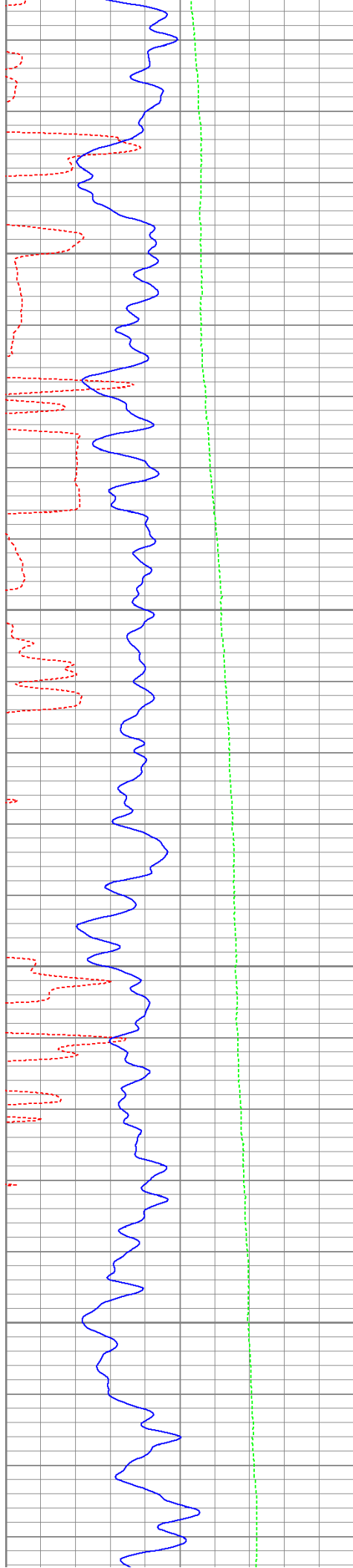
450

500

550

600



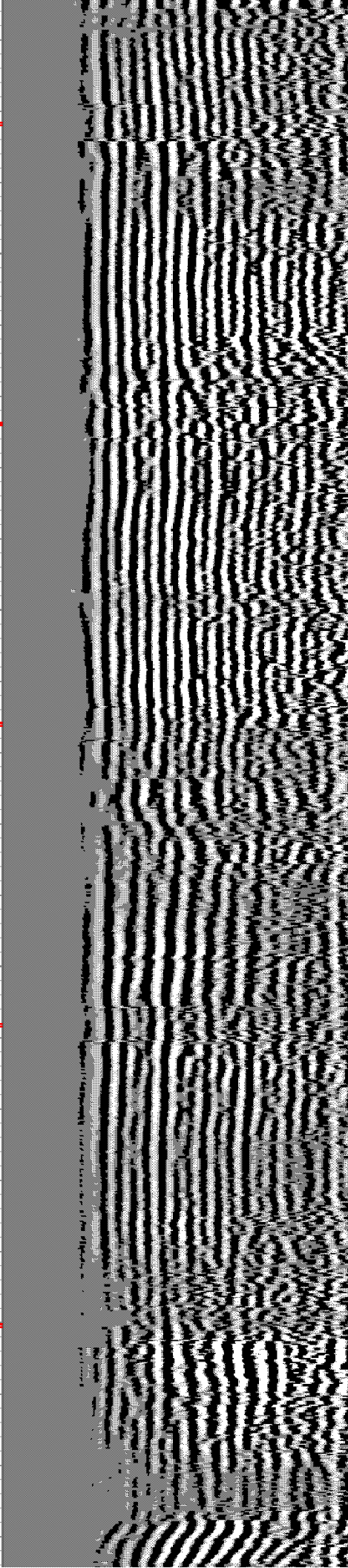
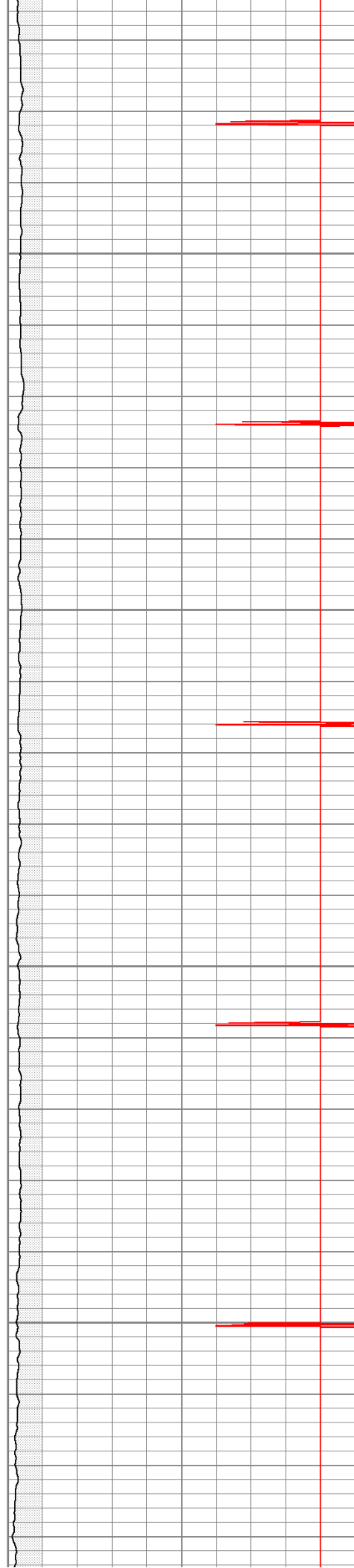


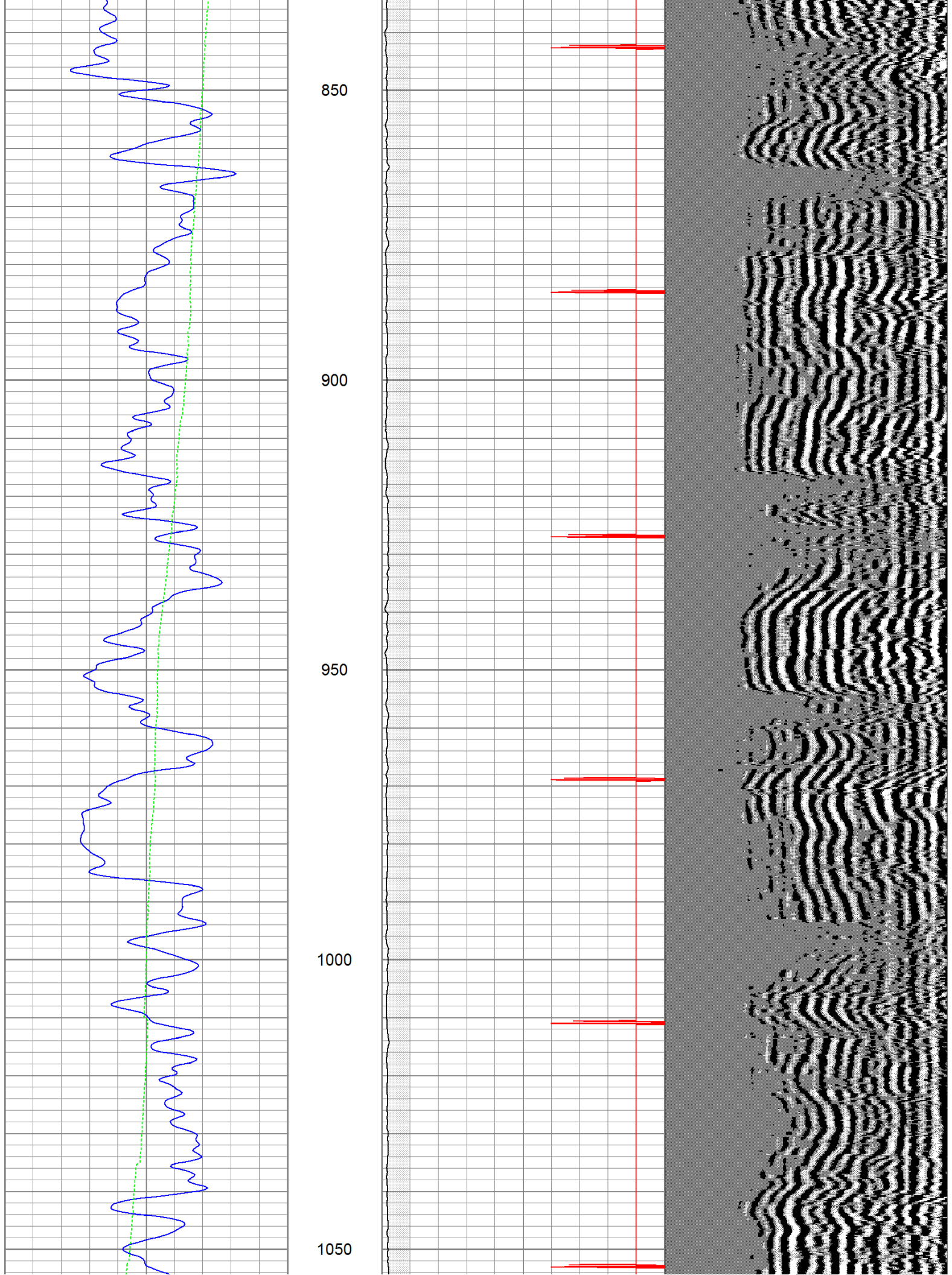
650

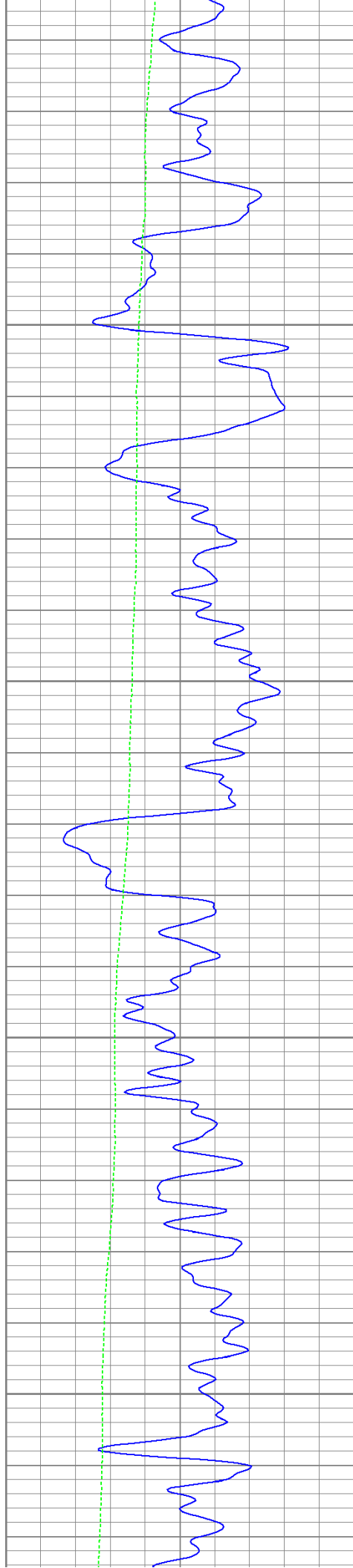
700

750

800





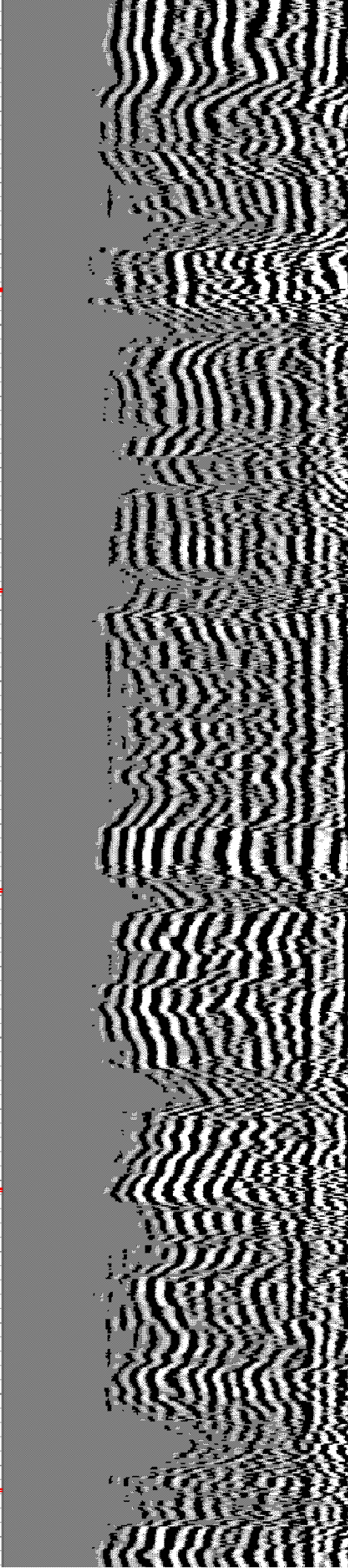
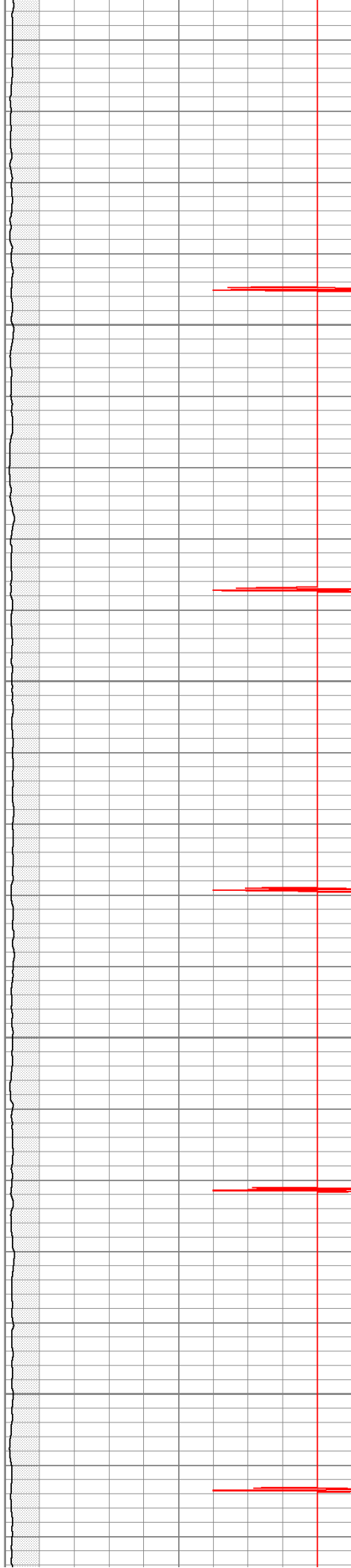


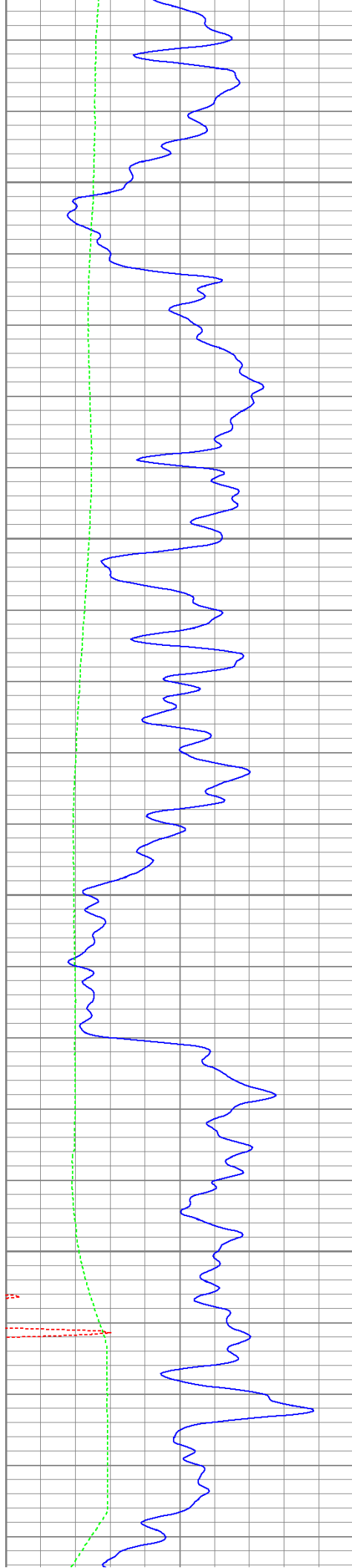
1100

1150

1200

1250





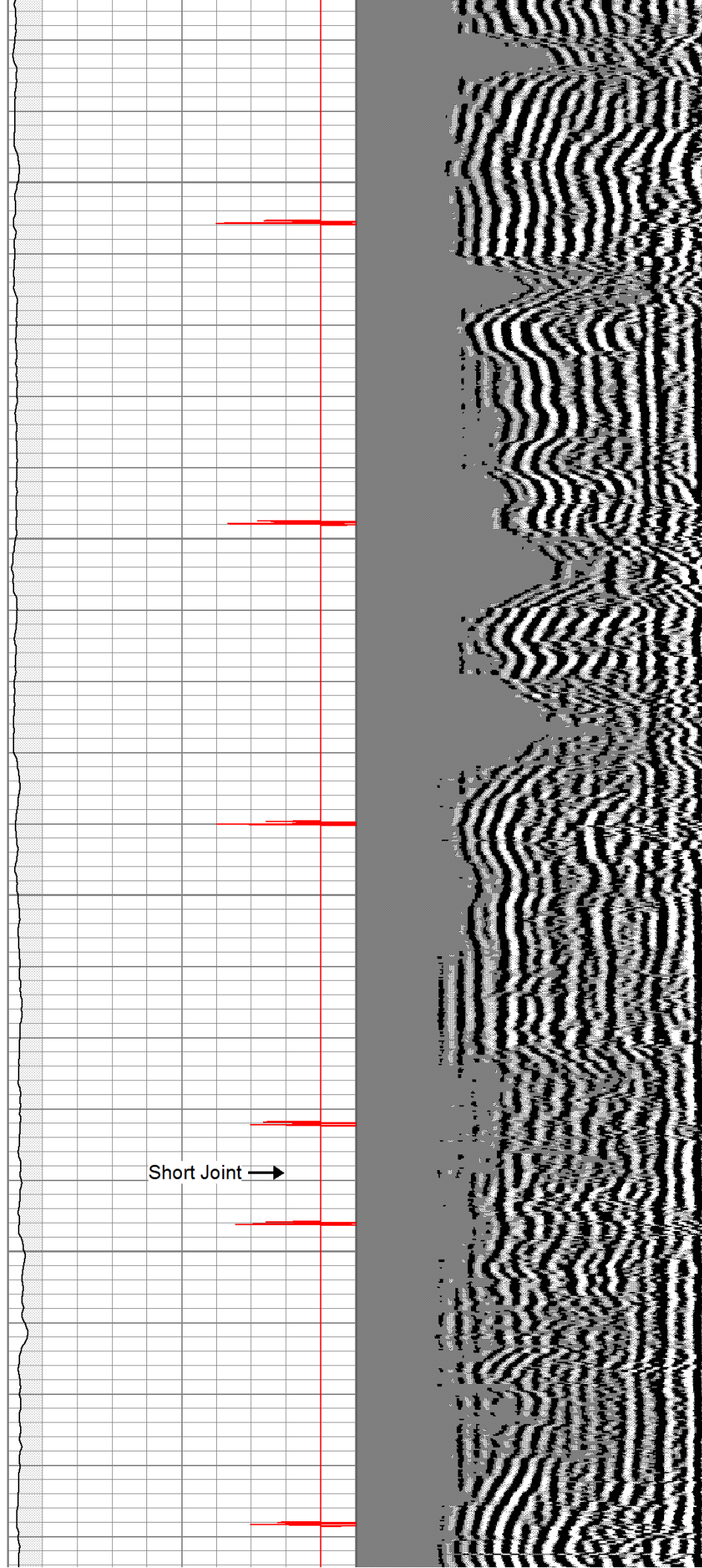
1300

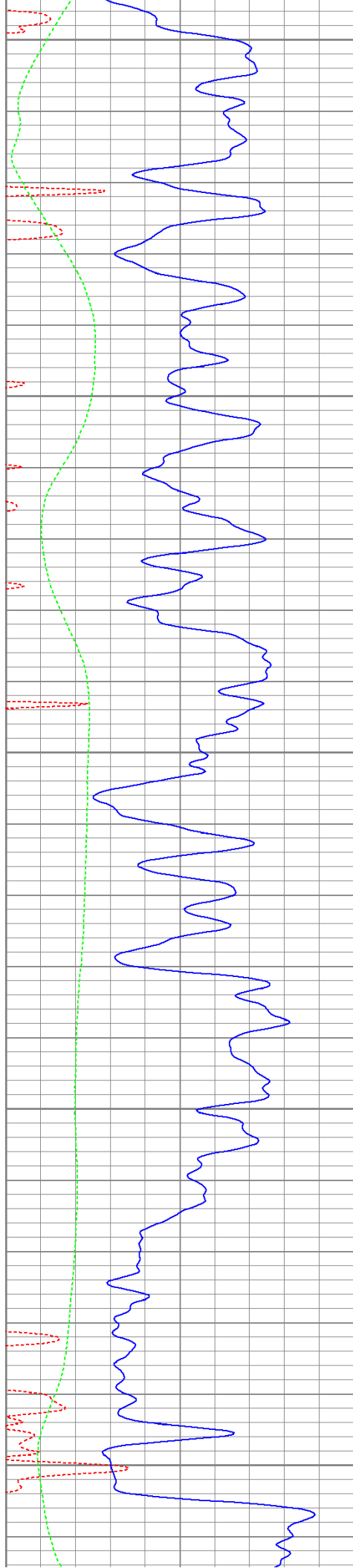
1350

1400

1450

Short Joint →





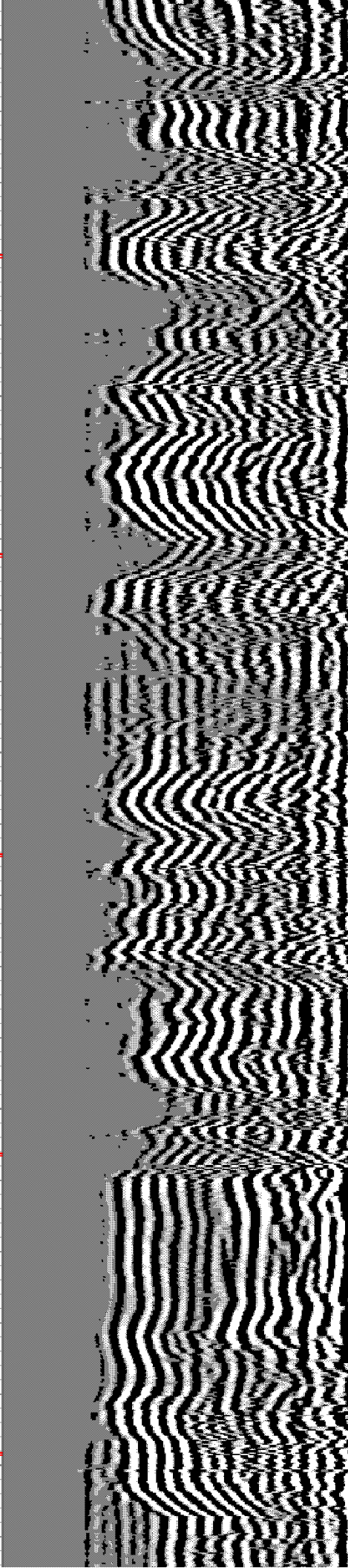
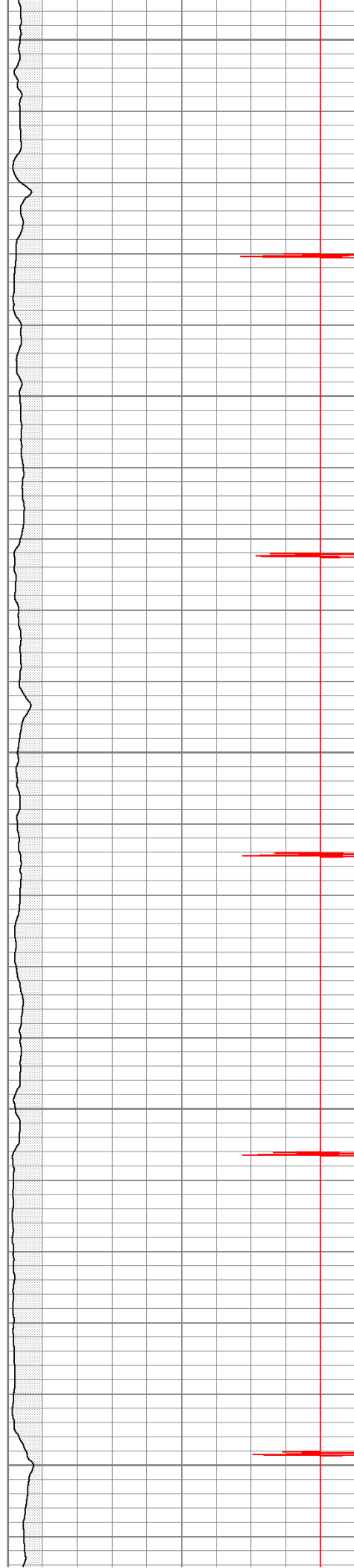
1500

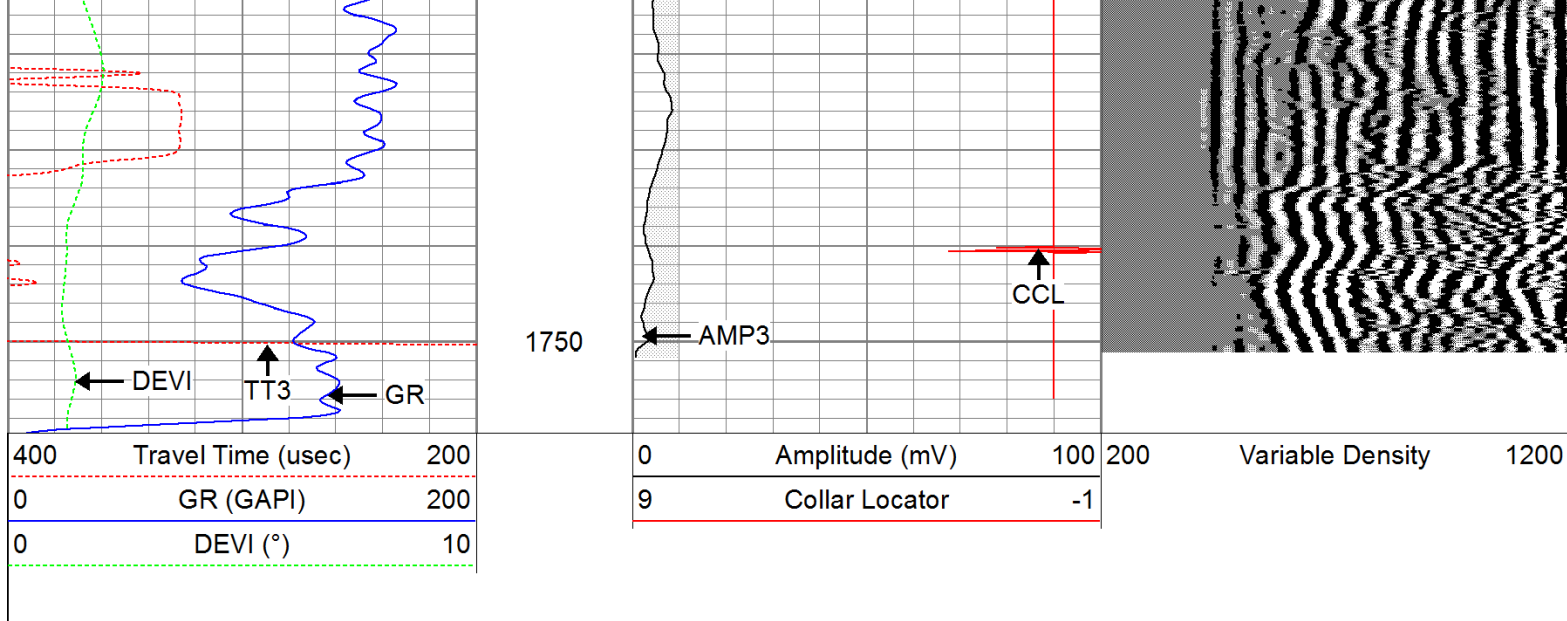
1550

1600

1650

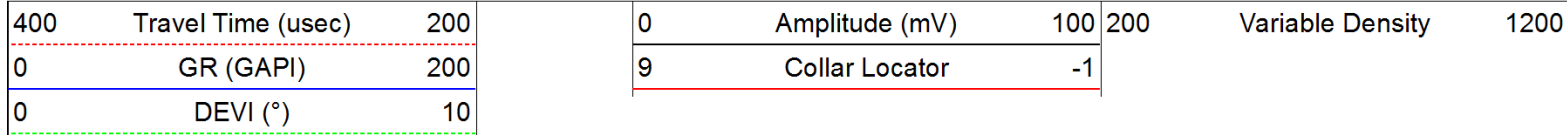
1700

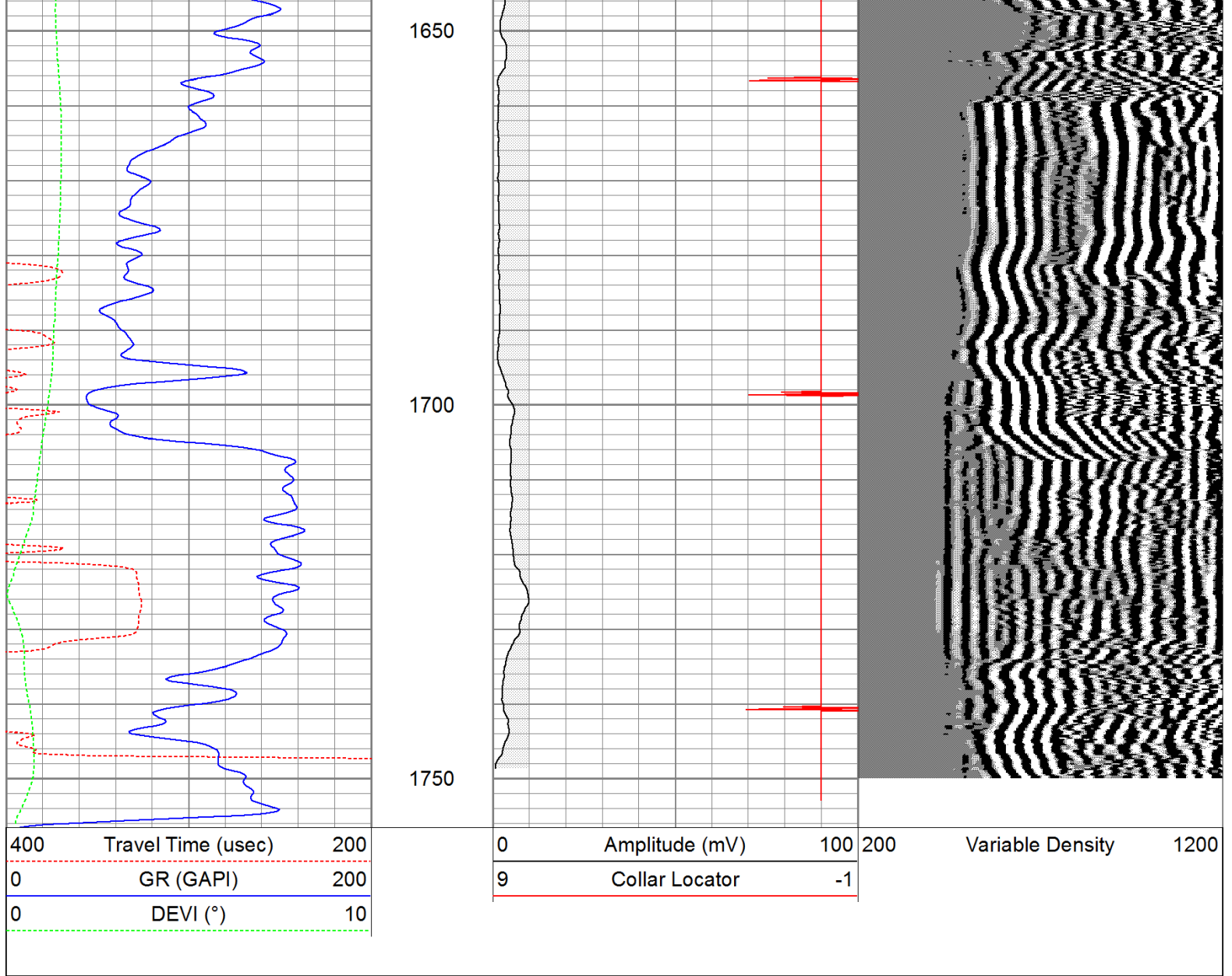




Repeat Pass

Database File: cave canyon 23-4tr.db
 Dataset Pathname: pass2.2
 Presentation Format: cbldig
 Dataset Creation: Wed Jun 22 15:24:57 2011 by Calc Open-Cased 110302
 Charted by: Depth in Feet scaled 1:240





Calibration Report					
Database File:	cave canyon 23-4tr.db				
Dataset Pathname:	pass2				
Dataset Creation:	Thu Jun 23 09:39:12 2011 by Log Std Casedhole 10121				
Gamma Ray Calibration Report					
Serial Number:	275D_with_INC				
Tool Model:	275D_INC				
Performed:	Thu Sep 02 13:30:35 2010				
Calibrator Value:	200.0	GAPI			
Background Reading:	50.0	cps			
Calibrator Reading:	250.0	cps			
Sensitivity:	1.0000	GAPI/cps			
Inclinometer Calibration Report					
Performed:	Thu Sep 02 13:30:15 2010				
	Low Read.	High Read.	Low Ref.	High Ref.	
X Accelerometer	-3589.40	3580.00	-1.00	1.00	gee

Y Accelerometer

-3671.40

3520.20

-1.00

1.00

gee

Z Accelerometer

Cement Bond Log Calibration Report

Serial Number: 080201
 Tool Model: DigitalCBL
 Performed: Fri Dec 24 07:37:26 2010

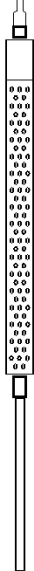
Depth: 659.925 ft
 Casing Diameter: 5.5 in

3' Spacing

5' Spacing

Signal Zero: 1 0 mV
 Calibrated Amplitude: 71.921 71.921 mV
 Reading at Signal Zero: 0.00256348 0.00249023 V
 Reading in Free Pipe: 1.4 0.678931 V

Gain: 50.7508 106.323
 Offset: 0.869901 -0.264769

Sensor	Offset (ft)	Schematic	Description	Len (ft)	OD (in)	Wt (lb)
			sdschd	0.75	1.44	3.00
			rub	0.33	1.75	0.80
WVF3	9.33		Probedig-DigitalCBL (080201) 2 3/4 Bond Tool	8.77	2.75	92.00
WVF5	8.33					
CCL	3.50		rub2	0.58	1.75	
ACCX	1.83		GR-275D_INC (275D_with_INC) 2-3/4" GR-CCL with Inclination	4.50	2.75	
ACCY	1.83					
ACCZ	1.83					
GR	0.83					
		Dataset:	cave canyon 23-4tr.db: field/well/run1/pass2			
		Total Length:	14.93 ft			
		Total Weight:	95.80 lb			
		O.D.	2.75 in			