

Dual Receiver Cement Bond Log

Company		Pioneer Natural Resources					
Well		Lynn 32-4 Tr					
Field		Purgatoire River					
County		Las Animas					
State		Colorado					
Location:		API # :					
SEC 4 TWP 33S RGE 67W		2128' FNL & 1614' FEL					
Permanent Datum Log Measured From		Ground Level Kelly Bushing 4' AGL					
Drilling Measured From		Kelly Bushing					
Elevation		7531'					
Other Services							
Date		6-22-11					
Run Number		ONE					
Depth Driller		1935'					
Depth Logger		1876'					
Bottom Logged Interval		1874'					
Top Log Interval		Surface					
Open Hole Size		7 7/8					
Type Fluid		water					
Density / Viscosity		///					
Max. Recorded Temp.		78 DEG F					
Estimated Cement Top		36'					
Time Well Ready		R.O.A					
Time Logger on Bottom		12:00 P.M.					
Equipment Number		T745					
Location		Trinidad					
Recorded By		C. Sisneros					
Witnessed By		Mr. Dave Martinez					
Borehole Record		Tubing Record					
Run Number	Bit	From	To	Size	Weight	From	To
Casing Record	Size	Wgt/Ft	Top	Bottom			
Surface String	8 5/8"		00	536'			
Prot. String							
Production String	4 1/2"		00	TD			
Liner							

<<< Fold Here >>>

All interpretations are opinions based on inferences from electrical or other measurements and we cannot and do not guarantee the accuracy or correctness of any interpretation, and we shall not, except in the case of gross or willful negligence on our part, be liable or responsible for any loss, costs, damages, or expenses incurred or sustained by anyone resulting from any interpretation made by any of our officers, agents or employees. These interpretations are also subject to our general terms and conditions set out in our current Price Schedule.

Comments

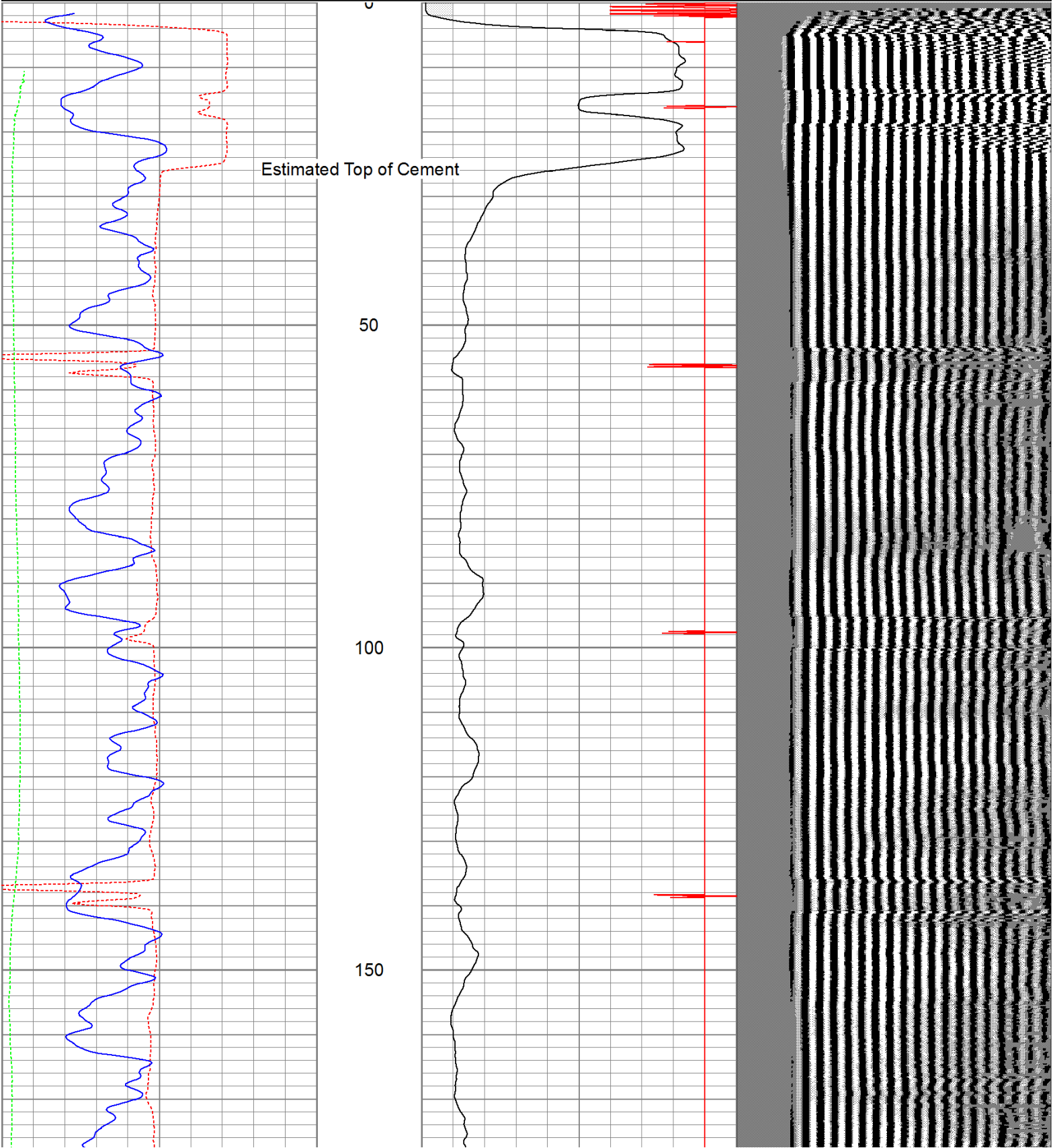
4.5" Casing
Directions:
Wet Canyon, turn left up Cougar Ridge, 2nd left to location.

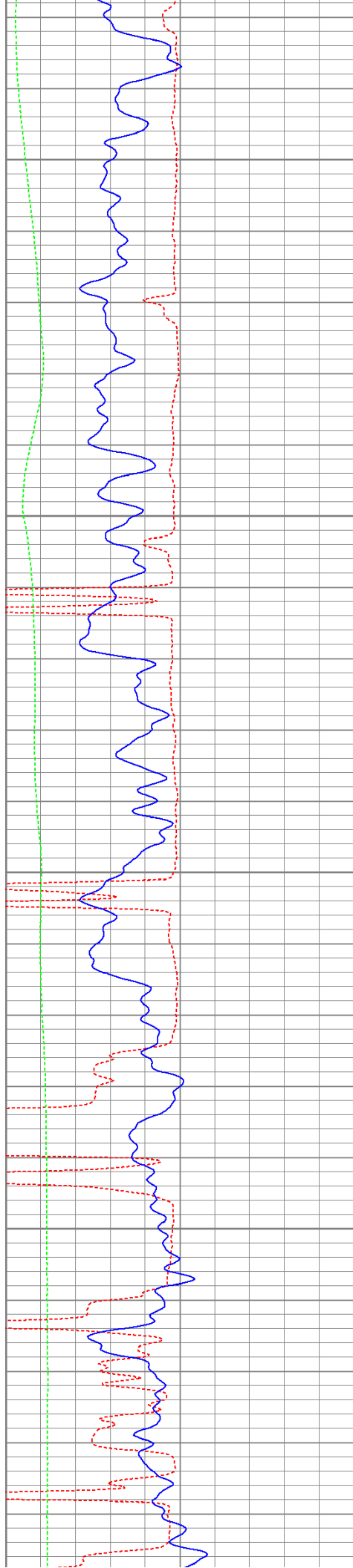
Database File: lynnr62211b.db
Dataset Pathname: pass3.2
Presentation Format: cbldig
Dataset Creation: Wed Jun 22 15:12:16 2011 by Calc Open-Cased 110302
Charted by: Depth in Feet scaled 1:240

400	Travel Time (usec)	200
0	GR (GAPI)	200
0	DEVI (°)	10

0	Amplitude (mV)	100
9	Collar Locator	-1

200 Variable Density 1200



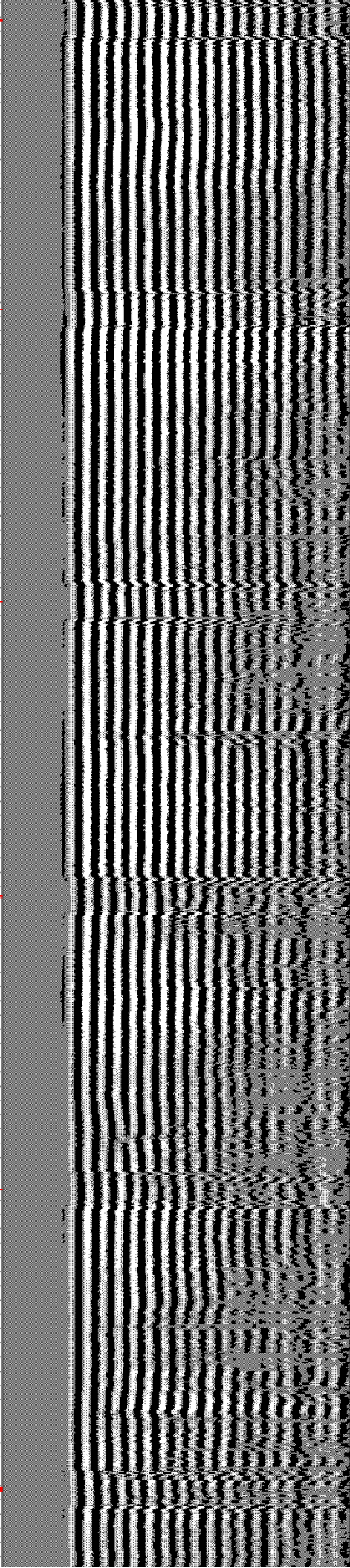


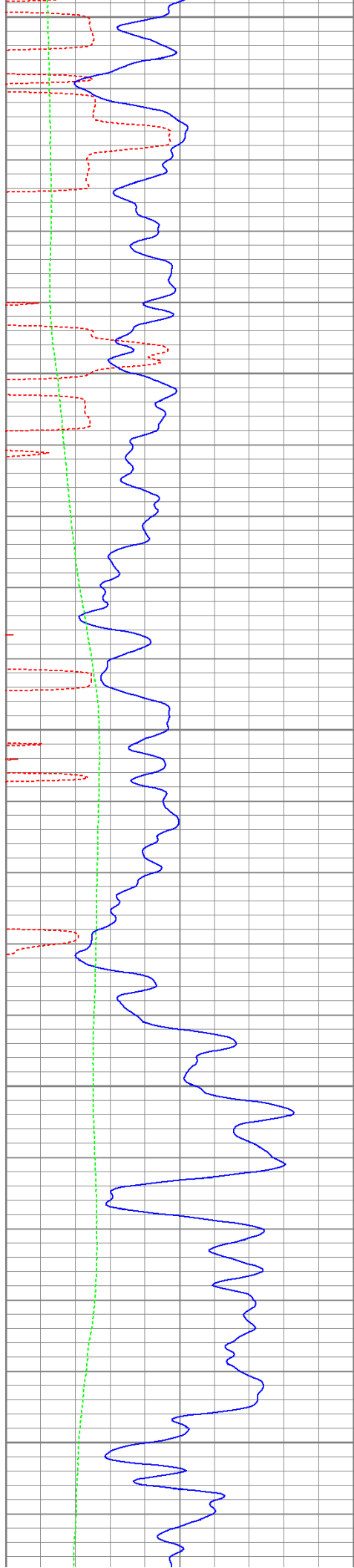
200

250

300

350





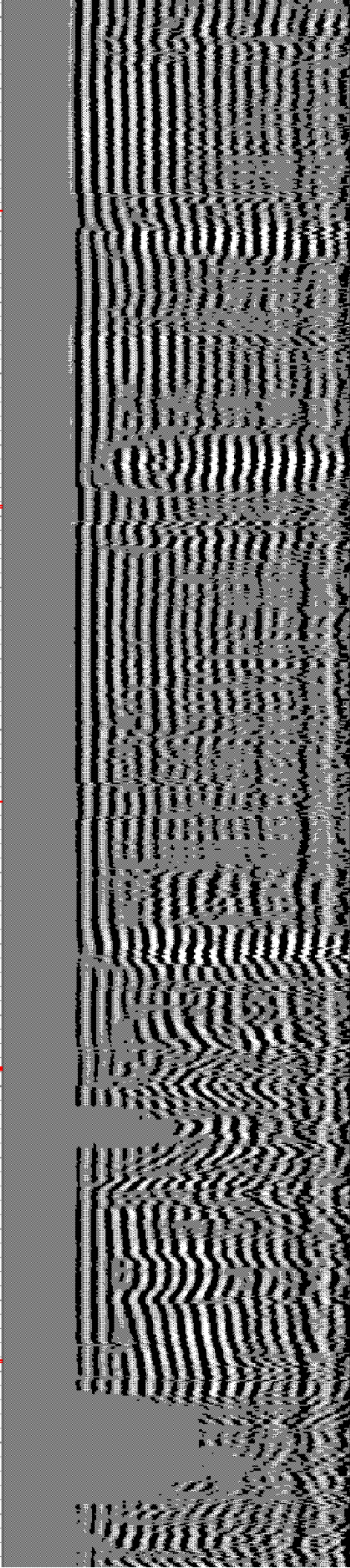
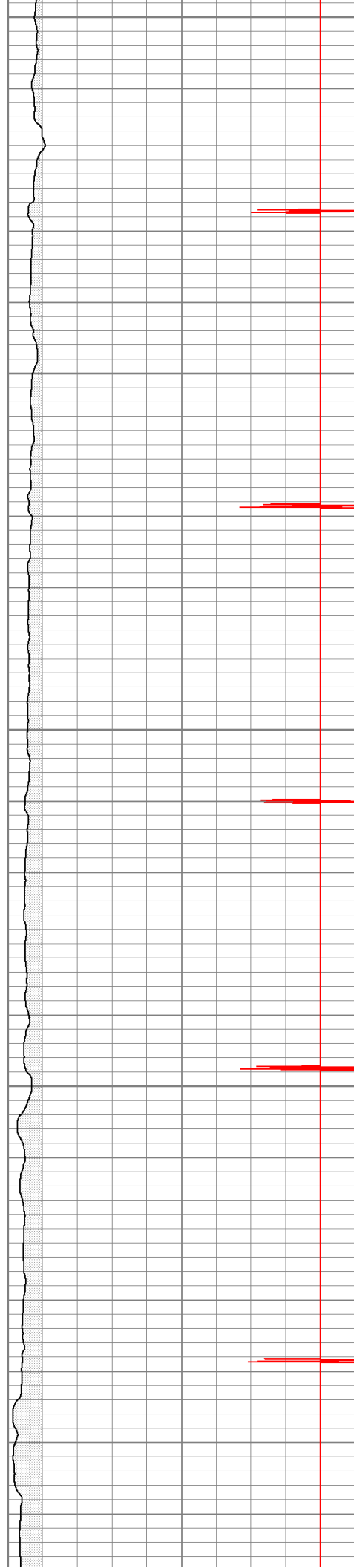
400

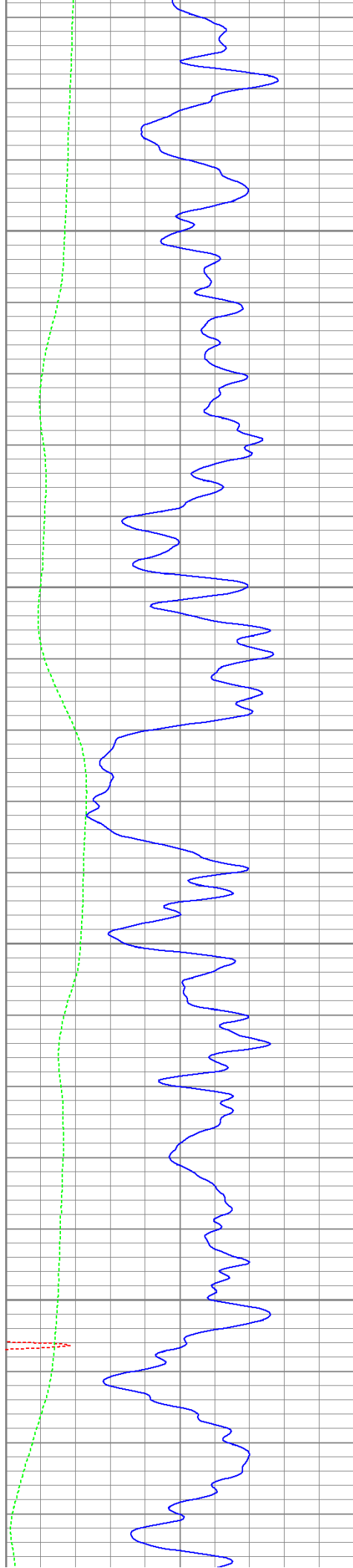
450

500

550

600



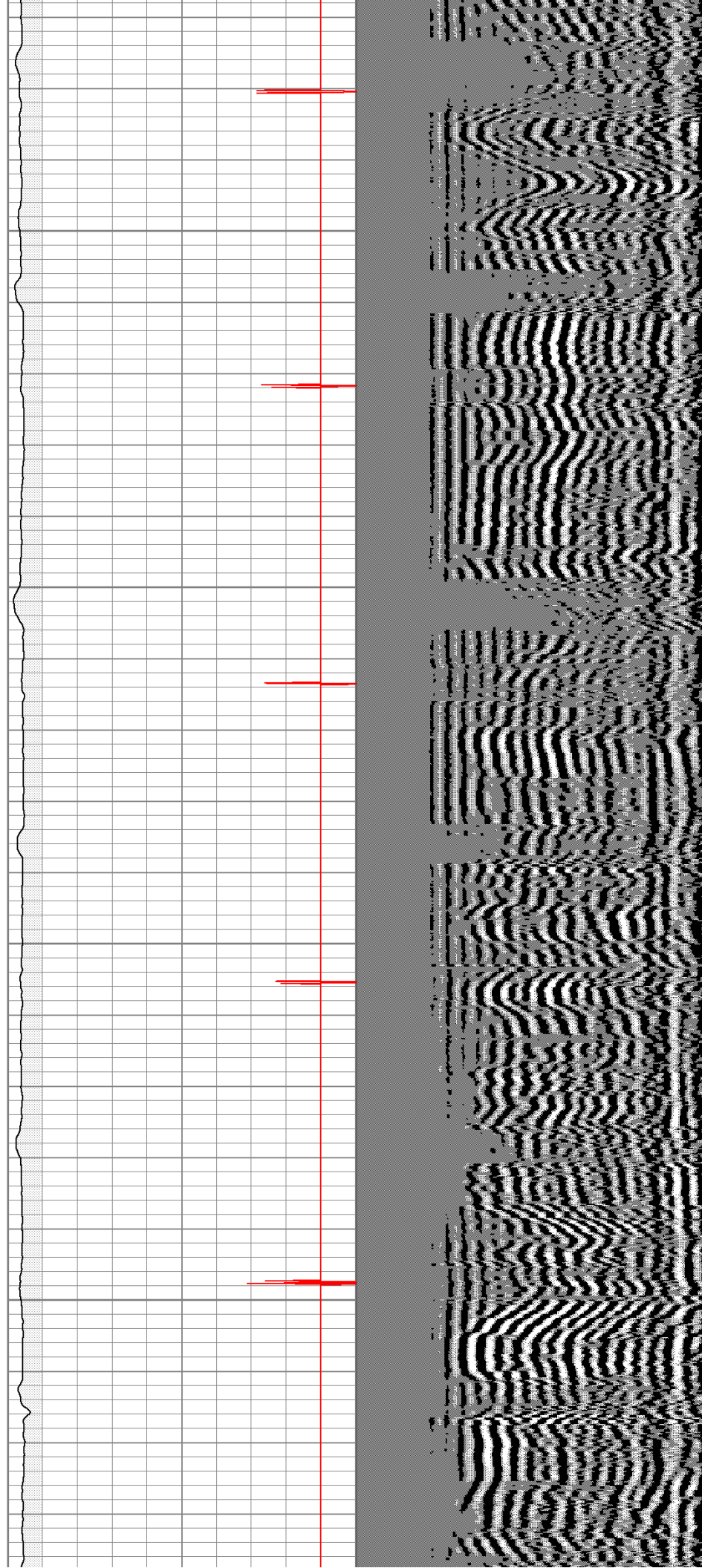


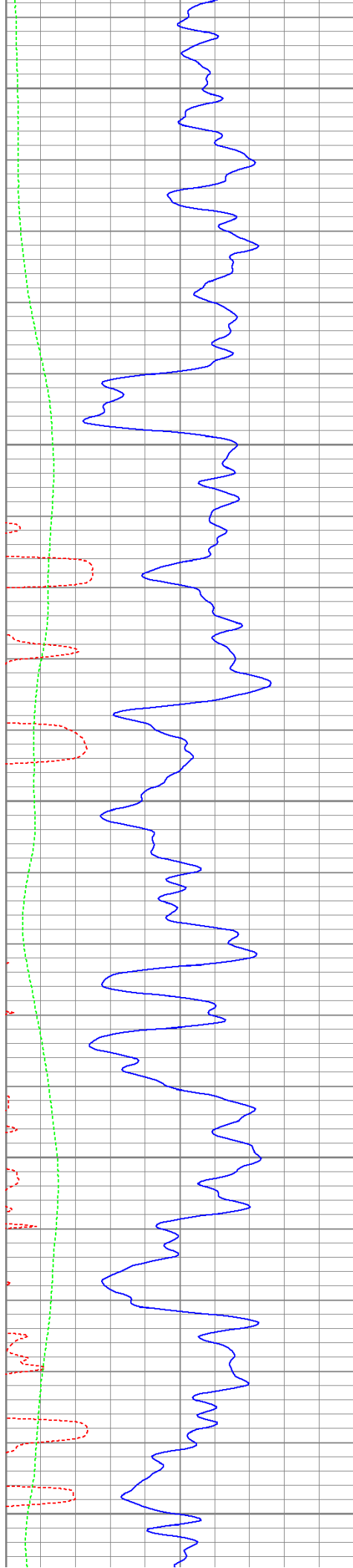
650

700

750

800





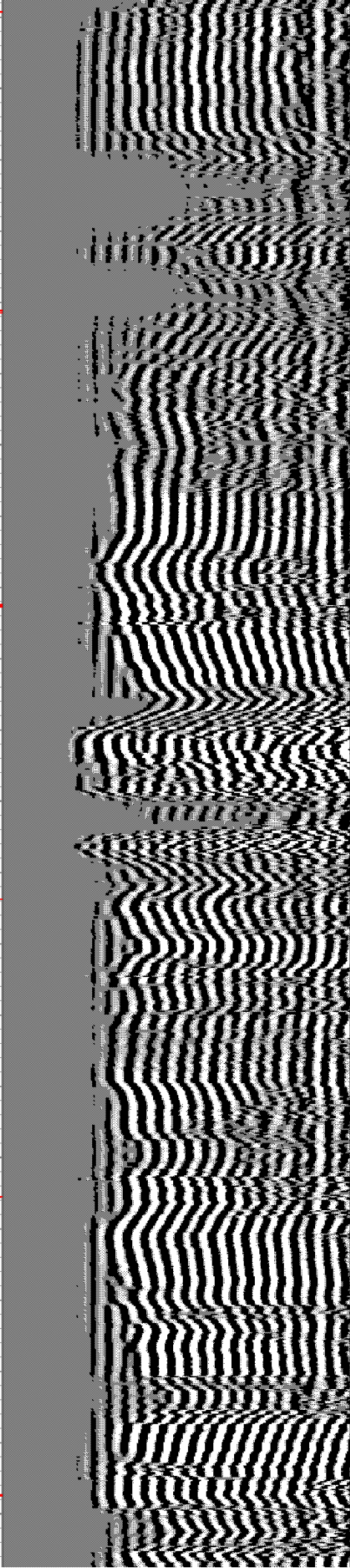
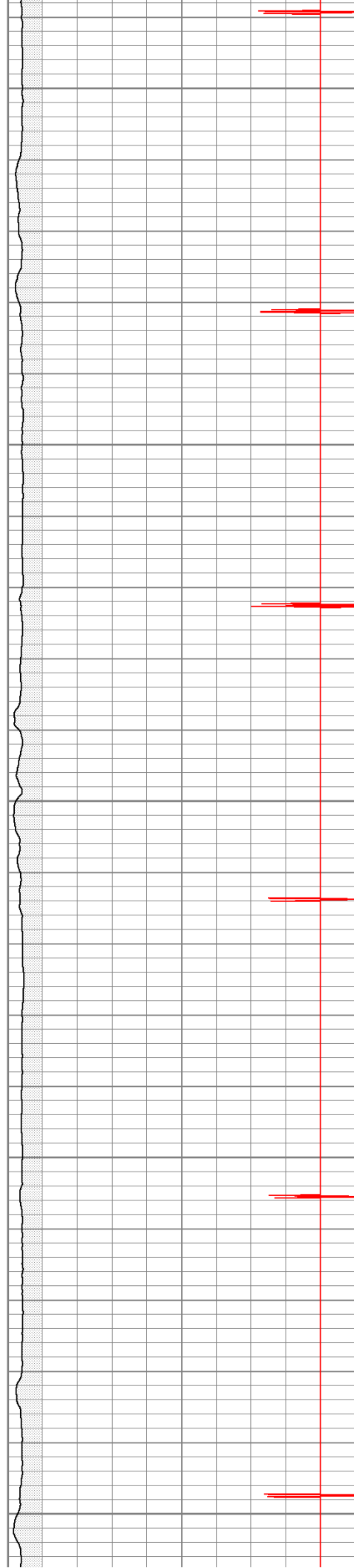
850

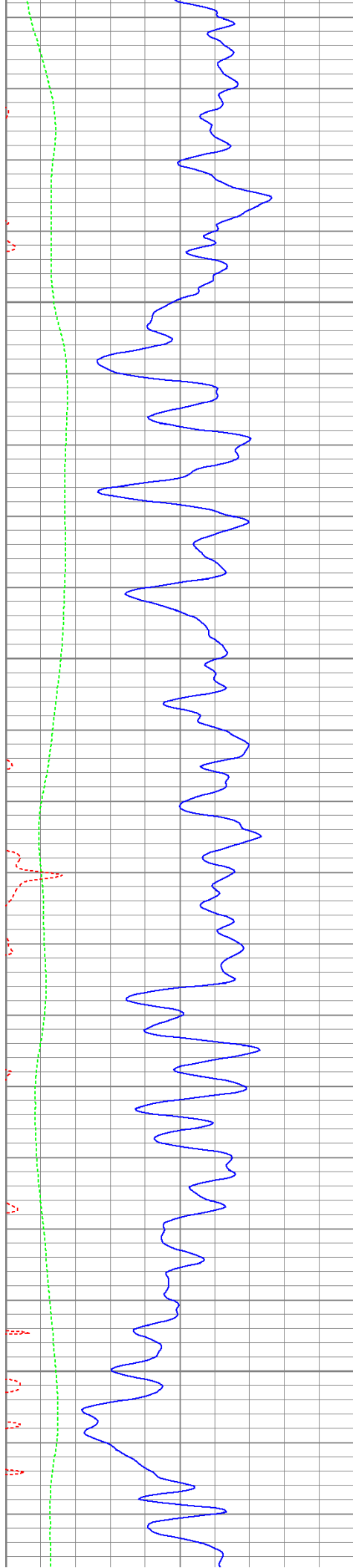
900

950

1000

1050



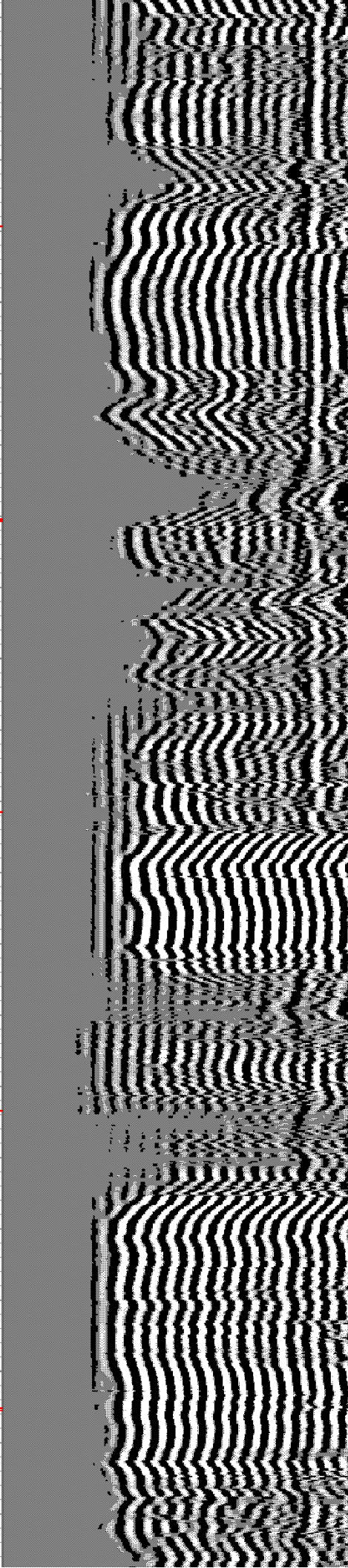
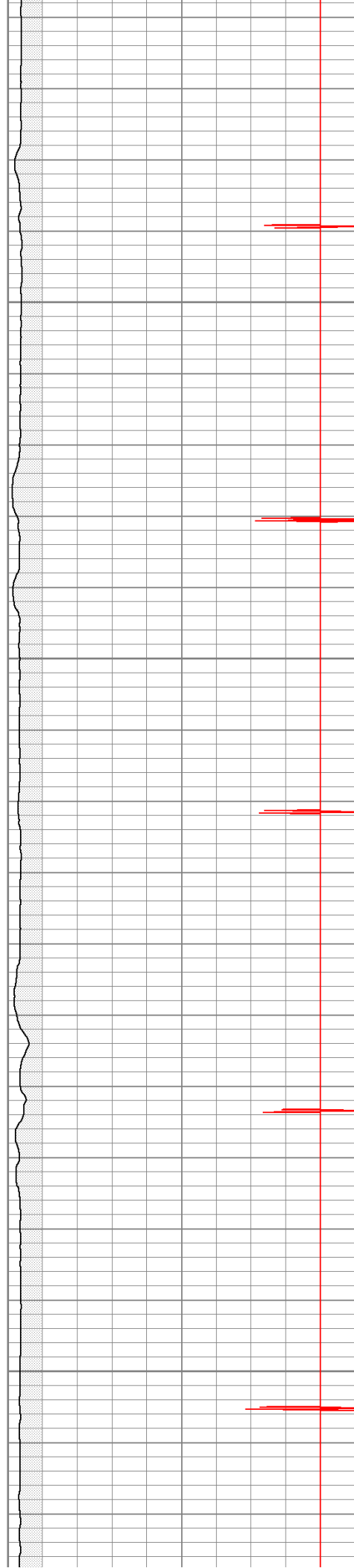


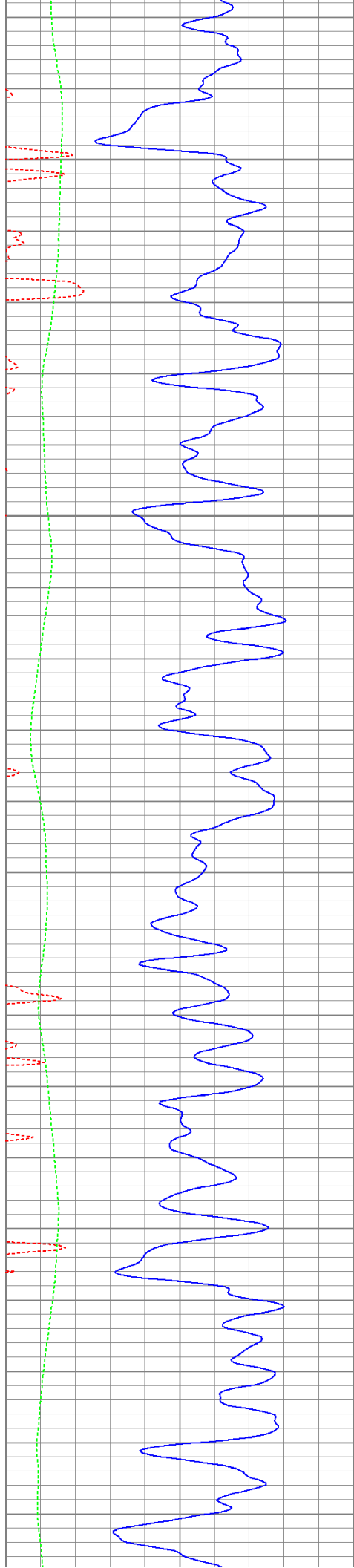
1100

1150

1200

1250



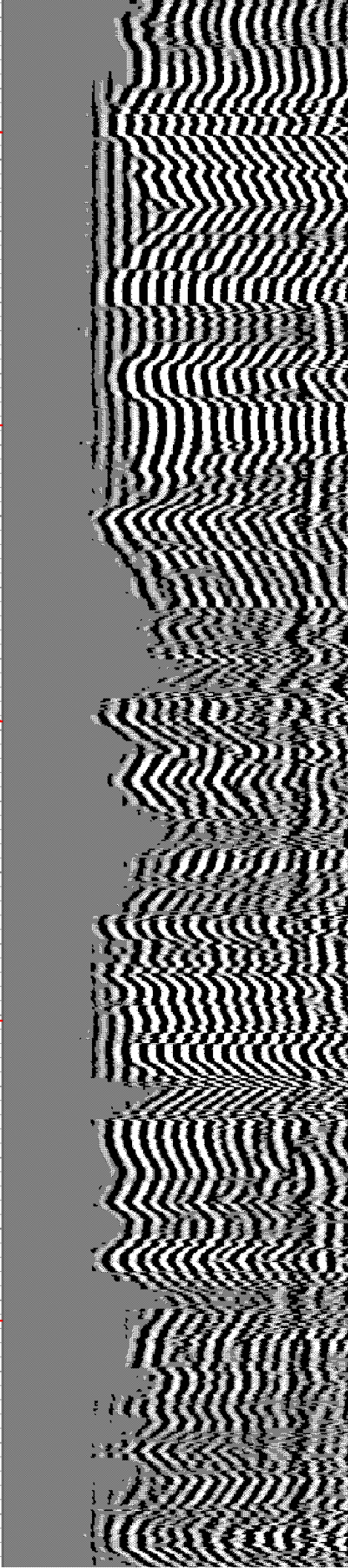
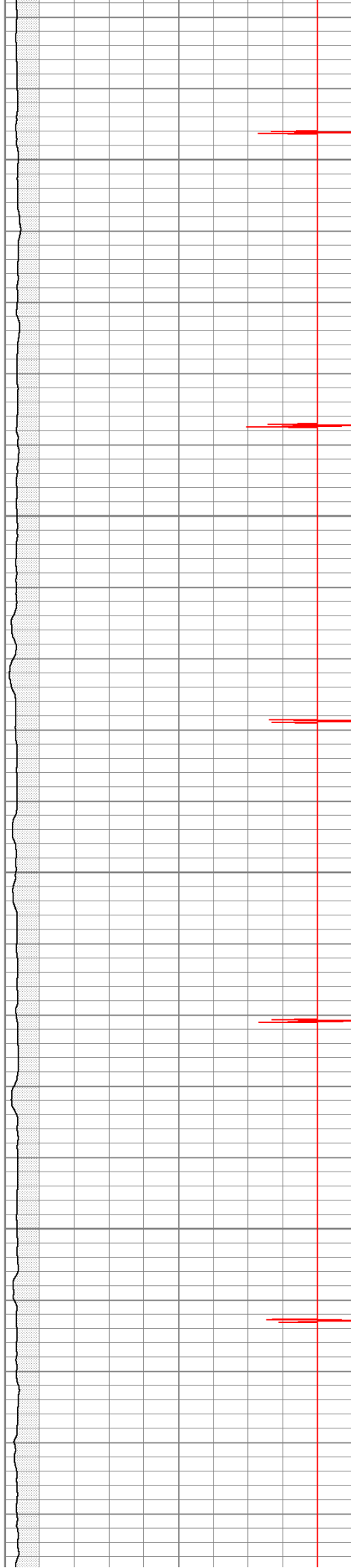


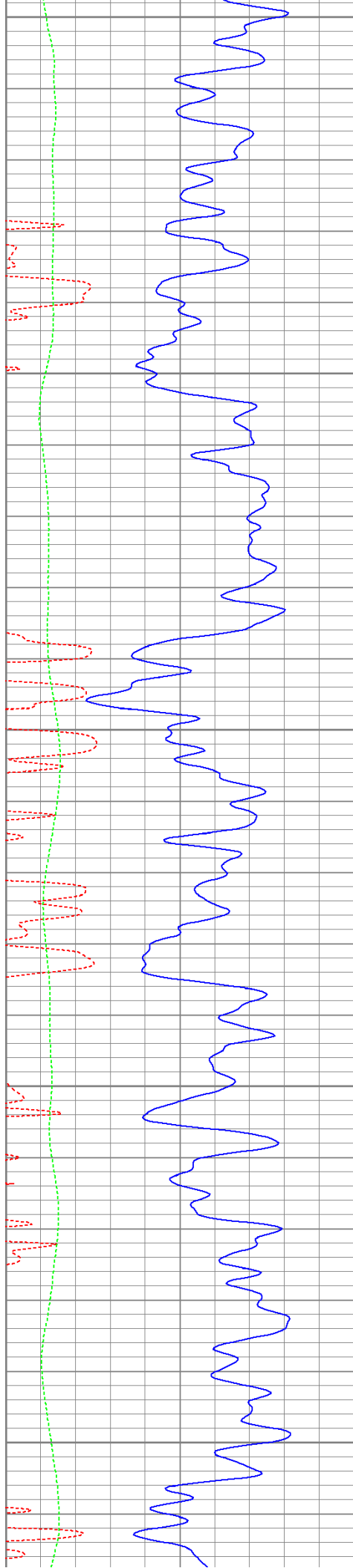
1300

1350

1400

1450





1500

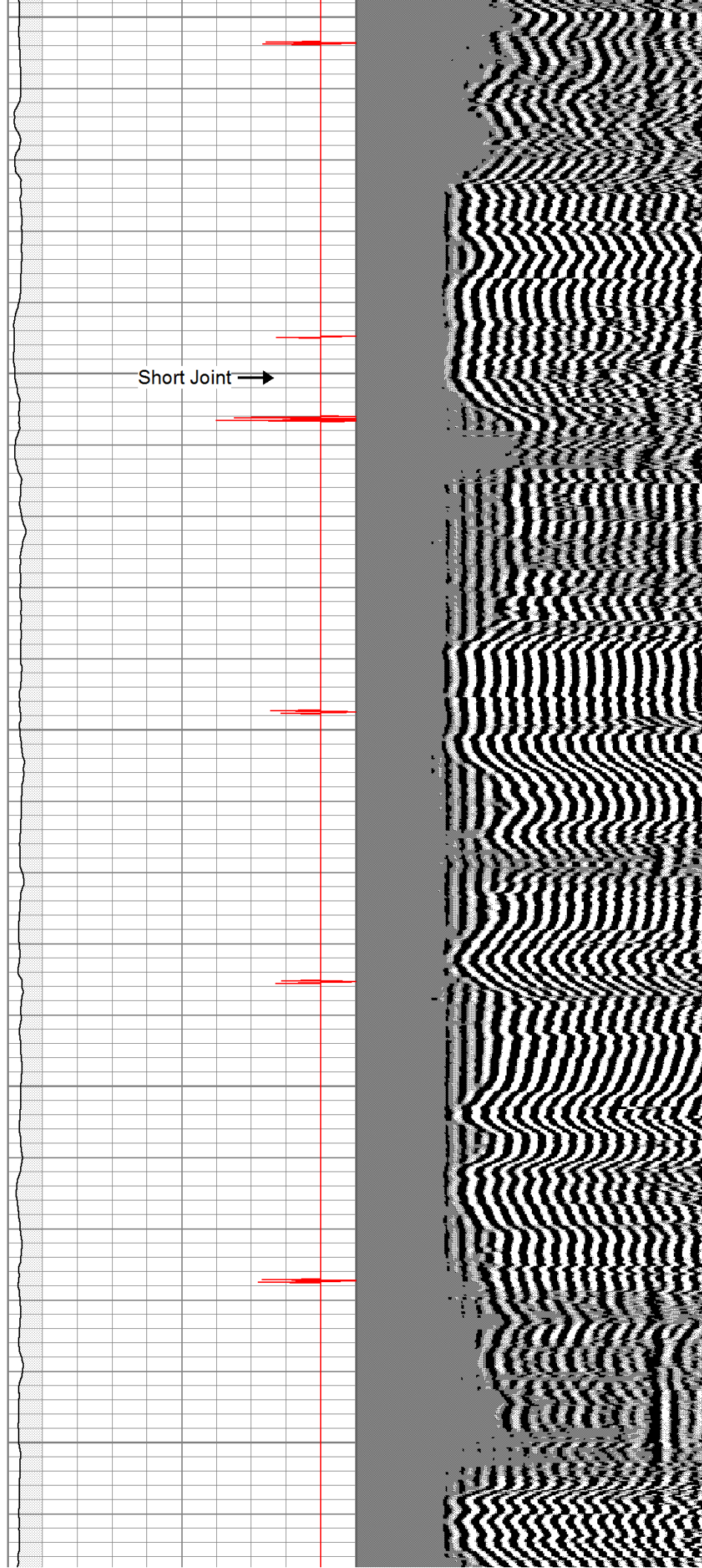
1550

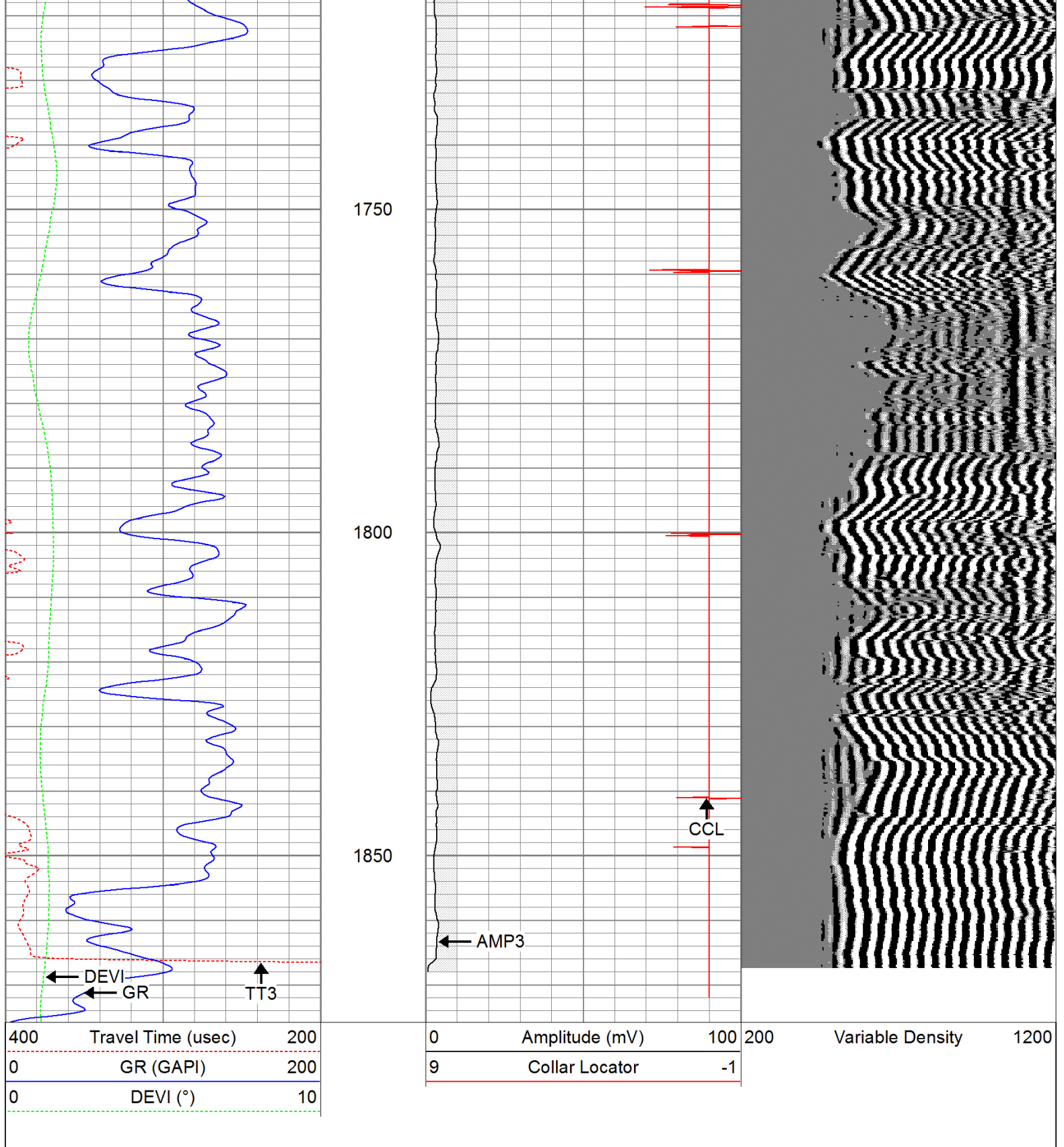
1600

1650

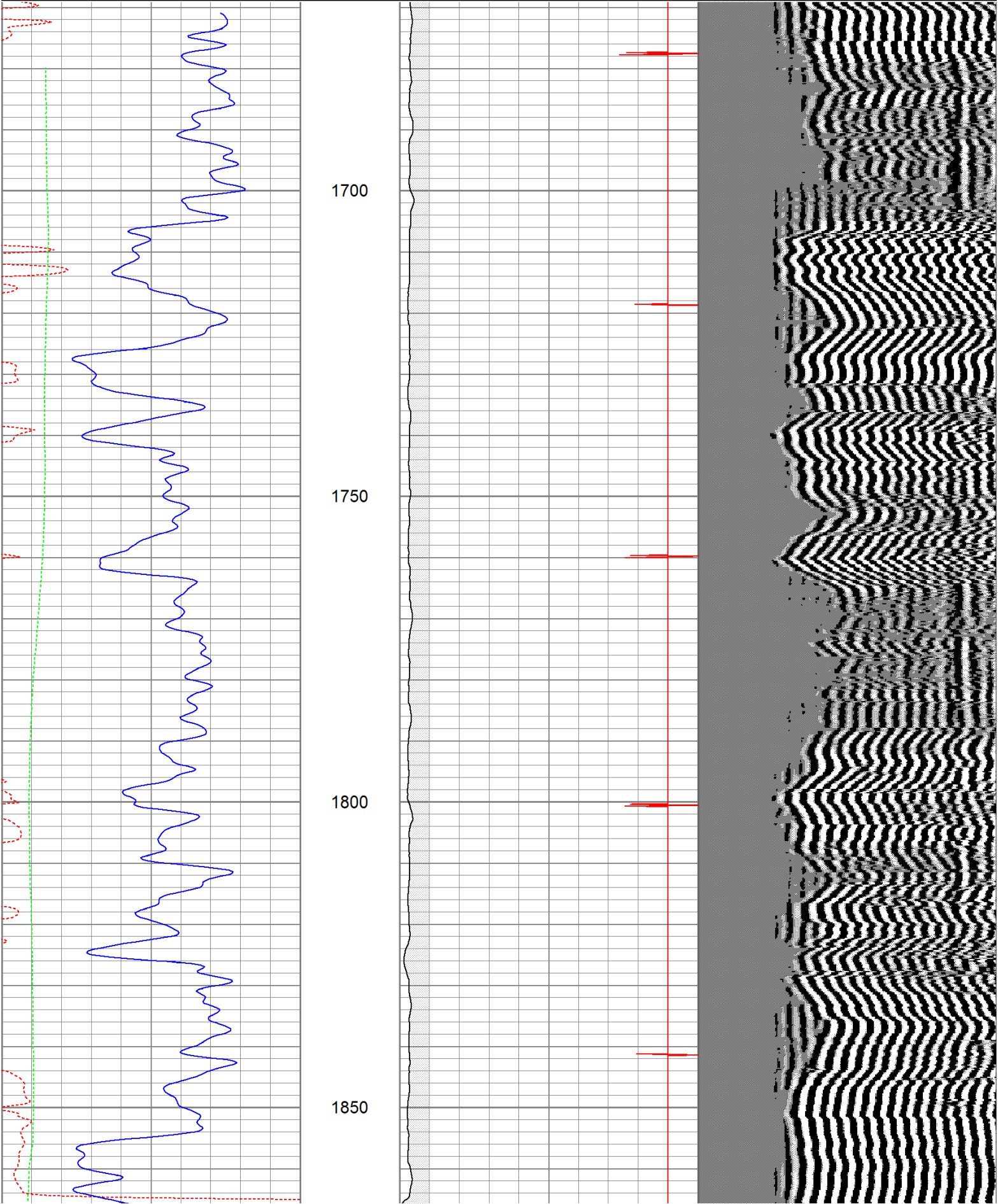
1700


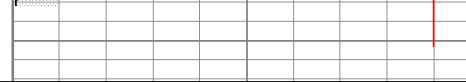
Short Joint →



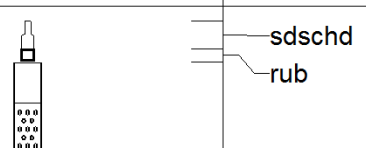


Charted by: Depth (m) Cor Coated 1.2 10								
400	Travel Time (usec)	200	0	Amplitude (mV)	100	200	Variable Density	1200
0	GR (GAPI)	200	9	Collar Locator	-1			
0	DEVI (°)	10						



								
400	Travel Time (usec)	200	0	Amplitude (mV)	100	200	Variable Density	1200
0	GR (GAPI)	200	9	Collar Locator	-1			
0	DEVI (°)	10						

Calibration Report					
Database File:		lyntr62211b.db			
Dataset Pathname:		pass2			
Dataset Creation:		Thu Jun 23 11:54:30 2011 by Log Std Casedhole 10121			
Gamma Ray Calibration Report					
Serial Number:		275D_with_INC			
Tool Model:		275D_INC			
Performed:		Thu Jun 23 11:41:51 2011			
Calibrator Value:		200.0	GAPI		
Background Reading:		50.0	cps		
Calibrator Reading:		250.0	cps		
Sensitivity:		1.0000	GAPI/cps		
Inclinometer Calibration Report					
Performed:		Thu Sep 02 13:30:15 2010			
		Low Read.	High Read.	Low Ref.	High Ref.
X Accelerometer		-3589.40	3580.00	-1.00	1.00 gee
Y Accelerometer		-3671.40	3520.20	-1.00	1.00 gee
Z Accelerometer					
Cement Bond Log Calibration Report					
Serial Number:		080201			
Tool Model:		DigitalCBL			
Performed:		Thu Jun 23 11:41:28 2011			
Depth:		31.6583	ft		
Casing Diameter:		5.5	in		
		3' Spacing		5' Spacing	
Signal Zero:		1	0	mV	
Calibrated Amplitude:		85	85	mV	
Reading at Signal Zero:		0.00246582	0.00244141	V	
Reading in Free Pipe:		1.08176	0.940771	V	
Gain:		77.8284	90.5865		
Offset:		0.808089	-0.221158		

Sensor	Offset (ft)	Schematic	Description	Len (ft)	OD (in)	Wt (lb)
			sdschd	0.75	1.44	3.00
			rub	0.33	1.75	0.80

[illegible]