

Company	Pioneer Natural Resources	Company	Pioneer Natural Resources
Well	Lynn 32-4 Tr	Well	Lynn 32-4 Tr
Field	Purgatoire River	Field	Purgatoire River
County	Las Animas	County	Las Animas
State	Colorado	State	Colorado
Location:	API #: 05 071 09712 00 2128' FNL & 1614' FEL		
Permanent Datum	SEC 4	TWP 33S	RGE 67W
Log Measured From	Ground Level	Elevation	7531'
Drilling Measured From	Kelly Bushing 4' AGL	CDNL	
	Kelly Bushing	Elevation	K.B. 7535' D.F. ----- G.L. 7531'
Date	6-12-11		
Run Number	One		
Depth Driller	1935'		
Depth Logger	1902'		
Bottom Logged Interval	1898'		
Top Log Interval	Surface Casing		
Casing Driller	8 5/8" @ 536'		
Casing Logger	535'		
Bit Size	7 7/8"		
Type Fluid in Hole	Airated Water		
Density / Viscosity	///		
pH / Fluid Loss	///		
Source of Sample	///		
Rm @ Meas. Temp	///		
Rmf @ Meas. Temp	///		
Rmc @ Meas. Temp	///		
Source of Rmf / Rmc	///		
Rm @ BHT	///		
Time Circulation Stopped	1:00 A.M.		
Time Logger on Bottom	3:30 A.M.		
Maximum Recorded Temperature	102 DEG F		
Equipment Number	T590		
Location	Trinidad		
Recorded By	C. Sisneros		
Witnessed By	Mr. Derrick Berry		

<<< Fold Here >>>

All interpretations are opinions based on inferences from electrical or other measurements and we cannot and do not guarantee the accuracy or correctness of any interpretation, and we shall not, except in the case of gross or willful negligence on our part, be liable or responsible for any loss, costs, damages, or expenses incurred or sustained by anyone resulting from any interpretation made by any of our officers, agents or employees. These interpretations are also subject to our general terms and conditions set out in our current Price Schedule.

### Comments

Directions:  
Wet Canyon, turn left up Cougar Ridge, 2nd left to location.

Database File: lynntr.db  
Dataset Pathname: pass2.1  
Presentation Format: iel  
Dataset Creation: Sun Jun 12 20:02:34 2011 by Calc Open-Cased 110302  
Charted by: Depth in Feet scaled 1:240

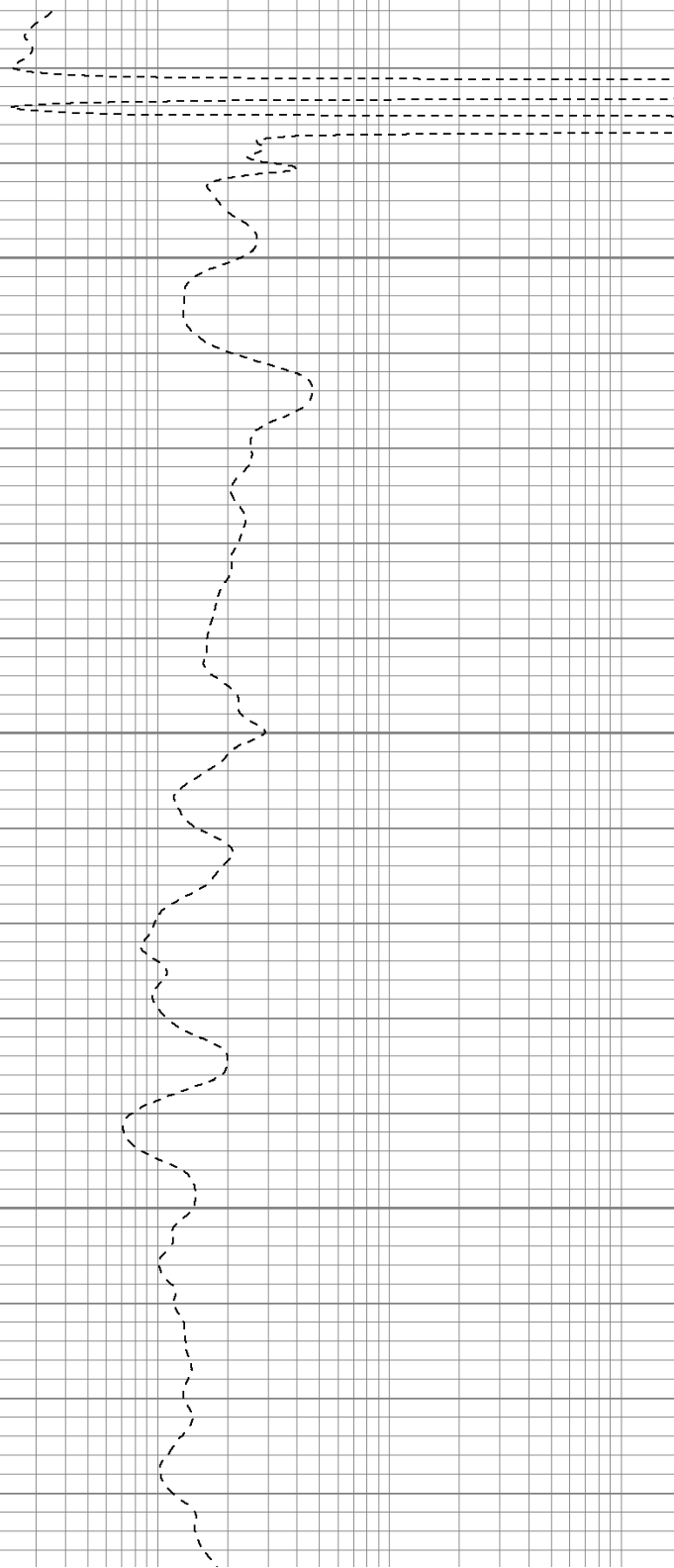
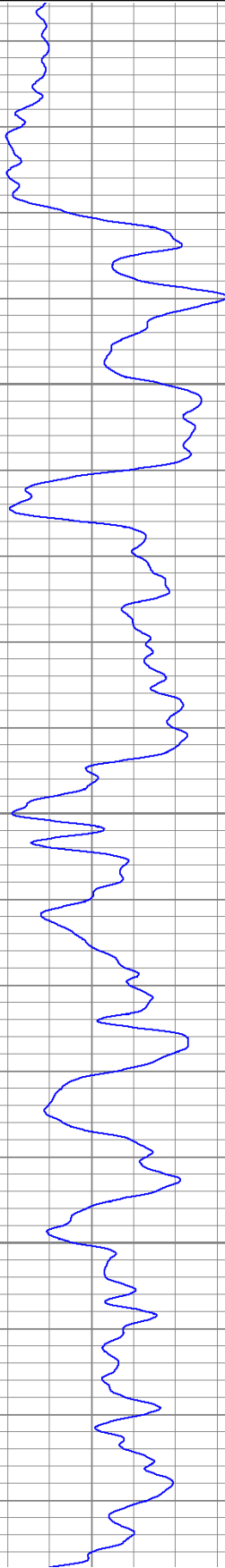
0	GR (GAPI)	200	0.2	DIR (Ohm-m)	2000
-200	SP (mV)	0	0.2	SN (Ohm-m)	2000

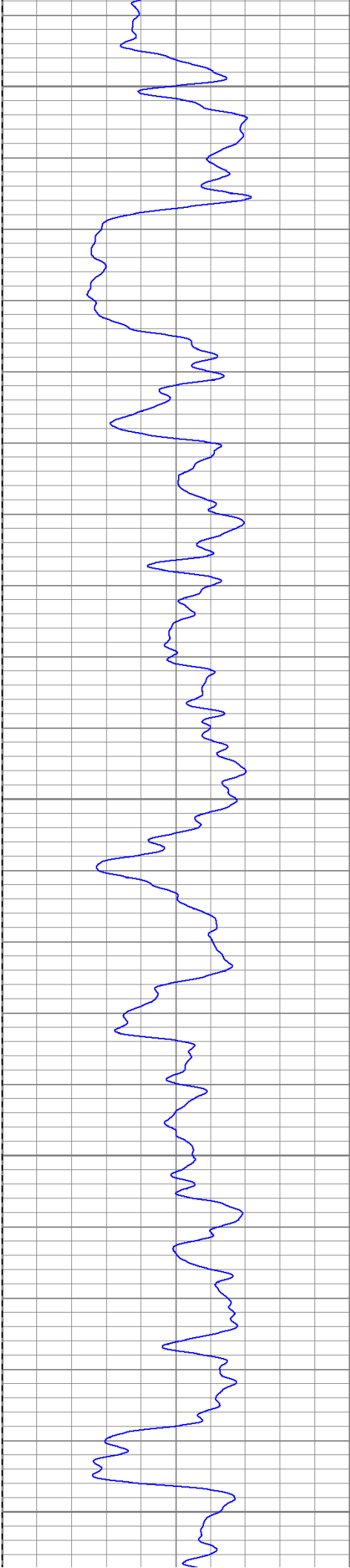
Surface Casing

550

600

650





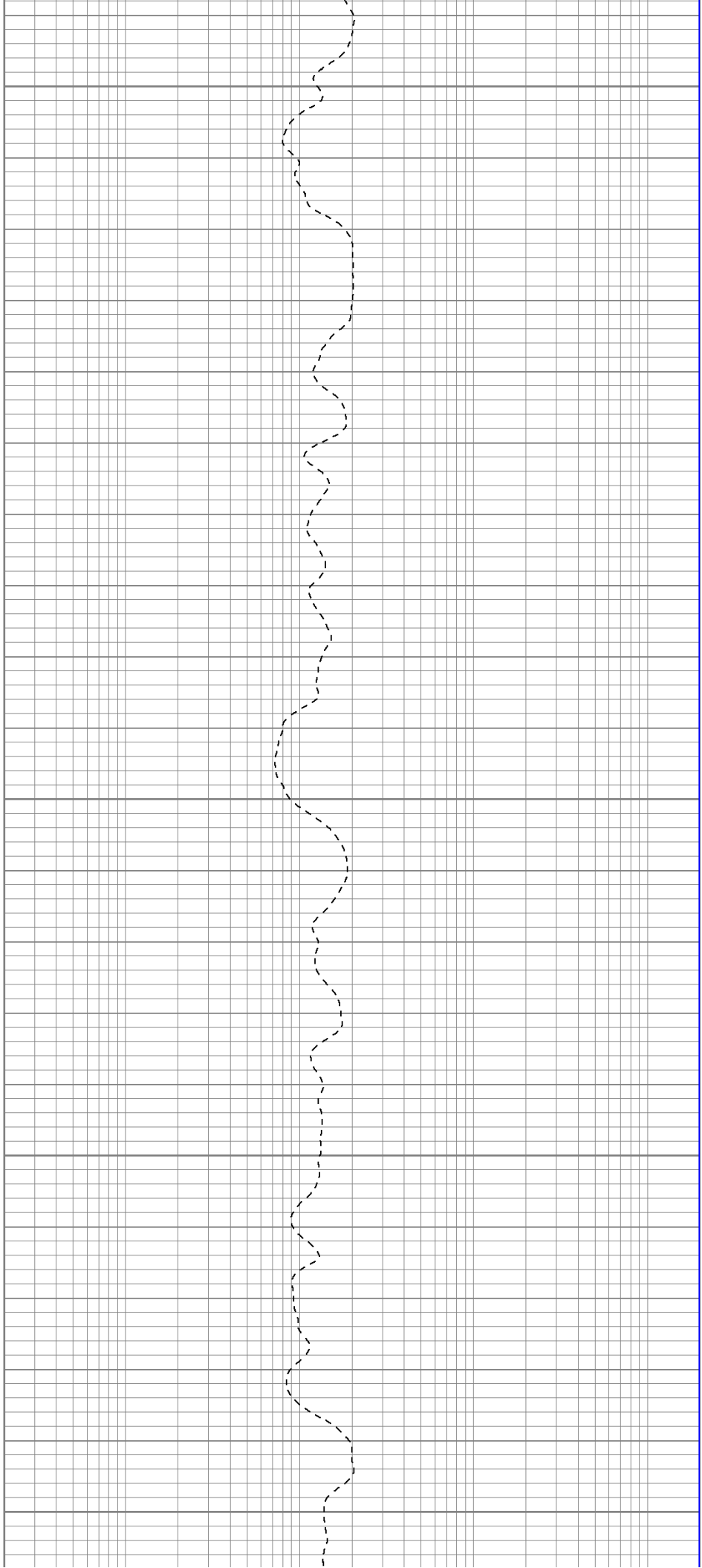
700

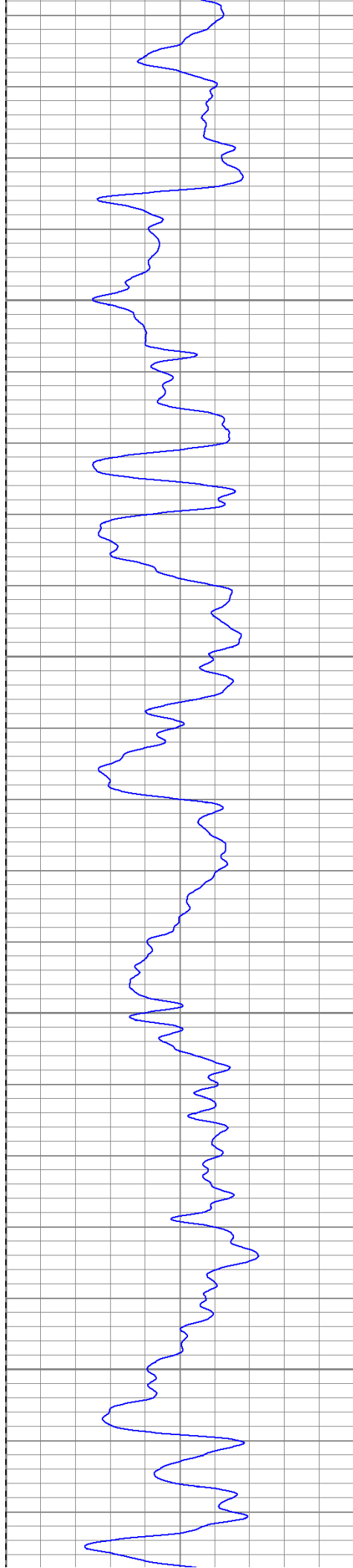
750

800

850

900



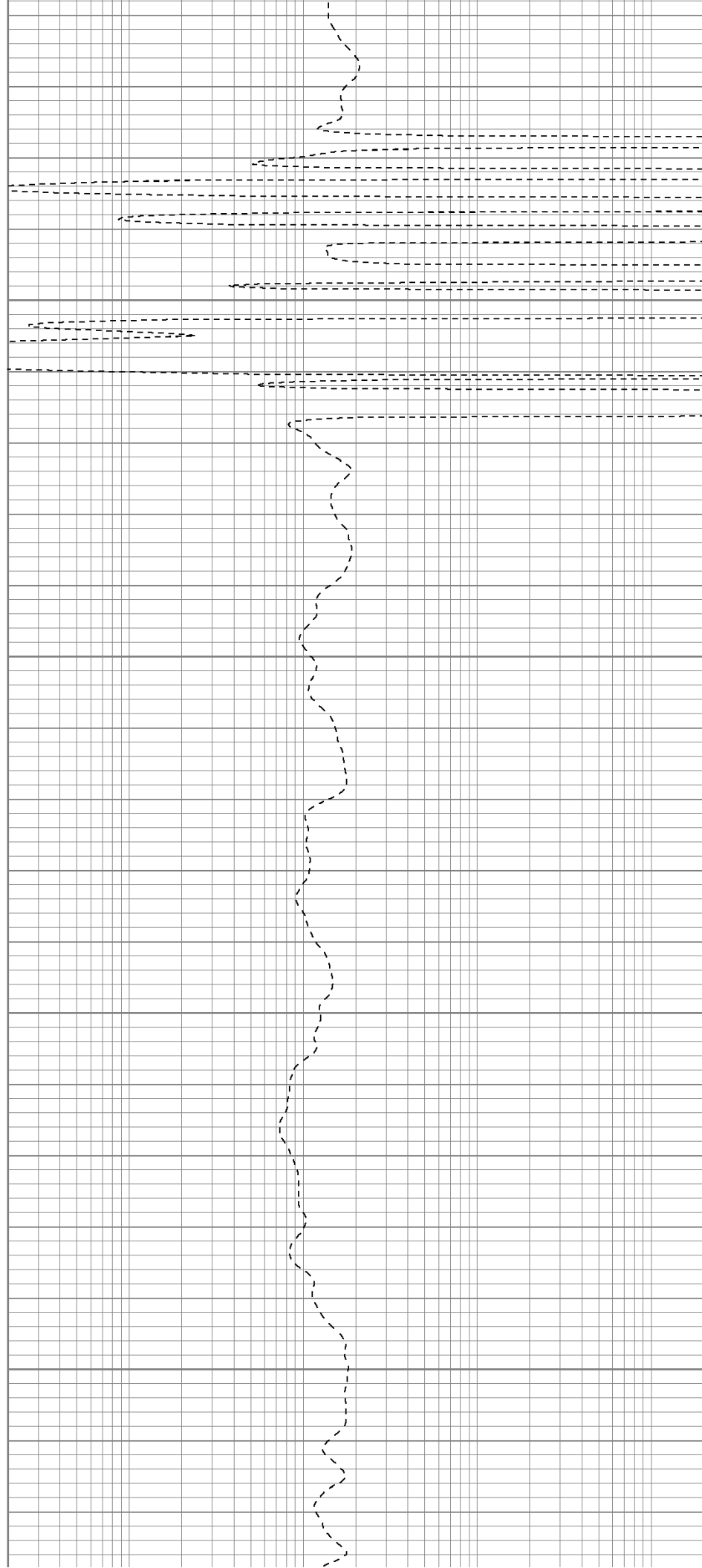


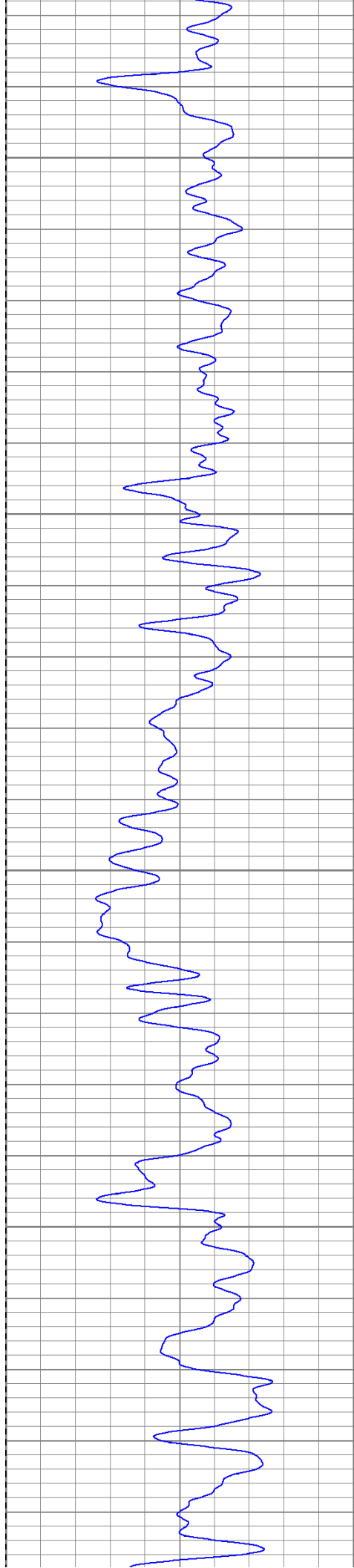
950

1000

1050

1100



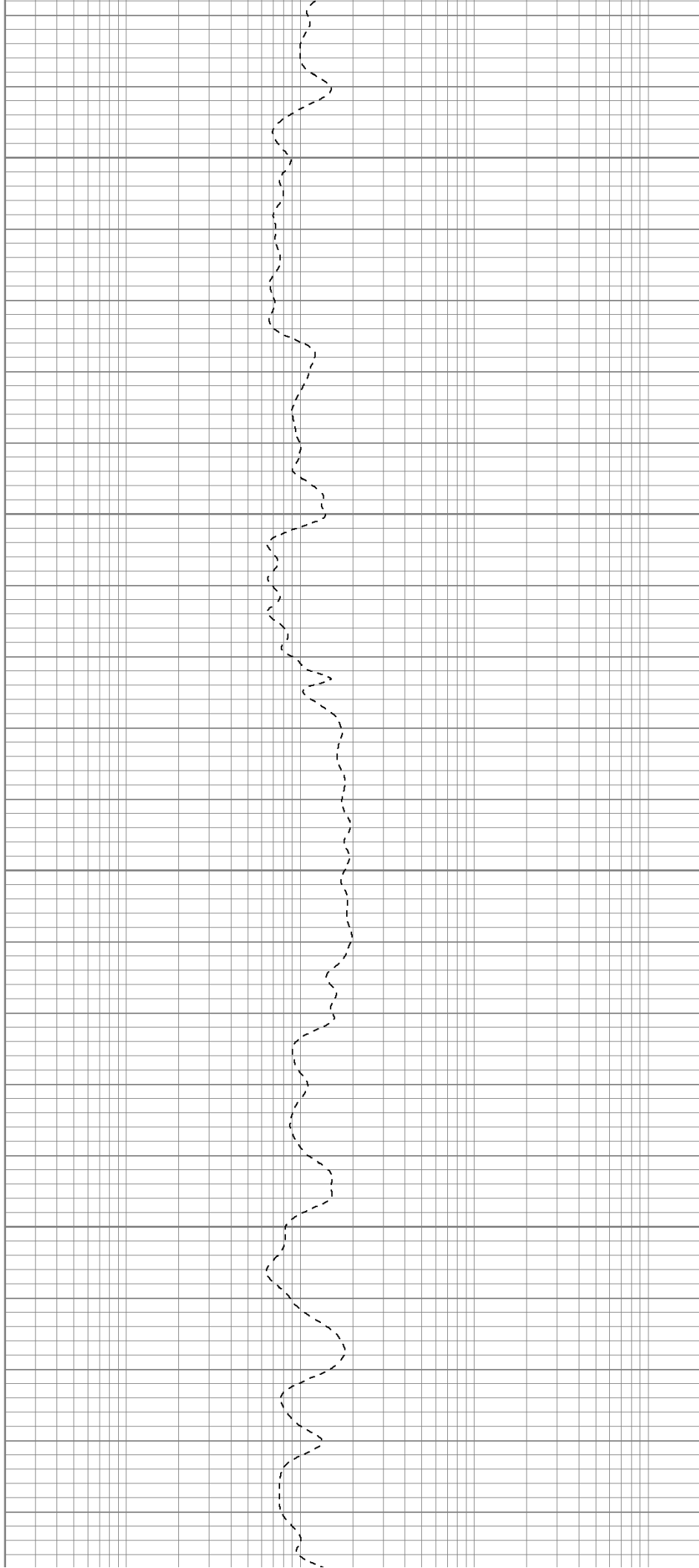


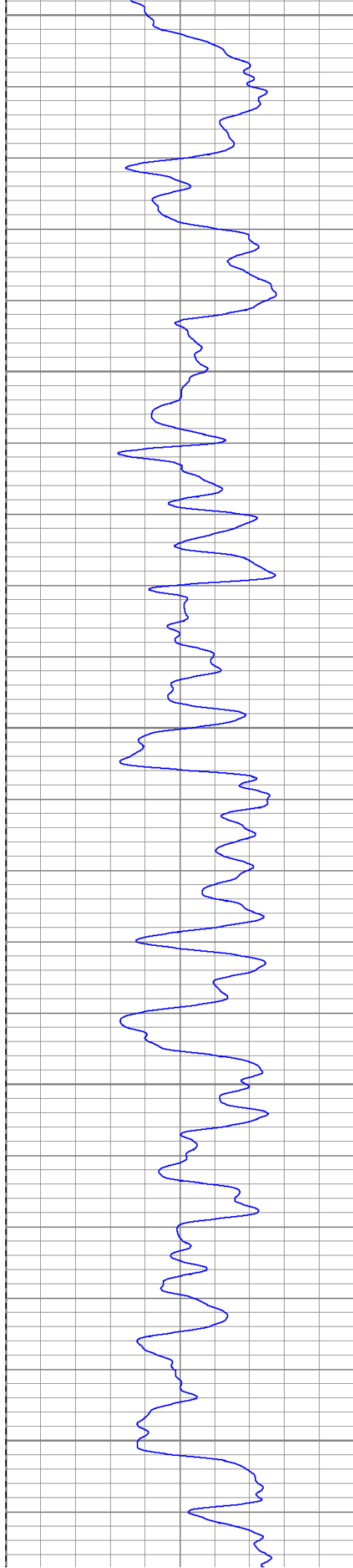
1150

1200

1250

1300





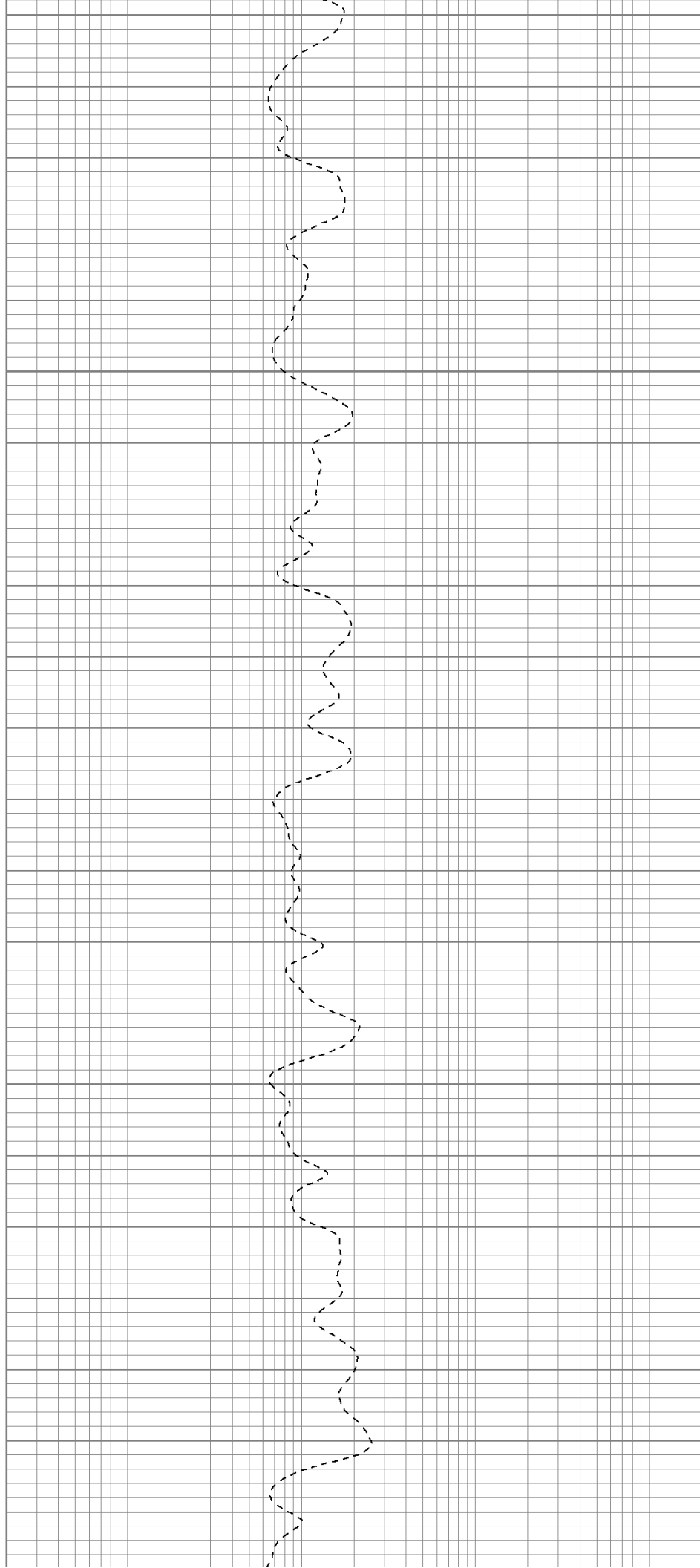
1350

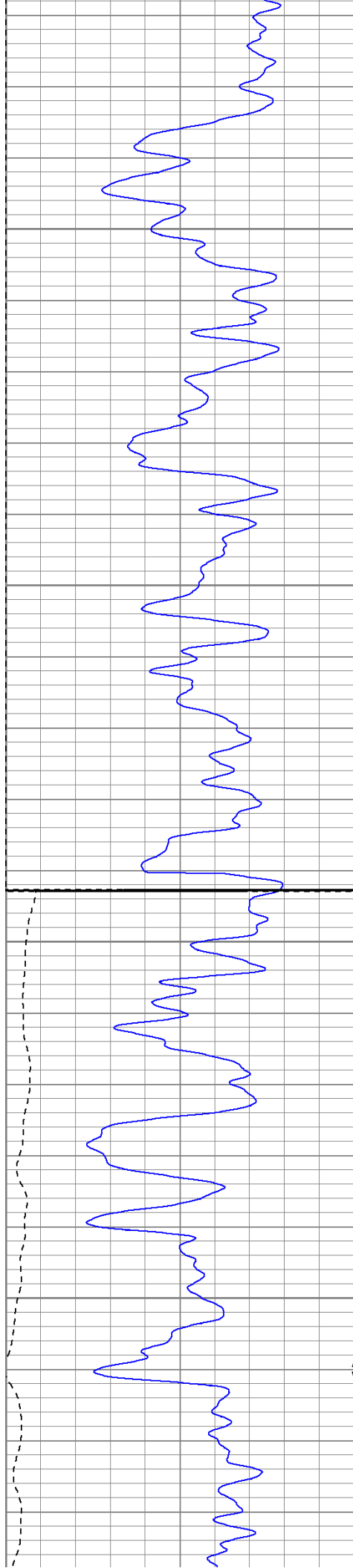
1400

1450

1500

1550





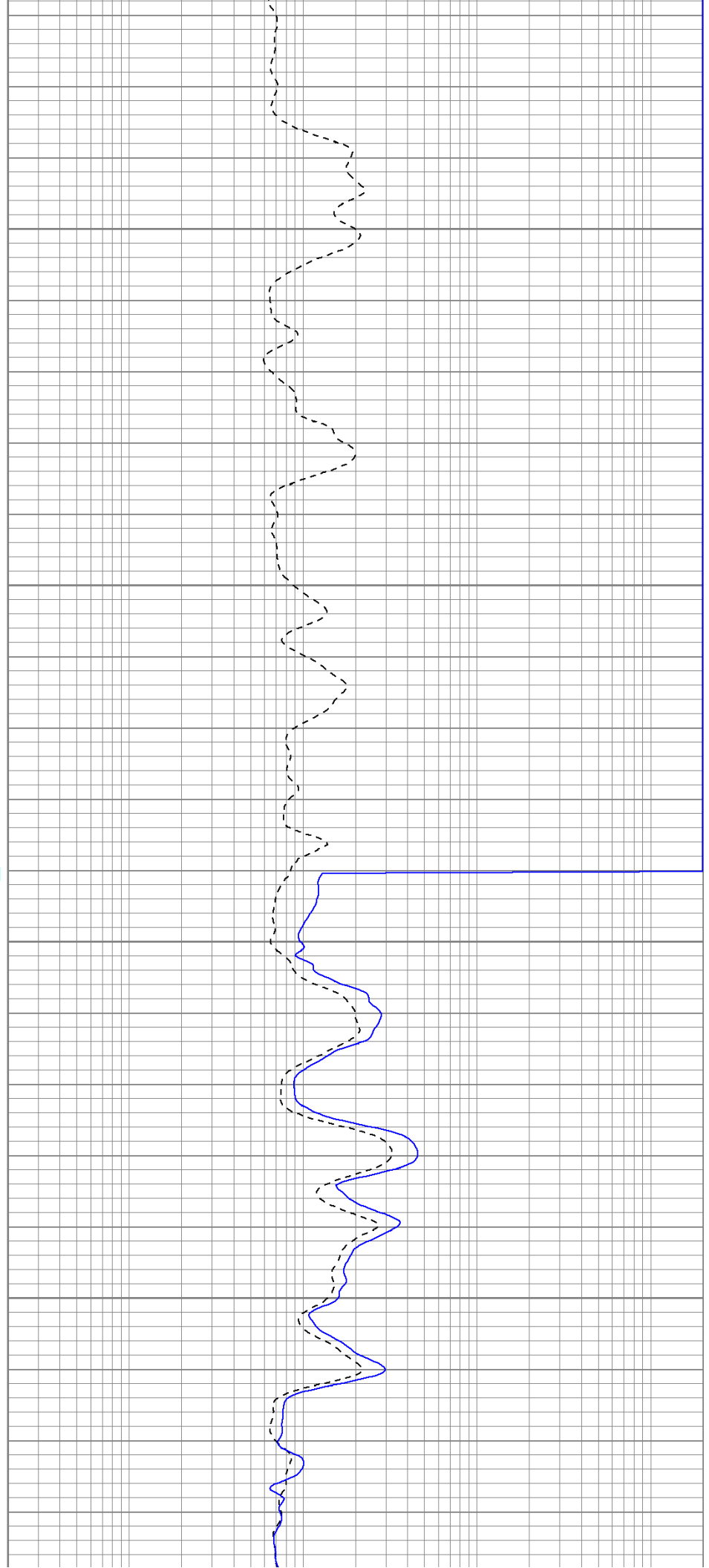
1600

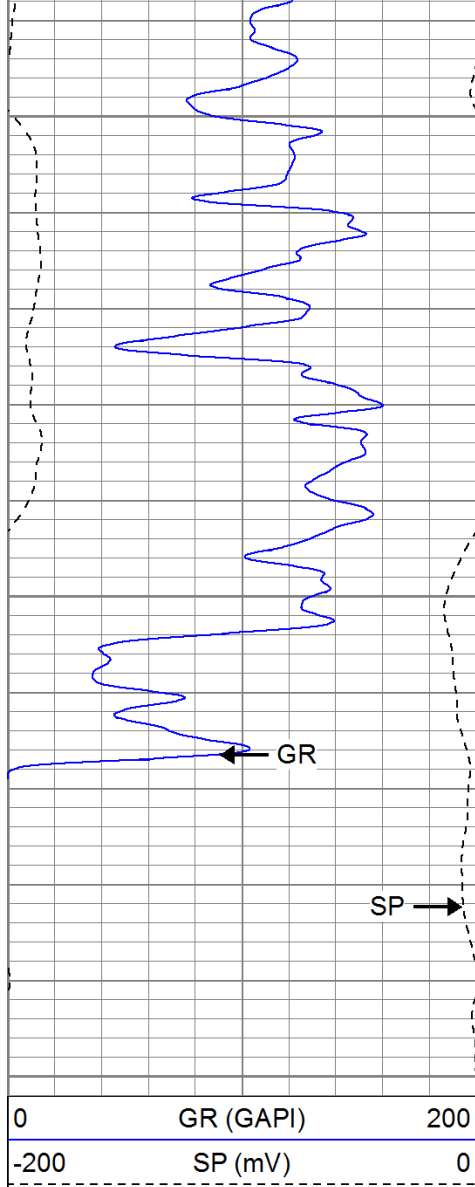
1650

Fluid Level

1700

1750

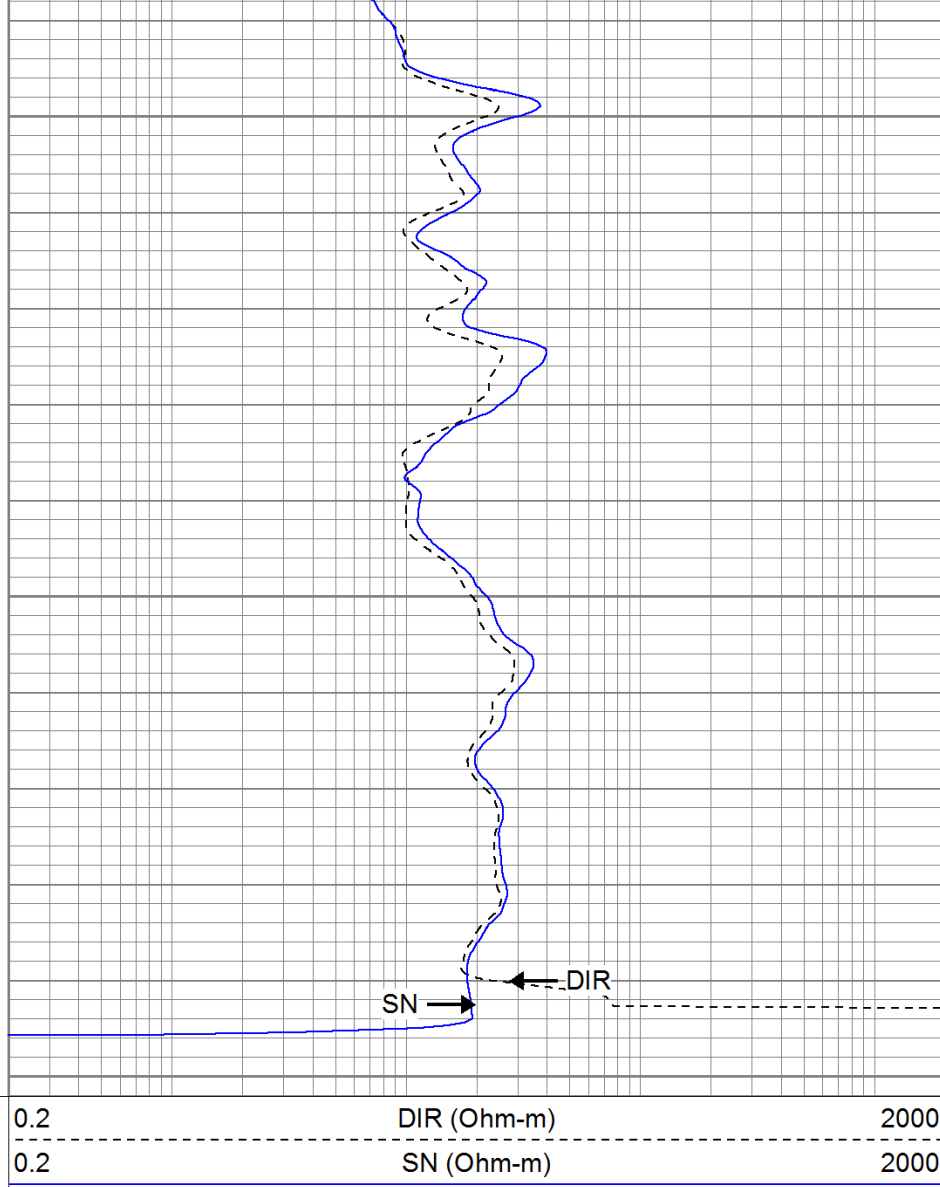




1800

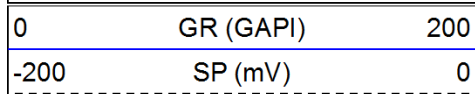
1850

1900

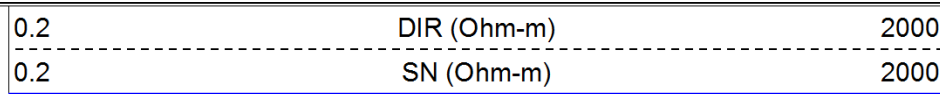


# Repeat Pass

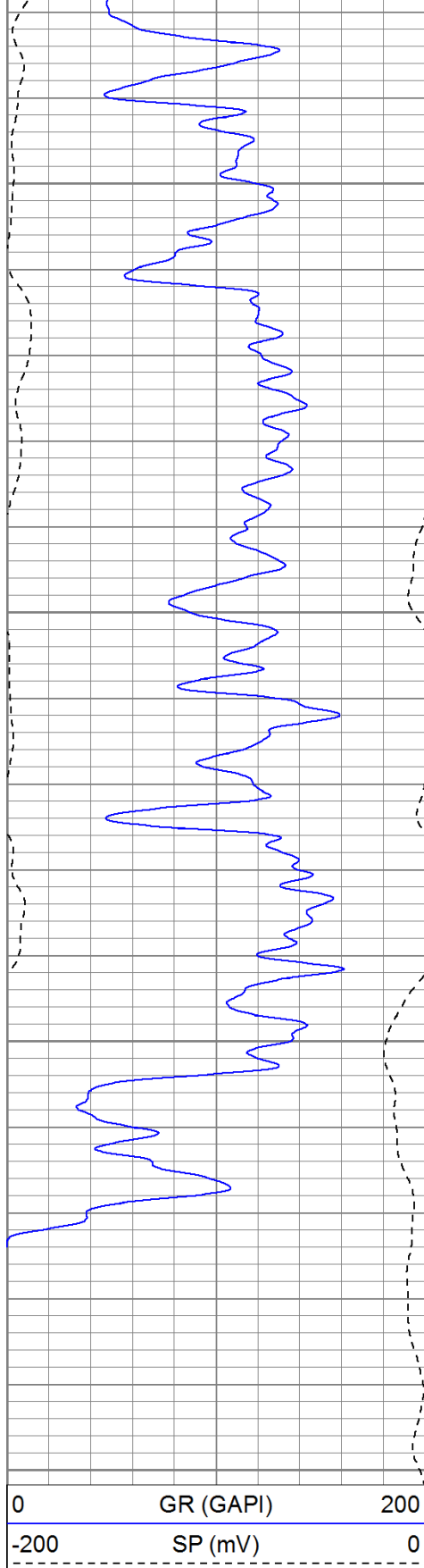
Database File: lynnr.db  
 Dataset Pathname: pass1.1  
 Presentation Format: iel  
 Dataset Creation: Sun Jun 12 20:16:22 2011 by Calc Open-Cased 110302  
 Charted by: Depth in Feet scaled 1:240



1700





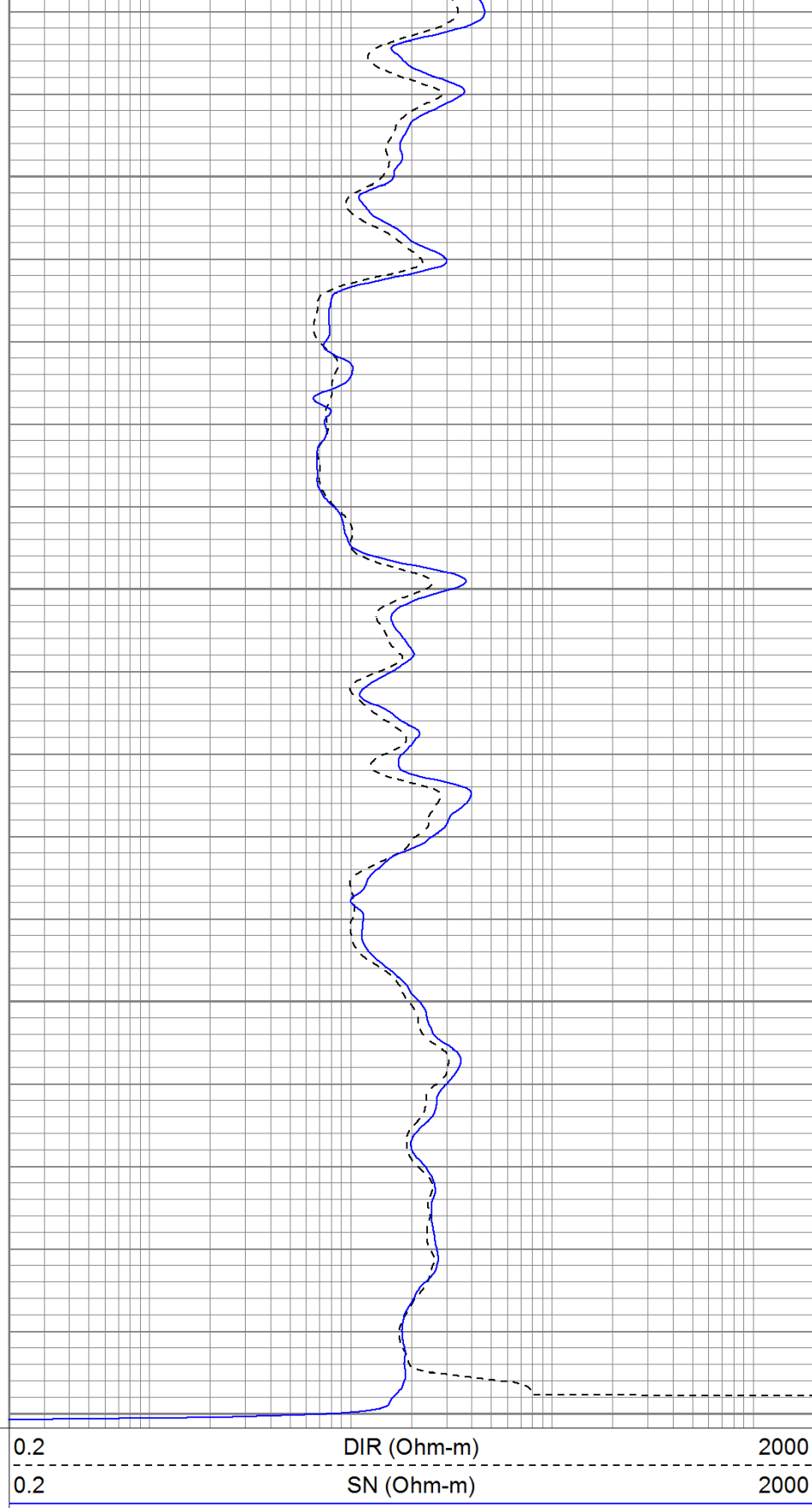


1750

1800

1850

1900



### Calibration Report

Database File: lynntr.db  
 Dataset Pathname: pass1  
 Dataset Creation: Sun Jun 12 03:41:05 2011 by Log Open-Cased 110302

### Induction Tool Calibration Report

Serial Number:





701

Tool Model: Downhole Cal Performed: Surface Cal Performed: After Survey Verification Performed:		Probe Wed Jun 08 22:14:25 2011 Wed Jun 08 22:14:40 2011	
Surface Calibration: Conductivity Reference: Conductivity Reading: Internal Reference: Conductivity Reference: Conductivity Reading:		Air 0.000 0.006 Zero 0.000 0.007	
		Loop 500.000 0.644 Cal 500.000 0.643	
		mmho V mmho V	
Downhole Calibration: Conductivity Reference: Conductivity Reading: Short Normal Reference: Short Normal Reading:		Internal Zero 0.703 0.000 0.000 0.005	
		Internal Cal 499.163 0.000 20.000 0.214	
		mmho V Ohm-m V	
Results: Loop Conductivity: Downhole Correction: Short Normal Resistivity:		Gain 783.886 1.000 95.281	
		Offset -4.674 0.000 -0.432	
After Survey Verification Conductivity Reading: Conductivity Result: Short Normal Reading: Short Normal Result:		Internal Zero 0.000 0.000 0.000 0.000	
		Internal Cal 0.000 0.000 0.000 0.000	
		V mmho V Ohm-m	
Compensated Density Calibration Report			
Serial-Model: Source / Verifier: Master Calibration Performed: Before Survey Verification Performed: After Survey Verification Performed:		901-2.75POH / Wed Jun 08 09:11:26 2011	
Master Calibration			
	Density	Far Detector	Near Detector
Magnesium	1.710 g/cc	1001.79	578.48 cps
Aluminum	2.590 g/cc	180.36	300.39 cps
Spine Angle = 69.08		Density/Spine Ratio = 0.479	
	Size	Reading	
Small Ring	8.00 in	2.50	V
Large Ring	16.00 in	4.57	V
Before Survey Verification			
	Target	Measured	
	g/cc	g/cc	
	g/cc	g/cc	
	g/cc	g/cc	
After Survey Verification			
	Target	Measured	
	g/cc	g/cc	
	g/cc	g/cc	
	g/cc	g/cc	
Neutron Calibration Report			

Serial Number: 802  
 Tool Model: 2.75POH  
 Performed: Tue May 03 12:28:21 2011  
  
 Calibrator Value: 700 NAPI  
  
 Calibrator Reading: 1000 cps  
  
 Sensitivity: 0.7 NAPI/cps

### Gamma Ray Calibration Report

Serial Number: 801  
 Tool Model: 2.75POH  
 Performed: Thu May 05 13:29:10 2011  
  
 Calibrator Value: 200.0 GAPI  
  
 Background Reading: 8.0 cps  
 Calibrator Reading: 264.7 cps  
  
 Sensitivity: 0.6000 GAPI/cps

Sensor	Offset (ft)	Schematic	Description	Len (ft)	OD (in)	Wt (lb)
GR	29.58		None	0.75	1.50	5.00
			GR-2.75POH (801) Probe 2.75" Probe Open Hole Gamma Ray	3.73	2.75	43.00
NEU	24.04		NEU-2.75POH (802) Probe Epithermal	4.75	2.75	58.00
			CDL-2.75POH (901) Probe	8.43	2.75	106.00
LSD	16.21					
DCAL	15.94					
SSD	15.69					
DIC	6.24		IEL-Probe (701)	13.46	2.75	93.00

