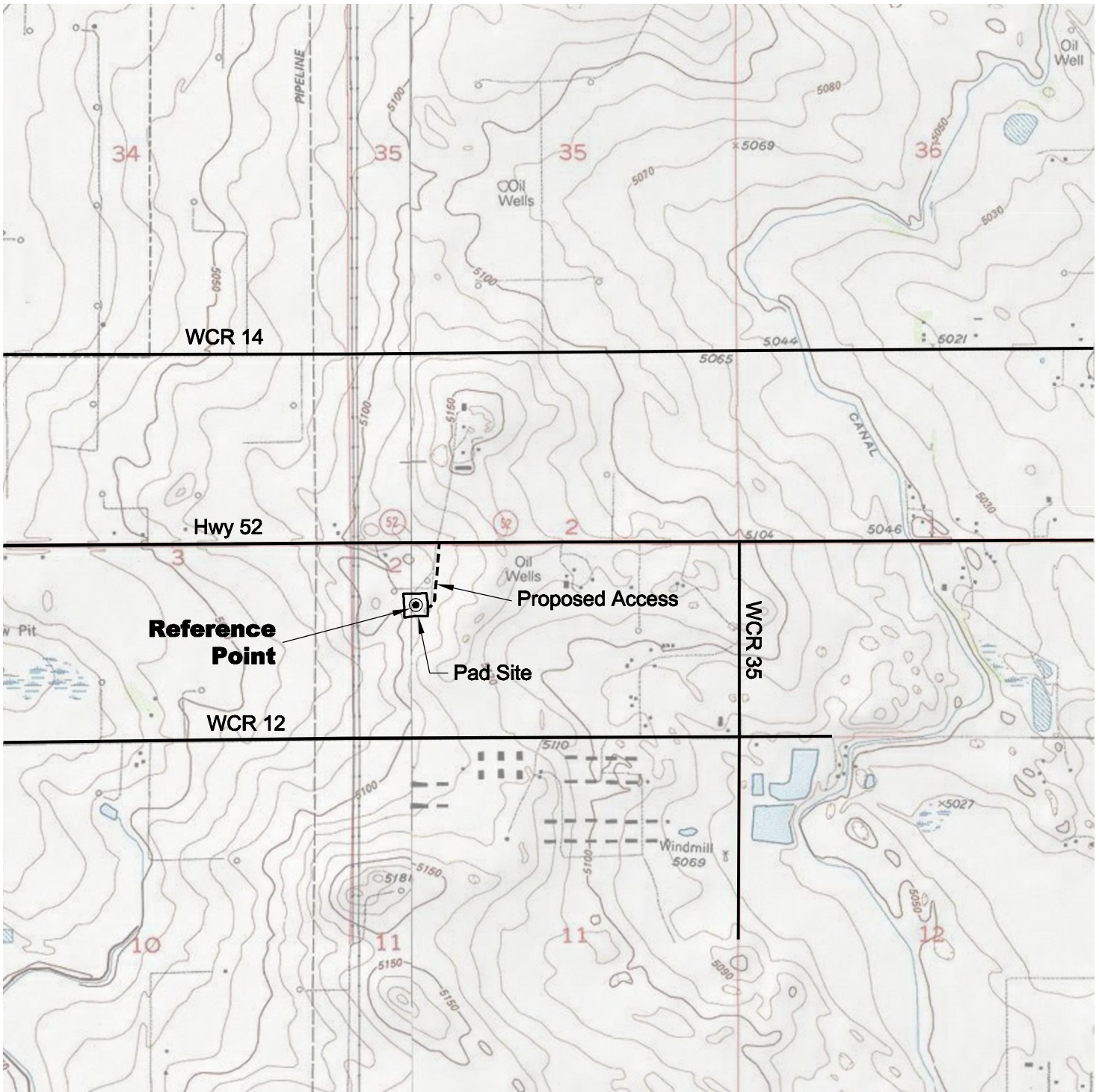


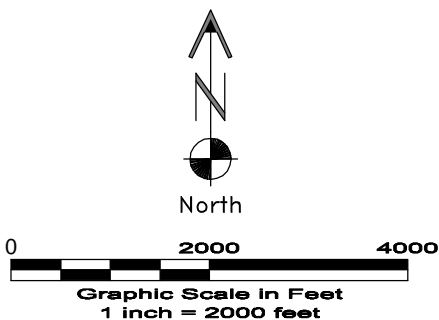
ACCESS ROAD MAP



DRIVING DIRECTIONS:

From Town of Fort Lupton, beginning at intersection of Hwy 85 & Hwy 52;
 East on Hwy 52
 MP 3.7 Right on existing gravel pad access
 MP 3.9 Vawter 20-2 Pad

6/6/11



LAND SURVEYING AND MAPPING
LAFAYETTE - WINTER PARK
 Ph 303 666 0379 Fx 303 665 6320

ENPROP, INC.
VAWTER 20-2 PAD

NW1/4 SW1/4 SEC. 2 T1N R66W
6th PM WELD COUNTY COLORADO