

# QUICKSILVER RESOURCES, INC.

**KLINE #21-23**

**LOCATED IN MOFFAT COUNTY, COLORADO**

**SECTION 23, T7N, R91W, 6th P.M.**

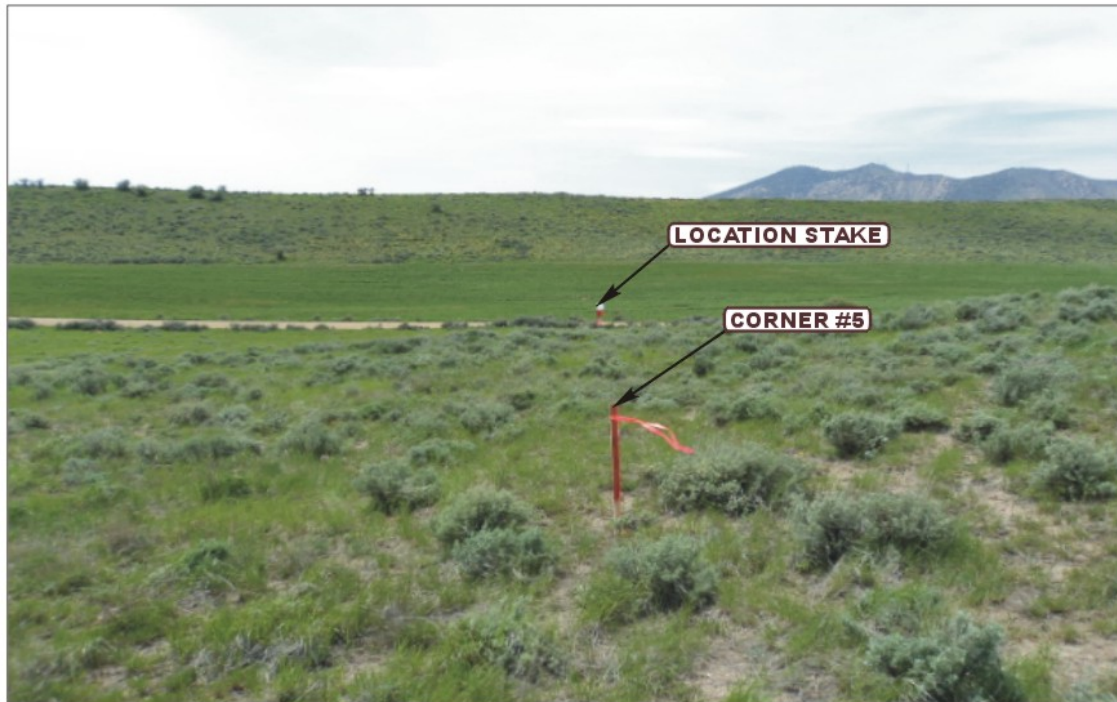


PHOTO: VIEW FROM CORNER #5 TO LOCATION STAKE

CAMERA ANGLE: NORTHWESTERLY



PHOTO: VIEW FROM BEGINNING OF PROPOSED ACCESS

CAMERA ANGLE: EASTERLY



**UELS** Uintah Engineering & Land Surveying  
85 South 200 East Vernal, Utah 84078  
(435) 789-1017 \* FAX (435) 789-1813

**LOCATION PHOTOS**

**06 16 11**  
MONTH DAY YEAR

PHOTO  
**P1**

TAKEN BY: G.M.

DRAWN BY: S.F.

REVISED: 00-00-00

# QUICKSILVER RESOURCES, INC.

**KLINE #21-23**

**LOCATED IN MOFFAT COUNTY, COLORADO**

**SECTION 23, T7N, R91W, 6th P.M.**



PHOTO: VIEW OF LOCATION STAKE

CAMERA ANGLE: NORTHERLY



PHOTO: VIEW OF LOCATION STAKE

CAMERA ANGLE: EASTERLY



**UELS**

Uintah Engineering & Land Surveying  
85 South 200 East Vernal, Utah 84078  
(435) 789-1017 \* FAX (435) 789-1813

**LOCATION PHOTOS**

**06 16 11**  
MONTH DAY YEAR

**PHOTO  
P2**

TAKEN BY: G.M.

DRAWN BY: S.F.

REVISED: 00-00-00



# QUICKSILVER RESOURCES, INC.

**KLINE #21-23**

**LOCATED IN MOFFAT COUNTY, COLORADO**

**SECTION 23, T7N, R91W, 6th P.M.**



PHOTO: VIEW OF LOCATION STAKE

CAMERA ANGLE: SOUTHERLY



PHOTO: VIEW OF LOCATION STAKE

CAMERA ANGLE: WESTERLY



Uintah Engineering & Land Surveying  
85 South 200 East Vernal, Utah 84078  
(435) 789-1017 \* FAX (435) 789-1813

**LOCATION PHOTOS**

**06 16 11**  
MONTH DAY YEAR

**PHOTO  
P3**

TAKEN BY: G.M.

DRAWN BY: S.F.

REVISED: 00-00-00