

QUICKSILVER RESOURCES, INC.

CONSTRUCTION LAYOUT FOR

KLINE #21-23

SECTION 23, T7N, R91W, 6th. P.M.

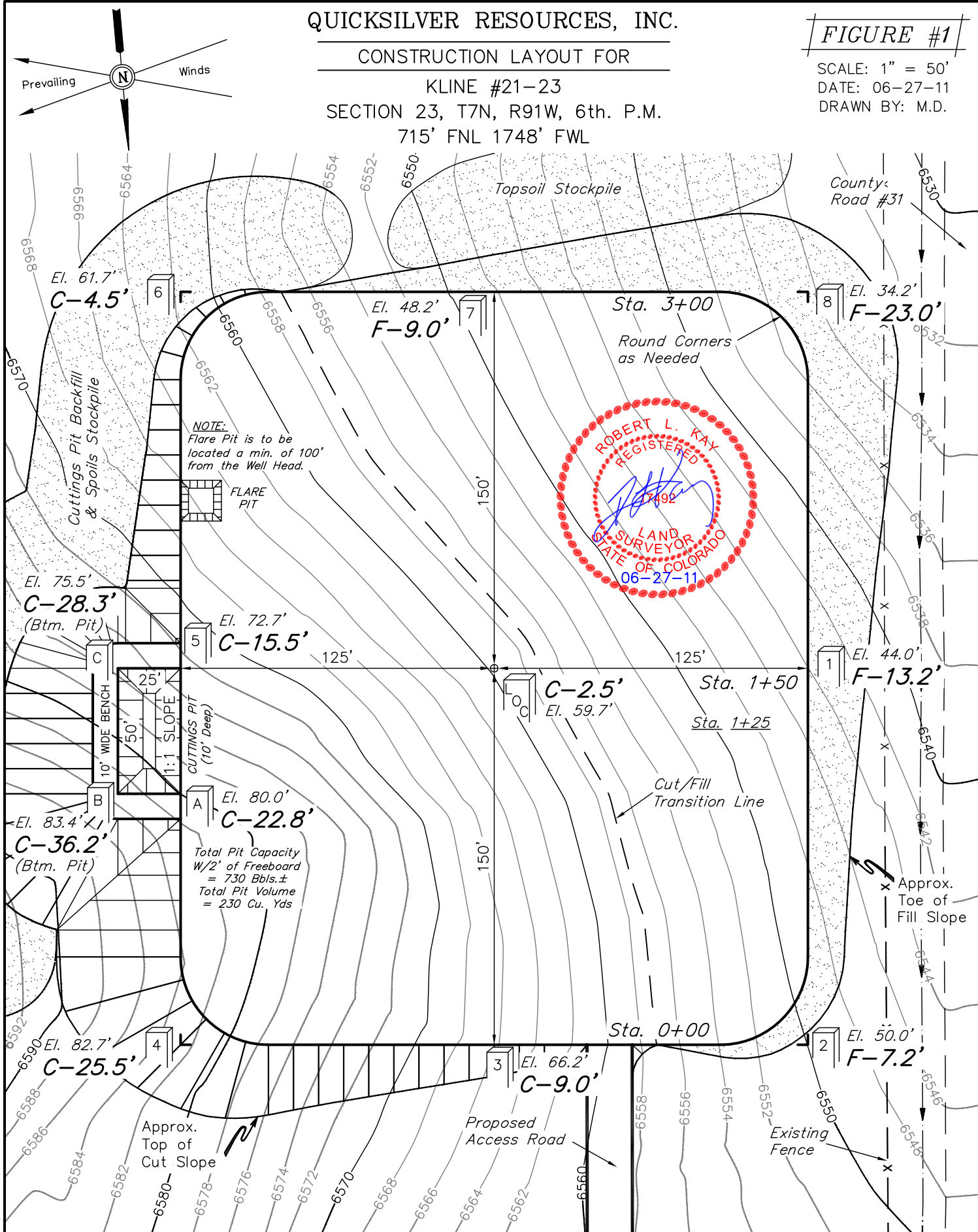
715' FNL 1748' FWL

FIGURE #1

SCALE: 1" = 50'

DATE: 06-27-11

DRAWN BY: M.D.



Elev. Ungraded Ground At Loc. Stake = 6559.7'
FINISHED GRADE ELEV. AT LOC. STAKE = 6557.2'

UINTAH ENGINEERING & LAND SURVEYING
85 So. 200 East * Vernal, Utah 84078 * (435) 789-1017

QUICKSILVER RESOURCES, INC.

CONSTRUCTION LAYOUT CROSS SECTIONS FOR

KLINE #21-23

SECTION 23, T7N, R91W, 6th. P.M.

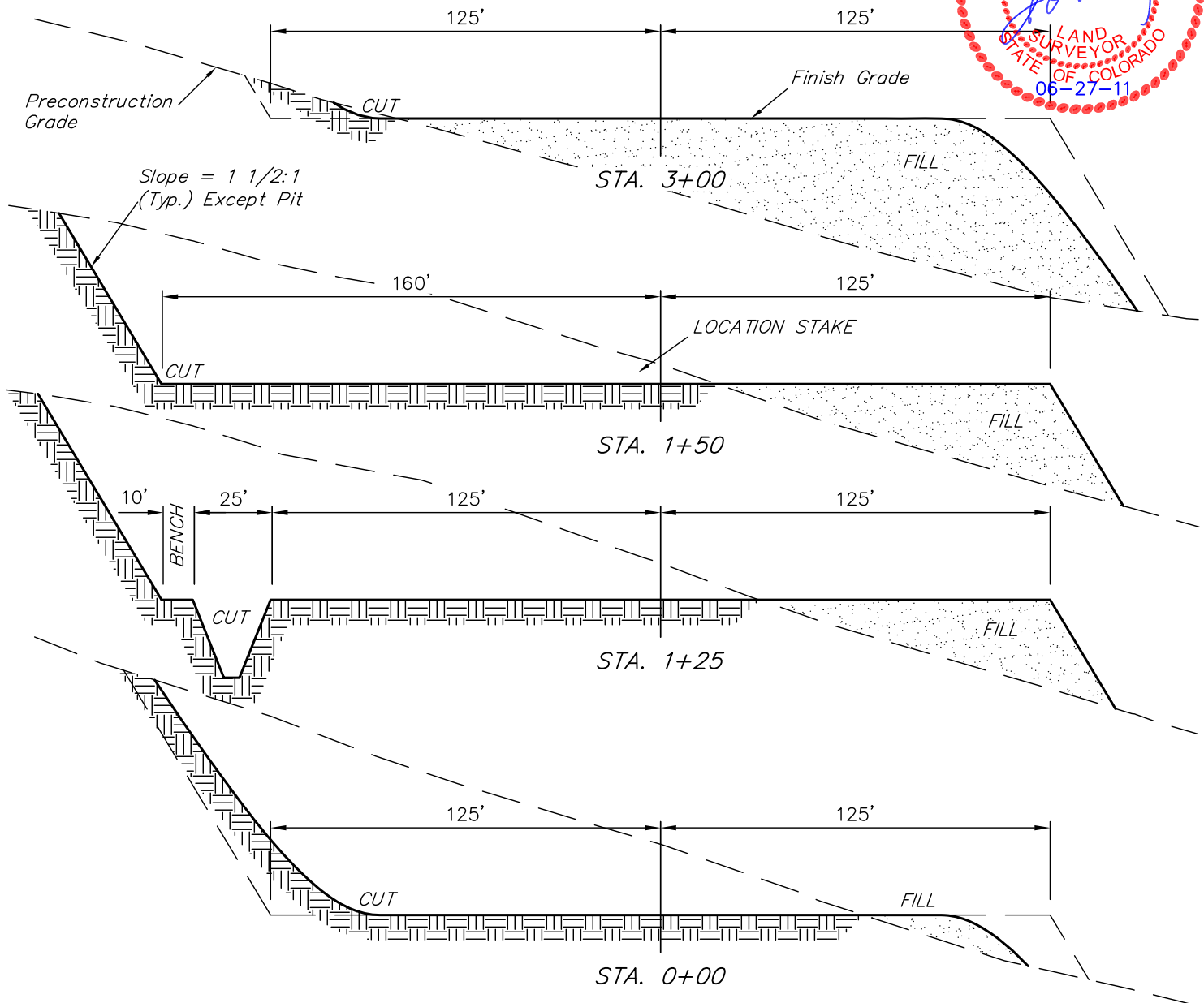
715' FNL 1748' FWL

FIGURE #2

X-Section
Scale
1" = 50'

DATE: 06-27-11

DRAWN BY: M.D.



NOTE:

Topsoil should not be Stripped Below Finished Grade on Substructure Area.

APPROXIMATE ACREAGES

WELL SITE DISTURBANCE = ± 2.953 ACRES
ACCESS ROAD DISTURBANCE = ± 0.279 ACRES
TOTAL = ± 3.232 ACRES

* NOTE:

FILL QUANTITY INCLUDES 5% FOR COMPACTION

APPROXIMATE YARDAGES

(6") Topsoil Stripping = 2,020 Cu. Yds.
Remaining Location = 21,590 Cu. Yds.
TOTAL CUT = 23,610 CU.YDS.
FILL = 15,340 CU.YDS.

EXCESS MATERIAL = 8,270 Cu. Yds.
Topsoil & Pit Backfill (1/2 Pit Vol.) = 2,140 Cu. Yds.
EXCESS UNBALANCE (After Interim Rehabilitation) = 6,130 Cu. Yds.

UINTAH ENGINEERING & LAND SURVEYING

85 So. 200 East * Vernal, Utah 84078 * (435) 789-1017

QUICKSILVER RESOURCES, INC.

TYPICAL RIG LAYOUT FOR

KLINE #21-23

SECTION 23, T7N, R91W, 6th. P.M.

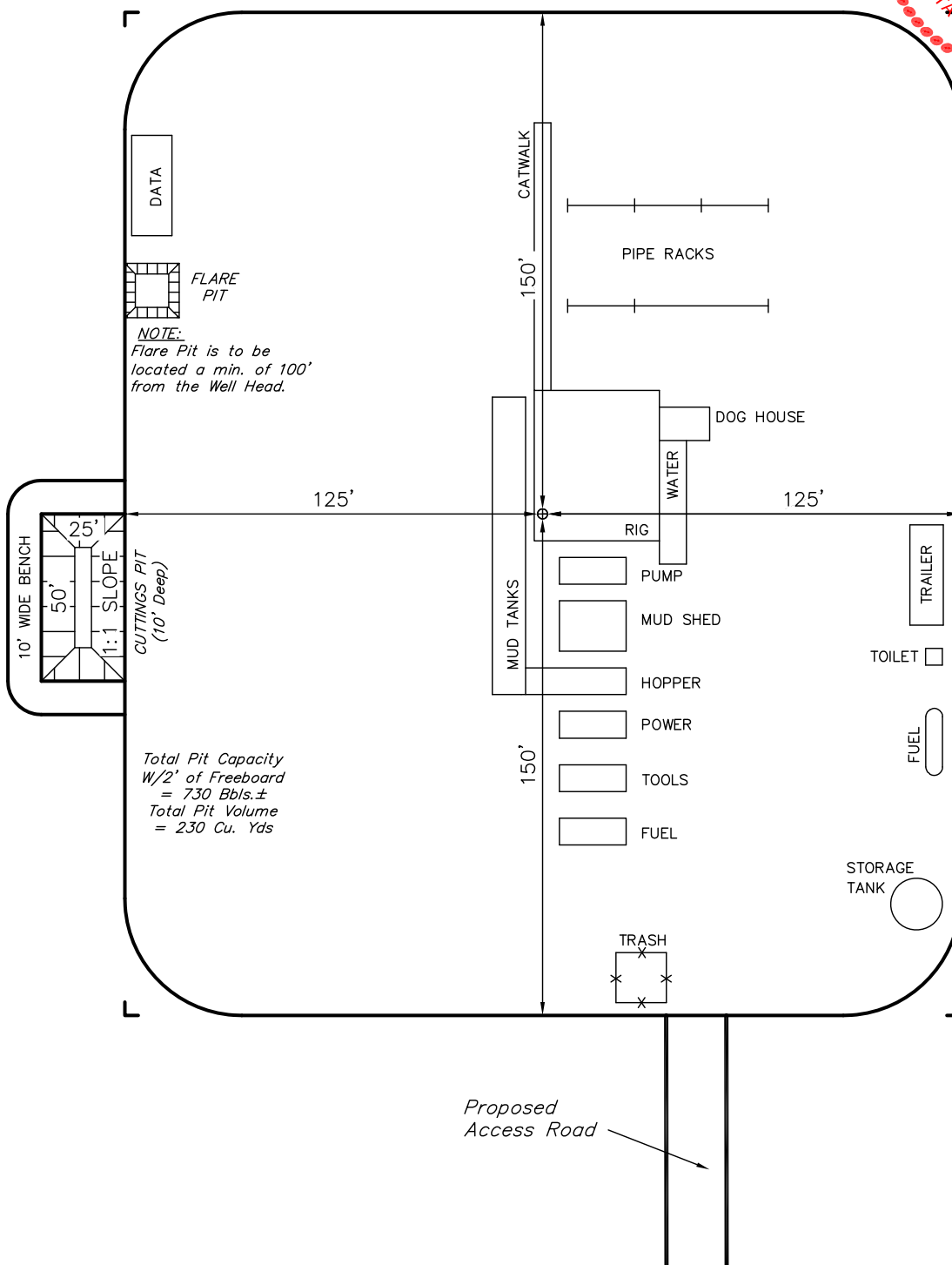
715' FNL 1748' FWL

FIGURE #3

SCALE: 1" = 50'

DATE: 06-27-11

DRAWN BY: M.D.



Proposed
Access Road

UINTAH ENGINEERING & LAND SURVEYING

85 So. 200 East * Vernal, Utah 84078 * (435) 789-1017



QUICKSILVER RESOURCES, INC.

RECLAMATION DIAGRAM FOR

KLINE #21-23

SECTION 23, T7N, R91W, 6th. P.M.

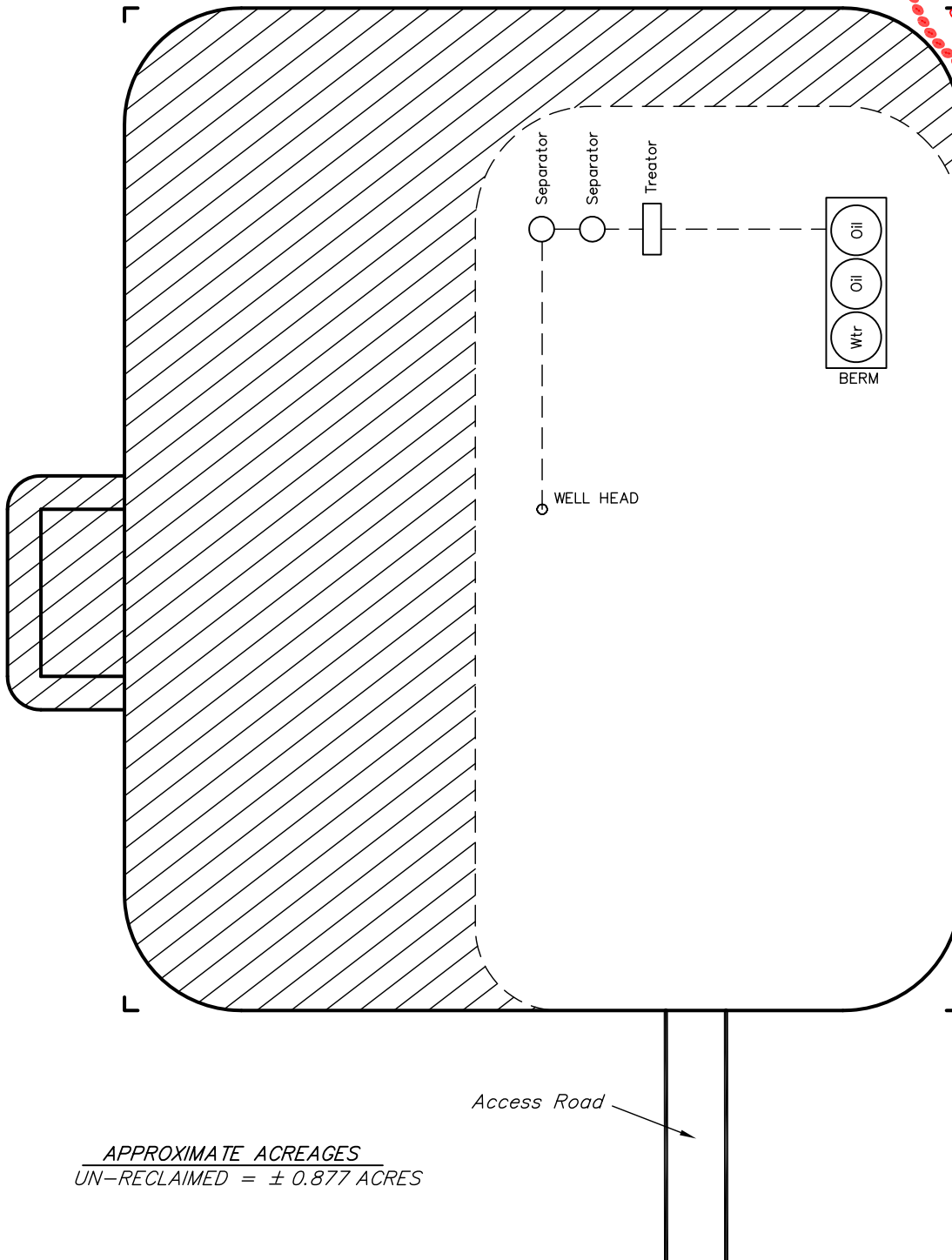
715' FNL 1748' FWL

FIGURE #4

SCALE: 1" = 50'

DATE: 06-27-11

DRAWN BY: M.D.



APPROXIMATE ACREAGES
UN-RECLAIMED = ± 0.877 ACRES



RECLAIMED AREA

UINTAH ENGINEERING & LAND SURVEYING

85 So. 200 East * Vernal, Utah 84078 * (435) 789-1017