

LEGEND:

PROPOSED LOCATION

QUICKSILVER RESOURCES, INC.

KLINE #21-23

SECTION 23, T7N, R91W, 6th P.M.

715' FNL 1748' FWL



Uintah Engineering & Land Surveying
 85 South 200 East Vernal, Utah 84078
 (435) 789-1017 * FAX (435) 789-1813

ACCESS ROAD
 MAP

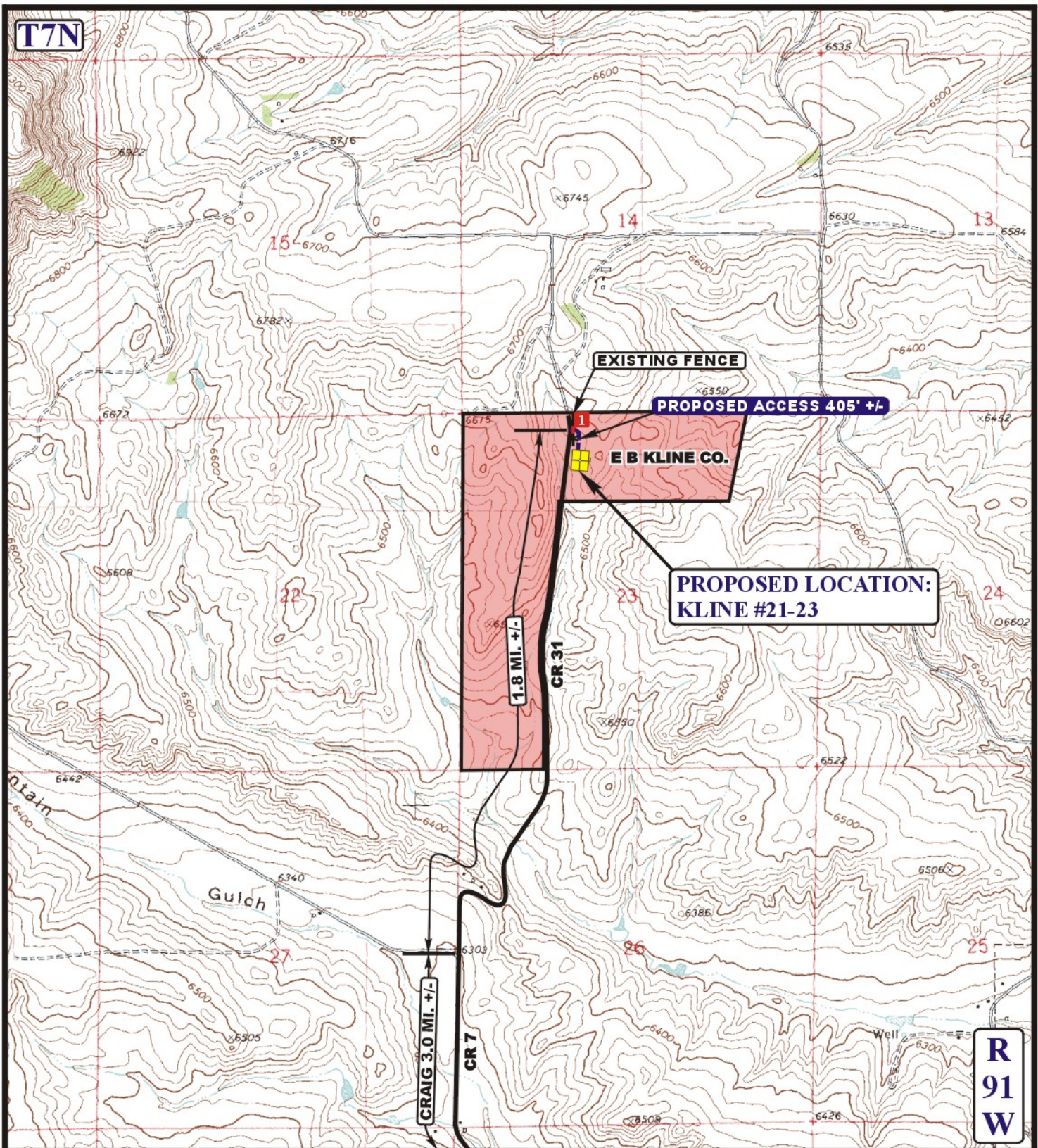
06 16 11
 MONTH DAY YEAR

SCALE: 1:100,000

DRAWN BY: S.F.

REVISED: 00-00-00

A
 TOPO



LEGEND:

- EXISTING ROAD
- PROPOSED ACCESS ROAD
- EXISTING FENCE
- INSTALL CATTLE GUARD

QUICKSILVER RESOURCES, INC.

KLINE #21-23
SECTION 23, T7N, R91W, 6th P.M.
715' FNL 1748' FWL



Utah Engineering & Land Surveying
85 South 200 East Vernal, Utah 84078
(435) 789-1017 * FAX (435) 789-1813

ACCESS ROAD
M A P

06 16 11
MONTH DAY YEAR

SCALE: 1" = 2000' **DRAWN BY: S.F.** **REVISED: 00-00-00**

B
TOPO