



Cement Bond Log

Company		XTO Energy Inc.	
Well		Apache Canyon 30-12	
Field		Purgatorie River	
County		Las Animas	
State		Colorado	
Location:		API #: 05-071-09879-00	
SEC 30 TWP 34S RGE 67W		1746' FSL & 0164' FWL	
Permanent Datum		GL	
Log Measured From		G.L.	
Drilling Measured From		G.L.	
Date		8-11-11	
Run Number		one	
Depth Driller		2566'	
Depth Logger		2292'	
Bottom Logged Interval		2290'	
Top Log Interval		Surface	
Open Hole Size		7 7/8	
Type Fluid		water	
Density / Viscosity		///	
Max. Recorded Temp.		///	
Estimated Cement Top		106'	
Time Well Ready		Portable Mast	
Time Logger on Bottom		11:45 A.M.	
Equipment Number		T590	
Location		Trinidad	
Recorded By		T. Patterson	
Witnessed By		E. Haught	
Run Number		Borehole Record	
Bit		From	
		To	
		Size	
		Weight	
		From	
		To	
Casing Record		Tubing Record	
Surface String		Size	
Prot. String		Wgt/Ft	
Production String		Top	
Liner		Bottom	
		465'	
		TD	

<<< Fold Here >>>

All interpretations are opinions based on inferences from electrical or other measurements and we cannot and do not guarantee the accuracy or correctness of any interpretation, and we shall not, except in the case of gross or willful negligence on our part, be liable or responsible for any loss, costs, damages, or expenses incurred or sustained by anyone resulting from any interpretation made by any of our officers, agents or employees. These interpretations are also subject to our general terms and conditions set out in our current Price Schedule.

Comments

Main Pass ran under 1000 PSI.



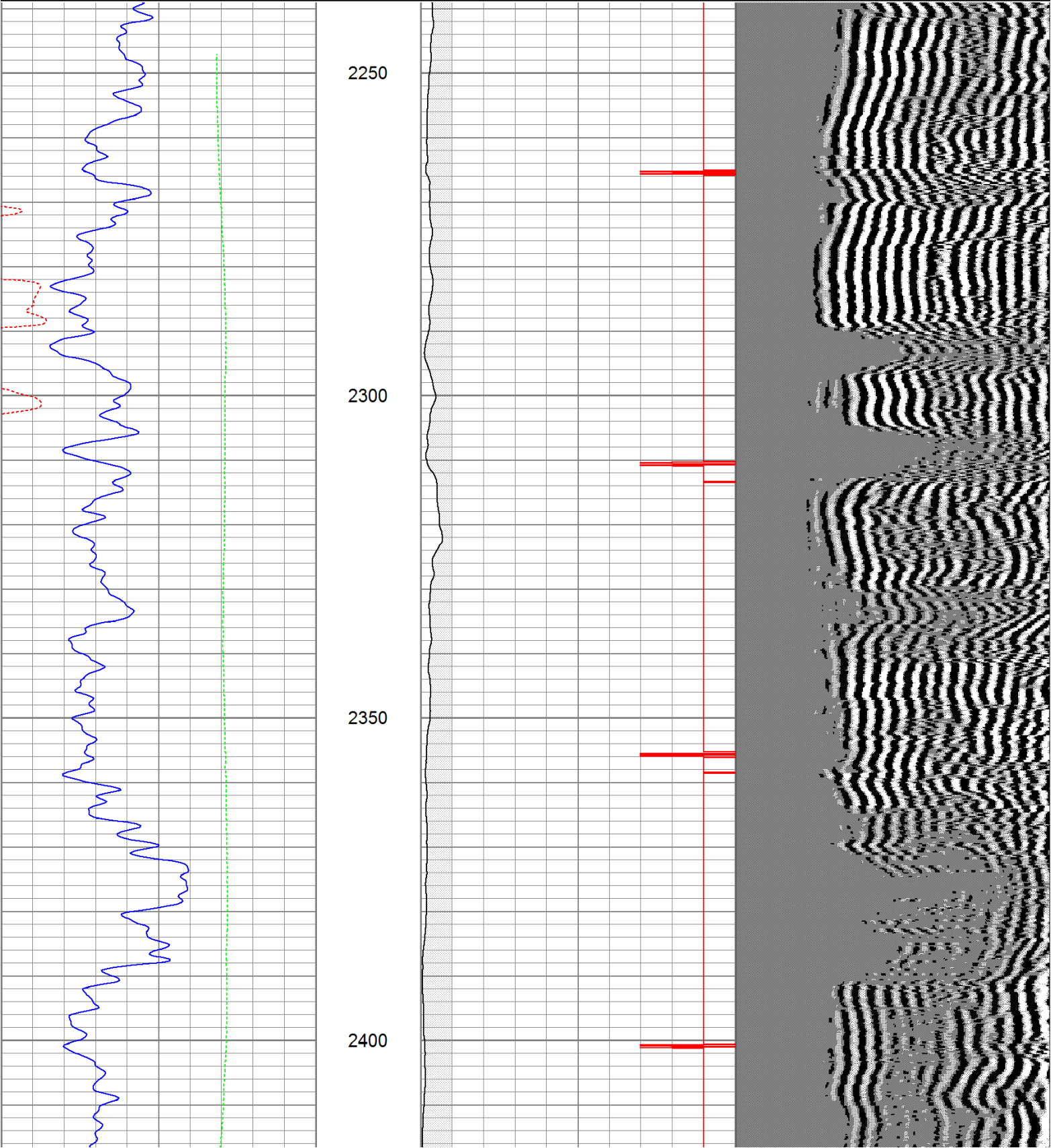
Repeat pass

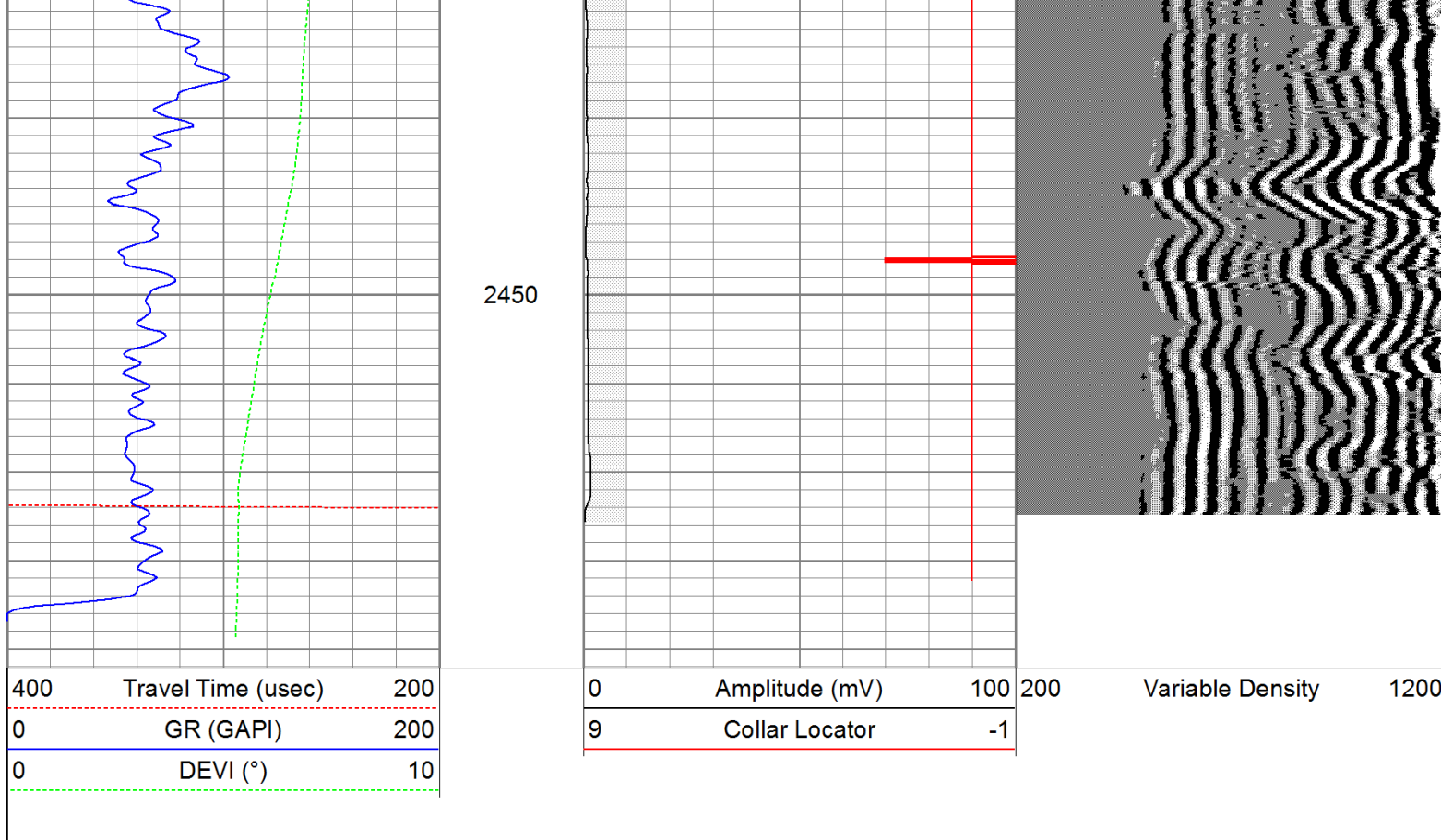
Database File: ac30-1281111b.db
Dataset Pathname: pass3
Presentation Format: cbldig
Dataset Creation: Thu Aug 11 12:16:47 2011 by Log Open-Cased 110302
Charted by: Depth in Feet scaled 1:240

400	Travel Time (usec)	200
0	GR (GAPI)	200
0	DEVI (°)	10

0	Amplitude (mV)	100
9	Collar Locator	-1

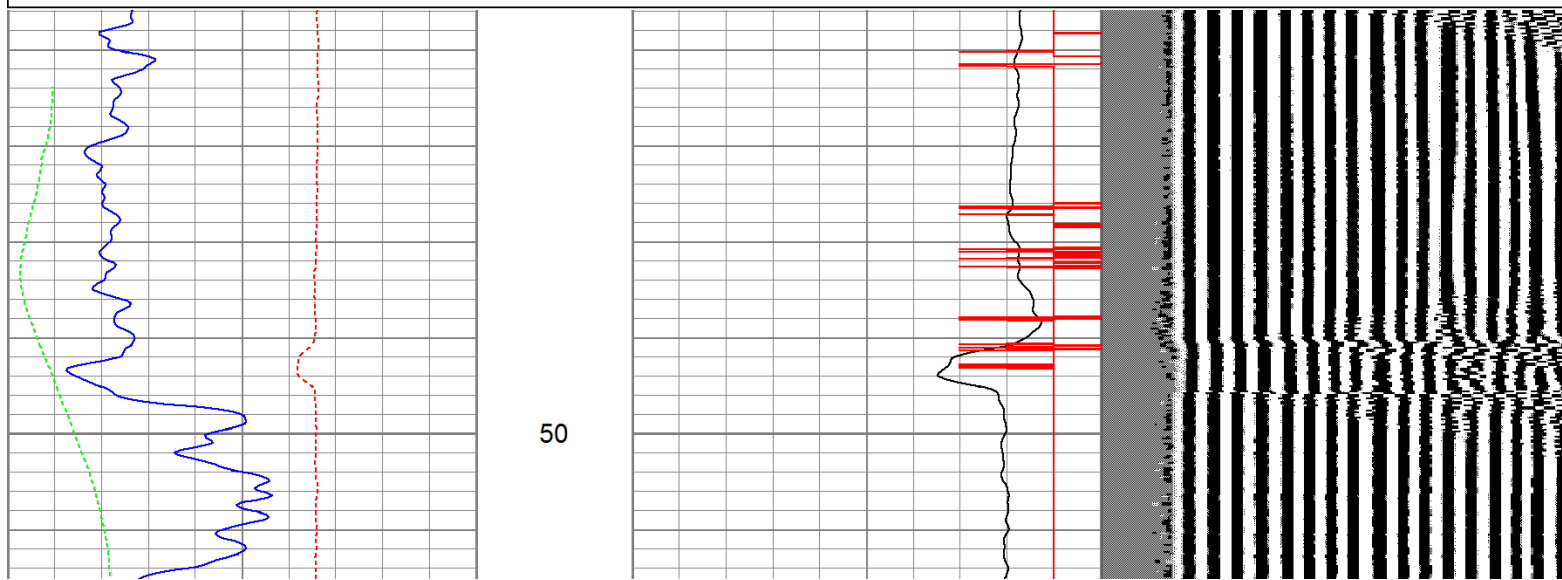
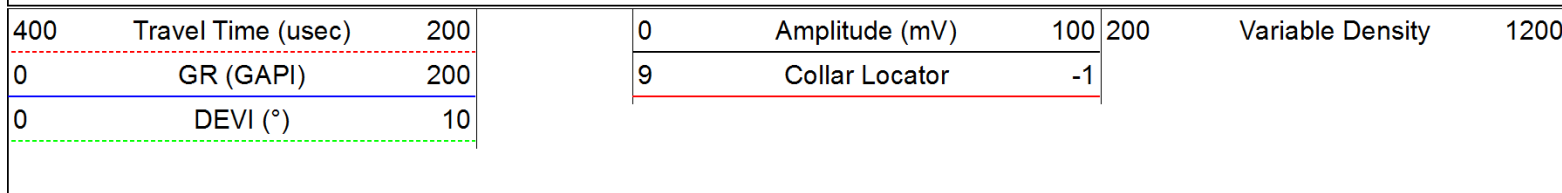
200 Variable Density 1200

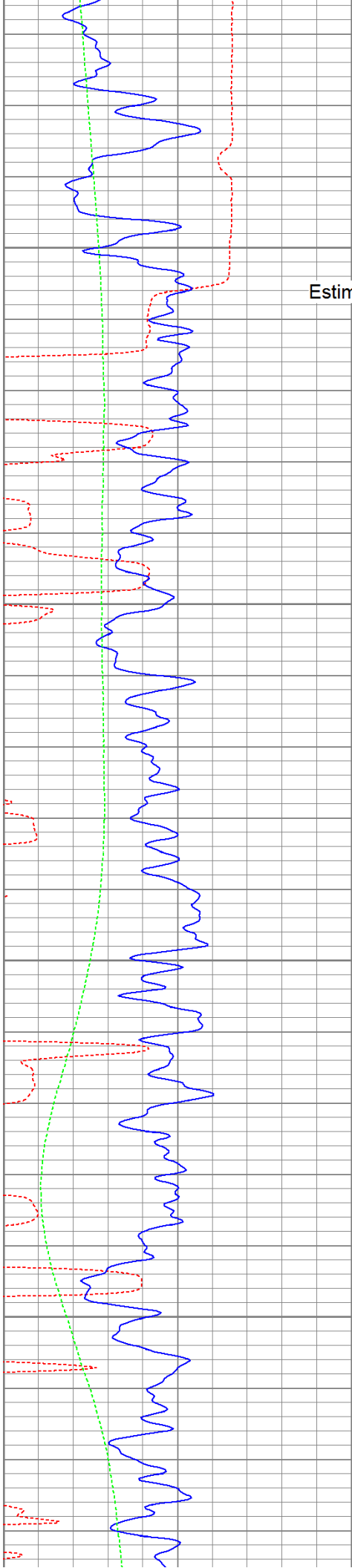




Main Pass

Database File: ac30-1281111b.db
 Dataset Pathname: pass4
 Presentation Format: cbldig
 Dataset Creation: Thu Aug 11 12:26:43 2011 by Log Open-Cased 110302
 Charted by: Depth in Feet scaled 1:240



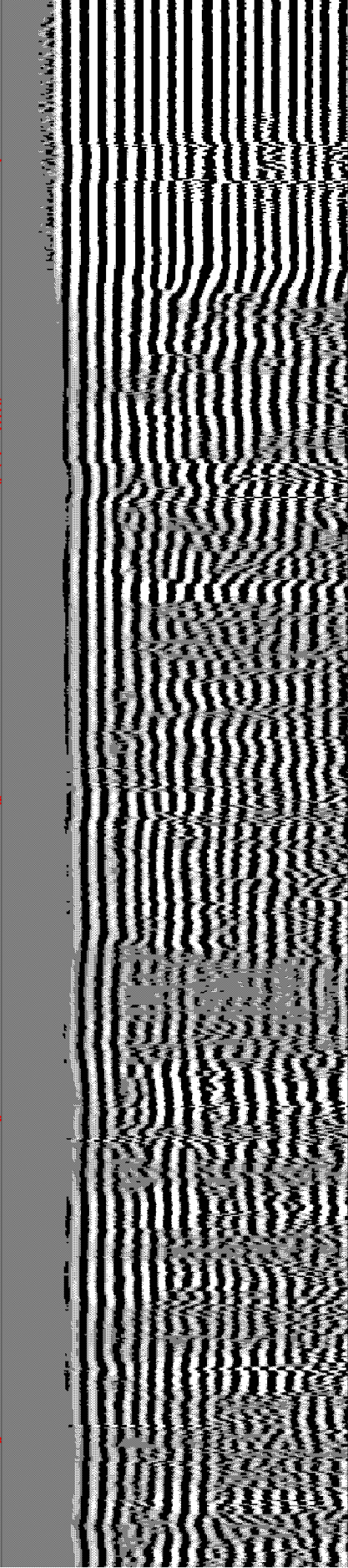
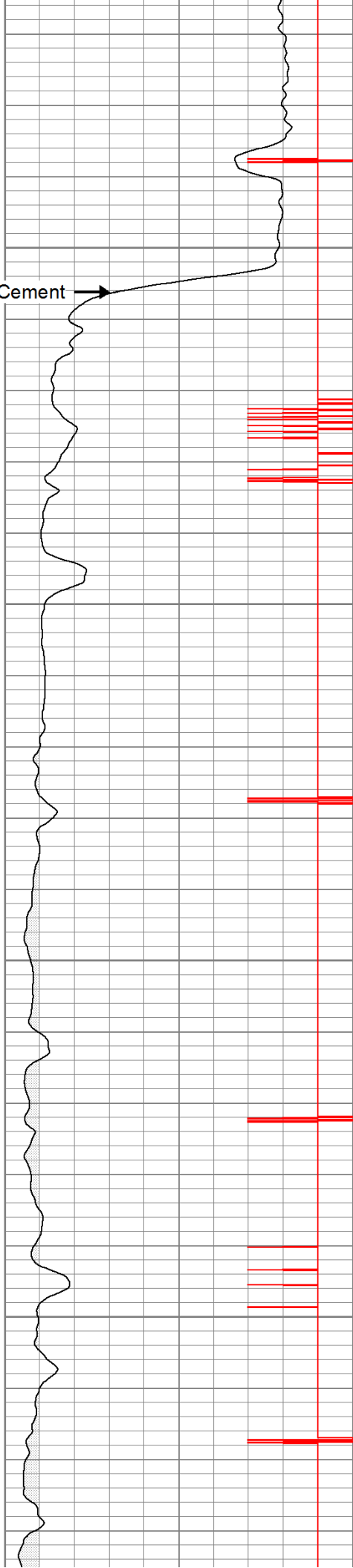


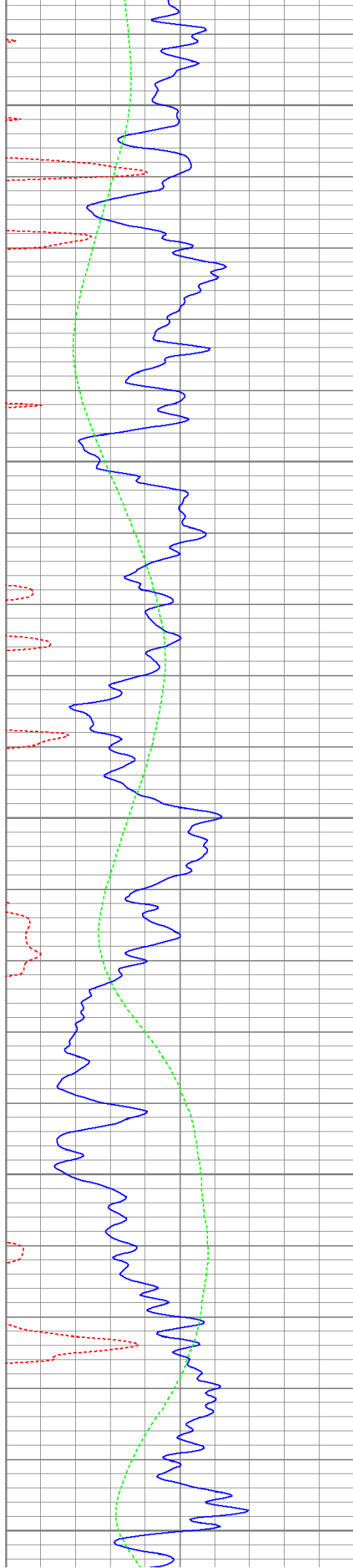
100
Estimated Top of Cement →

150

200

250





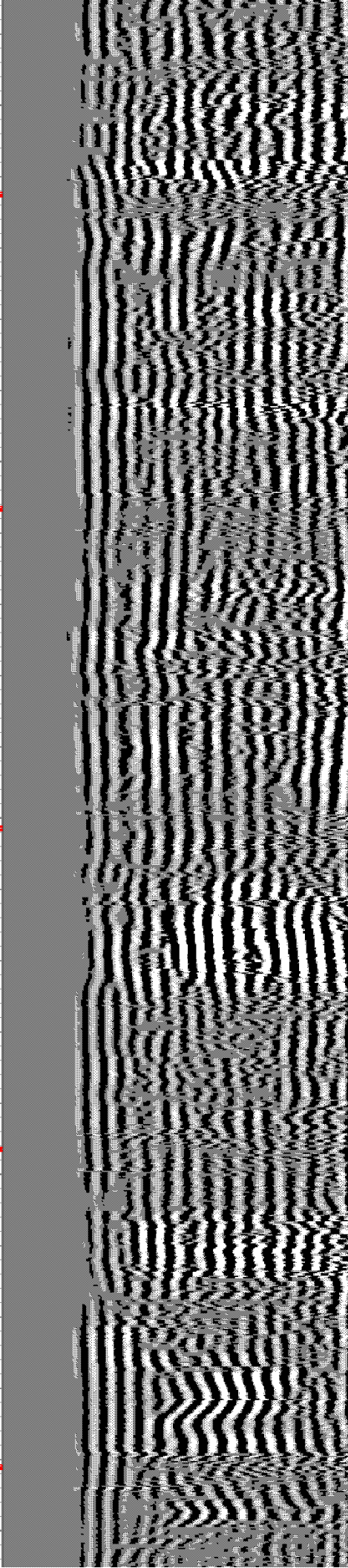
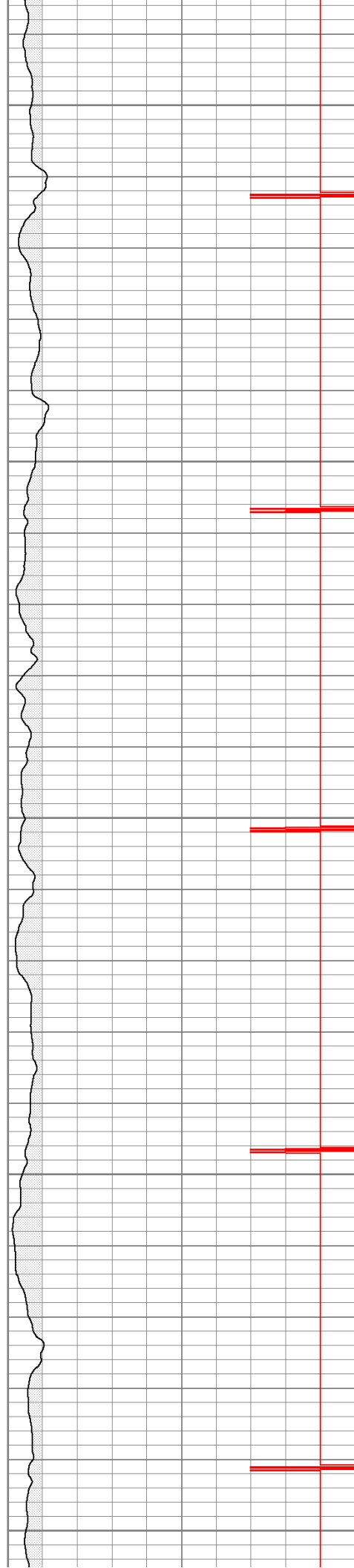
300

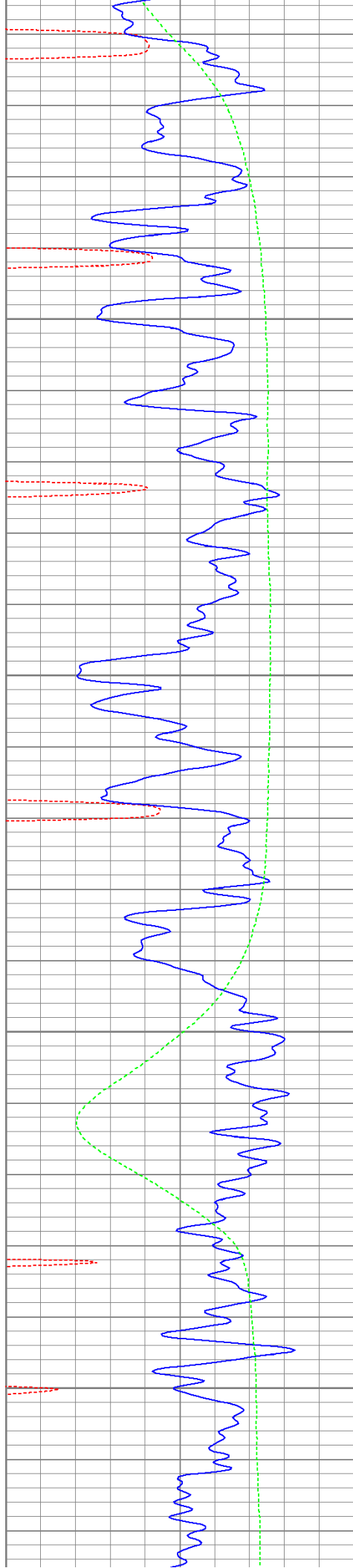
350

400

450

500



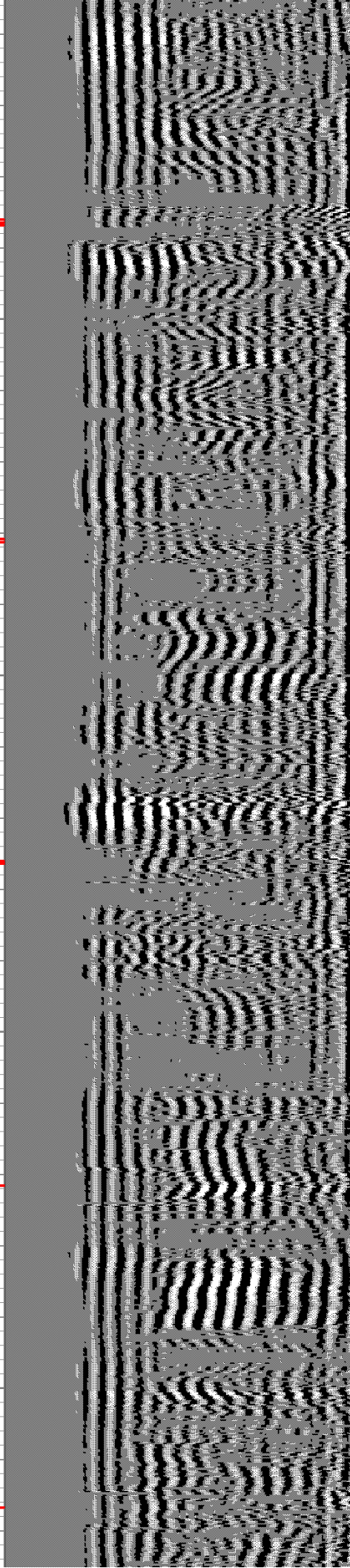
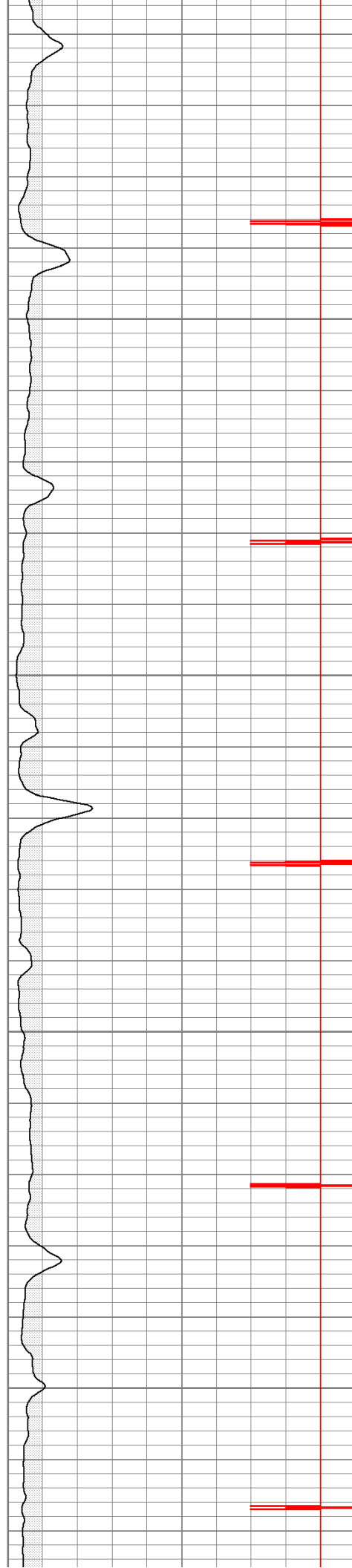


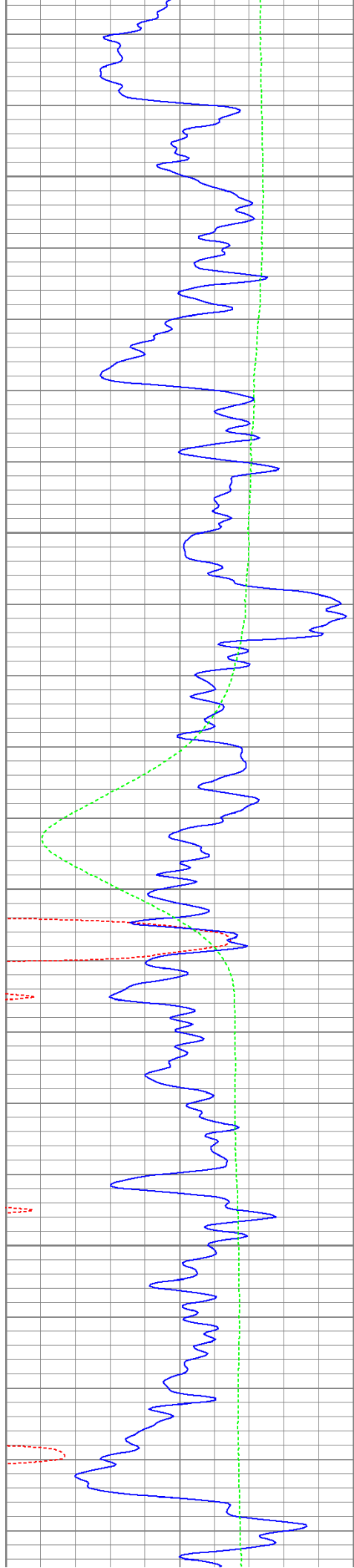
550

600

650

700



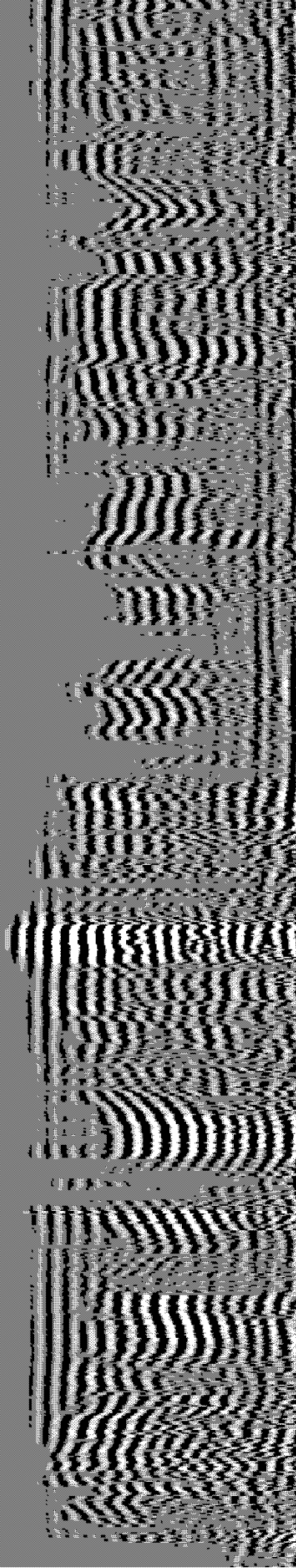
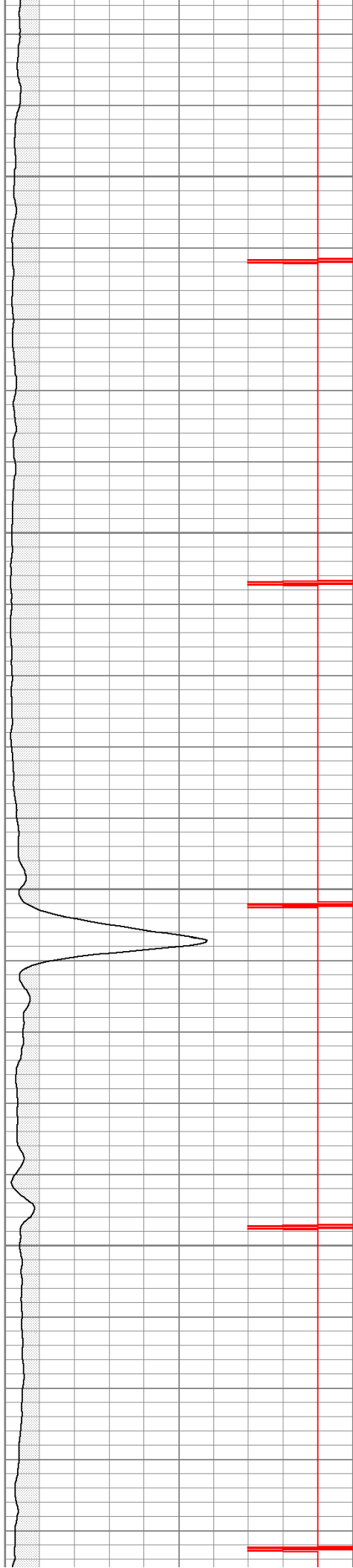


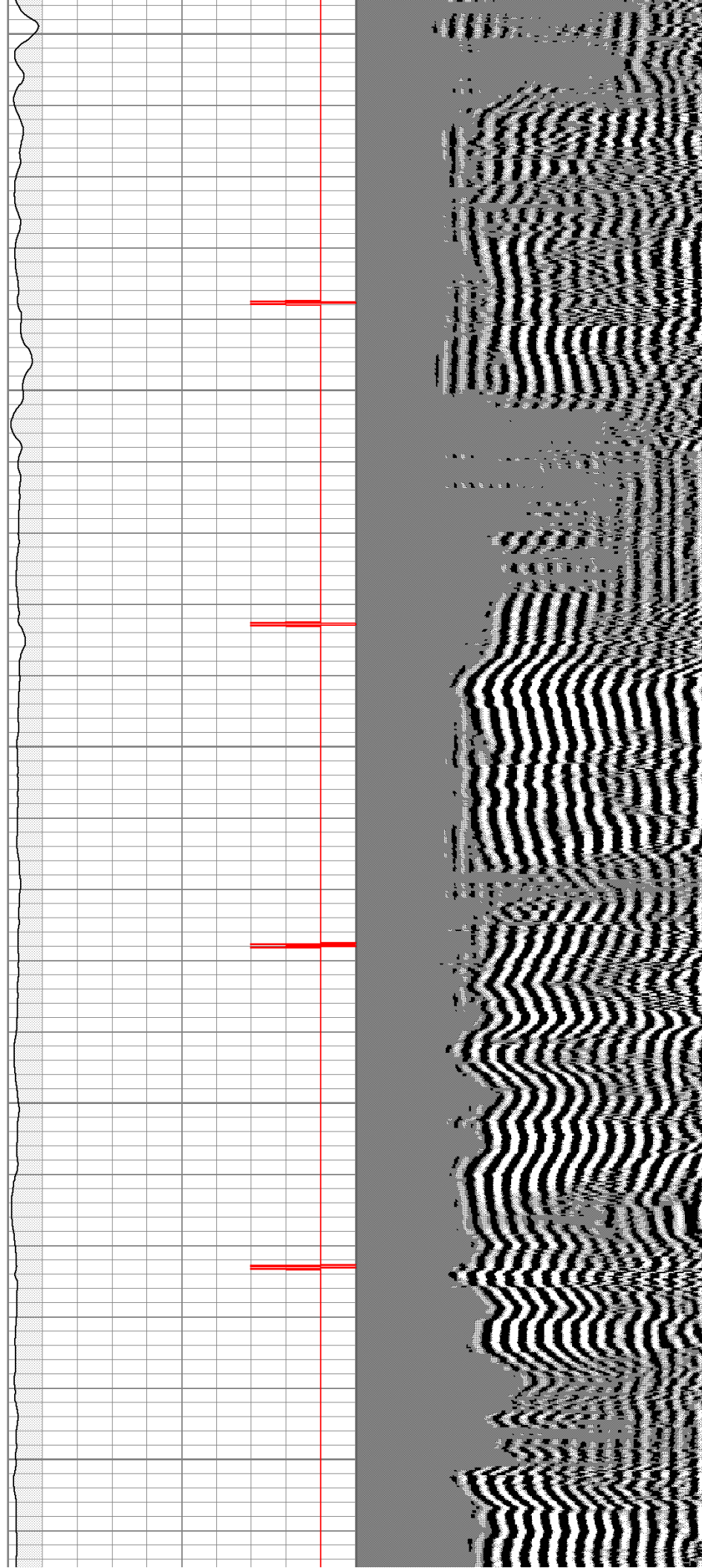
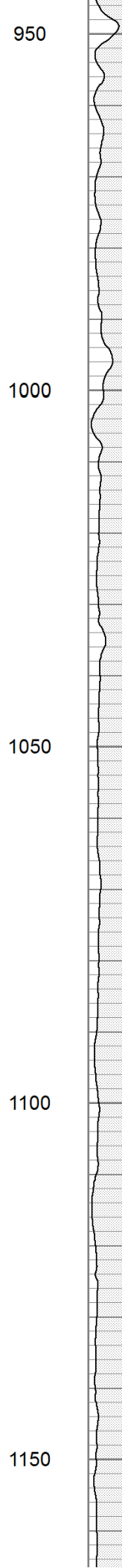
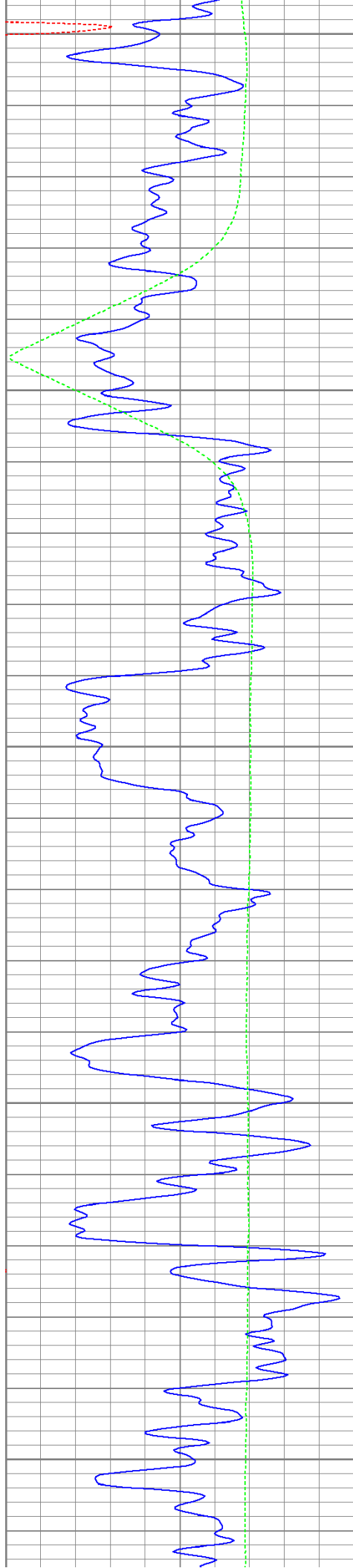
750

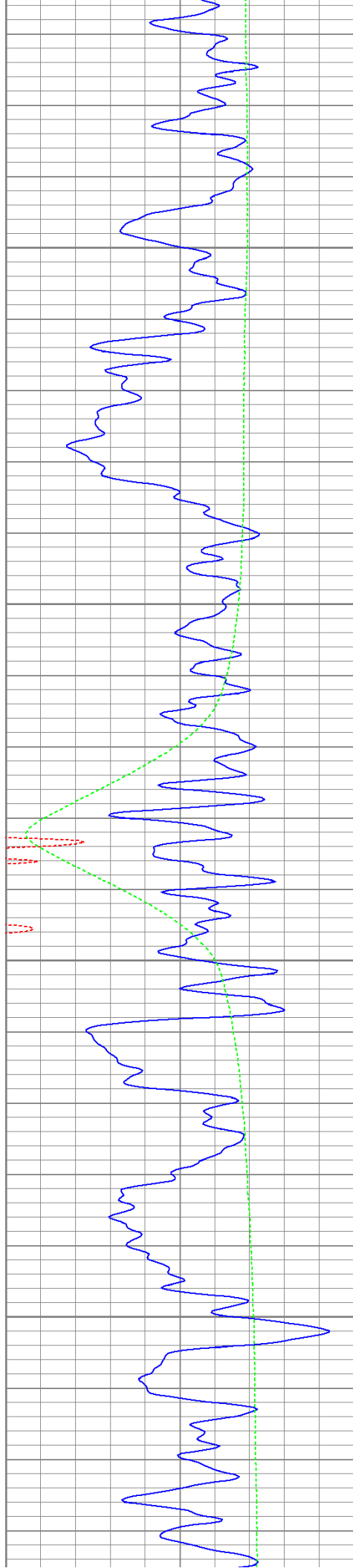
800

850

900





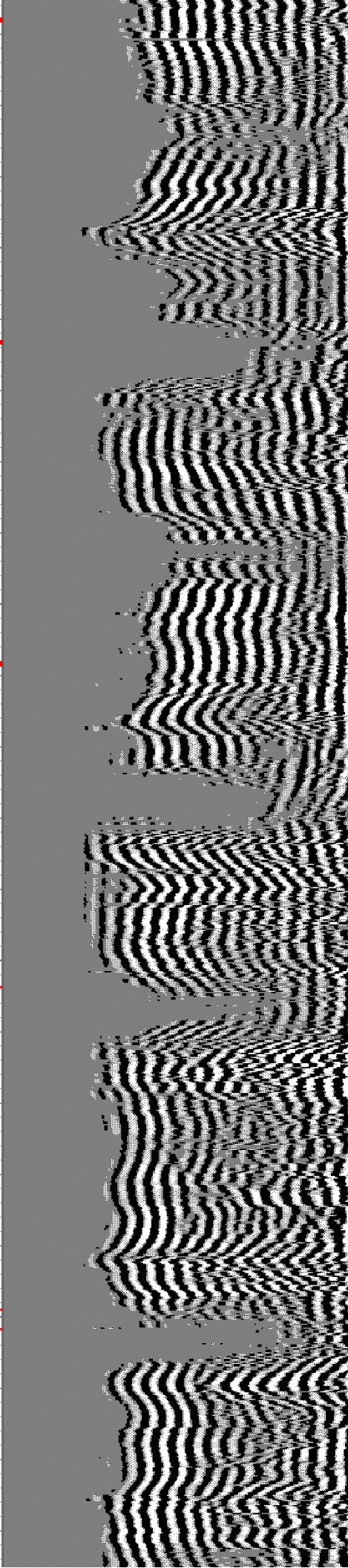
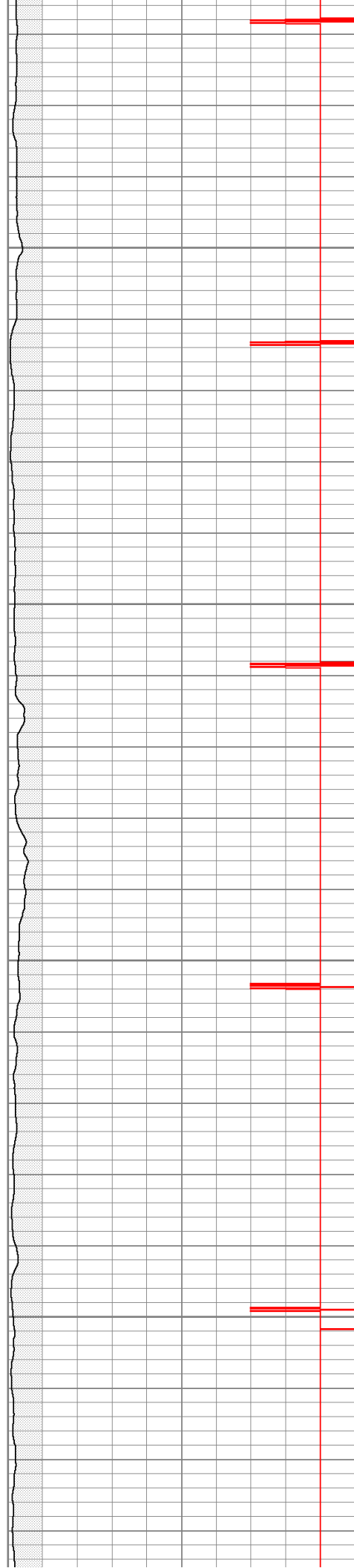


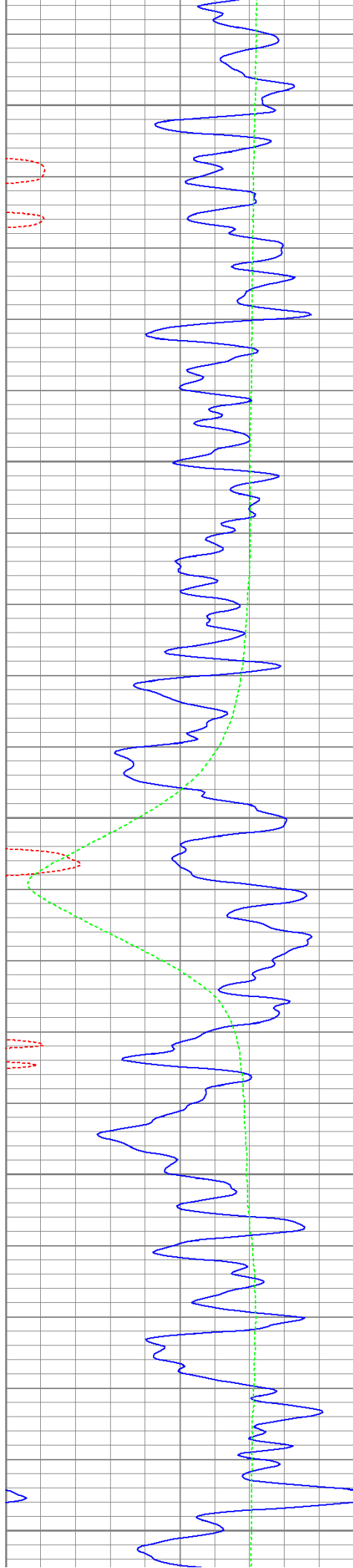
1200

1250

1300

1350





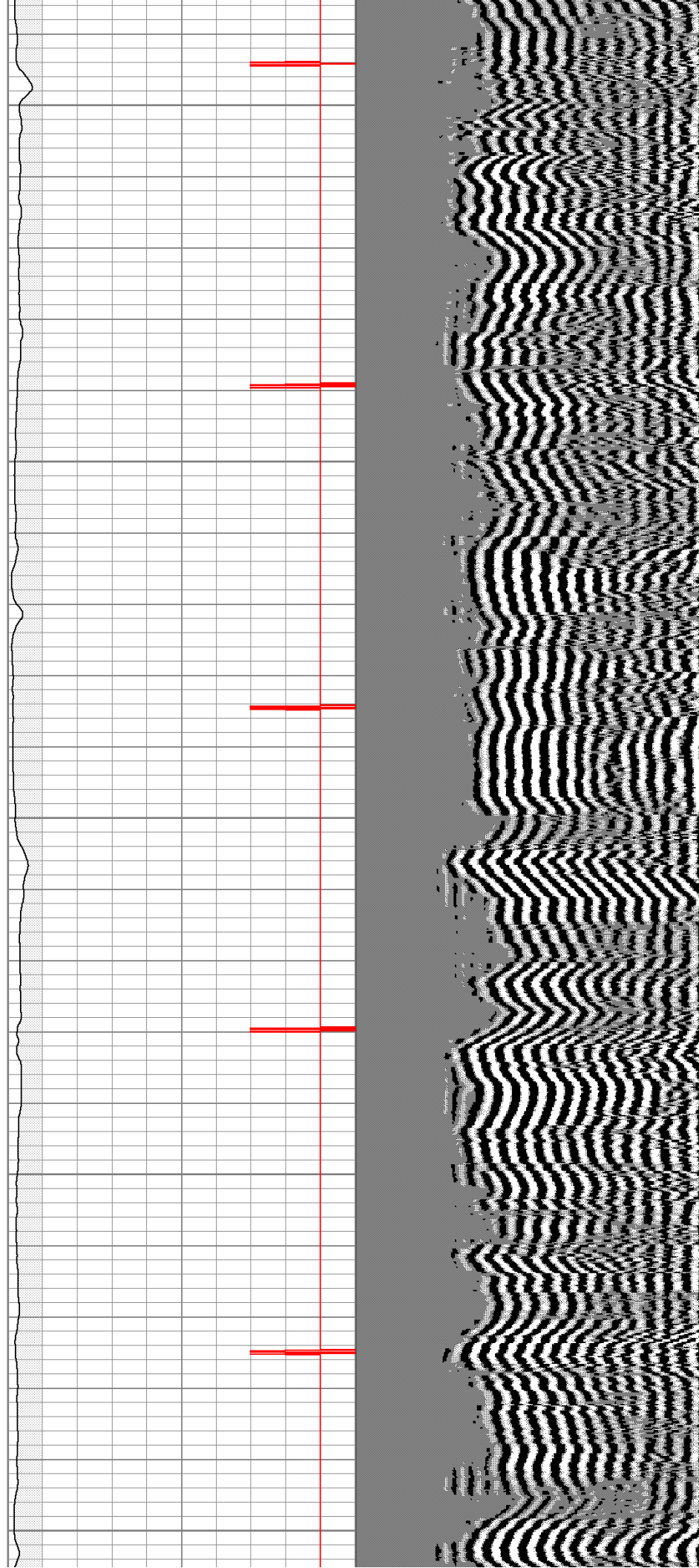
1400

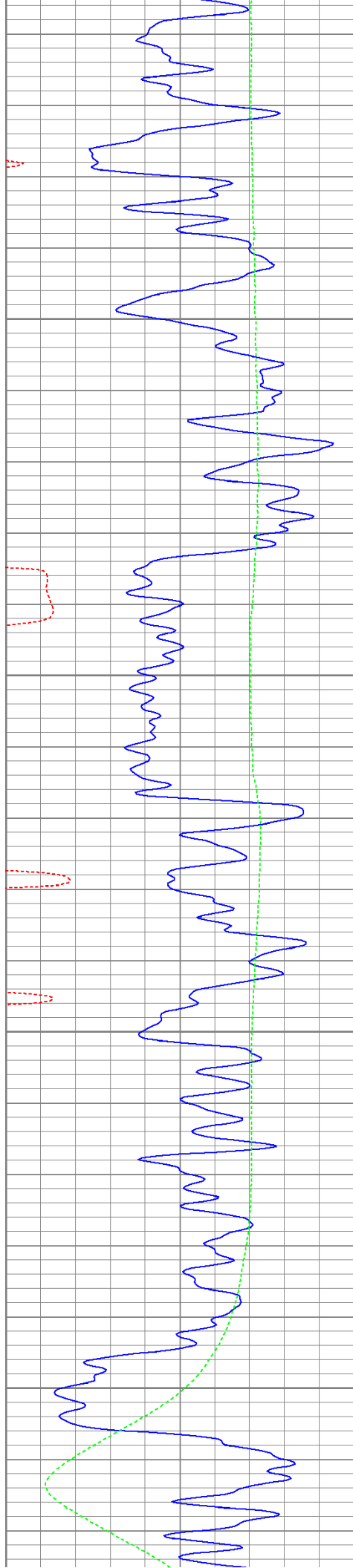
1450

1500

1550

1600



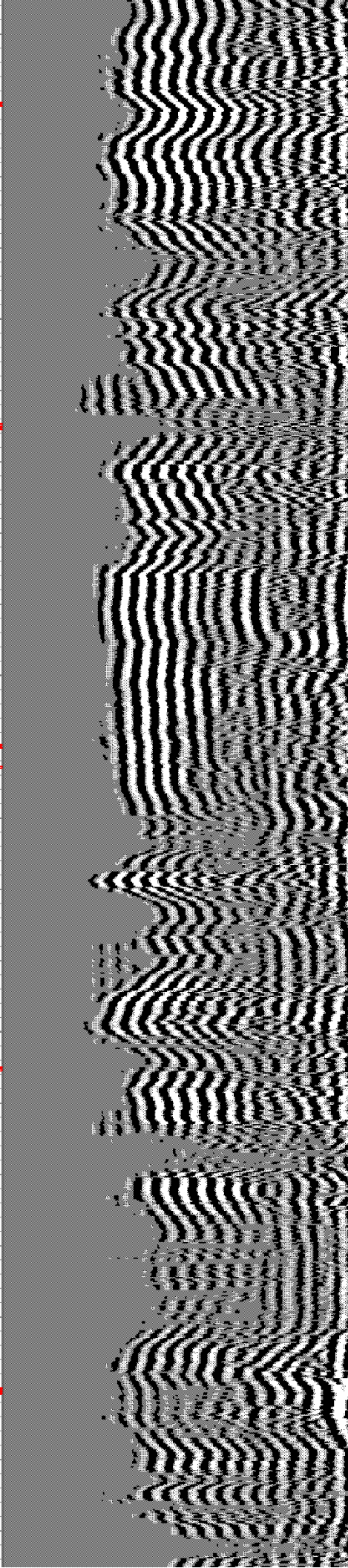


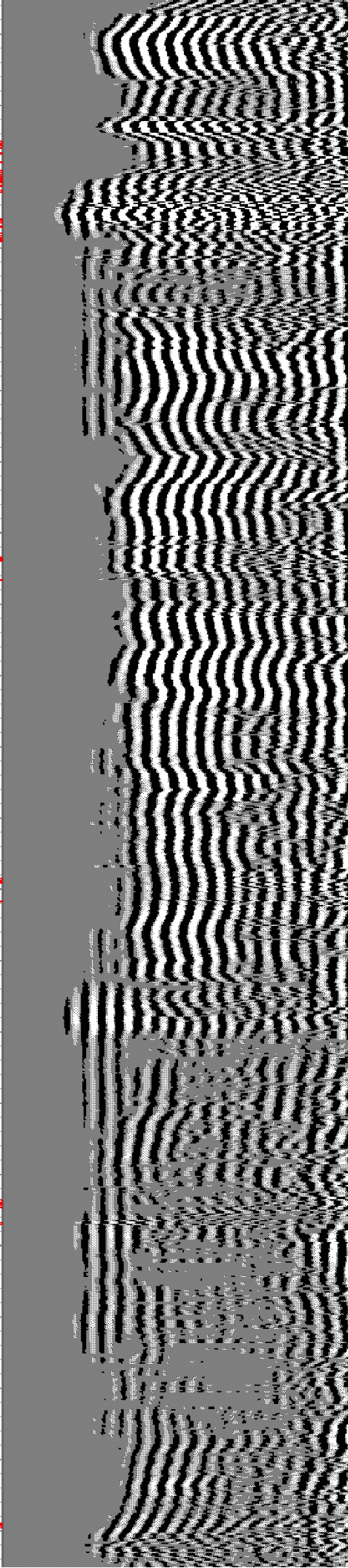
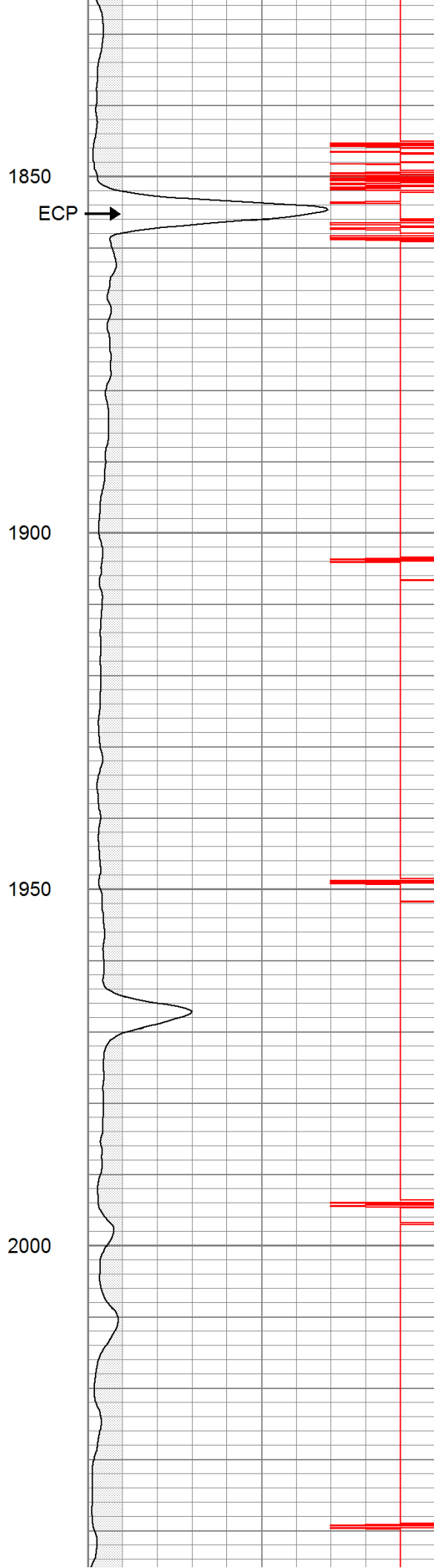
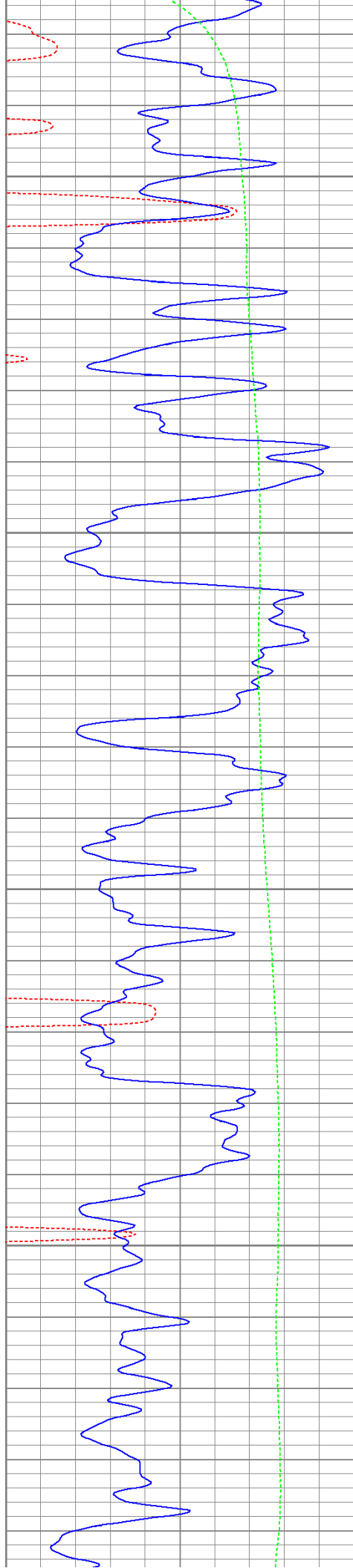
1650

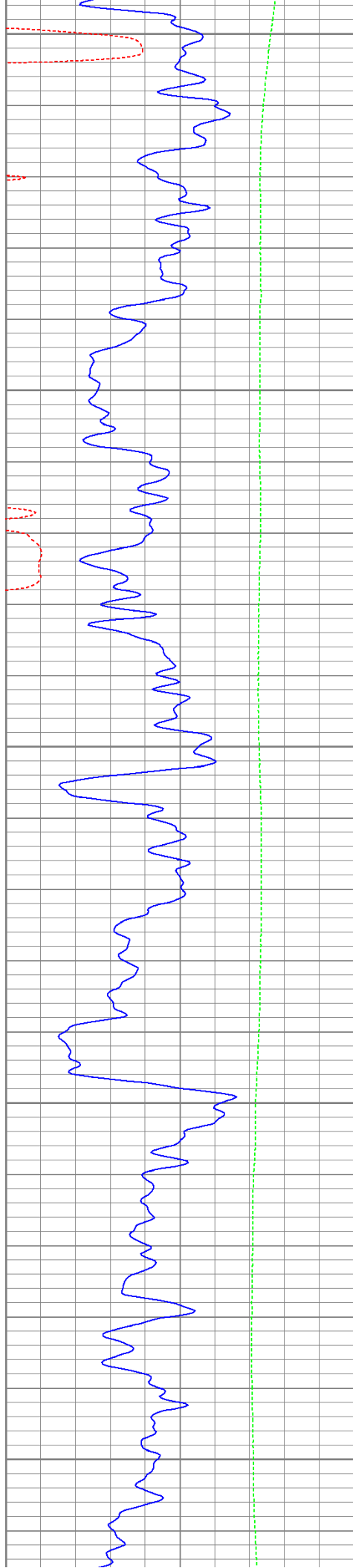
1700

1750

1800







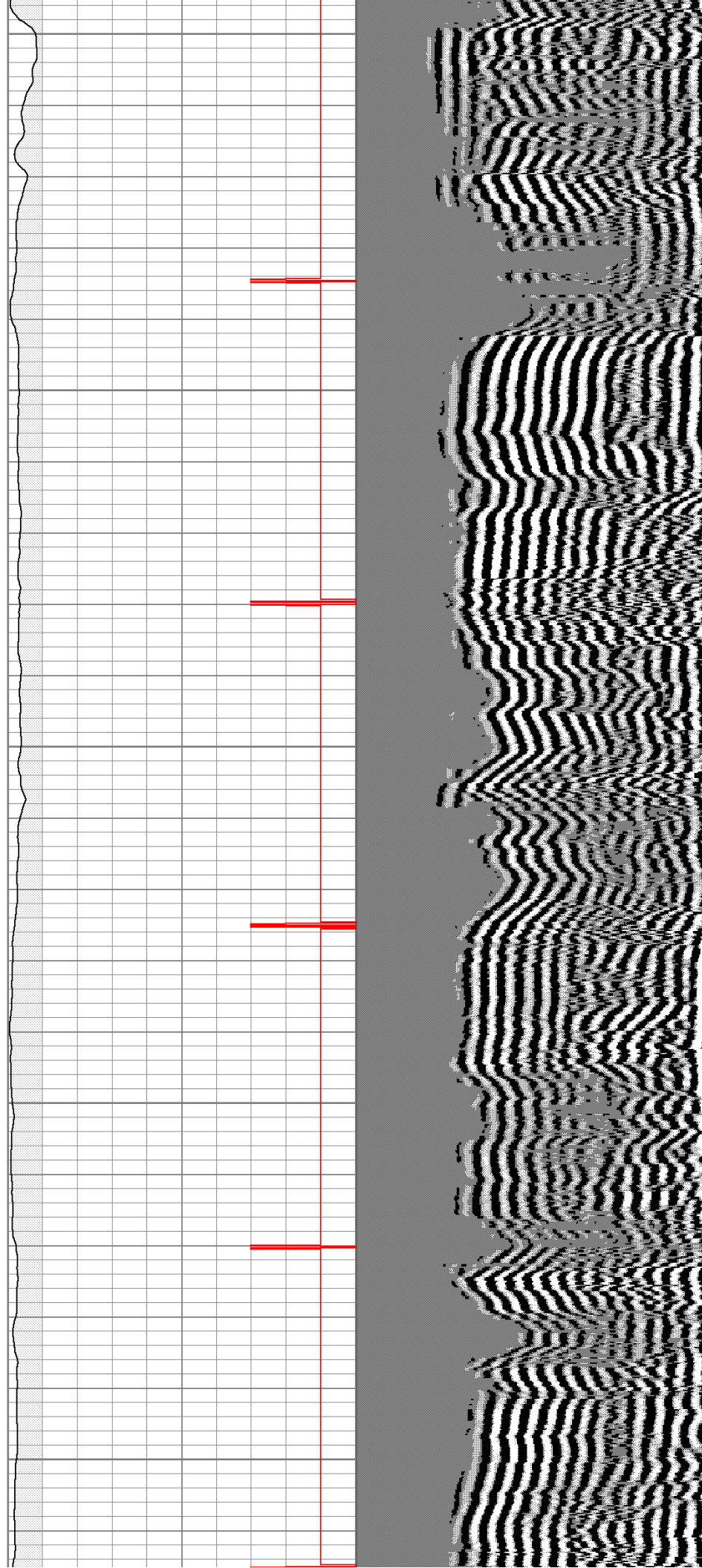
2050

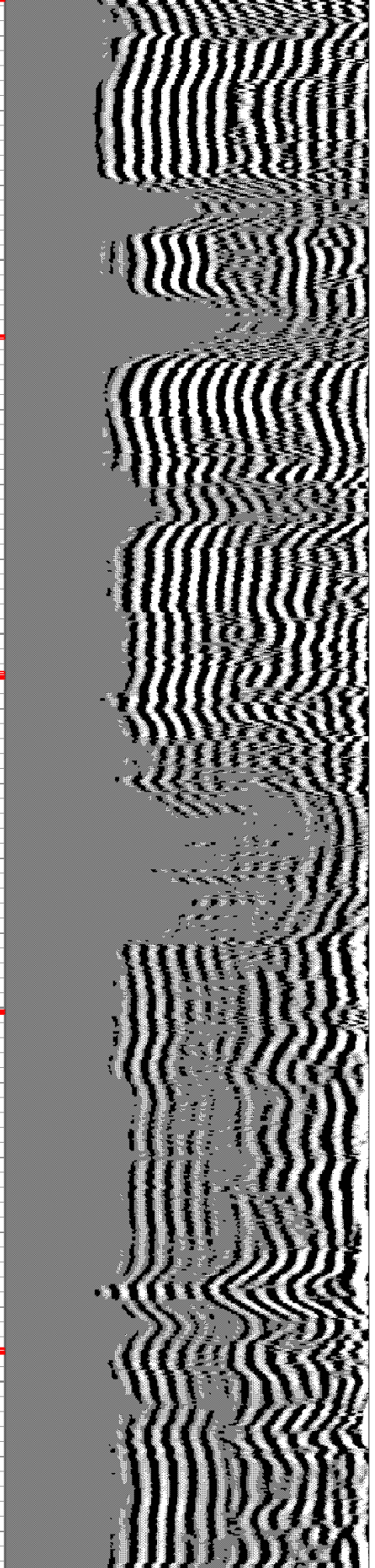
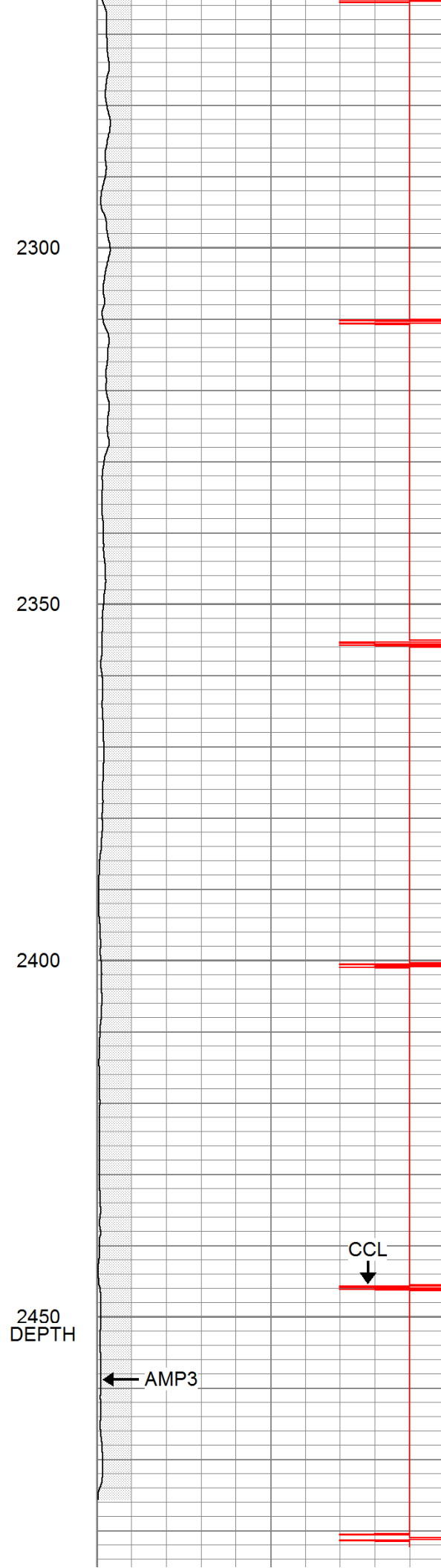
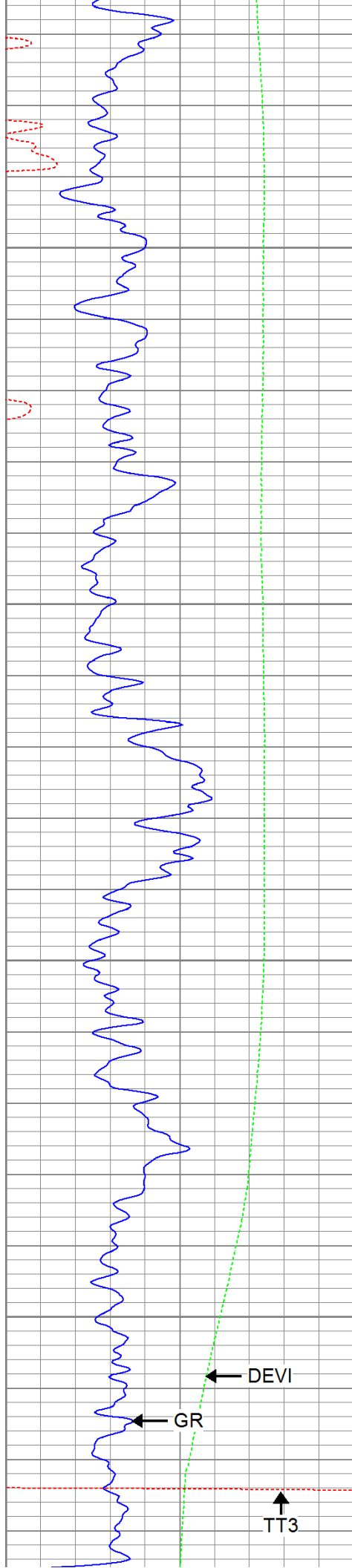
2100

2150

2200


2250





400	Travel Time (usec)	200	0	Amplitude (mV)	100	200	Variable Density	1200
0	GR (GAPI)	200	9	Collar Locator	-1			
0	DEVI (°)	10						

Calibration Report					
Database File:	ac30-1281111b.db				
Dataset Pathname:	pass3				
Dataset Creation:	Thu Aug 11 12:16:47 2011 by Log Open-Cased 110302				
Gamma Ray Calibration Report					
Serial Number:	080616				
Tool Model:	275D_INC				
Performed:	Wed Aug 10 09:13:03 2011				
Calibrator Value:	200.0	GAPI			
Background Reading:	50.0	cps			
Calibrator Reading:	250.0	cps			
Sensitivity:	1.0000	GAPI/cps			
Inclinometer Calibration Report					
Performed:	Wed Aug 10 09:13:09 2011				
	Low Read.	High Read.	Low Ref.	High Ref.	
X Accelerometer	-3585.20	3595.40	-1.00	1.00	gee
Y Accelerometer	-3619.40	3520.00	-1.00	1.00	gee
Z Accelerometer					
Cement Bond Log Calibration Report					
Serial Number:	081024				
Tool Model:	PROBEDIGITALCBL				
Performed:	Wed Aug 10 09:18:37 2011				
Depth:	93.4615	ft			
Casing Diameter:	5.5	in			
	3' Spacing	5' Spacing			
Signal Zero:	0	0	mV		
Calibrated Amplitude:	85	85	mV		
Reading at Signal Zero:	-0.00874023	-0.0092041	V		
Reading in Free Pipe:	1.72476	1.66304	V		
Gain:	49.0339	50.83			
Offset:	0.428567	0.467844			

Sensor	Offset (ft)	Schematic	Description	Len (ft)	OD (in)	Wt (lb)
			None	0.75	1.50	5.00
			Star	0.29	1.50	0.50

[illegible]