
XTO ENERGY INC EBUSINESS

Apache Canyon 30-12

Las Animas County , Colorado

Cement Surface Casing

21-Jul-2011

Job Site Documents

The Road to Excellence Starts with Safety

Sold To #: 353810	Ship To #: 2867075	Quote #:	Sales Order #: 8335159
Customer: XTO ENERGY INC EBUSINESS	Customer Rep:		
Well Name: Apache Canyon	Well #: 30-12	API/UWI #:	
Field:	City (SAP): TRINIDAD	County/Parish: Las Animas	State: Colorado
Contractor: Pense Drilling	Rig/Platform Name/Num: 19		
Job Purpose: Cement Surface Casing			
Well Type: Development Well	Job Type: Cement Surface Casing		
Sales Person: FLING, MATTHEW	Srvc Supervisor: ROSALES, MATTHEW	MBU ID Emp #: 392095	

Job Personnel

HES Emp Name	Exp Hrs	Emp #	HES Emp Name	Exp Hrs	Emp #	HES Emp Name	Exp Hrs	Emp #
BULINSKI, MATTHEW J	2	483865	KENNEDY, HERRON	2	498356	MCKAY, ADAM	2	498253
ROSALES, MATTHEW John	2	392095	VIGIL, NICHOLAS	2	443481			

Equipment

HES Unit #	Distance-1 way	HES Unit #	Distance-1 way	HES Unit #	Distance-1 way	HES Unit #	Distance-1 way
10824253C	25 mile	11527037	25 mile	11562544C	25 mile	11605598	25 mile

Job Hours

Date	On Location Hours	Operating Hours	Date	On Location Hours	Operating Hours	Date	On Location Hours	Operating Hours
07/22/11	2	1						

TOTAL	Total is the sum of each column separately							
-------	--	--	--	--	--	--	--	--

Job

Formation Name	Top	Bottom	Called Out	Date	Time	Time Zone
Formation Depth (MD)			On Location	21 - Jul - 2011	04:00	MST
Form Type		BHST	Job Started	21 - Jul - 2011	04:14	MST
Job depth MD	785. ft	Job Depth TVD	Job Completed	21 - Jul - 2011	04:53	MST
Water Depth		Wk Ht Above Floor	Departed Loc	21 - Jul - 2011	06:00	MST
Perforation Depth (MD)	From	To				

Well Data

Description	New / Used	Max pressure psig	Size in	ID in	Weight lbm/ft	Thread	Grade	Top MD ft	Bottom MD ft	Top TVD ft	Bottom TVD ft
11" Openhole				11.				45.	475.		
13 3/8" Conductor Casing	Unknown		13.375	12.715	48.			.	45.		
8 5/8" 24#	New		8.625	8.097	24.			.	467.9		

Tools and Accessories

Type	Size	Qty	Make	Depth	Type	Size	Qty	Make	Depth	Type	Size	Qty	Make
Guide Shoe					Packer					Top Plug			
Float Shoe					Bridge Plug					Bottom Plug			
Float Collar					Retainer					SSR plug set			
Insert Float										Plug Container			
Stage Tool										Centralizers			

Miscellaneous Materials

Gelling Agt	Conc	Surfactant	Conc	Acid Type	Qty	Conc	%
Treatment Fld	Conc	Inhibitor	Conc	Sand Type	Size		Qty

Fluid Data

Stage/Plug #: 1	Fluid #	Stage Type	Fluid Name	Qty	Qty uom	Mixing Density lbm/gal	Yield ft ³ /sk	Mix Fluid Gal/sk	Rate bbl/min	Total Mix Fluid Gal/s
-----------------	---------	------------	------------	-----	---------	------------------------	---------------------------	------------------	--------------	-----------------------

Stage/Plug #: 1

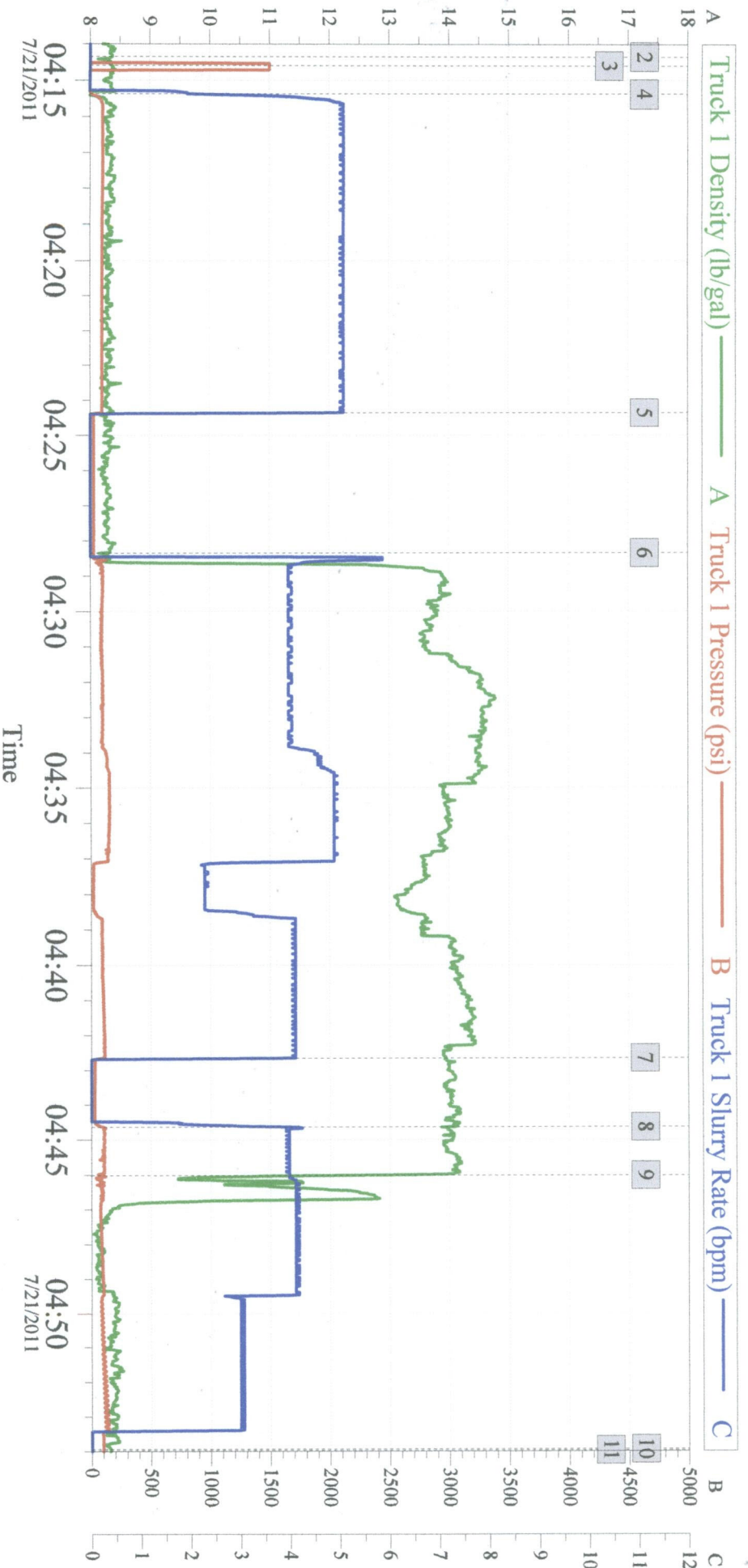
Stage/Plug #: 1									
Fluid #	Stage Type	Fluid Name	Qty	Qty uom	Mixing Density lbm/gal	Yield ft ³ /sk	Mix Fluid Gal/sk	Rate bbl/min	Total Mix Fluid Gal/sk
1	FRESH WATER			bbl	8.33	.0	.0	.0	
2	Trinidad Surface Blend	TRINIDAD SURFACE BLEND - SBM (137081)	225.0	sacks	14.	1.66	7.66	4.0	7.66
	0.125 lbm	POLY-E-FLAKE (101216940)							
	2 %	CAL-SEAL 60, 50 LB BAG (101217146)							
	2 %	ECONOLITE (100001580)							
	5 lbm	GILSONITE, 50 LB BAG (100001618)							
	0.2 %	VERSASET, 55 LB SK (101376573)							
	6 %	SALT, 100 LB BAG (100003652)							
	7.66 Gal	FRESH WATER							
3	DISPLACEMENT			bbl	8.33	.0	.0	.0	
Calculated Values		Pressures		Volumes					
Displacement	23.5	Shut In: Instant	97	Lost Returns	NO	Cement Slurry	66	Pad	
Top Of Cement	SURFACE	5 Min		Cement Returns	31BBL	Actual Displacement	23.5	Treatment	
Frac Gradient		15 Min		Spacers	58	Load and Breakdown		Total Job	147.5
Rates									
Circulating		Mixing		Displacement		Avg. Job			4
Cement Left In Pipe	Amount	0100ft	Reason	Shoe Joint					
Frac Ring # 1 @	ID		Frac ring # 2 @	ID		Frac Ring # 3 @	ID		Frac Ring # 4 @
The Information Stated Herein Is Correct				Customer Representative Signature					

The Road to Excellence Starts with Safety

Sold To #: 353810		Ship To #: 2867075		Quote #:		Sales Order #: 8335159	
Customer: XTO ENERGY INC EBUSINESS				Customer Rep:			
Well Name: Apache Canyon			Well #: 30-12		API/UWI #:		
Field:		City (SAP): TRINIDAD		County/Parish: Las Animas		State: Colorado	
Legal Description:							
Lat:				Long:			
Contractor: Pense Drilling			Rig/Platform Name/Num: 19				
Job Purpose: Cement Surface Casing						Ticket Amount:	
Well Type: Development Well			Job Type: Cement Surface Casing				
Sales Person: FLING, MATTHEW			Srvc Supervisor: ROSALES, MATTHEW/MBU ID Emp #: 392095				

Activity Description	Date/Time	Cht #	Rate bbl/min	Volume bbl		Pressure psig		Comments
				Stage	Total	Tubing	Casing	
Start Job	07/21/2011 04:14							
Test Lines	07/21/2011 04:14		0.5	0.5			1500.0	
Circulate Well	07/21/2011 04:15		5	42			11.0	
Shutdown	07/21/2011 04:24							SHUTDOWN CHECK FOR FALL BACK
Pump Cement	07/21/2011 04:28		4	58			28.0	TOTAL 225SKS MIXED WITH WATER PROVIDED BY RIG
Shutdown	07/21/2011 04:42							SHUTDOWN CHECK FOR FALL BACK
Pump Cement	07/21/2011 04:44		4	8			97.0	PUMP REMAINDER OF CEMENT IN TUB
Pump Displacement	07/21/2011 04:46		4	23.5			96.0	
Shut In Well	07/21/2011 04:53						96.0	
End Job	07/21/2011 04:55							TOTAL CMT TO PIT 31BBL

XTO - Apache Canyon 30-12 Surface



Customer: XTO
 Well Description: Apache Canyon 30-12
 Halliburton Service Supervisor Mathew J. Rosales

Job Date: 21-Jul-2011
 Halliburton Operator: Nick Vigil

Sales Order #: 8335159
 XTO Customer Rep. Ron Coffee