
XTO ENERGY INC EBUSINESS

Apache Canyon 30-07

Las Animas County , Colorado

Cement Conductor Casing

18-Jul-2011

Job Site Documents

The Road to Excellence Starts with Safety

| | | | |
|--------------------------------------|-----------------------------------|---------------------------|------------------------|
| Sold To #: 353810 | Ship To #: 2866468 | Quote #: | Sales Order #: 8328425 |
| Customer: XTO ENERGY INC EBUSINESS | Customer Rep: | | |
| Well Name: Apache Canyon | Well #: 30-07 | API/UWI #: | |
| Field: | City (SAP): TRINIDAD | County/Parish: Las Animas | State: Colorado |
| Contractor: Pense Drilling | Rig/Platform Name/Num: 19 | | |
| Job Purpose: Cement Conductor Casing | | | |
| Well Type: Development Well | Job Type: Cement Conductor Casing | | |
| Sales Person: FLING, MATTHEW | Srvc Supervisor: ROSALES, MATTHEW | MBU ID Emp #: 392095 | |

Job Personnel

| HES Emp Name | Exp Hrs | Emp # | HES Emp Name | Exp Hrs | Emp # | HES Emp Name | Exp Hrs | Emp # |
|---------------------|---------|--------|------------------|---------|--------|-----------------------|---------|--------|
| BULINSKI, MATTHEW J | 4.5 | 483865 | DIRKS, RICHARD E | 4.5 | 485940 | KENNEDY, HERRON | 4.5 | 498356 |
| LYNCH, JACK William | 4.5 | 1 | MCKAY, ADAM | 4.5 | 498253 | ROSALES, MATTHEW John | 4.5 | 392095 |
| VIGIL, NICHOLAS | 4.5 | 443481 | | | | | | |

Equipment

| HES Unit # | Distance-1 way | HES Unit # | Distance-1 way | HES Unit # | Distance-1 way | HES Unit # | Distance-1 way |
|------------|----------------|------------|----------------|------------|----------------|------------|----------------|
| 10824253C | 50 mile | 11527037 | 50 mile | 11562544C | 50 mile | 11605598 | 50 mile |

Job Hours

| Date | On Location Hours | Operating Hours | Date | On Location Hours | Operating Hours | Date | On Location Hours | Operating Hours |
|----------|-------------------|-----------------|------|-------------------|-----------------|------|-------------------|-----------------|
| 07/18/11 | 4.5 | 4 | | | | | | |

TOTAL Total is the sum of each column separately

Job

| Formation Name | Top | Bottom | Called Out | Date | Time | Time Zone |
|------------------------|---------|-------------------|---------------|-----------------|-------|-----------|
| Formation Depth (MD) | | | On Location | 18 - Jul - 2011 | 04:30 | MST |
| Form Type | | BHST | Job Started | 18 - Jul - 2011 | 12:30 | MST |
| Job depth MD | 450. ft | Job Depth TVD | Job Completed | 18 - Jul - 2011 | 13:16 | MST |
| Water Depth | | Wk Ht Above Floor | Departed Loc | 18 - Jul - 2011 | 14:58 | MST |
| Perforation Depth (MD) | From | To | | 18 - Jul - 2011 | 17:00 | MST |

Well Data

| Description | New / Used | Max pressure psig | Size in | ID in | Weight lbm/ft | Thread | Grade | Top MD ft | Bottom MD ft | Top TVD ft | Bottom TVD ft |
|--------------------------|------------|-------------------|---------|--------|---------------|--------|-------|-----------|--------------|------------|---------------|
| 17 1/2" Openhole | | | | 11. | | | | | 43. | | |
| 13 3/8" Conductor Casing | Unknown | | 13.375 | 12.715 | 48. | | | | 43. | | |

Tools and Accessories

| Type | Size | Qty | Make | Depth | Type | Size | Qty | Make | Depth | Type | Size | Qty | Make |
|--------------|------|-----|------|-------|-------------|------|-----|------|-------|----------------|------|-----|------|
| Guide Shoe | | | | | Packer | | | | | Top Plug | | | |
| Float Shoe | | | | | Bridge Plug | | | | | Bottom Plug | | | |
| Float Collar | | | | | Retainer | | | | | SSR plug set | | | |
| Insert Float | | | | | | | | | | Plug Container | | | |
| Stage Tool | | | | | | | | | | Centralizers | | | |

Miscellaneous Materials

| Gelling Agt | Conc | Surfactant | Conc | Acid Type | Qty | Conc % |
|---------------|------|------------|------|-----------|------|--------|
| Treatment Fld | Conc | Inhibitor | Conc | Sand Type | Size | Qty |

Fluid Data

| Stage/Plug #: 1 | Fluid Name | Qty | Qty uom | Mixing Density lbm/gal | Yield ft3/sk | Mix Fluid Gal/sk | Rate bbl/min | Total Mix Fluid Gal/sk |
|-----------------|------------|-----|---------|------------------------|--------------|------------------|--------------|------------------------|
| Fluid # | Stage Type | | | | | | | |

| Stage/Plug #: 1 | | | | | | | | | |
|--|------------------------|---------------------------------------|--------|-----------------------------------|------------------------|---------------------------|------------------|--------------|------------------------|
| Fluid # | Stage Type | Fluid Name | Qty | Qty uom | Mixing Density lbm/gal | Yield ft ³ /sk | Mix Fluid Gal/sk | Rate bbl/min | Total Mix Fluid Gal/sk |
| 1 | FRESH WATER | | | bbl | 8.33 | .0 | .0 | .0 | |
| 2 | Trinidad Surface Blend | TRINIDAD SURFACE BLEND - SBM (137081) | 266.0 | sacks | 14. | 1.66 | 7.76 | 4.0 | 7.76 |
| | 0.125 lbm | POLY-E-FLAKE (101216940) | | | | | | | |
| | 2 % | CAL-SEAL 60, 50 LB BAG (101217146) | | | | | | | |
| | 2 % | ECONOLITE (100001580) | | | | | | | |
| | 5 lbm | GILSONITE, 50 LB BAG (100001618) | | | | | | | |
| | 0.2 % | VERSASET, 55 LB SK (101376573) | | | | | | | |
| | 6 % | SALT, 100 LB BAG (100003652) | | | | | | | |
| | 7.76 Gal | FRESH WATER | | | | | | | |
| 3 | DISPLACEMENT | | | bbl | 8.33 | .0 | .0 | .0 | |
| Calculated Values | | Pressures | | Volumes | | | | | |
| Displacement | | Shut In: Instant | | Lost Returns | | Cement Slurry | 78 | Pad | |
| Top Of Cement | SURFACE | 5 Min | | Cement Returns | | Actual Displacement | | Treatment | |
| Frac Gradient | | 15 Min | | Spacers | | Load and Breakdown | | Total Job | |
| Rates | | | | | | | | | |
| Circulating | | Mixing | | Displacement | | Avg. Job | | | |
| Cement Left In Pipe | Amount | 0 ft | Reason | Shoe Joint | | | | | |
| Frac Ring # 1 @ | ID | Frac ring # 2 @ | ID | Frac Ring # 3 @ | ID | Frac Ring # 4 @ | ID | | |
| The Information Stated Herein Is Correct | | | | Customer Representative Signature | | | | | |

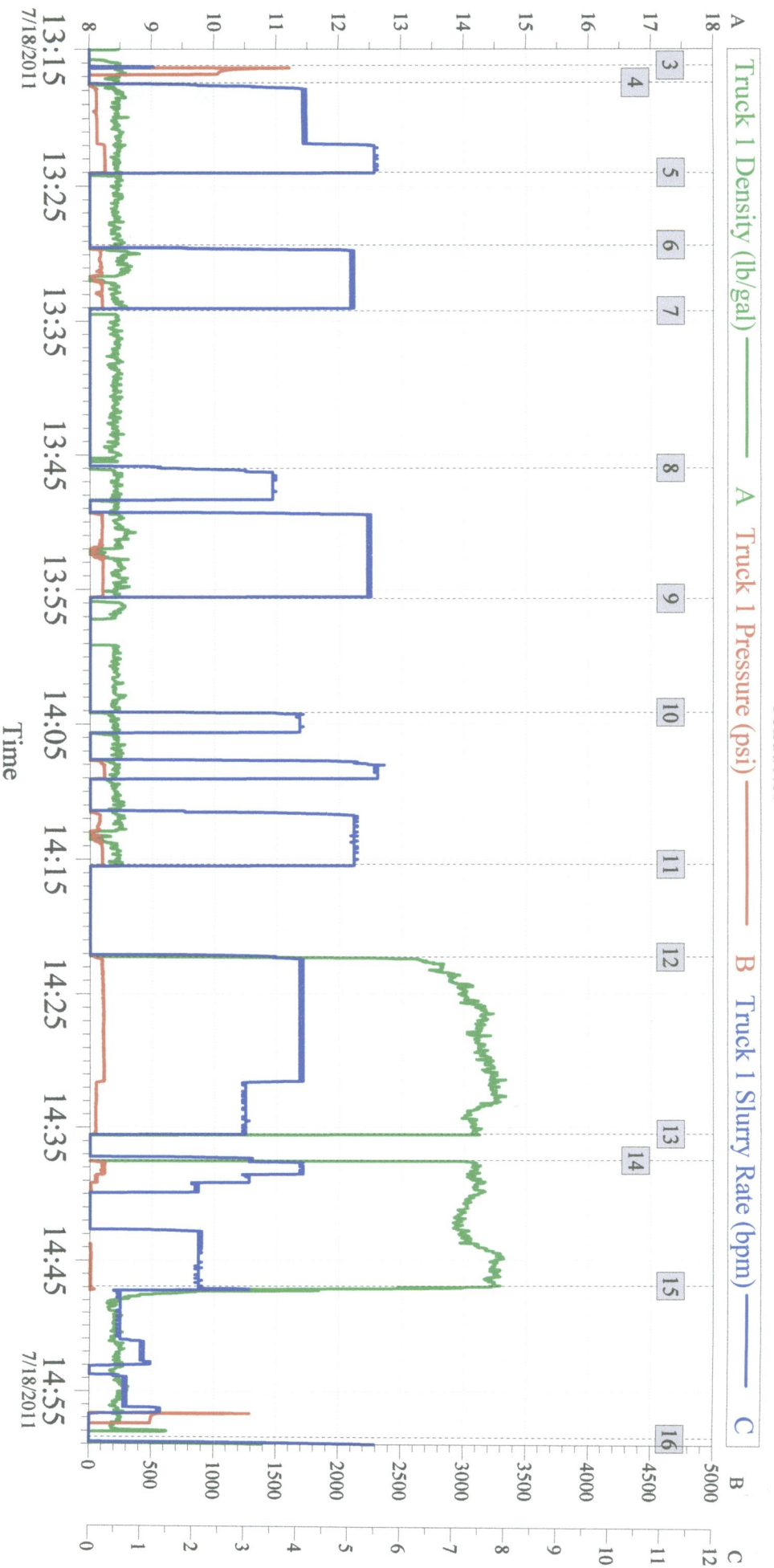
The Road to Excellence Starts with Safety

| | | | | | | | |
|--------------------------------------|--|----------------------|-----------------------------------|---------------------------|------------|------------------------|--|
| Sold To #: 353810 | | Ship To #: 2866468 | | Quote #: | | Sales Order #: 8328425 | |
| Customer: XTO ENERGY INC EBUSINESS | | | | Customer Rep: | | | |
| Well Name: Apache Canyon | | | Well #: 30-07 | | API/UWI #: | | |
| Field: | | City (SAP): TRINIDAD | | County/Parish: Las Animas | | State: Colorado | |
| Legal Description: | | | | | | | |
| Lat: | | | | Long: | | | |
| Contractor: Pense Drilling | | | Rig/Platform Name/Num: 19 | | | | |
| Job Purpose: Cement Conductor Casing | | | | | | Ticket Amount: | |
| Well Type: Development Well | | | Job Type: Cement Conductor Casing | | | | |
| Sales Person: FLING, MATTHEW | | | Srcv Supervisor: ROSALES, MATTHEW | | | MBU ID Emp #: 392095 | |

| Activity Description | Date/Time | Cht # | Rate bbl/min | Volume bbl | | Pressure psig | | Comments |
|----------------------|------------------|-------|--------------|------------|-------|---------------|--------|--|
| | | | | Stage | Total | Tubing | Casing | |
| Start Job | 07/18/2011 13:16 | | | | | | | |
| Test Lines | 07/18/2011 13:17 | | 0.5 | | | | 2000.0 | |
| Circulate Well | 07/18/2011 13:17 | | 4 | 25 | 25 | | .0 | WELL DID NOT CIRCULATE |
| Shutdown | 07/18/2011 13:23 | | | | | | | MIX LOST CIRCULATION PILL |
| Pump Spacer 1 | 07/18/2011 13:29 | | 4 | 25 | 50 | | .0 | PUMP LCM PILL |
| Shutdown | 07/18/2011 13:34 | | | | | | | SHUTDOWN MIX LOST CIRCULATION PILL |
| Pump Spacer 1 | 07/18/2011 13:46 | | 4 | 20 | 70 | | .0 | PUMP LCM PILL |
| Shutdown | 07/18/2011 13:55 | | | | | | | SHUTDOWN MIX LOST CIRCULATION PILL |
| Pump Spacer 1 | 07/18/2011 14:04 | | 4 | 30 | 100 | | .0 | PUMP LCM PILL |
| Shutdown | 07/18/2011 14:15 | | | | | | | SHUTDOWN MIX CEMENT |
| Pump Cement | 07/18/2011 14:22 | | 4 | 62 | 162 | | .0 | 239SKS MIXED WITH WATER PROVIDED BY RIG |
| Shutdown | 07/18/2011 14:35 | | | | | | | SHUTDOWN CHECK FOR FALL BACK, CEMENT IMMEDIATELY FELL BACK |
| Pump Cement | 07/18/2011 14:37 | | 4 | 8 | 170 | | .0 | PUMP REMAINDER OF CEMENT IN MIXING TUB |
| Pump Displacement | 07/18/2011 14:46 | | 0.5 | 4 | 174 | | 500.0 | |
| Shut In Well | 07/18/2011 14:58 | | | | | | 1400.0 | ISIP 1400, |
| Shutdown | 07/18/2011 15:00 | | | | | | | WAIT TO TOP OFF WELL |

| Activity Description | Date/Time | Cht # | Rate bbl/ min | Volume bbl | | Pressure psig | | Comments |
|----------------------|---------------------|----------|---------------------|---------------|-------|------------------|--------|-----------------------------------|
| | | | | Stage | Total | Tubing | Casing | |
| End Job | 07/18/2011 16:09 | | | | | | | CEMENT HELD |
| Pump Cement | 07/18/2011 16:16 | | 2 | 8 | 182 | | 14.0 | 4 BBL TO GET CEMENT TO SURFACE |

XTO - Apache Canyon 30-7 Conductor



| Global Event Log | | | | |
|-------------------------|-----------------|----------------------------------|-----------------|---------------------------------|
| Intersection | TIP | Intersection | TIP | Intersection |
| 3 Test Lines | 13:16:12 -5.440 | 4 Circulate Well | 13:17:28 -7.778 | 5 Shutdown Mix LCM Pill |
| 6 Pump LCM Pill | 13:29:17 -15.70 | 7 Shutdown Mix LCM Pill | 13:34:12 -11.67 | 8 Pump LCM Pill |
| 9 Shutdown Mix LCM Pill | 13:55:39 -26.25 | 10 Pump LCM Pill | 14:04:08 -25.26 | 11 Shut Down Mix Cement |
| 12 Pump Cement | 14:22:16 34.69 | 13 Shut Down Check For Fall Back | 14:35:29 48.05 | 14 Pump Remainder of Cement Tub |
| 15 Pump Displacement | 14:46:56 -1.471 | 16 Shut In Well 500psi End Job | 14:58:28 -30.32 | |

Customer: XTO
 Well Description: Apache Canyon 30-7
 Halliburton Service Supervisor: Matthew J. Rosales

Job Date: 18-Jul-2011
 Halliburton Operator: Nick Vigil

Sales Order #: 8328425