

---

# **XTO ENERGY INC EBUSINESS**

---

**Apache Canyon 30-07**

**Las Animas County , Colorado**

**Cement Surface Casing**  
**19-Jul-2011**

**Job Site Documents**

## The Road to Excellence Starts with Safety

Sold To #: 353810	Ship To #: 2866468	Quote #:	Sales Order #: 8328426
Customer: XTO ENERGY INC EBUSINESS		Customer Rep:	
Well Name: Apache Canyon	Well #: 30-07	API/UWI #:	
Field:	City (SAP): TRINIDAD	County/Parish: Las Animas	State: Colorado
Contractor: Pense Drilling	Rig/Platform Name/Num: 19		
Job Purpose: Cement Surface Casing			
Well Type: Development Well	Job Type: Cement Surface Casing		
Sales Person: FLING, MATTHEW	Srvc Supervisor: ROSALES, MATTHEW	MBU ID Emp #: 392095	

## Job Personnel

HES Emp Name	Exp Hrs	Emp #	HES Emp Name	Exp Hrs	Emp #	HES Emp Name	Exp Hrs	Emp #
BULINSKI, MATTHEW J	5.5	483865	KENNEDY, HERRON	5.5	498356	MCKAY, ADAM	5.5	498253
ROSALES, MATTHEW John	5.5	392095	VIGIL, NICHOLAS	5.5	443481			

## Equipment

HES Unit #	Distance-1 way	HES Unit #	Distance-1 way	HES Unit #	Distance-1 way	HES Unit #	Distance-1 way
10824253C	50 mile	11527037	50 mile	11562544C	50 mile	11605598	50 mile

## Job Hours

Date	On Location Hours	Operating Hours	Date	On Location Hours	Operating Hours	Date	On Location Hours	Operating Hours
07/19/11	5.5	1.5						
TOTAL			Total is the sum of each column separately					

## Job

## Job Times

Formation Name	Formation Depth (MD)	Top	Bottom	Called Out	Date	Time	Time Zone
Form Type		BHST		On Location	19 - Jul - 2011	02:00	MST
Job depth MD	785 ft	Job Depth TVD	785. ft	Job Started	19 - Jul - 2011	05:45	MST
Water Depth		Wk Ht Above Floor		Job Completed	19 - Jul - 2011	06:40	MST
Perforation Depth (MD)	From	To		Departed Loc	19 - Jul - 2011	07:30	MST

## Well Data

Description	New / Used	Max pressure psig	Size in	ID in	Weight lbm/ft	Thread	Grade	Top MD ft	Bottom MD ft	Top TVD ft	Bottom TVD ft
11" Openhole				11.				50.	461.		
13 3/8" Conductor Casing	Unknown		13.375	12.715	48.			50.			

## Tools and Accessories

Type	Size	Qty	Make	Depth	Type	Size	Qty	Make	Depth	Type	Size	Qty	Make
Guide Shoe					Packer					Top Plug			
Float Shoe					Bridge Plug					Bottom Plug			
Float Collar					Retainer					SSR plug set			
Insert Float										Plug Container			
Stage Tool										Centralizers			

## Miscellaneous Materials

Gelling Agt	Conc	Surfactant	Conc	Acid Type	Qty	Conc	%
Treatment Fld	Conc	Inhibitor	Conc	Sand Type	Size	Qty	

## Fluid Data

Stage/Plug #: 1	Fluid #	Stage Type	Fluid Name	Qty	Qty uom	Mixing Density lbm/gal	Yield ft <sup>3</sup> /sk	Mix Fluid Gal/sk	Rate bbl/min	Total Mix Fluid Gal/sk
-----------------	---------	------------	------------	-----	---------	------------------------	---------------------------	------------------	--------------	------------------------

Stage/Plug #: 1



Stage/Plug #: 1									
Fluid #	Stage Type	Fluid Name	Qty	Qty uom	Mixing Density lbm/gal	Yield ft <sup>3</sup> /sk	Mix Fluid Gal/sk	Rate bbl/min	Total Mix Fluid Gal/sk
1	FRESH WATER			bbl	8.33	.0	.0	.0	
2	Trinidad Surface Blend	TRINIDAD SURFACE BLEND - SBM (137081)	211	sacks	14.	1.66	7.66	4.0	7.66
	0.125 lbm	POLY-E-FLAKE (101216940)							
	2 %	CAL-SEAL 60, 50 LB BAG (101217146)							
	2 %	ECONOLITE (100001580)							
	5 lbm	GILSONITE, 50 LB BAG (100001618)							
	0.2 %	VERSASET, 55 LB SK (101376573)							
	6 %	SALT, 100 LB BAG (100003652)							
	7.66 Gal	FRESH WATER							
3	DISPLACEMENT			bbl	8.33	.0	.0	.0	
Calculated Values		Pressures		Volumes					
Displacement	23	Shut In: Instant	123.5	Lost Returns	NO	Cement Slurry	62	Pad	
Top Of Cement	SURFACE	5 Min		Cement Returns	31BBL	Actual Displacement	23	Treatment	
Frac Gradient		15 Min		Spacers	54	Load and Breakdown		Total Job	130
Rates									
Circulating		Mixing		Displacement		Avg. Job		4	
Cement Left In Pipe	Amount	100 ft	Reason	Shoe Joint					
Frac Ring # 1 @	ID	Frac ring # 2 @	ID	Frac Ring # 3 @	ID	Frac Ring # 4 @	ID		
The Information Stated Herein Is Correct				Customer Representative Signature					

*The Road to Excellence Starts with Safety*

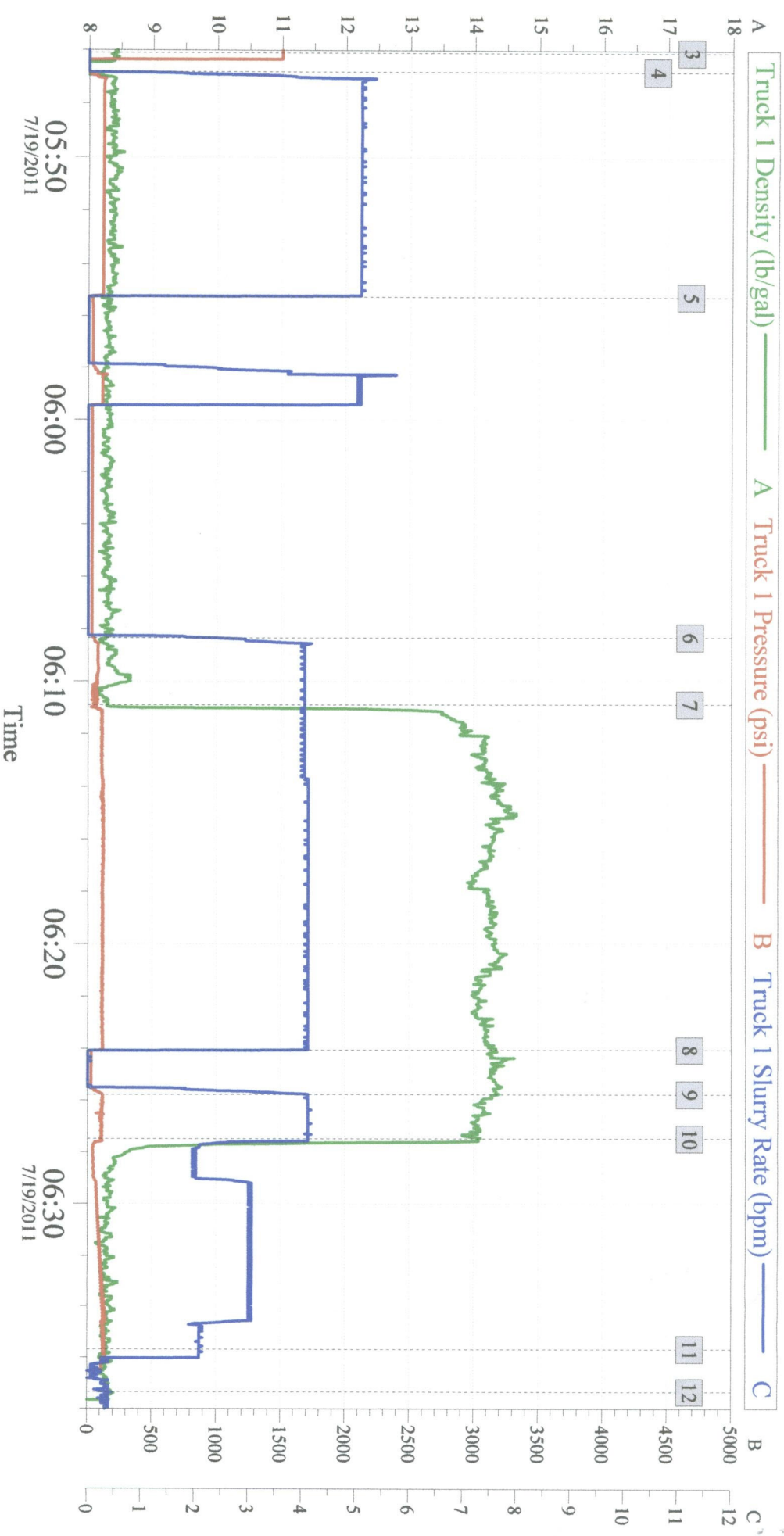
Sold To #: 353810	Ship To #: 2866468	Quote #:	Sales Order #: 8328426
Customer: XTO ENERGY INC EBUSINESS	Customer Rep:		
Well Name: Apache Canyon	Well #: 30-07	API/UWI #:	
Field:	City (SAP): TRINIDAD	County/Parish: Las Animas	State: Colorado
Legal Description:			
Lat:		Long:	
Contractor: Pense Drilling	Rig/Platform Name/Num: 19		
Job Purpose: Cement Surface Casing	Ticket Amount:		
Well Type: Development Well	Job Type: Cement Surface Casing		
Sales Person: FLING, MATTHEW	Srvc Supervisor: ROSALES, MATTHEW	MBU ID Emp #: 392095	

Activity Description	Date/Time	Cht #	Rate bbl/ min	Volume bbl		Pressure psig		Comments
				Stage	Total	Tubing	Casing	
Call Out	07/19/2011 02:00							
Arrive At Loc	07/19/2011 02:00							
Pre-Rig Up Safety Meeting	07/19/2011 05:20							
Rig-Up Equipment	07/19/2011 05:30							
Rig-Up Completed	07/19/2011 05:40							
Pre-Job Safety Meeting	07/19/2011 05:41							
Start Job	07/19/2011 05:46							
Test Lines	07/19/2011 05:46		0.5	0.5			1500. 0	
Circulate Well	07/19/2011 05:46		5	39	39		75.0	
Shutdown	07/19/2011 05:55							WELL FELL BACK MIX LCM PILL
Pump Spacer 1	07/19/2011 06:08		5	15	54		70.0	LOST CIRCULATION GEL PILL
Pump Cement	07/19/2011 06:10		4	53	107		85.0	211SKS MIXED WITH WATER PROVIDED BY RIG
Shutdown	07/19/2011 06:24							CHECK FOR FALL BACK
Pump Displacement	07/19/2011 06:27		3	23	130		99.0	
ISIP	07/19/2011 06:35						123.5	
End Job	07/19/2011 06:36							31BBL CEMENT RETURNS
Pre-Rig Down Safety Meeting	07/19/2011 06:40							

Activity Description	Date/Time	Cht #	Rate bbl/ min	Volume bbl		Pressure psig		Comments
				Stage	Total	Tubing	Casing	
Rig-Down Equipment	07/19/2011 06:50							
Rig-Down Completed	07/19/2011 07:20							
Depart Location for Service Center or Other Site	07/19/2011 07:30							



# XTO - Apache Canyon 30-7 Surface



Global Event Log			
Intersection	TIP	Intersection	TIP
3 Test Lines	05:46:06 1500	4 Circulate Well	05:46:49 -0.972
6 LCM Pill	06:08:20 45.70	7 Pump Cement	06:10:54 61.31
9 Pump Remainder of Cement Tub	06:25:47 117.1	10 Pump Displacement	06:27:30 99.62
12 End Job	06:37:21 -12.64	11 Shut In Well	06:35:41 123.5
		5 Shutdown Check for Fall Back	05:55:15 25.77
		8 Shutdown Check for Fall Back	06:24:03 87.58