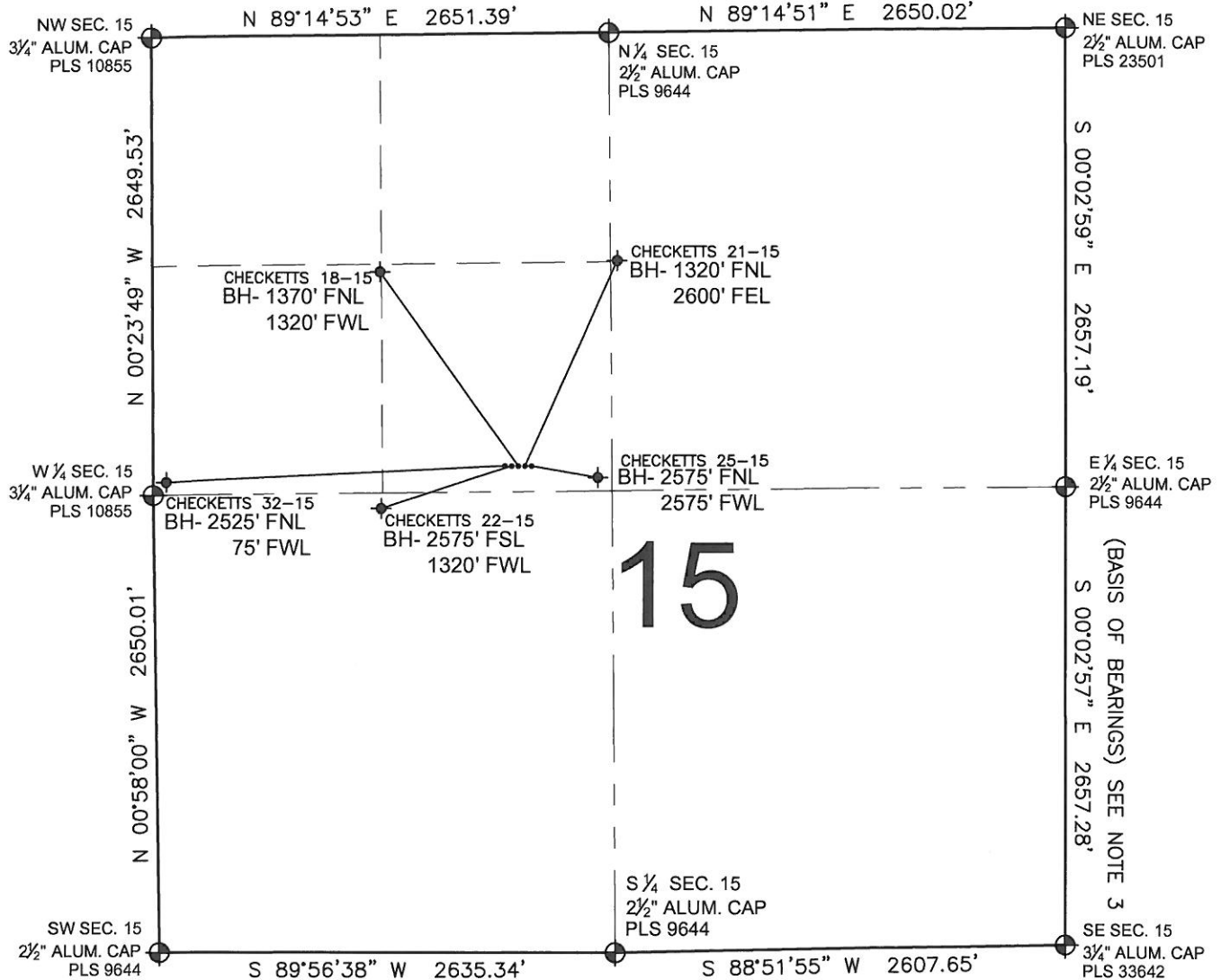


# PAD DRAWING - CHECKETTS 5 PAD

SECTION 15, TOWNSHIP 4 NORTH, RANGE 65 WEST, 6TH P.M.



## LEGEND

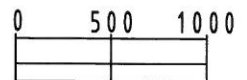
- = EXISTING MONUMENT   
 = BOTTOM HOLE   
 BH= BOTTOM HOLE  
 = PROPOSED WELL   
 = EXISTING WELL

## NOTES:

- THIS SURVEY WAS DONE BY GPS METHODS AND CONFORMS TO THE MINIMUM STANDARDS SET BY THE C.O.G.C.C., RULE NO. 215
- ELEVATIONS SHOWN AT THE WELL HEAD, AS WELL AS HORIZONTAL CONTROL, ARE BASED ON GPS-RTK VALUES DERIVED FROM DOING 2-HOUR STATIC GPS SESSIONS AND REDUCTIONS USING O.P.U.S. SOLUTIONS.  
VERTICAL = NAVD88; HORIZONTAL = NAD83/92
- THE BEARINGS SHOWN HEREON ARE BASED ON GPS OBSERVATIONS BETWEEN THE MONUMENTS SHOWN HEREON AS FOUND ON THE FIELD DATE BELOW.
- DISTANCES SHOWN ARE AT GROUND LEVEL, AS MEASURED IN THE FIELD, WITH TIES TO WELLS MEASURED AT A PERPENDICULAR TO SECTION LINES.

## NOTES:

- CHECKETTS 32-15 TO BE AT 2502' FNL, 2081' FWL.  
 BOTTOM HOLE AT 2525' FNL & 75' FWL.  
 CHECKETTS 22-15 TO BE AT 2502' FNL, 2097' FWL.  
 BOTTOM HOLE AT 2575' FSL & 1320' FWL.  
 CHECKETTS 18-15 TO BE AT 2502' FNL, 2113' FWL.  
 BOTTOM HOLE AT 1370' FNL & 1320' FWL.  
 CHECKETTS 21-15 TO BE AT 2502' FNL, 2129' FWL.  
 BOTTOM HOLE AT 1320' FNL & 2600' FEL.  
 CHECKETTS 25-15 TO BE AT 2503' FNL, 2145' FWL.  
 BOTTOM HOLE AT 2575' FNL & 2575' FWL.



SCALE: 1"=1000'

## REVISIONS

INITIAL	DATE
TJN	01-04-11
TJN	01-06-11
SMF	01-13-11

PREPARED BY:

**PFS**

Petroleum Field Services, LLC  
1801 W. 13th Ave.  
Denver, CO 80204



KERR-MCGEE OIL & GAS ONSHORE LP

FIELD DATE:  
12-06-10

DRAWING DATE:  
12-09-10

BY:  
SMF

PAD NAME:  
CHECKETTS 5 PAD

SURFACE LOCATION:

WELD COUNTY, COLORADO  
SE 1/4 NW 1/4, SEC. 15, T4N, R65W