



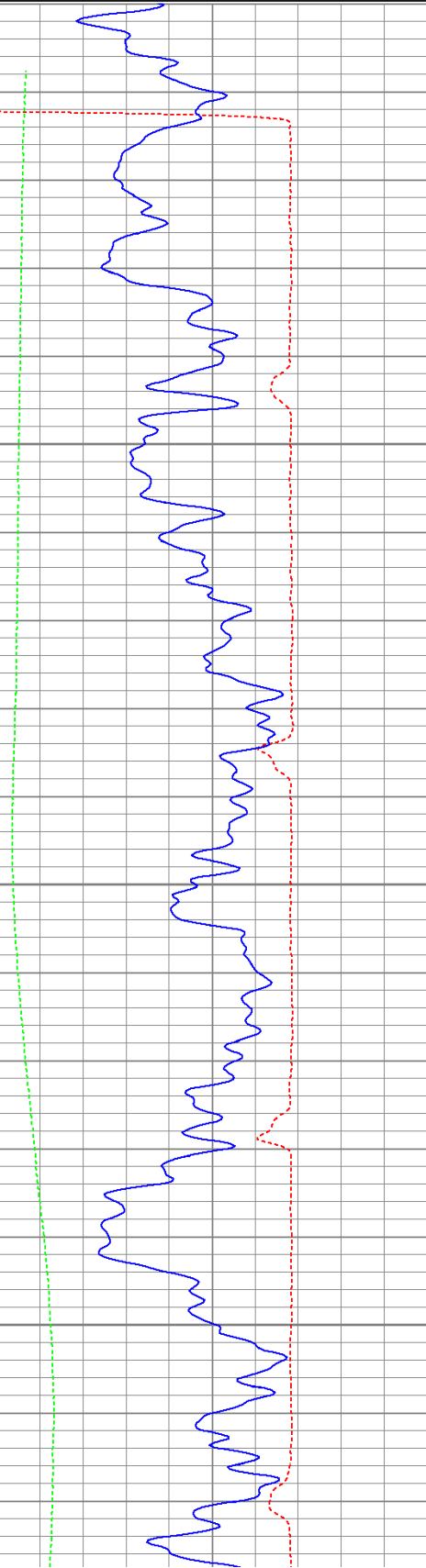
<<< Fold Here >>>
All interpretations are opinions based on inferences from electrical or other measurements and we cannot and do not guarantee the accuracy or correctness of any interpretation, and we shall not, except in the case of gross or willful negligence on our part, be liable or responsible for any loss, costs, damages, or expenses incurred or sustained by anyone resulting from any interpretation made by any of our officers, agents or employees. These interpretations are also subject to our general terms and conditions set out in our current Price Schedule.
<b>Comments</b>
<p>Directions:</p> <p>Sarcillo to La Garita (C.R. 30.1), turn right on Aspen Lane, follw road and turn right on Lark Bunting Lane, first left, dead end on location.</p>

Database File: wildfire61311b.db  
Dataset Pathname: pass2.1  
Presentation Format: cbldig  
Dataset Creation: Mon Jun 13 10:46:59 2011 by Calc Open-Cased 110302  
Charted by: Depth in Feet scaled 1:240

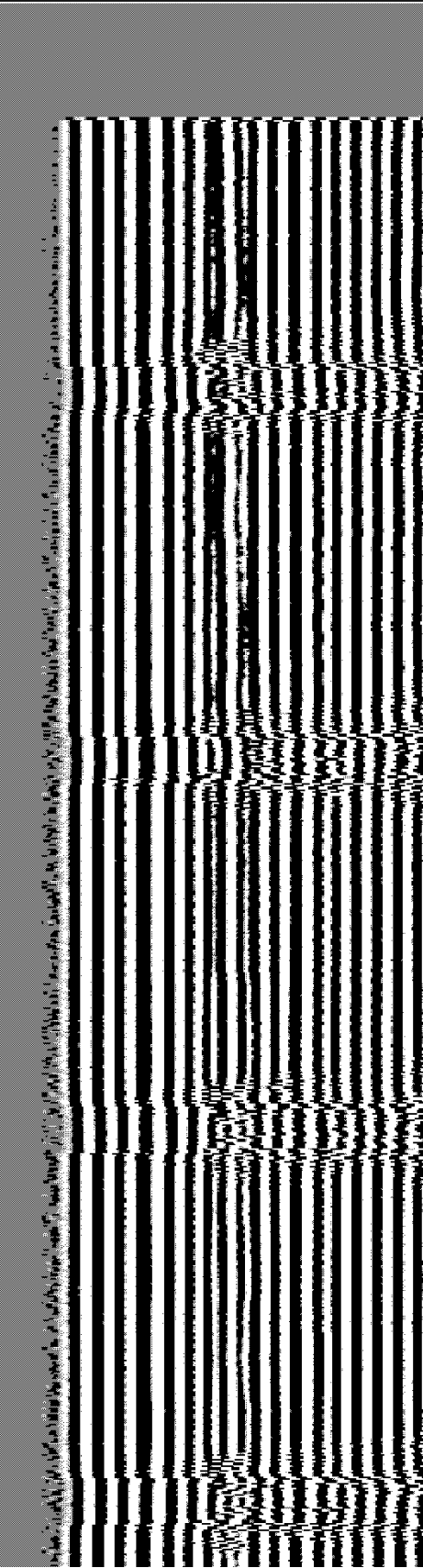
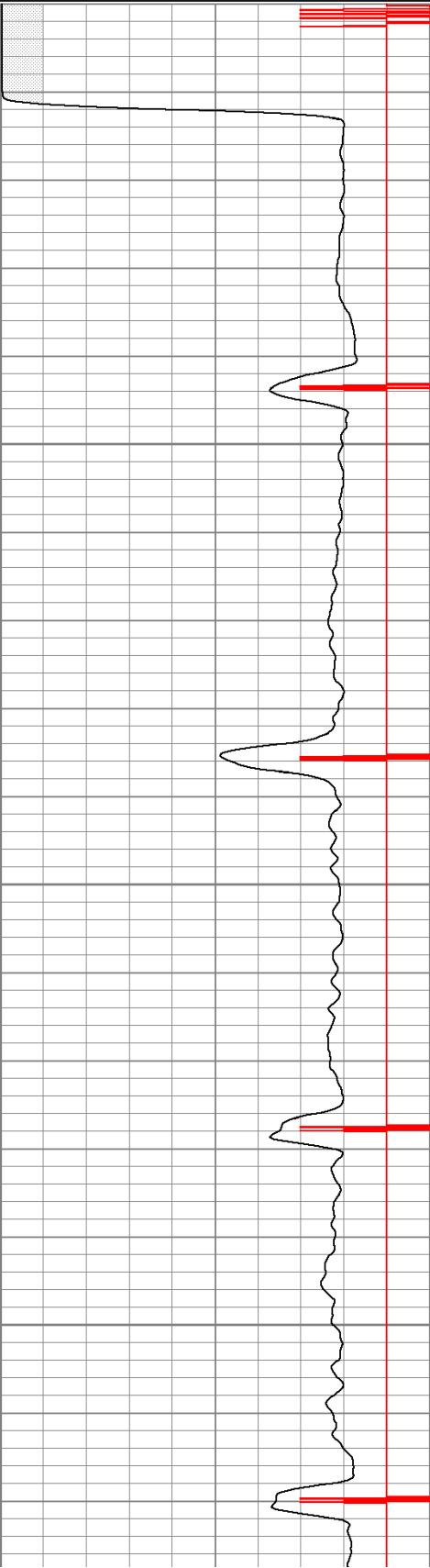
400	Travel Time (usec)	200
0	GR (GAPI)	200
0	DEVI (°)	10

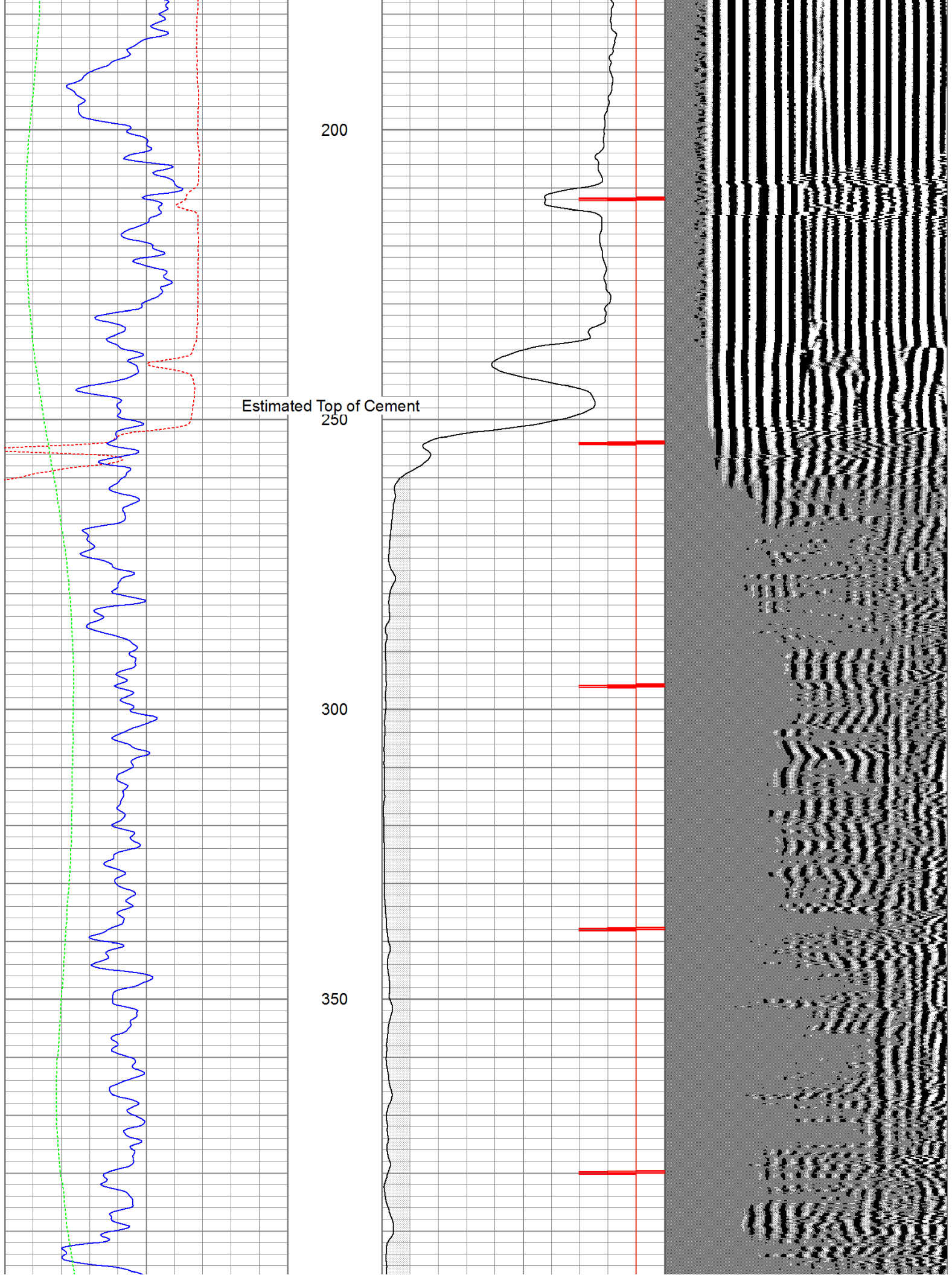
0	Amplitude (mV)	100
9	Collar Locator	-1

200 Variable Density 1200

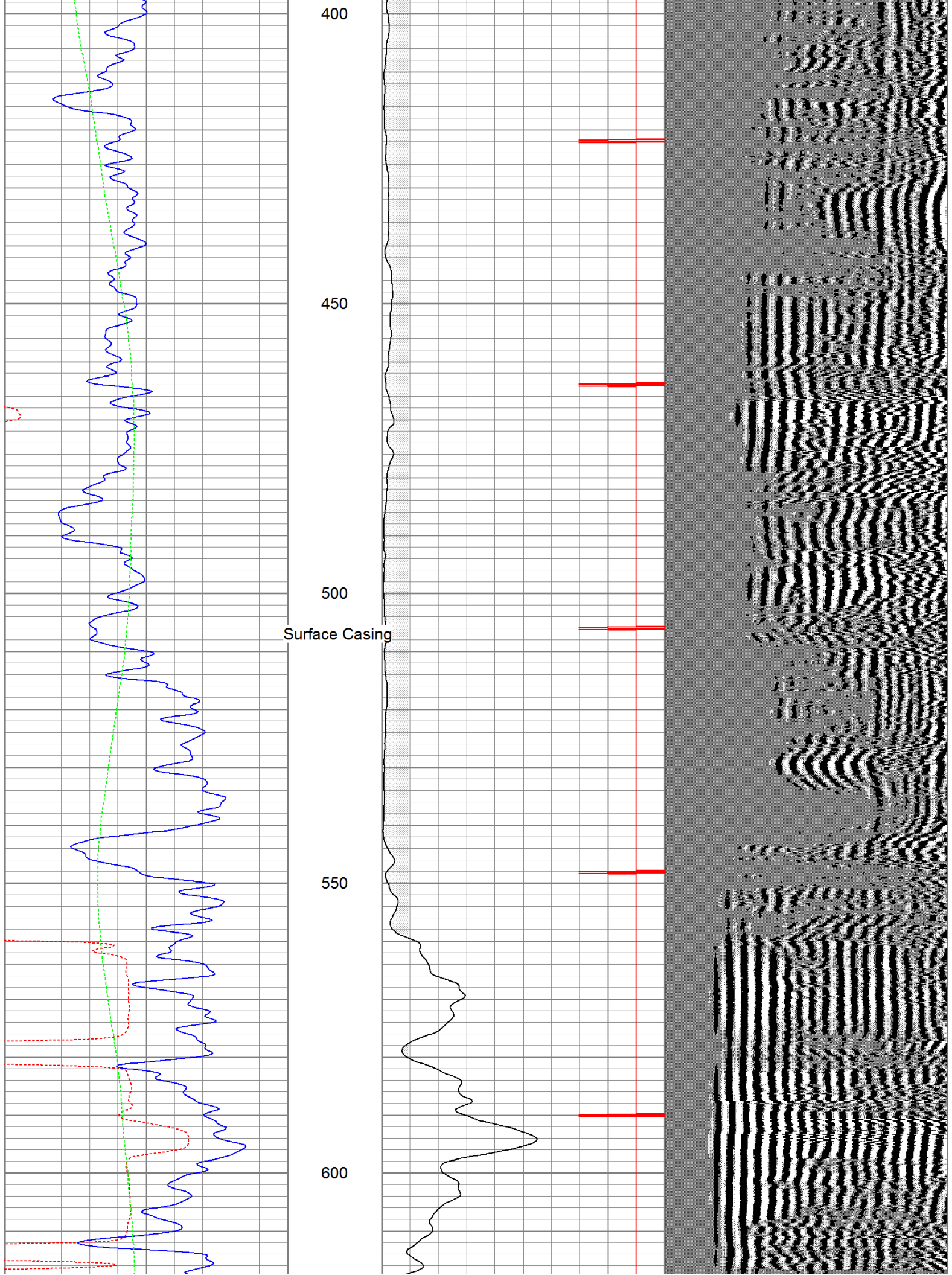


0  
50  
100  
150

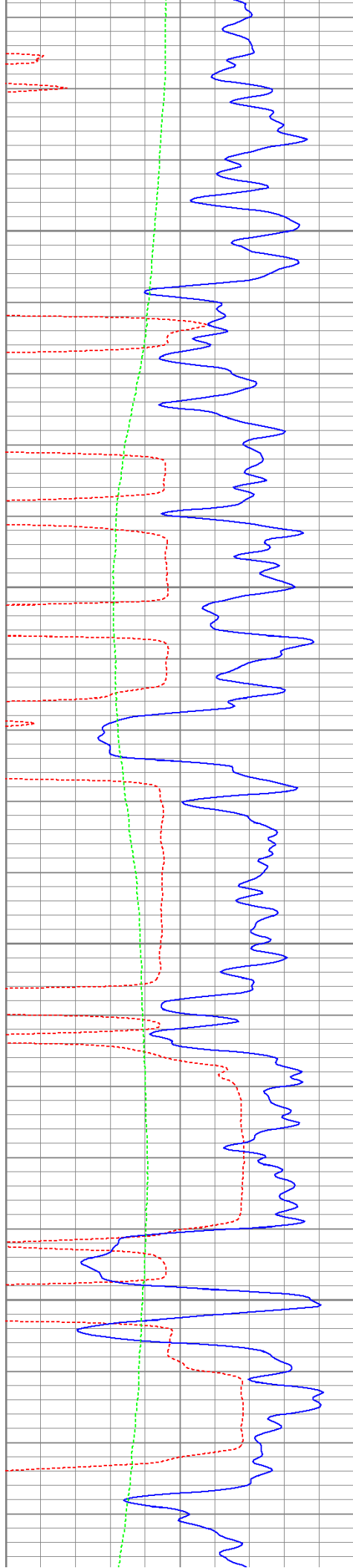










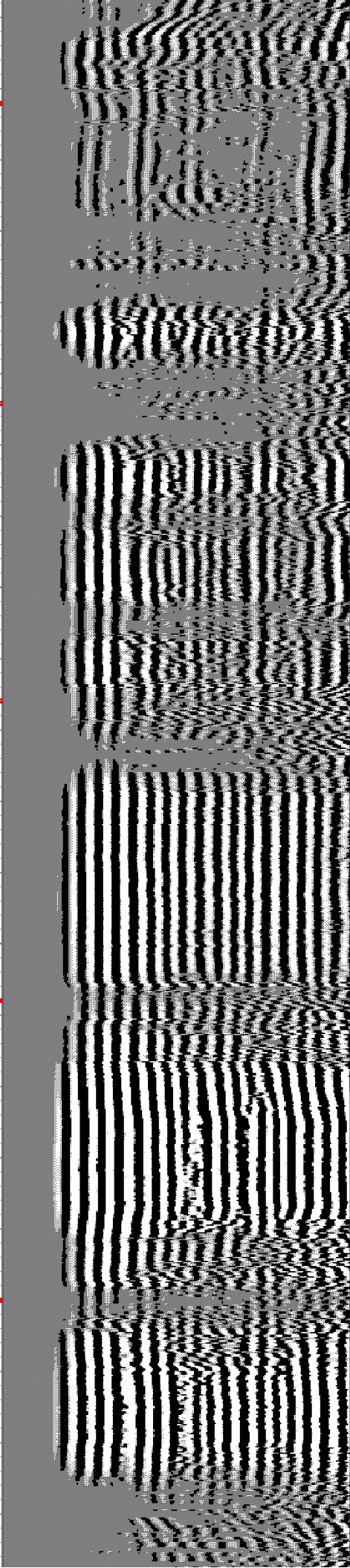
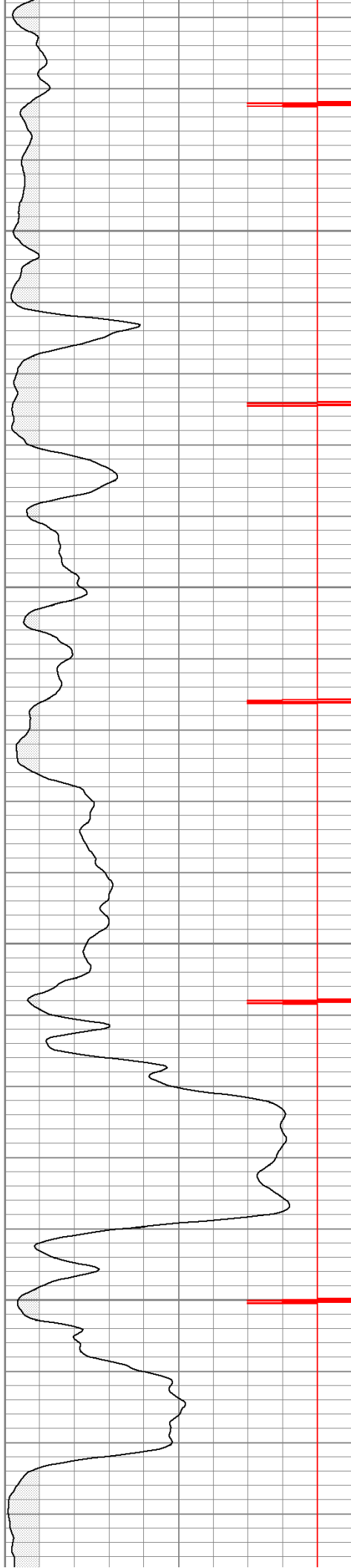


650

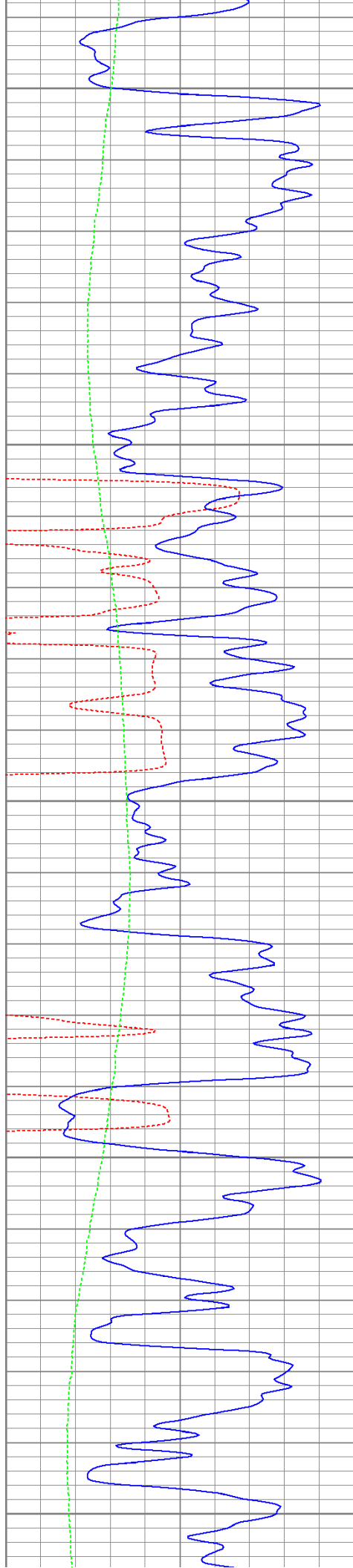
700

750

800







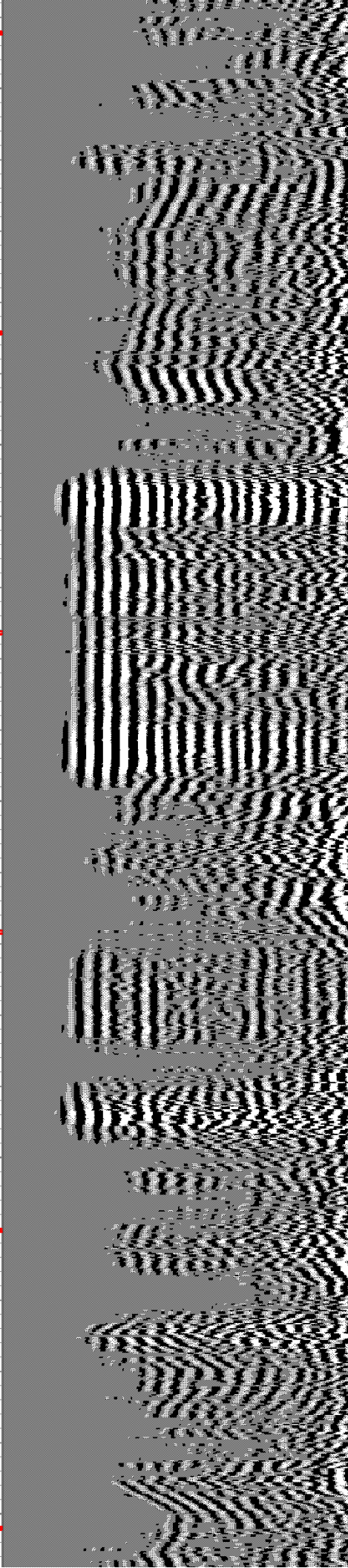
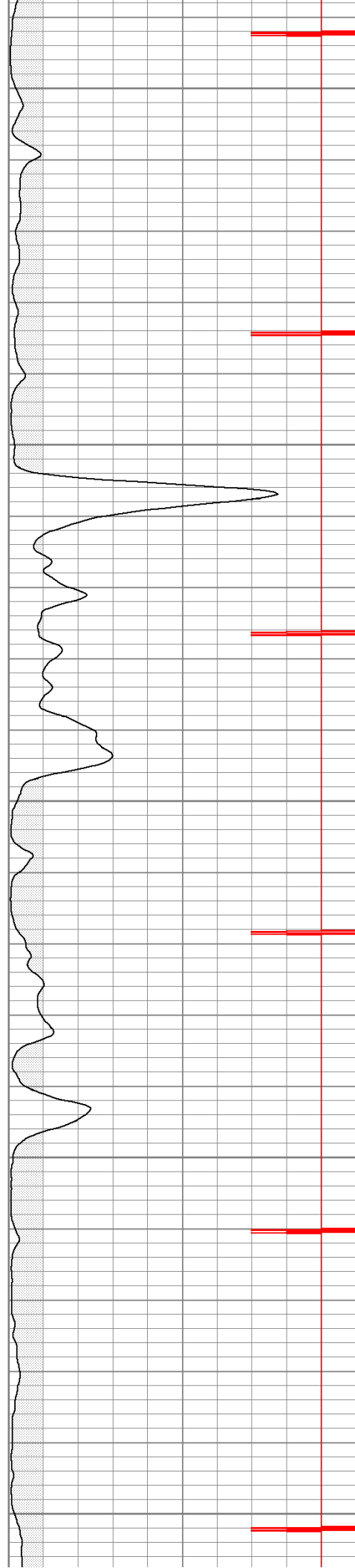
850

900

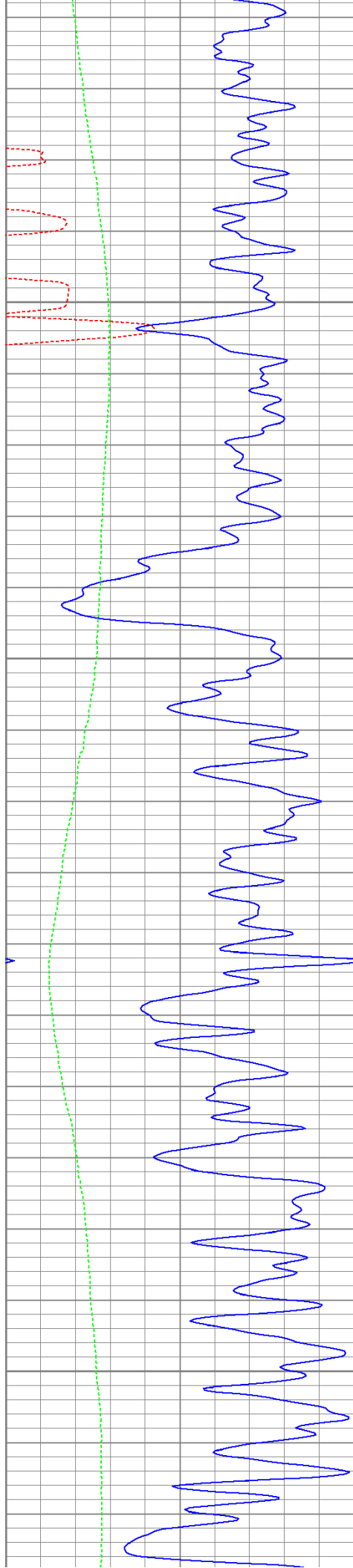
950

1000

1050





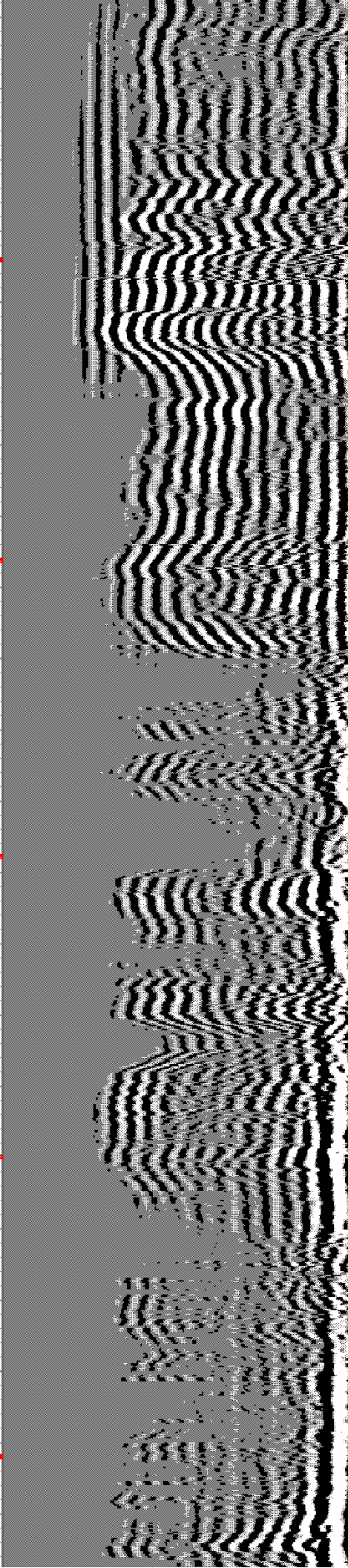
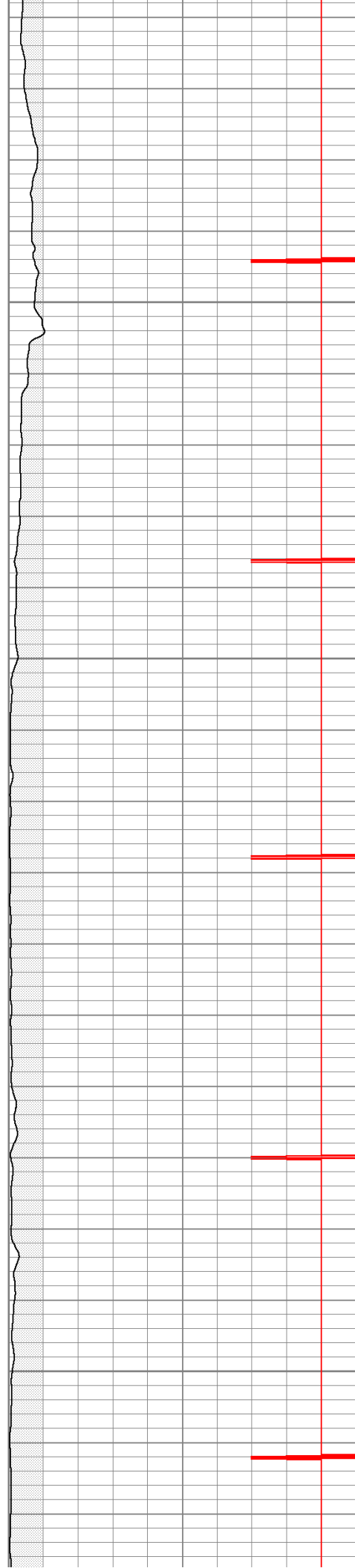


1100

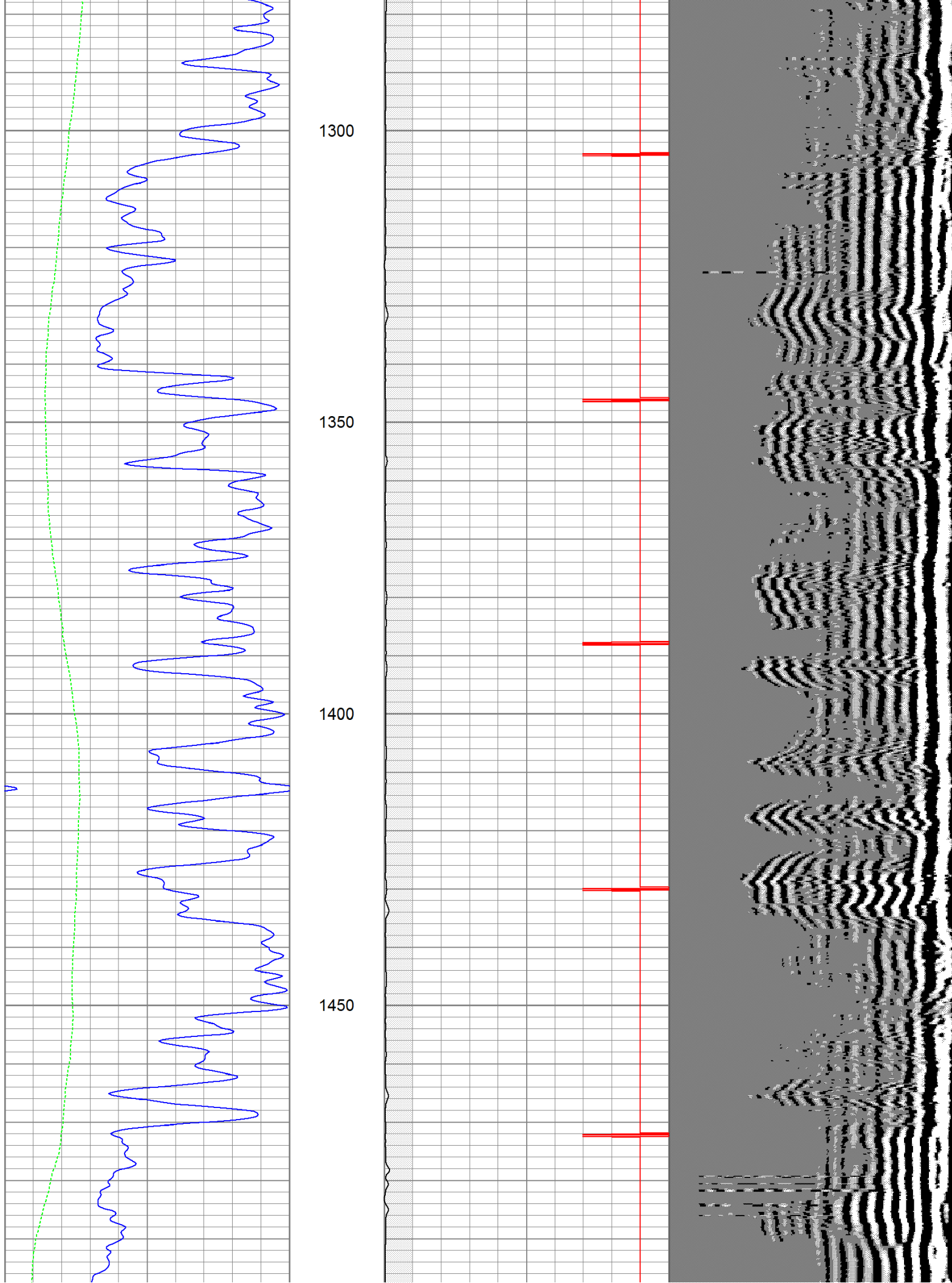
1150

1200

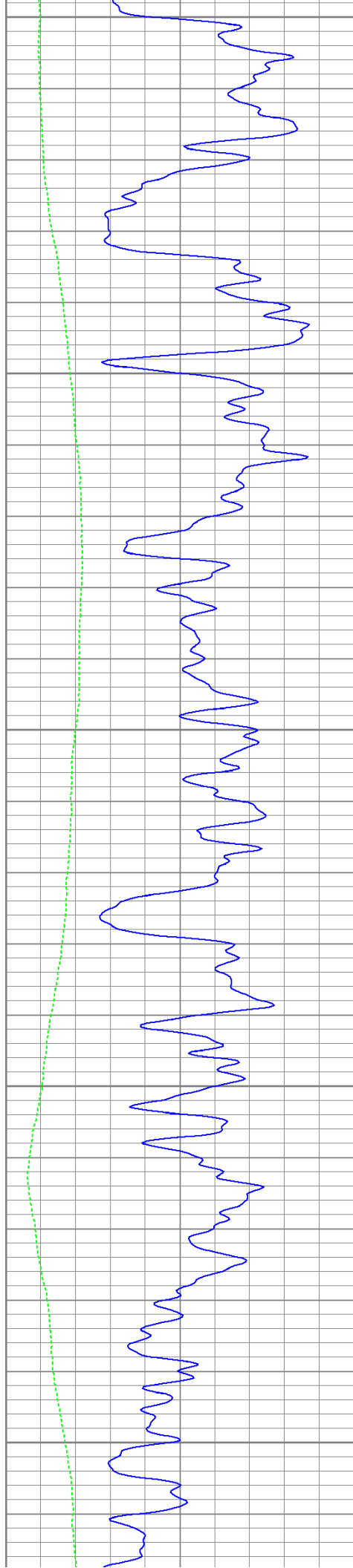
1250











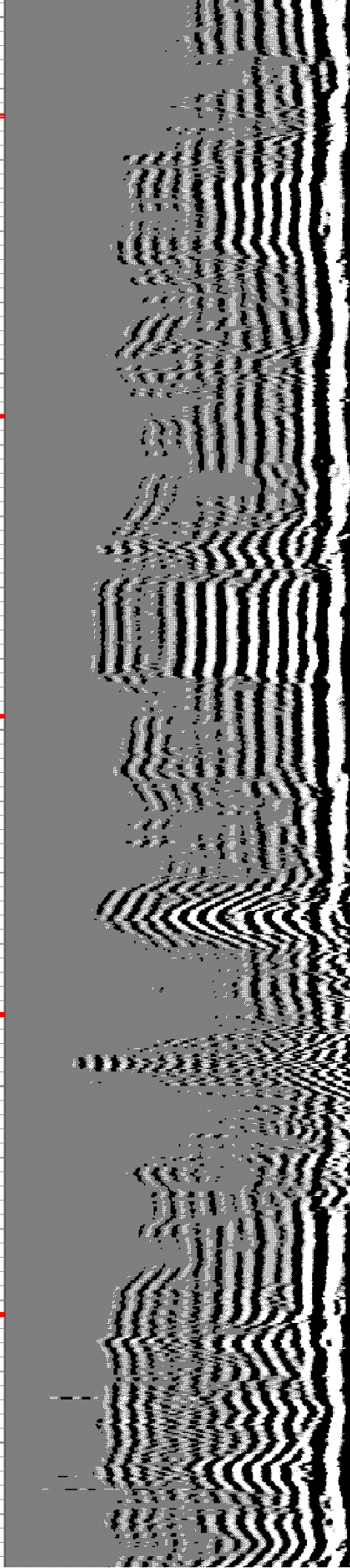
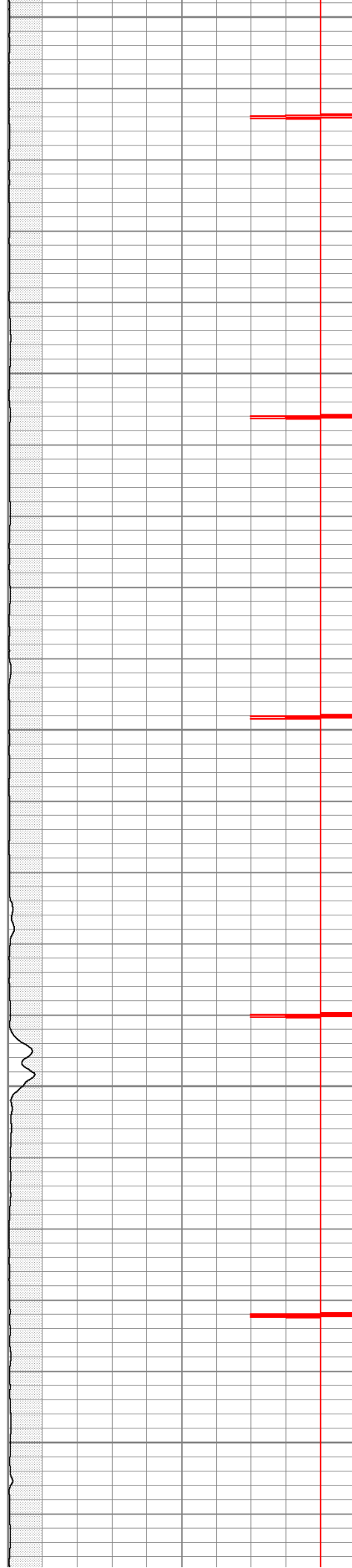
1500

1550

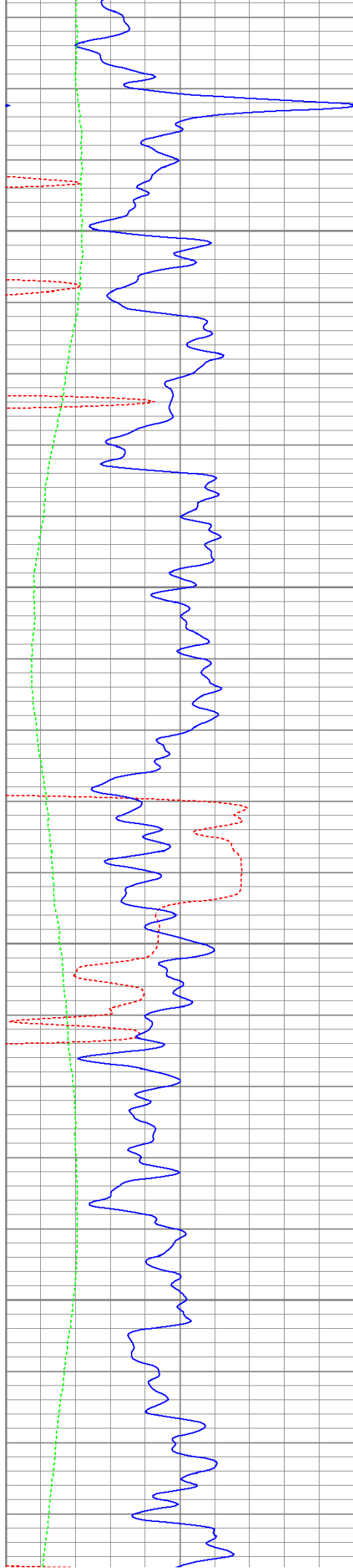
1600

1650

1700







1750

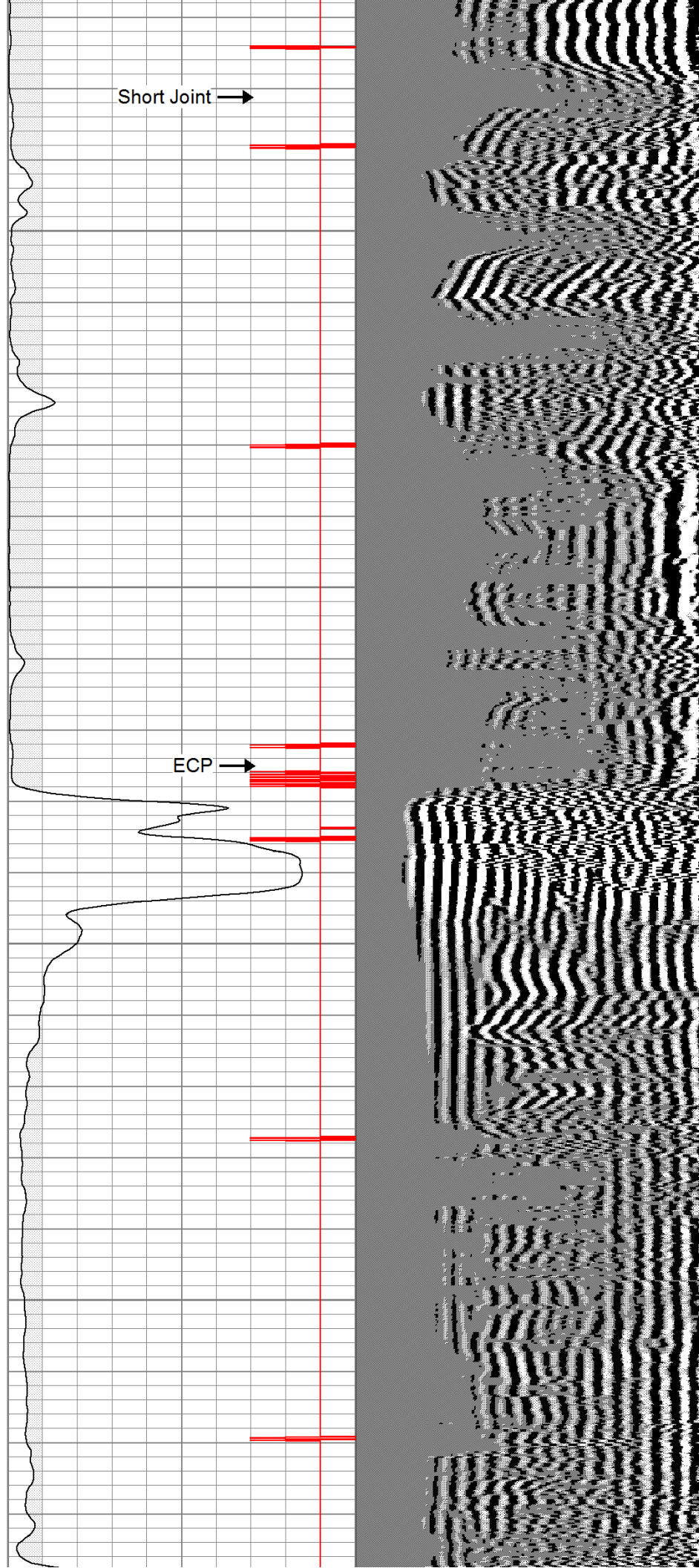
1800

1850

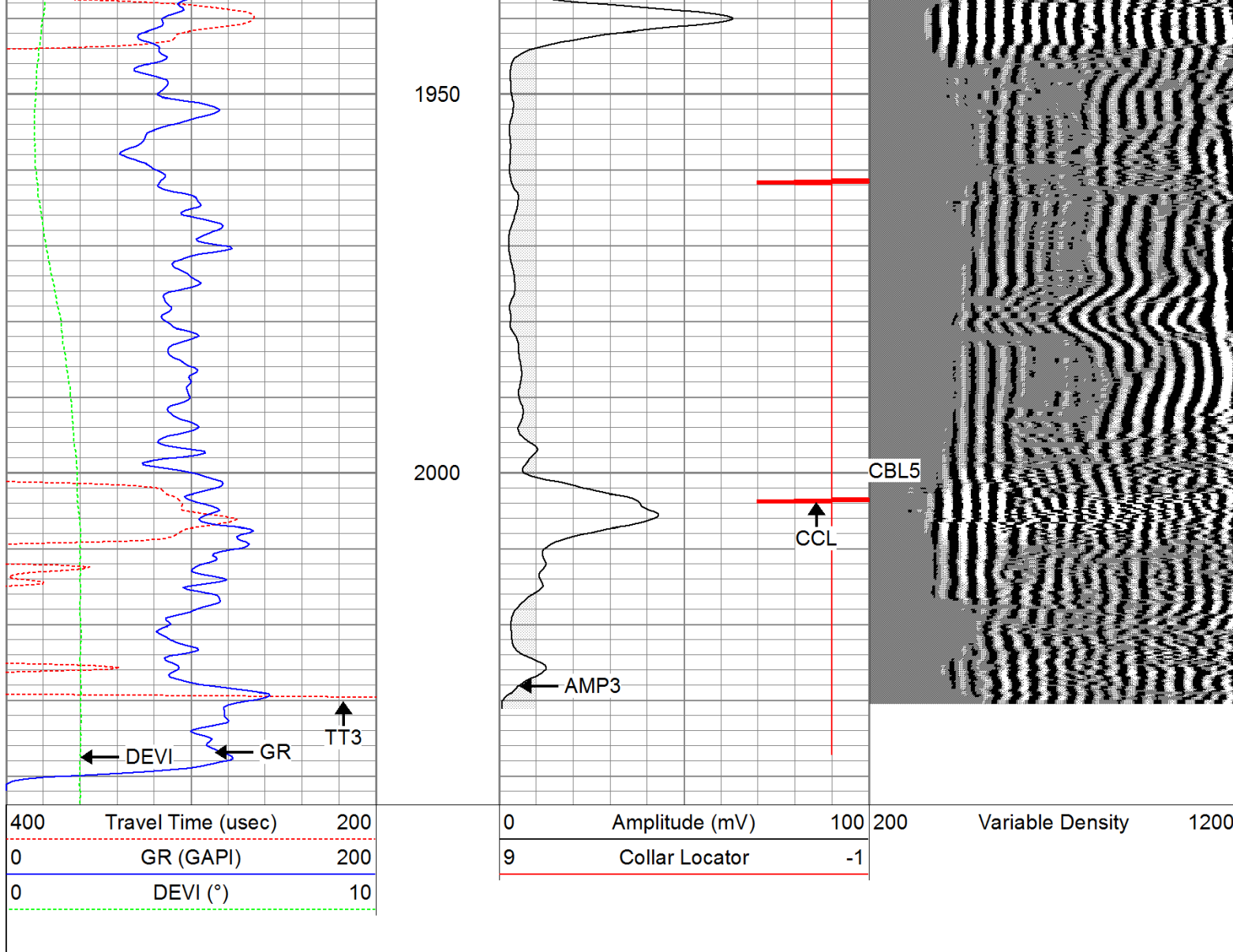
1900

Short Joint →

ECP →



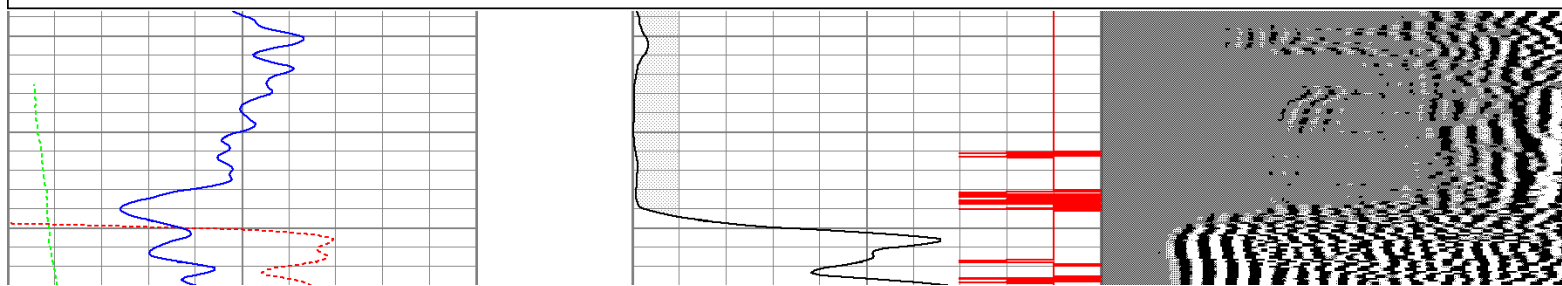


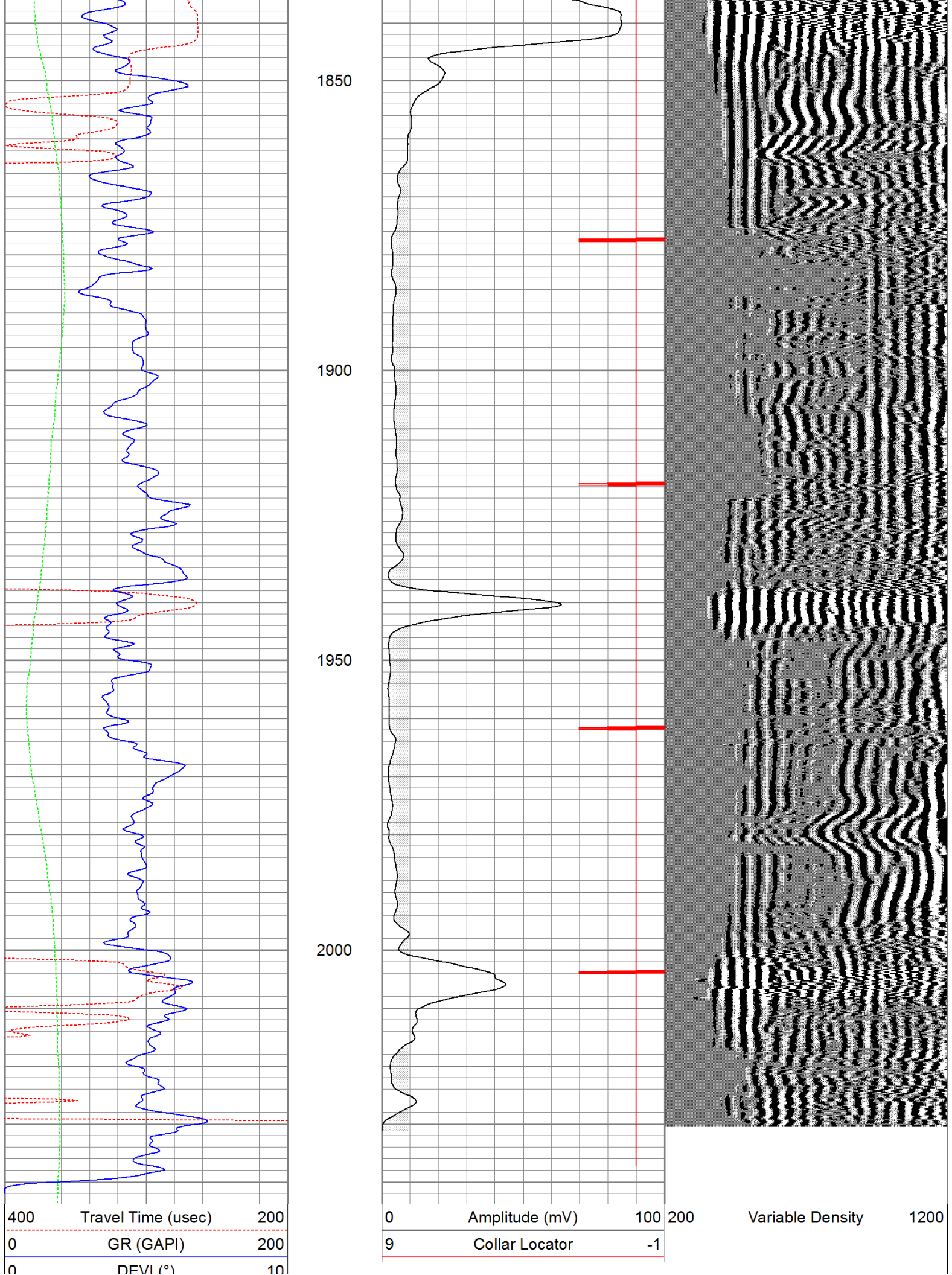


# Repeat Pass

Database File: wildfire61311b.db  
 Dataset Pathname: pass1.1  
 Presentation Format: cbldig  
 Dataset Creation: Mon Jun 13 09:02:43 2011 by Calc Open-Cased 110302  
 Charted by: Depth in Feet scaled 1:240

400	Travel Time (usec)	200	0	Amplitude (mV)	100	200	Variable Density	1200
0	GR (GAPI)	200	9	Collar Locator	-1			
0	DEVI (°)	10						







## Calibration Report

Database File: wildfire61311b.db  
 Dataset Pathname: pass1  
 Dataset Creation: Mon Jun 13 08:01:15 2011 by Log Open-Cased 110302

### Gamma Ray Calibration Report

Serial Number: 080616  
 Tool Model: 275D\_INC  
 Performed: Wed May 04 17:31:09 2011

Calibrator Value: 200.0 GAPI

Background Reading: 50.0 cps  
 Calibrator Reading: 250.0 cps

Sensitivity: 1.0000 GAPI/cps

### Inclinometer Calibration Report

Performed: Wed May 04 17:39:54 2011


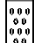

	Low Read.	High Read.	Low Ref.	High Ref.	
X Accelerometer	-3585.20	3595.40	-1.00	1.00	gee
Y Accelerometer	-3619.40	3520.00	-1.00	1.00	gee
Z Accelerometer					

### Cement Bond Log Calibration Report

Serial Number: 081024  
 Tool Model: PROBEDIITALCBL  
 Performed: Thu Jun 02 14:11:23 2011

Depth: 45.379 ft  
 Casing Diameter: 5.5 in

	3' Spacing	5' Spacing	
Signal Zero:	0	0	mV
Calibrated Amplitude:	85	85	mV
Reading at Signal Zero:	-0.0075	-0.00627441	V
Reading in Free Pipe:	1.612	1.23376	V
Gain:	52.4853	68.5462	
Offset:	0.39364	0.430087	

Sensor	Offset (ft)	Schematic	Description	Len (ft)	OD (in)	Wt (lb)
			None	0.75	1.50	5.00
WVF3	14.54		CBL-PROBEDIITALCBL (081024)	8.75	2.75	106.50
WVF5	13.54		PROBE DIGITAL CBL			

[illegible]