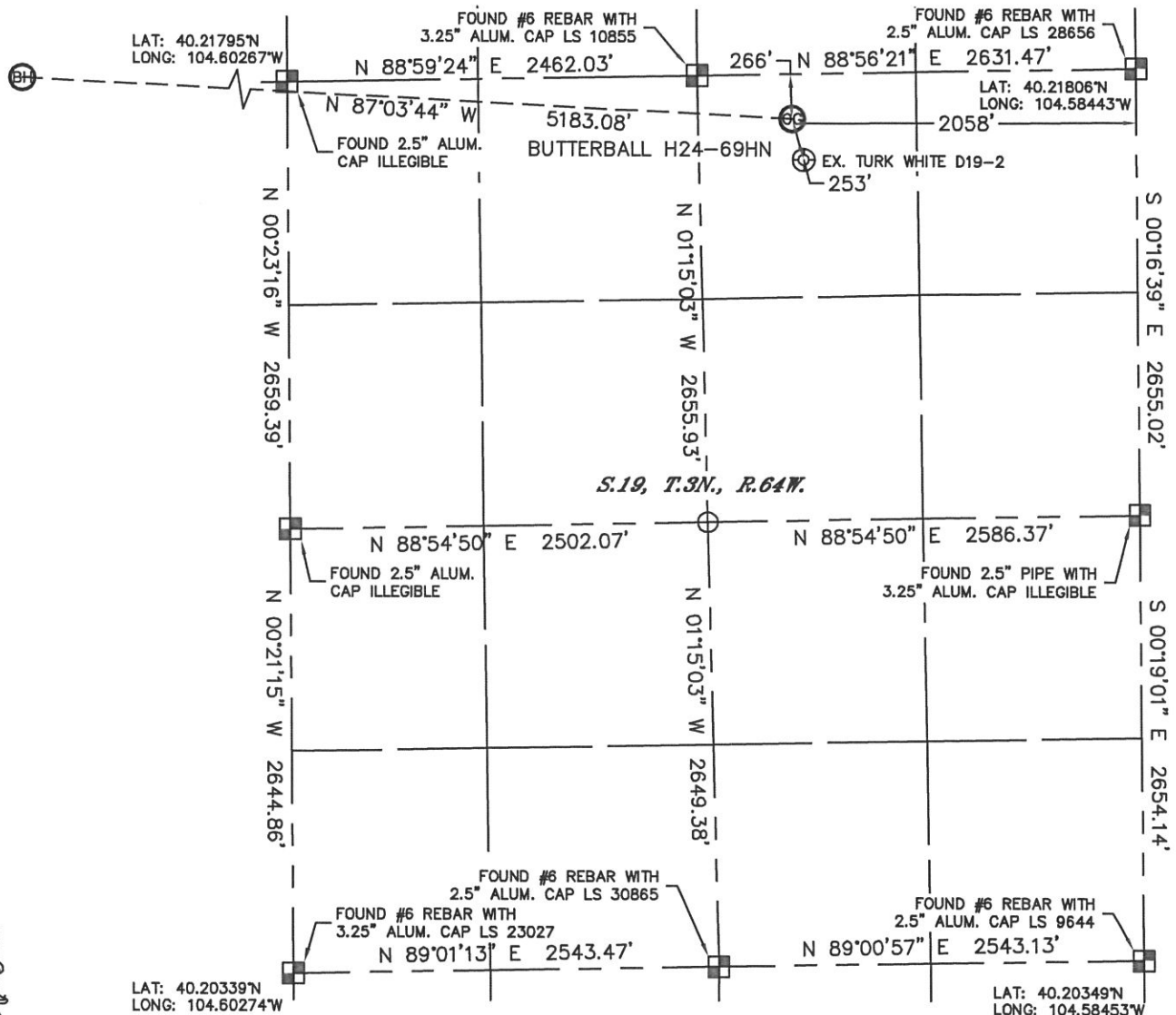


Lat40°, LLC 1635 Foxtrail Drive, Suite 325 Loveland, CO 80538

WELL LOCATION CERTIFICATE

SECTION: 19
TOWNSHIP: 3N
RANGE: 64W

THIS MAP DOES NOT REPRESENT A BOUNDARY SURVEY



In accordance with a request from ERIK VAN DECAR with Noble Energy Inc.

Lat40°, LLC has determined the surface location of the BUTTERBALL H24-69HN to be 266' from the NORTH line and 2058' from the EAST line as measured at right angles from the section lines of Section 19, Township 3 North, Range 64 West and the bottom hole to be 75' from the SOUTH line and 2140' from the EAST line as measured at right angles from the section lines of Section 13, Township 3 North, Range 65 West of the Sixth Principal Meridian, County of Weld, State of Colorado.

I hereby state that this Well Location Certificate was prepared by me, or under my direct supervision, that the fieldwork was completed on 11-15-10, for and on behalf of Noble Energy Inc. That this is not a Land Survey Plat or an Improvement Survey Plat, and that it is not to be relied upon for establishment of fence, building, or other future Improvement lines.

NOTE:

- 1) Bearings shown are Grid Bearings of the Colorado State Plane Coordinate System, North Zone, North American Datum 1983/2007. The lineal dimensions as contained herein are based upon the "U.S. Survey Foot."
- 2) Ground elevations are based on an observed GPS elevation (NAVD 1988 DATUM).
- 3) NEAREST EXISTING WELL: TURK WHITE D19-2 253'
- 4) IMPROVEMENTS: See LOCATION DRAWING for all visible Improvements within 400' of disturbed area.
- 5) SURFACE USE: RANGELAND
- 6) INSTRUMENT OPERATOR: BRIAN BRINKMAN

SURFACE LOCATION

LATITUDE: 40.21728°N
LONGITUDE: 104.59181°W
PDOP: 2.7
ELEV: 4774
1/4, 1/4: NW1/4, NE1/4
NEAREST PROPERTY LINE: 266' NORTH

BOTTOM HOLE

LATITUDE: 40.21815°N
LONGITUDE: 104.61033°W

NOTE

According to Colorado law, you must commence any legal action based upon any defect in this W.L.C. within three years after you discover such defect. In no event, may any action based upon any defect in this survey be commenced more than ten years after the date of the certificate shown hereon. (13-80-105 C.R.S.)

LEGEND

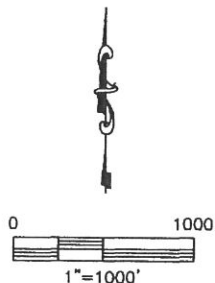
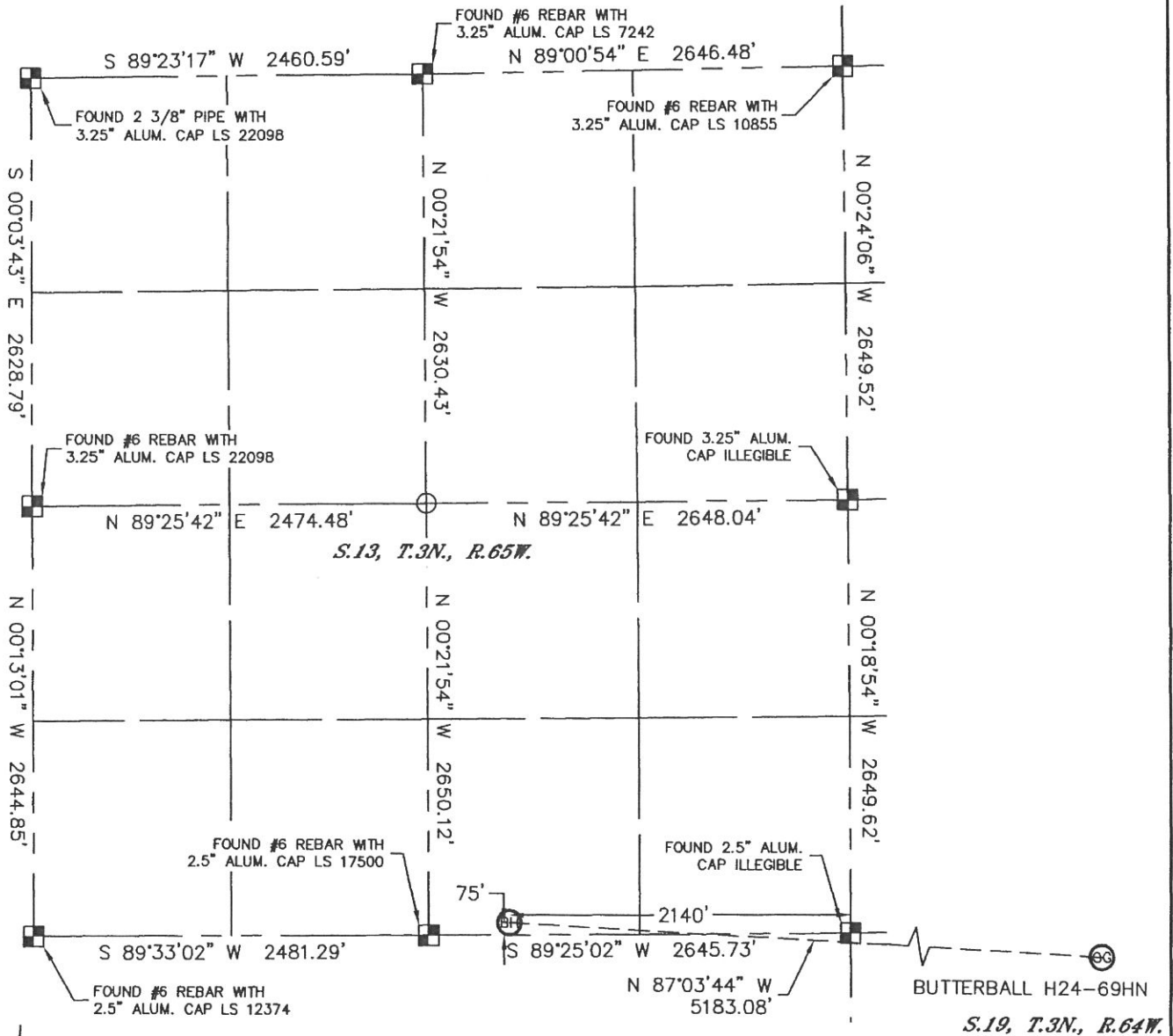
- = ALIQUOT MONUMENT AS DESCRIBED
- = CALCULATED POSITION

PROJECT#: 2010139

WELL LOCATION CERTIFICATE

THIS MAP DOES NOT REPRESENT A BOUNDARY SURVEY

SECTION: 19
TOWNSHIP: 3N
RANGE: 64W



NOTE

According to Colorado law, you must commence any legal action based upon any defect in this W.L.C. within three years after you discover such defect. In no event, may any action based upon any defect in this survey be commenced more than ten years after the date of the certificate shown hereon. (13-80-105 C.R.S.)

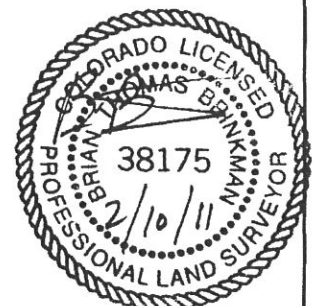
LEGEND

- = ALIQUOT MONUMENT AS DESCRIBED
- = CALCULATED POSITION

SHEET 2 of 2

Brian T. Brinkman—On behalf of Lat40°, LLC
Colorado Licensed Professional
Land Surveyor No. 38175

PROJECT#: 2010139



Lat40°, LLC

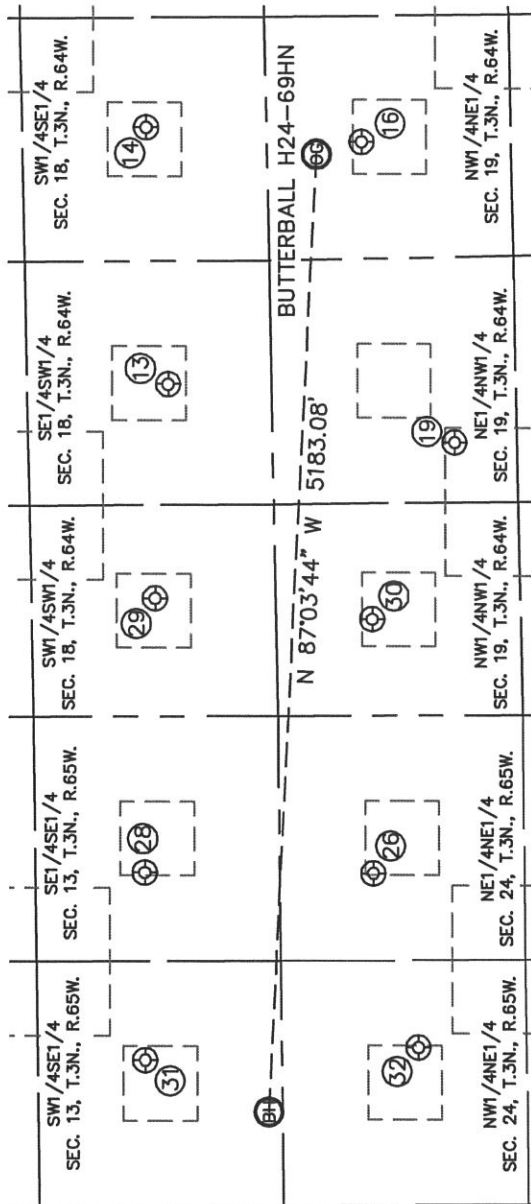
1635 Foxtrail Drive, Suite 325

Loveland, CO 80538

SITE SKETCH

BUTTERBALL H24-69HN

SECTION: 19
TOWNSHIP: 3N
RANGE: 64W



13 MICK D18-14
SE1/4SW1/4
562' FSL
1797' FWL
LAT-40.21953N
LONG-104.59623W
PDOP: 1.9
ELEV: 4794

14 SCOOTER D18-15
SW1/4SE1/4
655' FSL
1909' FEL
LAT-40.21981N
LONG-104.59126W
PDOP: 1.3
ELEV: 4779

15 TURK WHITE D19-2
NW1/4NE1/4
512' FNL
1991' FEL
LAT-40.21661N
LONG-104.59157W
PDOP: 2.0
ELEV: 4772

16 TURK BLUE D19-2J
NE1/4NW1/4
988' FNL
1476' FWL
LAT-40.21527N
LONG-104.59740W
PDOP: 1.8
ELEV: 4789

17 HSR TAURIG 1-24
NE1/4NE1/4
507' FNL
853' FEL
LAT-40.21656N
LONG-104.60573W
PDOP: 1.7
ELEV: 4817

18 UPRC 13-16J
SE1/4SE1/4
732' FSL
843' FEL
LAT-40.21996N
LONG-104.60568W
PDOP: 1.4
ELEV: 4825

19 MICK D18-13
SW1/4SW1/4
655' FSL
639' FWL
LAT-40.21976N
LONG-104.60037W
PDOP: 2.0
ELEV: 4802

20 TURK BLUE D19-4
NW1/4NW1/4
520' FNL
523' FWL
LAT-40.21653N
LONG-104.60080W
PDOP: 2.1
ELEV: 4808

21 UPRC 13-15J
SW1/4SE1/4
742' FSL
1856' FEL
LAT-40.21998N
LONG-104.60931W
PDOP: 1.3
ELEV: 4836

22 HSR-SARCHET 2-24
NW1/4NE1/4
740' FNL
1795' FEL
LAT-40.21592N
LONG-104.60910W
PDOP: 1.2
ELEV: 4822

