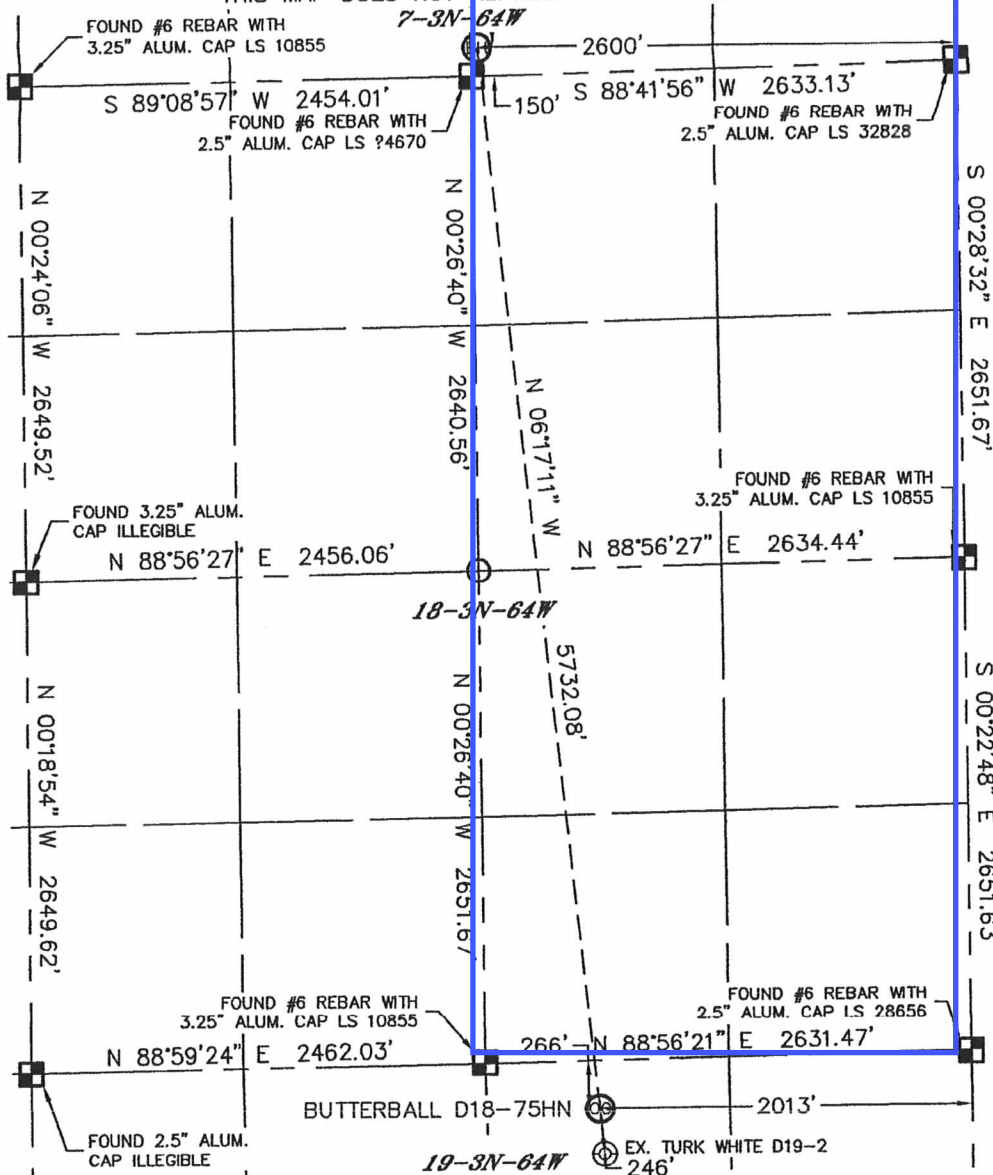


WELL LOCATION CERTIFICATE

SECTION: 19
TOWNSHIP: 3N
RANGE: 64W

THIS MAP DOES NOT REPRESENT A BOUNDARY SURVEY

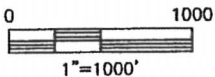


In accordance with a request from ERIK VAN DECAR with Noble Energy Inc. Lat40°, LLC has determined the surface location of the BUTTERBALL D18-75HN to be 266' from the NORTH line and 2013' from the EAST line as measured at right angles from the section lines of Section 19, Township 3 North, Range 64 West and the bottom hole to be 150' from the SOUTH line and 2600' from the EAST line as measured at right angles from the section lines of Section 7, Township 3 North, Range 64 West of the Sixth Principal Meridian, County of Weld, State of Colorado.

I hereby state that this Well Location Certificate was prepared by me, or under my direct supervision, that the fieldwork was completed on 11-15-10, for and on behalf of Noble Energy Inc. That this is not a Land Survey Plat or an Improvement Survey Plat, and that it is not to be relied upon for establishment of fence, building, or other future improvement lines.

SURFACE LOCATION
LATITUDE: 40.21728°N
LONGITUDE: 104.59165°W
PDOP: 2.8
ELEV: 4772
1/4, 1/4: NW1/4NE1/4
NEAREST PROPERTY LINE: 266' NORTH

BOTTOM HOLE
LATITUDE: 40.23294°N
LONGITUDE: 104.59369°W



NOTE:

- 1) Bearings shown are Grid Bearings of the Colorado State Plane Coordinate System, North Zone, North American Datum 1983/2007. The lineal dimensions as contained herein are based upon the "U.S. Survey Foot."
- 2) Ground elevations are based on an observed GPS elevation (NAVD 1988 DATUM).
- 3) NEAREST EXISTING WELL: TURK WHITE D19-2 246'
- 4) IMPROVEMENTS: See LOCATION DRAWING for all visible improvements within 400' of disturbed area.
- 5) SURFACE USE: RANGELAND
- 6) INSTRUMENT OPERATOR: BRIAN BRINKMAN

NOTE

According to Colorado law, you must commence any legal action based upon any defect in this W.L.C. within three years after you discover such defect. In no event, may any action based upon any defect in this survey be commenced more than ten years after the date of the certificate shown hereon. (13-80-105 C.R.S.)

LEGEND

- = ALIQUOT MONUMENT AS DESCRIBED
- = CALCULATED POSITION

SHEET 1 OF 3

Brian T. Brinkman—On behalf of Lat40°, LLC
Colorado Licensed Professional
Land Surveyor No. 38175

PROJECT#: 2010139

