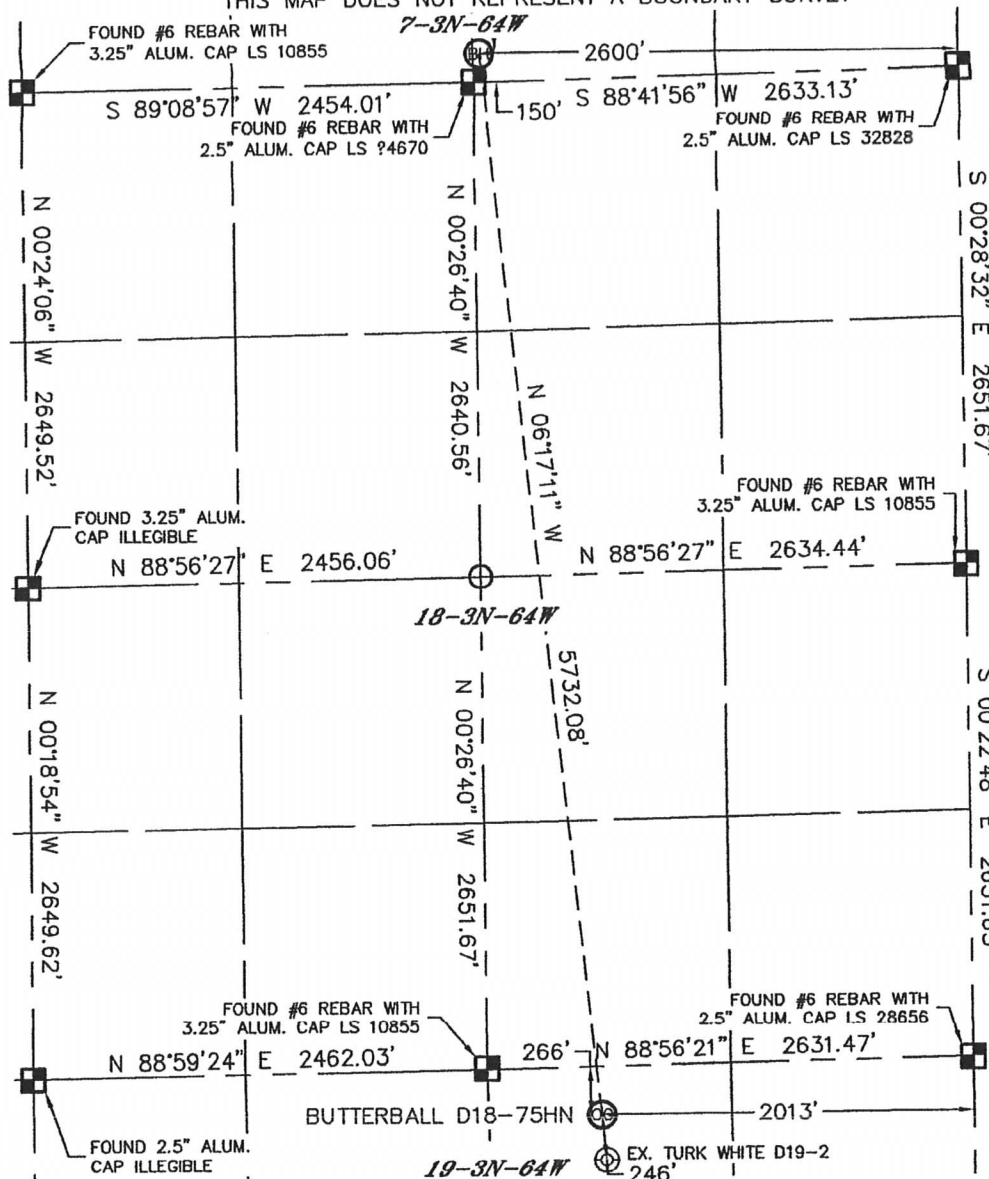


# WELL LOCATION CERTIFICATE

SECTION: 19  
TOWNSHIP: 3N  
RANGE: 64W

THIS MAP DOES NOT REPRESENT A BOUNDARY SURVEY

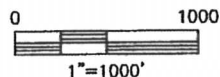


In accordance with a request from ERIK VAN DECAR with Noble Energy Inc. Lat40°, LLC has determined the surface location of the BUTTERBALL D18-75HN to be 266' from the NORTH line and 2013' from the EAST line as measured at right angles from the section lines of Section 19, Township 3 North, Range 64 West and the bottom hole to be 150' from the SOUTH line and 2600' from the EAST line as measured at right angles from the section lines of Section 7, Township 3 North, Range 64 West of the Sixth Principal Meridian, County of Weld, State of Colorado.

I hereby state that this Well Location Certificate was prepared by me, or under my direct supervision, that the fieldwork was completed on 11-15-10, for and on behalf of Noble Energy Inc. That this is not a Land Survey Plat or an Improvement Survey Plat, and that it is not to be relied upon for establishment of fence, building, or other future improvement lines.

SURFACE LOCATION  
LATITUDE: 40.21728°N  
LONGITUDE: 104.59165°W  
PDOP: 2.8  
ELEV: 4772  
1/4,1/4: NW1/4NE1/4  
NEAREST PROPERTY LINE: 266' NORTH

BOTTOM HOLE  
LATITUDE: 40.23294°N  
LONGITUDE: 104.59369°W



NOTE:

- 1) Bearings shown are Grid Bearings of the Colorado State Plane Coordinate System, North Zone, North American Datum 1983/2007. The lineal dimensions as contained herein are based upon the "U.S. Survey Foot."
- 2) Ground elevations are based on an observed GPS elevation (NAVD 1988 DATUM).
- 3) NEAREST EXISTING WELL: TURK WHITE D19-2 246'
- 4) IMPROVEMENTS: See LOCATION DRAWING for all visible improvements within 400' of disturbed area.
- 5) SURFACE USE: RANGELAND
- 6) INSTRUMENT OPERATOR: BRIAN BRINKMAN

## NOTE

According to Colorado law, you must commence any legal action based upon any defect in this W.L.C. within three years after you discover such defect. In no event, may any action based upon any defect in this survey be commenced more than ten years after the date of the certificate shown hereon. (13-80-105 C.R.S.)

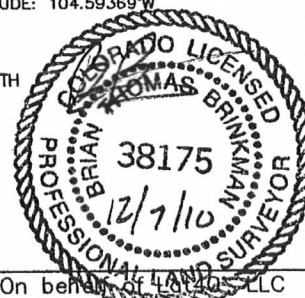
## LEGEND

- = ALIQUOT MONUMENT AS DESCRIBED
- = CALCULATED POSITION

SHEET 1 OF 3

Brian T. Brinkman—On behalf of Lat40°, LLC  
Colorado Licensed Professional  
Land Surveyor No. 38175

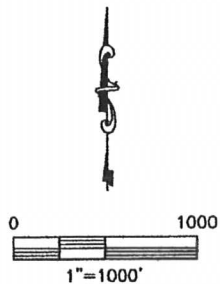
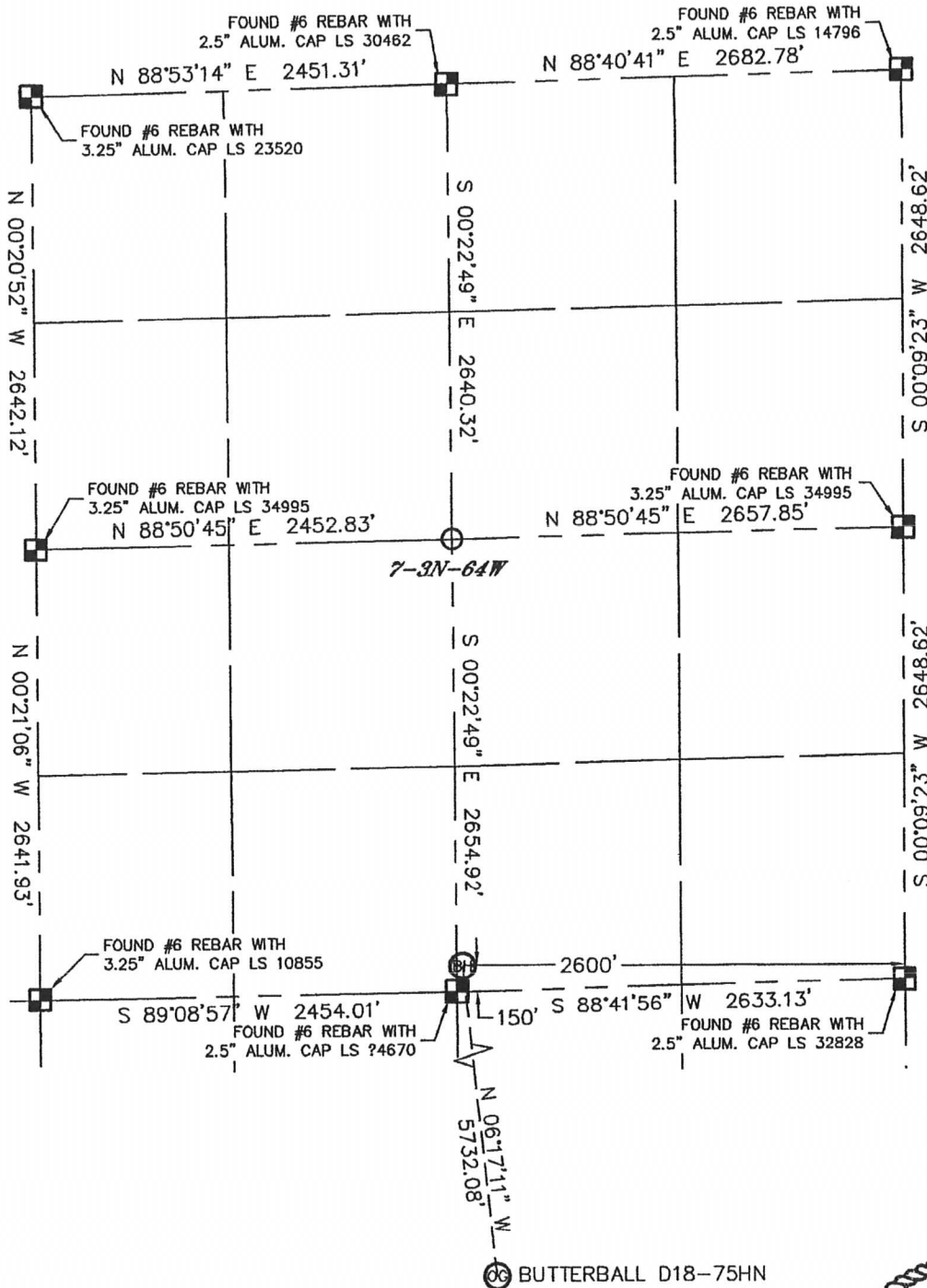
PROJECT#: 2010139



# WELL LOCATION CERTIFICATE

THIS MAP DOES NOT REPRESENT A BOUNDARY SURVEY

SECTION: 19  
TOWNSHIP: 3N  
RANGE: 64W



**NOTE**  
According to Colorado law, you must commence any legal action based upon any defect in this W.L.C. within three years after you discover such defect. In no event, may any action based upon any defect in this survey be commenced more than ten years after the date of the certificate shown hereon. (13-80-105 C.R.S.)

## LEGEND

- = ALIQUOT MONUMENT AS DESCRIBED
- = CALCULATED POSITION

SHEET 2 of 3

Brian T. Brinkman—On behalf of Lat40°, LLC  
Colorado Licensed Professional  
Land Surveyor No. 38175

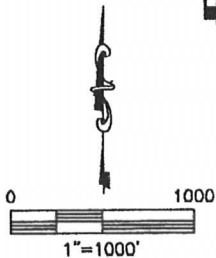
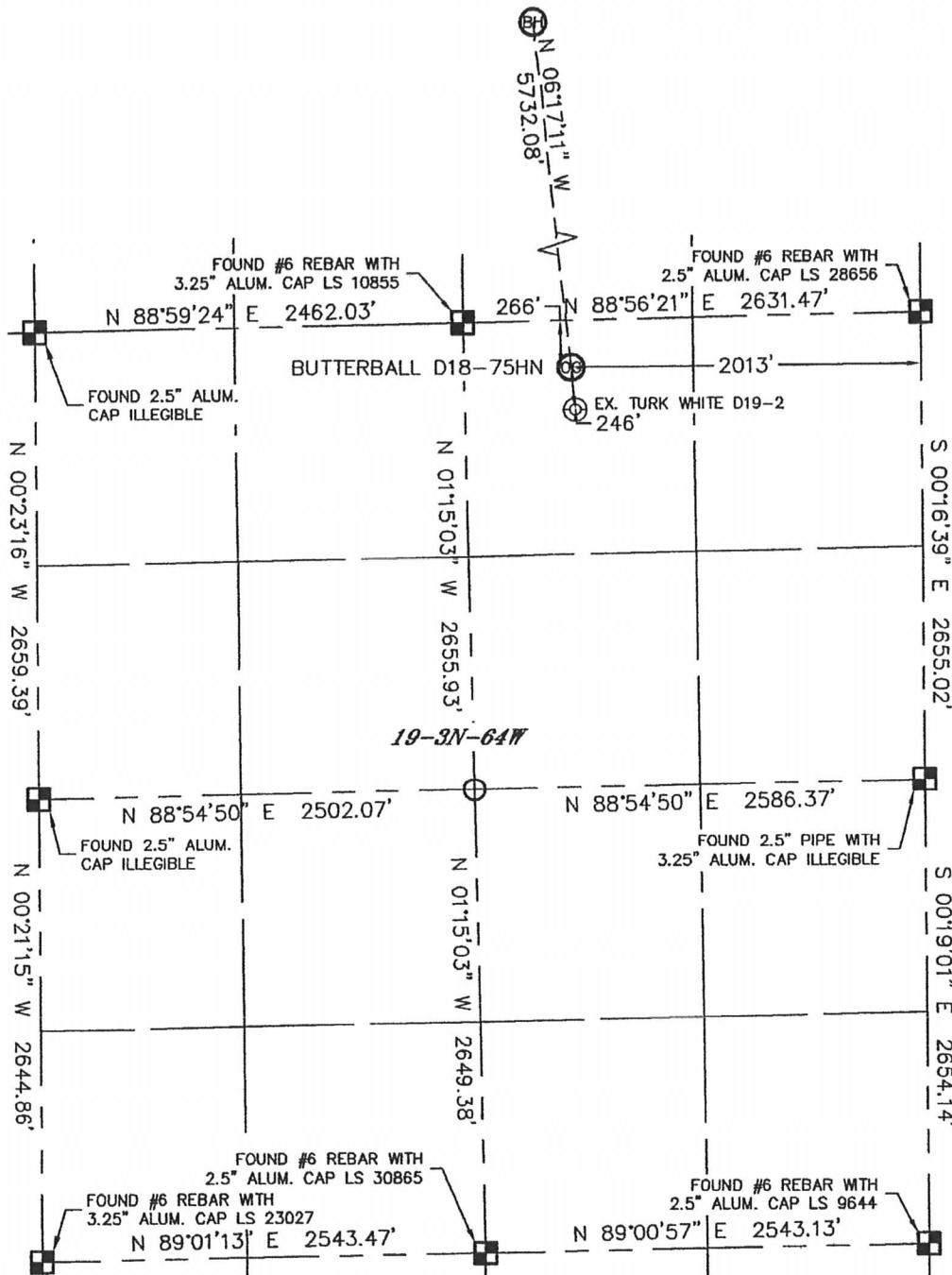
PROJECT#: 2010139



# WELL LOCATION CERTIFICATE

THIS MAP DOES NOT REPRESENT A BOUNDARY SURVEY

SECTION: 19  
TOWNSHIP: 3N  
RANGE: 64W



**NOTE**  
According to Colorado law, you must commence any legal action based upon any defect in this W.L.C. within three years after you discover such defect. In no event, may any action based upon any defect in this survey be commenced more than ten years after the date of the certificate shown hereon. (13-80-105 C.R.S.)

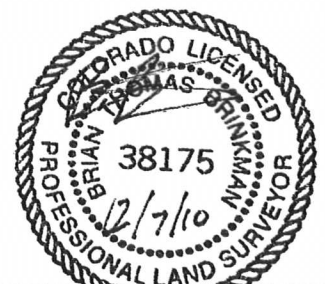
## LEGEND

- = ALIQUOT MONUMENT AS DESCRIBED
- = CALCULATED POSITION

*SHEET 3 of 3*

Brian T. Brinkman—On behalf of Lat40°, LLC  
Colorado Licensed Professional  
Land Surveyor No. 38175

PROJECT#: 2010139



Lat40°, LLC

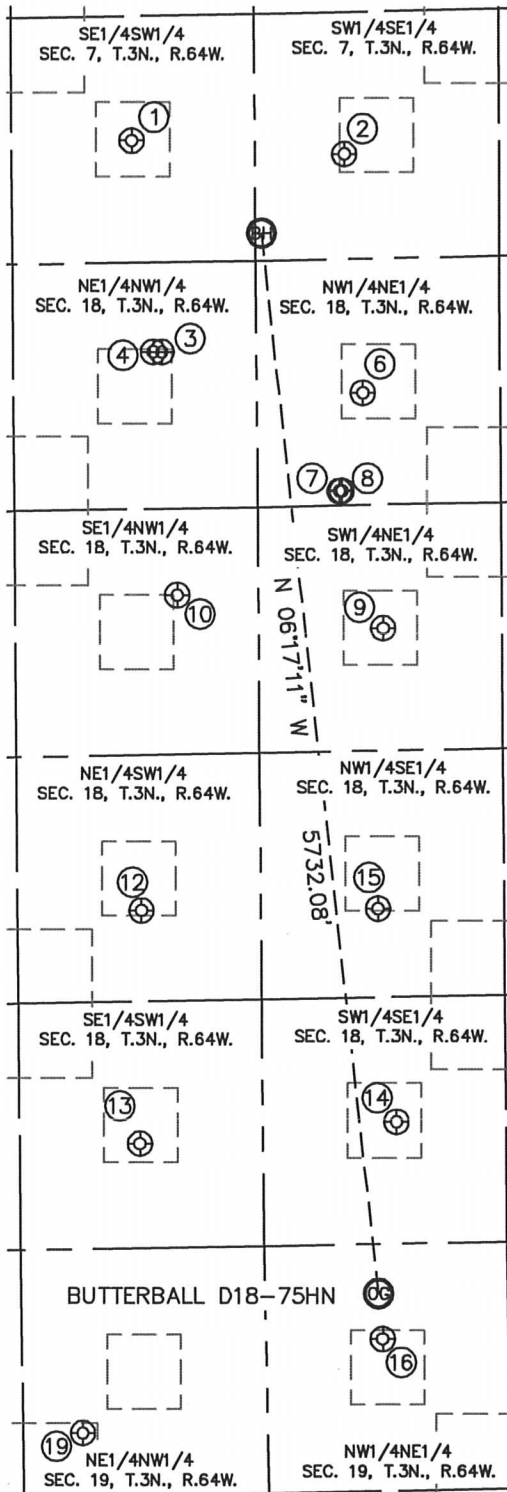
1635 Foxtrail Drive, Suite 325

Loveland, CO 80538

# SITE SKETCH

## BUTTERBALL D18-75HN

SECTION: 19  
TOWNSHIP: 3N  
RANGE: 64W



①  
DECHANT D7-14  
SE1/4SW1/4  
657' FSL  
1789' FWL  
LAT-40.23432°N  
LONG-104.59618°W  
PDOP: 2.3  
ELEV: 4826

②  
DECHANT D7-15  
SW1/4SE1/4  
564' FSL  
2155' FEL  
LAT-40.23409°N  
LONG-104.59207°W  
PDOP: 2.3  
ELEV: 4815

③  
MICK D18-3  
NE1/4NW1/4  
480' FNL  
1897' FWL  
LAT-40.23120°N  
LONG-104.59564°W  
PDOP: 1.5  
ELEV: 4804

④  
SHIANNE D18-29D  
NE1/4NW1/4  
479' FNL  
1944' FWL  
LAT-40.23120°N  
LONG-104.59581°W  
PDOP: 1.5  
ELEV: 4805

⑥  
SCOOTER 18-2  
NW1/4NE1/4  
720' FNL  
2060' FEL  
LAT-40.23057°N  
LONG-104.59176°W  
PDOP: 1.5  
ELEV: 4800

⑦  
SCOOTER D18-17 JI  
NW1/4NE1/4  
1243' FNL  
2191' FEL  
LAT-40.22912°N  
LONG-104.59223°W  
PDOP: 1.5  
ELEV: 4801

⑧  
SCOOTER D18-1 JI  
NW1/4NE1/4  
1242' FNL  
2177' FEL  
LAT-40.22913°N  
LONG-104.59218°W  
PDOP: 1.4  
ELEV: 4801

⑨  
SCOOTER D18-7  
SW1/4NE1/4  
1985' FSL  
1961' FEL  
LAT-40.22710°N  
LONG-104.59141°W  
PDOP: 1.4  
ELEV: 4797

⑩  
MICK D18-06  
SE1/4NW1/4  
1786' FNL  
2018' FWL  
LAT-40.22761°N  
LONG-104.59539°W  
PDOP: 1.3  
ELEV: 4793

⑫  
MICK D18-11  
NE1/4SW1/4  
1811' FSL  
1812' FWL  
LAT-40.22297°N  
LONG-104.59615°W  
PDOP: 1.7  
ELEV: 4789

⑬  
MICK D18-14  
SE1/4SW1/4  
562' FSL  
1797' FWL  
LAT-40.21953°N  
LONG-104.59623°W  
PDOP: 1.9  
ELEV: 4794

⑭  
SCOOTER D18-15  
SW1/4SE1/4  
655' FSL  
1909' FEL  
LAT-40.21981°N  
LONG-104.59126°W  
PDOP: 1.3  
ELEV: 4779

⑮  
SCOOTER D18-10  
NW1/4SE1/4  
1802' FSL  
2000' FEL  
LAT-40.22296°N  
LONG-104.59157°W  
PDOP: 1.3  
ELEV: 4774

⑯  
TURK WHITE D19-2  
NW1/4NE1/4  
512' FNL  
1991' FEL  
LAT-40.21661°N  
LONG-104.59157°W  
PDOP: 2.0  
ELEV: 4772

⑰  
TURK BLUE D19-2J  
NE1/4NW1/4  
988' FNL  
1476' FWL  
LAT-40.21527°N  
LONG-104.59740°W  
PDOP: 1.8  
ELEV: 4789

