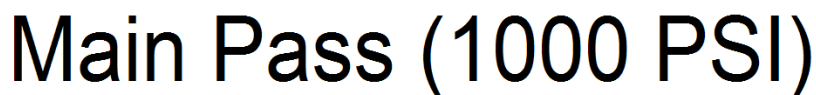


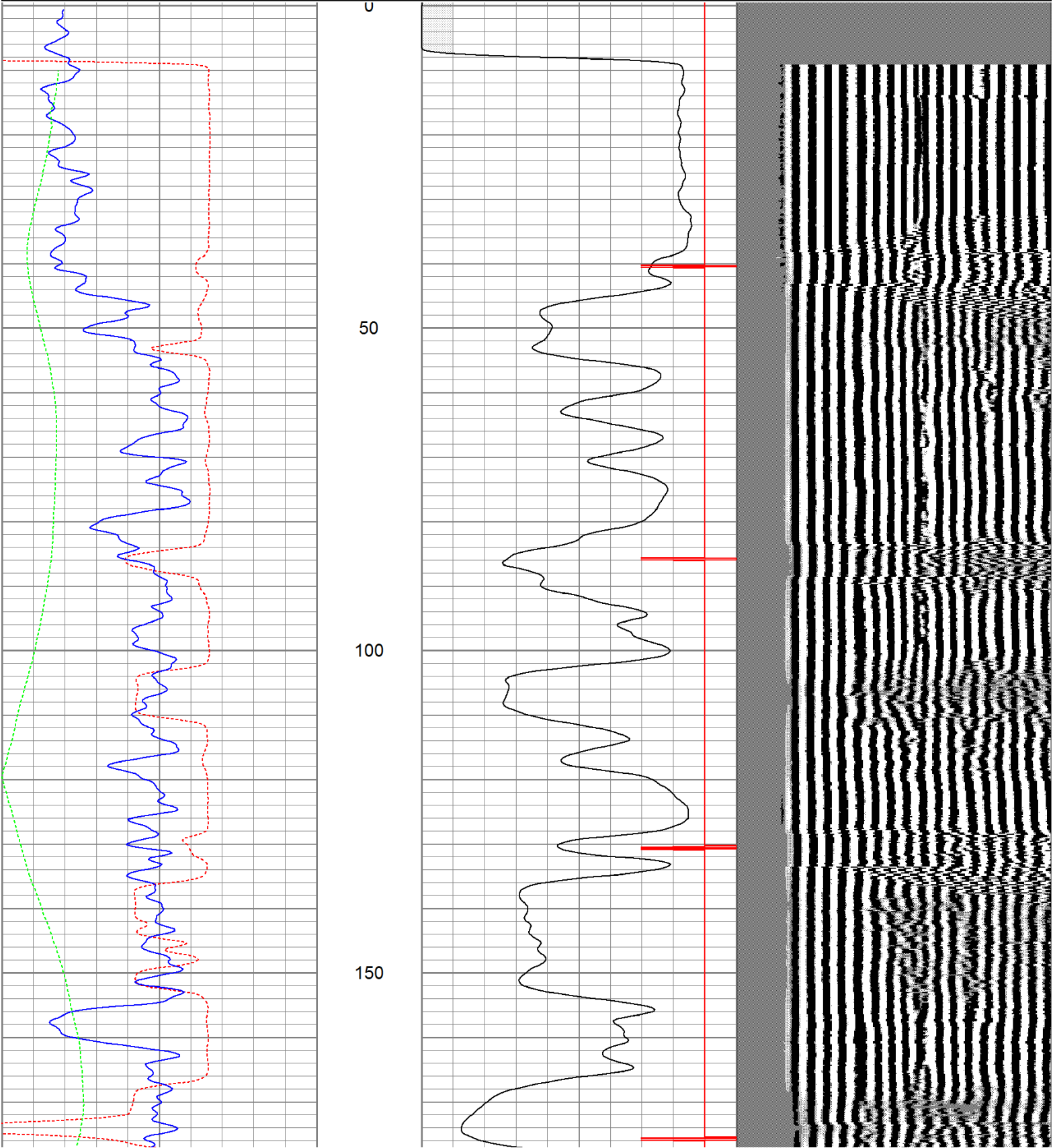


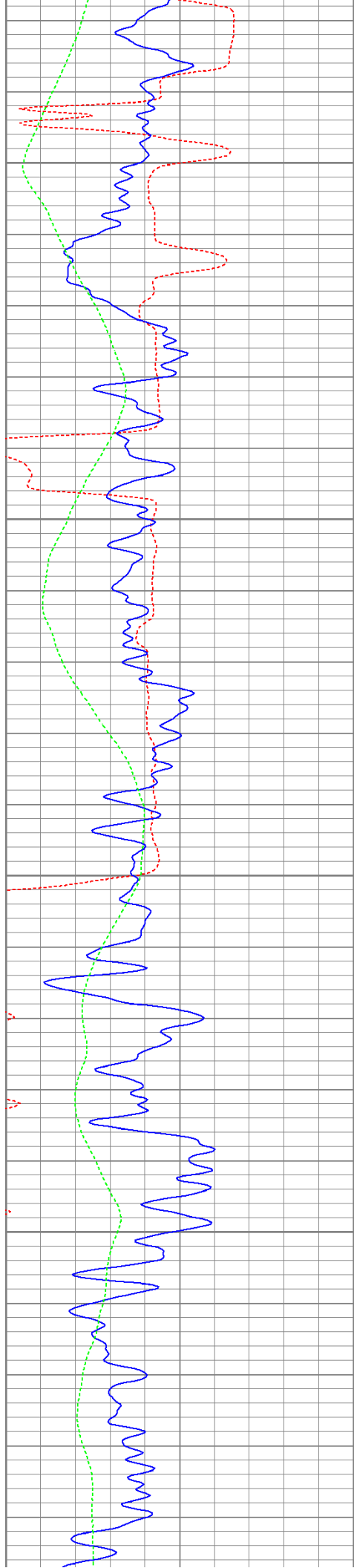
<<< Fold Here >>>
All interpretations are opinions based on inferences from electrical or other measurements and we cannot and do not guarantee the accuracy or correctness of any interpretation, and we shall not, except in the case of gross or willful negligence on our part, be liable or responsible for any loss, costs, damages, or expenses incurred or sustained by anyone resulting from any interpretation made by any of our officers, agents or employees. These interpretations are also subject to our general terms and conditions set out in our current Price Schedule.
Comments
<p>Main Pass logged under 1000 PSI.</p> <p>Directions: 1st Bosque to Alamosito canyon, take 2nd left after compressor station, go to top of hill, at top go right and follow road 2nd drive thru location.</p>



Database File: ac08-0872011b.db
Dataset Pathname: pass2.1
Presentation Format: cbldig
Dataset Creation: Wed Jul 20 09:00:53 2011 by Calc Open-Cased 110302
Charted by: Depth in Feet scaled 1:240

400	Travel Time (usec)	200	0	Amplitude (mV)	100	200	Variable Density	1200
0	GR (GAPI)	200	9	Collar Locator	-1			
0	DEVI (°)	10						



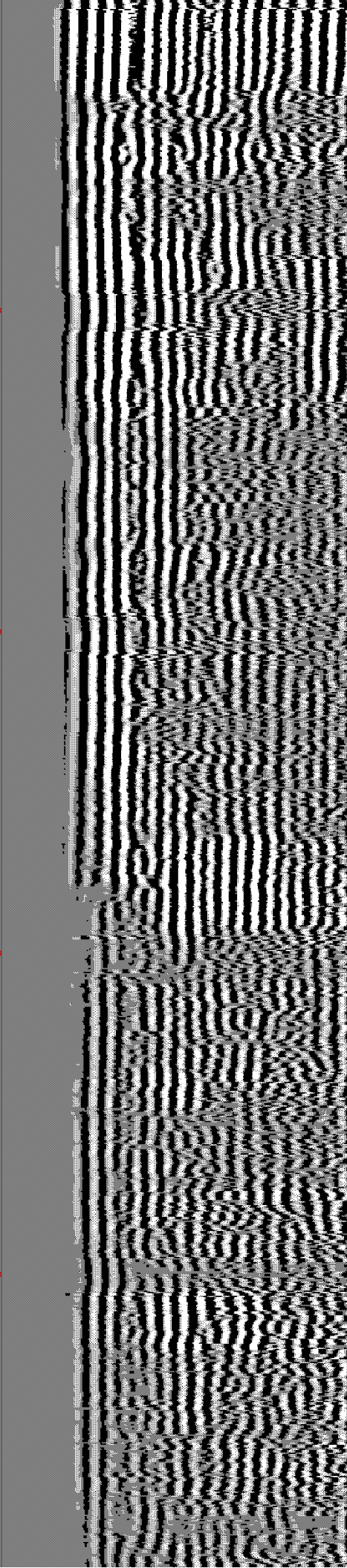
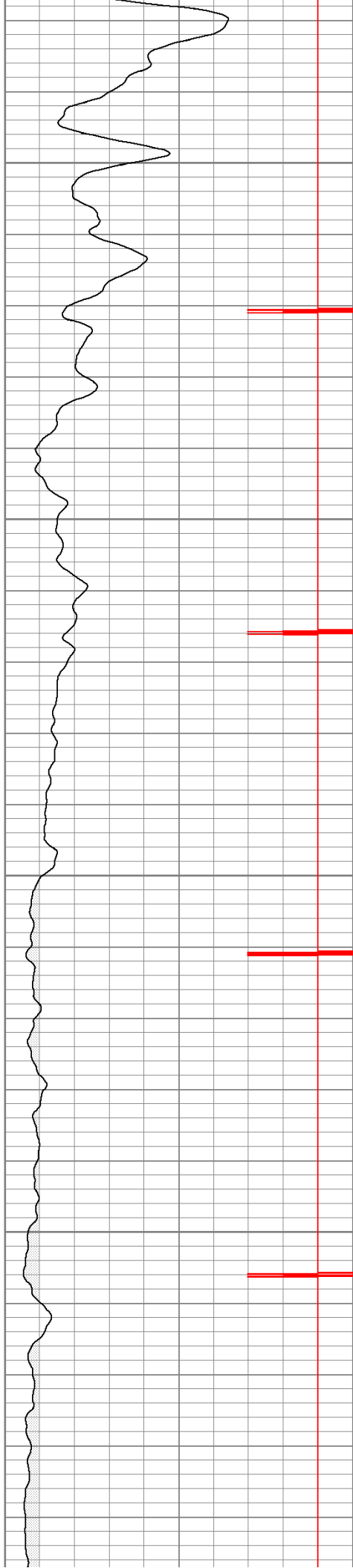


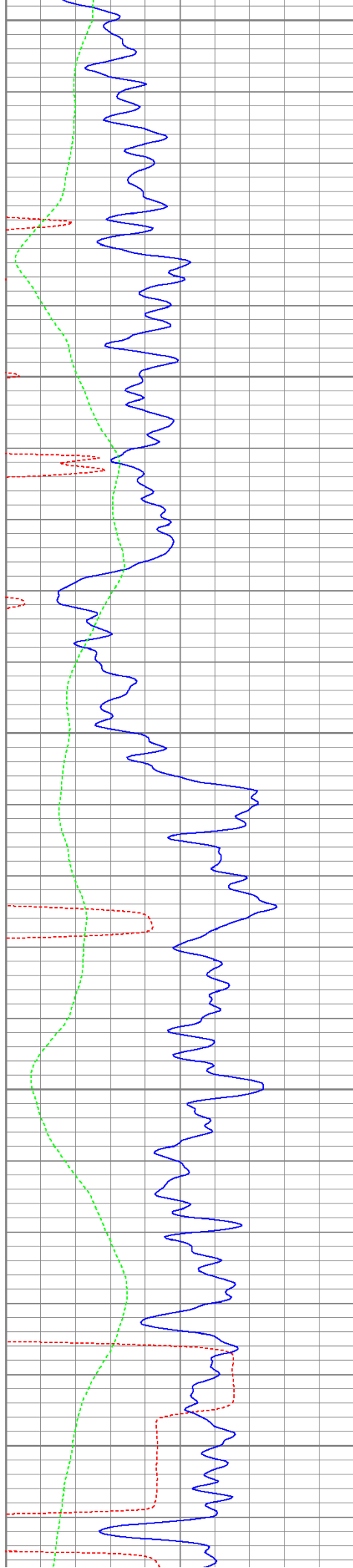
200

250

300

350





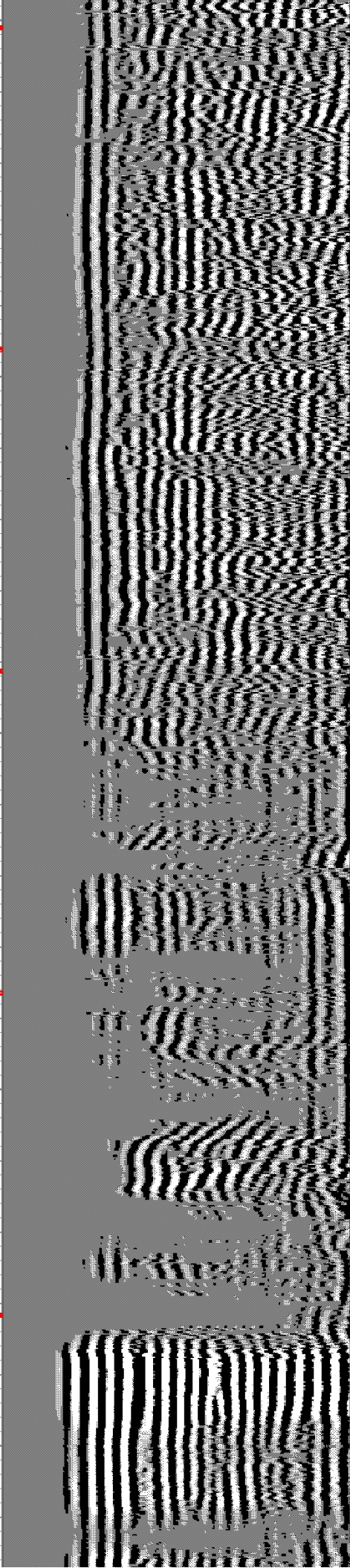
400

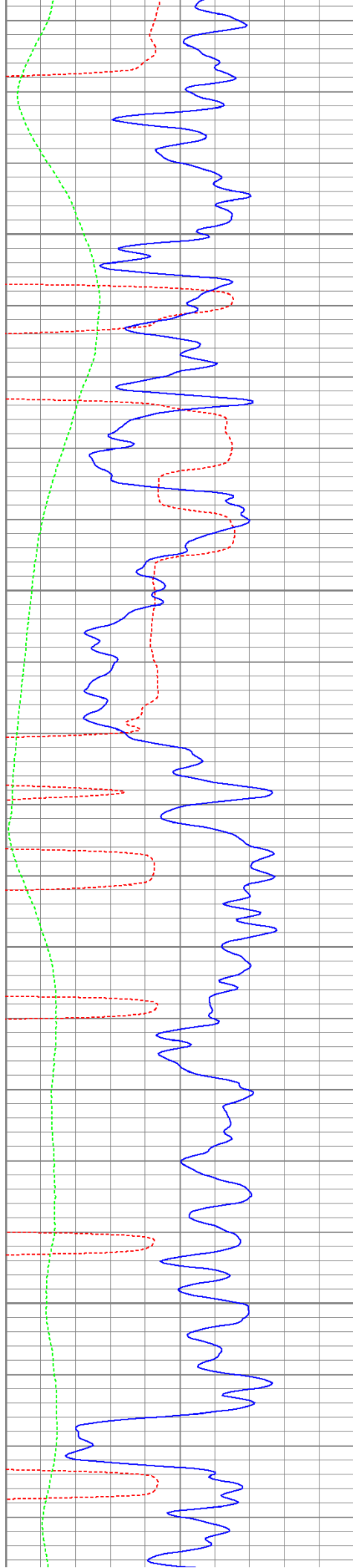
450

500

550

600



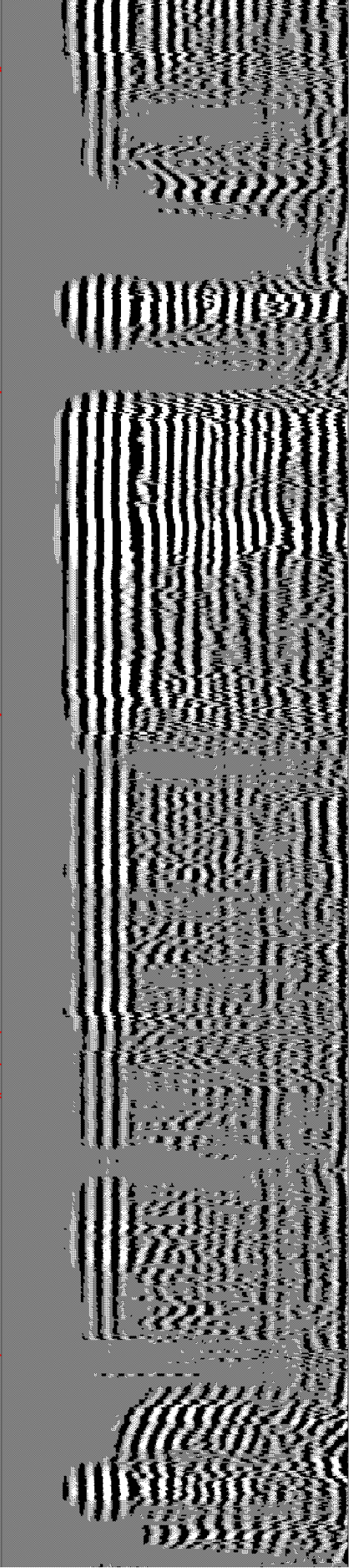
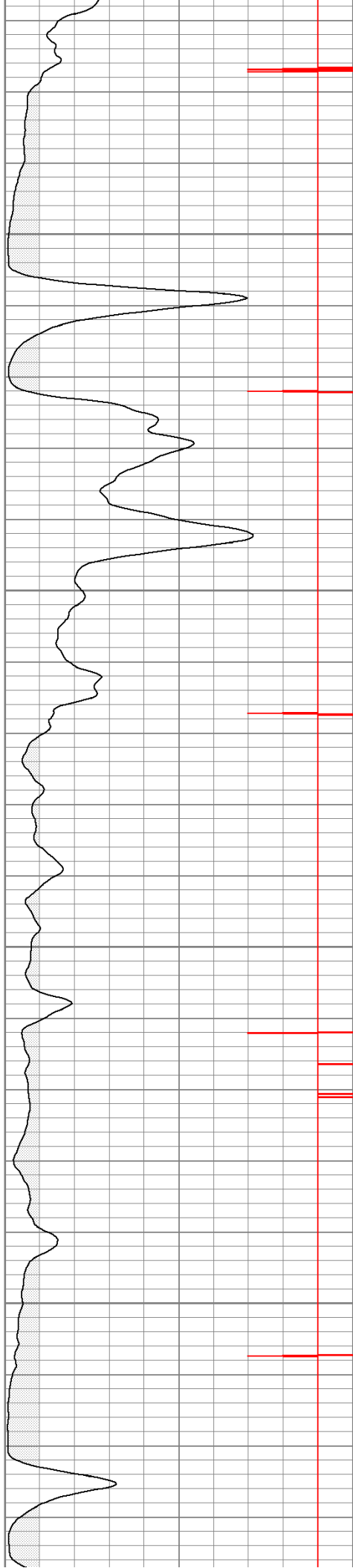


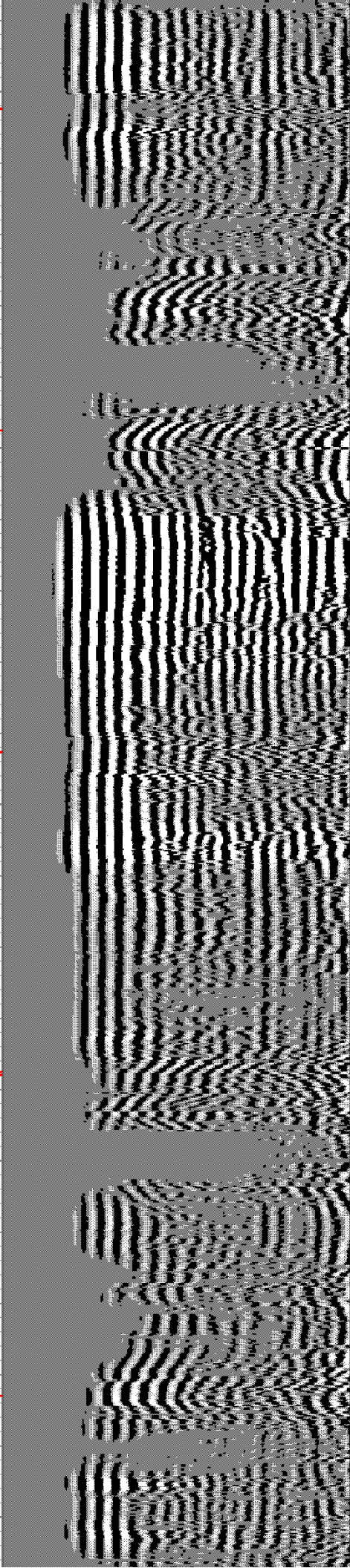
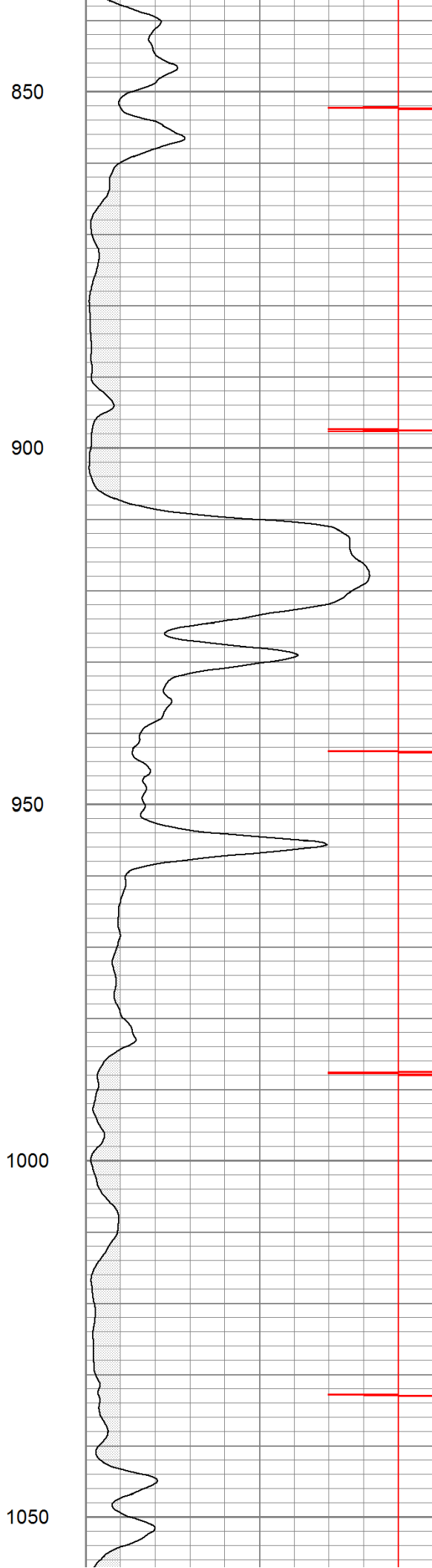
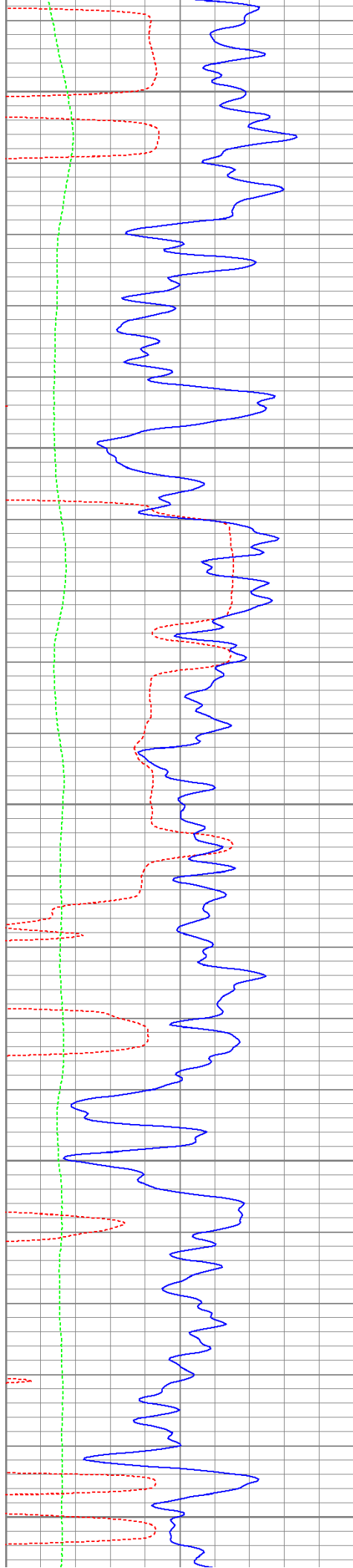
650

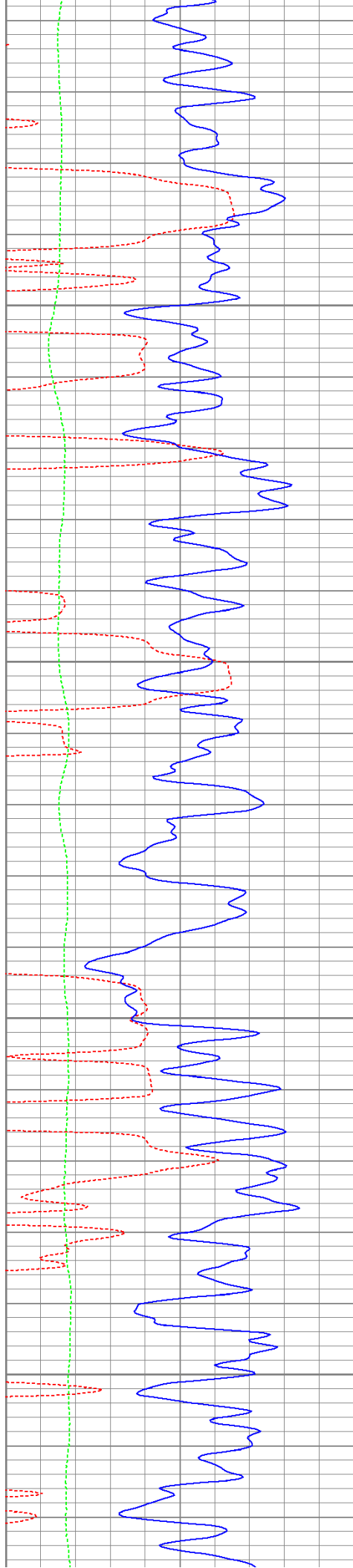
700

750

800





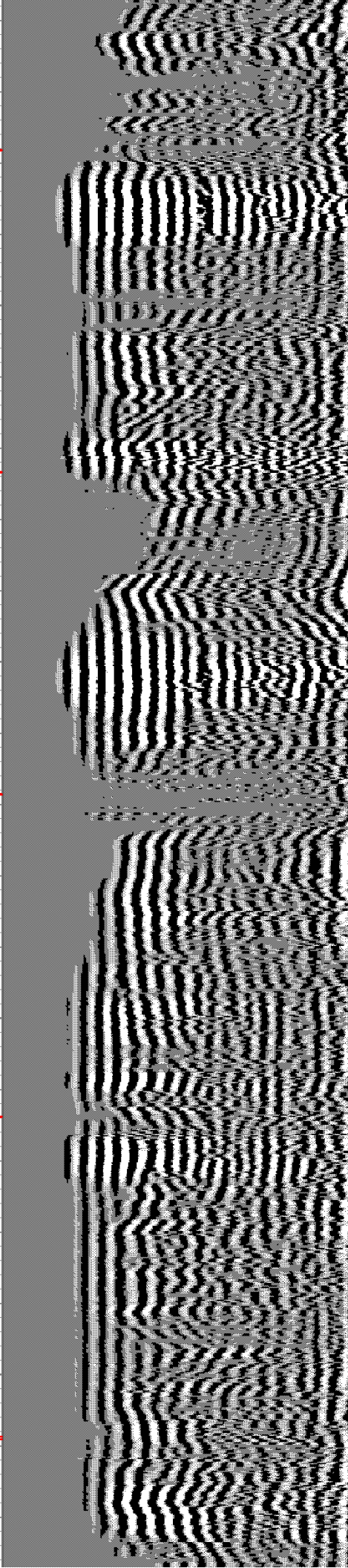
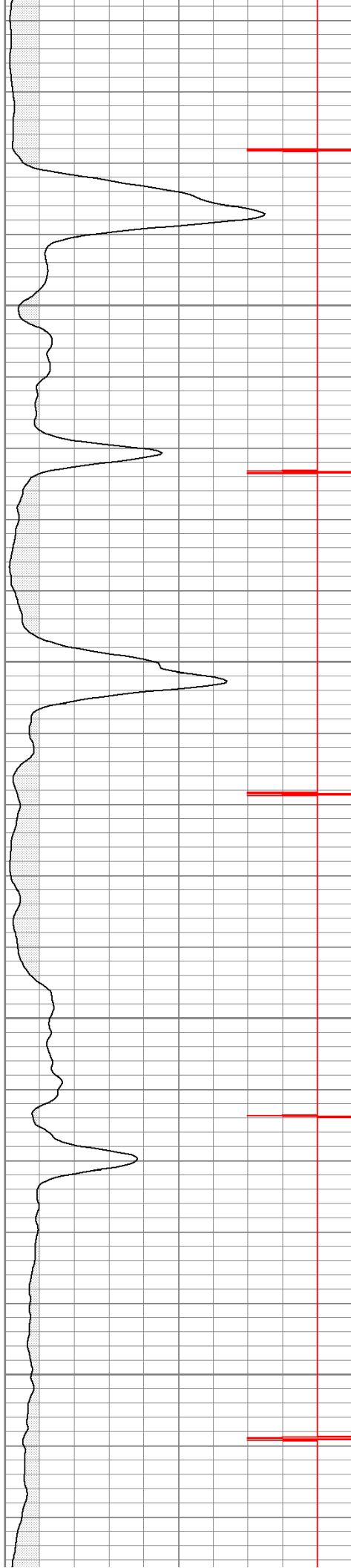


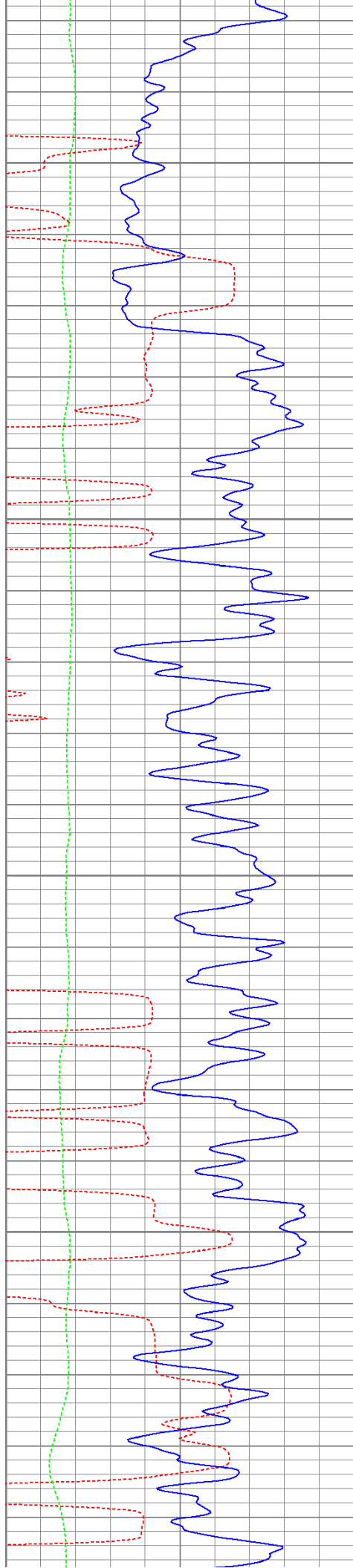
1100

1150

1200

1250



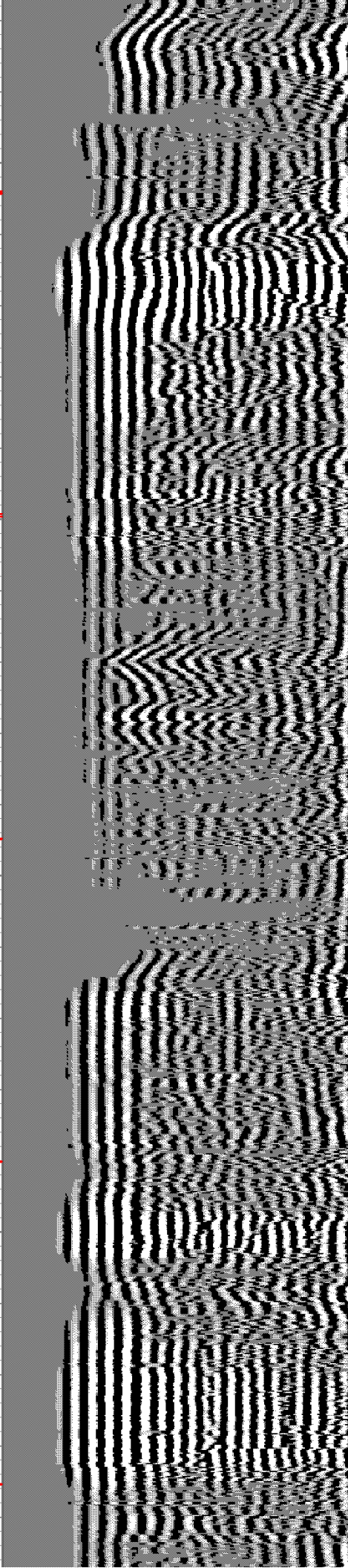
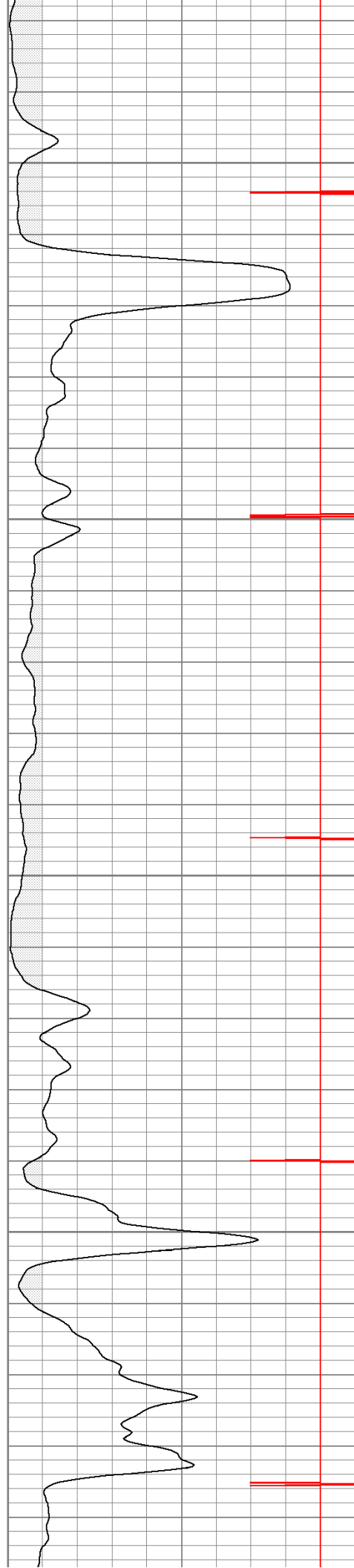


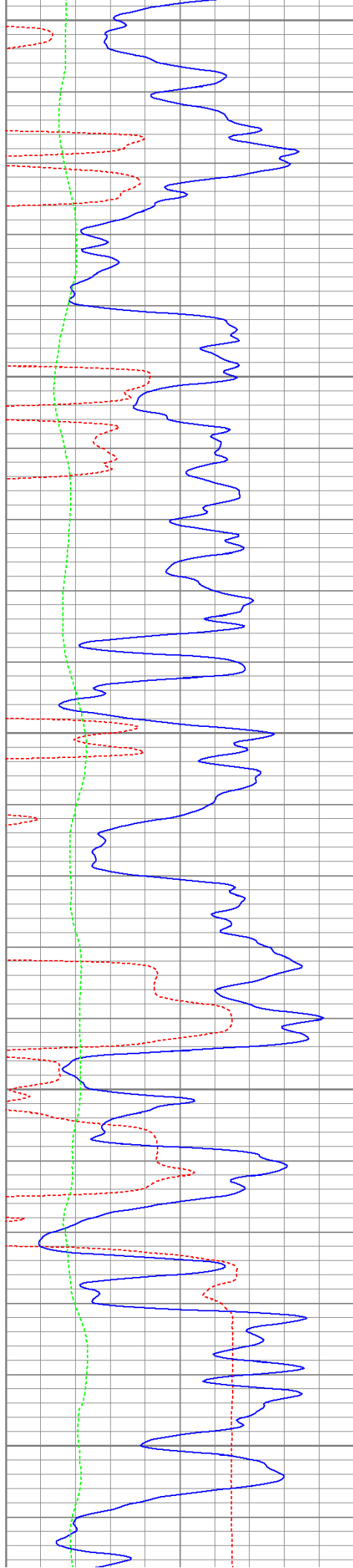
1300

1350

1400

1450





1500

1550

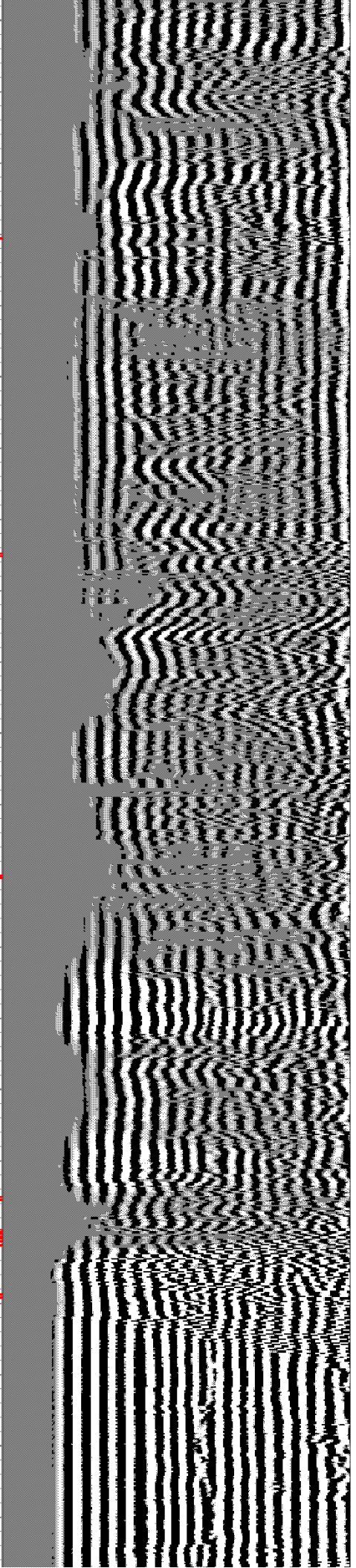
1600

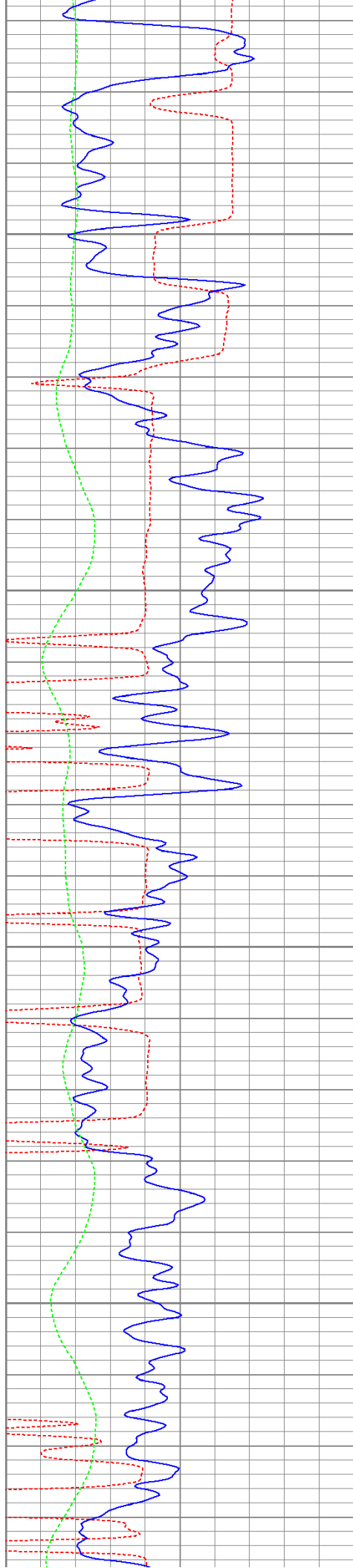
1650

1700



ECP →



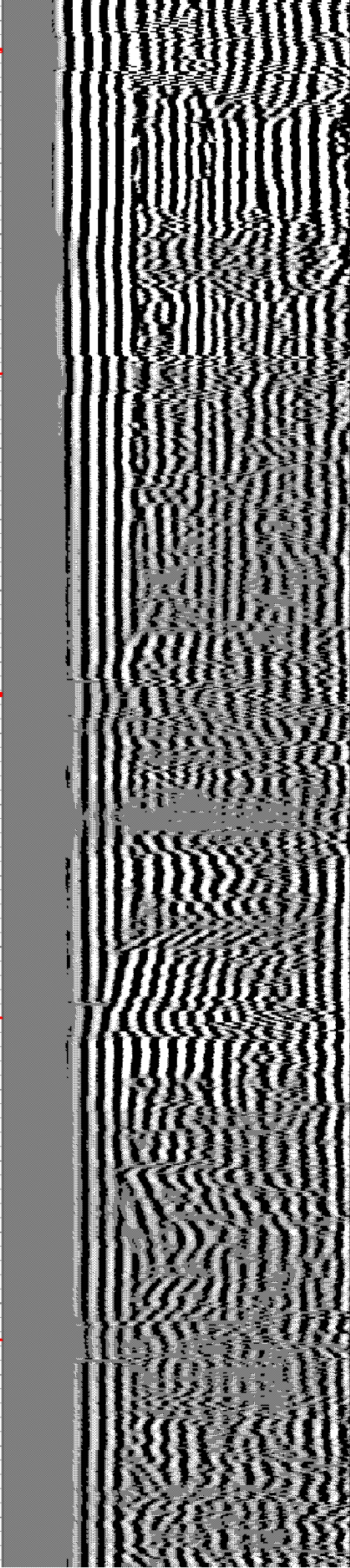


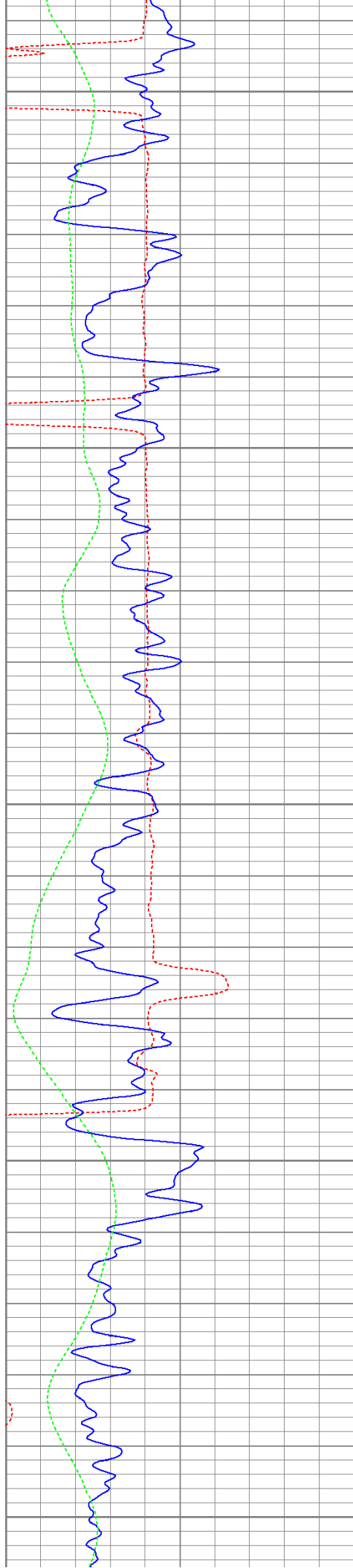
1750

1800

1850

1900





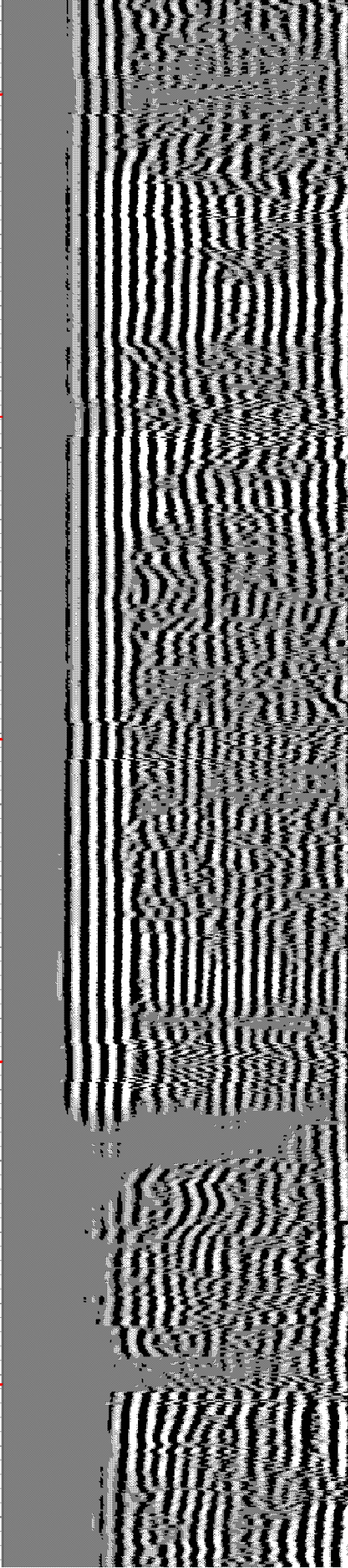
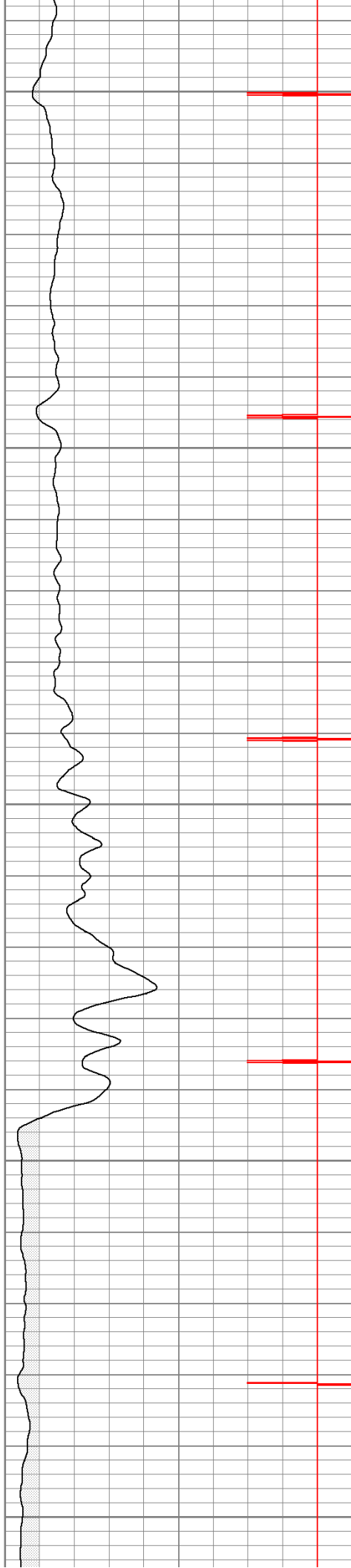
1950

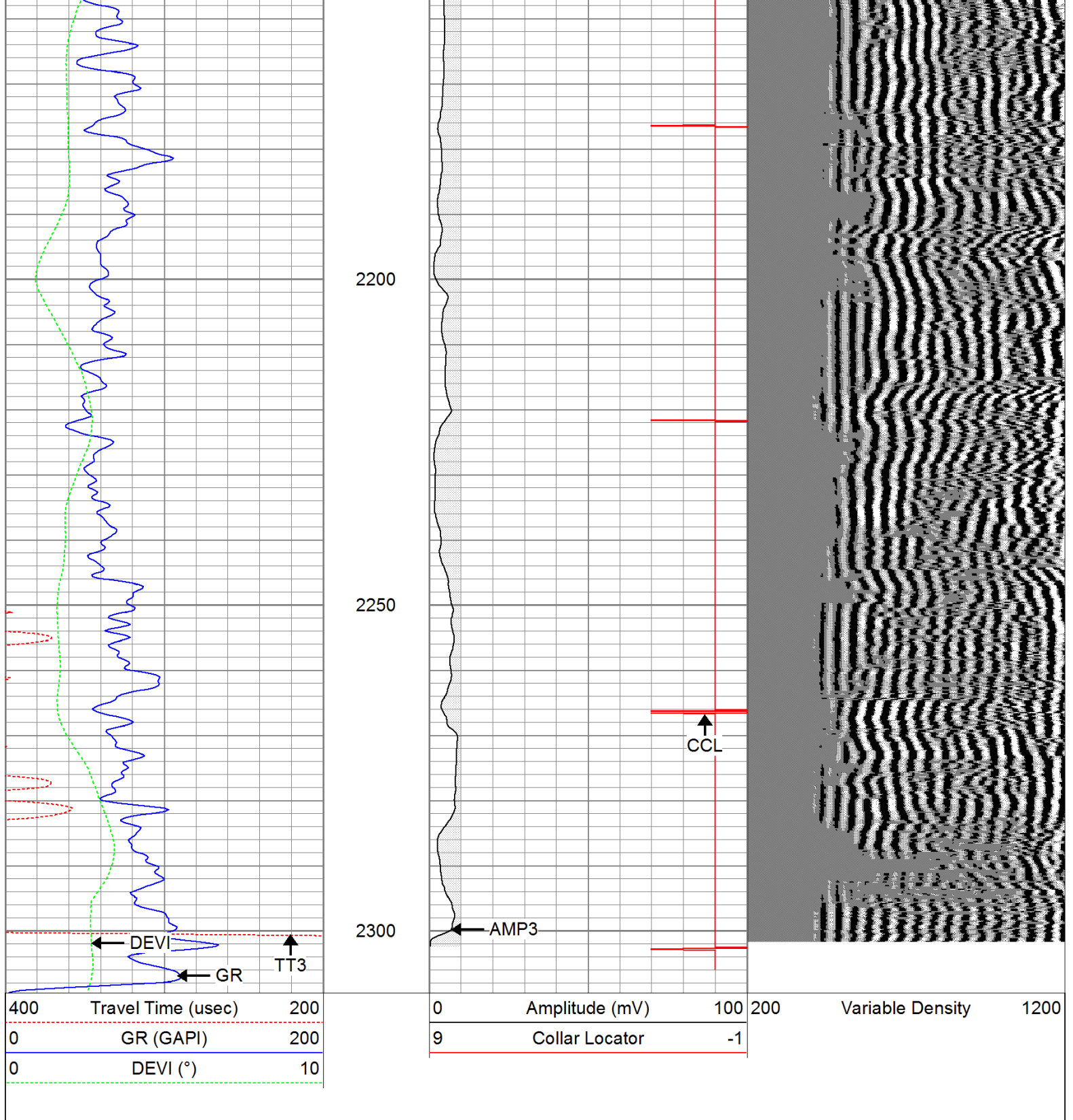
2000

2050

2100

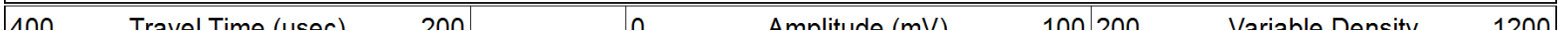
2150





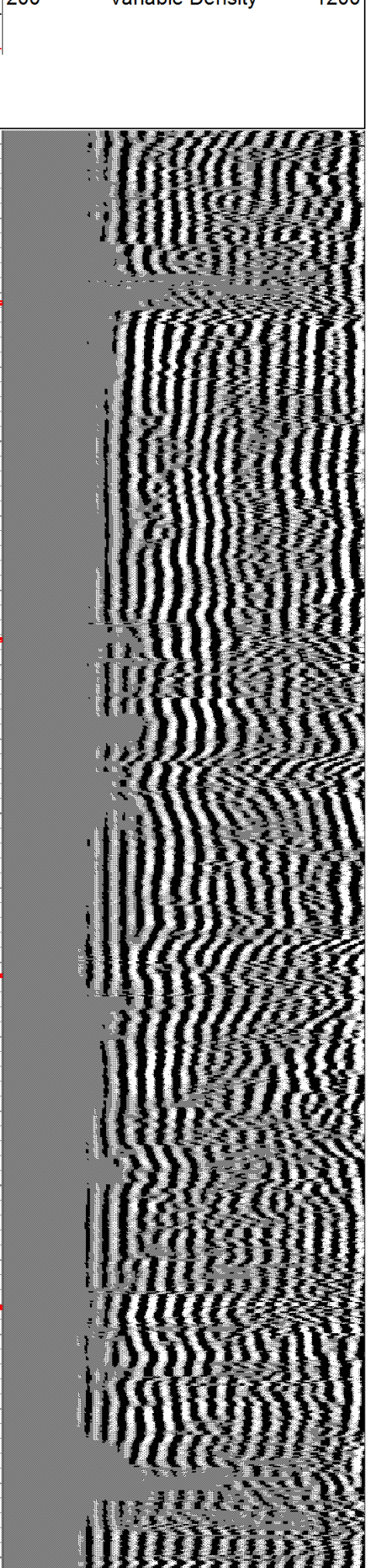
Repeat Pass

Database File: ac08-0872011b.db
Dataset Pathname: pass1
Presentation Format: cbldig
Dataset Creation: Wed Jul 20 07:50:29 2011 by Log Open-Cased 110302
Charted by: Depth in Feet scaled 1:240



0	Travel Time (usec)	200
0	GR (GAPI)	200
0	DEVI (°)	10

0	Amplitude (mV)	100	200
9	Collar Locator	-1	

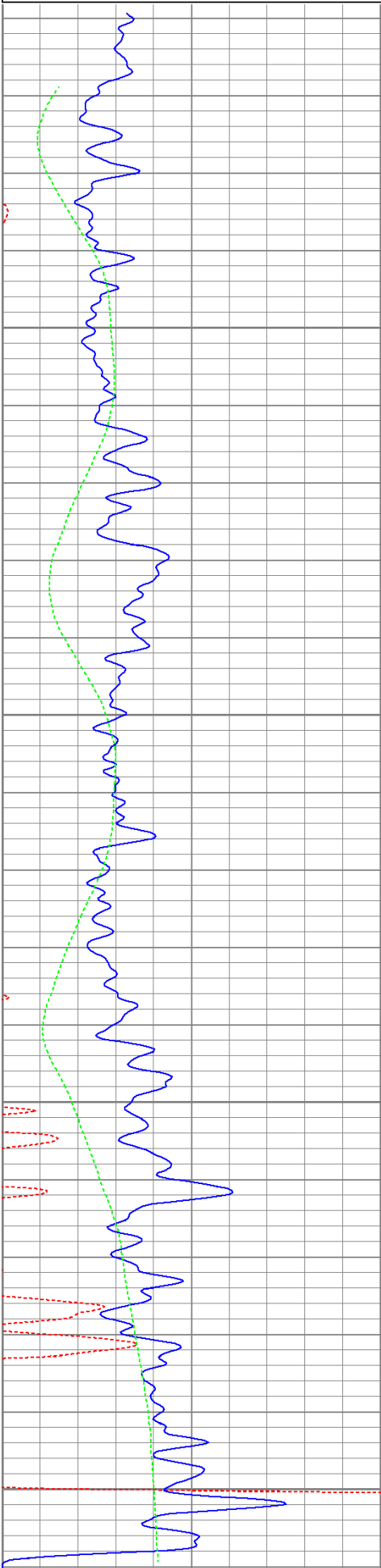


2150

2200


2250

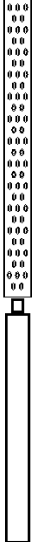

2300



400	Travel Time (usec)	200	0	Amplitude (mV)	100	200	Variable Density	1200
0	GR (GAPI)	200	9	Collar Locator	-1			
0	DEVI (°)	10						

Calibration Report						
Database File:		ac08-0872011b.db				
Dataset Pathname:		pass1				
Dataset Creation:		Wed Jul 20 07:50:29 2011 by Log Open-Cased 110302				
Gamma Ray Calibration Report						
Serial Number:		080616				
Tool Model:		275D_INC				
Performed:		Wed May 04 17:31:09 2011				
Calibrator Value:		200.0	GAPI			
Background Reading:		50.0	cps			
Calibrator Reading:		250.0	cps			
Sensitivity:		1.0000	GAPI/cps			
Inclinometer Calibration Report						
Performed:		Wed May 04 17:39:54 2011				
		Low Read.	High Read.	Low Ref.	High Ref.	
X Accelerometer		-3585.20	3595.40	-1.00	1.00	gee
Y Accelerometer		-3619.40	3520.00	-1.00	1.00	gee
Z Accelerometer						
Cement Bond Log Calibration Report						
Serial Number:		081024				
Tool Model:		PROBEDIGITALCBL				
Performed:		Tue Jul 19 09:25:23 2011				
Depth:		93.4615	ft			
Casing Diameter:		5.5	in			
		3' Spacing	5' Spacing			
Signal Zero:		0	0		mV	
Calibrated Amplitude:		85	85		mV	
Reading at Signal Zero:		-0.00874023	-0.0092041		V	
Reading in Free Pipe:		1.72476	1.66304		V	
Gain:		49.0339	50.83			
Offset:		0.428567	0.467844			

Sensor	Offset (ft)	Schematic	Description	Len (ft)	OD (in)	Wt (lb)
			None	0.75	1.50	5.00
			Star	0.29	1.50	0.50

WVF3	9.04		CBL-PROBEDIGITALCBL (081024) PROBE DIGITAL CBL	8.75	2.75	106.50
WVF5	8.04					
CCL	3.50		Star	0.29	1.50	0.50
ACCX	1.83		GR-275D_INC (080616) 2-3/4" GR-CCL with Inclination	4.50	2.75	50.00
ACCY	1.83					
ACCZ	1.83					
GR	0.83					
Dataset: ac08-0872011b.db: field/well/run1/pass1 Total Length: 14.58 ft Total Weight: 162.50 lb O.D. 2.75 in						