
XTO ENERGY INC EBUSINESS

Apache Canyon 08-08

Las Animas County , Colorado

Cement Multiple Stages

16-Jul-2011

Job Site Documents

The Road to Excellence Starts with Safety

Sold To #: 353810	Ship To #: 2866153	Quote #:	Sales Order #: 8324613
Customer: XTO ENERGY INC EBUSINESS	Customer Rep:		
Well Name: Apache Canyon	Well #: 08-08	API/UWI #:	
Field:	City (SAP): TRINIDAD	County/Parish: Las Animas	State: Colorado
Contractor: ??	Rig/Platform Name/Num: ??		
Job Purpose: Cement Multiple Stages			
Well Type: Development Well	Job Type: Cement Multiple Stages		
Sales Person: FLING, MATTHEW	Srv Supervisor: ROSALES, MATTHEW	MBU ID Emp #: 392095	

Job Personnel

HES Emp Name	Exp Hrs	Emp #	HES Emp Name	Exp Hrs	Emp #	HES Emp Name	Exp Hrs	Emp #
CHAVEZ, JEROME Christophe	7.5	458298	DIRKS, RICHARD E	7.5	485940	KENNEDY, HERRON	7.5	498356
MCKAY, ADAM	7.5	498253	NIELSON, BRANDON K	7.5	479703	PAUMEN, CORD Anthony	7.5	453759
ROSALES, MATTHEW John	7.5	392095						

Equipment

HES Unit #	Distance-1 way	HES Unit #	Distance-1 way	HES Unit #	Distance-1 way	HES Unit #	Distance-1 way
10246780C	50 mile	10248062C	50 mile	10824253C	50 mile	11515861C	50 mile
11562562	50 mile	11562570C	50 mile	11605598	50 mile		

Job Hours

Date	On Location Hours	Operating Hours	Date	On Location Hours	Operating Hours	Date	On Location Hours	Operating Hours
07/15/11	1	0	07/16/11	6.5	3			

TOTAL Total is the sum of each column separately

Job

Job Times

Formation Name						Date	Time	Time Zone
Formation Depth (MD)	Top		Bottom		Called Out	15 - Jul - 2011	20:30	MST
Form Type			BHST		On Location	15 - Jul - 2011	23:00	MST
Job depth MD	2549. ft		Job Depth TVD	2549. ft	Job Started	16 - Jul - 2011	03:54	MST
Water Depth			Wk Ht Above Floor		Job Completed	16 - Jul - 2011	05:49	MST
Perforation Depth (MD)	From		To		Departed Loc	16 - Jul - 2011	06:30	MST

Well Data

Description	New / Used	Max pressure psig	Size in	ID in	Weight lbm/ft	Thread	Grade	Top MD ft	Bottom MD ft	Top TVD ft	Bottom TVD ft
13 3/8" Openhole				7.875				505.	2390.		
Multiple Stage Cementer	Unknow n							.	1672.		
5 1/2" Production Casing	Unknow n		5.5	4.95	15.5		J-55	.	2359.		
8 5/8" Surface Casing	Unknow n		8.625	8.097	24.		J-55	.	505.		

Tools and Accessories

Type	Size	Qty	Make	Depth	Type	Size	Qty	Make	Depth	Type	Size	Qty	Make
Guide Shoe					Packer					Top Plug			
Float Shoe					Bridge Plug					Bottom Plug			
Float Collar					Retainer					SSR plug set			
Insert Float										Plug Container			
Stage Tool										Centralizers			

Miscellaneous Materials

Gelling Agt	Conc	Surfactant	Conc	Acid Type	Qty	Conc	%
Treatment Fld	Conc	Inhibitor	Conc	Sand Type	Size	Qty	

Fluid Data									
Stage/Plug #: 1									
Fluid #	Stage Type	Fluid Name	Qty	Qty uom	Mixing Density lbm/gal	Yield ft ³ /sk	Mix Fluid Gal/sk	Rate bbl/min	Total Mix Fluid Gal/sk
1	FRESH WATER			bbl	8.33	.0	.0	.0	
2	GELLED WATER			bbl	8.33	.0	.0	.0	
		0.2 gal/Mgal LGC-VI UC, BULK (101582755)							
3	TUNED LIGHT TRINIDAD B3	TUNED LIGHT (TM) SYSTEM (452984)		sacks	10.	2.28	8.24		8.24
		8.24 Gal FRESH WATER							
4	DISPLACEMENT			bbl	8.33	.0	.0	.0	
Stage/Plug #: 2									
Fluid #	Stage Type	Fluid Name	Qty	Qty uom	Mixing Density uom	Yield uom	Mix Fluid uom	Rate uom	Total Mix Fluid uom
1	FRESH WATER			bbl	8.33	.0	.0	.0	
2	GELLED WATER			bbl	8.33	.0	.0	.0	
		0.2 gal/Mgal LGC-VI UC, BULK (101582755)							
3	TUNED LIGHT TRINIDAD B3	TUNED LIGHT (TM) SYSTEM (452984)		sacks	10.	2.28	8.24		8.24
		8.24 Gal FRESH WATER							
4	DISPLACEMENT			bbl	8.33	.0	.0	.0	
Calculated Values		Pressures		Volumes					
Displacement		Shut In: Instant		Lost Returns		Cement Slurry		Pad	
Top Of Cement		5 Min		Cement Returns	5BBL	Actual Displacement		Treatment	
Frac Gradient		15 Min		Spacers		Load and Breakdown		Total Job	324
Rates									
Circulating		Mixing		Displacement		Avg. Job		4	
Cement Left In Pipe	Amount 47 ft	Reason	Shoe Joint						
Frac Ring # 1 @	ID	Frac ring # 2 @	ID	Frac Ring # 3 @	ID	Frac Ring # 4 @	ID		
The Information Stated Herein Is Correct				Customer Representative Signature					

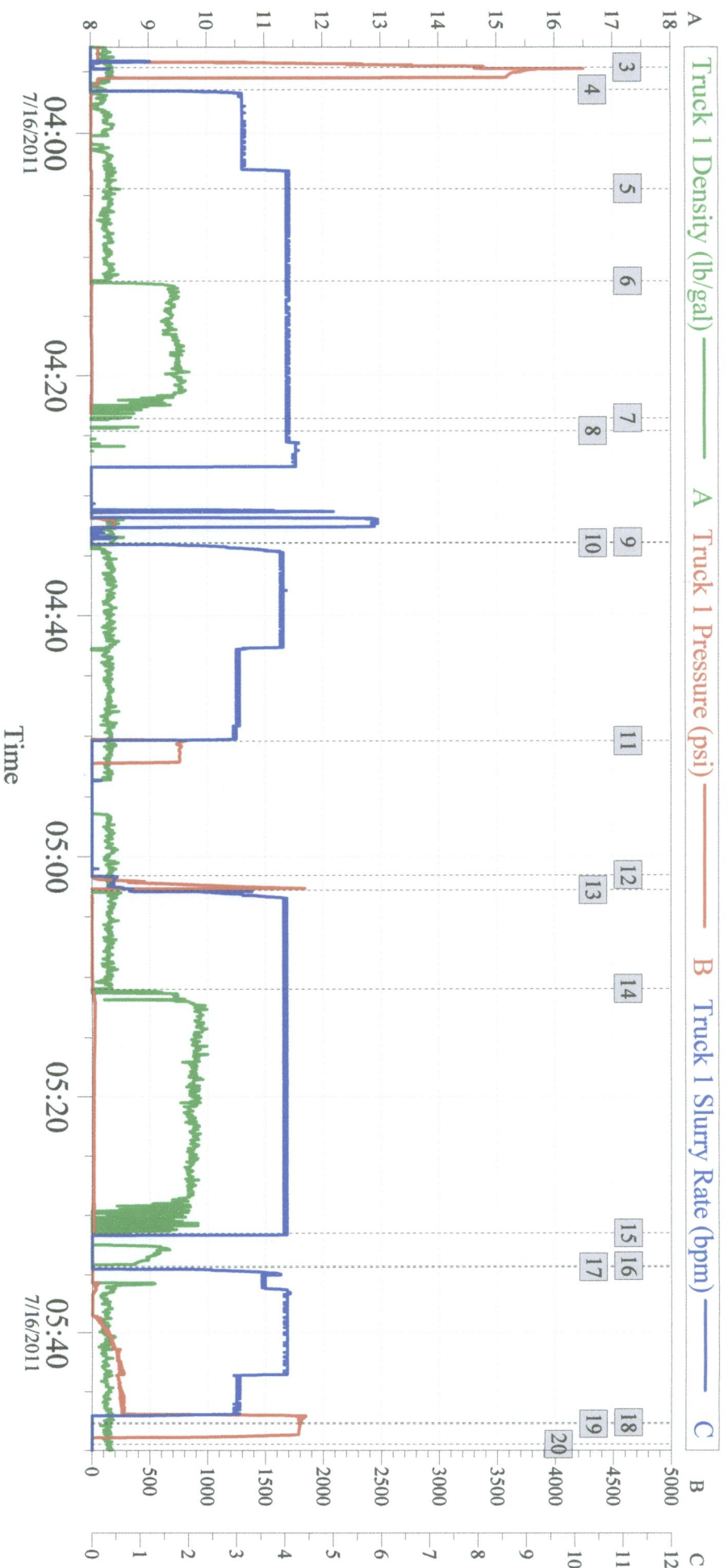
The Road to Excellence Starts with Safety

Sold To #: 353810	Ship To #: 2866153	Quote #:	Sales Order #: 8324613
Customer: XTO ENERGY INC EBUSINESS	Customer Rep:		
Well Name: Apache Canyon	Well #: 08-08	API/UWI #:	
Field:	City (SAP): TRINIDAD	County/Parish: Las Animas	State: Colorado
Legal Description:			
Lat:		Long:	
Contractor: ??	Rig/Platform Name/Num: ??		
Job Purpose: Cement Multiple Stages	Ticket Amount:		
Well Type: Development Well	Job Type: Cement Multiple Stages		
Sales Person: FLING, MATTHEW	Srv Supervisor: ROSALES, MATTHEW	MBU ID Emp #: 392095	

Activity Description	Date/Time	Cht #	Rate bbl/ min	Volume bbl		Pressure psig		Comments
				Stage	Total	Tubing	Casing	
Pre-Job Safety Meeting	07/16/2011 03:45							
Start Job	07/16/2011 03:54							
Test Lines	07/16/2011 03:54		0.5				3326.0	
Pump Spacer 1	07/16/2011 03:56		3	26	26		.0	WATER SPACER
Pump Spacer 2	07/16/2011 04:04		4	30	56		.0	GEL WATER SPACER WITH POLYFLAKE
Pump Cement	07/16/2011 04:12		4	49	105		.0	120SKS TUNED LIGHT CEMENT MIXED WITH WATER PROVIDED BY RIG
Shutdown	07/16/2011 04:23							LOAD PLUG
Clean Lines	07/16/2011 04:24							
Drop Plug	07/16/2011 04:33							
Pump Displacement	07/16/2011 04:33		4	55	160		.0	
Bump Plug	07/16/2011 04:50		3				785.0	
Shutdown	07/16/2011 04:50							
Drop Opening Device For Multiple Stage Cementer	07/16/2011 04:51							
Open Multiple Stage Cementer	07/16/2011 05:01		0.5	2	162		1600.0	
Pump Spacer 1	07/16/2011 05:02		4	30	192		40.0	GEL WATER SPACER WITH POLYFLAKE
Pump Cement	07/16/2011 05:10		4	92	284		40.0	225SKS TUNED LIGHT CEMENT MIXED WITH WATER PROVIDED BY RIG

Activity Description	Date/Time	Cht #	Rate bbl/ min	Volume bbl		Pressure psig		Comments
				Stage	Total	Tubing	Casing	
Shutdown	07/16/2011 05:31							LOAD PLUG
Drop Plug	07/16/2011 05:34							
Pump Displacement	07/16/2011 05:35		4	40	324		322.0	
Close Multiple Stage Cementer	07/16/2011 05:47		3				1825. 0	
Check Floats	07/16/2011 05:49							
End Job	07/16/2011 05:50							

XTO - APACHE CANYON 08-08 PRODUCTION



Global Event Log

Intersection	T1P	Intersection	T1P	Intersection	T1P
3 Test Lines	03:54:39 3326	4 Water Spacer	03:56:28 0.000	5 Gel Water Spacer	04:04:26 3.650
6 Pump Cement 10#/gal	04:12:02 -3.889	7 Shutdown	04:23:35 -3.425	8 Clean Lines	04:24:38 -6.748
9 Drop Bottom Plug	04:33:55 -13.61	10 Pump Displacement	04:33:59 -13.61	11 Bump Plug	04:50:25 799.9
12 Open Multiple Stage Cementer	05:01:34 0.181	13 Gel Water Spacer	05:02:49 -8.327	14 Pump Cement 10#/gal	05:10:58 -0.634
15 Shutdown	05:31:32 8.655	16 Drop Top Plug	05:34:17 4.388	17 Pump Displacement	05:34:22 4.240
18 Bump Plug	05:47:37 1798	19 Close Multiple Stage Cementer	05:47:44 1794	20 End Job	05:49:28 0.000

Customer: XTO
Well Description: APACHE CANYON 08-08
Halliburton Service Supervisor: Matthew J. Rosales

Job Date: 16-Jul-2011
Halliburton Operator: Brandon Nielson

Sales Order #: 8324613
XTO Customer Rep.: Ron Coffee

OptiCem v6.4.10
16-Jul-11 05:56