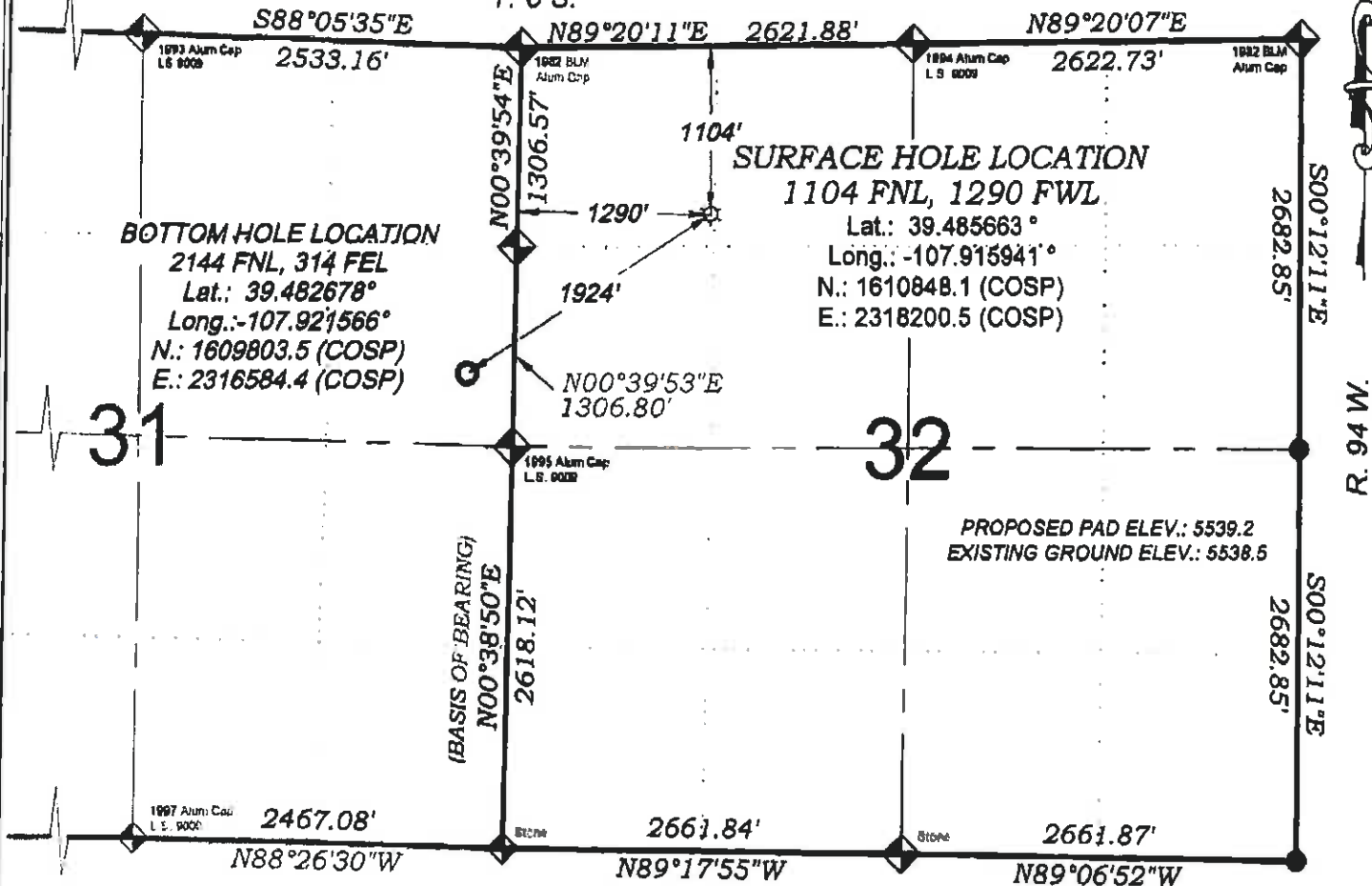


Duggan RWF 442-31

T. 6 S.



THERE ARE NO VISIBLE
IMPROVEMENTS WITHIN 400'
OF THIS LOCATION



SURVEYORS STATEMENT

I, MICHAEL J. LANGHORNE, A REGISTERED LAND SURVEYOR IN THE STATE OF COLORADO DO HEREBY CERTIFY THAT THE SURVEY SHOWN HEREON WAS PREPARED UNDER MY DIRECT SUPERVISION AND HAS BEEN STAKED ON THE GROUND AS SHOWN ON THE PLAT AND CHECKING THAT THIS MAP IS A TRUE REPRESENTATION THEREOF.

- LEGEND -

FIELD LOCATED SECTION
MONUMENTS AS DESCRIBED

FIELD SURVEYED
WELL LOCATION

CALCULATED BOTTOM
HOLE LOCATION

CALCULATED SECTION
CORNER LOCATION

NOTES

- 1) ELEVATIONS BASED ON N.A.V.D. 1988 PUBLISHED COORDINATES.
- 2) LATITUDES AND LONGITUDES ARE BASE ON NAD 83, PUBLISHED COORDINATES
- 3) STATE PLANE COORDINATES ARE BASED ON COLORADO CENTRAL ZONE, U.S. SURVEY FEET.
- 4) ELEVATION MASK SET TO 15"
- 5) GPS OPERATOR J. KIRKPATRICK, OBSERVED A PDOP 1.8 ON SURVEY POINT NUMBER 160004.
- 6) SURFACE AND BOTTOM HOLE LOCATIONS ARE MEASURED 90° FROM SECTION LINES.

WELL LOCATION PLAT Prepared for:

Williams. Williams Production, RMT

NW1/4 NW1/4, SECTION 32
T. 6 S., R. 94 W. of the 6th P.M.
GARFIELD COUNTY, COLORADO

REFERENCES

- 1) PARTIALLY SURVEYED T. 6 S., R. 94 W., 6th P.M. (GLO PLAT)
- 2) U.S.G.S. QUAD: RULISON, CO

SURVEY DATE: 5/16/11
MAP DATE: 5/28/11
SCALE: 1" = 1200'
PLAT: 1 of 1
PROJECT: Williams Valley

BOOKCLIFF
Survey Services, Inc.

101 East Third Street
Boulder, Colorado 80502
Ph: (970) 625-2720
Fax: (970) 625-2773