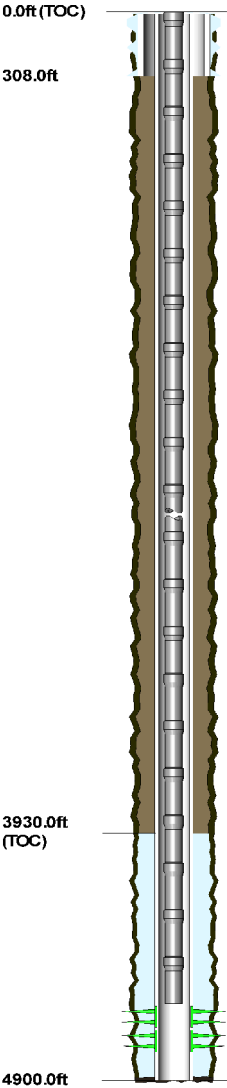


Well Name:DOS RIOS J 33-10
WINS No: 76058
API No: 0512315234
State: COLORADO
County: WELD
Field Name: WATTENBERG
Well Directions: 54TH ST & 65TH AVE, N 1/10 PASS UNIT, E INTO

Location Description: NW SE 33 5N 66W -- --
Working Interest:
Spud Date: 12/08/1991
Ground Elevation:
KB Height:
TD Date:

TD:
TVD:
PBTD:
PB TVD:

Cement Depths



HOLE SECTIONS							LOGGING DATA							
HOLE SECTIONS	Size	Top	Btm	TD Date	Date	Tool Description	MD Top	MD Base						
SURFACE	12.25C	10	308											
PRODUCTION	7.875	10	4900											
CASING/TUBING/WELLBORE EQUIPMENT DATA														
TUBULARS	Tool Type	Joints	Size	Weight	Grade	Thread	Top D	Btm D	Burst	Collapse	Capacity	Length	ID	Drift ID
8 5/8 IN CASING	Casing	7	8.625				10	308				298.00		
4 1/2 IN CASING	Casing	123	4.500	10.50	J-55	STC	10	4900			0.02	4,890.00	4.052	3.927
2 3/8 IN TUBING	Tubing	2	2.375	4.70	J-55	External-l	0	4745			0.00	4,745.00	1.995	1.901
CEMENT INFORMATION														
CEMENT JOBS	Stage	Cement Jobs		Sacks	Returns	Displ. Fluid	Top D	Btm D	cbl					
8 5/8 IN CASING	PRIMARY	LEAD	CEMENT	225			0	308	No					
4 1/2 IN CASING	PRIMARY	LEAD	CEMENT	200			3,930	4,900	Yes					
FORMATION TOPS							PUMP EQUIPMENT							
Strat Unit	Formation	MD Top	MD Base	Comments	Type	Description								
SUSSEX	SUSSEX	4,313		PICK_QUALIFIER:										
SHANNON	SHANNON	4,756		PICK_QUALIFIER:										
/BENTONITE/	/BENTONITE/													
NIOBRARA	NIOBRARA	4,756		PICK_QUALIFIER:										
ROCKY RIDGE /SD/	ROCKY RIDGE /SD/			PICK_QUALIFIER:										
PERFORATIONS														
Date	Formation Zone	Top	Btm	SPF	No. Holes	Diameter	Phasing	Reason	Status	Comments				
12/15/199	SHANNON /BE	4756	4764	2	16				OPEN					
12/15/199	SHANNON /BE	4776	4786	2	20				OPEN					