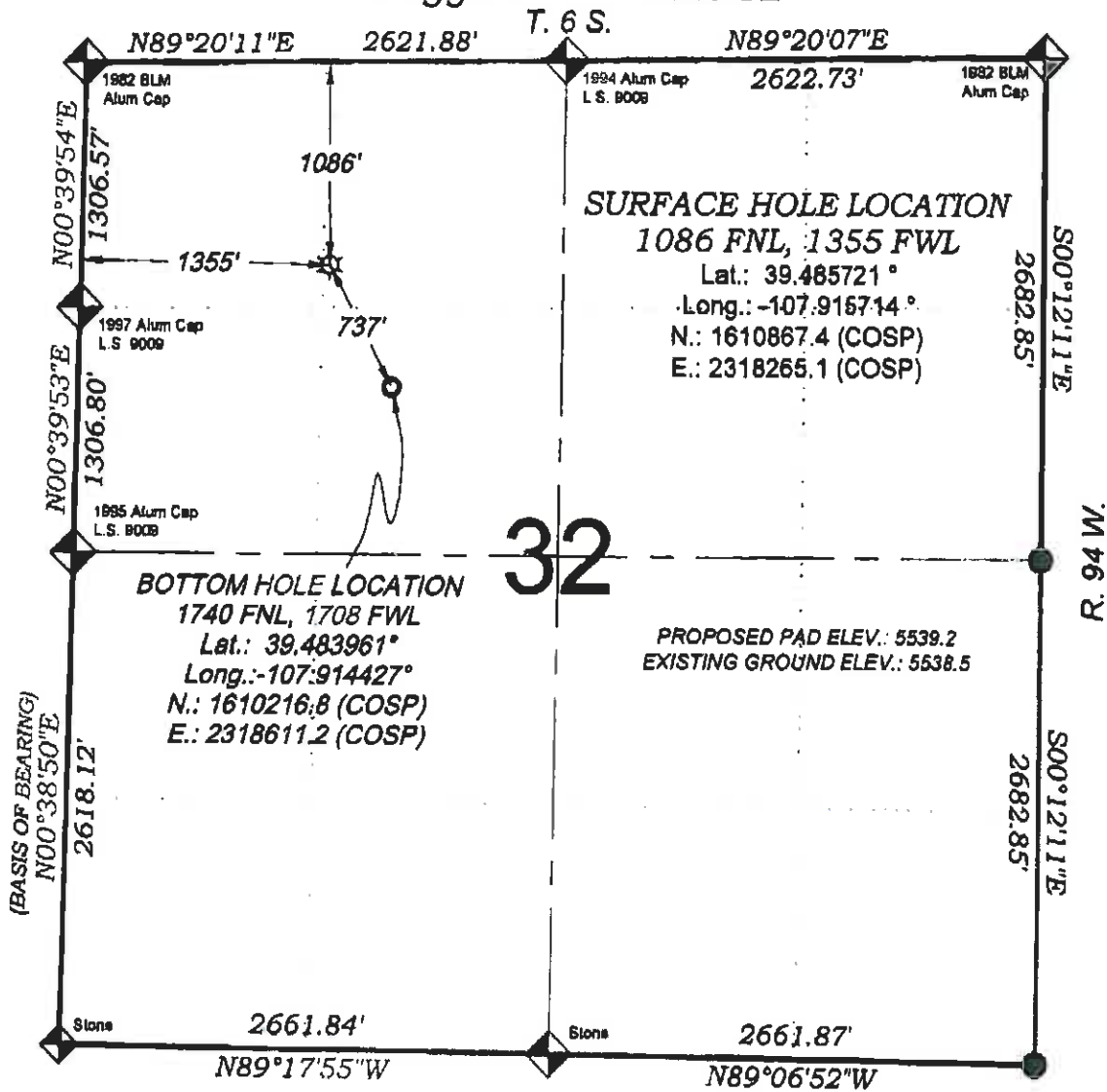


Duggan RWF 322-32



THERE ARE NO VISIBLE
IMPROVEMENTS WITHIN 400'
OF THIS LOCATION



- LEGEND -

FIELD LOCATED SECTION
MONUMENTS AS DESCRIBED

FIELD SURVEYED
WELL LOCATION

CALCULATED BOTTOM
HOLE LOCATION

CALCULATED SECTION
CORNER LOCATION

SURVEYORS STATEMENT

I, MICHAEL J. LANGHORNE, A REGISTERED LAND SURVEYOR IN THE
STATE OF COLORADO DO HEREBY CERTIFY THAT THE SURVEY SHOWN
HEREON WAS PREPARED UNDER MY DIRECT SUPERVISION AND HAS
BEEN STAKED ON THE GROUND AS SHOWN ON THE PLAT AND
CHECKING THAT THIS MAP IS A TRUE REPRESENTATION THEREOF.

MICHAEL J. LANGHORNE, COLORADO REGISTRATION NO. 36572
FOR AND ON BEHALF OF
BOOKCLIFF SURVEY SERVICES, INC.

REFERENCES

- 1) PARTIALLY SURVEYED T. 6 S., R. 94 W., 6th P.M (GLO PLAT)
- 2) U.S.G.S. QUAD: RULSON, CO

NOTES

- 1) ELEVATIONS BASED ON N.A.V.D. 1988 PUBLISHED COORDINATES
- 2) LATITUDES AND LONGITUDES ARE BASE ON NAD 83, PUBLISHED COORDINATES
- 3) STATE PLANE COORDINATES ARE BASED ON COLORADO CENTRAL ZONE, U.S. SURVEY FEET.
- 4) ELEVATION MASK SET TO 15'
- 5) OPS OPERATOR J. KIRKPATRICK, OBSERVED A PDOP 1.8 ON SURVEY POINT NUMBER 160004.
- 6) SURFACE AND BOTTOM HOLE LOCATIONS ARE MEASURED 90° FROM SECTION LINES.

WELL LOCATION PLAT Prepared for:

Williams Williams Production, RMT

NE1/4 NW1/4, SECTION 32
T. 6 S., R. 94 W. of the 6th. P.M.
GARFIELD COUNTY, COLORADO

SURVEY DATE: 5/16/11
MAP DATE: 6/29/11
SCALE: 1" = 1000'
PLAT: 1 of 1
PROJECT: Williams Valley

BOOKCLIFF
Survey Services, Inc.

300 East Third Street
Boulder, Colorado 80501
Ph: (303) 440-2720
Fax: (303) 440-2773