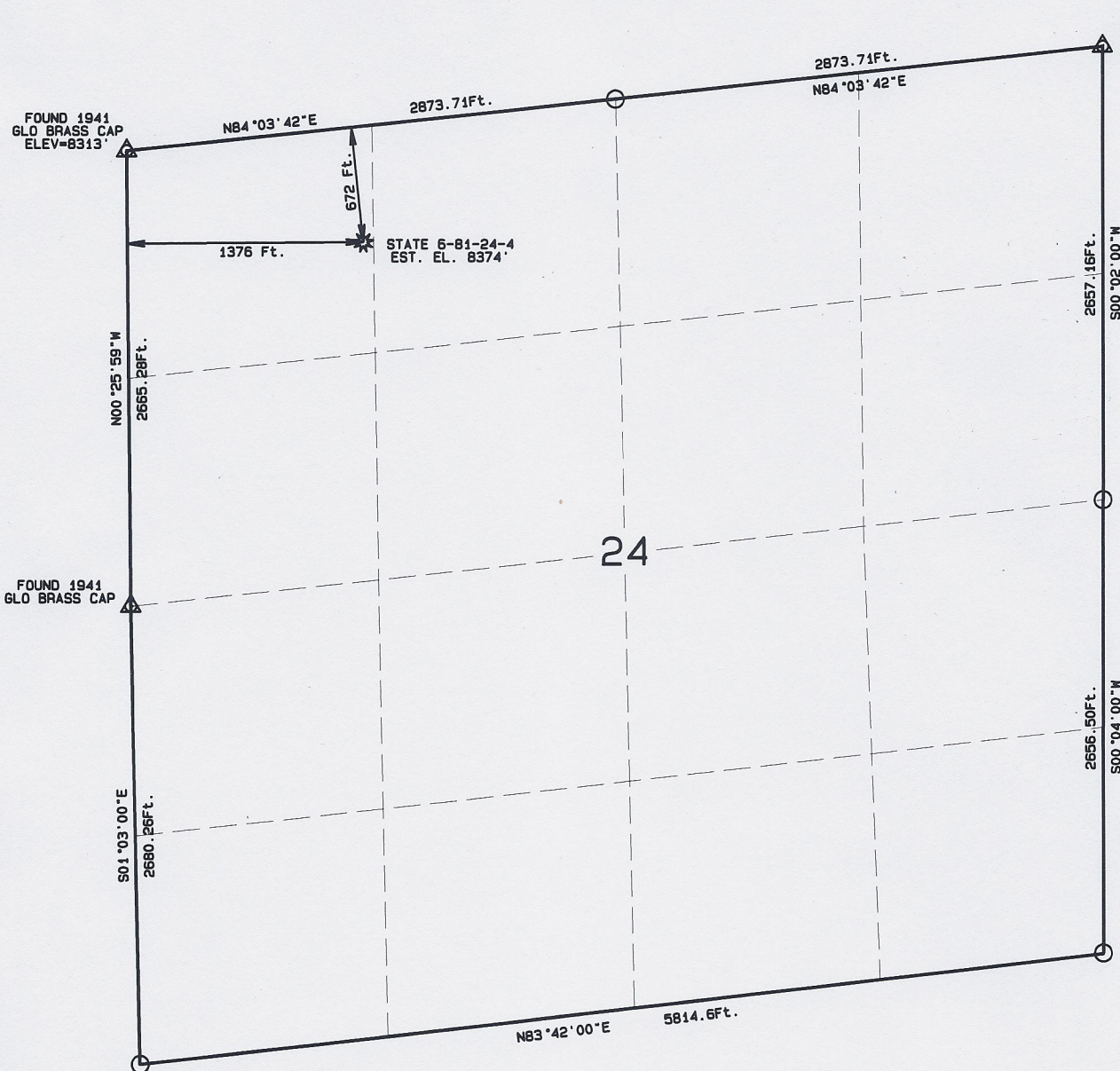


WELL LOCATION CERTIFICATE

THIS MAP DOES NOT REPRESENT A BOUNDARY SURVEY

STATE 6-81-24-4

SECTION 24
TOWNSHIP 6 NORTH
RANGE 81 WEST



0 1000



SCALE 1"=1000'

IN ACCORDANCE WITH A REQUEST FROM JAMES KARO - DAKOTA EXPLORATION, NORTH PARK ENGINEERING & CONSULTING, INC., HAS DETERMINED THE LOCATION OF THE STATE 6-81-24-4 TO BE 672' FNL, 1376' FNL, AS MEASURED AT NINETY (90) DEGREES FROM THE SECTION LINES, SECTION 24, TOWNSHIP 6 NORTH, RANGE 81 WEST, 6TH PRINCIPAL MERIDIAN, JACKSON COUNTY, COLORADO.

I HEREBY CERTIFY THAT THIS WELL LOCATION CERTIFICATE WAS PREPARED BY ME, OR UNDER MY DIRECT SUPERVISION, THAT THE FIELD WORK WAS COMPLETED ON 10/17/2010, FOR AND ON BEHALF OF DAKOTA EXPLORATION, THAT IT IS NOT A LAND SURVEY PLAT OR AN IMPROVEMENT SURVEY PLAT, AND THAT IT IS NOT TO BE RELIED UPON FOR ESTABLISHMENT OF FENCE, BUILDING, OR OTHER FUTURE IMPROVEMENT LINES.

NOTES:

- 1) BASIS OF BEARINGS FOR THIS MAP ARE BASED UPON GPS OBSERVATIONS MADE ON 10/11/2010 BETWEEN MONUMENTS LOCATED AT THE NORTHWEST SECTION CORNER AND THE NORTHEAST SECTION CORNER OF SAID SECTION AND WITH ALL BEARINGS SHOWN HEREON RELATIVE THERETO.
- 2) ELEVATIONS ARE BASED UPON THE AVERAGE OF SPOT ELEVATIONS DEPICTED ON THE USGS 7.5 MINUTE QUADRANGLE MAP OF THE SECTION SHOWN HEREON.
- 3) THERE ARE NO VISIBLE IMPROVEMENTS WITHIN 400 FEET OF THE LOCATION.
- 4) THERE ARE NO VISIBLE HYDROLOGIC FEATURES WITHIN 1000' OF THE LOCATION.
- 5) THE LOCATION FALLS IN AN OPEN FIELD (SURFACE USE AGRICULTURAL).

LATITUDE & LONGITUDE (NAD 83 SURVEY)
LATITUDE: N 40.48007°
LONGITUDE: W 106.44102°
PDOP: 1.7

LEGEND

- △ FOUND CORNER
- RECORD CORNER
- ☆ POSITION (GLO)
- ☆ PROPOSED WELL



NOTICE: According to Colorado law you MUST commence any legal action based upon any defect in the W.L.C. within three years after you first discover such defect. In no event may any action based upon this defect in this W.L.C. be commenced more than ten years from this said date of the certification shown hereon.

