

T6N, R89W, 6th. P.M.

N89°33'E - 5270.10' (G.L.O.)

SWEPI LP

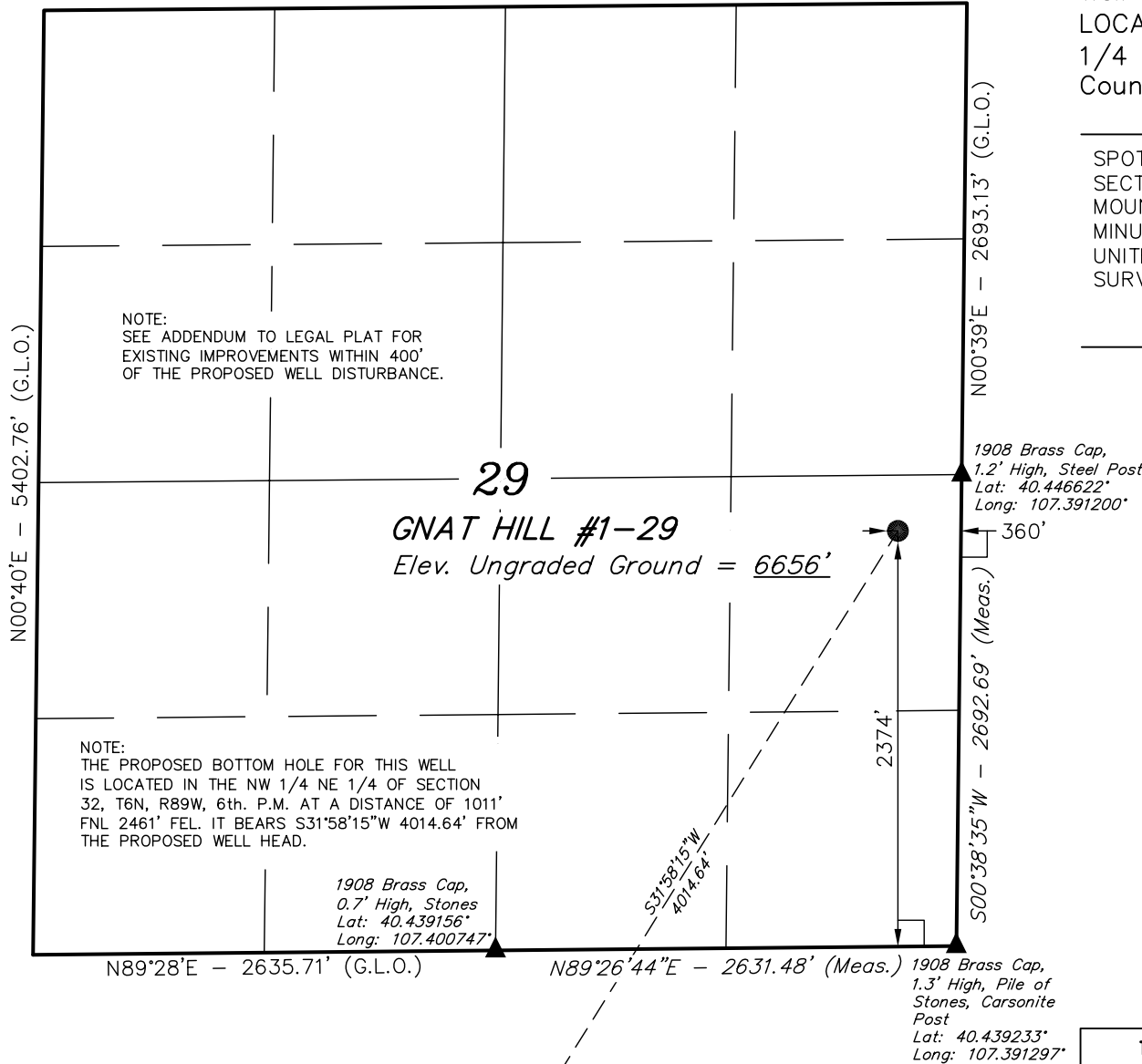
Well location, GNAT HILL #1-29 (SURFACE LOCATION), located as shown in the NE 1/4 SE 1/4 of Section 29, T6N, R89W, 6th. P.M., Routt County, Colorado.

BASIS OF ELEVATION

SPOT ELEVATION LOCATED IN THE SOUTHWEST 1/4 OF SECTION 20, T6N, R88W, 6th P.M. TAKEN FROM THE BREEZE MOUNTAIN, QUADRANGLE, COLORADO, MOFFAT COUNTY, 7.5 MINUTE QUAD (TOPOGRAPHIC MAP) PUBLISHED BY THE UNITED STATES DEPARTMENT OF THE INTERIOR, GEOLOGICAL SURVEY. SAID ELEVATION IS MARKED AS BEING 6445 FEET.

BASIS OF BEARINGS

BASIS OF BEARINGS IS A G.P.S. OBSERVATION.



NOTE:
SEE ADDENDUM TO LEGAL PLAT FOR
EXISTING IMPROVEMENTS WITHIN 400'
OF THE PROPOSED WELL DISTURBANCE.

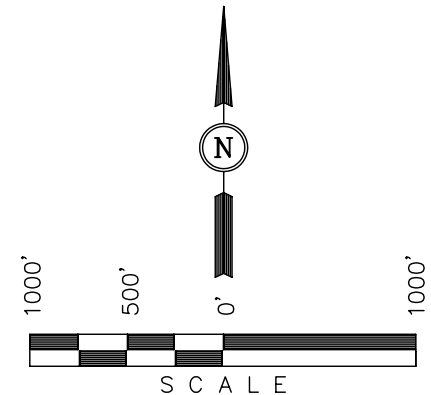
29
GNAT HILL #1-29
Elev. Ungraded Ground = 6656'

NOTE:
THE PROPOSED BOTTOM HOLE FOR THIS WELL
IS LOCATED IN THE NW 1/4 NE 1/4 OF SECTION
32, T6N, R89W, 6th. P.M. AT A DISTANCE OF 1011'
FNL 2461' FEL. IT BEARS S31°58'15"W 4014.64' FROM
THE PROPOSED WELL HEAD.

1908 Brass Cap,
0.7' High, Stones
Lat: 40.439156°
Long: 107.400747°

1908 Brass Cap,
1.2' High, Steel Post
Lat: 40.446622°
Long: 107.391200°

1908 Brass Cap,
1.3' High, Pile of
Stones, Carsonite
Post
Lat: 40.439233°
Long: 107.391297°



CERTIFICATE

THIS IS TO CERTIFY THAT THE ABOVE PLAT WAS PREPARED FROM
FIELD NOTES OF ACTUAL SURVEYS MADE BY ME OR UNDER MY
SUPERVISION AND THAT THE SAME ARE TRUE AND CORRECT TO THE
BEST OF MY KNOWLEDGE AND BELIEF.

REGISTERED LAND SURVEYOR
REGISTRATION NO. 17492
STATE OF COLORADO
07-11-11

LEGEND:

- └─┘ = 90° SYMBOL
- = PROPOSED WELL HEAD.
- ▲ = SECTION CORNERS LOCATED.

PDOP = 2.1

NAD 83 (SURFACE LOCATION)
LATITUDE = 40°26'44.66" (40.445739)
LONGITUDE = 107°23'33.02" (107.392506)
NAD 27 (SURFACE LOCATION)
LATITUDE = 40°26'44.76" (40.445767)
LONGITUDE = 107°23'30.80" (107.391889)

UINTAH ENGINEERING & LAND SURVEYING 85 SOUTH 200 EAST - VERNAL, UTAH 84078 (435) 789-1017		
SCALE 1" = 1000'	DATE SURVEYED: 06-28-11	DATE DRAWN: 07-07-11
PARTY B.H. N.F. J.I.	REFERENCES G.L.O. PLAT	
WEATHER WARM	FILE	SWEPI LP

T6N, R89W, 6th. P.M.

SWEPI LP

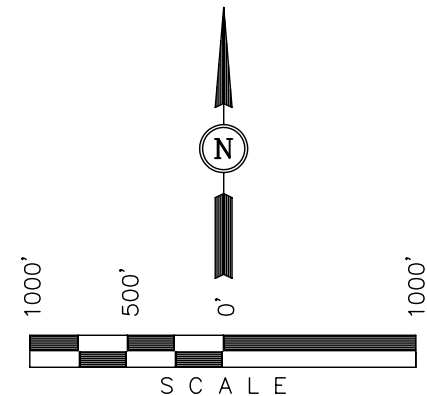
Well location, GNAT HILL #1-29 (TARGET BOTTOM HOLE), located as shown in the NW 1/4 NE 1/4 of Section 32, T6N, R89W, 6th. P.M., Routt County, Colorado.

BASIS OF ELEVATION

SPOT ELEVATION LOCATED IN THE SOUTHWEST 1/4 OF SECTION 20, T6N, R88W, 6th P.M. TAKEN FROM THE BREEZE MOUNTAIN, QUADRANGLE, COLORADO, MOFFAT COUNTY, 7.5 MINUTE QUAD (TOPOGRAPHIC MAP) PUBLISHED BY THE UNITED STATES DEPARTMENT OF THE INTERIOR, GEOLOGICAL SURVEY. SAID ELEVATION IS MARKED AS BEING 6445 FEET.

BASIS OF BEARINGS

BASIS OF BEARINGS IS A G.P.S. OBSERVATION.



CERTIFICATE

THIS IS TO CERTIFY THAT THE ABOVE PLAT WAS PREPARED FROM FIELD NOTES OF ACTUAL SURVEYS MADE BY ME OR UNDER MY SUPERVISION AND THAT THE SAME ARE TRUE AND CORRECT TO THE BEST OF MY KNOWLEDGE AND BELIEF.

REGISTERED LAND SURVEYOR
REGISTRATION NO. 17492
STATE OF COLORADO

UINTAH ENGINEERING & LAND SURVEYING
85 SOUTH 200 EAST - VERNAL, UTAH 84078
(435) 789-1017

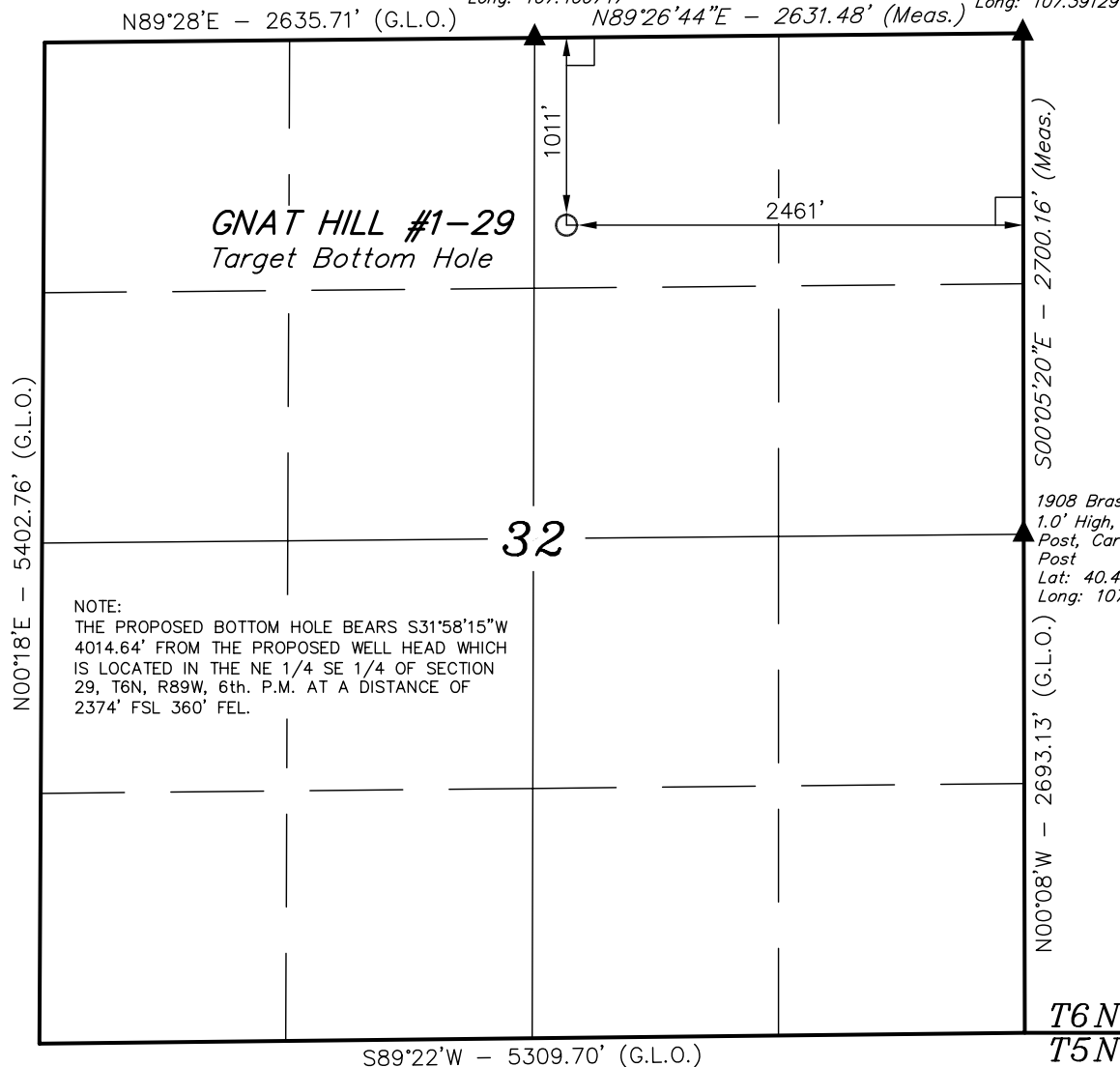
SCALE 1" = 1000'	DATE SURVEYED: 06-28-11	DATE DRAWN: 07-07-11
PARTY B.H. N.F. J.I.	REFERENCES G.L.O. PLAT	
WEATHER WARM	FILE SWEPI LP	

NAD 83 (TARGET BOTTOM HOLE)	
LATITUDE =	40°26'10.99" (40.436386)
LONGITUDE =	107°24'00.45" (107.400125)
NAD 27 (TARGET BOTTOM HOLE)	
LATITUDE =	40°26'11.08" (40.436411)
LONGITUDE =	107°23'58.23" (107.399508)

1908 Brass Cap,
0.7' High, Stones
Lat: 40.439156°
Long: 107.400747°

1908 Brass Cap,
1.3' High, Pile of
Stones, Carsonite
Post
Lat: 40.439233°
Long: 107.391297°

1908 Brass Cap,
1.0' High, Wood
Post, Carsonite
Post
Lat: 40.431825°
Long: 107.391269°



NOTE:
THE PROPOSED BOTTOM HOLE BEARS S31°58'15"W
4014.64' FROM THE PROPOSED WELL HEAD WHICH
IS LOCATED IN THE NE 1/4 SE 1/4 OF SECTION
29, T6N, R89W, 6th. P.M. AT A DISTANCE OF
2374' FSL 360' FEL.

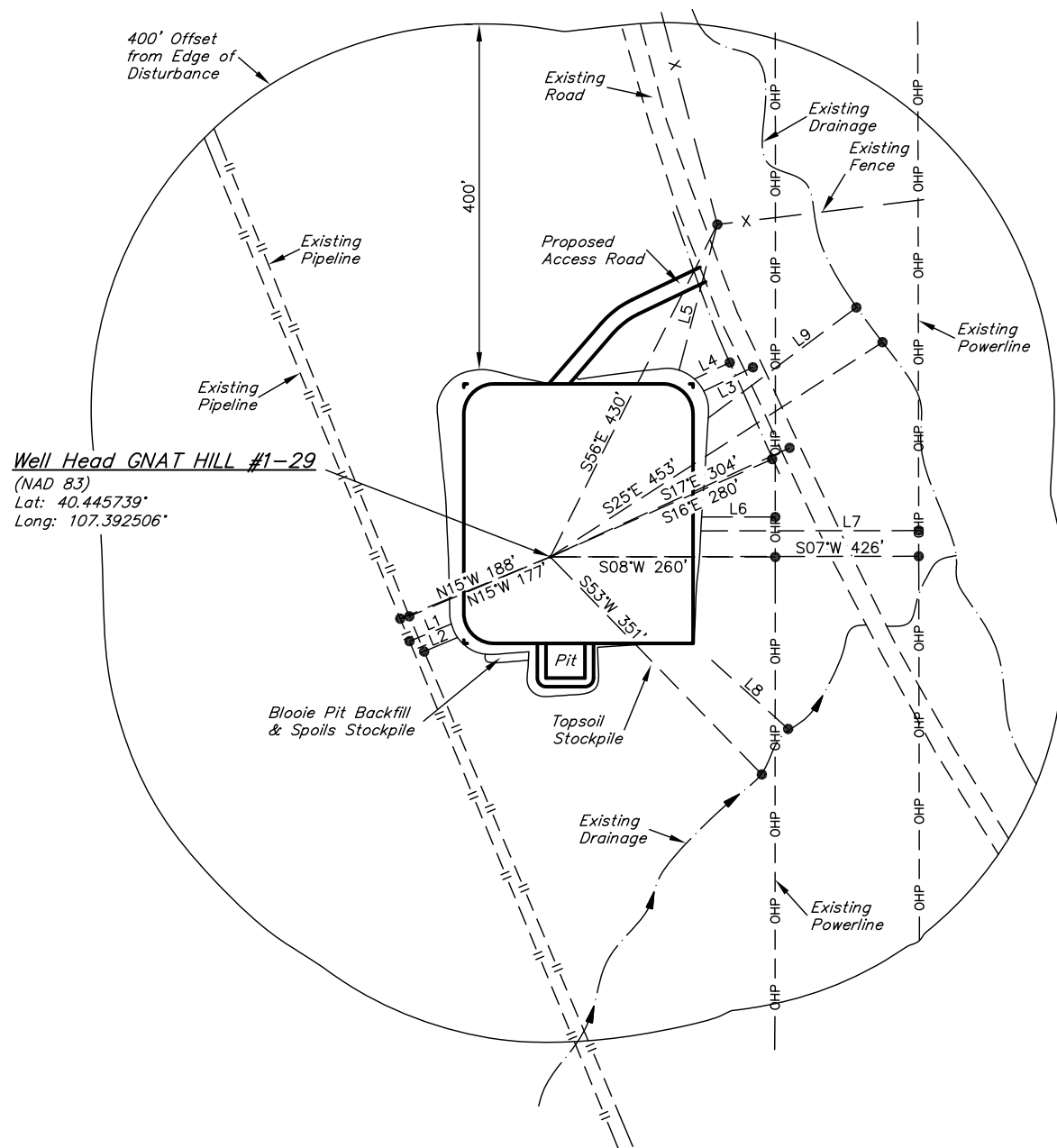
LEGEND:

- └─┘ = 90° SYMBOL
- = PROPOSED WELL HEAD.
- ▲ = SECTION CORNERS LOCATED.

SWEPI LP

ADDENDUM TO LEGAL PLAT FOR

GNAT HILL #1-29
SECTION 29, T6N, R89W, 6th. P.M.
2374' FSL 360' FEL



LINE TABLE		
LINE	DIRECTION	LENGTH
L1	N14°52'41"W	52.36'
L2	N15°22'02"W	41.88'
L3	S18°16'18"E	63.10'
L4	S17°29'22"E	45.09'
L5	S67°48'17"E	174.13'
L6	S07°30'57"W	85.08'
L7	S07°23'21"W	251.83'
L8	S49°26'25"W	118.72'
L9	S29°15'46"E	213.66'