

Schlumberger

Company: **Quicksilver Resources Inc**

Well: **Weber 32-04**

Field: **Bell Rock**

County: **Moffat**

State: **Colorado**

Schlumberger

Company: **Quicksilver Resources Inc**

Well: **Weber 32-04**

Field: **Bell Rock**

County: **Moffat**

State: **Colorado**

Schlumberger

Company: **Quicksilver Resources Inc**

Well: **Weber 32-04**

Field: **Bell Rock**

County: **Moffat**

State: **Colorado**

Schlumberger

Company: **Quicksilver Resources Inc**

Well: **Weber 32-04**

Field: **Bell Rock**

County: **Moffat**

State: **Colorado**

Schlumberger

Company: **Quicksilver Resources Inc**

Well: **Weber 32-04**

Field: **Bell Rock**

County: **Moffat**

State: **Colorado**

Schlumberger

Company: **Quicksilver Resources Inc**

Well: **Weber 32-04**

Field: **Bell Rock**

County: **Moffat**

State: **Colorado**

[illegible]

Logging Date				
Run Number				
Depth Driller				
Schlumberger Depth				
Bottom Log Interval				
Top Log Interval				
Casing Driller Size @ Depth		@		
Casing Schlumberger				
Bit Size				
Type Fluid In Hole				
Density				
Fluid Loss	PH			
Source Of Sample				
RM @ Measured Temperature		@		
RMF @ Measured Temperature		@		
RMC @ Measured Temperature		@		
Source RMF	RMF			
RM @ MRT	RMF @ MRT	@		@
Maximum Recorded Temperatures				
Circulation Stopped	Time			
Logger On Bottom	Time			
Unit Number	Location			
Recorded By				
Witnessed By				

Rig: DHS 6	
Crew: Derrick Hunter & Ed Ponce	

RUN 1 SERVICE ORDER #: PROGRAM VERSION: FLUID LEVEL:			RUN 2 SERVICE ORDER #: PROGRAM VERSION: FLUID LEVEL:		
LOGGED INTERVAL	START	STOP	LOGGED INTERVAL	START	STOP

[illegible]

SURFACE EQUIPMENT	
WITM (CTS)-A GSR-U/Y NCT-B CNB-AB	NCS-VB

DOWNHOLE EQUIPMENT

HILTI-CTS

HGNS-B

HMCA

TCC-B

HGNH

NLS-KL

NSR-F

HACCS 749

HCNT

HGR

HRCC-B

HRMS-B

HRGD-B

GLS-VJ 5363

MCFL Device

HILT Nucl. LS

HILT Nucl. SS

HILT Nucl. BS

AIT-H

AHIS-BA 216

AHRM-A

NPV-N

HGNS HTEM

HMCA

TelStatus

CTEM

HGNS Gamm

HGNS Neut

HGNS Neut

HGNS sens

HRCC cart

MCFL

HILT cali

HRDD-LS

HRDD-SS

HRDD-BS

37.6

36.9

37.6

31.1

30.6

28.2

24.2

18.8

18.3

17.9

Induction
Temperatu
Power Sup

7.9

SP SENSOR
HTEN HMAS
Accelerom HV
Mud Resis
Tension

0.1

0.0

TOOL ZERO

MAXIMUM STRING DIAMETER 4.63 IN
MEASUREMENTS RELATIVE TO TOOL ZERO
ALL LENGTHS IN FEET

Production String

(in) (ft)
OD ID MD

Well Schematic

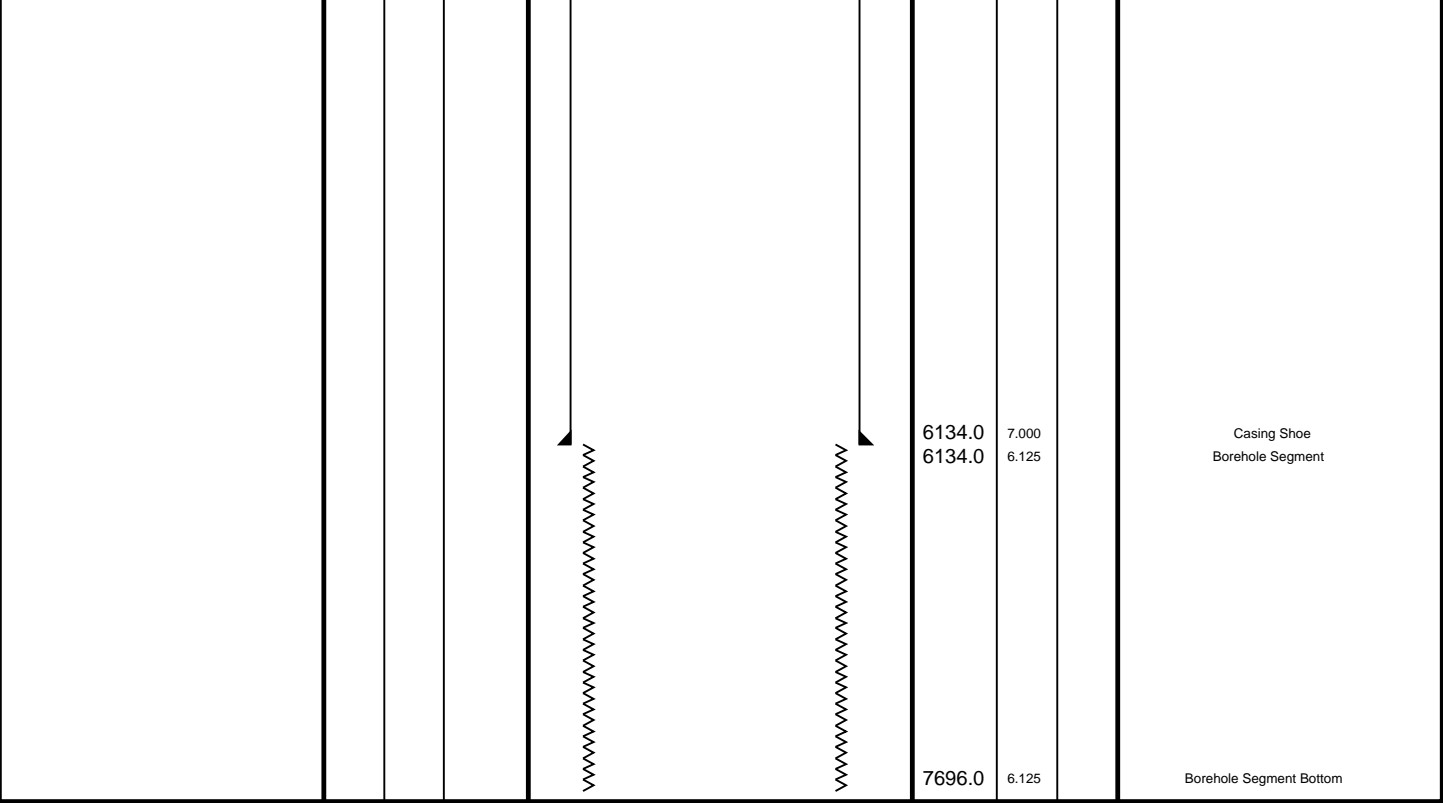
(ft) (in)
MD OD ID

Casing String

0.0

7.000

Casing String



Input DLIS Files							
DEFAULT	AIT_TLD_MCFL_CNL_011LUP	FN:10	PRODUCER	25-Jun-2011 21:09	7716.0 FT	6046.5 FT	

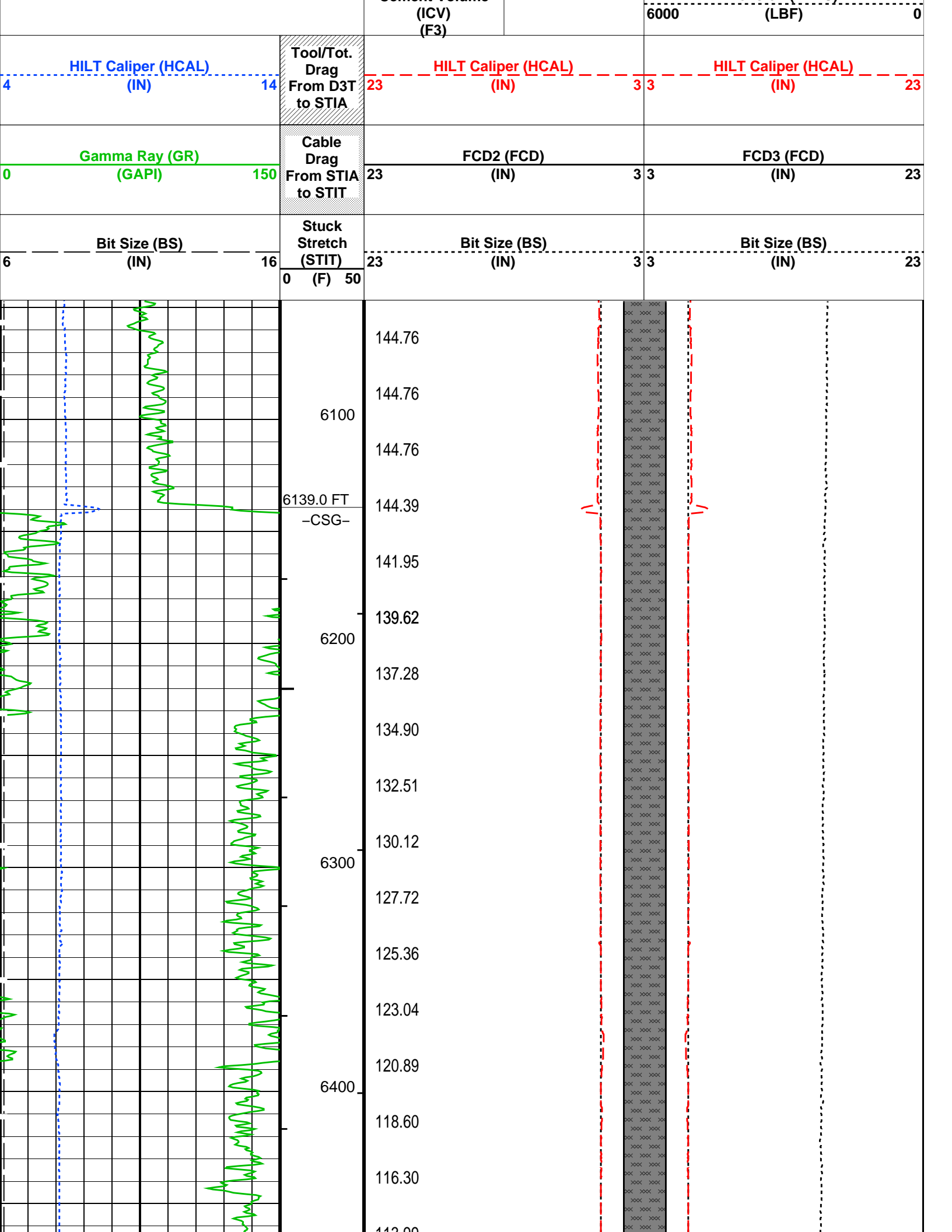
Output DLIS Files							
DEFAULT	AIT_TLD_MCFL_CNL_016PUP	FN:14	PRODUCER	25-Jun-2011 21:52	7716.0 FT	6046.5 FT	

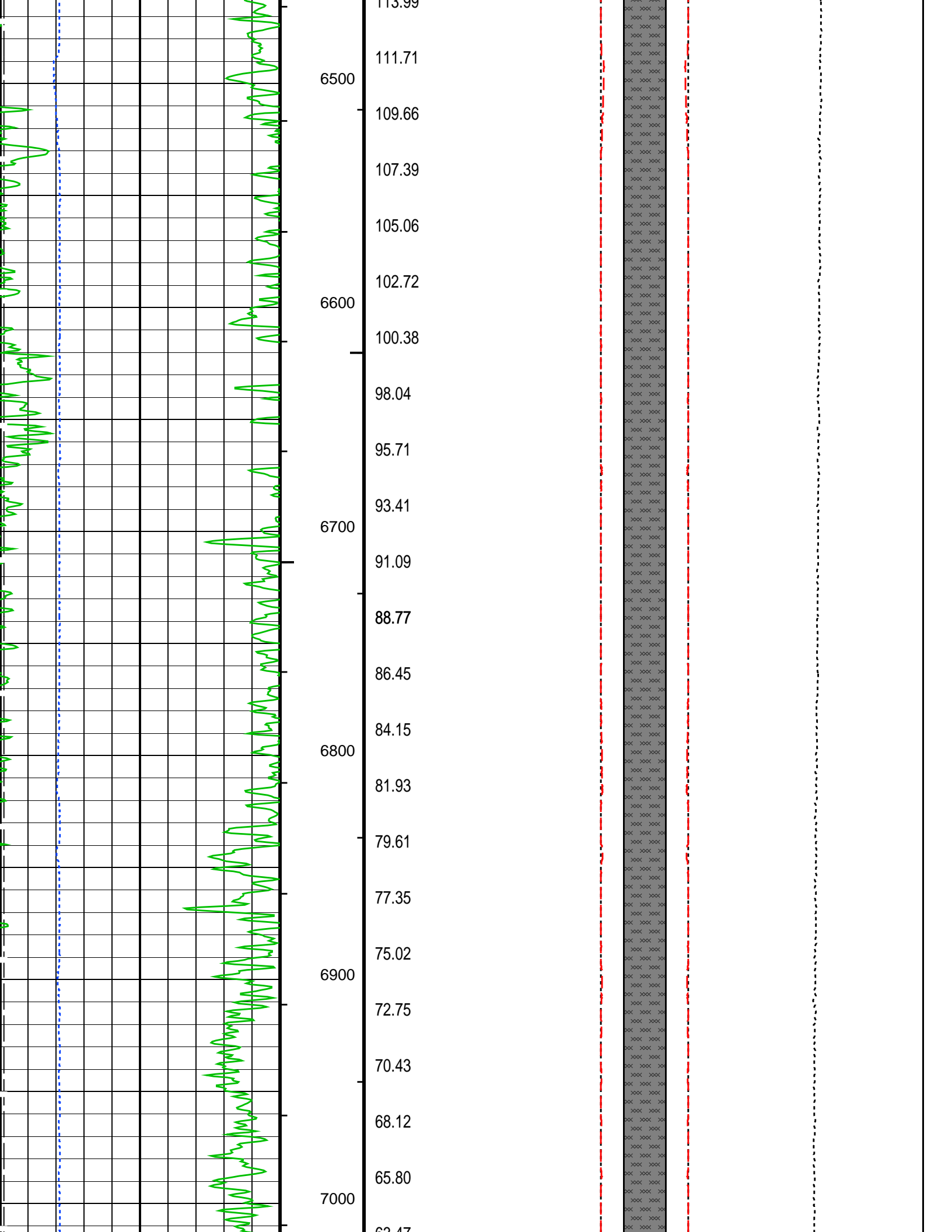
Integrated Hole/Cement Volume Summary							
Hole Volume = 316.89 F3							
Cement Volume = 144.76 F3 (assuming 4.50 IN casing O.D.)							
Computed from 7697.0 FT to 6139.0 FT using data channel(s) HCAL							

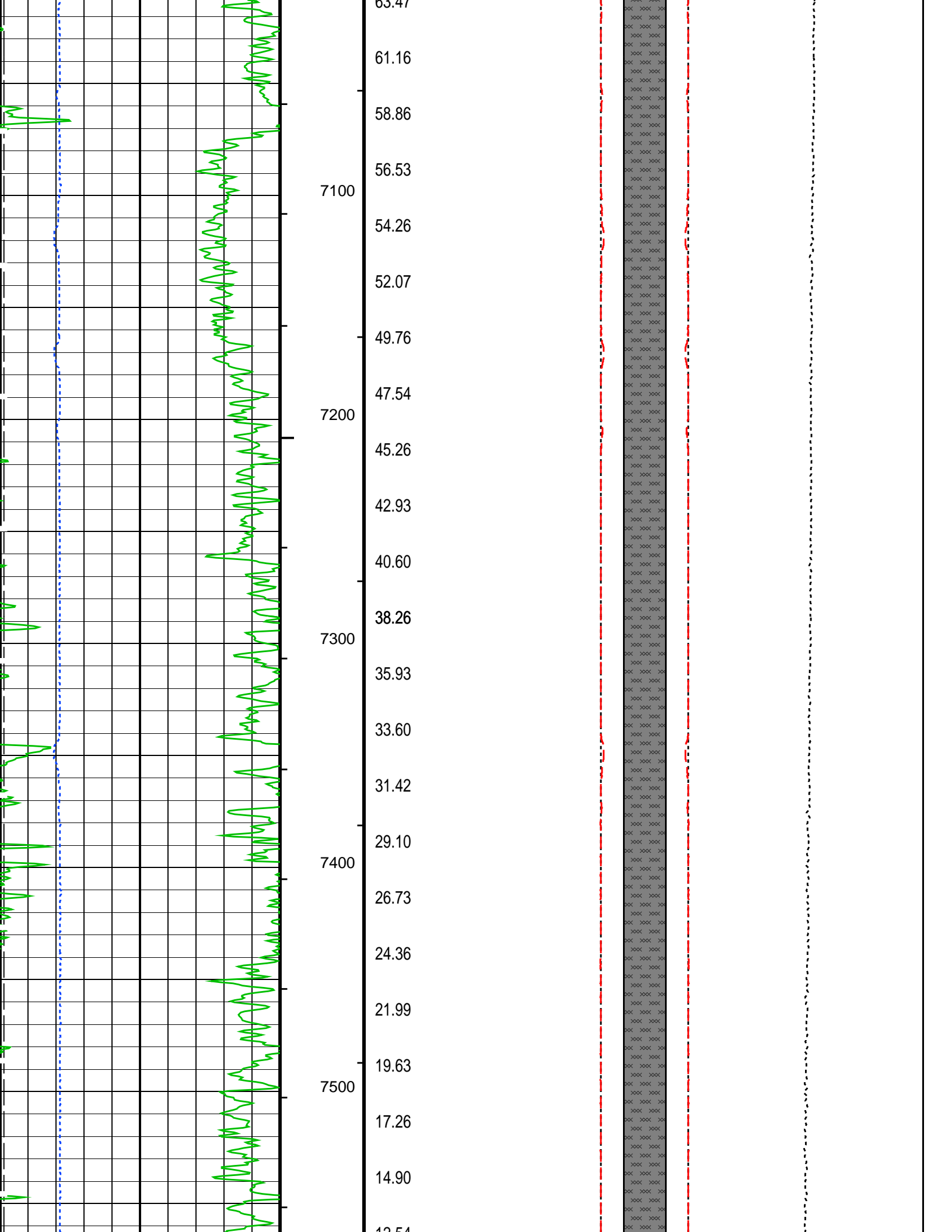
OP System Version: 18C0-147							
HILTB-CTS	18C0-147						

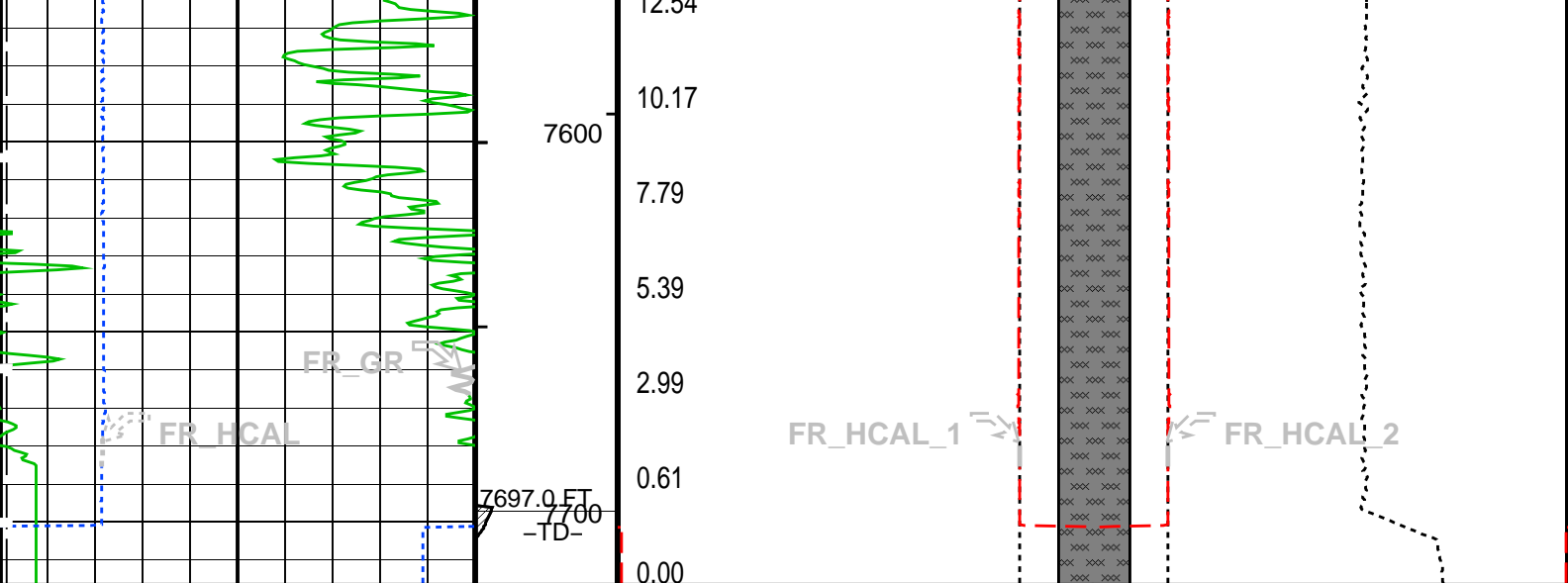
PIP SUMMARY							
└ Integrated Hole Volume Minor Pip Every 10 F3							
└ Integrated Hole Volume Major Pip Every 100 F3							
└ Integrated Cement Volume Minor Pip Every 10 F3							
└ Integrated Cement Volume Major Pip Every 100 F3							
Time Mark Every 60 S							

				FCD2 - FCD3 From FCD2 to FCD3			
Cement Volume				Tension (TENS)			









Bit Size (BS) (IN)		Stuck Stretch (STIT)	Bit Size (BS) (IN)		Bit Size (BS) (IN)	
6	16	0 (F) 50	23	3 3	23	23
Gamma Ray (GR) (GAPI)		Cable Drag From STIA to STIT	FCD2 (FCD) (IN)		FCD3 (FCD) (IN)	
0	150		23	3 3	23	23
HILT Caliper (HCAL) (IN)		Tool/Tot. Drag From D3T to STIA	HILT Caliper (HCAL) (IN)		HILT Caliper (HCAL) (IN)	
4	14		23	3 3	23	23
			Cement Volume (ICV) (F3)		Tension (TENS) (LBF)	
				6000	0	
FCD2 – FCD3 From FCD2 to FCD3						

PIP SUMMARY

- └ Integrated Hole Volume Minor Pip Every 10 F3
- └ Integrated Hole Volume Major Pip Every 100 F3
 - └ Integrated Cement Volume Minor Pip Every 10 F3
 - └ Integrated Cement Volume Major Pip Every 100 F3

Time Mark Every 60 S

Parameters

DLIS Name	Description	Value
FCD	HOLEV: Integrated Hole/Cement Volume	4.5 IN
HVCS	Future Casing (Outer) Diameter	AUTOMATIC
STI	Integrated Hole Volume Caliper Selection	
LBFR	STI: Stuck Tool Indicator	TDL
STKT	Trigger for MAXIS First Reading Label	2.5 FT
TDD	STI Stuck Threshold	7696.00 FT
TDL	Total Depth - Driller	7697.00 FT
	Total Depth - Logger	
	System and Miscellaneous	
BS	Bit Size	6.125 IN
DO	Depth Offset for Playback	0.0 FT
DORL	Depth Offset for Repeat Analysis	0.0 FT
PP	Playback Processing	RECOMPUTE
TD	Total Depth	7697 FT

Format: G_DCAL_FORMAT

Vertical Scale: 2" per 100'

Graphics File Created: 25-Jun-2011 21:52

OP System Version: 18C0-147

Input DLIS Files

DEFAULT	AIT_TLD_MCFL_CNL_011LUP	FN:10	PRODUCER	25-Jun-2011 21:09	7716.0 FT	6046.5 FT
---------	-------------------------	-------	----------	-------------------	-----------	-----------

Output DLIS Files

DEFAULT	AIT_TLD_MCFL_CNL_016PUP	FN:14	PRODUCER	25-Jun-2011 21:52
---------	-------------------------	-------	----------	-------------------

Company: **Quicksilver Resources Inc**

Schlumberger

Well: **Weber 32-04**

Field: **Bell Rock**

County: **Moffat**

State: **Colorado**

Platform Express

Caliper Log

Cement Volume