

1625 Broadway
Suite 2000
Denver, CO 80202

Tel: 303.228.4000
Fax: 303.228.4280

www.nobleenergyinc.com



August 4, 2011

Colorado Oil and Gas Conservation Commission
The Chancery Building
1120 Lincoln Street, Suite 801
Denver, CO 80203
Attn: Mr. David Neslin, Director

RE: State C16-20D
Codell/Niobrara New Drill
Township 4 North, Range 64 West, 6th P.M.
Section 16: NW/4SW/4: 1788' FSL & 907' FWL (Surface Location)
Section 16: NW/4SW/4: 2550' FSL & 1200' FWL (Bottom Hole Location)
Weld County, Colorado

Mr. Neslin:

Noble Energy, Inc. ("NEI") is planning to drill the captioned boundary well in accordance with the provisions of COGCC Rule 318A.e.

NEI's proposed wellbore spacing unit consists of the S/2NW/4, N/2SW/4, T4N, R64W, creating a 160-acre wellbore spacing unit. NEI is the only owner within the proposed wellbore spacing unit, therefore NEI hereby attests that no notice letters are required under COGCC Rule 318A.e.(6).

Enclosed are copies of the following documents to assist you in your review and approval of NEI's proposed APD for the captioned well:

- Plat illustrating the proposed wellbore spacing unit and number of Codell/Niobrara wells located within the existing 160-acre governmental quarter section(s) (SW/4) to be less than eight (8) in accordance with COGCC Rule 318A.f.
- Plat illustrating proposed wellbore spacing unit on existing location plat.

Thank you for your attention to the enclosed. NEI respectfully requests that the COGCC review the enclosed information and approve the Application for Permit to Drill the captioned well.

Sincerely,

Justin Garrett
Regulatory Specialist
Noble Energy Inc.

The map displays the State C16-20D area, which is outlined by a thick blue border. The area is divided into several sections by dashed green lines. The central section is labeled "STATE C16-20D". The map includes various state locations, each marked with a yellow circle and a label. The locations are distributed across the map, with some labeled "STATE 16-414", "STATE 16-514", "STATE 16-614", "STATE 16-714", "STATE 16-814", "STATE 16-914", "STATE 16-1014", "STATE 16-1114", "STATE 16-1214", "STATE 16-1414", "STATE 16-1514", "STATE 16-1614", "STATE 16-1714", "STATE 16-1814", "STATE 16-1914", "STATE 16-2014", "STATE 16-2114", "STATE 16-2214", "STATE 16-2314", "STATE 16-2414", "STATE 16-2514", "STATE 16-2614", "STATE 16-2714", "STATE 16-2814", "STATE 16-2914", "STATE 16-3014", "STATE 16-3114", "STATE 16-3214", "STATE 16-3314", "STATE 16-3414", "STATE 16-3514", "STATE 16-3614", "STATE 16-3714", "STATE 16-3814", "STATE 16-3914", "STATE 16-4014", "STATE 16-4114", "STATE 16-4214", "STATE 16-4314", "STATE 16-4414", "STATE 16-4514", "STATE 16-4614", "STATE 16-4714", "STATE 16-4814", "STATE 16-4914", "STATE 16-5014", "STATE 16-5114", "STATE 16-5214", "STATE 16-5314", "STATE 16-5414", "STATE 16-5514", "STATE 16-5614", "STATE 16-5714", "STATE 16-5814", "STATE 16-5914", "STATE 16-6014", "STATE 16-6114", "STATE 16-6214", "STATE 16-6314", "STATE 16-6414", "STATE 16-6514", "STATE 16-6614", "STATE 16-6714", "STATE 16-6814", "STATE 16-6914", "STATE 16-7014", "STATE 16-7114", "STATE 16-7214", "STATE 16-7314", "STATE 16-7414", "STATE 16-7514", "STATE 16-7614", "STATE 16-7714", "STATE 16-7814", "STATE 16-7914", "STATE 16-8014", "STATE 16-8114", "STATE 16-8214", "STATE 16-8314", "STATE 16-8414", "STATE 16-8514", "STATE 16-8614", "STATE 16-8714", "STATE 16-8814", "STATE 16-8914", "STATE 16-9014", "STATE 16-9114", "STATE 16-9214", "STATE 16-9314", "STATE 16-9414", "STATE 16-9514", "STATE 16-9614", "STATE 16-9714", "STATE 16-9814", "STATE 16-9914", "STATE 16-10014".

 Bottom Hole Location

The governmental ¼ Section has less than 8 bottom hole wells producing from the Codell, Niobrara, and J-Sand formations.

DALEY LAND SURVEYING, INC.

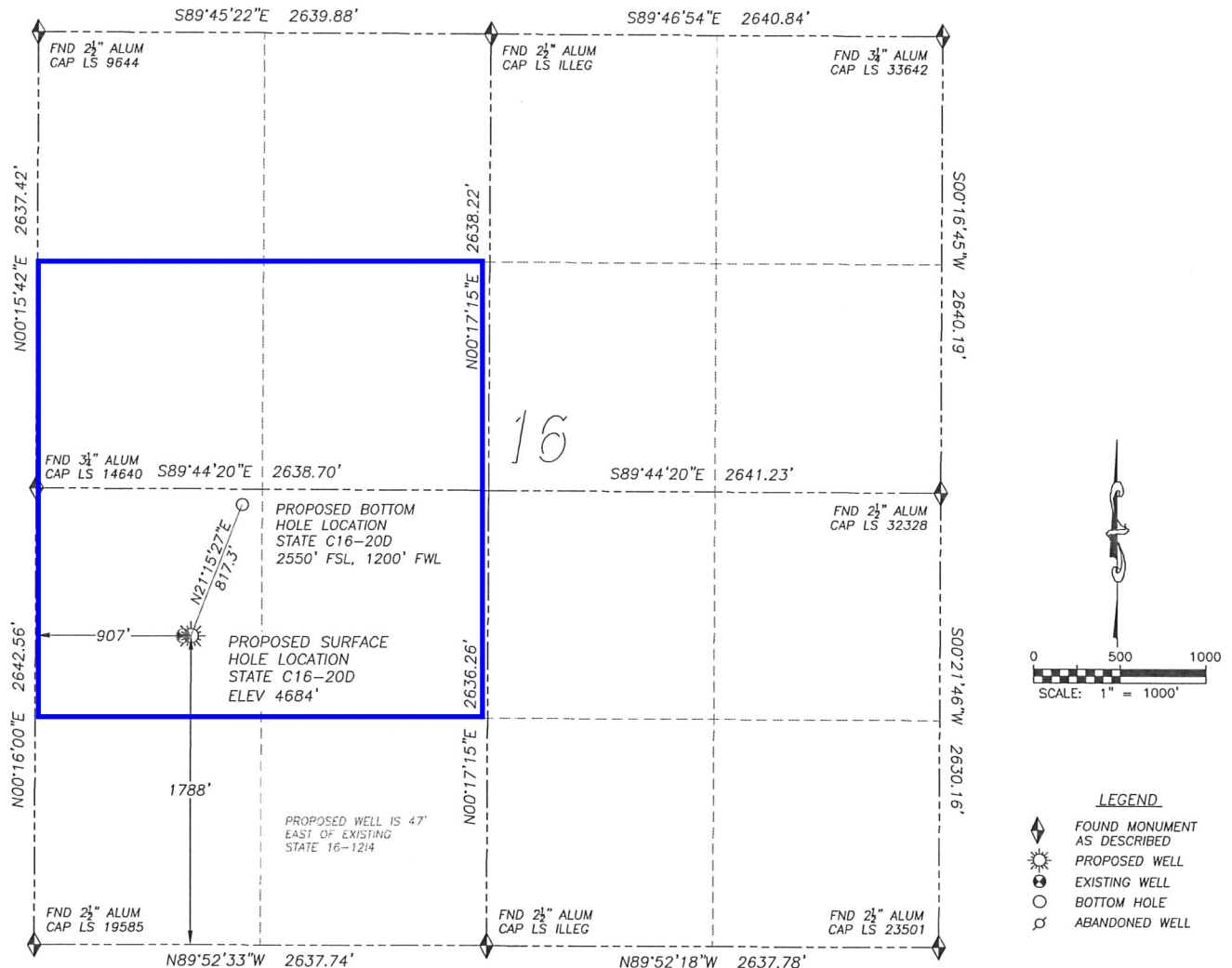
PARKER, CO. 80134

303 953 9841

WELL LOCATION CERTIFICATE

STATE C16-20D

SECTION 16, TOWNSHIP 4 NORTH, RANGE 64 WEST OF THE 6TH PRINCIPAL MERIDIAN

**NAD 83 LATITUDE AND LONGITUDE**

STATE C16-20D SURFACE HOLE:

LATITUDE: N40.31008°

LONGITUDE: W104.56186°

ELEVATION: 4684'

FOOTAGE: 1788' FSL, 907' FWL

PDOP: 2.2

QTR/QTR: NW4/SW4

PROP LINE: 412'± EAST

BOTTOM HOLE:

LATITUDE: N40.31217°

LONGITUDE: W104.56080°

FOOTAGE: 2550' FSL, 1200' FWL

NEAREST EXISTING WELL:

STATE 16-1214 SURFACE HOLE

LATITUDE: N40.31009°

LONGITUDE: W104.56203°

ELEVATION: 4684'

47' WEST

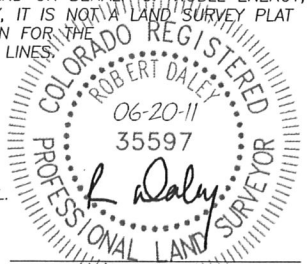
IN ACCORDANCE WITH A REQUEST FROM BRIAN DeROSE OF NOBLE ENERGY INC., DALEY LAND SURVEYING, INC. HAS DETERMINED THE SURFACE LOCATION OF THE STATE C16-20D WELL TO BE 1788' FSL, 907' FWL, AS MEASURED AT NINETY (90) DEGREES FROM THE SECTION LINES OF SECTION 16, TOWNSHIP 4 NORTH, RANGE 64 WEST OF THE 6TH PRINCIPAL MERIDIAN, WELD COUNTY, COLORADO. THE BOTTOM HOLE LOCATION, PROVIDED BY THE CLIENT, IS TO BE 2550' FSL, 1200' FWL.

I HEREBY CERTIFY THAT THIS WELL LOCATION CERTIFICATE WAS PREPARED BY ME OR UNDER MY DIRECT SUPERVISION, THAT THE WORK WAS COMPLETED ON 6/17/2011 FOR AND ON BEHALF OF NOBLE ENERGY, INC., AND THAT THIS MAP DOES NOT REPRESENT A BOUNDARY SURVEY, IT IS NOT A LAND SURVEY PLAT OR AN IMPROVEMENT SURVEY PLAT AND IT IS NOT TO BE RELIED UPON FOR THE ESTABLISHMENT OF FENCE, BUILDING OR OTHER FUTURE IMPROVEMENT LINES.

NOTES:

- 1) BEARINGS FOR THIS MAP ARE ASSUMED AND BASED UPON GPS OBSERVATIONS MADE BETWEEN MONUMENTS LOCATED AT THE SOUTHWEST CORNER AND WEST QUARTER CORNER OF SECTION 16, T.4N., R.64W.
- 2) HORIZONTAL DATUM IS NAD83.
- 3) VERTICAL DATUM IS NAVD88. ELEVATIONS ARE DERIVED FROM GPS OBSERVATIONS PROCESSED THROUGH OPUS, UTILIZING THE GEOID09 MODEL.
- 4) SEE LOCATION DRAWING FOR VISIBLE IMPROVEMENTS WITHIN 600' OF PROPOSED SURFACE HOLE LOCATION.
- 5) SURFACE USE: AGRICULTURAL.

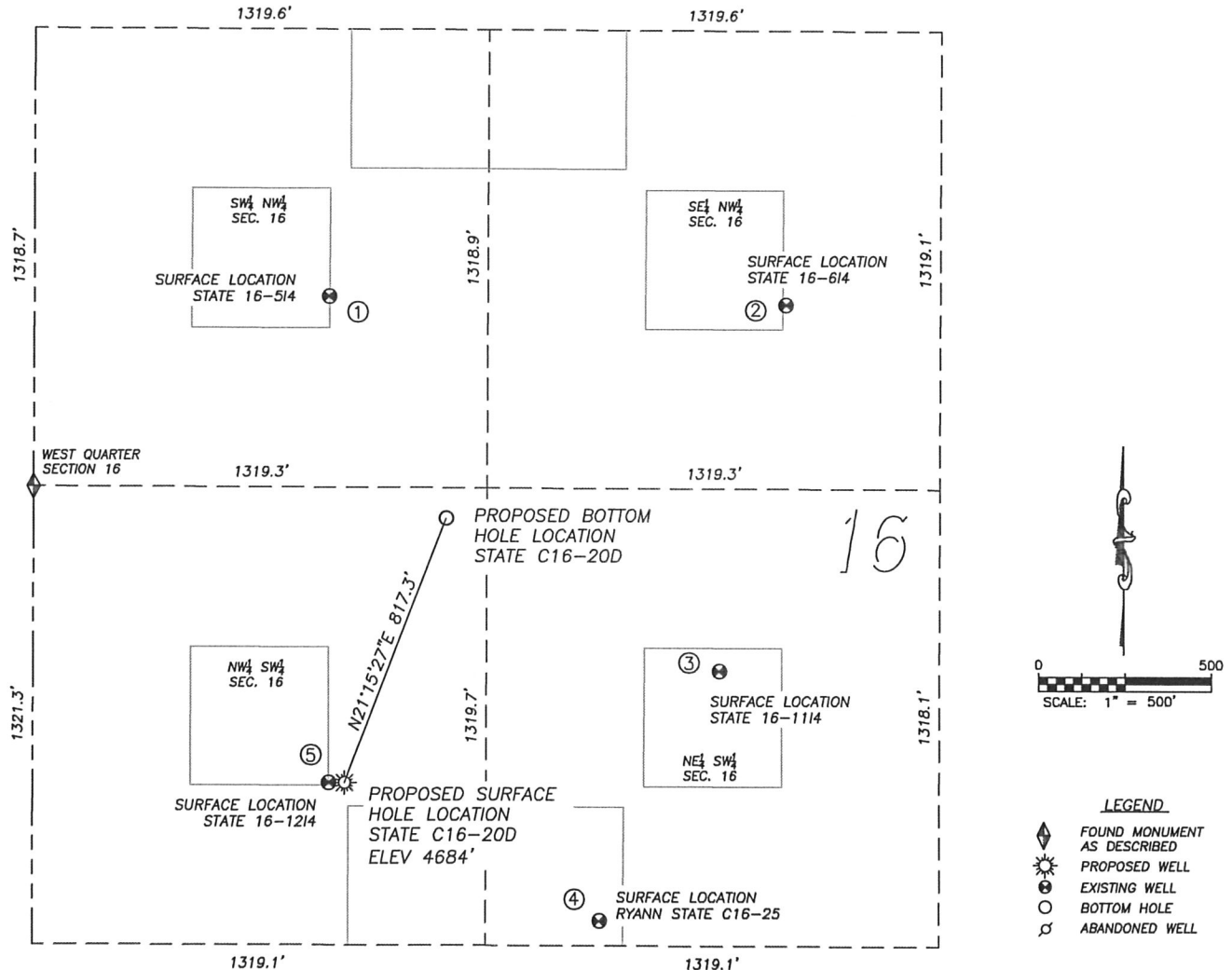
NOTICE: According to Colorado law you MUST commence any legal action based upon any defect in this W.L.C. within three years after you first discover such defect. In no event may any action based upon any such defect in this W.L.C. be commenced more than ten years from the date of the certification shown hereon.



FOR AND ON BEHALF OF
DALEY LAND SURVEYING, INC.,
Robert Daley, PLS 35597

SITE SKETCH STATE C16-20D

SECTION 16, TOWNSHIP 4 NORTH, RANGE 64 WEST OF THE 6TH PRINCIPAL MERIDIAN



- ① STATE 16-514
SW/NW SEC. 16
2088' FNL, 857' FWL
726' NW OF PROPOSED
BOTTOM HOLE LOCATION
LAT. N40.31393°
LONG. W104.56202°
EL: 4689'
PDOP 2.0

② STATE 16-614
SE/NW SEC. 16
2108' FNL, 2191' FWL
1187' NE OF PROPOSED
BOTTOM HOLE LOCATION
LAT. N40.31386°
LONG. W104.55725°
EL: 4676'
PDOP 2.1

③ STATE 16-1114
NE/SW SEC. 16
2111' FSL, 1997' FWL
909' SE OF PROPOSED
BOTTOM HOLE LOCATION
LAT. N40.31097°
LONG. W104.55795°
EL: 4687'
PDOP 2.6

④ RYANN STATE 16-25
NE/SW SEC. 16
1391' FSL, 1649' FWL
1242' SE OF PROPOSED
BOTTOM HOLE LOCATION
LAT. N40.30899°
LONG. W104.55921°
EL: 4682'
PDOP 2.3

⑤ STATE 16-1214
NW/SW SEC. 16
1788' FSL, 860' FWL
835' SW OF PROPOSED
BOTTOM HOLE LOCATION
LAT. N40.31009°
LONG. W104.56203°
EL: 4684'
PDOP 2.2

NOTES:
1) THIS DOES NOT REPRESENT A BOUNDARY SURVEY
2) THE LATITUDES AND LONGITUDES SHOWN ARE REFERENCED TO NAD83
3) DATUM FOR ELEVATION IS NAVD88. ELEVATIONS ARE DERIVED FROM GPS-RTK OBSERVATIONS PROCESSED THROUGH OPUS, UTILIZING THE GEOID09 MODEL.

