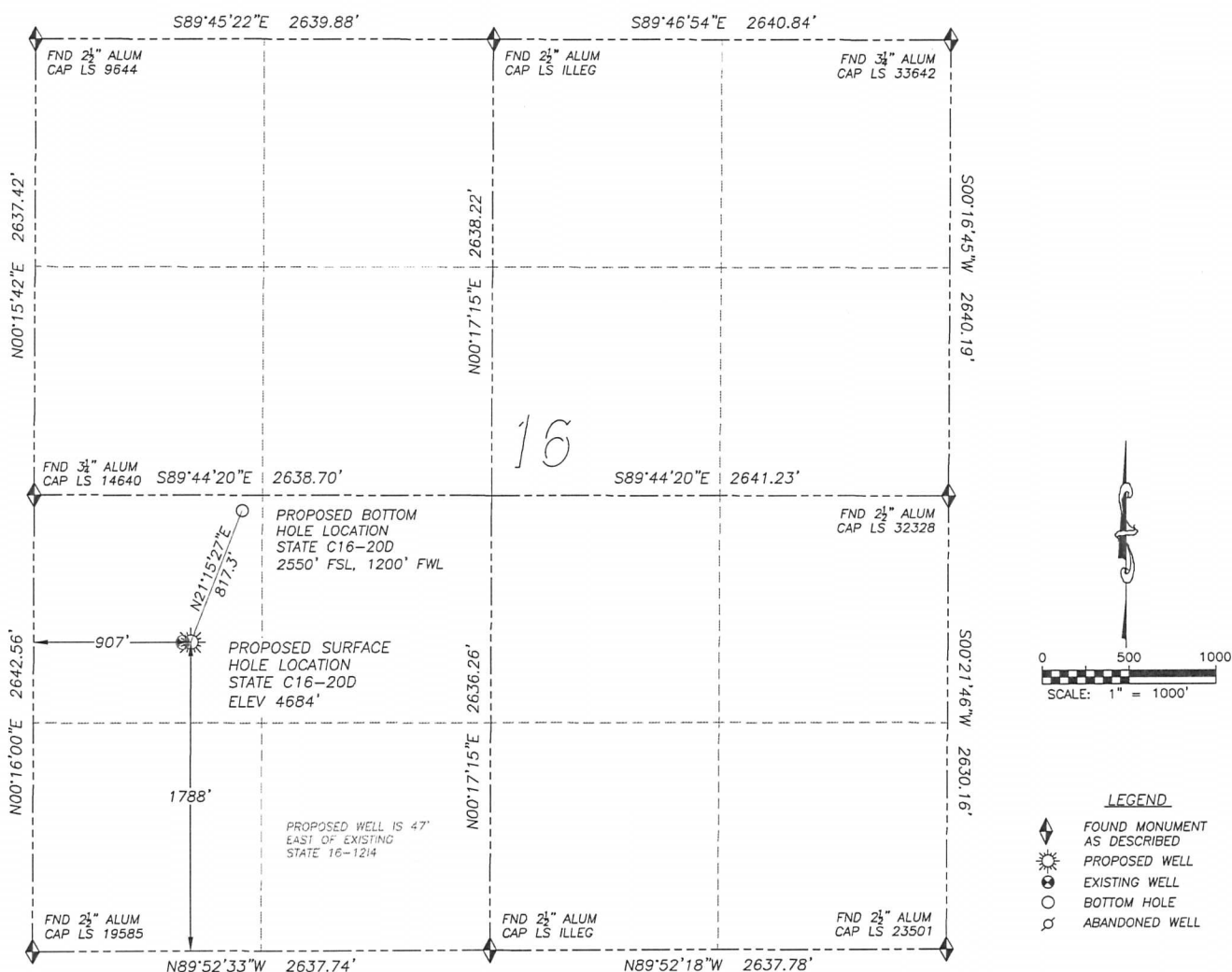


WELL LOCATION CERTIFICATE STATE C16-20D

SECTION 16, TOWNSHIP 4 NORTH, RANGE 64 WEST OF THE 6TH PRINCIPAL MERIDIAN



NAD 83 LATITUDE AND LONGITUDE

STATE C16-20D SURFACE HOLE:

LATITUDE: N40.31008°
LONGITUDE: W104.56186°
ELEVATION: 4684'
FOOTAGE: 1788' FSL, 907' FWL
PDOP: 2.2
QTR/QTR: NW4/SW4
PROP LINE: 412'± EAST

BOTTOM HOLE:

LATITUDE: N40.31217°
LONGITUDE: W104.56080°
FOOTAGE: 2550' FSL, 1200' FWL

NEAREST EXISTING WELL:

STATE 16-1214 SURFACE HOLE
LATITUDE: N40.31009°
LONGITUDE: W104.56203°
ELEVATION: 4684'
47' WEST

IN ACCORDANCE WITH A REQUEST FROM BRIAN DeROSE OF NOBLE ENERGY INC., DALEY LAND SURVEYING, INC. HAS DETERMINED THE SURFACE LOCATION OF THE STATE C16-20D WELL TO BE 1788' FSL, 907' FWL, AS MEASURED AT NINETY (90) DEGREES FROM THE SECTION LINES OF SECTION 16, TOWNSHIP 4 NORTH, RANGE 64 WEST OF THE 6TH PRINCIPAL MERIDIAN, WELD COUNTY, COLORADO. THE BOTTOM HOLE LOCATION, PROVIDED BY THE CLIENT, IS TO BE 2550' FSL, 1200' FWL.

I HEREBY CERTIFY THAT THIS WELL LOCATION CERTIFICATE WAS PREPARED BY ME OR UNDER MY DIRECT SUPERVISION, THAT THE WORK WAS COMPLETED ON 6/17/2011 FOR AND ON BEHALF OF NOBLE ENERGY, INC., AND THAT THIS MAP DOES NOT REPRESENT A BOUNDARY SURVEY, IT IS NOT A LAND SURVEY PLAT OR AN IMPROVEMENT SURVEY PLAT AND IT IS NOT TO BE RELIED UPON FOR THE ESTABLISHMENT OF FENCE, BUILDING OR OTHER FUTURE IMPROVEMENT LINES.

NOTES:

- 1) BEARINGS FOR THIS MAP ARE ASSUMED AND BASED UPON GPS OBSERVATIONS MADE BETWEEN MONUMENTS LOCATED AT THE SOUTHWEST CORNER AND WEST QUARTER CORNER OF SECTION 16, T.4N., R.64W.
- 2) HORIZONTAL DATUM IS NAD83.
- 3) VERTICAL DATUM IS NAVD88. ELEVATIONS ARE DERIVED FROM GPS OBSERVATIONS PROCESSED THROUGH OPUS, UTILIZING THE GEOID09 MODEL.
- 4) SEE LOCATION DRAWING FOR VISIBLE IMPROVEMENTS WITHIN 600' OF PROPOSED SURFACE HOLE LOCATION.
- 5) SURFACE USE: AGRICULTURAL.

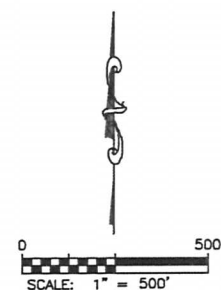
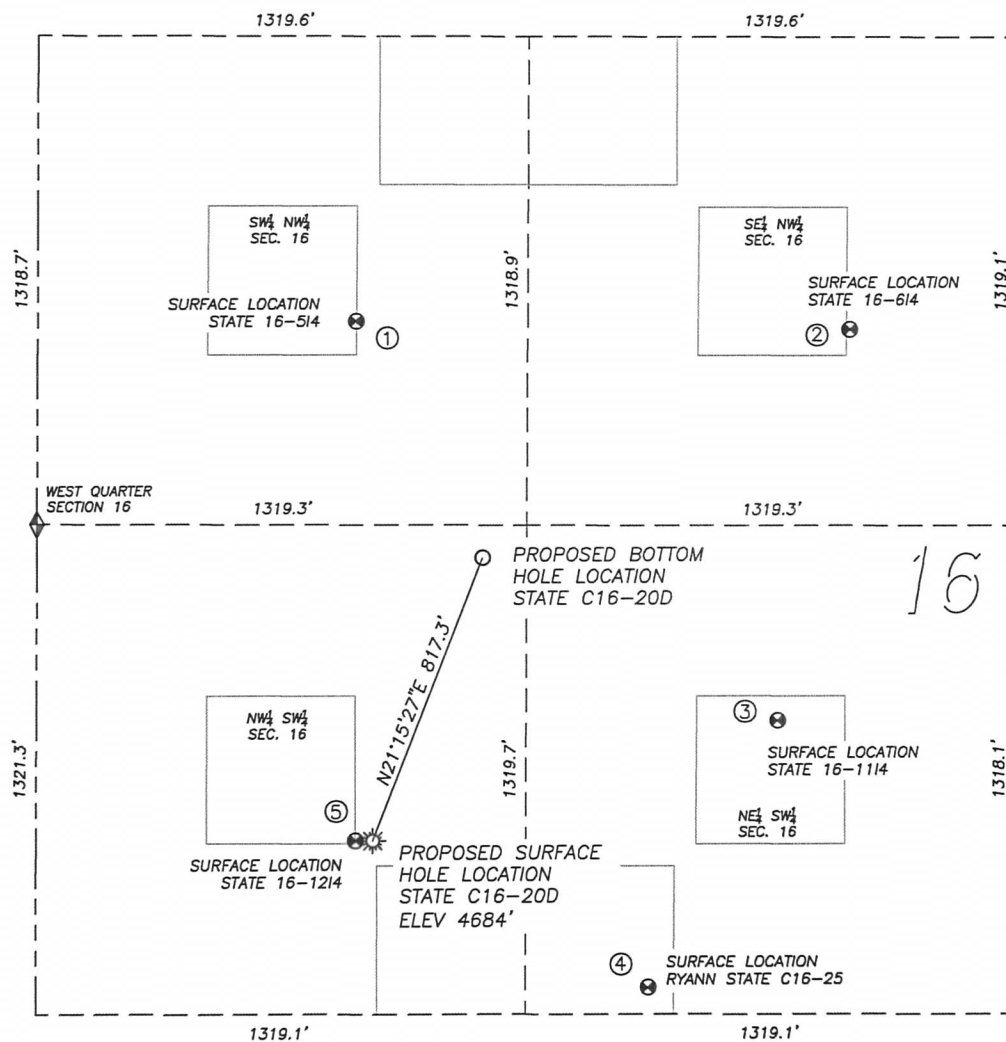
NOTICE: According to Colorado law you MUST commence any legal action based upon any defect in this W.L.C. within three years after you first discover such defect. In no event may any action based upon any such defect in this W.L.C. be commenced more than ten years from the date of the certification shown herein.








FOR AND ON BEHALF OF
DALEY LAND SURVEYING INC.,
Robert Daley, PLS 35597

SITE SKETCH STATE C16-20D

SECTION 16, TOWNSHIP 4 NORTH, RANGE 64 WEST OF THE 6TH PRINCIPAL MERIDIAN



LEGEND

-  FOUND MONUMENT
 AS DESCRIBED
 PROPOSED WELL
 EXISTING WELL
 BOTTOM HOLE
 ABANDONED WELL

- ① STATE 16-514
SW/NW SEC. 16
2088' FNL, 857' FWL
726' NW OF PROPOSED
BOTTOM HOLE LOCATION
LAT. N40.31393'
LONG. W104.56202'
EL: 4689'
PDOP 2.0

② STATE 16-614
SE/NW SEC. 16
2108' FNL, 2191' FWL
1167' NE OF PROPOSED
BOTTOM HOLE LOCATION
LAT. N40.31386'
LONG. W104.55725'
EL: 4676'
PDOP 2.1

③ STATE 16-1114
NE/SW SEC. 16
2111' FSL, 1997' FWL
909' SE OF PROPOSED
BOTTOM HOLE LOCATION
LAT. N40.31097'
LONG. W104.55795'
EL: 4687'
PDOP 2.6

④ RYANN STATE 16-25
NE/SW SEC. 16
1391' FSL, 1649' FWL
1242' SE OF PROPOSED
BOTTOM HOLE LOCATION
LAT. N40.30899'
LONG. W104.55921'
EL: 4682'
PDOP 2.3

⑤ STATE 16-1214
NW/SW SEC. 16
1788' FSL, 860' FWL
835' SW OF PROPOSED
BOTTOM HOLE LOCATION
LAT. N40.31009'
LONG. W104.56203'
EL: 4684'
PDOP 2.2

NOTES:
1) THIS DOES NOT REPRESENT A
BOUNDARY SURVEY
2) THE LATITUDES AND LONGITUDES
SHOWN ARE REFERENCED TO
NAD83
3) DATUM FOR ELEVATION IS NAVD88.
ELEVATIONS ARE DERIVED FROM
GPS-RTK OBSERVATIONS
PROCESSED THROUGH OPUS,
UTILIZING THE GEOID09 MODEL.

