



End of Well Report

Prepared for



Burckle A14

May 24, 2011

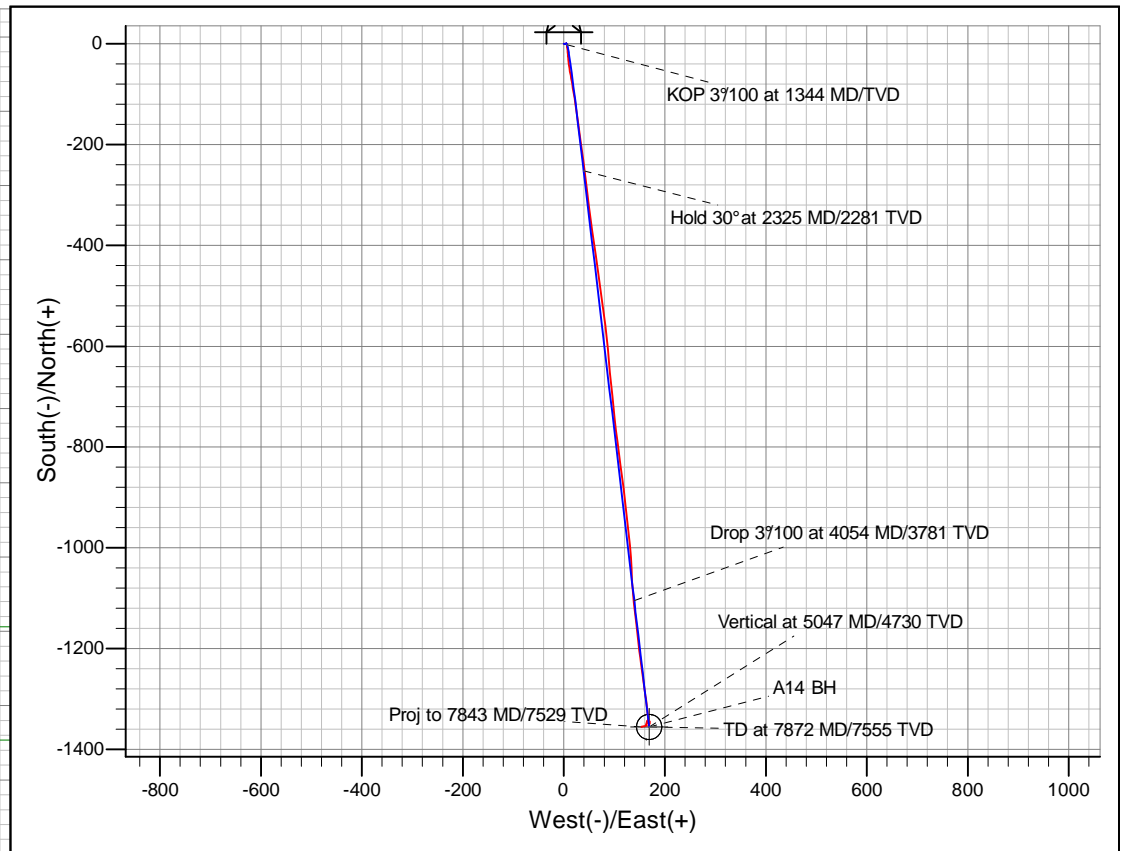
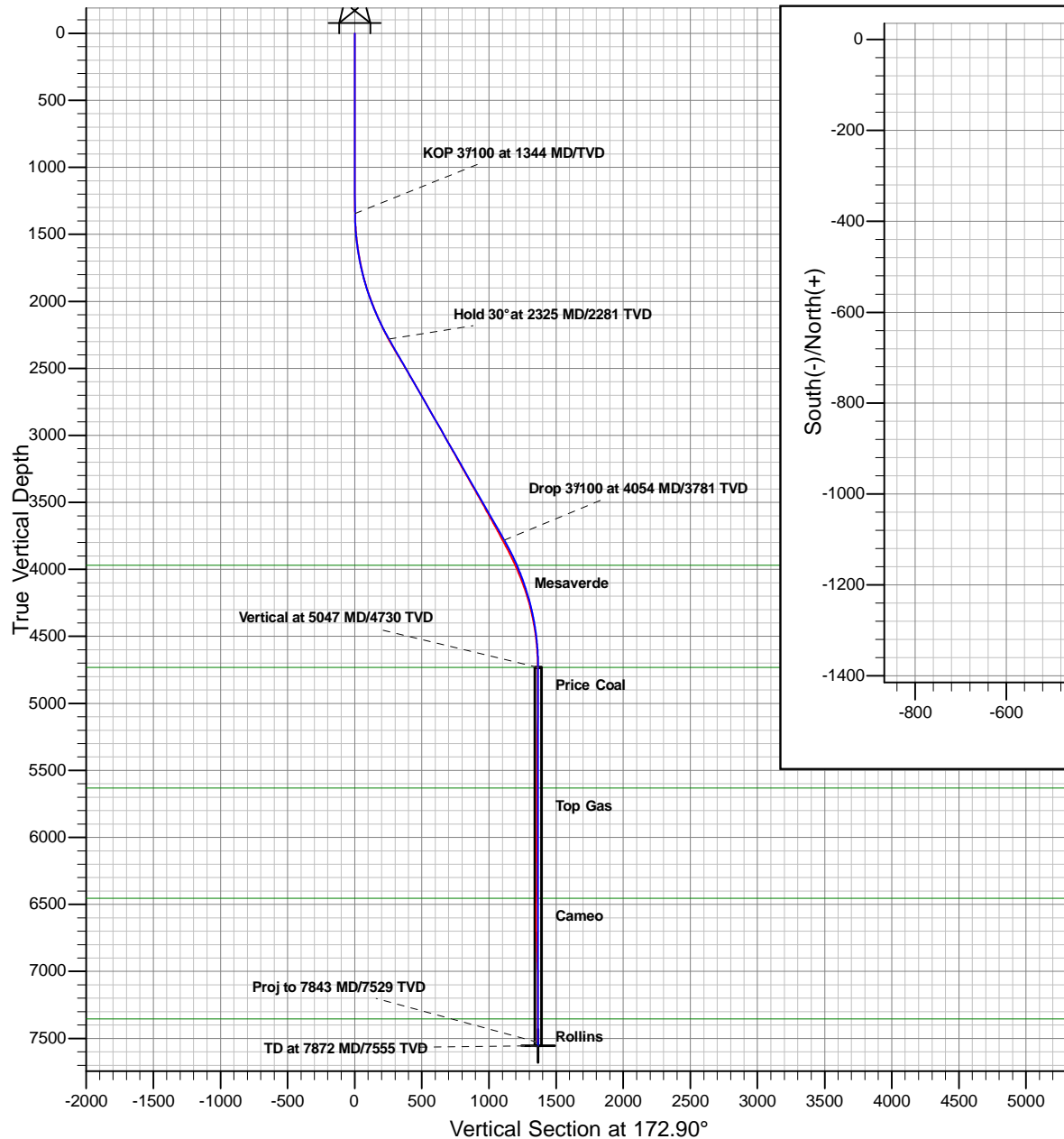
ARK Directional Services Inc
191 University Blvd, # 601
Denver, CO 80206



Antero Resources

Burckle A14 (111335)

Planned Vs. Actual



Magnetic Field Details

Total Correction to Grid N: +11.93°



Model: IGRF2010
Date: 21-Apr-11
Grid Conv: -1.70
Mag. Dec: 10.23°
Field Strength: 52327
Dip: 65.83°

PROJECT DETAILS: Burckle

Geodetic System: Universal Transverse Mercator
Datum: North American Datum 1983
Ellipsoid: GRS 1980
Zone: Zone 13N (108 W to 102 W)
System Datum: Mean Sea Level

REFERENCE INFORMATION

Co-ordinate (N/E) Reference: Well Burckle A14 (111335) - Slot A14, Grid North
Vertical (TVD) Reference: KB @ 5583.00ft (Original Well Elev)
Section (VS) Reference: Slot - A14(0.00N, 0.00E)
Measured Depth Reference: KB @ 5583.00ft (Original Well Elev)
Calculation Method: Minimum Curvature

Plan: Burckle A14 P02
Created By: ARK Directional Services Inc.
Date: 11:16, May 24 2011

Antero Resources

Burckle

Burckle A Pad

Burckle A14 (111335) - Slot A14

A14

Survey: A14

Survey Report - Geographic

24 May, 2011

ARK Directional Services

Survey Report - Geographic

Company:	Antero Resources	Local Co-ordinate Reference:	Well Burckle A14 (111335) - Slot A14
Project:	Burckle	TVD Reference:	KB @ 5583.00ft (Original Well Elev)
Site:	Burckle A Pad	MD Reference:	KB @ 5583.00ft (Original Well Elev)
Well:	Burckle A14 (111335)	North Reference:	Grid
Wellbore:	A14	Survey Calculation Method:	Minimum Curvature
Design:	A14	Database:	EDM SERVER DB

Project	Burckle		
Map System:	Universal Transverse Mercator	System Datum:	Mean Sea Level
Geo Datum:	North American Datum 1983		
Map Zone:	Zone 13N (108 W to 102 W)		

Site		Burckle A Pad					
Site Position:		Northing:	14,365,035.78	usft	Latitude:	39.525250278°N	
From:	Map	Easting:	887,434.87	usft	Longitude:	107.670145154°W	
Position Uncertainty:	0.00	ft	Slot Radius:	13.20	in	Grid Convergence:	-1.70 °

Well	Burckle A14 (111335) - Slot A14					
Well Position	+N/-S	0.00 ft	Northing:	14,365,044.45 usft	Latitude:	39.525270898°N
	+E/-W	0.00 ft	Easting:	887,395.82 usft	Longitude:	107.670284393°W
Position Uncertainty		0.00 ft	Wellhead Elevation:	ft	Ground Level:	5,559.00 ft

Wellbore	A14				
Magnetics	Model Name	Sample Date	Declination (°)	Dip Angle (°)	Field Strength (nT)
	IGRF2010	2011/04/21	10.23	65.83	52,327

Design	A14				
Audit Notes:					
Version:	1.0	Phase:	ACTUAL	Tie On Depth:	0.00
Vertical Section:	Depth From (TVD) (ft)	+N/-S (ft)	+E/-W (ft)	Direction (°)	
	0.00	0.00	0.00	172.90	

Survey Program	Date	2011/05/24			
From (ft)	To (ft)	Survey (Wellbore)	Tool Name	Description	
100.00	1,170.00	Burckle A14 Surf (A14)	NS-GYRO-MS	North sensing gyrocompassing m/s	
1,299.00	7,843.00	A14 (A14)	MWD	MWD - Standard	

Survey										
Measured Depth (ft)	Inclination (°)	Azimuth (°)	Vertical Depth (ft)	+N/-S (ft)	+E/-W (ft)	Map Northing (usft)	Map Easting (usft)	Latitude	Longitude	
1,170.00	0.52	126.42	1,169.97	-0.57	5.21	14,365,043.88	887,401.04	39.525269765°N	107.670265861°W	
1,299.00	0.09	359.27	1,298.97	-0.81	5.68	14,365,043.64	887,401.51	39.525269127°N	107.670264171°W	
1,342.00	0.44	165.91	1,341.97	-0.94	5.72	14,365,043.51	887,401.55	39.525268784°N	107.670264016°W	
1,374.00	1.76	168.55	1,373.96	-1.54	5.85	14,365,042.91	887,401.67	39.525267146°N	107.670263502°W	
1,405.00	2.90	168.02	1,404.94	-2.77	6.11	14,365,041.68	887,401.93	39.525263782°N	107.670262461°W	
1,437.00	3.69	177.96	1,436.88	-4.60	6.31	14,365,039.85	887,402.14	39.525258803°N	107.670261544°W	
1,468.00	4.48	173.30	1,467.80	-6.80	6.49	14,365,037.65	887,402.31	39.525252784°N	107.670260687°W	
1,500.00	5.54	176.11	1,499.68	-9.58	6.74	14,365,034.87	887,402.56	39.525245171°N	107.670259506°W	
1,531.00	6.24	174.62	1,530.52	-12.75	7.00	14,365,031.70	887,402.82	39.525236494°N	107.670258254°W	
1,563.00	7.03	173.85	1,562.30	-16.43	7.37	14,365,028.02	887,403.20	39.525226433°N	107.670256546°W	
1,594.00	7.73	173.65	1,593.05	-20.38	7.81	14,365,024.07	887,403.63	39.525215610°N	107.670254593°W	

ARK Directional Services

Survey Report - Geographic

Company:	Antero Resources	Local Co-ordinate Reference:	Well Burckle A14 (111335) - Slot A14
Project:	Burckle	TVD Reference:	KB @ 5583.00ft (Original Well Elev)
Site:	Burckle A Pad	MD Reference:	KB @ 5583.00ft (Original Well Elev)
Well:	Burckle A14 (111335)	North Reference:	Grid
Wellbore:	A14	Survey Calculation Method:	Minimum Curvature
Design:	A14	Database:	EDM SERVER DB

Survey									
Measured Depth (ft)	Inclination (°)	Azimuth (°)	Vertical Depth (ft)	+N/-S (ft)	+E/-W (ft)	Map Northing (usft)	Map Easting (usft)	Latitude	Longitude
1,626.00	8.79	173.82	1,624.71	-24.95	8.31	14,365,019.50	887,404.13	39.525203113°N	107.670252337°W
1,657.00	10.02	175.46	1,655.30	-30.00	8.78	14,365,014.45	887,404.60	39.525189315°N	107.670250147°W
1,689.00	10.81	173.65	1,686.77	-35.76	9.33	14,365,008.69	887,405.15	39.525173564°N	107.670247585°W
1,720.00	11.43	171.89	1,717.19	-41.69	10.08	14,365,002.76	887,405.91	39.525157357°N	107.670244288°W
1,752.00	12.22	171.80	1,748.51	-48.18	11.01	14,364,996.27	887,406.84	39.525139625°N	107.670240309°W
1,783.00	13.18	170.57	1,778.75	-54.91	12.06	14,364,989.54	887,407.88	39.525121236°N	107.670235892°W
1,815.00	14.06	169.43	1,809.85	-62.33	13.37	14,364,982.12	887,409.19	39.525100986°N	107.670230469°W
1,909.00	17.67	170.57	1,900.25	-87.64	17.81	14,364,956.81	887,413.63	39.525031922°N	107.670212103°W
2,004.00	20.30	171.63	1,990.08	-118.17	22.57	14,364,926.28	887,418.39	39.524948546°N	107.670192024°W
2,098.00	22.59	171.72	2,077.57	-152.17	27.54	14,364,892.28	887,423.36	39.524855667°N	107.670170827°W
2,193.00	24.79	172.07	2,164.55	-189.96	32.92	14,364,854.49	887,428.74	39.524752439°N	107.670147810°W
2,287.00	27.69	172.95	2,248.86	-231.16	38.32	14,364,813.29	887,434.14	39.524639843°N	107.670124347°W
2,382.00	29.88	173.21	2,332.12	-276.57	43.83	14,364,767.88	887,439.65	39.524515715°N	107.670100062°W
2,476.00	31.11	172.59	2,413.11	-323.90	49.73	14,364,720.55	887,445.55	39.524386339°N	107.670074184°W
2,570.00	30.41	171.80	2,493.89	-371.53	56.25	14,364,672.92	887,452.07	39.524256202°N	107.670046061°W
2,665.00	30.06	171.89	2,575.96	-418.89	63.04	14,364,625.56	887,458.86	39.524126845°N	107.670017044°W
2,759.00	29.88	172.51	2,657.39	-465.41	69.41	14,364,579.04	887,465.23	39.523999734°N	107.669989575°W
2,854.00	29.79	171.89	2,739.80	-512.23	75.82	14,364,532.22	887,471.65	39.523871795°N	107.669961932°W
2,948.00	29.79	172.95	2,821.38	-558.53	81.99	14,364,485.93	887,477.81	39.523745299°N	107.669935244°W
3,043.00	29.79	174.97	2,903.83	-605.46	86.95	14,364,439.00	887,482.77	39.523616954°N	107.669912720°W
3,137.00	29.71	174.26	2,985.44	-651.89	91.33	14,364,392.56	887,487.15	39.523489912°N	107.669892333°W
3,232.00	29.27	174.26	3,068.13	-698.43	96.01	14,364,346.03	887,491.83	39.523362638°N	107.669870872°W
3,326.00	28.83	174.26	3,150.31	-743.84	100.57	14,364,300.61	887,496.39	39.523238417°N	107.669849927°W
3,421.00	29.62	172.33	3,233.22	-789.90	105.99	14,364,254.55	887,501.82	39.523112500°N	107.669825870°W
3,515.00	29.09	172.15	3,315.15	-835.56	112.22	14,364,208.89	887,508.04	39.522987746°N	107.669799032°W
3,610.00	29.27	172.51	3,398.09	-881.46	118.40	14,364,162.99	887,514.22	39.522862317°N	107.669772310°W
3,704.00	29.53	174.35	3,479.99	-927.30	123.67	14,364,117.15	887,519.50	39.522736996°N	107.669748801°W
3,799.00	28.39	173.58	3,563.11	-973.04	128.50	14,364,071.41	887,524.33	39.522611897°N	107.669726882°W
3,894.00	29.53	176.02	3,646.23	-1,018.84	132.65	14,364,025.61	887,528.48	39.522486581°N	107.669707364°W
3,988.00	28.13	177.69	3,728.58	-1,064.10	135.16	14,363,980.36	887,530.98	39.522362634°N	107.669693748°W
4,083.00	28.39	173.21	3,812.26	-1,108.90	138.73	14,363,935.55	887,534.55	39.522239997°N	107.669676380°W
4,177.00	26.28	173.47	3,895.76	-1,151.77	143.74	14,363,892.68	887,539.56	39.522122794°N	107.669654129°W
4,272.00	24.17	174.09	3,981.70	-1,192.02	148.13	14,363,852.43	887,543.95	39.522012744°N	107.669634332°W
4,366.00	21.36	172.24	4,068.37	-1,228.13	152.43	14,363,816.32	887,548.25	39.521914025°N	107.669615326°W
4,460.00	19.07	172.24	4,156.57	-1,260.31	156.81	14,363,784.14	887,552.63	39.521826094°N	107.669596409°W
4,555.00	15.29	171.54	4,247.32	-1,288.09	160.75	14,363,756.36	887,556.57	39.521750211°N	107.669579533°W
4,649.00	12.22	172.59	4,338.61	-1,310.22	163.86	14,363,734.23	887,559.68	39.521689752°N	107.669566201°W
4,744.00	9.58	174.62	4,431.89	-1,328.06	165.90	14,363,716.39	887,561.72	39.521640965°N	107.669557105°W
4,839.00	6.42	175.06	4,525.95	-1,341.23	167.10	14,363,703.23	887,562.92	39.521604945°N	107.669551475°W
4,933.00	3.43	177.34	4,619.59	-1,349.27	167.68	14,363,695.18	887,563.50	39.521582917°N	107.669548563°W
5,027.00	0.79	165.65	4,713.52	-1,352.71	167.97	14,363,691.74	887,563.79	39.521573511°N	107.669547171°W
5,122.00	0.44	326.67	4,808.52	-1,353.04	167.93	14,363,691.41	887,563.75	39.521572603°N	107.669547271°W
5,216.00	0.18	206.43	4,902.52	-1,352.87	167.67	14,363,691.58	887,563.49	39.521573046°N	107.669548224°W
5,311.00	0.26	13.34	4,997.52	-1,352.80	167.65	14,363,691.66	887,563.47	39.521573254°N	107.669548291°W
5,405.00	1.23	35.75	5,091.51	-1,351.77	168.29	14,363,692.68	887,564.11	39.521576121°N	107.669546137°W
5,499.00	0.97	19.84	5,185.49	-1,350.20	169.15	14,363,694.25	887,564.97	39.521580491°N	107.669543257°W
5,594.00	0.44	19.22	5,280.49	-1,349.10	169.54	14,363,695.35	887,565.36	39.521583543°N	107.669541981°W
5,688.00	0.53	207.93	5,374.48	-1,349.14	169.46	14,363,695.31	887,565.28	39.521583417°N	107.669542276°W
5,783.00	1.67	10.35	5,469.47	-1,348.17	169.50	14,363,696.28	887,565.32	39.521586092°N	107.669542227°W
5,877.00	1.14	12.46	5,563.44	-1,345.91	169.95	14,363,698.54	887,565.77	39.521592330°N	107.669540878°W
5,972.00	0.44	17.64	5,658.44	-1,344.64	170.26	14,363,699.81	887,566.08	39.521595841°N	107.669539898°W
6,066.00	0.44	213.81	5,752.43	-1,344.60	170.17	14,363,699.86	887,565.99	39.521595954°N	107.669540226°W
6,161.00	0.53	305.66	5,847.43	-1,344.64	169.61	14,363,699.81	887,565.43	39.521595780°N	107.669542205°W
6,255.00	0.53	260.75	5,941.43	-1,344.46	168.83	14,363,699.99	887,564.65	39.521596220°N	107.669544996°W
6,350.00	0.44	319.37	6,036.43	-1,344.25	168.16	14,363,700.20	887,563.98	39.521596731°N	107.669547395°W

ARK Directional Services

Survey Report - Geographic

Company:	Antero Resources	Local Co-ordinate Reference:	Well Burckle A14 (111335) - Slot A14
Project:	Burckle	TVD Reference:	KB @ 5583.00ft (Original Well Elev)
Site:	Burckle A Pad	MD Reference:	KB @ 5583.00ft (Original Well Elev)
Well:	Burckle A14 (111335)	North Reference:	Grid
Wellbore:	A14	Survey Calculation Method:	Minimum Curvature
Design:	A14	Database:	EDM SERVER DB

Survey									
Measured Depth (ft)	Inclination (°)	Azimuth (°)	Vertical Depth (ft)	+N/-S (ft)	+E/-W (ft)	Map Northing (usft)	Map Easting (usft)	Latitude	Longitude
6,444.00	0.70	238.86	6,130.42	-1,344.28	167.43	14,363,700.18	887,563.25	39.521596609°N	107.669549966°W
6,539.00	1.14	255.65	6,225.41	-1,344.81	166.02	14,363,699.64	887,561.84	39.521595028°N	107.669554912°W
6,634.00	0.18	106.06	6,320.40	-1,345.09	165.25	14,363,699.37	887,561.07	39.521594209°N	107.669557619°W
6,728.00	0.97	23.62	6,414.40	-1,344.40	165.71	14,363,700.06	887,561.53	39.521596134°N	107.669556059°W
6,823.00	0.53	0.59	6,509.39	-1,343.22	166.03	14,363,701.23	887,561.86	39.521599388°N	107.669555025°W
6,917.00	0.26	240.45	6,603.39	-1,342.89	165.85	14,363,701.56	887,561.68	39.521600277°N	107.669555701°W
7,012.00	0.70	212.76	6,698.39	-1,343.49	165.35	14,363,700.97	887,561.17	39.521598606°N	107.669557415°W
7,106.00	1.93	202.92	6,792.36	-1,345.43	164.43	14,363,699.03	887,560.25	39.521593206°N	107.669560496°W
7,201.00	2.37	198.52	6,887.29	-1,348.76	163.18	14,363,695.69	887,559.00	39.521583952°N	107.669564562°W
7,295.00	1.23	161.61	6,981.25	-1,351.56	162.88	14,363,692.89	887,558.70	39.521576245°N	107.669565327°W
7,389.00	0.44	176.72	7,075.24	-1,352.88	163.22	14,363,691.57	887,559.04	39.521572657°N	107.669563988°W
7,484.00	2.11	260.75	7,170.21	-1,353.53	161.51	14,363,690.93	887,557.33	39.521570748°N	107.669569961°W
7,579.00	2.90	261.01	7,265.12	-1,354.18	157.41	14,363,690.27	887,553.23	39.521568613°N	107.669584415°W
7,673.00	0.44	247.39	7,359.08	-1,354.69	154.73	14,363,689.76	887,550.55	39.521566994°N	107.669593863°W
7,767.00	0.26	219.44	7,453.07	-1,355.00	154.26	14,363,689.46	887,550.08	39.521566124°N	107.669595491°W
7,798.00	0.26	225.94	7,484.07	-1,355.10	154.17	14,363,689.35	887,549.99	39.521565833°N	107.669595818°W
7,843.00	0.26	225.94	7,529.07	-1,355.24	154.02	14,363,689.21	887,549.84	39.521565431°N	107.669596323°W
Proj to 7843 MD/7529 TVD - A14 BH									

Survey Annotations				
Measured Depth (ft)	Vertical Depth (ft)	Local Coordinates		Comment
		+N/-S (ft)	+E/-W (ft)	
7,843.00	7,529.07	-1,355.24	154.02	Proj to 7843 MD/7529 TVD

Checked By: _____ Approved By: _____ Date: _____