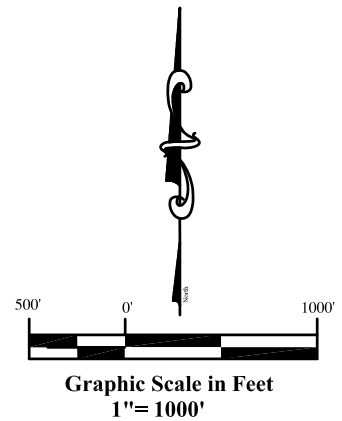
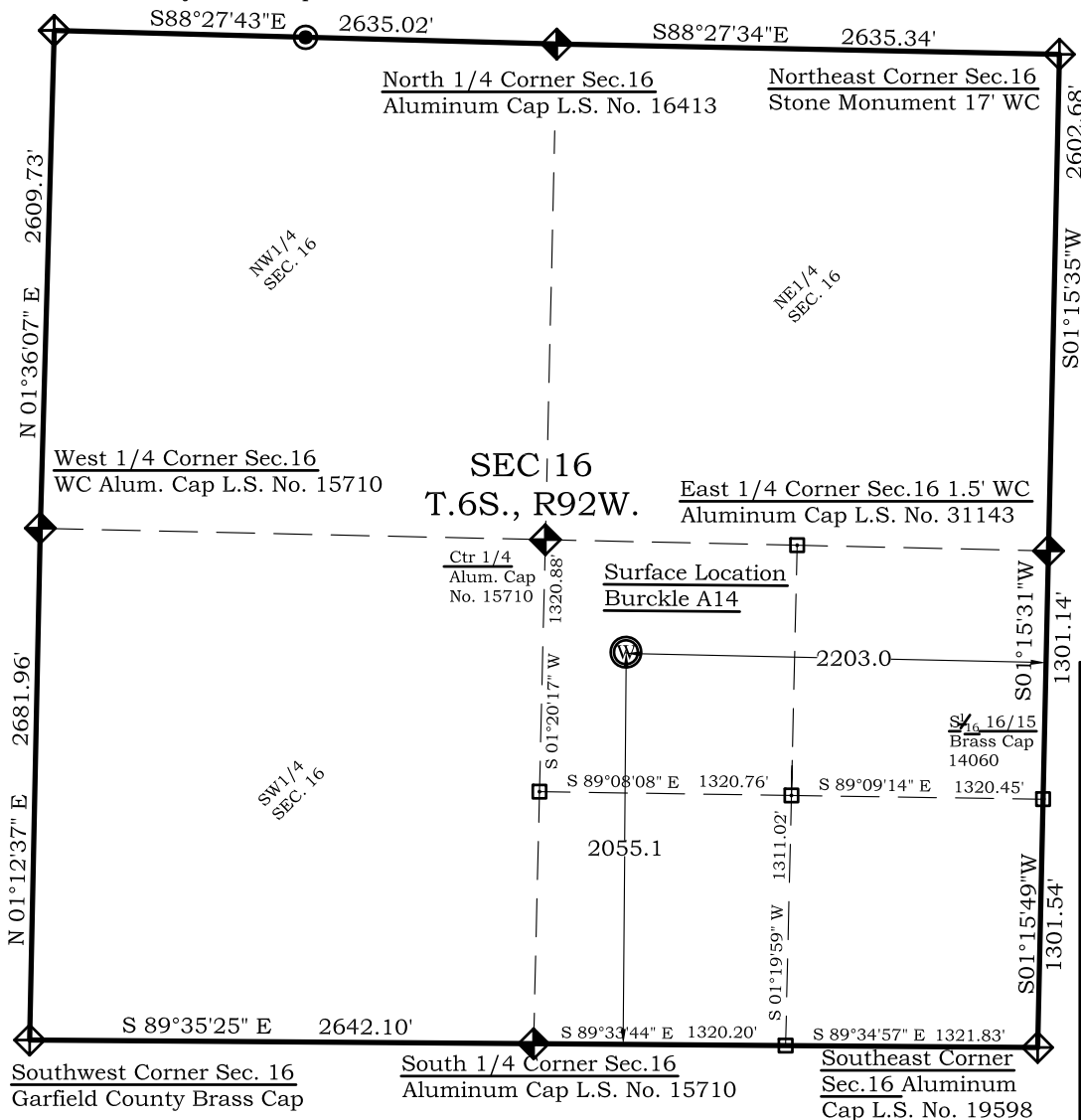


As Drilled Location Plat

Burckle Federal A14

Sec. 16, T.6S., R.92W.

Northwest Corner Sec. 16
Garfield County Brass Cap



Legend

- ◈ - Field Surveyed Section Corner
- ◈ - Field Surveyed Quarter Corner
- ⊙ - Calculated Section Corner Location
- ◻ - Field Surveyed 1/6 Corner

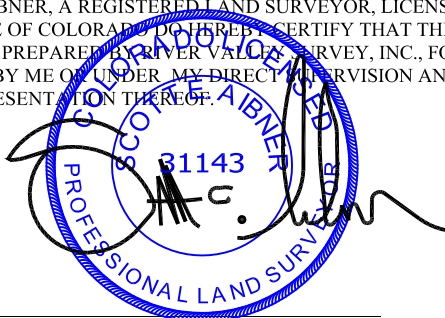
Burckle Federal A14 As Drilled Surface Location

2055' FSL
2203' FEL
Gnd El= 5560.5
NAD83
Lat: 39.525271368°N
Long: 107.670284411°W
NAD27
Lat: 39.525290822°N
Long: 107.669669077°W
UTM 13 NORTH
NAD 1983
Northing
14365044.620
Easting
887395.822

Prepared For Antero Resources:
As Drilled Burckle Federal Well A14 Well Situate in The
NW 1/4 SE 1/4 Section 16, Township 6 South, Range 92 West of the
6 th. Principal Meridian, County of Garfield, State of Colorado

SURVEYOR'S CERTIFICATE

I, SCOTT E. AIBNER, A REGISTERED LAND SURVEYOR, LICENSED UNDER THE LAWS OF THE STATE OF COLORADO DO HEREBY CERTIFY THAT THE SURVEY SHOWN HEREON WAS PREPARED BY RIVER VALLEY SURVEY, INC., FOR ANTERO RESOURCES, BY ME OR UNDER MY DIRECT SUPERVISION AND THAT THIS PLAT IS A TRUE REPRESENTATION THEREOF.



BY: _____
SCOTT E. AIBNER, COLORADO REG. NO. 31143

Notes

- 1.) LATITUDE AND LONGITUDE COORDINATES ARE DIFFERENTIALLY CORRECTED AND BASED ON PUBLISHED NGCS CONTROL STATION "WDP-5". SYSTEM: UTM ZONE: 13 NORTH DATUM: NAD 1983 (CONUS)
- 2.) ELEVATIONS ARE BASED ON NGVD OF 1929.
- 3.) ALL AS DRILLED HOLE LOCATIONS ARE MEASURED 90 DEGREES FROM SECTION LINE.
- 4.) USGS QUADRANGLE MAP "SILT CO".
- 5.) CURRENT SURFACE LAND USE: WELL PAD
- 6.) PDOP AT TIME OF LOCATION OF SURFACE WELL = 1.3



River Valley Survey, Inc.
110 East 3rd. Street, Suite 207
Rifle, Colorado 81650
Ph: 970-379-7846

Project: Burckle A Pad

Proj. No. 06001-09

Field Date: 06-03-11

Scale: 1"= 1000'

Date: 07-13-11

Sheet: As Drilled

As Drilled Well Location Plat
Prepared For Antero Resources

Situate In:
NW 1/4 SE 1/4 Section 16, T.6S., R. 92 W.
of the 6th P.M., Garfield County,
Colorado

