



Location:	COLORADO	Slot:	SLOT#03 LEE 25-6 (646'FNL & 1970'FEL)
Field:	WELD COUNTY (KERR MCGEE)	Well:	LEE 25-6X
Facility:	SEC.06-T2N-R65W	Wellbore:	LEE 25-6X PWB

## Well Profile Data

Design Comment	MD (ft)	Inc (°)	Az (°)	TVD (ft)	Local N (ft)	Local E (ft)	DLS (°/100ft)	VS (ft)
Tie On	3819.00	23.600	196.800	3584.71	-1132.90	-381.49	0.00	1185.29
3D Arc (S)	3863.63	24.000	179.072	3625.60	-1150.55	-383.93	16.00	1203.08
End of Tangent (S)	5065.57	24.000	179.072	4723.63	-1639.36	-376.01	0.00	1681.13
Drop (S)	6265.57	0.000	179.072	5888.84	-1887.00	-372.00	2.00	1923.32
End of Tangent	8338.73	0.000	179.072	7962.00	-1887.00	-372.00	0.00	1923.32

### Location Information

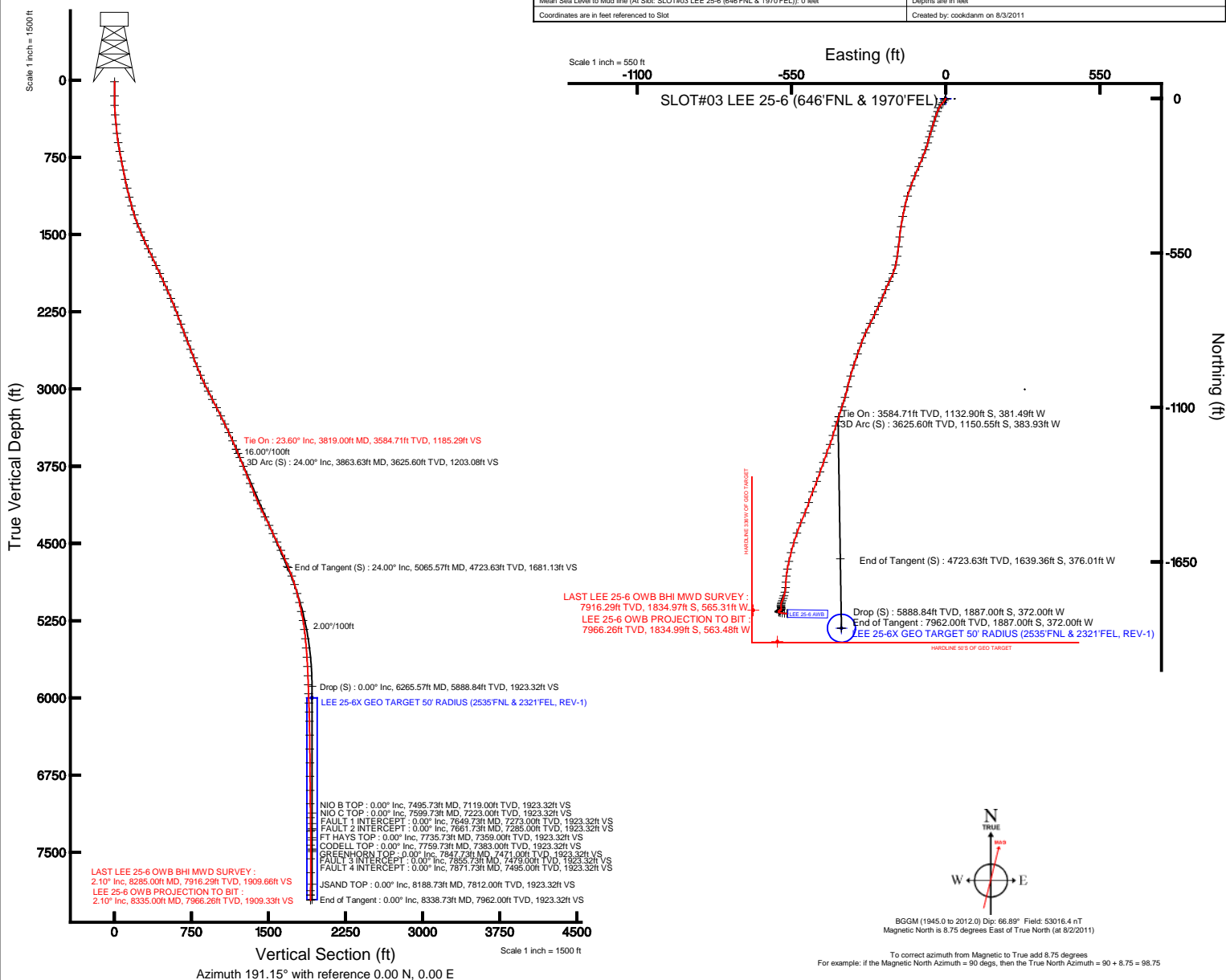
Facility Name			Grid East (US ft)	Grid North (US ft)	Latitude	Longitude
SEC.06-T2N-R65W			3222483.590	3206833.950	40°10'22.487"N	104°42'13.759"W
Slot	Local N (ft)	Local E (ft)	Grid East (US ft)	Grid North (US ft)	Latitude	Longitude
SLOT#03 LEV 25-6 (646FNL & 1970FEL)	0.02	-32.12	3222451.469	3206833.679	40°10'22.487"N	104°42'14.173"W
XTREME 15 (RKB) to Mud line (At Slot: SLOT#03 LEV 25-6 (646FNL & 1970FEL))					4977ft	
Mean Sea Level to Mud line (At Slot: SLOT#03 LEV 25-6 (646FNL & 1970FEL))					0ft	
XTREME 15 (RKB) to Mean Sea Level					4977ft	

## Targets

Name	MD (ft)	TYD (ft)	Local N (ft)	Local E (ft)	Grid East (US ft)	Grid North (US ft)	Latitude	Longitude
LEE 25-4 GEO TARGET 50' RADUS (2470FNL & 2050FNL, REV-1)	8000.00	-1823.00	-400.87	3221867.01	1300505.44	40°10'04.4727N	104°42'21.9131W	
LEE 25-4 HROULDN 335W	8000.00	-1822.96	-468.89	3221781.00	1300504.71	40°10'04.4727N	104°42'23.021W	
LEE 25-4 HROULDN 50'S	8000.00	-1934.96	-400.89	3221868.00	1304893.49	40°10'03.3667N	104°42'21.9131W	
LEE 25-4X GEO TARGET 50' RADUS (2353FNL & 2321FNL, REV-1)	8000.00	-1887.00	-372.00	3222096.44	1304943.00	40°10'03.8407N	104°42'18.5865W	
LEE 25-4X SECTION LINES	8000.00	0.00	0.00	3222451.47	1306893.68	40°10'22.4878N	104°42'14.1737W	
LEE 25-4X E	8000.00	-1873.73	1948.81	3224416.93	1304977.60	40°10'03.0707N	104°41'49.0707W	
LEE 25-4X N	6000.00	646.94	-684.42	3221781.30	1307474.42	40°10'28.8801N	104°42'22.5990W	
LEE 25-4X NE	6000.00	640.94	1977.33	3224422.88	1307492.31	40°10'28.8207N	104°41'48.7007W	
LEE 25-4X NEW SECTION LINES	6000.00	0.00	0.00	3222451.47	1306893.68	40°10'22.4878N	104°42'14.1737W	

Plot reference wellpath is LEE 25-6X (REV-A.1) PWP

True vertical depths are referenced to XTREME 15 (RKB)	Grid System: NAD83 / Lambert Colorado SP, Northern Zone (501), US feet
Measured depths are referenced to XTREME 15 (RKB)	North Reference: True north
XTREME 15 (RKB) to Mean Sea Level: 4977 feet	Scale: True distance
Mean Sea Level to Mud line (At Slot: SLOTH03 LEE 2-6 (646FNL & 1970FEL): 0 feet	Depths are in feet
Coordinates are in feet referenced to Slox	Created by: cookdann on 8/3/2011





# Planned Wellpath Report

LEE 25-6X (REV-A.1) PWP

Page 1 of 5



## REFERENCE WELLPATH IDENTIFICATION

Operator	KERR MCGEE OIL & GAS ONSHORE LP	Slot	SLOT#03 LEE 25-6 (646'FNL & 1970'FEL)
Area	COLORADO	Well	LEE 25-6X
Field	WELD COUNTY (KERR MCGEE)	Wellbore	LEE 25-6X PWB
Facility	SEC.06-T2N-R65W	Sidetrack from	LEE 25-6 AWB at 3819.00 MD

## REPORT SETUP INFORMATION

Projection System	NAD83 / Lambert Colorado SP, Northern Zone (501), US feet	Software System	WellArchitect® 3.0.0
North Reference	True	User	Cookdanm
Scale	0.999958	Report Generated	8/3/2011 at 5:32:39 PM
Convergence at slot	0.51° East	Database/Source file	WA_Denver/_LEE_25-6X_PWB.xml

## WELLPATH LOCATION

	Local coordinates		Grid coordinates		Geographic coordinates	
	North[ft]	East[ft]	Easting[US ft]	Northing[US ft]	Latitude	Longitude
Slot Location	0.02	-32.12	3222451.47	1306833.68	40°10'22.487"N	104°42'14.173"W
Facility Reference Pt			3222483.59	1306833.95	40°10'22.487"N	104°42'13.759"W
Field Reference Pt			3197771.84	1268891.29	40°04'09.600"N	104°47'36.000"W

## WELLPATH DATUM

Calculation method	Minimum curvature	XTREME 15 (RKB) to Facility Vertical Datum	4977.00ft
Horizontal Reference Pt	Slot	XTREME 15 (RKB) to Mean Sea Level	4977.00ft
Vertical Reference Pt	XTREME 15 (RKB)	XTREME 15 (RKB) to Mud Line at Slot (SLOT#03 LEE 25-6 (646'FNL & 1970'FEL))	4977.00ft
MD Reference Pt	XTREME 15 (RKB)	Section Origin	N 0.00, E 0.00 ft
Field Vertical Reference	Mean Sea Level	Section Azimuth	191.15°



# Planned Wellpath Report

LEE 25-6X (REV-A.1) PWP

Page 2 of 5



## REFERENCE WELLPATH IDENTIFICATION

Operator	KERR MCGEE OIL & GAS ONSHORE LP	Slot	SLOT#03 LEE 25-6 (646'FNL & 1970'FEL)
Area	COLORADO	Well	LEE 25-6X
Field	WELD COUNTY (KERR MCGEE)	Wellbore	LEE 25-6X PWB
Facility	SEC.06-T2N-R65W	Sidetrack from	LEE 25-6 AWB at 3819.00 MD

## WELLPATH DATA (60 stations) † = interpolated/extrapolated station

MD [ft]	Inclination [°]	Azimuth [°]	TVD [ft]	Vert Sect [ft]	North [ft]	East [ft]	DLS [°/100ft]	Comments
3819.00	23.600	196.800	3584.71	1185.29	-1132.90	-381.49	0.00	Tie On
3863.63	24.000	179.072	3625.60	1203.08	-1150.55	-383.93	16.00	3D Arc (S)
3919.00†	24.000	179.072	3676.19	1225.10	-1173.07	-383.57	0.00	
4019.00†	24.000	179.072	3767.54	1264.88	-1213.74	-382.91	0.00	
4119.00†	24.000	179.072	3858.89	1304.65	-1254.40	-382.25	0.00	
4219.00†	24.000	179.072	3950.25	1344.42	-1295.07	-381.59	0.00	
4319.00†	24.000	179.072	4041.60	1384.20	-1335.74	-380.93	0.00	
4419.00†	24.000	179.072	4132.96	1423.97	-1376.41	-380.27	0.00	
4519.00†	24.000	179.072	4224.31	1463.74	-1417.08	-379.61	0.00	
4619.00†	24.000	179.072	4315.67	1503.51	-1457.75	-378.95	0.00	
4719.00†	24.000	179.072	4407.02	1543.29	-1498.41	-378.30	0.00	
4819.00†	24.000	179.072	4498.38	1583.06	-1539.08	-377.64	0.00	
4919.00†	24.000	179.072	4589.73	1622.83	-1579.75	-376.98	0.00	
5019.00†	24.000	179.072	4681.09	1662.61	-1620.42	-376.32	0.00	
5065.57	24.000	179.072	4723.63	1681.13	-1639.36	-376.01	0.00	End of Tangent (S)
5119.00†	22.931	179.072	4772.64	1701.93	-1660.63	-375.67	2.00	
5219.00†	20.931	179.072	4865.40	1738.45	-1697.97	-375.06	2.00	
5319.00†	18.931	179.072	4959.40	1771.79	-1732.06	-374.51	2.00	
5419.00†	16.931	179.072	5054.54	1801.89	-1762.84	-374.01	2.00	
5519.00†	14.931	179.072	5150.70	1828.73	-1790.28	-373.57	2.00	
5619.00†	12.931	179.072	5247.75	1852.27	-1814.35	-373.18	2.00	
5719.00†	10.931	179.072	5345.58	1872.49	-1835.02	-372.84	2.00	
5819.00†	8.931	179.072	5444.08	1889.35	-1852.27	-372.56	2.00	
5919.00†	6.931	179.072	5543.12	1902.84	-1866.06	-372.34	2.00	
6019.00†	4.931	179.072	5642.58	1912.95	-1876.40	-372.17	2.00	
6119.00†	2.931	179.072	5742.34	1919.65	-1883.25	-372.06	2.00	
6219.00†	0.931	179.072	5842.28	1922.95	-1886.62	-372.01	2.00	
6265.57	0.000	179.072	5888.84 <sup>1</sup>	1923.32	-1887.00	-372.00	2.00	Drop (S)
6319.00†	0.000	179.072	5942.27	1923.32	-1887.00	-372.00	0.00	
6419.00†	0.000	179.072	6042.27	1923.32	-1887.00	-372.00	0.00	
6519.00†	0.000	179.072	6142.27	1923.32	-1887.00	-372.00	0.00	
6619.00†	0.000	179.072	6242.27	1923.32	-1887.00	-372.00	0.00	
6719.00†	0.000	179.072	6342.27	1923.32	-1887.00	-372.00	0.00	
6819.00†	0.000	179.072	6442.27	1923.32	-1887.00	-372.00	0.00	
6919.00†	0.000	179.072	6542.27	1923.32	-1887.00	-372.00	0.00	
7019.00†	0.000	179.072	6642.27	1923.32	-1887.00	-372.00	0.00	
7119.00†	0.000	179.072	6742.27	1923.32	-1887.00	-372.00	0.00	
7219.00†	0.000	179.072	6842.27	1923.32	-1887.00	-372.00	0.00	
7319.00†	0.000	179.072	6942.27	1923.32	-1887.00	-372.00	0.00	
7419.00†	0.000	179.072	7042.27	1923.32	-1887.00	-372.00	0.00	
7495.73†	0.000	179.072	7119.00	1923.32	-1887.00	-372.00	0.00	NIO B TOP
7519.00†	0.000	179.072	7142.27	1923.32	-1887.00	-372.00	0.00	
7599.73†	0.000	179.072	7223.00	1923.32	-1887.00	-372.00	0.00	NIO C TOP
7619.00†	0.000	179.072	7242.27	1923.32	-1887.00	-372.00	0.00	
7649.73†	0.000	179.072	7273.00	1923.32	-1887.00	-372.00	0.00	FAULT 1 INTERCEPT



# Planned Wellpath Report

LEE 25-6X (REV-A.1) PWP

Page 3 of 5



## REFERENCE WELLPATH IDENTIFICATION

Operator	KERR MCGEE OIL & GAS ONSHORE LP	Slot	SLOT#03 LEE 25-6 (646'FNL & 1970'FEL)
Area	COLORADO	Well	LEE 25-6X
Field	WELD COUNTY (KERR MCGEE)	Wellbore	LEE 25-6X PWB
Facility	SEC.06-T2N-R65W	Sidetrack from	LEE 25-6 AWB at 3819.00 MD

## WELLPATH DATA (60 stations) † = interpolated/extrapolated station

MD [ft]	Inclination [°]	Azimuth [°]	TVD [ft]	Vert Sect [ft]	North [ft]	East [ft]	DLS [°/100ft]	Comments
7661.73†	0.000	179.072	7285.00	1923.32	-1887.00	-372.00	0.00	FAULT 2 INTERCEPT
7719.00†	0.000	179.072	7342.27	1923.32	-1887.00	-372.00	0.00	
7735.73†	0.000	179.072	7359.00	1923.32	-1887.00	-372.00	0.00	FT HAYS TOP
7759.73†	0.000	179.072	7383.00	1923.32	-1887.00	-372.00	0.00	CODELL TOP
7819.00†	0.000	179.072	7442.27	1923.32	-1887.00	-372.00	0.00	
7847.73†	0.000	179.072	7471.00	1923.32	-1887.00	-372.00	0.00	GREENHORN TOP
7855.73†	0.000	179.072	7479.00	1923.32	-1887.00	-372.00	0.00	FAULT 3 INTERCEPT
7871.73†	0.000	179.072	7495.00	1923.32	-1887.00	-372.00	0.00	FAULT 4 INTERCEPT
7919.00†	0.000	179.072	7542.27	1923.32	-1887.00	-372.00	0.00	
8019.00†	0.000	179.072	7642.27	1923.32	-1887.00	-372.00	0.00	
8119.00†	0.000	179.072	7742.27	1923.32	-1887.00	-372.00	0.00	
8188.73†	0.000	179.072	7812.00	1923.32	-1887.00	-372.00	0.00	JSAND TOP
8219.00†	0.000	179.072	7842.27	1923.32	-1887.00	-372.00	0.00	
8319.00†	0.000	179.072	7942.27	1923.32	-1887.00	-372.00	0.00	
8338.73	0.000	179.072	7962.00	1923.32	-1887.00	-372.00	0.00	End of Tangent



# Planned Wellpath Report

LEE 25-6X (REV-A.1) PWP

Page 4 of 5



## REFERENCE WELLPATH IDENTIFICATION

Operator	KERR MCGEE OIL & GAS ONSHORE LP	Slot	SLOT#03 LEE 25-6 (646'FNL & 1970'FEL)
Area	COLORADO	Well	LEE 25-6X
Field	WELD COUNTY (KERR MCGEE)	Wellbore	LEE 25-6X PWB
Facility	SEC.06-T2N-R65W	Sidetrack from	LEE 25-6 AWB at 3819.00 MD

## TARGETS

Name	MD [ft]	TVD [ft]	North [ft]	East [ft]	Grid East [US ft]	Grid North [US ft]	Latitude	Longitude	Shape
LEE 25-6 GEO TARGET 50' RADIUS (2470'FNL & 2550'FEL, REV-1)		6000.00	-1823.00	-600.87	3221867.01	1305005.44	40°10'04.472"N	104°42'21.913"W	circle
LEE 25-6 HARDLINE 336'W		6000.00	-1822.96	-686.89	3221781.00	1305004.71	40°10'04.472"N	104°42'23.021"W	point
LEE 25-6 HARDLINE 50'S		6000.00	-1934.96	-600.89	3221868.00	1304893.49	40°10'03.366"N	104°42'21.913"W	point
1) LEE 25-6X GEO TARGET 50' RADIUS (2535'FNL & 2321'FEL, REV-1)		6000.00	-1887.00	-372.00	3222096.44	1304943.50	40°10'03.840"N	104°42'18.965"W	circle
LEE 25-6X SECTION LINES		6000.00	0.00	0.00	3222451.47	1306833.68	40°10'22.487"N	104°42'14.173"W	polygon
LEE 25-6X E		6000.00	-1873.73	1948.81	3224416.93	1304977.60	40°10'03.970"N	104°41'49.070"W	point
LEE 25-6X N		6000.00	646.94	-684.42	3221761.30	1307474.42	40°10'28.880"N	104°42'22.990"W	point
LEE 25-6X NE		6000.00	640.94	1977.33	3224422.88	1307492.31	40°10'28.820"N	104°41'48.700"W	point
LEE 25-6X NEW SECTION LINES		6000.00	0.00	0.00	3222451.47	1306833.68	40°10'22.487"N	104°42'14.173"W	point

## SURVEY PROGRAM - Ref Wellbore: LEE 25-6X PWB Ref Wellpath: LEE 25-6X (REV-A.1) PWP

Start MD [ft]	End MD [ft]	Positional Uncertainty Model	Log Name/Comment	Wellbore
15.00	3819.00	NaviTrak (Standard)		LEE 25-6 AWB
3819.00	8338.73	NaviTrak (Standard)		LEE 25-6X PWB



# Planned Wellpath Report

LEE 25-6X (REV-A.1) PWP

Page 5 of 5



## REFERENCE WELLPATH IDENTIFICATION

Operator	KERR MCGEE OIL & GAS ONSHORE LP	Slot	SLOT#03 LEE 25-6 (646'FNL & 1970'FEL)
Area	COLORADO	Well	LEE 25-6X
Field	WELD COUNTY (KERR MCGEE)	Wellbore	LEE 25-6X PWB
Facility	SEC.06-T2N-R65W	Sidetrack from	LEE 25-6 AWB at 3819.00 MD

## WELLPATH COMMENTS

MD [ft]	Inclination [°]	Azimuth [°]	TVD [ft]	Comment
7495.73	0.000	179.072	7119.00	NIO B TOP
7599.73	0.000	179.072	7223.00	NIO C TOP
7649.73	0.000	179.072	7273.00	FAULT 1 INTERCEPT
7661.73	0.000	179.072	7285.00	FAULT 2 INTERCEPT
7735.73	0.000	179.072	7359.00	FT HAYS TOP
7759.73	0.000	179.072	7383.00	CODELL TOP
7847.73	0.000	179.072	7471.00	GREENHORN TOP
7855.73	0.000	179.072	7479.00	FAULT 3 INTERCEPT
7871.73	0.000	179.072	7495.00	FAULT 4 INTERCEPT
8188.73	0.000	179.072	7812.00	JSAND TOP