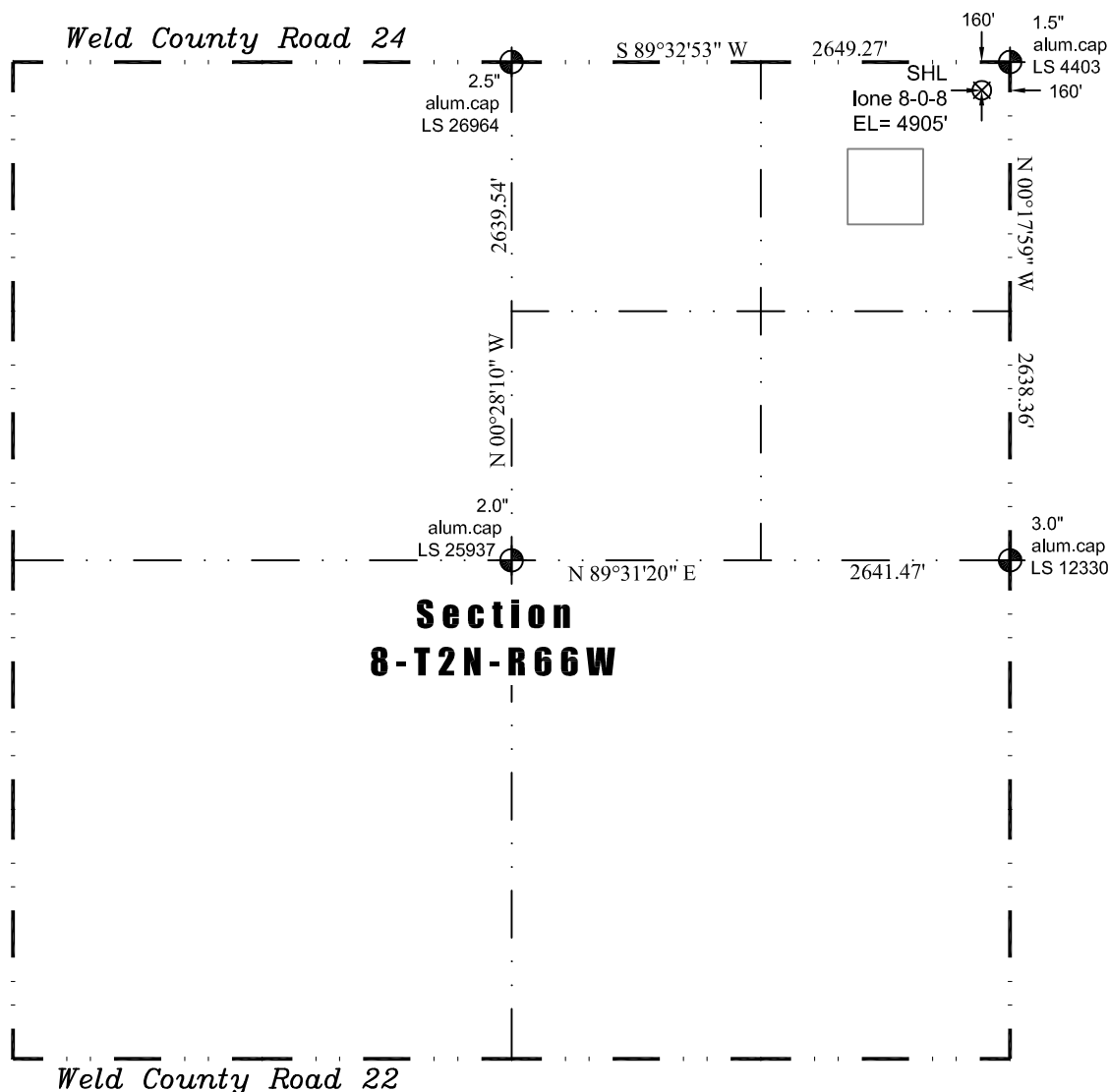


PLS Group, LLC
109 Coronado Ct. - Bldg. 7
Fort Collins, Colorado 80525
P. 970-282-3446 Fx. 970-377-6767

WELL LOCATION CERTIFICATE

*THIS MAP DOES NOT
REPRESENT A BOUNDARY SURVEY*



Scale 1" = 1000'
approximate scale

LEGEND
— found survey monument
(c) — calculated dimension

In accordance with a request from Jennifer Lind of EnCana Oil & Gas (USA) Inc., PLS Group, LLC. has determined the location of the **lone 8-0-8** well site to be SHL 160' FNL and 160' FEL, as measured at ninety (90) degrees from the section lines of Section 8, Township 2 North, Range 66 West of the 6th Principal Meridian, Weld County, Colorado.

Proposed Surface Hole Data:

Latitude: N 40.15941°
Longitude: W 104.79224°
PDOP: 1.1

Nearest:

Building 2856' northeast	Above Ground Utility 258' northeast
Public Road 3099' northwest	Railroad 5800' west
Property Line 160' east	Well Window: SHL is 426' outside
Existing Well: lone #5 903' southwest	

Notes:

- 1) Bearings and distances based on NAD 83 Colorado North State Plane Coordinates using RTK GPS observations taken 2/4/10 by operator Craig Burke.
- 2) Conversion factor to ground (1.000275398).
- 3) Elevations based on NAVD 88 GPS heights and Geoid 2003 corrections.
- 4) See Location Drawing for visible improvements within 400 feet.
- 5) The location falls on agricultural land.

I hereby certify that this Well Location Certificate was prepared by me or under my direct supervision on 8/3/2011 for and on behalf of EnCana Oil & Gas (USA) Inc. That it is not a Land Survey Plat or an Improvement Survey Plat and that it is not to be relied upon for establishment of fences, buildings, or other future improvement lines.

John Robert McGehee LS#38219
Well: lone 8-0-8 WLC

NOTICE: According to Colorado law you must commence any legal action based upon any defect in this W.L.C. within three years after you first discover such defect. In no event may any action based upon any defect in this W.L.C. be commenced more than ten years from this said date of the certification shown hereon.