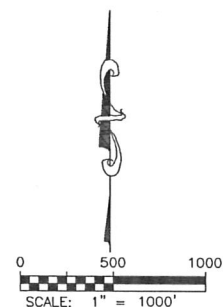
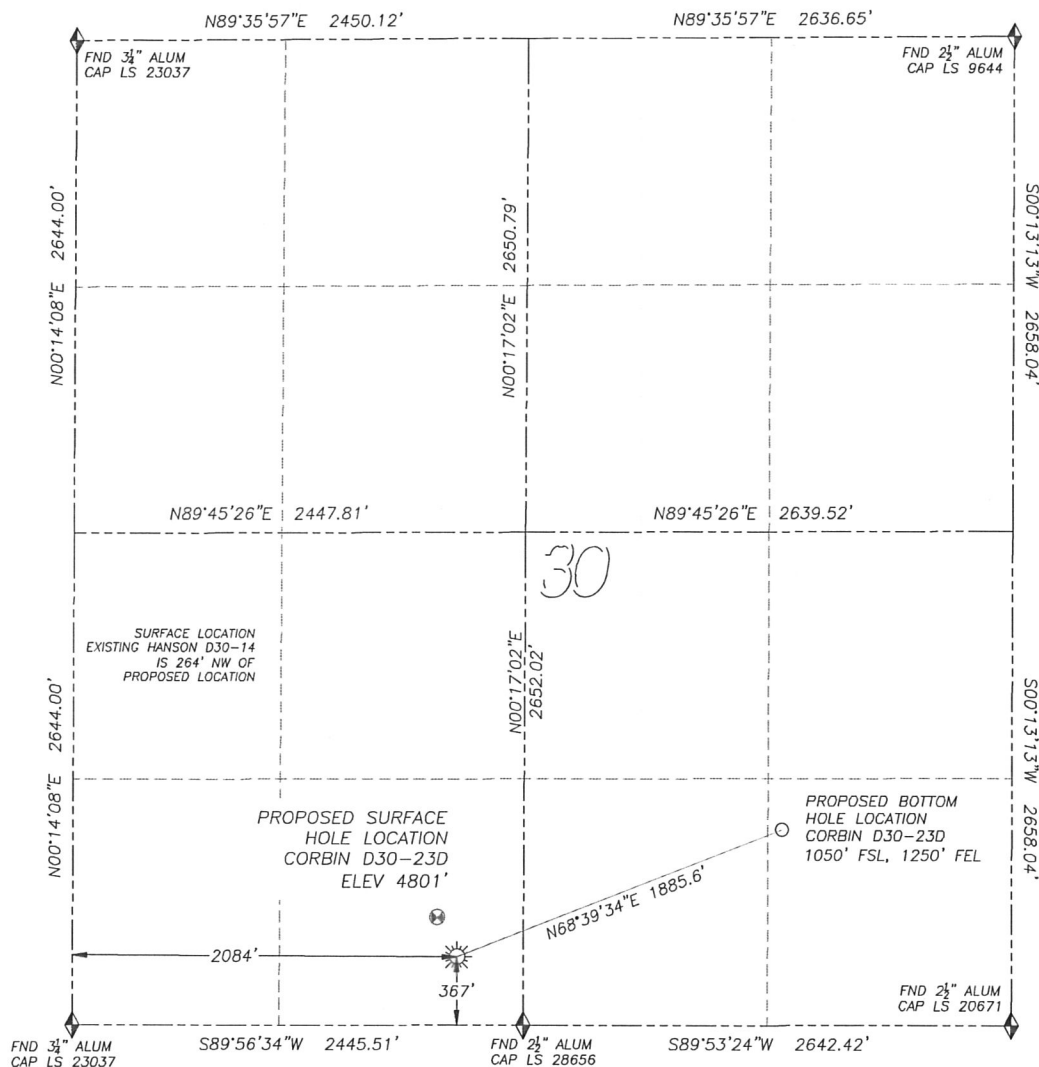


WELL LOCATION CERTIFICATE

CORBIN D30-23D

SECTION 30, TOWNSHIP 3 NORTH, RANGE 64 WEST OF THE 6TH PRINCIPAL MERIDIAN

**LEGEND**

- ◆ FOUND MONUMENT AS DESCRIBED
- ☀ PROPOSED WELL
- ⊙ EXISTING WELL
- BOTTOM HOLE
- ⊗ ABANDONED WELL

NAD 83 LATITUDE AND LONGITUDE**CORBIN D30-23D SURFACE HOLE:**

LATITUDE: N40.18989°
 LONGITUDE: W104.59535°
 ELEVATION: 4801'
 FOOTAGE: 367' FSL, 2084' FWL
 PDOP: 1.6
 QTR/QTR: SE4/SW4
 PROP LINE: 367'± SOUTH

BOTTOM HOLE:

LATITUDE: N40.19177°
 LONGITUDE: W104.58907°
 FOOTAGE: 1050' FSL, 1250' FEL

NEAREST EXISTING WELL:

HANSON D30-14 SURFACE HOLE
 LATITUDE: N40.19047°
 LONGITUDE: W104.59572°
 ELEVATION: 4800'
 237' NORTHWEST

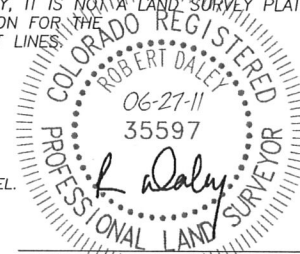
IN ACCORDANCE WITH A REQUEST FROM SEAN CASPER OF NOBLE ENERGY INC., DALEY LAND SURVEYING, INC. HAS DETERMINED THE SURFACE LOCATION OF THE CORBIN D30-23D WELL TO BE 367' FSL, 2084' FWL, AS MEASURED AT NINETY (90) DEGREES FROM THE SECTION LINES OF SECTION 30, TOWNSHIP 3 NORTH, RANGE 64 WEST OF THE 6TH PRINCIPAL MERIDIAN, WELD COUNTY, COLORADO. THE BOTTOM HOLE LOCATION, PROVIDED BY THE CLIENT, IS TO BE 1050' FSL, 1250' FEL.

I HEREBY CERTIFY THAT THIS WELL LOCATION CERTIFICATE WAS PREPARED BY ME OR UNDER MY DIRECT SUPERVISION, THAT THE WORK WAS COMPLETED ON 6/23/2011 FOR AND ON BEHALF OF NOBLE ENERGY, INC., AND THAT THIS MAP DOES NOT REPRESENT A BOUNDARY SURVEY, IT IS NOT A LAND SURVEY PLAT OR AN IMPROVEMENT SURVEY PLAT AND IT IS NOT TO BE RELIED UPON FOR THE ESTABLISHMENT OF FENCE, BUILDING OR OTHER FUTURE IMPROVEMENT LINES.

NOTES:

- 1) BEARINGS FOR THIS MAP ARE ASSUMED AND BASED UPON GPS OBSERVATIONS MADE BETWEEN MONUMENTS LOCATED AT THE SOUTHWEST CORNER AND SOUTH QUARTER CORNER OF SECTION 30, T.3N., R.64W.
- 2) HORIZONTAL DATUM IS NAD83.
- 3) VERTICAL DATUM IS NAVD88. ELEVATIONS ARE DERIVED FROM GPS OBSERVATIONS PROCESSED THROUGH OPUS, UTILIZING THE GEOID03 MODEL.
- 4) SEE LOCATION DRAWING FOR VISIBLE IMPROVEMENTS WITHIN 600' OF PROPOSED SURFACE HOLE LOCATION.
- 5) SURFACE USE: AGRICULTURAL.

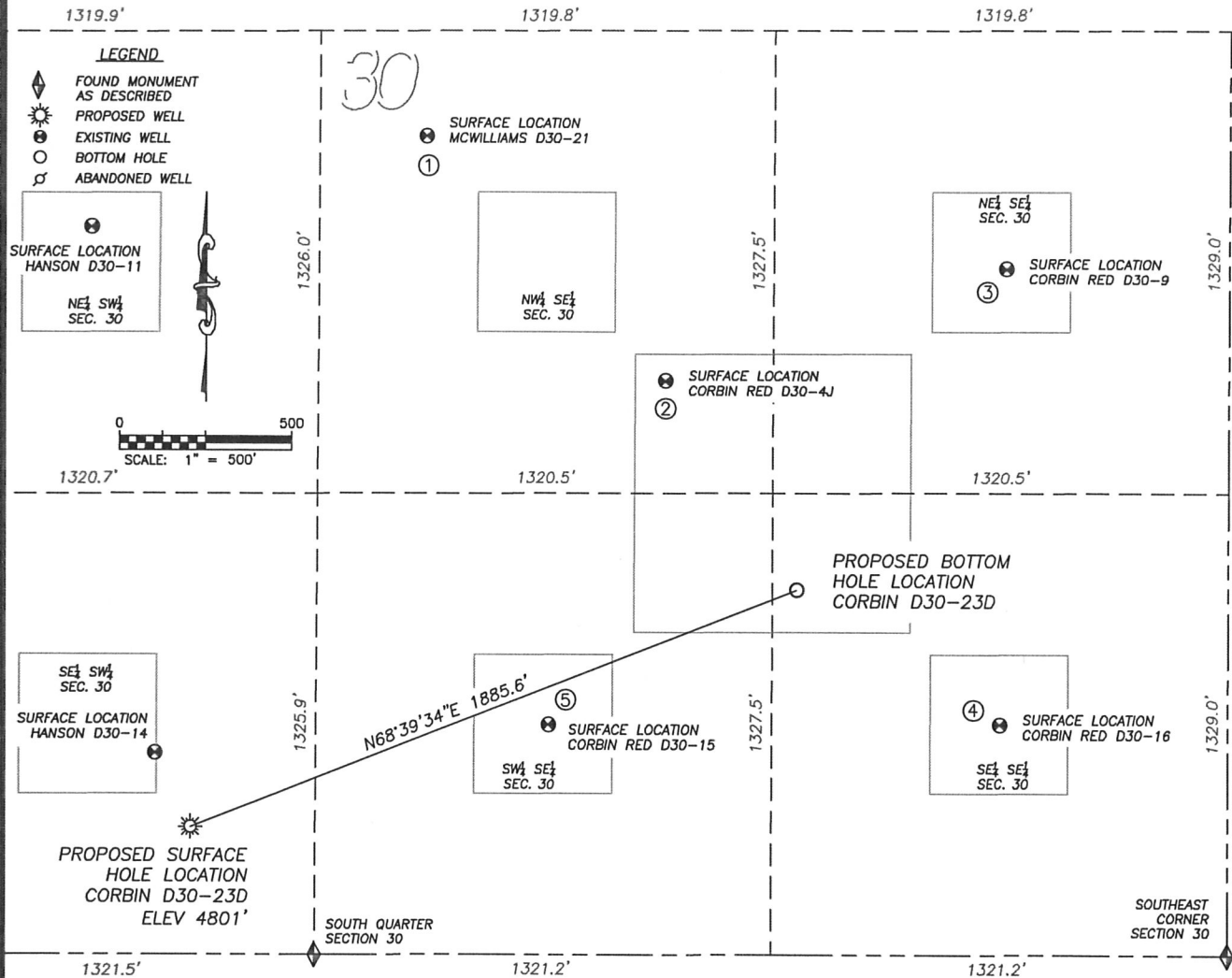
NOTICE: According to Colorado law you MUST commence any legal action based upon any defect in this W.L.C. within three years after you first discover such defect. In no event may any action based upon any such defect in this W.L.C. be commenced more than ten years from the date of the certification shown herein.



FOR AND ON BEHALF OF
 DALEY LAND SURVEYING, INC.,
 Robert Daley, PLS 35597

SITE SKETCH CORBIN D30-23D

SECTION 30, TOWNSHIP 3 NORTH, RANGE 64 WEST OF THE 6TH PRINCIPAL MERIDIAN



- ① MCWILLIAMS D30-21
NW/SE SEC. 30
2351' FSL, 2330' FEL
1686' NW OF PROPOSED
BOTTOM HOLE LOCATION
LAT. N40.19534"
LONG. W104.59291"
EL: 4793'
PDOP 2.9

② CORBIN RED D30-4J
NW/SE SEC. 30
1649' FSL, 1633' FEL
709' NW OF PROPOSED
BOTTOM HOLE LOCATION
LAT. N40.19342"
LONG. W104.59043"
EL: 4795'
PDOP 2.7

③ CORBIN RED D30-9
NE/SE SEC. 30
1972' FSL, 645' FEL
1106' NE OF PROPOSED
BOTTOM HOLE LOCATION
LAT. N40.19431"
LONG. W104.58689"
EL: 4794'
PDOP 1.9

④ CORBIN RED D30-16
SE/SE SEC. 30
662' FSL, 659' FEL
705' SE OF PROPOSED
BOTTOM HOLE LOCATION
LAT. N40.19071"
LONG. W104.58696"
EL: 4799'
PDOP 2.8

⑤ CORBIN RED D30-15
SW/SE SEC. 30
661' FSL, 1968' FEL
819' SW OF PROPOSED
BOTTOM HOLE LOCATION
LAT. N40.19070"
LONG. W104.59164"
EL: 4798'
PDOP 2.6

NOTES:
1) THIS DOES NOT REPRESENT
A BOUNDARY SURVEY
2) THE LATITUDES AND
LONGITUDES SHOWN ARE
REFERENCED TO NAD83
3) DATUM FOR ELEVATION IS
NAVD88. ELEVATIONS ARE
DERIVED FROM GPS-RTK
OBSERVATIONS PROCESSED
THROUGH OPUS, UTILIZING
THE GEIOD3 MODEL.

