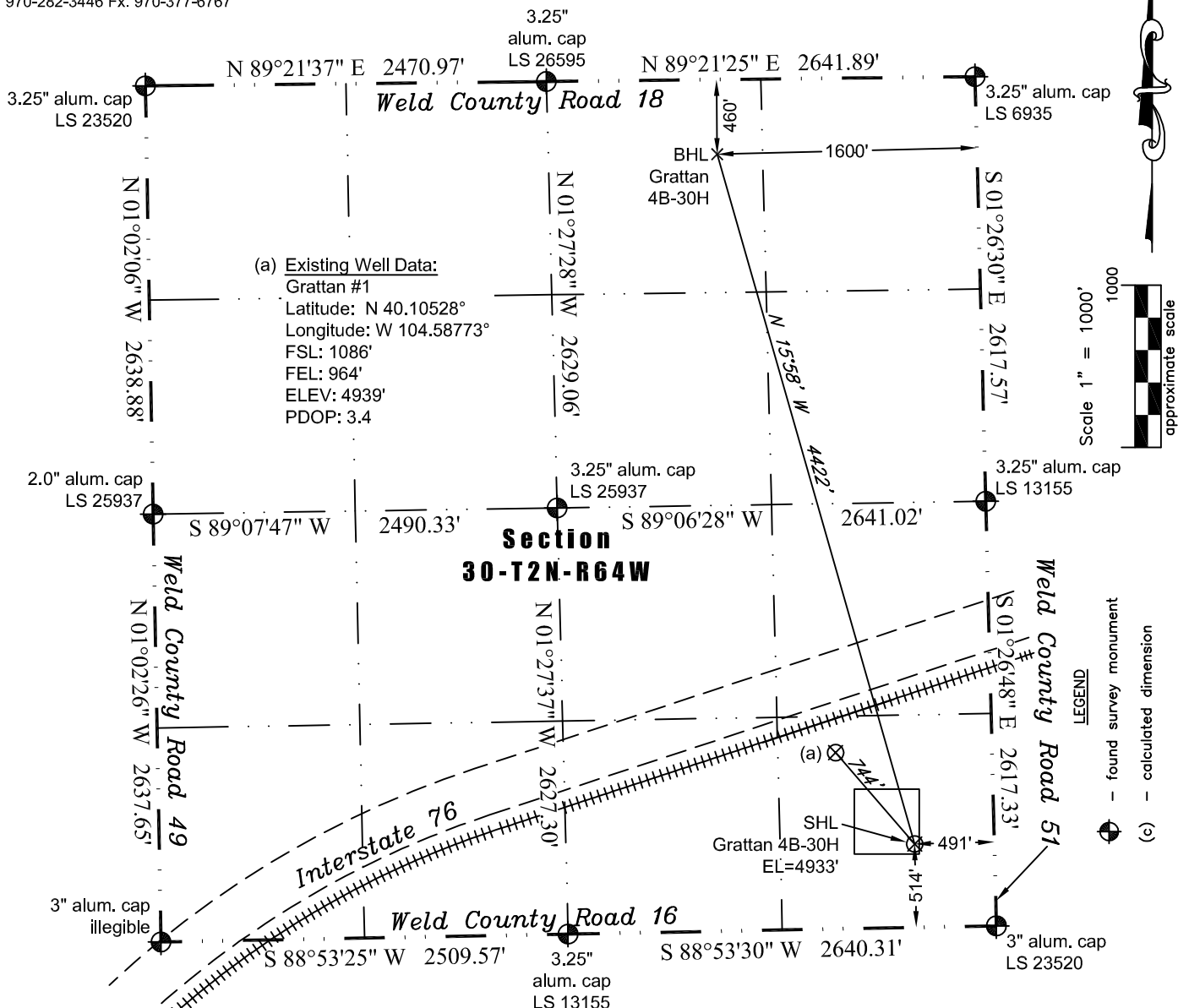


PLS Group, LLC
109 Coronado Ct. - Bldg. 7
Fort Collins, Colorado 80525
P. 970-282-3446 Fx. 970-377-6767

WELL LOCATION CERTIFICATE

THIS MAP DOES NOT REPRESENT A BOUNDARY SURVEY



In accordance with a request from Jay Knutson of EnCana Oil & Gas (USA) Inc., PLS Group, LLC has determined the location of the Grattan 4B-30H well site to be SHL 514' FSL and 491' FEL (BHL 460' FNL and 1600' FEL) as measured at ninety (90) degrees from the section lines of Section 30, Township 2 North, Range 64 West of the 6th Principal Meridian, Weld County, Colorado.

Proposed Surface Hole Data:

Latitude: N 40.10373° (BHL 40.11543°)
Longitude: W 104.58601° (BHL 104.59020°)
PDOP: 1.1

Nearest:

Building 296' southeast	Above Ground Utility 457' east
Public Road 479' east	Railroad 886' northwest
Property Line 491' east	Well Window: SHL is 27' inside
Existing Well: Grattan #1 744' northwest	

Notes:

- 1) Bearings and distances based on NAD 83 Colorado North State Plane Coordinates using RTK GPS observations taken 7/1/11 by operator Tom Winans.
- 2) Conversion factor to ground (1.000273635).
- 3) Elevations based on NAVD 88 GPS heights and Geoid 2003 corrections.
- 4) See Location Drawing for visible improvements within 400 feet.
- 5) The surface use is uncultivated agricultural field.

NOTICE: According to Colorado law you must commence any legal action based upon any defect in this W.L.C. within three years after you first discover such defect. In no event may any action based upon any defect in this W.L.C. be commenced more than ten years from this said date of the certification shown hereon.

I hereby certify that this Well Location Certificate was prepared by me or under my direct supervision on 7/6/2011 for and on behalf of EnCana Oil & Gas (USA) Inc. That it is not a Land Survey Plat or an Improvement Survey Plat and that it is not to be relied upon for establishment of fences, buildings, or other future improvement lines.

John Robert McGehee LS#38219
Well: Grattan 4B-30H WLC