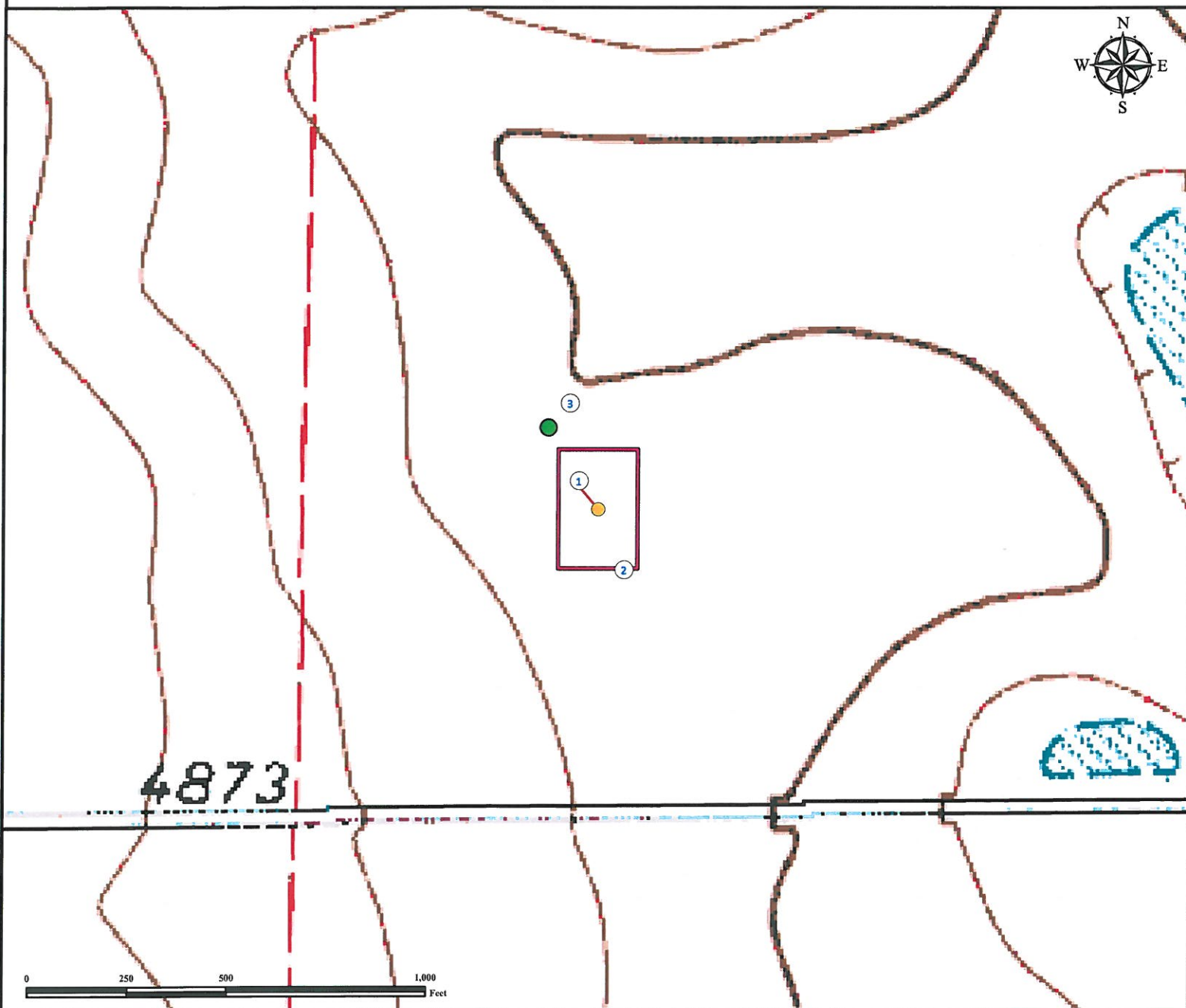


# Reference Area Map

## IRVINE 15-22

SW¼ SE¼ SECTION 22, TOWNSHIP 7 NORTH, RANGE 64 WEST OF THE 6TH PRINCIPAL MERIDIAN



1. Proposed Well IRVINE 15-22.
2. Operational Disturbance Area.
3. Reference Photo Point.

### Legend

- Proposed Well
- Reference Photo Point
- Disturbance Area

### Reference Location

\*\* IRVINE 15-22  
Reference Photo Point (NAD83) \*\*

Lat: 40.554064° Long: -104.533492° (NAD83)  
Elevation: 4857 Feet



Use our resources to find yours!  
[www.petro-fs.com](http://www.petro-fs.com)  
(303) 928-7128

Field Date: 07/26/2011  
Drafting Date: 07/27/2011  
Drafter: DMM  
Checked By: BHF

Data Sources:  
- Topo courtesy of USGS.

Prepared for:



BAYSWATER  
EXPLORATION AND PRODUCTION, LLC

## REFERENCE PHOTOS



**Looking North**



**Looking East**



**Looking South**



**Looking West**

**Well Name: IRVINE 15-22**

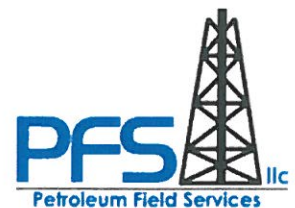
**Operator: Bayswater E&P, LLC**

**Surface Location: T7N R64W S22 SWSE**

**Date Taken: 07/26/2011**

1801 W. 13th Ave  
Denver, CO 80204  
(303) 928-7128

111 E. Third Street  
Suite 207  
Rifle, CO 81650  
(970) 625-4740



*Use our resources to find yours!*  
[www.Petro-fs.com](http://www.Petro-fs.com)