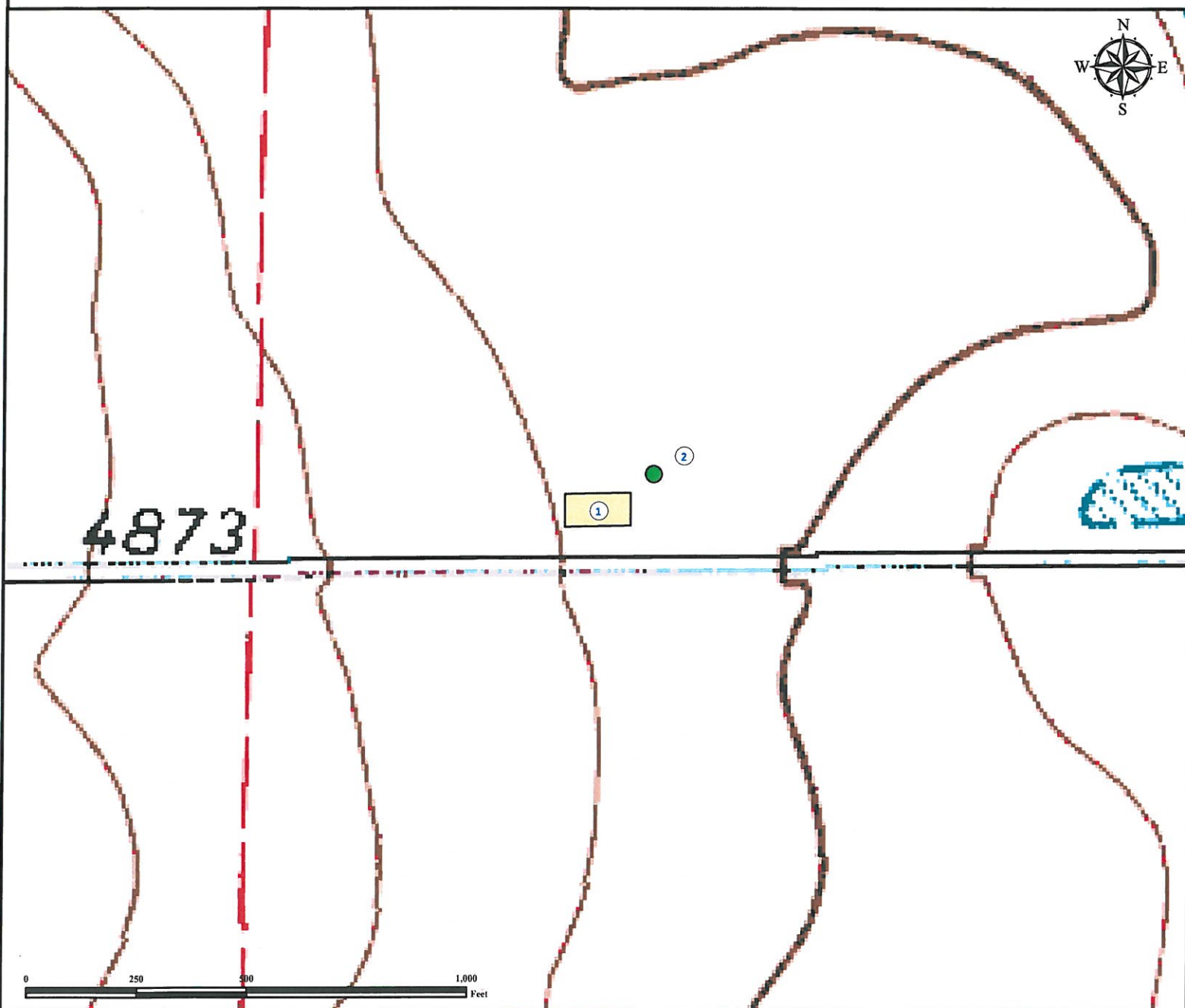


Reference Area Map

IRVINE 15-22 FACILITY

SW¼ SE¼ SECTION 22, TOWNSHIP 7 NORTH, RANGE 64 WEST OF THE 6TH PRINCIPAL MERIDIAN



1. Proposed Well IRVINE 15-22 FACILITY.

2. Reference Photo Point.

Legend



Reference Photo Point



Proposed Facility

Reference Location

** IRVINE 15-22 FACILITY
Reference Photo Point (NAD83) **

Lat: 40.551958° Long: -104.532532° (NAD83)
Elevation: 4859 Feet



Use our resources to find yours!
www.petro-fs.com
(303) 928-7128

Field Date: 07/26/2011
Drafting Date: 07/27/2011
Drafter: DMM
Checked By: BHF

Data Sources:
- Topo courtesy of USGS.

Prepared for:



BAYSWATER
EXPLORATION AND PRODUCTION, LLC

REFERENCE PHOTOS



Looking North



Looking East



Looking South



Looking West

Well Name: IRVINE 15-22 FACILITY

Operator: Bayswater E&P, LLC

Surface Location: T7N R64W S22 SWSE

Date Taken: 07/26/2011

1801 W. 13th Ave
Denver, CO 80204
(303) 928-7128

111 E. Third Street
Suite 207
Rifle, CO 81650
(970) 625-4740



Use our resources to find yours!
www.Petro-fs.com