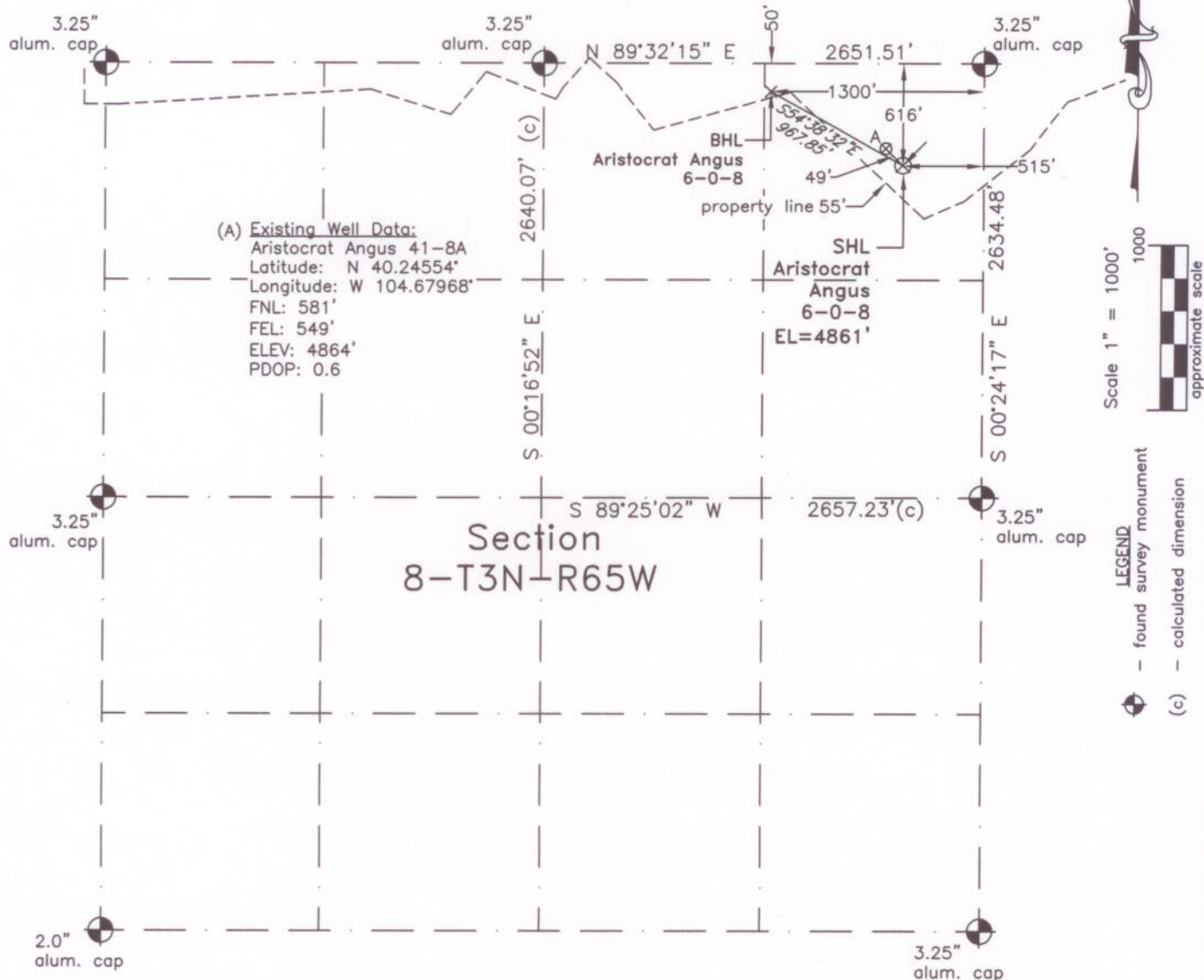


WELL LOCATION CERTIFICATE*THIS MAP DOES NOT REPRESENT A BOUNDARY SURVEY*

In accordance with a request from Dave Bale of EnCana Oil & Gas (USA) Inc., Frederick Land Surveying, Inc. has determined the location of the **Aristocrat Angus 6-0-8** well site to be SHL: 616' FNL and 515' FEL, (BHL 50' FNL and 1300' FEL) as measured at ninety (90) degrees from the section lines of Section 8, Township 3 North, Range 65 West, 6th Principal Meridian, County of Weld, CO.

Proposed Surface Hole Data:

Latitude: N 40.24544° (BHL 40.24700°)

Longitude: W 104.67955° (BHL 104.68236°)

Nearest: Building 870' southwest

Above Ground Utility 1650' southwest

Public Road 458' southeast

Railroad 28,500' northwest

Property Line 55' southwest

PDOP: 1.1

I hereby certify that this Well Location Certificate was prepared by me or under my direct supervision on 10/12/10 for and on behalf of EnCana Oil & Gas (USA) Inc. That it is not a Land Survey Plat or an Improvement Survey Plat and that it is not to be relied upon for establishment of fences, buildings, or other future improvement lines.

38219
10-12-2010
PROFESSIONAL LAND SURVEYOR

John Robert McGehee PLS#38219
Job #: 09012.017

Notes:

- 1) Bearings and distances based on NAD 83 Colorado North State Plane Coordinates using RTK GPS observations taken 9/30/10 by operator Tom Winans.
- 2) Conversion factor to ground (1.000274972).
- 3) Elevations based on NAVD 88 GPS heights and Geoid 2003 corrections.
- 4) See improvement map for visible improvements within 400' of pad site.
- 5) The location falls on natural ground.

NOTICE: According to Colorado law you MUST commence any legal action based upon any defect in this W.L.C. within three years after you first discover such defect. In no event may any action based upon any defect in this W.L.C. be commenced more than ten years from this said date of the certification shown hereon.