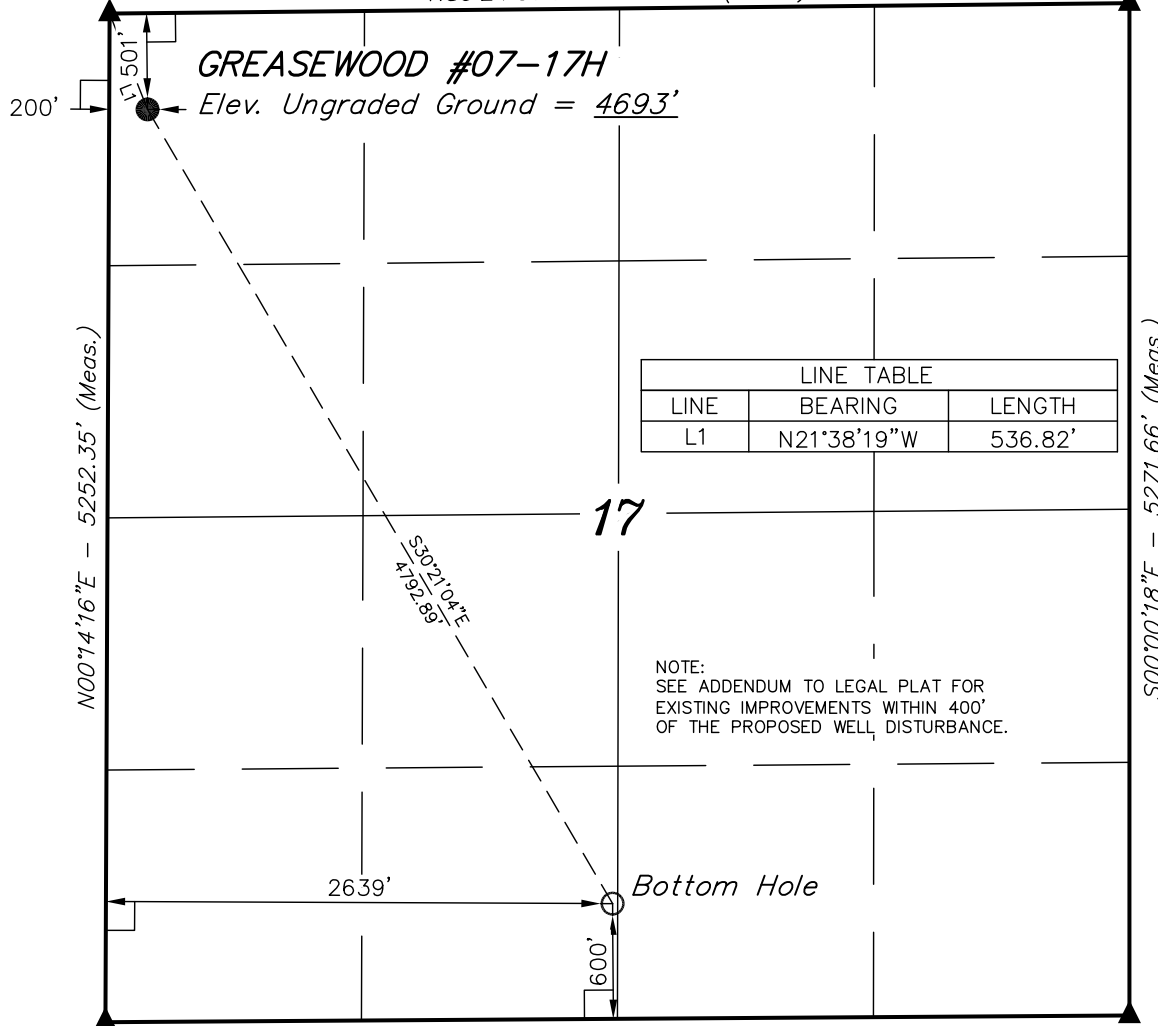


T6N, R61W, 6th P.M.

2006 Private Alum. Cap,
Flush With Ground
PLS #20701
Lat: 40.495194°
Long: 104.242767°

2007 Private Alum. Cap,
0.2' Above Ground
PLS #38019
Lat: 40.495339°
Long: 104.223672°

N89°24'51"E - 5311.98' (Meas.)



2007 Private Alum. Cap,
0.6' Below Ground
PLS #28285
Lat: 40.480781°
Long: 104.242850°

S89°37'28"W - 5334.08' (Meas.)

2011 Private Alum. Cap,
0.2' Below Ground
Lat: 40.480872°
Long: 104.223678°

PDOP = 2.1

LEGEND:

- └─┘ = 90° SYMBOL
- = PROPOSED WELL HEAD.
- ▲ = SECTION CORNERS LOCATED.

NAD 83 (TARGET BOTTOM HOLE)	NAD 83 (SURFACE LOCATION)
LATITUDE = 40°28'56.91" (40.482475)	LATITUDE = 40°29'37.77" (40.493825)
LONGITUDE = 104°14'00.08" (104.233356)	LONGITUDE = 104°14'31.40" (104.242056)
NAD 27 (TARGET BOTTOM HOLE)	NAD 27 (SURFACE LOCATION)
LATITUDE = 40°28'56.97" (40.482492)	LATITUDE = 40°29'37.83" (40.493842)
LONGITUDE = 104°13'58.26" (104.232850)	LONGITUDE = 104°14'29.58" (104.241550)
STATE PLANE NAD 83	STATE PLANE NAD 83
N: 1421122.48 E: 3352332.44	N: 1425222.47 E: 3349853.94
STATE PLANE NAD 27	STATE PLANE NAD 27
N: 421123.13 E: 2352482.31	N: 425223.03 E: 2350003.69

EOG RESOURCES, INC.

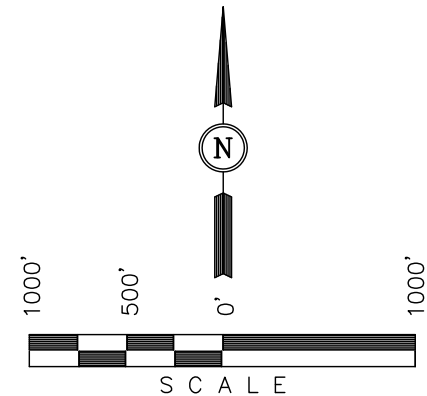
Well location, GREASEWOOD #07-17H, located as shown in the NW 1/4 NW 1/4 of Section 17, T6N, R61W, 6th P.M., Weld County, Colorado.

BASIS OF ELEVATION

SPOT ELEVATION LOCATED AT THE NORTHEAST CORNER OF SECTION 24, T5N, R62W, 6th. P.M. TAKEN FROM THE POINT OF ROCKS, QUADRANGLE, COLORADO, WELD COUNTY, 7.5 MINUTE QUAD (TOPOGRAPHIC MAP) PUBLISHED BY THE UNITED STATES DEPARTMENT OF THE INTERIOR, GEOLOGICAL SURVEY. SAID ELEVATION IS MARKED AS BEING 4530 FEET.

BASIS OF BEARINGS

BASIS OF BEARINGS IS A G.P.S. OBSERVATION.



CERTIFICATE

THIS IS TO CERTIFY THAT THE ABOVE PLAT WAS PREPARED FROM FIELD NOTES OF ACTUAL SURVEYS MADE BY ME OR UNDER MY SUPERVISION AND THAT THE SAME ARE TRUE AND CORRECT TO THE BEST OF MY KNOWLEDGE AND BELIEF.

REGISTERED LAND SURVEYOR
REGISTRATION NO. 17492
STATE OF COLORADO
07-09-11

UINTAH ENGINEERING & LAND SURVEYING
85 SOUTH 200 EAST - VERNAL, UTAH 84078
(435) 789-1017

SCALE 1" = 1000'	DATE SURVEYED: 06-01-11	DATE DRAWN: 06-20-11
PARTY D.N. C.Z. S.R.L.	REFERENCES G.L.O. PLAT	
WEATHER WARM	FILE EOG RESOURCES, INC.	